

## OPERATION

When the batteries are loaded, a red LED light on the front of the unit will flash once and a single beep will sound. This indicates the unit is set up and ready to work.

**ENTRY DELAY:** After the unit is set up, there will be an 8-12 second alarm delay with the red LED light flashing. After this, the alarm is ready.

The Safe Pool is designed to sound a loud alert when children enter through a Safe Pool protected door / gate. When properly installed, the Safe Pool will allow adults to pass through the protected door / gate and immediately shut off the sounding alarm.

When powered, the Safe Pool is always in protected mode. The alarm will activate the instant when the door / gate opens by more than 1 inch (when the magnetic sensors are apart by more than 1 inch). Once the alarm activates, it will sound continuously until the BYPASS button is pressed.

When passing through the door/gate from the opposite side, where the additional BYPASS option is included (S189A does not include the additional BYPASS button) and mounted, press that outside mounted BYPASS button to temporarily disarm, open door, enter and close the door quickly. The unit will re-arm itself within 8-12 seconds.

## MAINTENANCE

When the alarm volume becomes low, or the unit does not produce normal alarm sound, the red light will illuminate. Replace with (3) 1.5V AAA batteries.

The Safe Pool's plastic resists ultraviolet rays from direct sunlight exposure. However, slight discoloration over time is normal.

## WARNING!

**THE SAFE POOL ALARM IS EXTREMELY LOUD WHEN ACTIVATED. FOR YOUR SAFETY, NEVER PLACE THE UNIT CLOSE TO YOUR EARS. TO TEST THE ALARM, ALWAYS USE EAR PROTECTION AND DIRECT THE UNIT AWAY BEFORE TESTING / ACTIVATING THE ALARM.**

**IT IS PROHIBITED BY LAW TO REMOVE THE INSTALLED ALARM AFTER IT HAS PASSED INSPECTION !**

**Important Warranty Information:  
A dated proof of purchase is required for warranty service**

**Customer Service :**  
1-888-8TECHKO (1-888-883-2456)  
Website: [www.techkousa.com](http://www.techkousa.com)

Mfg. By **TECHKO**<sup>®</sup>  
9767 Research Drive  
Irvine, CA 92618-4626  
MADE IN CHINA

**USA Patent: No. 5,473,310  
No. 6,727,819  
No. 7,187,280**

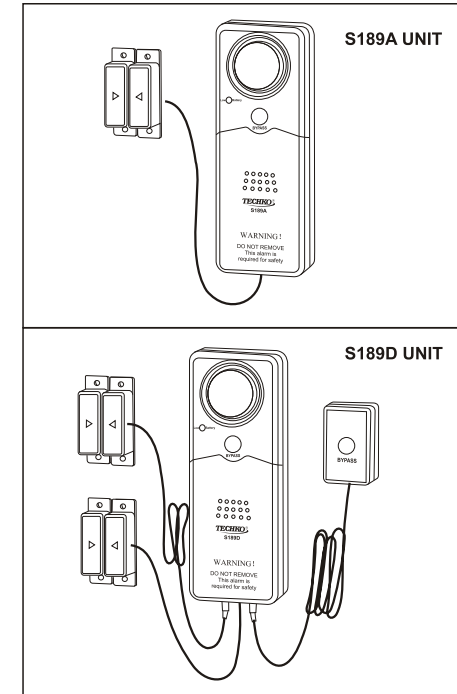
### NOTICE

**THIS PRODUCT IS PROTECTED UNDER FEDERAL PATENT, TRADEMARK AND COPYRIGHT LAWS AND LAWS PREVENTING UNFAIR COMPETITION. NO DUPLICATION OR SIMULATION OF THIS PRODUCT IS PERMITTED EXCEPT BY WRITTEN AUTHORIZATION OF TECHKO, INC.**

**TECHKO AND THE CONFIGURATION OF THIS PRODUCT ARE TRADEMARKS OF TECHKO INC.  
COPYRIGHT 1994 TECHKO, INC.  
ALL RIGHTS RESERVED  
MADE IN CHINA**

# TECHKO<sup>®</sup>

## Safe Pool™ Model S189A / S189D Area Entry Alarm



## OPERATION MANUAL

## INTRODUCTION

Congratulations on your purchase of the TECHKO Safe Pool model S189A / S189D safety alarm. The Safe Pool can be used to provide a high volume alarm alert when children have entered a pool or spa area. The S189A / S189D can be used outdoors on wood doors / windows / gates.

## FEATURES

- \* Easy installation for gate or door protection
- \* Weather / Water resistant
- \* (3) 1.5V AAA batteries (included)
- \* High output 100-110 dB 6-tone alarm siren
- \* One button BYPASS operation
- \* Low battery LED display
- \* Optional additional BYPASS button for delayed entry from either side of door or fence (S189A not included)
- \* Optional additional magnetic sensor for screen door exit / entry (S189A not included)

## IMPORTANT SAFETY TIPS

- \* Alarm siren is VERY loud; NEVER place the unit close to ears.
- \* Install the unit high enough to be out of reach of children
- \* S189D - additional delay button may be mounted on the other side of the entrance. When pressed, it will delay the alarm 8 -12 seconds before alarm is triggered, allowing time to secure the door / gate.
- \* S189D - additional magnetic sensor allows the unit to be used on sliding door with screens. Alarm will sound only when both magnetic sensors are apart.
- \* Keep this manual for future reference.

The Safe Pool can provide valuable protection when used correctly. However, it cannot guarantee complete protection against accidents or injuries. Therefore, TECHKO cannot be held responsible for any loss, damage, or injury that may occur.

## INSTALLATION

**WARNING: Read all installation and operation instructions thoroughly before proceeding with installation.** Before installing the battery, use a rubber band to temporarily secure the two magnetic sensors together with the arrows pointing toward each other to avoid setting off the alarm unintentionally during the installation of the alarm.

### INSTALLING THE BATTERY:

1. Remove the battery cover of the unit and install the new (3) 1.5V AAA batteries (included) (See Fig. 1)
2. If you are sensitive to loud sound, please wear ear protection against the loud alarm siren before testing the alarm.
3. Once the battery is connected the unit is now ON and

working. To test the alarm siren, make sure you have ear protection before testing. After ear protection is in place, separate the magnetic sensors apart by more than 1 inch. The alarm should sound immediately after the sensors are separated. Press the BYPASS button and immediately secure the two magnet sensors together again to avoid the alarm sounding off unintentionally.

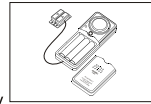


Fig. 1

### MOUNTING:

**WARNING: The alarm should be positioned close to the door high enough to be out of the reach of children.** As each mounting application varies, TECHKO suggests testing the unit's installation location and effectiveness before permanently mounting the S189A / S189D.

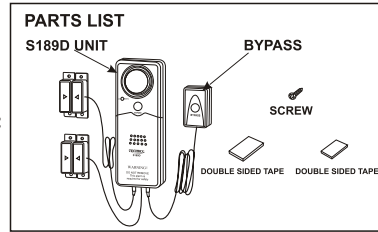


Fig. 2

### MOUNTING INDOORS USING DOUBLE-SIDED TAPE

Make sure that the mounting surfaces for the double-sided tapes are completely clean. Attach the double-sided tapes onto the rear of the unit, and then secure the unit onto the desired mounting surface.

### MOUNTING INDOORS USING SCREW

Using the provided mounting template printed in this manual, mark the position of the screw hole on the desired mounting surface. Drill the screw in to the mounting surface with approximately 0.125 inch of thread remaining. Slide the unit over the screw and secure the unit by pushing it downward as shown in Fig. 3. You may need to adjust the screw towards or away from the mounting surface to provide a more secure fit.

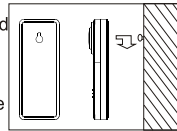


Fig. 3

### MOUNTING THE SENSORS INDOORS

Make sure that the arrows of each sensor are pointed towards each other. Using either the double-sided tape or the screw provided, mount the sensors so that they are less than 1 inch away from each other. Please make sure that the wired portion of the magnetic sensor is mounted on the non-moving portion of the mounting surface and the standalone sensor is mounted on the door / gate (See Fig. 4)

### MOUNTING OUTDOORS ON WOODEN GATES

Using the provided mounting template printed in this manual, mark the position of the screw hole on the desired mounting surface. Drill the screw in to the mounting surface with approximately 0.125 inch of thread remaining. Slide the unit over the screw and secure the unit by pushing it downward as shown in Fig. 3. You may need to adjust the screw towards or away from the mounting surface to provide a more secure fit. Make sure that the arrows of each sensor are facing each other.

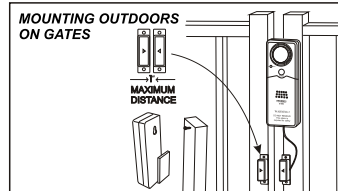
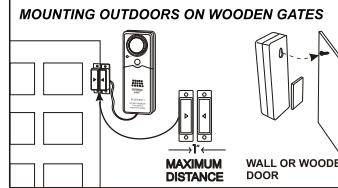


Fig. 4



### MOUNTING INDOORS ON GATES

Using the provided mounting template printed in this manual, mark the position of the screw hole on the desired mounting surface.

S189D- Additional delay button may be mounted on the other side of the entrance. When pressed, it will delay the alarm 8-12 seconds before alarm is triggered, allowing time to secure the door / gate.

S189D- Additional magnetic sensor allows the unit to be used on sliding door with screens. Alarm will sound only when both magnetic sensors are apart.

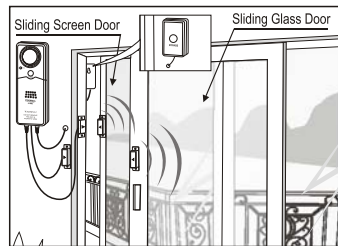


Fig. 5

## TEMPLATE MODEL S189A / S189D



## Free Manuals Download Website

<http://myh66.com>

<http://usermanuals.us>

<http://www.somanuals.com>

<http://www.4manuals.cc>

<http://www.manual-lib.com>

<http://www.404manual.com>

<http://www.luxmanual.com>

<http://aubethermostatmanual.com>

Golf course search by state

<http://golfingnear.com>

Email search by domain

<http://emailbydomain.com>

Auto manuals search

<http://auto.somanuals.com>

TV manuals search

<http://tv.somanuals.com>