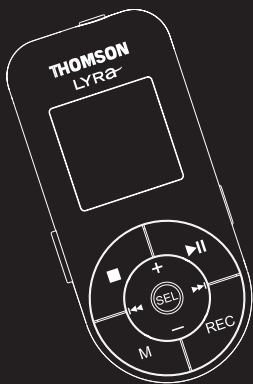


THOMSON

u s e r
m a n u a l



EM2600
EM2601

It is important to read this instruction book prior to using your new product for the first time.

Download from [Www.Somanuals.com](http://www.Somanuals.com). All Manuals Search And Download.

Safety Information

EN

IMPORTANT NOTE: To reduce the risk of fire or shock hazard, do not expose this player to rain or moisture.

CAUTION

RISK OF ELECTRIC SHOCK
DO NOT OPEN



This symbol indicates "dangerous voltage" inside the product that presents a risk of electric shock or personal injury.

ATTENTION

RISQUE DE CHOC ELECTRIQUE
NE PAS OUVRIR



This symbol indicates important instructions accompanying the product.

TO REDUCE THE RISK OF ELECTRIC SHOCK, DO NOT REMOVE THE COVER (OR BACK). NO USER-SERVICEABLE PARTS ARE INSIDE. REFER SERVICING TO THE QUALIFIED SERVICE PERSONNEL.

Sound Pressure Control



Sound Pressure Control

Articles L44.5 and 44.6 of the Code on Public Health modified by Article 2 of the Law dated May 28th 1996 impose a maximum acoustic output of 100 decibels. The headphone provided and your player do abide by the legislation in force. Prolonged listening in full power may irreversibly damage the user's hearing.

The descriptions and characteristics given in this document are given as a general indication and not as a guarantee. In order to provide the highest quality product possible, we reserve the right to make any improvement or modification without prior notice. The English version serves as the final reference on all products and operational details should any discrepancies arise in other languages.

End User License Agreement

IMPORTANT-READ CAREFULLY: This End User License Agreement ("Agreement") is a legal agreement between you and Thomson Inc. ("Thomson") for the Thomson Lyra device application/driver software program and associated documentation, if any ("Program").

ACKNOWLEDGMENT

BY INSTALLING THE SOFTWARE OR CLICKING ON THE ACCEPTANCE BUTTON OF THE SOFTWARE, COPYING OR OTHERWISE USING THE PROGRAM, YOU ACKNOWLEDGE AND AGREE THAT YOU HAVE READ THIS AGREEMENT, UNDERSTAND IT, AND AGREE TO BE BOUND BY ITS TERMS AND CONDITIONS. IF YOU DO NOT AGREE TO THE TERMS OF THIS LICENSE AGREEMENT, CLICK ON THE REJECTION BUTTON AND/OR DO NOT INSTALL THE SOFTWARE AND/OR DO NOT USE THE PROGRAM.

LICENSE

- a) You are granted the license (i) to use the Program on a single workstation and (ii) to make one (1) copy of the Program into any machine-readable form for backup of the Program, provided the copy contains all of the original Program's proprietary notices.
- b) You may transfer the Program and license, only as part of the Thomson Lyra device, to another party if the other party agrees to accept the terms and conditions of this Agreement. If you transfer the Program, you must at the same time either transfer all copies to the same party or destroy any copies not transferred.

LICENSE RESTRICTIONS

- a) Except for the licenses expressly granted to you in this Agreement, no other licenses are implied.
- b) You may not (i) modify, translate, reverse engineer, decompile, disassemble (except to the extent that this restriction is expressly prohibited by law) or create derivative works based upon

the Program or (ii) copy the Program, except as expressly permitted herein. You agree that you shall only use the Program in a manner that complies with all applicable laws in the jurisdictions in which you use the Program, including, but not limited to, applicable restrictions concerning copyright and other intellectual property rights.

- c) The Program may contain pre-release code that does not perform at the level of a final code release. In this case, the Program may not operate properly. Updated versions of the Program can be downloaded from www.thomson-lyra.com.
- d) Thomson is not obligated to provide support services for the Program.
- e) The Program is provided with "RESTRICTED RIGHTS". Use, duplication, or disclosure by the U.S. Government is subject to restrictions as set forth in subparagraph (c)(1)(ii) of DFARS 252.227-7013, or FAR 52.227-19, or in FAR 52.227-14 Alt. III, as applicable.

TERM AND TERMINATION

- a) The license is effective on the date you accept this Agreement, and remains in effect until terminated by either party.
- b) You may terminate this license without any notice or delay, by destroying or permanently erasing the Program and all copies thereof.
- c) If you use, copy, modify, or transfer the Program, or any copy, in whole or part, except as expressly provided for in this license, your license is automatically terminated.
- d) When the license is terminated, you must destroy or permanently erase the Program and all copies thereof.

End User License Agreement

EN

WARRANTY DISCLAIMER

THE PROGRAM IS PROVIDED "AS IS" WITHOUT WARRANTY OF ANY KIND, EITHER EXPRESSED OR IMPLIED, INCLUDING, BUT NOT LIMITED TO THE IMPLIED WARRANTIES OF MERCHANTABILITY, FITNESS FOR A PARTICULAR PURPOSE, TITLE OR NON-INFRINGEMENT. THE ENTIRE RISK AS TO THE QUALITY AND PERFORMANCE OF THE PROGRAM IS WITH YOU. SHOULD THE PROGRAM PROVE DEFECTIVE, YOU (AND NOT THOMSON, ITS SUPPLIERS, ITS AFFILIATES OR ITS DEALERS) ASSUME THE ENTIRE COST FOR ALL NECESSARY REPAIR OR CORRECTION.

This exclusion of warranty may not be allowed under some applicable laws. As a result, the above exclusion may not apply to you, and you may have other rights depending on the law that applies to you.

OWNERSHIP RIGHTS

All title and intellectual property rights in and to the Program and any copies thereof are owned by Thomson or its suppliers. All title and intellectual property rights in and to the content which may be accessed through use of the Program is the property of the respective content owner and may be protected by applicable copyright or other intellectual property laws and treaties. This license grants you no rights to use such content.

LIMITATION OF LIABILITY

a) TO THE MAXIMUM EXTENT PERMITTED BY APPLICABLE LAW, IN NO EVENT SHALL THOMSON, ITS AFFILIATES, OR ITS DEALERS BE LIABLE FOR ANY SPECIAL, INCIDENTAL, INDIRECT OR CONSEQUENTIAL DAMAGES WHATSOEVER (INCLUDING, WITHOUT LIMITATION, DAMAGES FOR LOSS OF PROFITS, BUSINESS INTERRUPTION, CORRUPTION OF FILES, LOSS OF BUSINESS INFORMATION OR ANY OTHER PECUNIARY LOSS) REGARDLESS OF CAUSE OR FORM OF

ACTION, INCLUDING CONTRACT, TORT OR NEGLIGENCE, ARISING OUT OF THE USE OF OR INABILITY TO USE THE PROGRAM, EVEN IF THOMSON HAS BEEN ADVISED OF THE POSSIBILITY OF SUCH DAMAGES. BECAUSE SOME STATES AND JURISDICTIONS DO NOT ALLOW THE EXCLUSION OR LIMITATION OF LIABILITY OF CONSEQUENTIAL OR INCIDENTAL DAMAGES, THE ABOVE LIMITATION MAY NOT APPLY TO YOU.

b) YOU ASSUME RESPONSIBILITY FOR THE SELECTION OF THE APPROPRIATE PROGRAM TO ACHIEVE YOUR INTENDED RESULTS, AND FOR THE INSTALLATION, USE, AND RESULTS OBTAINED.

WINDOWS MEDIA

This version of the Lyra Personal Digital Player ("Lyra Player") contains software licensed from Microsoft that enables you to play Windows Media Audio (WMA) files ("WMA Software"). The WMA Software is licensed to you for use with the RCA/THOMSON Portable Audio Device digital music player under the following conditions. By installing and using this version of the Lyra Player, you are agreeing to these conditions. IF YOU DO NOT AGREE TO THE CONDITIONS OF THIS END USER LICENSE AGREEMENT, DO NOT INSTALL OR USE THIS VERSION OF THE Lyra Player.

The WMA Software is protected by copyright and other intellectual property laws. This protection also extends to documentation for the WMA Software, whether in written or electronic form.

End User License Agreement

EN

GRANT OF LICENSE.

The WMA Software is only licensed to you as follows:

You may use this version of the Lyra Player containing the WMA Software only with the Portable Audio Device player.

You may not reverse engineer, decompile, or disassemble the WMA Software, except and only to the extent that such activity is expressly permitted by applicable law in spite of this limitation.

You may transfer your right to use this version of the Lyra Player only as part of a sale or transfer of your Portable Audio Device player, on the condition that the recipient agrees to the conditions in this End User License Agreement. If the version of the Lyra Player that you are transferring is an upgrade, you must also transfer all prior versions of the Lyra Player that you have which include the WMA Software.

MICROSOFT IS NOT PROVIDING ANY WARRANTY OF ANY KIND TO YOU FOR THE WMA SOFTWARE, AND MICROSOFT MAKES NO REPRESENTATION CONCERNING THE OPERABILITY OF THE WMA SOFTWARE.

The WMA Software is of U.S. origin. Any export of this version of the Lyra Player must comply with all applicable international and national laws, including the U.S. Export Administration Regulations, that apply to the WMA Software incorporated in the Lyra Player.

THIRD PARTY SOFTWARE

ANY THIRD PARTY SOFTWARE THAT MAY BE PROVIDED WITH THE PROGRAM IS INCLUDED FOR USE AT YOUR OPTION. IF YOU CHOOSE TO USE SUCH THIRD PARTY SOFTWARE, THEN SUCH USE SHALL BE GOVERNED BY SUCH THIRD PARTY'S LICENSE AGREEMENT, AN ELECTRONIC COPY OF WHICH WILL BE INSTALLED IN THE

APPROPRIATE FOLDER ON YOUR COMPUTER UPON INSTALLATION OF THE SOFTWARE. THOMSON IS NOT RESPONSIBLE FOR ANY THIRD PARTY'S SOFTWARE AND SHALL HAVE NO LIABILITY FOR YOUR USE OF THIRD PARTY SOFTWARE.

GOVERNING LAW

This Agreement is governed by the laws of France, without regard to its conflict of laws.

GENERAL TERMS

This Agreement can only be modified by a written agreement signed by you and Thomson, and changes from the terms and conditions of this Agreement made in any other manner will be of no effect. If any portion of this Agreement shall be held invalid, illegal, or unenforceable, the validity, legality, and enforceability of the remainder of the Agreement shall not in any way be affected or impaired thereby. This Agreement is the complete and exclusive statement of the agreement between you and Thomson, which supersedes all proposals or prior agreements, oral or written, and all other communications between you and Thomson, relating to the subject matter of this Agreement.

Table of Contents

EN

Safety Information End User License Agreement

Table of Contents1

Before You Begin2

Connecting to Computer5

Charging the Battery5

Transferring Files to the Player ...5

General Controls6

File Menu7

How Files are Organized7

File Menu Navigation7

Player Menu8

Player Menu Navigation7

Audio Playback9

Switching On and Off Player9

Playing / Pausing9

Skipping Files9

Scanning Files9

Random Playback9

Repeat Playback10

DSP10

My Selections10

Radio11

Basic Operations11

Manual and Preset Modes11

Manual Tuning11

Saving Preset Stations12

Selecting Preset Stations12

Clearing Presets12

Suppressing Stereo Signal12

Stop Listening to the Radio12

Radio Recording13

Voice Recording14

Line-in Recording15

Picture Playback16

Video Playback17

Setting the Player19

Settings19

System Info19

More Information20

Before You Begin

EN

Dear Thomson Customer,

Thank you for purchasing the Thomson Digital Audio Player. This product will play open mp3 and Windows Media™ audio (WMA) content as well as content purchased from most online music download services.

After purchasing and downloading music to your PC, you are now ready to move content to your player. To transfer the music, you should use Windows Media Player or the application recommended by the online music download service.

(Note: Services and applications must be Windows Media audio-compliant and support Digital Rights Management.)

Unpacking your unit

When you unpack your new player, be sure you have removed all the accessories and documentation. The items below should have been packed in the box with your player.

- Digital Audio Player
- Music Management CD
- Earphones
- USB cable
- Line-in cable
- Neck strap

What's so special about this mp3 player?

This player is meant to play mp3 and Windows Media™ audio files and view picture and video clip files.

To do so, you need the use of a Windows computer with a USB port, USB cable and a music management software.

Computer system requirements

- Pentium III 500MHz or higher recommended
Macintosh iMac G3 or higher
- Windows® 2000 (SP3 or higher), or XP
Mac OS X Version 10.2 or higher
- Internet Explorer 4.0 or higher
- Internet access
- 200MB free hard disk space for the software
- 64MB RAM (128 MB recommended)
- CD-ROM drive capable of digital audio extraction
- USB port (2.0 recommended)
- Sound card

Before You Begin

EN



Warning:

Use of this product is for your personal use only. Unauthorized recording or duplication of copyrighted material may infringe upon the rights of third parties and may be contrary to copyright laws.

Precautions for the Unit

- Do not use the unit immediately after transportation from a cold place to a warm place; condensation problem may result.
- Avoid shock to the unit.
- Do not store the unit near fire, places with high temperature or in direct sunlight.
- Do not operate or store unit in places with frequent static electricity or electrical noise (e.g. speaker, TV set).
- Clean the unit with a soft cloth or a damp chamois leather. Never use solvents.
- The unit must only be opened by qualified personnel.

Caution

- Keep product out of direct sunlight. Exposure to direct sunlight or extreme heat (such as inside a parked car) may cause damage or malfunction.
- Do not expose to rain or moisture.

Caution while Driving

Use of headphones while operating an automobile or moving vehicle is not recommended and is unlawful in some states and areas. Be careful and attentive on the road. Stop operation of the unit if you find it disruptive or distracting while driving.

Headset Safety



Have a Blast- Just Not in Your Eardrums

Make sure you turn down the volume on the unit before you put on

headphones. Increase the volume to the desired level only after headphones are in place.

- Do not play your headset at a high volume. Hearing experts warn against extended high-volume play.
- If you experience a ringing in your ears, reduce volume or discontinue use.
- You should use extreme caution or temporarily discontinue use in potentially hazardous situations. Even if your headset is an open-air type designed to let you hear outside sounds, don't turn up the volume so high that you are unable to hear what is around you.

Before You Begin

Important Battery Information

- Charge the unit for at least 2 hours before first use.
- Charge the unit for at least 2 hours after putting away the unit for a long time.
- The battery used in this device may present a risk of fire or chemical burn if mistreated. Do not separately recharge, disassemble, heat above 100°C (212°F), or incinerate.
- **Battery replacement should only be made by a trained technician. Refer to Limited Warranty for details.**
- Do not attempt to open the unit. No user serviceable parts inside.
- To reduce risk of injury, use only rechargeable batteries recommended by the manufacturer for this product. Other types of batteries may burst causing damage and personal injury.
- Keep the unit away from children. Do not disassemble or incinerate.
- Use USB port of PC or the specified charger (not included). Use of another charger may present a risk of fire or explosion.

Caution

- The battery used in this device may present a risk of fire, explosion, or chemical burn if mistreated. Do not separately recharge, disassemble, incinerate, or expose to high temperatures. Examples of high temperatures that may damage your product include leaving it in a locked car in summer, or putting it on top of heat generating electronic devices (such as

power amplifiers and computer monitors).

- Dispose of used battery promptly. Keep away from children. Do not disassemble and do not dispose of in fire.



This symbol means that your inoperative electronic appliance must be collected separately and not mixed

with the household waste. The European Union has implemented a specific collection and recycling system for which manufacturers are responsible. This appliance has been designed and manufactured with high quality materials and components that can be recycled and reused. Electrical and electronic appliances are liable to contain parts that are necessary in order for the system to work properly but which can become a health and environmental hazard if they are not handled or disposed of in the proper way. Consequently, please do not throw out your inoperative appliance with the household waste. If you are the owner of the appliance, you must deposit it at the appropriate local collection point or leave it with the vendor when buying a new appliance.

- If you are a professional user, please follow your supplier's instructions.
- If the appliance is rented to you or left in your care, please contact your service provider. Help us protect the environment in which we live!

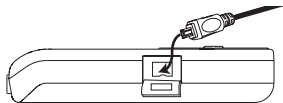
Connecting to Computer

EN

Charging the Battery

The player's battery can only be charged through the USB port of a computer.

1. Open the cover of the USB jack and connect the smaller end of the USB extension cable to the USB jack on the player.



2. Insert the larger end of the USB extension cable into the USB port on the computer tightly. Once connected, the display shows as below:



3. Press and hold [power] to enter battery charging mode. The display shows as below with the battery icon animating.



- Charge the unit for at least 2 hours before first use.
- You can still transfer files to the player in the battery charging mode.
- When the battery is full, the display shows "Battery full".



Note: The player will automatically go to battery charging mode if the battery level is low.

Attention: Do not separately recharge, disassemble, incinerate, or expose to high temperatures over 45°C (113°F). Examples of high temperatures that may damage your product include leaving it in a locked car in the summer, the dashboard of car or putting it on top of other heat generating electronics devices (such as power amplifiers and computer monitors).

Transferring Files to the Player

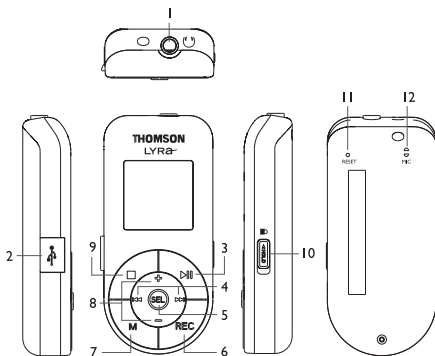
You should refer to the software manual for details in software installation, connecting your player with the computer and transferring files to the player.



Attention: Do not disconnect the USB connection during music download. Doing so may corrupt system files or the files being downloaded.

General Controls

EN



1. : headphone jack, input jack for line-in cable.
2. : USB jack.
3. : 1) press once to switch on the player; 2) starts and pauses playback.
4. Slide **SEL** to / to : 1) skip and search backward or forward a file; 2) go back or in a menu level in menu navigation; 3) select radio frequency or preset stations.
5. **SEL** : 1) press to select music files as My Selections; 2) in radio mode, press to select between preset and manual tuning modes.
6. **REC** : press to start and end recording;
7. **M** : press to access the player's menu.
8. Slide **SEL** to / to : 1) increase or decreases volume; 2) move upward or downward in menu navigation.
9. : 1) press once to stop playback; 2) press and hold to switch off the player.
10. : lock switch - slide to the locked icon to prevent accidental key activation. The lock icon shows on the display when keys are locked.
11. **RESET** : reset button.
12. **MIC** : microphone for voice recording.

File Menu

EN

How Files are Organized?

The files transferred to the player will be sorted automatically so that you can easily find and play them. They are sorted as below in the library mode:

- Music* (contains music files)
- Radio Recs (contains radio recording)
- Voice Recs (contains voice recording)
- Line-in Recs (contains line-in recording)
- My Selections (contains a playlist of your preferred music files)
- Pictures (contains photo files)
- Video (contains video files)



*Music files are further sorted as below:

- Artists
- Albums
- Titles
- Genres
- Years

The navigation menu is displayed when **M** is pressed during playback.

File Menu Navigation

- Slide to ►► to go to the next menu level.
- Slide to + / - to move along menu items at the same level.
- Slide to ◀◀ to go to the previous menu level.
- If the selected item is a music, audible, recording, photo or video files, slide to ►► or ►|| to start playback.

Player Menu

Player Menu

The player menu lets you access more features of the player.



Depending on the mode you are in (e.g. music playback, radio recording etc.), the items available in the player menu may vary.

Follow the steps below to access the player menu:

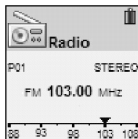
- If you are at the file menu navigation screen, press **M** once to access the player menu.



- If you are at the playback screen, press **M** twice to access the player menu.



- If you are in Radio, Voice Recording, Line-in Recording, Picture or Video mode, press **M** once to access the player menu.



Player Menu Navigation

- Slide to **»** to go to the next menu level
- Slide to **+/-** to move along menu items at the same level.
- Slide to **«** to go to the previous menu level.



Tips:

Refer to "Setting the Player" on page 19 for details of the player menu.

Audio Playback

EN

Switching On and Off Player

- Press **▶||** once to turn on the unit.
- To turn off the player completely, press and hold **■** .

Playing / Pausing

- Press **▶||** to begin playback.
- Press **▶||** once to pause playback, press again to resume playback.

During playback, file duration, elapsed playback time, file information show on the display.




Skipping Files

- To skip to the next file, slide to **▶▶** .
- To skip to the previous file, slide to **◀◀** within the beginning 4 seconds of the current file. Otherwise, slide to **◀◀** twice.

Scanning Files

- To scan backward quickly, slide to **◀◀** continuously during playback.
- To scan forward quickly, slide to **▶▶** continuously during playback.

Random Playback

1. Press **M** once or twice to access to player menu (refer to page 8 for more details).
2. Slide to **+ / -** to highlight "Shuffle".
3. Press **SEL** repeatedly to select the shuffle mode on or off. The shuffle icon  lights on the display when activated.



Tips:


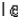
Shuffle on + Repeat one = a file is selected randomly and played repeatedly.

Shuffle on + Repeat All = Files are played in random order repeatedly.

Audio Playback

EN

Repeat Playback

1. Press **M** once or twice to access to player menu (refer to page 8 for more details).
 2. Slide to **+ / -** to highlight "Repeat".
 3. Press **SEL** repeatedly to select a repeat mode (Repeat One , Repeat All  and Repeat Off). The corresponding icon lights on the display.
2. Select "My Selections" folder from the file menu (see "File Menu - How Files are Organized" and "File Menu Navigation" for details).
 3. Press **▶||** to begin playback.

- To clear My Selections, press **M** once or twice to access to player menu (refer to page 8 for more details). Slide to **+ / -** to highlight "Clear MySel" and then press **SEL** to confirm clearing.

DSP

DSP feature consists a number of sound effects.

1. Press **M** once or twice to access to player menu (refer to page 8 for more details)
2. Slide to **+ / -** to highlight "DSP".
3. Press **SEL** repeatedly to select an effect mode (Flat, Bass, Pop, Rock and Jazz).

My Selections

My Selections is a playlist of your preferred music files (recorded files are not selectable).

1. Select your preferred files in one of the following ways:
 - Press **SEL** once while you are listening to a preferred music file with "Added to MySel" shows on the display briefly.
 - Press **SEL** once while you are browsing music files in the navigation menu with "Added to MySel" shows on the

Radio

EN

Listening to Radio

1. Press **M** once or twice to access to player menu (refer to page 8 for more details).
2. While "Go to" is highlighted in the menu, slide to **»** to enter into the submenu.

Go to	>
Shuffle	Off
Repeat	Off
DSP	Flat

3. While "Radio" is highlighted, press **»** to switch on the radio.

Radio
Voice Recording
Line-in Recording

Manual Tuning

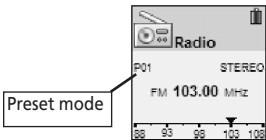
- Slide to **«** or **»** once to tune down or up frequency. or
- Slide to **«** or **»** continuously and release when you see "Searching..." to start automatic search for the next available station. or
- Slide to **«** or **»** continuously to tune down or up frequency at a faster rate until you release the button.

Manual and Preset Modes

Press **SEL** repeatedly to select between the two modes while listening to the radio.

Manual mode – tuning to stations manually,

Preset mode – selecting stations saved in preset memory.



Radio

EN

Saving Preset Stations

1. Tune to a station to be saved as a preset station (refer to manual tuning).
2. Press **M**.
3. Slide to **+/-** to highlight "Save to Preset" and press **▶▶**.
4. Slide to **◀◀** or **▶▶** to select a preset number.
5. Press **▶||** to save station as selected preset number or press **M** to exit without saving.

Selecting Preset Stations

1. Make sure you are in preset mode.
2. Slide to **◀◀** or **▶▶** to select a preset number.

Clearing Presets

1. In preset mode, select the preset station to be cleared, press **M** to view the radio sub-menu.
2. Slide to **+/-** to highlight "Clear Preset".
3. Press **SEL** to confirm clearing.

Suppressing Stereo Signal

If FM stereo reception is weak, select mono sound to reduce the noise.

1. While listening to the radio, press **M** to view the radio sub-menu.
2. Slide to **+/-** to highlight "Mode".
3. Press **SEL** repeatedly to select between stereo or mono sound.

Stop Listening to the Radio

- Press and hold **■** to switch off the player. OR
- Press **M** while listening to the radio. Select "Go to" and then "Library" by pressing **▶||** twice. The player will return to file navigation you were last at. If you were looking at an artist, then you will return to that list of artists.

Radio Recording

EN

Radio programs can be recorded as mp3 files.

1. Tune to the station to be recorded.
2. Press **REC** to start recording. Press **REC** to pause recording and again to resume.
3. Press **■** to stop recording.



Recording Duration

1. While listening to the radio, press **M** to view the radio sub-menu.
2. Slide to **+/-** to highlight "RecDur" (recording duration).
3. Press **SEL** repeatedly to select among max, 1 hour, 30 min and 5 min.

Listening to Recordings

1. In the file menu, slide to **+/-** to highlight "Radio Recs".
2. Slide to **▶▶** to view recorded files and then slide to **+/-** to highlight a desired one.
3. Press **▶||** or slide to **▶▶** to play the highlighted file.

Deleting Recording

1. In the navigation menu, slide **+/-** to highlight "Radio Recs".
2. Slide to **▶▶** to view recorded files and then slide to **+/-** to highlight an unwanted one.
3. Press **M** and then slide to **+/-** to highlight "Delete File".
4. Press **SEL** to confirm deletion.

Voice Recording

Voice can be recorded through the microphone as wav files.

1. Press **M** once or twice to access to player menu (refer to page 8 for more details).
2. While "Go to" is highlighted in the menu, slide to **»** to enter into the submenu.
3. Slide to **+/-** to highlight "Voice Recording".



4. Press **SEL**, "Ready" shows on the display.
5. Press **REC** to start recording. Press **REC** to pause recording. Press again to resume.
6. Press **■** to stop recording.



Recording Duration

1. Press **M** in voice recording mode to view its sub-menu.
2. Slide to **+/-** to highlight "RecDur" (recording duration).
3. Press **SEL** repeatedly to select among max, 1 hour, 30 min and 5 min.

Listening to Recording

1. In the file menu, slide **+/-** to highlight "Voice Recs".
2. Slide to **»** to view recorded files and slide to **+/-** to highlight a desired one.
3. Press **▶||** or slide to **»** to play the highlighted file.

Deleting Recording

1. In the file menu, slide to **+/-** to highlight "Voice Recs".
2. Slide to **»** to view recorded files and slide to **+/-** to highlight an unwanted one.
3. Press **M** and then slide to **+/-** to highlight "Delete File".
4. Press **SEL** to confirm deletion.

EN

Line-in Recording

EN

Recording as mp3 files can be made through a line-in cable connected to the headphone jack.

1. Press **M** once or twice to access to player menu (refer to page 8 for more details).
2. While "Go to" is highlighted in the menu, slide to **»** to enter into the submenu.
3. Slide to **+/-** to highlight "Line-in Recording".



Radio
Voice Recording
Line-in Recording

4. Press **»**, "Ready" shows on the display.
5. Press **REC** to start recording. Press **REC** to pause recording. Press again to resume.
6. Press **■** to stop recording.



Recording Duration

1. Press **M** in line-in recording mode to view its sub-menu.
2. Slide to **+/-** to highlight "RecDur" (recording duration).
3. Press **SEL** repeatedly to select among max, 1 hour, 30 min and 5 min.

Listening to Recording

1. In the file menu, press **+/-** to highlight "Line-in Recs".
2. Slide to **»** to view recorded files and then slide to **+/-** to highlight a desired one.
3. Press **»** or slide to **»** to play the highlighted file.

Deleting Recording

1. In the file menu, slide to **+/-** to highlight "Line-in Recs".
2. Slide to **»** to view recorded files and then slide to **+/-** to highlight an unwanted one.
3. Press **M** and then slide to **+/-** to highlight "Delete File".
4. Press **SEL** to confirm deletion.



Tips:

Adjust the volume level of the source audio device in

order to achieve the optimum recording quality. The source output varies from model to model. You might want to experiment with a few recordings to determine the proper volume output of the source to get optimum recording quality from the player. Recommend starting the source at around the room volume level.

Picture Playback

Viewing Pictures

1. In the file menu, slide to + / - to highlight "Pictures".
2. Slide to ►► to view picture files and then slide to + / - to highlight a desired one.
3. Press ►► or slide to ►► to play the highlighted picture.
4. Slide to ◀◀ or ►► to view previous or next picture.
5. Press ■ to stop viewing pictures and return to the file menu.

Activating Slideshow

1. Press **M** once or twice to access to player menu (refer to page 8 for more details).
2. Slide to + / - to highlight "Slideshow".
3. Press **SEL** repeatedly to select among 3, 5, 10 and 15 seconds. This is the viewing duration of each picture in the slideshow.
- If you want to turn off slideshow, select "Off" in the above step.



Tips: Refer to the software user manual for transferring picture or video clip files to the player.



Attention: Picture and converted video clip files must be copied to root directory on the player for viewing.

Viewing Slideshow

1. In the file menu, slide to + / - to highlight "Pictures".
2. Press ►► to start slideshow. Pictures change according to the duration you have selected in "Activating Slideshow".
 - Slide to ◀◀ or ►► to view previous or next picture.
3. Press ■ to stop slideshow and return to the file menu.

EN

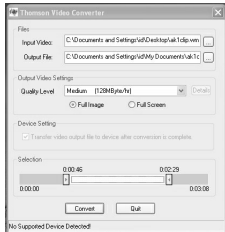
Video Playback


EN

Converting Video

Your video has to be converted to optimum size before transferring to this player for playback. To do so, you need to install the Thomson Video Converter in your computer (Windows 2000 and XP only).

1. Load the music management CD included with this player in your computer. Installation will start automatically. Follow the instructions on screen install the converter.



2. Launch the video converter after installation succeeded.
3. Under "Files", select the "Input Video" file and "Output File" locations from the file directory of your computer by clicking the corresponding button  on the right.
 - As a shortcut, you may also drag and drop the source video file to the "Input Video" field.
 - You can connect the player to the computer and select it as the output

location.

4. Under "Settings", select "Quality Level" as "Medium" which is the best for viewing in this player. You may also want to select between "Full Image" and "Full Screen".
 - Full image - the converter will keep the whole original image to be seen. However, the player's screen may not be occupied fully.
 - Full screen - the converter will resize the image to fit the player's screen. Some parts of the original image may be cut.



Original

Full image

Full screen

5. Under "Selection", drag the two arrows to assign the start and end points of the video to be converted. The corresponding time stamps show above the arrows for reference. If you need to convert the whole video, drag the arrows to the beginning and the end times of the video.
6. Click "Convert" to start video conversion. The converted file will be saved at the output location you have assigned.

Video Playback

EN



Tips: Refer to the software user manual for transferring picture or video clip files to the player.



Attention: Picture and converted video clip files must be copied to root directory on the player for viewing.

Before transferring video files to your portable device, you must use the video transcoder software to convert the video to a format suitable for playing in your portable device. This video transcoder software relies on the video codecs already installed in your computer. Make sure the video file you wish to convert plays on your computer before using the video transcoder software. Note that some video files that play on your computer may rely on specialized video playback applications that are not compatible with the video transcoder software.

3. Press ►|| or slide to ►► to play the highlighted video.
4. Press ■ to stop viewing video and return to the file menu.

Skipping Video

- To skip to the next video, slide to ►► .
- To skip to the previous video, slide to ◀◀ within the beginning 4 seconds of the current video. Otherwise, slide to ◀◀ twice.

Scanning Files

- To scan backward quickly, slide to ◀◀ continuously during playback.
- To scan forward quickly, slide to ►► continuously during playback.

Viewing Video

1. In the file menu, slide to + / - to highlight "Video".
2. Slide to ►► to view video files and then slide to + / - to highlight a desired one.

Setting the Player

EN

Settings

1. Press **M** once or twice to access to player menu (refer to page 8 for more details)
2. Slide to + / - to highlight "Settings".
3. Slide to ► to enter the setting menu. The following items are available. Slide to + / - to highlight a desired option.
 - **Brightness** (adjusts the display brightness, 8 levels available),
 - **Screensaver** (adjusts the duration before screensaver activation, 5 options available),
 - **Power Save** (adjusts the duration before automatic switch off, 5 options available),
 - **FreqStep** (Frequency Step) (selects between US and Europe frequency mode),
 - **Language** (selects the display language),
 - **Flip Display** (flips the display),
 - **Restore Defaults** (restore all settings to default values by pressing ►►).
4. Unless otherwise indicated, select available options within each item by pressing **SEL** repeatedly. To exit the setting menu, press **M**.

System Info

1. Press **M** once or twice to access to player menu (refer to page 8 for more details)
2. Slide to + / - to highlight "System Info".
3. Press ►► to check memory usage and firmware version.

More Information

EN

Troubleshooting Tips

The player does not turn on when the PLAY button is pressed?

- Battery may be empty.
- Press the reset button to reset the player.

Skipping tracks or bad sound quality?

- Repeat, random or program function may be activated.
- There may be strong magnetic fields (e.g. too close to TV) near the unit.
- Low Battery level.

Cannot perform playback?

- LOCK function may be activated.
- There may be no mp3/WMA tracks in the internal memory.

USB display does not appear when connected to computer?

- Check connection between your unit and the computer. (Refer to the software instruction manual)
- You may have to re-associate the drive letter that was assigned to the device. Please check your help on Windows for details on assigning a different drive letter.

Cannot playback tracks on the player.

- Make sure audio tracks are encoded in the mp3 or Windows Media formats at supported bitrates. Bitrates supported by the player: mp3 – 32 to 320 kbps
wma – 48 to 192 kbps
- WMA or audiobooks files may be DRM protected and you don't have the proper rights (license) to play the files.
- Check the website and/or application help system of the music download service provider from where the content was purchased for license acquisition details. For more information on how license acquisition works, go to www.microsoft.com/windows/windowmedia/forpros/drm/default.mspx.
- Play the original or downloaded song on your computer to ensure that there was nothing wrong with the encoding of the mp3 or WMA.

Cannot view picture or video clip files.

- Video clip files must be converted to optimum format by video converter.
- Picture and converted video clip files must be copied to root directory on the player for viewing.

More Information

EN

The player does not work after reformat.

- In case you need to reformat the player, it must be in FAT or FAT32 format. The player does not work in NTFS format.

My computer does not boot-up if the player is connected prior to turning on the PC.

- In order to improve the performance of your portable music player and allow a faster download experience, the storage in your device has been formatted using a larger sector size. The BIOS in some older computers does not support this larger sector size, which causes it not to recognize the device when the PC is booting-up. To correct this, simply disable the "boot from USB" option in your computer BIOS or wait until your computer has completed its boot-up sequence before connecting your portable music player.

Check for Updates

Visit <http://www.thomson-lyra.com> for the latest news and firmware upgrades for our Digital Audio Player. You must update your system after new downloads have been made in order for the new applications to be executed.



Note:

For better result, we recommend a constant encoded bit rate from 32 to 320kbps for mp3 and 48kbps to 192kbps for Windows Media Audio. Nevertheless, your unit can play tracks encoded in variable bit rate (VBR).



Note:

This unit may temporarily cease to function if subjected to electrostatic disturbance. To resume to normal functioning, you may use a pin to activate the reset button.

Specifications

Weight: 30g

Dimensions: 70.6 mm (Length) x 32mm (Width) x 14.4mm (Thickness).



THOMSON
46, quai Alphonse Le Gallo
92648 Boulogne
Cedex FRANCE
www.thomson.net

TOCOM (v2.0)

Download from Www.Somanuals.com. All Manuals Search And Download.

THOMSON

u s e r
m a n u a l

Computer
Connection &
Music Transfer

It is important to read this instruction book prior to using your new product for the first time.

Download from [Www.Somanuals.com](http://www.Somanuals.com). All Manuals Search And Download.

End User License Agreement

EN

IMPORTANT-READ CAREFULLY: This End User License Agreement ("Agreement") is a legal agreement between you and Thomson Inc. ("Thomson") for the Thomson Lyra device application/driver software program and associated documentation, if any ("Program").

ACKNOWLEDGMENT

BY INSTALLING THE SOFTWARE OR CLICKING ON THE ACCEPTANCE BUTTON OF THE SOFTWARE, COPYING OR OTHERWISE USING THE PROGRAM, YOU ACKNOWLEDGE AND AGREE THAT YOU HAVE READ THIS AGREEMENT, UNDERSTAND IT, AND AGREE TO BE BOUND BY ITS TERMS AND CONDITIONS. IF YOU DO NOT AGREE TO THE TERMS OF THIS LICENSE AGREEMENT, CLICK ON THE REJECTION BUTTON AND/OR DO NOT INSTALL THE SOFTWARE AND/OR DO NOT USE THE PROGRAM.

LICENSE

- a) You are granted the license (i) to use the Program on a single workstation and (ii) to make one (1) copy of the Program into any machine-readable form for backup of the Program, provided the copy contains all of the original Program's proprietary notices.
- b) You may transfer the Program and license, only as part of the Thomson Lyra device, to another party if the other party agrees to accept the terms and conditions of this Agreement. If you transfer the Program, you must at the same time either transfer all copies to the same party or destroy any copies not transferred.

LICENSE RESTRICTIONS

- a) Except for the licenses expressly granted to you in this Agreement, no other licenses are implied.
- b) You may not (i) modify, translate, reverse engineer, decompile, disassemble (except to the extent that this restriction is expressly prohibited by law) or create derivative works based upon the Program or (ii) copy the Program, except as

expressly permitted herein. You agree that you shall only use the Program in a manner that complies with all applicable laws in the jurisdictions in which you use the Program, including, but not limited to, applicable restrictions concerning copyright and other intellectual property rights.

- c) The Program may contain pre-release code that does not perform at the level of a final code release. In this case, the Program may not operate properly. Updated versions of the Program can be downloaded from www.thomson-lyra.com.
- d) Thomson is not obligated to provide support services for the Program.
- e) The Program is provided with "RESTRICTED RIGHTS". Use, duplication, or disclosure by the U.S. Government is subject to restrictions as set forth in subparagraph (c)(1)(ii) of DFARS 252.227-7013, or FAR 52.227-19, or in FAR 52.227-14 Alt. III, as applicable.

TERM AND TERMINATION

- a) The license is effective on the date you accept this Agreement, and remains in effect until terminated by either party.
- b) You may terminate this license without any notice or delay, by destroying or permanently erasing the Program and all copies thereof.
- c) If you use, copy, modify, or transfer the Program, or any copy, in whole or part, except as expressly provided for in this license, your license is automatically terminated.
- d) When the license is terminated, you must destroy or permanently erase the Program and all copies thereof.

End User License Agreement

EN

WARRANTY DISCLAIMER

THE PROGRAM IS PROVIDED "AS IS" WITHOUT WARRANTY OF ANY KIND, EITHER EXPRESSED OR IMPLIED, INCLUDING, BUT NOT LIMITED TO THE IMPLIED WARRANTIES OF MERCHANTABILITY, FITNESS FOR A PARTICULAR PURPOSE, TITLE OR NON-INFRINGEMENT. THE ENTIRE RISK AS TO THE QUALITY AND PERFORMANCE OF THE PROGRAM IS WITH YOU. SHOULD THE PROGRAM PROVE DEFECTIVE, YOU (AND NOT THOMSON, ITS SUPPLIERS, ITS AFFILIATES OR ITS DEALERS) ASSUME THE ENTIRE COST FOR ALL NECESSARY REPAIR OR CORRECTION.

This exclusion of warranty may not be allowed under some applicable laws. As a result, the above exclusion may not apply to you, and you may have other rights depending on the law that applies to you.

OWNERSHIP RIGHTS

All title and intellectual property rights in and to the Program and any copies thereof are owned by Thomson or its suppliers. All title and intellectual property rights in and to the content which may be accessed through use of the Program is the property of the respective content owner and may be protected by applicable copyright or other intellectual property laws and treaties. This license grants you no rights to use such content.

LIMITATION OF LIABILITY

a) TO THE MAXIMUM EXTENT PERMITTED BY APPLICABLE LAW, IN NO EVENT SHALL THOMSON, ITS AFFILIATES, OR ITS DEALERS BE LIABLE FOR ANY SPECIAL, INCIDENTAL, INDIRECT OR CONSEQUENTIAL DAMAGES WHATSOEVER (INCLUDING, WITHOUT LIMITATION, DAMAGES FOR LOSS OF PROFITS, BUSINESS INTERRUPTION, CORRUPTION OF FILES, LOSS OF BUSINESS INFORMATION OR ANY OTHER PECUNIARY

LOSS) REGARDLESS OF CAUSE OR FORM OF ACTION, INCLUDING CONTRACT, TORT OR NEGLIGENCE, ARISING OUT OF THE USE OF OR INABILITY TO USE THE PROGRAM, EVEN IF THOMSON HAS BEEN ADVISED OF THE POSSIBILITY OF SUCH DAMAGES. BECAUSE SOME STATES AND JURISDICTIONS DO NOT ALLOW THE EXCLUSION OR LIMITATION OF LIABILITY OF CONSEQUENTIAL OR INCIDENTAL DAMAGES, THE ABOVE LIMITATION MAY NOT APPLY TO YOU.

b) YOU ASSUME RESPONSIBILITY FOR THE SELECTION OF THE APPROPRIATE PROGRAM TO ACHIEVE YOUR INTENDED RESULTS, AND FOR THE INSTALLATION, USE, AND RESULTS OBTAINED.

WINDOWS MEDIA

This version of the Lyra Personal Digital Player ("Lyra Player") contains software licensed from Microsoft that enables you to play Windows Media Audio (WMA) files ("WMA Software"). The WMA Software is licensed to you for use with the RCA/THOMSON Portable Audio Device digital music player under the following conditions. By installing and using this version of the Lyra Player, you are agreeing to these conditions. IF YOU DO NOT AGREE TO THE CONDITIONS OF THIS END USER LICENSE AGREEMENT, DO NOT INSTALL OR USE THIS VERSION OF THE Lyra Player.

End User License Agreement

EN

The WMA Software is protected by copyright and other intellectual property laws. This protection also extends to documentation for the WMA Software, whether in written or electronic form.

GRANT OF LICENSE. The WMA Software is only licensed to you as follows:

You may use this version of the Lyra Player containing the WMA Software only with the Portable Audio Device player.

You may not reverse engineer, decompile, or disassemble the WMA Software, except and only to the extent that such activity is expressly permitted by applicable law in spite of this limitation.

You may transfer your right to use this version of the Lyra Player only as part of a sale or transfer of your Portable Audio Device player, on the condition that the recipient agrees to the conditions in this End User License Agreement. If the version of the Lyra Player that you are transferring is an upgrade, you must also transfer all prior versions of the Lyra Player that you have which include the WMA Software.

MICROSOFT IS NOT PROVIDING ANY WARRANTY OF ANY KIND TO YOU FOR THE WMA SOFTWARE, AND MICROSOFT MAKES NO REPRESENTATION CONCERNING THE OPERABILITY OF THE WMA SOFTWARE.

The WMA Software is of U.S. origin. Any export of this version of the Lyra Player must comply with all applicable international and national laws, including the U.S. Export Administration Regulations, that apply to the WMA Software incorporated in the Lyra Player.

THIRD PARTY SOFTWARE

ANY THIRD PARTY SOFTWARE THAT MAY BE PROVIDED WITH THE PROGRAM IS INCLUDED

FOR USE AT YOUR OPTION. IF YOU CHOOSE TO USE SUCH THIRD PARTY SOFTWARE, THEN SUCH USE SHALL BE GOVERNED BY SUCH THIRD PARTY'S LICENSE AGREEMENT, AN ELECTRONIC COPY OF WHICH WILL BE INSTALLED IN THE APPROPRIATE FOLDER ON YOUR COMPUTER UPON INSTALLATION OF THE SOFTWARE. THOMSON IS NOT RESPONSIBLE FOR ANY THIRD PARTY'S SOFTWARE AND SHALL HAVE NO LIABILITY FOR YOUR USE OF THIRD PARTY SOFTWARE.

GOVERNING LAW

This Agreement is governed by the laws of France, without regard to its conflict of laws.

GENERAL TERMS

This Agreement can only be modified by a written agreement signed by you and Thomson, and changes from the terms and conditions of this Agreement made in any other manner will be of no effect. If any portion of this Agreement shall be held invalid, illegal, or unenforceable, the validity, legality, and enforceability of the remainder of the Agreement shall not in any way be affected or impaired thereby. This Agreement is the complete and exclusive statement of the agreement between you and Thomson, which supersedes all proposals or prior agreements, oral or written, and all other communications between you and Thomson, relating to the subject matter of this Agreement.

Table of Contents

EN

End User License Agreement

Table of Contents

Before You Begin1

Computer System Requirements . . .1

What's so special about this mp3
player?2

Getting Started3

Insert the Included CD-ROM into
CD-ROM Drive3

Connecting to the Computer . .4

Connecting the Player to the
Computer4

Transferring Music5

Transferring Files to the Digital
Audio Player5

Launch the MusicMatch Jukebox
software6

Transferring Files via MusicMatch
Jukebox7

Transferring Files via Windows Media
Player8

Transferring Files via Windows Explorer
(Drag and Drop)9

Profiling (Model Dependent) .10

Disconnecting the Player11

Disconnecting Your Player from
the Computer11

Troubleshooting Tips12

The descriptions and characteristics given in this document are given as a general indication and not as a guarantee. In order to provide the highest quality product possible, we reserve the right to make any improvement or modification without prior notice. The English version serves as the final reference on all products and operational details should any discrepancies arise in other languages.

Download from www.Somanuals.com. All Manuals Search And Download.

Before You Begin

EN

Dear THOMSON Customer, Thank you for purchasing the Thomson Digital Audio Player. Our products will play open mp3 and Windows Media™ audio (WMA) content and for certain models, content purchased from most online music download services.

After purchasing and downloading music to your PC, you are now ready to move content to your player. To transfer the music, you may use the applications recommended by the online music download service.

Computer System Requirements

- Pentium III 500MHz or higher recommended
- Windows® 2000, or XP
- Internet Explorer 4.0 or higher
- Internet access
- 100MB free hard disk space for the software
- 64MB RAM (128 MB recommended)
- CD-ROM drive capable of digital audio extraction
- USB port (2.0 recommended)
- Sound card



Warning:

Use of this product is for your personal use only. Unauthorized recording or duplication of copyrighted material may infringe upon the rights of third parties and may be contrary to copyright laws.

Before You Begin

EN

What's so special about this mp3 player?

This player is meant to play mp3 and Windows Media™ audio files recorded in the built-in flash memory.

To do so, you need the use of a Windows computer with USB port, extension cable (included) and music management software (MusicMatch Jukebox).

The Music Management CD that comes with your Lyra Digital Audio Player contains all of the necessary software components you need to make your Lyra Digital Audio Player work properly.

These components do the following:

- enable you to transfer files from your computer to your Lyra Digital Audio Player.
- use the MusicMatch Jukebox software to organize your music collection and transfer the music to your Lyra Digital Audio Player.

The MusicMatch Jukebox™ software compresses audio files (from music CDs) to the mp3 or Windows Media Audio (WMA) format so you can play them on your Lyra Digital Audio Player. The MusicMatch software also enables you to download files from the internet that are already compressed and then transfer those files to your Lyra player (or play the music on your computer).

Getting Started

EN

Inserting the Included CD-ROM into CD-ROM Drive

1. Turn on your computer and place the Music Management CD that comes with your digital audio player into your computer.



Note:

Don't connect the USB device to the PC or digital audio player before or during the CD-ROM installation.

If you're running Windows 2000/ XP, no additional drivers are required.

2. If the setup screen does not appear, double click My Computer, double click your CD-ROM drive icon, and double click "Install" to run the installer.



Note: The Music

Management CD may contain one or more music management software that can help transfer music content to your digital audio player. Please refer to the section on your installed software for basic transfer operations.

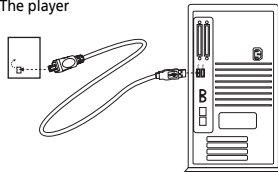
Connecting to the Computer

EN

Connecting the Player to the Computer

Connect the Digital Audio Player to your computer. If a USB connection cable is provided, connect it to the player first before the computer. The larger end of the cable should be connected to the computer while the smaller end to the player.

The player



Some models can be directly connected to the USB port of the computer. If necessary, an optional USB extension cable can be used.

The digital audio player will appear as a removable disk drive*.

* Depending on device and computer operating system, the digital audio player will appear as a removable disk drive (MSC device) or a MTP device.

The player may allow user to select MSC or MTP mode, please check the settings menu in the player.



Note It might take several seconds for the device (the Digital Audio Player) to be detected, especially in Windows 2000/XP. Click Refresh in My Computer or Explorer to make sure the device has been detected.



Note The Digital Audio Player is capable of transferring files at full-speed when a USB 2.0 connection is used. USB 2.0 is up to 40 times faster than USB 1.1. If a USB 2.0 port is available on your computer, use it to connect to your Digital Audio Player. The player is still backward compatible with the older USB 1.1 ports. However, you will not be able to take full advantage of the potential speed increase.

Basically, computer can identify the device type automatically. If both OS and device support MTP, the player will appear as a MTP device, otherwise the player will appear as a removable disk drive.

Currently only XP with Windows Media Player 10 installed could support MTP and MSC. Other OS (Win98, ME, 2000, XP without WMP10, and Mac OS) support MSC only.

Transferring Music

EN

Transferring Files to a Digital Audio Player

Depending on the availability of software on your Music Management CD specific to your digital audio player, you can transfer files to your Digital Audio Player via 1) MusicMatch Jukebox, 2) Windows Media Player or 3) Windows Explorer (requires no software installation).

If your Digital Audio Player isn't already connected to your computer, connect it to the computer using the provided USB cable as illustrated on the previous page.

- Transferring files via MusicMatch Jukebox - refer to page 6,
- Transferring files via Windows Media Player - refer to page 8,
- Transferring files via Windows Explorer (drag-and-drop) - refer to page 9.



Attention

Do not disconnect the USB connection during music download. Doing so may corrupt system files or the files being downloaded.



Note

Secure music download files can be transferred to your player through Windows Media Player or MusicMatch Jukebox. (Note: Services and applications must be Windows Media audio-compliant and support Digital Rights Management. Windows XP with Service Pack 1 required.) (Apple iTunes™ music content is not supported).

For more information on MusicMatch Jukebox, visit www.musicmatch.com.

For more information on Windows Media Player, visit <http://www.microsoft.com/windows/windowsmedia>.

Some wma files may be DRM protected. You must acquire licenses for DRM protected wma files before they can be played on the player. For more information, go to www.microsoft.com/windows/windowsmedia/drm

Transferring Music

EN

Launch the MusicMatch Jukebox software

The MusicMatch software converts audio files to the mp3 and WMA formats so you can play them on your Lyra Digital Audio Player.

1. Remove the Music Management CD from your computer.
2. Start the MusicMatch Jukebox software (double click on the MusicMatch icon in your system tray or on your desktop).



The MusicMatch icon found in your computer's system tray.



Note

It is recommended to uninstall any previous installations of the MusicMatch Jukebox software before proceeding. After the uninstall process has been completed, delete the MusicMatch folder found under C:\Program Files.



Attention

Make sure all data are transferred to the Digital Audio Player before unplugging the USB connection.

Transferring Music

EN

Transferring Files via MusicMatch Jukebox

1. Drag and drop desired tracks from the Music Library to the Playlist display and save the playlist.



Note

Be sure to save the playlist or it will not be displayed on the playlist window of the Portable Device Manager screen.

2. From the menu area, select *Files/Send to Portable Device* or click *Send to Portable* under the *copy* item on the left side of the MusicMatch Jukebox screen to display the Portable Device Manager screen.
3. Click on *Options* and select your portable device under *Select Device*. Click *OK*.
Your device should be listed under *Portable Device*.
4. Select the playlist item and drag it to the active device listed under *Portable Device*. Only those playlists saved in step 1 are displayed on the playlist window.
The songs in the playlist will now be automatically transferred to your Lyra Digital Audio Player.

During transfer a progress indicator appears in the *Portable Device Manager* screen, and "USB Transferring" flashes in the Lyra player's LCD.



Attention

Make sure all data are transferred to the Digital Audio Player before unplugging the USB connection.



Note:

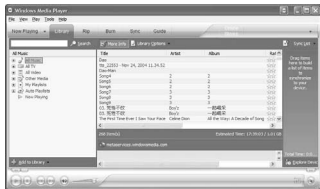
MTP device will show device name instead of drive letter.

Transferring Music

Transferring Files via Windows Media Player

If you want to take your music collection with you, you can easily synchronize items in your library to your digital audio player. The Sync feature in the latest version of Windows Media Player and allows you to synchronize files in categories and playlists in your library to your digital audio player. For complete details, see the "Synchronizing media to your device" topic in the Windows Media Player help documentation.

1. Connect your player to the computer and open Windows Media Player, select Library from the menu bar, a screen will appear as below:



2. From the left column, select the songs, categories and/or playlist items you want to copy to the player.
3. Drag the selected items to the right column.

4. Select Sync from the menu bar, a screen will appear as below:



5. Select Start Sync, the selected items will now be automatically transferred to your player.



Attention

Make sure all data are transferred to the Digital Audio Player before unplugging the USB connection.



Note:

MTP device will show device name instead of drive letter.

Transferring Music

EN Transferring Files via Windows Explorer (Drag and Drop)

From Windows Explorer, highlight all the files/folders you want to transfer to your Digital Audio Player and drag them to the drive letter that is associated with it.



Attention

Make sure all data are transferred to the Digital Audio Player before unplugging the USB connection.



Attention

Some wma files may be DRM protected and they must be transferred to your player via music management software that supports Windows Media DRM such as Yahoo! Music Engine and Windows Media Player. You cannot listen to these protected files if transferred via Windows Explorer. For more information, go to www.microsoft.com/windows/windowsmedia/drm

Transferring Music

EN

If your player is in MTP mode:

- Device name instead of drive letter will show on the computer.
- If computer installed Windows Media Player 10, MTP device will show 2 folders – Data and Media - on top level. mp3 and WMA files could be copied only to Media folder, other types of files could be copied only to Data folder. Some players also allow user to copy picture and video files to Media folder.
- To create a folder on MTP device, first create the folder with same name on local disk, then drag and drop the folder to device. (User could not create folder on MTP device directly.)
- Files cannot be executed or open directly from MTP device. Please copy the file to local disk first.

Profiling (Model Dependent)


Some models need to be profiled after file transfer. Profiling helps sort audio files on your player so that you can view in the navigation menus and play them properly.

Please check the player's user manual if this step is necessary on your player. Follow the instruction to profile your newly transferred files.

Disconnecting the Player

EN


Disconnecting Your Player from the Computer

For Windows XP, from the System Tray, double click the left mouse button on the icon  and select *Safely Remove Hardware*. Select the drive corresponding to your player and click **STOP**.



The *Stop a Hardware device* screen appears. Select the device to be stopped again for confirmation and click **OK**.



You can also stop your player by left clicking on the  icon from the system tray and selecting the drive corresponding to your player.

Before disconnecting the USB connection from the computer or the Digital Audio Player, be sure the "Safe to Remove Hardware" message is displayed.



Attention

If you want to go back to USB mode for file transfer at this stage, you need to unplug and connect the player to the PC again.



Attention

Make sure all data are transferred to the Digital Audio Player before unplugging the USB connection.

The description on this page is based on Windows XP. If you are running other operating systems, there may be some differences. See the Windows Help for details about safely removing hardware.



Note:

If your player is in MTP mode, it can be removed directly.

Troubleshooting Tips

EN

After connecting the player to computer, "USB connected" does not appear on the display.

- Make sure the device is powered on. Some players do not automatically come on when plugged into the computer.
- Make sure that the USB connections to the computer and device are securely in.

Cannot access the player via Windows 2000 computer.

- Install the Service Pack 3 for Windows 2000. Visit www.windowsupdate.microsoft.com to check for the latest updates.

Cannot playback tracks on the player.

- Make sure audio tracks are encoded in the mp3 or Windows Media formats at supported bitrates. Please check the player's user manual for bitrates supported.
- WMA files may be DRM protected and you don't have the proper rights (license) to play the files.

Check the website and/or application help system of the music download service provider from where the content was purchased from for license acquisition details.

For more information on how license acquisition works, go to www.microsoft.com/windowsmedia/drm

What are MTP and MSC modes?

- MTP (Media Transfer Protocol) mode is essential if you want to transfer DRM content to your player. In MTP mode your player will no longer show up as a drive letter. Programs that were designed to work with a device that shows up as a drive letter will not be able to work directly with the player.
- MSC (Mass Storage Class) mode – device is in this mode when connected to Windows 98, ME, 2000 and XP (without Window Media Player 10) operating systems. In this mode, the device will show up as a drive letter on your PC and behaves as a detachable drive for file transfer in one or both directions.



THOMSON
46, quai Alphonse Le Gallo
92648 Boulogne
Cedex FRANCE
www.thomson.net

TOCOM (v1.0) MMJB (XP2K)

Free Manuals Download Website

<http://myh66.com>

<http://usermanuals.us>

<http://www.somanuals.com>

<http://www.4manuals.cc>

<http://www.manual-lib.com>

<http://www.404manual.com>

<http://www.luxmanual.com>

<http://aubethermostatmanual.com>

Golf course search by state

<http://golfingnear.com>

Email search by domain

<http://emailbydomain.com>

Auto manuals search

<http://auto.somanuals.com>

TV manuals search

<http://tv.somanuals.com>