

# THOMSON

u s e r  
m a n u a l

## PDP2356K PDP2362K

Software Installation  
MusicMatch Jukebox™ Software  
(mp3, Windows Media™ Audio)

Installation des logiciels  
Logiciel MusicMatch Jukebox™  
(mp3, Windows Media™ Audio)

Instalación de software  
Software MusicMatch Jukebox™  
(mp3, Reproductor de Audio  
para Windows Media™)

**THOMSON**  
46, quai Alphonse Le Gallo  
92648 Boulogne  
Cedex FRANCE  
[www.thomson.net](http://www.thomson.net)

56038420

It is important to read this instruction book prior to using your new product for the first time.  
Es importante leer este manual antes de usar por vez primera su equipo.

# End User License Agreement

EN

**IMPORTANT-READ CAREFULLY: This End User License Agreement ("Agreement") is a legal agreement between you and Thomson Inc. ("Thomson") for the Thomson Lyra device application/driver software program and associated documentation, if any ("Program").**

## ACKNOWLEDGMENT

BY INSTALLING THE SOFTWARE OR CLICKING ON THE ACCEPTANCE BUTTON OF THE SOFTWARE, COPYING OR OTHERWISE USING THE PROGRAM, YOU ACKNOWLEDGE AND AGREE THAT YOU HAVE READ THIS AGREEMENT, UNDERSTAND IT, AND AGREE TO BE BOUND BY ITS TERMS AND CONDITIONS. IF YOU DO NOT AGREE TO THE TERMS OF THIS LICENSE AGREEMENT, CLICK ON THE REJECTION BUTTON AND/OR DO NOT INSTALL THE SOFTWARE AND/OR DO NOT USE THE PROGRAM.

## LICENSE

- a) You are granted the license (i) to use the Program on a single workstation and (ii) to make one (1) copy of the Program into any machine-readable form for backup of the Program, provided the copy contains all of the original Program's proprietary notices.
- b) You may transfer the Program and license, only as part of the Thomson Lyra device, to another party if the other party agrees to accept the terms and conditions of this Agreement. If you transfer the Program, you must at the same time either transfer all copies to the same party or destroy any copies not transferred.

# End User License Agreement

EN

## LICENSE RESTRICTIONS

- a) Except for the licenses expressly granted to you in this Agreement, no other licenses are implied.
- b) You may not (i) modify, translate, reverse engineer, decompile, disassemble (except to the extent that this restriction is expressly prohibited by law) or create derivative works based upon the Program or (ii) copy the Program, except as expressly permitted herein. You agree that you shall only use the Program in a manner that complies with all applicable laws in the jurisdictions in which you use the Program, including, but not limited to, applicable restrictions concerning copyright and other intellectual property rights.
- c) The Program may contain pre-release code that does not perform at the level of a final code release. In this case, the Program may not operate properly. Updated versions of the Program can be downloaded from [www.thomson-lyra.com](http://www.thomson-lyra.com).
- d) Thomson is not obligated to provide support services for the Program.

e) The Program is provided with "RESTRICTED RIGHTS". Use, duplication, or disclosure by the U.S. Government is subject to restrictions as set forth in subparagraph (c)(1)(ii) of DFARS 252.227-7013, or FAR 52.227-19, or in FAR 52.227-14 Alt. III, as applicable.

## TERM AND TERMINATION

- a) The license is effective on the date you accept this Agreement, and remains in effect until terminated by either party.
- b) You may terminate this license without any notice or delay, by destroying or permanently erasing the Program and all copies thereof.
- c) If you use, copy, modify, or transfer the Program, or any copy, in whole or part, except as expressly provided for in this license, your license is automatically terminated.
- d) When the license is terminated, you must destroy or permanently erase the Program and all copies thereof.

# End User License Agreement

EN

## WARRANTY DISCLAIMER

THE PROGRAM IS PROVIDED "AS IS" WITHOUT WARRANTY OF ANY KIND, EITHER EXPRESSED OR IMPLIED, INCLUDING, BUT NOT LIMITED TO THE IMPLIED WARRANTIES OF MERCHANTABILITY, FITNESS FOR A PARTICULAR PURPOSE, TITLE OR NON-INFRINGEMENT. THE ENTIRE RISK AS TO THE QUALITY AND PERFORMANCE OF THE PROGRAM IS WITH YOU. SHOULD THE PROGRAM PROVE DEFECTIVE, YOU (AND NOT THOMSON, ITS SUPPLIERS, ITS AFFILIATES OR ITS DEALERS) ASSUME THE ENTIRE COST FOR ALL NECESSARY REPAIR OR CORRECTION.

This exclusion of warranty may not be allowed under some applicable laws. As a result, the above exclusion may not apply to you, and you may have other rights depending on the law that applies to you.

## OWNERSHIP RIGHTS

All title and intellectual property rights in and to the Program and any copies thereof are owned by Thomson or its suppliers. All title and intellectual property rights in and to the content which may be accessed through use of the Program is the property of the respective content owner and may be protected by applicable copyright or other intellectual property laws and treaties. This license grants you no rights to use such content.

# End User License Agreement

EN

## LIMITATION OF LIABILITY

a) TO THE MAXIMUM EXTENT PERMITTED BY APPLICABLE LAW, IN NO EVENT SHALL THOMSON, ITS AFFILIATES, OR ITS DEALERS BE LIABLE FOR ANY SPECIAL, INCIDENTAL, INDIRECT OR CONSEQUENTIAL DAMAGES WHATSOEVER (INCLUDING, WITHOUT LIMITATION, DAMAGES FOR LOSS OF PROFITS, BUSINESS INTERRUPTION, CORRUPTION OF FILES, LOSS OF BUSINESS INFORMATION OR ANY OTHER PECUNIARY LOSS) REGARDLESS OF CAUSE OR FORM OF ACTION, INCLUDING CONTRACT, TORT OR NEGLIGENCE, ARISING OUT OF THE USE OF OR INABILITY TO USE THE PROGRAM, EVEN IF THOMSON HAS BEEN ADVISED OF THE POSSIBILITY OF SUCH DAMAGES. BECAUSE SOME STATES AND JURISDICTIONS DO NOT ALLOW THE EXCLUSION OR LIMITATION OF LIABILITY OF CONSEQUENTIAL OR INCIDENTAL DAMAGES, THE ABOVE LIMITATION MAY NOT APPLY TO YOU.

b) YOU ASSUME RESPONSIBILITY FOR THE SELECTION OF THE APPROPRIATE PROGRAM TO ACHIEVE YOUR INTENDED RESULTS, AND FOR THE INSTALLATION, USE, AND RESULTS OBTAINED.

## WINDOWS MEDIA

This version of the Lyra Personal Digital Player ("Lyra Player") contains software licensed from Microsoft that enables you to play Windows Media Audio (WMA) files ("WMA Software"). The WMA Software is licensed to you for use with the RCA/THOMSON Portable Audio Device digital music player under the following conditions. By installing and using this version of the Lyra Player, you are agreeing to these conditions. IF YOU DO NOT AGREE TO THE CONDITIONS OF THIS END USER LICENSE AGREEMENT, DO NOT INSTALL OR USE THIS VERSION OF THE Lyra Player.

# End User License Agreement

EN

The WMA Software is protected by copyright and other intellectual property laws. This protection also extends to documentation for the WMA Software, whether in written or electronic form.

**GRANT OF LICENSE.** The WMA Software is only licensed to you as follows: You may use this version of the Lyra Player containing the WMA Software only with the Portable Audio Device player.

You may not reverse engineer, decompile, or disassemble the WMA Software, except and only to the extent that such activity is expressly permitted by applicable law in spite of this limitation.

You may transfer your right to use this version of the Lyra Player only as part of a sale or transfer of your Portable Audio Device player, on the condition that the recipient agrees to the conditions in this End User License Agreement. If the version of the Lyra Player that you are transferring is an upgrade, you must also transfer all prior versions of the Lyra Player that you have which include the WMA Software.

MICROSOFT IS NOT PROVIDING ANY WARRANTY OF ANY KIND TO YOU FOR THE WMA SOFTWARE, AND MICROSOFT MAKES NO REPRESENTATION CONCERNING THE OPERABILITY OF THE WMA SOFTWARE.

The WMA Software is of U.S. origin. Any export of this version of the Lyra Player must comply with all applicable international and national laws, including the U.S. Export Administration Regulations, that apply to the WMA Software incorporated in the Lyra Player.

# End User License Agreement

EN

## THIRD PARTY SOFTWARE

ANY THIRD PARTY SOFTWARE THAT MAY BE PROVIDED WITH THE PROGRAM IS INCLUDED FOR USE AT YOUR OPTION. IF YOU CHOOSE TO USE SUCH THIRD PARTY SOFTWARE, THEN SUCH USE SHALL BE GOVERNED BY SUCH THIRD PARTY'S LICENSE AGREEMENT, AN ELECTRONIC COPY OF WHICH WILL BE INSTALLED IN THE APPROPRIATE FOLDER ON YOUR COMPUTER UPON INSTALLATION OF THE SOFTWARE. THOMSON IS NOT RESPONSIBLE FOR ANY THIRD PARTY'S SOFTWARE AND SHALL HAVE NO LIABILITY FOR YOUR USE OF THIRD PARTY SOFTWARE.

## GOVERNING LAW

This Agreement is governed by the laws of France, without regard to its conflict of laws.

## GENERAL TERMS

This Agreement can only be modified by a written agreement signed by you and Thomson, and changes from the terms and conditions of this Agreement made in any other manner will be of no effect. If any portion of this Agreement shall be held invalid, illegal, or unenforceable, the validity, legality, and enforceability of the remainder of the Agreement shall not in any way be affected or impaired thereby. This Agreement is the complete and exclusive statement of the agreement between you and Thomson, which supersedes all proposals or prior agreements, oral or written, and all other communications between you and Thomson, relating to the subject matter of this Agreement.

# Table of Contents

EN

## End User License Agreement

### Table of Contents

#### Before You Begin . . . . .1

Computer System Requirements . . .1
What's so special about this mp3 player? . . . . .2

#### Getting Started . . . . .3

Insert the Included CD-ROM into CD-ROM Drive . . . . .3
Welcome Screen . . . . .3
Purchased Location . . . . .3
Install the USB Driver (Windows 98SE and Me Only) . . . . .4
Install Necessary Software . . . . .4
End User License Agreement . . .5
Install MusicMatch Jukebox . . .5
Install Additional Services . . . .6
Audible Welcome . . . . .6
Rebooting the Computer . . . . .6
Installation Completed . . . . .6
Launch the MusicMatch Software . .7

#### Transferring Music . . . . .7

Connecting the Player to the Computer . . . . .7
Transferring Files to the Lyra Digital Audio Player . . . . .8
Transfer Files via MusicMatch Jukebox . . . . .9
Transfer Files via Windows Explorer (Drag and Drop) . . . . .10
Disconnecting Your Lyra from the Computer . . . . .11

#### File Management . . . . .12

System Tray Applications . . . . .12
Profile . . . . .12

#### Troubleshooting Tips . . . . .13

# Before You Begin

EN

**Dear Thomson Customer,**  
**Thank you for purchasing the Thomson Lyra™ Digital Audio Player. This product will play open mp3 and Windows Media™ audio (WMA) content as well as content purchased from most online music download services.**

**After purchasing and downloading music to your PC, you are now ready to move content to your player. To transfer the music, you must use Windows Media Player or the application recommended by the online music download service.**

**(Note: Services and applications must be Windows Media audio-compliant and support Digital Rights Management.)**



#### Warning:

Use of this product is for your personal use only. Unauthorized recording or duplication of copyrighted material may infringe upon the rights of third parties and may be contrary to copyright laws.

## Computer System Requirements

- Pentium III 500MHz or higher recommended
- Macintosh iMac G3 or higher
- Windows® 98SE, Me, 2000, or XP
- Mac OS X Version 10.1.5 or higher
- Internet Explorer 4.0 or higher
- Internet access
- 100MB free hard disk space for the software
- 64MB RAM (128 MB recommended)
- CD-ROM drive capable of digital audio extraction
- USB port (2.0 recommended)
- Sound card



#### Note

Make sure the tracks are encoded in mp3 or Windows Media formats and supported bitrates. Bitrates supported by the player:  
mp3 - 32 to 320 kbps  
wma - 48 to 192 kbps

The descriptions and characteristics given in this document are given as a general indication and not as a guarantee. In order to provide the highest quality product possible, we reserve the right to make any improvement or modification without prior notice. The English version serves as the final reference. On all products and operational details should any discrepancies arise in other languages.

# Before You Begin

EN

## What's so special about this mp3 player?

This player is meant to play mp3, audible and Windows Media™ audio files encoded on a memory card or recorded in the built-in flash memory. To do so, you need the use of a Windows computer with USB port, connection cable (included) and a music management software (MusicMatch Jukebox).

The Music Management CD that comes with your Lyra Digital Audio Player contains all of the necessary software components you need to make your Lyra Digital Audio Player work properly.

These components do the following:

- install USB driver for Windows 98SE/Me users. (Refer to page 4)
- enable you to transfer files from your computer to your Lyra Digital Audio Player.

- profile the player (Refer to page 12).
- use the MusicMatch Jukebox software to organize your music collection and transfer the music to your Lyra Digital Audio Player.

The MusicMatch Jukebox™ software compresses audio files (from music CDs) to the mp3, mp3PRO or Windows Media Audio (WMA) format so you can play them on your Lyra Digital Audio Player. The MusicMatch software also enables you to download files from the internet that are already compressed and then transfer those files to your Lyra player (or play the music on your computer).

# Getting Started

EN

## Insert the Included CD-ROM into CD-ROM Drive

Turn on your computer and place the Music Management CD that came with your Lyra Digital Audio Player into your computer.



### Note

Don't connect the USB cable to the PC or Lyra Digital Audio Player before or during the driver installation.



### Note

- If you're running Windows 2000/XP no additional drivers are required.
- If you're running Windows 98SE/Me, you must install the USB drivers from the CD-ROM in order for the Lyra Digital Audio Player to function properly.

## Welcome Screen

If the setup screen does not appear, double click *My Computer*, double click your CD-ROM drive icon, and double click *Install* to run the installer.



# Getting Started

## EN Preferred Language

Select your preferred language, then click *Next* to continue.



## Install the USB Driver (Windows 98SE and Me Only)

For Windows 98SE and Me systems, you need to install a USB driver before your computer can recognize your Lyra player.



### Note

The installation program will detect whether your system requires a USB driver. The program will install the USB driver first, restart the computer, and then begin to install the necessary software.

# Getting Started

## Install Necessary Software

Click *Install*, and follow the on-screen instructions to install all necessary files.



## End User License Agreement

Please read the End User License Agreement carefully, you can quit the installation anytime if you do not agree with it.

Click *Accept* to continue installation.



## Install MusicMatch Jukebox

MusicMatch Jukebox is a music management software used to organize and manage digital audio files and can be used to transfer the music to your Lyra Digital Audio Player.

1. Click *Install* to run the MusicMatch setup program.



Wait while the installation program begins. It may take up to 20 seconds for the installer to start.

2. Follow the on-screen instructions to setup and install MusicMatch Jukebox.

For more information on MusicMatch Jukebox, click *Tutorials* on the CD or go to [www.musicmatch.com](http://www.musicmatch.com).



### Note

It is recommended to uninstall any previous installations of the MusicMatch Jukebox software before proceeding. After the uninstall process has been completed, delete the MusicMatch folder found under *C:\Program Files*.

# Getting Started

EN

## Audible welcome

Click for additional information about audible.



## Install Additional Services

Click for additional digital music services provided by our partners.



## Rebooting the computer

You may need to restart your computer for software to run properly.



## Installation completed

Installation is completed! You can go to the manufacturer's website for more information.



# Getting Started

EN

## Launch the MusicMatch software

The MusicMatch software converts audio files to the mp3, mp3PRO and WMA formats so you can play them on your Lyra Digital Audio Player.

1. Remove the Music Management CD from your computer.

2. Start the MusicMatch Jukebox software (double click on the MusicMatch icon in your system tray or on your desktop).



The MusicMatch icon found in your computer's system tray.

# Transferring Music

## Connecting the Player to the Computer

Connect the Lyra Digital Audio Player to your computer.

Turn on the unit, the Lyra Digital Audio Player will appear as a Removable Disk drive.



### Note

It might take several seconds for the device (the Lyra Digital Audio Player) to be detected, especially in Windows 2000/XP. Click Refresh in My Computer or Explorer to make sure the device has been detected.



# Transferring Music

EN



## Note

The Lyra Digital Audio Player is capable of transferring files at hi-speed mode of USB 2.0. This is up to 40 times faster than USB 1.1. If USB 2.0 port is available on your computer, use it to connect to your Lyra Digital Audio Player. The Lyra player is still backward compatible with the older USB 1.1 ports. However, you will not be able to take full advantage of the potential speed increase.

## Transferring Files to the Lyra Digital Audio Player

You can transfer files to your Lyra Digital Audio Player via MusicMatch Jukebox or via Windows Explorer.

If your Lyra Digital Audio Player isn't already connected to your computer, connect it to the computer using the provided USB cable as illustrated on the previous page.



## Attention

Do not disconnect the USB cable or remove the memory card during music download. Doing so may corrupt system files or the files being downloaded.



## Note

Secure music download files must be transferred to your Lyra player through Windows Media Player or the application recommended by the online music download service. Please visit the online music download service's website where you purchased your content from for more details on transferring secure music to your player.

For more information on Windows Media Player, visit <http://www.microsoft.com/windows/windowsmedia>.

# Transferring Music

EN



## Note

Some wma files may be DRM protected. You must acquire licenses for DRM protected wma files before they can be played on the Lyra player. For more information, go to [www.microsoft.com/windows/windowsmedia/drm](http://www.microsoft.com/windows/windowsmedia/drm)

3. Click on *Options* and select your portable device under *Select Device*. Click *OK*. Your device should be listed under *Portable Device*.
4. Select the playlist item and drag it to the active device listed under *Portable Device*. Only those playlists saved in step 1 are displayed on the playlist window. The songs in the playlist will now be automatically transferred to your Lyra Digital Audio Player.

## Transfer Files via MusicMatch Jukebox

1. Drag and drop desired tracks from the Music Library to the Playlist display and save the playlist.



## Note

Be sure to save the playlist or it will not be displayed on the playlist window of the Portable Device Manager screen.

During transfer a progress indicator appears in the *Portable Device Manager* screen, and "USB Transferring" flashes in the Lyra player's LCD.

2. From the menu area, select *Files/Send to Portable Device* or click *Send to Portable* under the *copy* item on the left side of the MusicMatch Jukebox screen to display the Portable Device Manager screen.

# Transferring Music

EN



## Attention

Make sure all data are transferred to the Lyra Digital Audio Player before unplugging the USB cable.



## Note

If you're running Windows 2000 you must stop the device before unplugging it. Click the icon (the *Unplug or Eject hardware* icon) from the system tray and select the USB Mass Storage device for the drive letter associated with the Lyra player, and select the device you want to stop. See the Windows Help for details about the Unplug or Eject Hardware topic.



## Note

You must profile your contents after file transfer in order for the new files to appear in the Navigation Menus. Refer to page 12 for profiling details.

## Transfer Files via Windows Explorer (Drag and Drop)

From Windows Explorer, highlight all the files/folders you want to transfer to your Lyra Digital Audio Player and drag them to the drive letter that is associated with it.

# Transferring Music

EN

## Disconnecting Your Lyra from the Computer



## Note


Before disconnecting the USB cable from the computer or the Lyra Digital Audio Player, be sure the "Safe to unplug" message is displayed.

From the System Tray, double click the left mouse button on the icon and select *Unplug or eject hardware*. The *Unplug or Eject Hardware* screen appears. Select the drive corresponding to your Lyra player.



The *Stop a Hardware device* screen appears. Select the device to be stopped again for confirmation and click **OK**.



You can also stop your Lyra player by right clicking on the  icon from the system tray and selecting the drive corresponding to your player.


# File Management

EN

## System Tray Applications

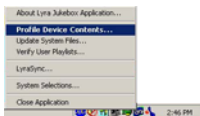
### Profile

New files that are transferred to your Lyra Digital Audio Player using Windows Explorer (drag and drop) will not appear in the Navigation Menus until you profile the contents. If MusicMatch Jukebox was used to transfer files, profiling may be done automatically.

1. Connect your Lyra Digital Audio Player to the computer using the provided USB cable if it is not already connected.
2. Right click on the Lyra icon  in the System tray (bottom right hand corner of the computer screen).



3. Select the *Profile Device Content...* item to start the profiling and sorting contents.



4. Click *Done* when profiling is complete.



### Attention

Make sure all data are transferred to the Lyra Digital Audio Player before unplugging the USB cable.

If you're running Windows 2000 you must stop the device before unplugging it. Click the icon (the *Unplug or Eject hardware* icon) from the system tray and select the USB Mass Storage device for the drive letter associated with the Lyra Digital Audio Player, and select the device you want to stop. See the Windows Help for details about the *Unplug or Eject Hardware* topic.

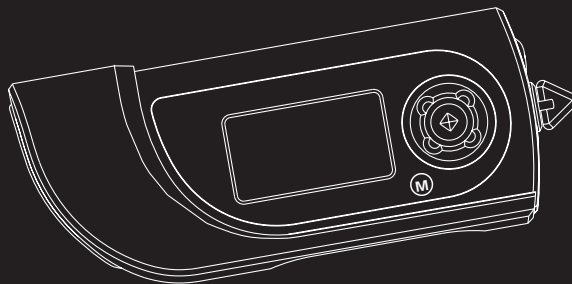
# Troubleshooting Tips

EN

Problem	Checkpoints / Action
After connecting the player to computer, "USB connected" does not appear on the display.	<ul style="list-style-type: none"> <li>• Press ON button to power on the player after connecting to the computer.</li> </ul>
Cannot access the player via Windows 2000 computer.	<ul style="list-style-type: none"> <li>• Install the Service Pack 3 for Windows 2000. Visit <a href="http://www.windowsupdate.microsoft.com">www.windowsupdate.microsoft.com</a> to check for the latest updates.</li> </ul>
Cannot playback tracks on the player.	<ul style="list-style-type: none"> <li>• Make sure audio tracks are encoded in the mp3 or Windows Media formats at supported bitrates. Bitrates support by the player: mp3 – 32 to 320 kbps wma – 48 to 192 kbps</li> <li>• WMA files may be DRM protected and you don't have the proper rights (license) to play the files.</li> </ul> <p>Check the website and/or application help system of the music download service provider from where the content was purchased from for license acquisition details.</p> <p>For more information on how license acquisition works, go to <a href="http://www.microsoft.com/windowsmedia/drm">www.microsoft.com/windowsmedia/drm</a></p>
What does the PlaysForSure logo mean?	<p>PlaysForSure is a new logo program from Microsoft®. Consumers can match the PlaysForSure logo on a large selection of devices and online music stores. If you see the logo, you'll know your digital media will play for sure.</p> <p>For more information on the Microsoft PlaysForSure program, visit <a href="http://www.PlaysForSure.com">www.PlaysForSure.com</a>.</p>

# THOMSON

u s e r  
m a n u a l



**THOMSON**  
46, quai Alphonse Le Gallo  
92648 Boulogne  
Cedex FRANCE  
[www.thomson.net](http://www.thomson.net)

56038450

**PDP2356K**  
**PDP2362K**

It is important to read this instruction book prior to using your new product for the first time.

# Safety Information

EN

**IMPORTANT NOTE:** To reduce the risk of fire or shock hazard, do not expose this player to rain or moisture.

## CAUTION

RISK OF ELECTRIC SHOCK  
DO NOT OPEN



This symbol indicates "dangerous voltage" inside the product that presents a risk of electric shock or personal injury.

## ATTENTION

RISQUE DE CHOC ELECTRIQUE  
NE PAS OUVRIR



This symbol indicates important instructions accompanying the product.

**TO REDUCE THE RISK OF ELECTRIC SHOCK, DO NOT REMOVE THE COVER (OR BACK). NO USER-SERVICEABLE PARTS ARE INSIDE. REFER SERVICING TO THE QUALIFIED SERVICE PERSONNEL.**

## Sound Pressure Control



Sound Pressure Control

Les articles de loi L44.5 et 44.6 du code de la santé publique, modifiés par l'article 2 de la loi du 28 Mai 1996 imposent une puissance acoustique maximale de 100 décibels. Le casque livré (code 55700930) et votre appareil respectent la législation en vigueur.

A pleine puissance, l'écoute prolongée du baladeur peut endommager l'oreille de l'utilisateur.

The descriptions and characteristics given in this document are given as a general indication and not as a guarantee. In order to provide the highest quality product possible, we reserve the right to make any improvement or modification without prior notice. The English version serves as the final reference on all products and operational details should any discrepancies arise in other languages.

# End User License Agreement

EN

**IMPORTANT-READ CAREFULLY:** This **End User License Agreement ("Agreement")** is a legal agreement between you and Thomson Inc. ("Thomson") for the Thomson Lyra device application/driver software program and associated documentation, if any ("Program").

## LICENSE

a) You are granted the license (i) to use the Program on a single workstation and (ii) to make one (1) copy of the Program into any machine-readable form for backup of the Program, provided the copy contains all of the original Program's proprietary notices.

b) You may transfer the Program and license, only as part of the Thomson Lyra device, to another party if the other party agrees to accept the terms and conditions of this Agreement. If you transfer the Program, you must at the same time either transfer all copies to the same party or destroy any copies not transferred.

## ACKNOWLEDGMENT

BY INSTALLING THE SOFTWARE OR CLICKING ON THE ACCEPTANCE BUTTON OF THE SOFTWARE, COPYING OR OTHERWISE USING THE PROGRAM, YOU ACKNOWLEDGE AND AGREE THAT YOU HAVE READ THIS AGREEMENT, UNDERSTAND IT, AND AGREE TO BE BOUND BY ITS TERMS AND CONDITIONS. IF YOU DO NOT AGREE TO THE TERMS OF THIS LICENSE AGREEMENT, CLICK ON THE REJECTION BUTTON AND/OR DO NOT INSTALL THE SOFTWARE AND/OR DO NOT USE THE PROGRAM.

# End User License Agreement

EN

## LICENSE RESTRICTIONS

- a) Except for the licenses expressly granted to you in this Agreement, no other licenses are implied.
- b) You may not (i) modify, translate, reverse engineer, decompile, disassemble (except to the extent that this restriction is expressly prohibited by law) or create derivative works based upon the Program or (ii) copy the Program, except as expressly permitted herein. You agree that you shall only use the Program in a manner that complies with all applicable laws in the jurisdictions in which you use the Program, including, but not limited to, applicable restrictions concerning copyright and other intellectual property rights.
- c) The Program may contain pre-release code that does not perform at the level of a final code release. In this case, the Program may not operate properly. Updated versions of the Program can be downloaded from [www.thomson-lyra.com](http://www.thomson-lyra.com).
- d) Thomson is not obligated to provide support services for the Program.

e) The Program is provided with "RESTRICTED RIGHTS". Use, duplication, or disclosure by the U.S. Government is subject to restrictions as set forth in subparagraph (c)(1)(ii) of DFARS 252.227-7013, or FAR 52.227-19, or in FAR 52.227-14 Alt. III, as applicable.

## TERM AND TERMINATION

- a) The license is effective on the date you accept this Agreement, and remains in effect until terminated by either party.
- b) You may terminate this license without any notice or delay, by destroying or permanently erasing the Program and all copies thereof.
- c) If you use, copy, modify, or transfer the Program, or any copy, in whole or part, except as expressly provided for in this license, your license is automatically terminated.
- d) When the license is terminated, you must destroy or permanently erase the Program and all copies thereof.

# End User License Agreement

EN

## WARRANTY DISCLAIMER

THE PROGRAM IS PROVIDED "AS IS" WITHOUT WARRANTY OF ANY KIND, EITHER EXPRESSED OR IMPLIED, INCLUDING, BUT NOT LIMITED TO THE IMPLIED WARRANTIES OF MERCHANTABILITY, FITNESS FOR A PARTICULAR PURPOSE, TITLE OR NON-INFRINGEMENT. THE ENTIRE RISK AS TO THE QUALITY AND PERFORMANCE OF THE PROGRAM IS WITH YOU. SHOULD THE PROGRAM PROVE DEFECTIVE, YOU (AND NOT THOMSON, ITS SUPPLIERS, ITS AFFILIATES OR ITS DEALERS) ASSUME THE ENTIRE COST FOR ALL NECESSARY REPAIR OR CORRECTION.

This exclusion of warranty may not be allowed under some applicable laws. As a result, the above exclusion may not apply to you, and you may have other rights depending on the law that applies to you.

## OWNERSHIP RIGHTS

All title and intellectual property rights in and to the Program and any copies thereof are owned by Thomson or its suppliers. All title and intellectual property rights in and to the content which may be accessed through use of the Program is the property of the respective content owner and may be protected by applicable copyright or other intellectual property laws and treaties. This license grants you no rights to use such content.

# End User License Agreement

EN

## LIMITATION OF LIABILITY

a) TO THE MAXIMUM EXTENT PERMITTED BY APPLICABLE LAW, IN NO EVENT SHALL THOMSON, ITS AFFILIATES, OR ITS DEALERS BE LIABLE FOR ANY SPECIAL, INCIDENTAL, INDIRECT OR CONSEQUENTIAL DAMAGES WHATSOEVER (INCLUDING, WITHOUT LIMITATION, DAMAGES FOR LOSS OF PROFITS, BUSINESS INTERRUPTION, CORRUPTION OF FILES, LOSS OF BUSINESS INFORMATION OR ANY OTHER PECUNIARY LOSS) REGARDLESS OF CAUSE OR FORM OF ACTION, INCLUDING CONTRACT, TORT OR NEGLIGENCE, ARISING OUT OF THE USE OF OR INABILITY TO USE THE PROGRAM, EVEN IF THOMSON HAS BEEN ADVISED OF THE POSSIBILITY OF SUCH DAMAGES. BECAUSE SOME STATES AND JURISDICTIONS DO NOT ALLOW THE EXCLUSION OR LIMITATION OF LIABILITY OF CONSEQUENTIAL OR INCIDENTAL DAMAGES, THE ABOVE LIMITATION MAY NOT APPLY TO YOU.

b) YOU ASSUME RESPONSIBILITY FOR THE SELECTION OF THE APPROPRIATE PROGRAM TO ACHIEVE YOUR INTENDED RESULTS, AND FOR THE INSTALLATION, USE, AND RESULTS OBTAINED.

## WINDOWS MEDIA

This version of the Lyra Personal Digital Player ("Lyra Player") contains software licensed from Microsoft that enables you to play Windows Media Audio (WMA) files ("WMA Software"). The WMA Software is licensed to you for use with the RCA/THOMSON Portable Audio Device digital music player under the following conditions. By installing and using this version of the Lyra Player, you are agreeing to these conditions. IF YOU DO NOT AGREE TO THE CONDITIONS OF THIS END USER LICENSE AGREEMENT, DO NOT INSTALL OR USE THIS VERSION OF THE Lyra Player.

# End User License Agreement

EN

The WMA Software is protected by copyright and other intellectual property laws. This protection also extends to documentation for the WMA Software, whether in written or electronic form.

**GRANT OF LICENSE.** The WMA Software is only licensed to you as follows: You may use this version of the Lyra Player containing the WMA Software only with the Portable Audio Device player.

You may not reverse engineer, decompile, or disassemble the WMA Software, except and only to the extent that such activity is expressly permitted by applicable law in spite of this limitation.

You may transfer your right to use this version of the Lyra Player only as part of a sale or transfer of your Portable Audio Device player, on the condition that the recipient agrees to the conditions in this End User License Agreement. If the version of the Lyra Player that you are transferring is an upgrade, you must also transfer all prior versions of the Lyra Player that you have which include the WMA Software.

MICROSOFT IS NOT PROVIDING ANY WARRANTY OF ANY KIND TO YOU FOR THE WMA SOFTWARE, AND MICROSOFT MAKES NO REPRESENTATION CONCERNING THE OPERABILITY OF THE WMA SOFTWARE.

The WMA Software is of U.S. origin. Any export of this version of the Lyra Player must comply with all applicable international and national laws, including the U.S. Export Administration Regulations, that apply to the WMA Software incorporated in the Lyra Player.

# End User License Agreement

EN

## THIRD PARTY SOFTWARE

ANY THIRD PARTY SOFTWARE THAT MAY BE PROVIDED WITH THE PROGRAM IS INCLUDED FOR USE AT YOUR OPTION. IF YOU CHOOSE TO USE SUCH THIRD PARTY SOFTWARE, THEN SUCH USE SHALL BE GOVERNED BY SUCH THIRD PARTY'S LICENSE AGREEMENT, AN ELECTRONIC COPY OF WHICH WILL BE INSTALLED IN THE APPROPRIATE FOLDER ON YOUR COMPUTER UPON INSTALLATION OF THE SOFTWARE. THOMSON IS NOT RESPONSIBLE FOR ANY THIRD PARTY'S SOFTWARE AND SHALL HAVE NO LIABILITY FOR YOUR USE OF THIRD PARTY SOFTWARE.

## GOVERNING LAW

This Agreement is governed by the laws of France, without regard to its conflict of laws.

# End User License Agreement

EN

## GENERAL TERMS

This Agreement can only be modified by a written agreement signed by you and Thomson, and changes from the terms and conditions of this Agreement made in any other manner will be of no effect. If any portion of this Agreement shall be held invalid, illegal, or unenforceable, the validity, legality, and enforceability of the remainder of the Agreement shall not in any way be affected or impaired thereby.

This Agreement is the complete and exclusive statement of the agreement between you and Thomson, which supersedes all proposals or prior agreements, oral or written, and all other communications between you and Thomson, relating to the subject matter of this Agreement.



# Table of Contents

EN

<b>Safety Information</b>	
<b>End User License Agreement</b>	
<b>Table of Contents</b>	<b>1</b>
<b>Before You Begin</b>	<b>2</b>
Unpacking Your Unit	2
What's so special about this mp3 player?	2
Computer System Requirements	2
Precautions for the unit	3
Caution	3
Caution While Driving	3
Important Battery Information	4
Please Respect the Environment!	4
Headset Safety	4
Inserting batteries into the player	5
Using Headphones	5
Connecting the Lyra Player to your Computer	6
<b>General Controls</b>	<b>7</b>

<b>mp3 Mode</b>	<b>8</b>
Display	8
mp3 playback	9
Play / Pause	9
Skipping Tracks	9
Scan Tracks	9
Adjusting the Volume	9

<b>Audible Mode</b>	<b>10</b>
Play / Pause	10
Skipping Section	10
Scanning	10
Adjusting the Volume	10

<b>Playback Function</b>	<b>11</b>
Shuffle / Repeat	11
DSP	11

<b>Other Functions</b>	<b>12</b>
Language	12
Memory Usage	12
Firmware Version	13
Restore to defaults	13

<b>More Information</b>	<b>18</b>
-------------------------	-----------

# Before You Begin

EN

**Dear Thomson Customer,**  
**Thank you for purchasing the Thomson Lyra™ Digital Audio Player.**  
**This product is compatible with most secure music downloads from WMA-compliant services that support DRM.**

## Unpacking Your Unit

When you unpack your new player, be sure you have removed all the accessories and information papers. The items below should have been packed in the box with your player.

- Lyra player
- Music Management CD
- USB cable
- Bud Phones
- Neck Strap

## What's so special about this mp3 player?

This player is meant to play mp3, audible and Windows Media™ audio files. To do so, you need the use of a Windows computer with USB port, connection cable (included) and a music management software (MusicMatch Jukebox).

## Computer System Requirements

- Pentium III 500MHz or higher recommended
- Macintosh iMac G3 or higher
- Windows @98SE, Me, 2000 (SP3 or higher), or XP
- Mac OS X Version 10.1.5 or higher
- Internet Explorer 4.0 or higher
- Internet access
- 100MB free hard disk space for the software
- 64MB RAM (128 MB recommended)
- CD-ROM drive capable of digital audio extraction
- USB port (2.0 recommended)
- Sound card

# Before You Begin

EN



## Warning:

Use of this product is for your personal use only. Unauthorized recording or duplication of copyrighted material may infringe upon the rights of third parties and may be contrary to copyright laws.

## Precautions for the Unit

- Do not use the unit immediately after transportation from a cold place to a warm place; condensation problem may result.
- Avoid shock to the unit especially during recording. Recorded data may be damaged.
- Do not store the unit near fire, places with high temperature or in direct sunlight.
- Do not operate or store unit in places with frequent static electricity or electrical noise (e.g. speaker, TV set).
- Clean the unit with a soft cloth or a damp chamois leather. Never use solvents.
- The unit must only be opened by qualified personnel.

## Caution

- Keep product out of direct sunlight. Exposure to direct sunlight or extreme heat (such as inside a parked car) may cause damage or malfunction.
- Do not expose to rain or moisture.

## Caution While Driving

Use of headphones while operating an automobile or moving vehicle is not recommended and is unlawful in some states and areas. Be careful and attentive on the road. Stop operation of the unit if you find it disruptive or distracting while driving.

## Important Battery Information

- When storing the unit, be sure to remove the batteries because they may leak and damage the unit.
- Batteries may leak electrolyte if inserted incorrectly, if disposed of in fire, or if an attempt is made to charge a battery not intended to be recharged.
- Never mix new batteries with old ones. Do not mix battery types.
- Discard leaky batteries immediately. Leaking batteries may cause skin burns or other personal injury.
- Do not charge batteries which are not intended to be recharged.
- Dispose of batteries, according to federal, state and local regulations.

# Before You Begin

EN

## Please Respect the Environment!



Before throwing any batteries away, consult your distributor who may be able to take them back for specific recycling.

## Headset Safety



Have a Blast- Just Not in Your Eardrums  
Make sure you turn down the volume on the unit before you put on headphones. Increase the volume to the desired level only after headphone are in place.

- Do not play your headset at a high volume. Hearing experts warn against extended high-volume play.
- If you experience a ringing in your ears, reduce volume or discontinue use.
- You should use extreme caution or temporarily discontinue use in potentially hazardous situations. Even if your headset is an open-air type designed to let you hear outside sounds, don't turn up the volume so high that you are unable to hear what is around you.

Your THOMSON product is designed and manufactured with high quality materials and components which can be recycled and reused.



This symbol means that electrical and electronic equipment, at their end-of-life, should be disposed of separately from your household waste.

Please, dispose of this equipment at your local community waste collection/recycling centre.

In the European Union there are separate collection systems for used electrical and electronic product.

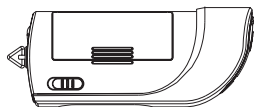
Please, help us to conserve the environment we live in!

# Before You Begin

EN

## Insert batteries into the player

1. Remove the battery door by applying thumb pressure, then lift the battery door out and off the cabinet.




2. Insert a "AAA" battery with polarities corresponding to the indications on the compartment. (Refer to "Before You Begin" for important battery information.)
3. Close the door of the battery compartment.



### Note

Refer to the power level indicator on display for battery level. Replace with new batteries when the indicator is empty. Refer to "Display Overview" on page 11.

## Using Headphones

Insert phone plug into the headphones jack (  ) on the back of player for listening.

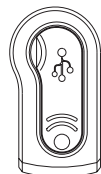
Have a Blast- Just Not in Your Eardrums. Make sure you turn down the volume on the unit before you put on headphones. Increase the volume to the desired level only after headphones are in place.

# Before You Begin

EN

## Connecting the Lyra Player to your Computer

1. Lift the rubber cover that is covering the USB socket on the player.
2. Insert the USB plug of the player into the USB socket on the computer tightly.

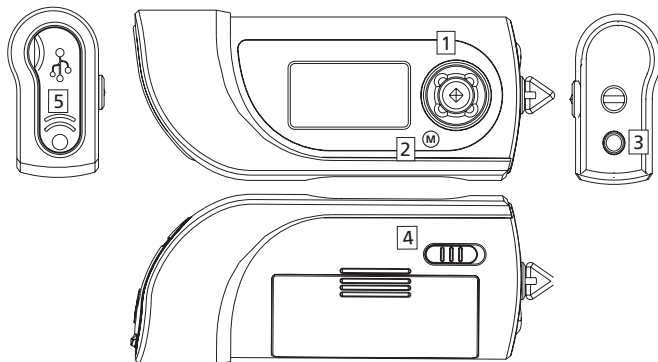


### Note

Refer to the Software Instruction manual for procedures in setting up USB drivers and transferring files to the player.

# General Controls

EN



**1.** Four directional joystick - Browse menu and change settings.


**LEFT/RIGHT** - In menu mode, press to go in / go out one level.  
In music mode - Press to skip to the previous/next song. Press and hold to scan backward/ forward.

**UP/DOWN** - In navigation mode, press to search up and down in the menu.  
In music playback mode - Increases / decreases the volume.

**SELECT** (joystick button) - When the power is off, press to power on the unit. When the power is on, press and hold to power off the unit.  
In setting mode, press to change the option

In music mode - Press to start or pause playback.

**2. M** - Press to enter / exit setting mode.

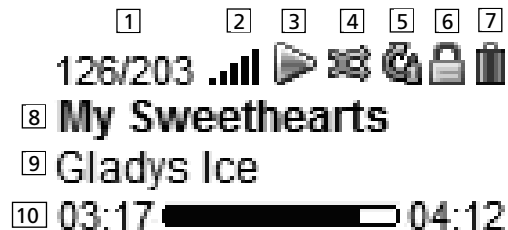
**3.** Headphones Jack (  ) - Insert the headphones here.

**4. HOLD** - Slide to lock / unlock the unit.

**5. USB port** (  ) - USB plug.

# mp3 mode

EN



## Display

1. Current / total file number.
2. Volume display.
3. The current playback situation.
4. Shuffle icon.
5. Repeat icon.
6. The lock icon is displayed when the key lock function is activated.
7. The battery indicator.

8. Song title.
9. Singer information.
10. The song elapse time is displayed during music playback.

# mp3 mode

EN

## mp3 playback

Press **SELECT** to turn on the unit, use **LEFT / RIGHT** to change the item to play.

### Play / Pause

- Once the item that you want to play is shown on the display, press **SELECT** to begin playback.
- Press **SELECT** once to pause playback, press again to resume playback.

### Skipping Tracks

- To skip to the next track, press and release **RIGHT**.
- To go to the previous track, press and release **LEFT**.

### Scan Tracks

- To scan forward the current track, press and hold **RIGHT**.
- To scan backward the current track, press and hold **LEFT**.

## Adjusting the Volume

- To turn up the volume, press **UP**. The volume level shows briefly to indicate the increase in volume level.
- To turn down the volume, press **DOWN**. The volume level shows briefly to show the decrease in volume level.

# Audible mode

EN

## Audible playback

Basically same as mp3 playback, please refer to the previous page for details.

### Play / Pause

- Once the item that you want to play is shown on the display, press **SELECT** to begin playback.
- Press **SELECT** once to pause playback, press again to resume playback.

### Scanning

- To scan forward, press and hold **RIGHT**.
- To scan backward, press and hold **LEFT**.

### Skipping Section

- To skip to the next section, press and release **RIGHT**.
- To go to the previous section, press and release **LEFT**.

## Adjusting the Volume

- To turn up the volume, press **UP**. The volume level shows briefly to indicate the increase in volume level.
- To turn down the volume, press **DOWN**. The volume level shows briefly to show the decrease in volume level.

# Playback functions

EN

## Shuffle / Repeat

- To select playmode, press **M** to bring up the setting menu.

Menu	
Shuffle	Off
Repeat	Off
DSP	Flat
Language	English
Memory usage	>
Version	>
Restore Defaults	>

- Select "Shuffle" or "Repeat" and press **SELECT** to change the options among:

Shuffle: Off / On  
Repeat: Off / One / All

## DSP

- To select the DSP setting, press **M** to bring up the setting menu.

Menu	
Shuffle	Off
Repeat	Off
DSP	Flat
Language	English
Memory usage	>
Version	>
Restore Defaults	>

- Select "DSP" and press **SELECT** to change the options among:

Flat / Bass / Pop / Rock / Jazz

# Other functions

EN

## Language

- To select language, press **M** to bring up the setting menu.

Menu	
Shuffle	Off
Repeat	Off
DSP	Flat
Language	English
Memory usage	>
Version	>
Restore Defaults	>

- Select "Language" and press **SELECT** to change the options among:

English / Francais / Deutsch / Español / Italiano

## Memory Usage

- To check memory usage, press **M** to bring up the setting menu.

Menu	
Shuffle	Off
Repeat	Off
DSP	Flat
Language	English
Memory usage	>
Version	>
Restore Defaults	>

- Select "Memory Usage" and press **RIGHT** to view the memory usage.

Memory Usage	
Free	102M
Total	122M

# Other functions

EN

## Firmware Version

- To check firmware version, press **M** to bring up the setting menu.

Menu	
Shuffle	Off
Repeat	Off
DSP	Flat
Language	English
Memory usage	>
<b>Version</b>	<b>&gt;</b>
Restore Defaults	>

- Select "Version" and press **RIGHT** to view the firmware version.

## Restore to Defaults

- To restore default settings, press **M** to bring up the setting menu.

Menu	
Shuffle	Off
Repeat	Off
DSP	Flat
Language	English
Memory usage	>
Version	>
<b>Restore Defaults</b>	<b>&gt;</b>

- Select "Restore Defaults" and press **RIGHT**, a warning screen will appear.

<b>Restore Defaults</b>
Are you sure?
<b>Yes</b>
No

- Press **SELECT** to confirm.

# More Information

EN

## Troubleshooting Tips

### The player does not turn on when the PLAY button is pressed?

- Batteries may be inserted incorrectly.
- Batteries may be empty.

### Skipping tracks or bad sound quality?

- Repeat, random or program function may be activated.
- There may be strong magnetic fields (e.g. too close to TV) near the unit.
- Low Battery level. Replace with new ones.

### Cannot perform playback?

- LOCK function may be activated.
- There may be no mp3 tracks in the card or internal memory.

### USB display does not appear when connected to computer?

- Check connection between your unit and the computer. ( Refer to the "USB Driver Installation; MusicMatch Jukebox™ Software" instruction manual)
- Check if the USB drivers are properly installed ( Refer to the "USB Driver Installation; MusicMatch Jukebox™ Software" instruction manual)

### The player does not respond to key operations?

- Turn the player off by removing the batteries. Reinsert the batteries properly and turn the player on again to resume normal operations.



#### Note:

For better result, we recommend a constant encoded bit rate from 32 to 320kbps for mp3 and 48kbps to 192kbps for Windows Media Audio. Nevertheless, your unit may play tracks encoded in variable bit rate (VBR).

# More Information

EN

## Cannot playback tracks on the player.

- Make sure audio tracks are encoded in the mp3 or Windows Media formats at supported bitrates. Bitrates support by the player: mp3 – 32 to 320 kbps  
wma – 48 to 192 kbps
- WMA files may be DRM protected and you don't have the proper rights (license) to play the files.
- Check the website and/or application help system of the music download service provider from where the content was purchased from for license acquisition details. For more information on how license acquisition works, go to [www.microsoft.com/windowsmedia/drm](http://www.microsoft.com/windowsmedia/drm).

## What does the PlaysForSure logo mean?

- PlaysForSure is a new logo program from Microsoft®. Consumers can match the PlaysForSure logo on a large selection of devices and online music stores. If you see the logo, you'll know your digital media will play for sure. For more information on the Microsoft PlaysForSure program, visit [www.PlaysForSure.com](http://www.PlaysForSure.com).



### Note:

Under some rare circumstances, your unit might report less memory than is available for storing music files. If this happens, format the device to recover all the memory.



### Note:

This unit may temporarily cease to function if subjected to electrostatic disturbance. To resume normal operation, it may be necessary to remove and reinstall the batteries. If the unit is connected to the computer via USB cable, disconnect and reconnect of the USB cable is required.



### Warning:

Formatting the device will erase all stored contents. Backup all the valuable files before doing so.

# More Information

EN



## HELPLINE THOMSON

Votre Contact THOMSON : 0 826 820 456  
(pour la France 0,15 € / mn)

Ihr Kontakt zu THOMSON: 0180 1000 390, ab 16.10.2000.  
(für Deutschland, Kosten zum Ortstarif)

You can contact THOMSON by dialling: 0871 712 1312  
(For Great-Britain, all calls will be charged 0,10£ / mn)

Para contactar con THOMSON marque: 901 900 410, a partir del 16.10.2000  
(las llamadas serán cargadas al precio de la tarifa local)

Il vostro contatto THOMSON: 8488 10 168, dal 16.10.2000  
(tariffa chiamata urbana)  
[www.thomson-europe.com](http://www.thomson-europe.com)



## Free Manuals Download Website

<http://myh66.com>

<http://usermanuals.us>

<http://www.somanuals.com>

<http://www.4manuals.cc>

<http://www.manual-lib.com>

<http://www.404manual.com>

<http://www.luxmanual.com>

<http://aubethermostatmanual.com>

Golf course search by state

<http://golfingnear.com>

Email search by domain

<http://emailbydomain.com>

Auto manuals search

<http://auto.somanuals.com>

TV manuals search

<http://tv.somanuals.com>