

THOMSON

**Lyra Micro
Jukebox
User's Guide**

PDP2810

Important Information

WARNING

To reduce the risk of fire or electric shock, do not expose this product or AC charger to rain or moisture.

CAUTION

RISK OF ELECTRIC SHOCK DO NOT OPEN

To reduce the risk of electric shock, do not remove cover (or back). No user serviceable parts inside. Refer servicing to qualified service personnel.



This symbol indicates "dangerous voltage" inside the product that presents a risk of electric shock or personal injury.



This symbol indicates important instructions accompanying the product.

To reduce risk of injury, charge only rechargeable batteries recommended by the manufacturer for this product. Other types of batteries may burst causing damage and personal injury.

Sound Pressure Control

Les articles de loi L44.5 et 44.6 du code de la santé publique, modifiés par l'article 2 de la loi du 28 Mai 1996 imposent une puissance acoustique maximale de 100 décibels. Le casque livré (code 55700910) et votre appareil respectent la législation en vigueur.

A pleine puissance, l'écoute prolongée du baladeur peut endommager l'oreille de l'utilisateur.

Service

This product should be serviced only by those specially trained in appropriate servicing techniques. For instructions on how to obtain service, refer to the warranty in this guide.

Important Information

Product Registration

Please fill out the product registration card and return it immediately. Returning this card allows us to contact you if needed.

Product Information

Keep your sales receipt for proof of purchase to obtain warranty parts and service and attach it here. Record the serial number and model numbers — both numbers are located on the product.

Model No. _____

Serial No. _____

Purchase Date _____

Place of purchase _____

Table of Contents

Important Information	i
Warning	ii
Important Information	iii
Before You Begin	6
Unpacking Your Unit	6
Things to consider before you get started	7
Computer System Requirements	7
Warning	7
Caution	7
Caution While Driving	7
Back up your data	8
Important Battery Information	8
Insert the Included CD-ROM into the CD-ROM Drive	9
Installing Software Components	10
Install the USB Driver & System Applications (Windows 98SE and Me Only)	10
Install System Applications (Windows 2000 or XP)	11
Install MusicMatch Jukebox	11
Install MusicMatch Plug-in	13
Launch the MusicMatch software	14
Install Additional Services	14
Connecting Lyra Micro Jukebox to the Computer	15
Transferring Files to Lyra Micro Jukebox	15
Transfer Files via MusicMatch Jukebox	16
Create Pre-defined Playlists and Transferring them to the Jukebox	17
Transfer Files via Windows Explorer (Drag and Drop)	17
Disconnecting Your Lyra from the Computer (Windows 2000 or XP)	18
System Tray Applications	19
Profile	19
Updating System File	20
Verify User Playlists	20
LyraSync	21
Overview of General Controls	23
Display Overview	24
Menu Navigation	25
Basic Operation	25
Playback Operation	26
User Playlist	27
Smart Tagging menu	27
Step-by-Step Example	28
Navigation Menu	30

Table of Contents

Additional Features	32
Program Play	32
User Playlist	33
Favourite List	34
Delete List	34
View Playlists	35
Pre-defined Playlists	36
All Files	36
Additional Menu	37
Settings	37
Shuffle	37
Repeat	38
Adjusting DSP Settings	40
Personalizing DSP output	41
Instant On	41
Audio Clips	42
System Settings	43
Profiler	44
Check for Updates	45
Portable Hard Drive Capability	45
Tips and Troubleshooting	46
FAQ (Frequently Asked Questions)	47
Specifications & System Requirements	47
Hardware	47
Hard Disc	48
Software	48
PC Hardware Requirements	49
Accessories	49
Miscellaneous Specifications	49

Before You Begin

Unpacking Your Unit

Your Lyra Micro Jukebox came with everything you need to make music portable — all of the items shown below should have been packed in the box with your Lyra Micro Jukebox.

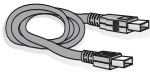


Lyra Micro Jukebox

Music Management CD

Contains the Lyra Micro Jukebox Applications & MusicMatch Jukebox software

AC/DC adapter charger



Mini USB cable

Plug the small end into your Lyra Micro Jukebox , and plug the other end into your computer's USB port. Go to page 24 for connection details.



Clip Phones



Armband carrying case

Illustrations contained within this publication are for representation only and subject to change.

Things to consider before you get started...

Computer System Requirements

- Pentium 233MHz or higher (Pentium II 300 MHz or higher recommended)
Macintosh iMac G3 or higher
- Windows® 98SE, Me, 2000, or XP
Mac OS X Version 10.1.5 or higher
- Internet Explorer 4.0 or higher
- Internet access
- 4 MB free hard disk space for the software plus 0.5 MB for every minute of CD quality music you store on your hard drive.
- 32MB RAM (64 MB recommended)
- CD-ROM drive capable of digital audio extraction
- USB port (2.0 recommended)
- Installed sound card
- 16-bit color video card

Warning

Use of this product is for your personal use only. Unauthorized recording or duplication of copyrighted material may infringe upon the rights of third parties and may be contrary to copyright laws.

Caution

- Keep product out of direct sunlight. Exposure to direct sunlight or extreme heat (such as inside a parked car) may cause damage or malfunction.
- Do not expose to rain or moisture.

Caution While Driving

Use of headphones while operating an automobile or moving vehicle is not recommended and is unlawful in some states and areas. Be careful and attentive on the road. Stop operation of the unit if you find it disruptive or distracting while driving.

Before You Begin

Back up your data

As with any device that has a hard drive or rotating magnetic media, you should back up the drive regularly. RCA and Thomson are not responsible for lost data.

Important Battery Information

- The battery used in this device may present a risk of fire or chemical burn if mis-treated. Do not separately recharge, disassemble, heat above 100C (212F), or incinerate.
- **Battery replacement should only be made by trained technicians.**
- Do not attempt to open the unit. No user servicable parts inside.
- To reduce risk of injury, charge only rechargeable batteries recommended by the manufacturer for this product. Other types of batteries may burst causing damage and personal injury.
- Keep the unit away from children. Do not disassemble or dispose product in fire.
- Use only the specified chargers which were packaged with the product. Use of another charger may present a risk of fire or explosion.
- Keep charger plugged in to device for at least 30 minutes before attempting to operate device if battery is completely run down and is insufficient to power up device.

Getting Started: Software Setup

The Music Management CD that came with your Lyra Micro Jukebox contains all of the necessary software components you need to make your Lyra Micro Jukebox work properly.

These components do the following:

- install USB driver for Windows 98SE/Me users (Refer to pg 10)
- enable you to transfer files from your computer to your Lyra Micro Jukebox
- profile, format and sort the contents, update the system files (Refer to pg 19)
- use the MusicMatch Jukebox software to organize your music collection and transfer the music to your Lyra Micro Jukebox

The MusicMatch Jukebox™ software compresses audio files (from music CDs) to the mp3, mp3PRO or WMA format so you can play them on your Lyra Micro Jukebox. The MusicMatch software also enables you to download files from the internet that are already compressed and then transfer those files to your Lyra Micro Jukebox (or play the music on your computer).

Insert the Included CD-ROM into CD-ROM Drive

Note: Do not connect your Lyra Micro Jukebox to your computer before you have installed the required drivers. (Windows 98SE/Me only)

1. Turn on your computer and place the Music Management CD that came with your Lyra Micro Jukebox into your computer.

IMPORTANT: Don't connect the USB cable to the PC or Lyra Micro Jukebox before or during the driver installation.

If you're running Windows 2000 no additional drivers are required.

*If you're running Windows 98SE/Me, you **must** install the USB drivers from the CD-ROM in order for the Lyra Micro Jukebox to function properly.*

2. If the setup screen does not appear, double click *My Computer*, double click your CD-ROM drive icon, and double click *Install* to run the installer.

Getting Started: Software Setup



3. Select your Lyra model ([PDP2810](#) (Lyra Micro Jukebox)) on the startup screen and click *Install* to access installation programs corresponding to your Lyra device.



4. Click on the software component you want to install. See next Section for details.

Installing Software Components

Install the USB Driver and System Applications (Windows 98SE and Me Only)

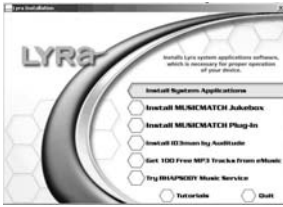
For Windows 98SE and Me systems, you need to install a USB driver before your computer can recognize your Lyra Micro Jukebox.



1. Click *Install USB Driver/System Applications* to install the required driver for your Lyra Micro Jukebox.
2. Follow the on-screen instructions to install all necessary files.
3. Click *Finish* to complete installation and return to the startup screen.

Note: A restart of your system may be required after installation is completed.

Install System Applications (Windows 2000 or XP)



1. Click *Install System Application* to install applications that will help you better manage your Lyra Micro Jukebox.
2. Follow the on-screen instructions to install all necessary files.
3. Click *Finish* to complete installation and return to the startup screen.

(Refer to page 19 for further system application details)

Install MusicMatch Jukebox

MusicMatch Jukebox is a music management software used to organize and manage digital audio files and can be used to transfer the music to your Lyra Micro Jukebox.



1. Click *Install MusicMatch Jukebox* to run the MusicMatch setup program.

Wait while the installation program begins. It may take up to 20 seconds for the installer to start.

Note: It is recommended to uninstall any previous installations of the MusicMatch Jukebox software before proceeding. After the uninstall process has been completed, delete the C:\Program Files\MusicMatch folder from Windows and where C:\Program Files is the path where the software was installed.

If you do not wish to uninstall the previous MusicMatch Jukebox software, go to "Install MusicMatch Plug-in" on page 13.

Getting Started: Software Setup

2. The *Welcome* Screen appears, click *Next* to continue and show the License Agreement.



3. After you've read the license agreement, click *Yes* to accept (to continue, you must click *Yes*), or *No* to decline. If you click *Yes*, the *User Registration Information* screen appears.

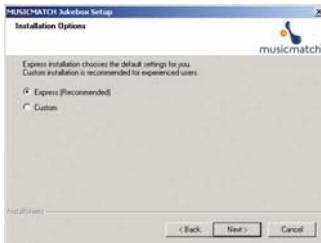


4. Enter your name, e-mail address, postal code, country, year of birth and sex (male or female). Click *Next* to continue.

Note: You must enter an e-mail address to proceed. If you do not have an e-mail address, enter yourname@home.com.

5. The *Personalize Music Recommendation* screen appears. Read the screen to determine if you want to use this feature or not. You can change the settings later. Select *Yes* or *No* and click *Next* to continue.

6. The *Installation Options* screen appears. Select *Express Setup* and click *Next* to continue. The Installation begins.



Getting Started: Software Setup



7. After installation is complete, click Finish.
8. If necessary, close the main setup screen.
9. Some computers might require you to restart your computer. If this is necessary, a dialog box will appear on the computer screen.

Note: As with any device that has a hard drive, you must back up the drive. RCA and Thomson are not responsible for lost data.



For more information on MusicMatch Jukebox, click *Tutorials* on the CD or go to www.musicmatch.com.

Install MusicMatch Plug-in

MusicMatch requires a plug-in for your particular device in order to download audio files using MusicMatch Jukebox and transfer the files from your computer to your Lyra Micro Jukebox.



1. Click *Install MusicMatch Plug-in*.
2. Follow the on-screen instructions to install all necessary files.
3. Click *Finish* to complete installation and return to startup screen. After the plug-in has been installed, launch the MusicMatch Jukebox software.

Note: if the MusicMatch Jukebox Software is already running, you may need to restart it in order for the newly installed Lyra plug-in to be properly recognized.

Getting Started: Software Setup

Launch the MusicMatch software



The MusicMatch icon found in your computer's system tray.



The MusicMatch software converts audio files to the mp3, mp3PRO and WMA format so you can play them on your Lyra Jukebox.

1. Remove the Music Management CD from your computer.
2. Start the MusicMatch Jukebox software (click on the MusicMatch icon in your system tray or on your desktop).
3. The first time you launch MusicMatch, a *Getting Started* screen appears providing information about MusicMatch and the software.
4. Detailed information, Getting Started tips, and troubleshooting are available through the Help menu and the MusicMatch internet site (accessed from the Help and Site menus). We recommend you familiarize yourself with the MusicMatch Welcome Tips and view the On-line FAQs before using and recording files.

Note: Logging onto the internet while using MusicMatch Jukebox takes advantage of all its features.

Install Additional Services

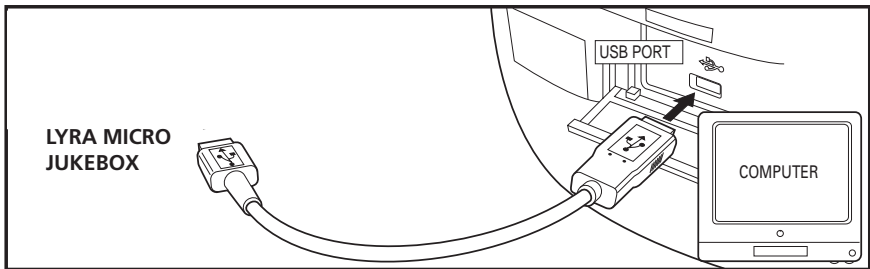
Click on *Install ID3man by Auditude*, *Get 100 Free mp3 Tracks from eMusic* or *Try Rhapsody Music services* for additional digital music services provided by our partners.

Connecting Lyra Micro Jukebox to the Computer

Connect the Lyra Micro Jukebox to your computer with the mini USB cable provided. Battery charging will commence as soon as the screen below appears. Turn on the unit by pressing the **ON/PLAY** button. The Lyra Micro Jukebox will appear as a Removal Disk drive letter.

Note: It might take several seconds for the device (the Lyra Micro Jukebox) to be detected, especially in Windows 2000/XP. Click Refresh in My Computer or Explorer to make sure the device has been detected.

Note: The Lyra Micro Jukebox is capable of transferring files at hi-speed mode of USB 2.0. This is up to 40 times faster than USB 1.1. If USB 2.0 port is available on your computer, use it to connect to your Lyra Micro Jukebox. The Lyra Jukebox is still backward compatible with the older USB 1.1 ports. However, you will not be able to take full advantage of the potential speed increase.



Transferring Files to Lyra Micro Jukebox

You can transfer files to your Lyra Micro Jukebox via MusicMatch Jukebox or via Windows Explorer.

If your Lyra Jukebox isn't already connected to your computer, connect the Lyra Jukebox to the computer using the provided USB cable as illustrated above.

Note: Do not disconnect the USB cable during music download. Doing so may corrupt system files or the files being downloaded.

Getting Started: Software Setup

Transfer Files via MusicMatch Jukebox

1. Drag and drop desired tracks from the *Music Library* to the *Playlist* display.
2. From the menu area, select *Files/Send to Portable Device* to display the *Portable Device Manager* screen. Under the *Attached Portable Devices* item, select *Lyra Micro Audio Player*.
3. Select the *playlist* item and drag it to the *Lyra Personal Audio Player*. The songs in the playlist will now be automatically transferred to your Lyra Micro Jukebox.




Note: If your Lyra Micro Jukebox doesn't appear in the Portable Device Manager area, click the REFRESH button.

USB
Connected To PC
To Play Audio, Hold
Down PLAY Key  !



When the transfer is finished, the *Lyra Micro Jukebox Profiler* application automatically runs so it can sort/profile the newly transferred files.

Caution: Make sure all data are transferred to the Lyra Micro Jukebox before unplugging the USB cable.

If you're running Windows 2000 you must stop the device before unplugging it. Click the  icon (the Unplug or Eject hardware icon) from the system tray and select the USB Mass Storage device for the drive letter associated with the Lyra Micro Jukebox, and click STOP. See the Windows Help for details about the Unplug or Eject Hardware topic.

Transfer Files via Windows Explorer (Drag and Drop)

If your Lyra Micro Jukebox isn't already connected to your computer, connect the Lyra Micro Jukebox to the computer using the provided USB cable.



From Windows Explorer, highlight all the files/folders you want to transfer to your Lyra Micro Jukebox and drag them to the drive letter that is associated with it.

Create Pre-defined Playlists and Transferring them to the Jukebox

Pre-defined playlists are created on your PC using MusicMatch Jukebox. Refer to the MusicMatch Jukebox User Manual for details. Use Windows Explorer to transfer pre-defined playlists to your Lyra Micro Jukebox.

If your Lyra Micro Jukebox isn't already connected to your computer, connect it using the provided USB cable.




From Windows Explorer, highlight the pre-defined playlists that you have created in MusicMatch Jukebox and drag them to the *lyra_playlists* directory in the drive letter associated with your Lyra Micro Jukebox.


Note: Only M3U playlists files stored in the *Lyra_playlists* folder will be recognized by the device. Re-profile the contents of the device after transferring playlists files.

Disconnecting Your Lyra from the Computer (Windows 2000 or XP)



From the System Tray, left click on the  icon and select *Unplug or eject hardware*. The *Unplug or Eject Hardware* screen appears. Select the drive corresponding to your Lyra Micro player and click *Stop*.

The *Stop a Hardware device* screen appears. Select the device to be stopped again for confirmation and click *OK*.

You can also stop your Lyra Micro Jukebox by right clicking on the  icon from the system tray and selecting the drive corresponding to your player.

System Tray Applications

Profile

New files that are transferred to your Lyra Micro Jukebox using Windows Explore (drag and drop) will not appear in the Navigation Menus until you profile the contents. If MusicMatch Jukebox was used to transfer files, profiling will be done automatically.

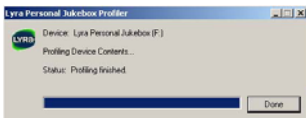
1. Connect your Lyra Micro Jukebox to the computer using the provided USB cable if it is not already connected.



2. Right click on the Lyra icon  in the System tray (bottom right hand corner of the computer screen).
3. Select the *Profile Device Content...* item to start the profiling and sorting contents.



4. Click *Done* when profiling is complete.




Getting Started: Software Setup

Updating System File

You can upgrade your Lyra Micro Jukebox or repair system files on your device if it becomes damaged by downloading the latest firmware from <http://www.thomson-lyra.com>. After you have downloaded the latest firmware, follow the steps below to update your system files.

1. Connect your Lyra Micro Jukebox to the computer using the provided USB cable if it is not already connected.



2. Right click on the Lyra icon  in the System tray (bottom right hand corner of the computer screen) and select the *Update System File...* item to start updating your system with the latest firmware.

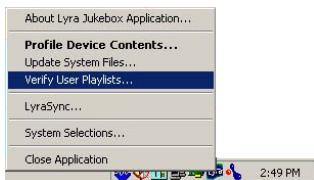
Possible cause of system file damage:


- System files and/or folders were accidentally deleted from the device,
- you have formatted your Jukebox.

Verify User Playlists

Verify items in the User Playlists under the `lyra_playlist` system folder exists on the Lyra Micro Jukebox.

1. Connect your Lyra Micro Jukebox to the computer using the provided USB cable if it is not already connected.

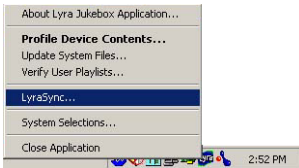



2. Right click on the Lyra icon  in the System tray (bottom right hand corner of the computer screen) and select the *Verify User Playlists...* item.

LyraSync

Files and folders can be synchronized between your PC and your Lyra Micro Jukebox.

1. Connect your Lyra Micro Jukebox to the computer using the provided USB cable if it is not already connected.

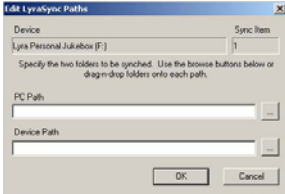


2. Right click on the Lyra icon  in the System tray (bottom right hand corner of the computer screen) and select *LyraSync*.



3. The *LyraSync Options* screen appears.

Getting Started: Software Setup

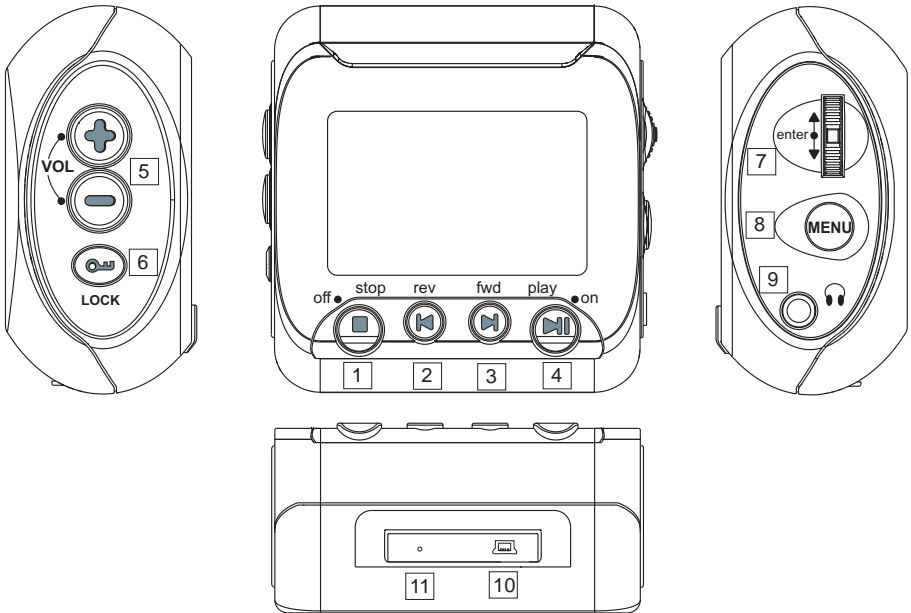


4. Click *Insert* to select the paths of files and folders to synchronize between your PC and the Device. Click *OK*.

5. Select the desired LyraSync direction.
 - PC overwrites Device
 - Device overwrites PC
 - Synchronize PC and Device

6. Click *Synchronize* to start.

Overview of General Controls



1. **STOP** - Stop playback / press and hold to turn unit off .
2. **Skip backward**- Skip back to last track. Press and hold to search backward within the same track.
3. **Skip forward** - Skip to next track. Press and hold to search forward within the same tracks.
4. **PLAY/PAUSE** - Press and hold to turn the unit on; in stop mode, press to start playback and pause during playback.
5. **VOLUME** - Adjust sound volume.
6. **LOCK** - press and hold to activate / deactivate key lock function.
7. **ENTER/SCROLL KNOB** - Scroll up and down to navigate the menu, press to select the highlighted item.
8. **MENU** - Bring up the main menu, each subsequent press will move up one level on the menu.
9. **PHONES** - headphones jack.
10. **USB port** - Attach the small end (Type mini-B) of the mini-USB cable here. Attach the large end (Type A) to your computer. The Lyra Micro Jukebox will also get power from the USB port when connected.
11. **RESET SWITCH** - Resets player and forces all settings to default values.

Display Overview



1. Song title.
2. The lock icon is displayed when the key lock function is activated. This can be activated by pressing and holding the **Lock** button until the lock icon is displayed. To unlock, press and hold again until the lock icon is turned off.
3. The battery indicator shows battery level.
 - Battery full
 - Battery empty
4. The shuffle icon is displayed when random playback is selected.
 - 🎲 - indicates shuffle all songs in the folder.
 - 🎲🔄 - indicates shuffle all songs in the current play mode repeatedly.
 - 🎲 ALL - indicates shuffle all songs in all the folders.
 - 🎲(All) - indicates shuffle all songs in all the folders repeatedly.
5. The repeat icon is displayed when the repeat feature is activated.
 - 🔄 - indicates repeat all songs in the current folder.
 - 🔄(1) - indicates repeat one song.
 - 🔄(All) - indicates repeat all songs in the current play mode.
6. EQ setting.
7. Elapsed time of the currently played item.
8. The current position you are at among all other items in the current menu level.
9. Year.
10. Genre.
11. Encoded bitrate.

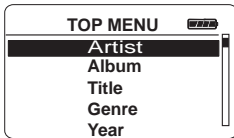
Basic Operation

The information in this section presumes you've successfully transferred files to your Lyra Jukebox, and you're ready to play some music.

If you need specific set-up information (downloading music, transferring files, installing software), go to page 15.

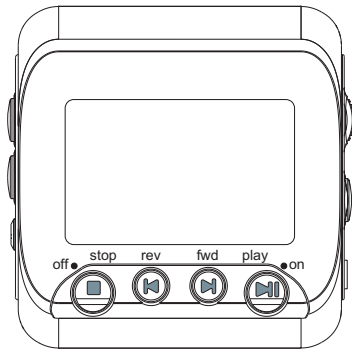
If you want more detailed information about the Lyra Jukebox's features, go to page 32.

Understanding how to navigate through the Lyra Jukebox's menu system, combine with how the buttons operate, will give you information you need for basic functionality.



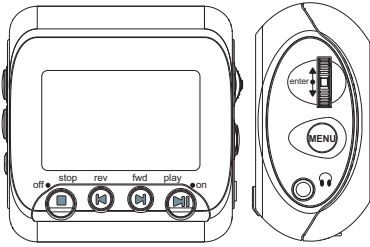
Top Menu is the main menu. The navigation scheme is the same no matter how many menus you access.

Menu Navigation



1. Scroll the **ENTER** button up or down to highlight the desired items on the screen.
2. To enter and view the submenu, press the **Enter** button.
3. To go back to the previous menu level, press the **MENU** button.
4. To return to the Top menu quickly at any given time, press and hold the **MENU** button.

Playback Operation



- Once the item that you want to play is on the screen, press **Play/Pause** (⏮) to begin playback. This item can be an artist, an album, a playlist, or a song. Press again to pause playback. The unit will automatically power off after remaining in pause mode for more than the Power Save interval (Length of this Power Save interval can be modified in the *Setting* menu).
- To scan backwards in the track that's playing, press and hold the **Previous** (⏮) button.
- To scan forward in the track that is playing, press and hold the **Next** (⏭) button.
- To go to the next track, press and release the **Next** (⏭) button.
- To go to the previous track, press and release the **Previous** (⏮) button.
- To stop playback, press the **Stop** (⏹) button. The display returns to the previous menu level.
- To turn up the volume, press the **VOLUME +** button on the side of the unit. The volume display bar updates to show the increase in volume level.
- To turn down the volume, press the **VOLUME -** button on the side of the unit. The volume display bar updates to show the decrease in volume level.
- To add an item to the *Playlist*, press **ENTER** to tag it (only in navigation mode), songs saved in this list can be played and viewed through the *Playlist* menu. • If you want to add the entire album, press and hold the **ENTER** button to bring up the Smart Tagging Menu, scroll the **ENTER** button to highlight "Tag Entire folder", then press the **ENTER** button again to confirm.
- To add song to the *Favourite List*, press and hold the **ENTER** button to bring up the Smart Tagging Menu, scroll the **ENTER** button to highlight "Tag Entire folder", then press the **ENTER** button again to confirm.
- For navigation while playing music, press the **MENU** button to return to the last menu you were at.

Smart Tagging menu

- If you want to add the entire album, press and hold the **ENTER** button to bring up the Smart Tagging Menu, scroll the **ENTER** button to highlight “Tag group”, then press the **ENTER** button again to confirm.
- To add song to the *Favourite List*, press and hold the **ENTER** button to bring up the Smart Tagging Menu, scroll the **ENTER** button to highlight “Save to Favourites list”, then press the **ENTER** button again to confirm.
- Song information screen appears automatically during playback.
- For navigation while playing music, press the **MENU** button to return to the last menu you were at.
- To clear all of the tagged items, press and hold the **ENTER** button to bring up the Smart Tagging Menu, scroll the **ENTER** button to highlight “Clear Tags”, then press the **ENTER** button again to confirm.

User Playlist *

You can create more than one playlist, and you can even name the playlist at your wish.

- To save all of the tagged items into your playlist, press and hold the **ENTER** button to bring up the Smart Tagging Menu, scroll the **ENTER** button to highlight “Save to User Playlist”:

You can choose to save the songs into playlist which is already created (“Append to”), and all existing playlist will be shown, select one and press the **ENTER** button again to confirm.

Or you can save the songs into a new playlist, highlight “Save NEW”, you can choose to save to a default playlist name (“Default name”), or input a playlist name yourself. After choosing a playlist name, press the **ENTER** button again to confirm.

* Please check www.thomson-lyra.com for updates on this feature.


Step-by-Step Example

The following example illustrates (with more detail than the previous information) how you find the song you want to play.

1. These instructions presume you've already done the following:
 - Installed the MusicMatch Jukebox software and the Lyra mp3/Micro Jukebox profiler application (go to page 9 for detailed instructions).
 - Transferred music from your computer to the Lyra Personal Jukebox (page 15 has detailed instructions) and profiled the contents of the Lyra Jukebox through MusicMatch Jukebox or the Profiler software.

Note: *The music you're transferring could be from a CD you put in your computer, the internet, or music you already had loaded onto your computer.*

2. If you haven't already unplugged the Lyra Micro Jukebox from your computer, disconnect the USB cable from the Lyra Micro Jukebox.

Note: *You must stop the device before unplugging it. Click the  icon (the Unplug or Eject hardware icon) from the system tray and select the USB Mass Storage device for the drive letter associated with the Lyra Jukebox, and click STOP. See the Windows Help for details about the Unplug or Eject Hardware topic.*

3. If you've fully charged the battery (the Lyra Micro Jukebox needs to be plugged in for about 3 hours before the battery is fully charged), disconnect the AC adapter from the outlet and then from your Lyra Micro Jukebox.

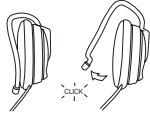
Note: *If the battery isn't fully charged, keep the Lyra Micro Jukebox plugged in while you listen to the music you've transferred from your computer.*

4. Connect the clip phones to your Lyra Micro Jukebox (insert the end of the clip phones connector into the phones jack on the side of the Lyra).

How to Use Your Clip Phones (The e.clipz)



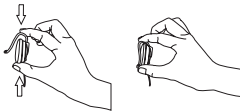
The right ear clip phone is labeled R while the left ear clip phone is labeled L.



- a. Pull the ear hook away from the ear pad slightly. You will hear a click sound.



- b. Slide the ear hook behind the ear with the ear pad on the front of the ear. Rotate the clip phone so the ear pad fits closely with the ear.



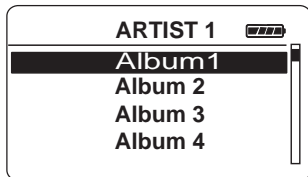
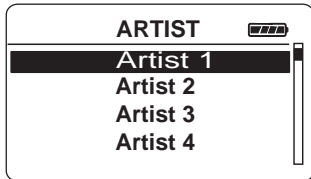
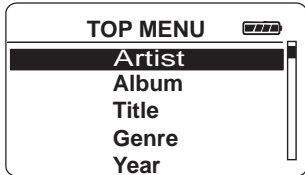
- c. Lock the clip phone in place by pushing down on the top of the ear hook until it locks.



- d. For best sound quality, make sure the earpad fits closely with your ear.

Navigation Menu

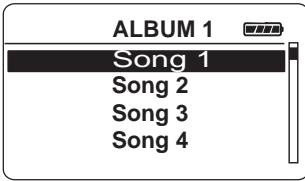
The following example illustrates steps to select and play songs in the *Artist/Album* category.




1. Highlight *Artist/Album* (press the **ENTER** button).
2. Press the **Enter** button (the *Artist* menu appears with the artists stored on your Lyra Jukebox listed in alphabetical order).
 - To scroll up and down the *Artist* menu, slide the **Scroll** button.
 - To return to the main *Menu*, press the **Menu** button.
3. To see the albums for the artist highlighted, press the **Enter** button (the album titles for that artist appear in alphabetical order).
 - To scroll up and down the *Artist* menu, slide the **Scroll** button.
 - To return to the previous menu (*Artist*), press the **Menu** button.
4. To see the songs on the album you've highlighted, press the **Enter** button (the songs for that album appear).
 - To scroll up and down the *Album* menu, slide the **Scroll** button.
 - To return to the previous menu (*Artist 1*), press the **Menu** button.

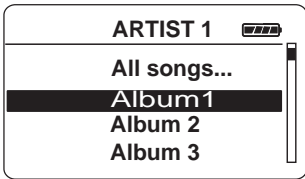
Note: To return to the main *Menu* at any stage of navigation, press and hold the **Menu** button.

Note: To see all songs by *ARTIST 1*, highlight "ALL SONGS" and press the **Enter** button.

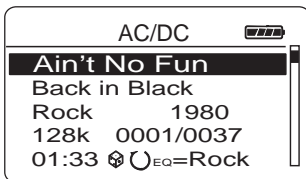


Highlight the desired song.

- To play the song, press the **Play/Pause**  button.



- To go to the previous menu, press the **MENU** button.



- The song information (Artist name, Album name, Title, Genre & Year) will show on the display during playback.

- To end playback, press the **Stop** button.

Note: The information provided in the INFO screen depends upon the ID3 tags that have been set up for the song. You may use the ID3 tag editing feature in MusicMatch Jukebox to fix or correct the ID3 tags.

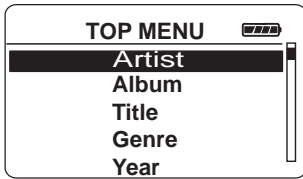
Additional Features

Lyra Micro Jukebox has five System Playlist selections: *Program play*, *Favourites list* and *User playlist*.

Note: Visit <http://ww.thomson-lyra.com> for updates on these features.

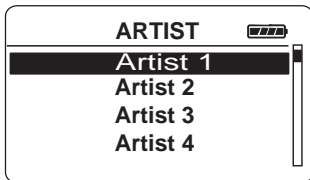
Program Play

You can play all the tagged items in the sequence of tagging.



1. In navigation mode, move the cursor to highlight the item to be selected.

- To scroll up and down the display, scroll the **ENTER** button.



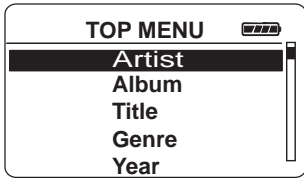
2.
 - To enter the highlighted folder, press the **Enter** button.

- To select the highlighted item, press and hold the **Enter** button to bring up smart tagging menu and select "Tag group".

- After selecting all the items your want, press and hold the ENTER Button to bring up the SmartTagging menu, select "Program Play", then you can enjoy the music in the sequence of selection.

User Playlist *

You can create a *User Playlist* using the Lyra Micro Jukebox.



1. In navigation mode, move the cursor to highlight the item to be selected.
 - To scroll up and down the display, scroll the **ENTER** button.
 - To enter the highlighted folder, press the **Enter** button.
 - If you want to add the entire album, press and hold the **ENTER** button to bring up the Smart Tagging Menu, scroll the **ENTER** button to highlight "Tag Entire folder", then press the **ENTER** button again to confirm.
 - To add song to the *User Playlist*, press and hold the **ENTER** button to bring up the Smart Tagging Menu, scroll the **ENTER** button to highlight "Save to User Playlist", then press the **ENTER** button again to confirm.
 - Scroll the **ENTER** button to select whether to save to a new playlist ("Save NEW") or to save into an existing playlist ("Append to").
 - To return to the *TOP MENU*, press and hold the **MENU** button.
2. To de-select a selected item, scroll the **ENTER** button to highlight the selected item and press **ENTER**.

Refer to "View System Playlist" on page 35 to view items in the User playlist.

Favourite List

During playback, you can select and place songs you like into the *Favourite* playlist.

1. • To add song to the *Favourite List*, press and hold the **ENTER** button to bring up the Smart Tagging Menu, scroll the **ENTER** button to highlight “Save to User Playlist”, then press the **ENTER** button again to confirm.
2. To de-select a song from the *Favourite* list, untag the song within Smart Tagging menu.

View Playlists



1. Scroll the **ENTER** button to highlight *Playlists* on the *TOP MENU* screen.
2. Press the **ENTER** button to show all the predefined system playlists.
3. Scroll the **ENTER** button to select the desired playlist to be viewed.
4. Press the **ENTER** button to view tagged items in the selected playlist.

Note: *All items added will be shown as individual songs.*

Lyra Micro jukebox

Pre-defined Playlists

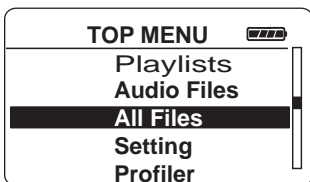
Pre-defined playlists are those playlists created on the PC and transferred to the Lyra Micro Jukebox. Refer to page 14 for details on creating Pre-defined Playlists and transferring them to your Lyra Micro Jukebox.

Follow the steps under “View Playlists” to enter the *Playlists* menu.

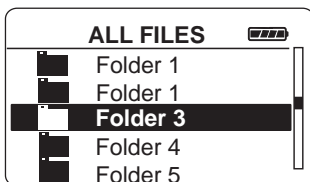
Playlists shown under the dividing line are the pre-defined playlists

All Files *

Your Lyra Micro Jukebox is a USB mass storage device that can be used to store any files. To see all of the files that are stored on your Lyra Micro Jukebox:



1. Scroll the **ENTER** button to highlight *All Files* on the *TOP MENU* screen.



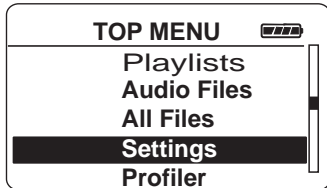
2. Press the **Enter** button (the *All Files* menu appears). Folders are listed first and individual files are listed next.

 - indicates the item is a folder.

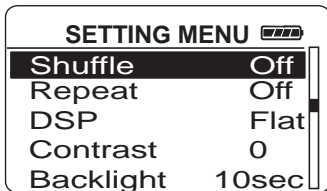
Note: *The folders and files are sorted in the order they were transferred to the Lyra Jukebox (the folder you transferred most recently appears last in the list of folders and the file you transferred most recently would be the last on the list since file names follow folder names).*

Additional Menu

Settings



1. Scroll the **ENTER** button to highlight *Settings* on the *TOP MENU* screen.

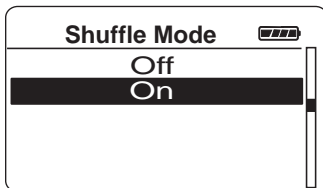


2. Press the **Enter** button to view the *Settings* Menu.


Shuffle

When Shuffle is On, songs are played in random order.

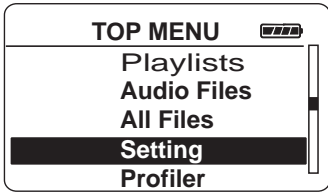
If shuffle is activated, the songs in the folder where playback begins are played randomly. After all the songs have been played, the unit will randomly select another folder and shuffle all the songs in the newly selected folder.



1. Scroll the **ENTER** button to highlight *Shuffle* on the *Settings* screen.
2. Press the **ENTER** button repeatedly to toggle between Shuffle on and off.

The Shuffle  icon will show on the display.

Lyra Micro jukebox

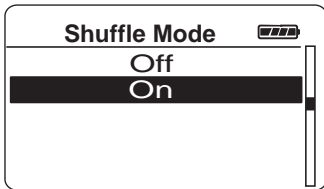


3. Press the **MENU** button to return to the main menu.

4. Scroll the **ENTER** button to select the folder where you want Shuffle playback to begin.

Press **Play/Pause** (⏮) to begin playback.

All songs/folders in the folder where playback begins will be played randomly.






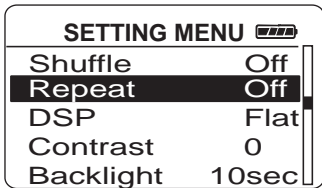
5. To de-select the Shuffle option, repeat steps 1 and 2 to select *Shuffle Off*.

Note: Files in the Favourite playlist have a higher probability of being played.

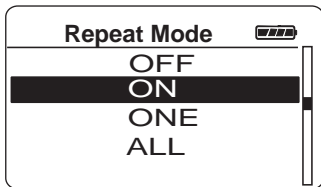
Repeat

Three repeat options are available on the Lyra Micro Jukebox.

- *Repeat Off* - No repeat option selected.
- *Repeat On* - Plays songs in the current group/folder repeatedly. The repeat icon  will show on the display.
- *Repeat One* - Plays the current song repeatedly. The repeat one icon  will show on the display.
- *Repeat All* - Plays all songs in the current play mode repeatedly. The repeat all icon  will show on the display.

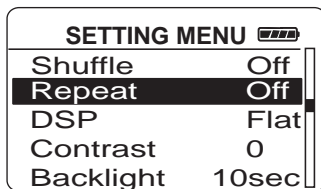



1. Scroll the **ENTER** button to highlight *Repeat* on the *Settings* screen.



2. Scroll the **ENTER** button to adjust the setting and press again to confirm.

The corresponding repeat icon appears on the display.



3. Press the **MENU** button to return to the main menu.
4. Select the item you wish to play and press the **Play/Pause**  button.

If repeat All is activated, all the songs on the Jukebox will be repeated

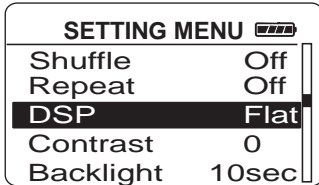
If repeat One is activated, the selected song where playback begins will be repeated.

5. To de-select the repeat option, repeat steps 1 and 2 and select *Repeat Off*.

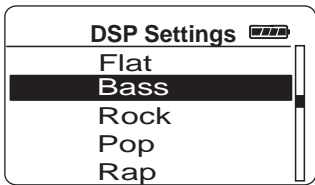
Lyra Micro jukebox

Adjusting DSP Settings

DSP Settings (Digital Signal Processor settings) adjust the various levels of the audio output for different types of songs. For example, the DSP setting for BASS makes the bass sounds more prominent. You can also personalize the levels via the *EQ* menu item. The default DSP setting for your Lyra Micro Jukebox is *FLAT*.



1. Scroll the **ENTER** button to highlight *DSP* on the *Settings* screen.

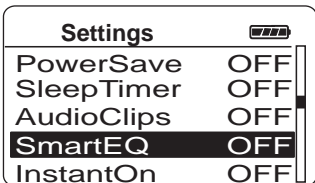


2. Press the **Enter** button to view the *DSP* Menu.
(FLAT / BASS / GRAPHIC EQ. / ROCK / POP / RAP / COUNTRY / R&B / HIP-HOP / BLUES / SOUNDTRACK / LATIN / JAZZ / CLASSICAL / METAL / GOSPEL / ALTERNATIVE ROCK / CLASSIC ROCK / DANCE / PUNK / REGGAE / HARD ROCK)

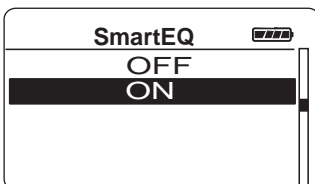
3. Press the **MENU** button to return to the main menu.

Smart EQ

Smart EQ allows you to tie a preset DSP mode to a corresponding Genre for enganced listening experience.



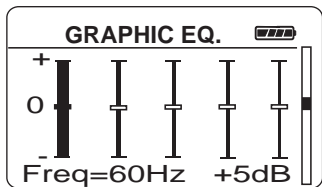
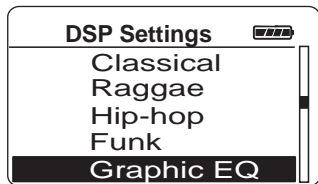
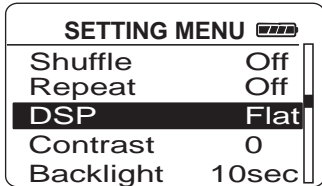
1. Scroll the **ENTER** button to highlight *SmartEQ* on the *Settings* screen.



2. Press the **Enter** button to view the *SmartEQ* Menu.
3. Scroll the **ENTER** button to adjust the setting and press again to confirm.
4. Press the **MENU** button to return to the main menu.

Personalizing DSP Output (EQ menu item)

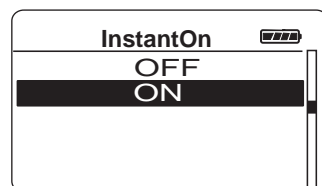
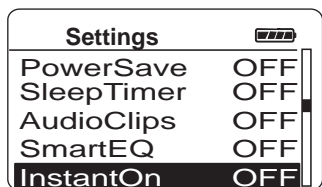
Graphic EQ: enables you to personalize audio output settings.



1. Scroll the **ENTER** button to highlight *DSP* on the *Settings* screen.
2. Press the **Enter** button to view the *DSP* Menu.
3. From the *DSP* Menu, scroll the **ENTER** button to select *Graphic EQ*.
4. Press the **Enter** button to show the *Graphic EQ* display.
5. Scroll the **ENTER** button to move among frequency adjustments (60Hz, 250Hz, 1kHz, 4kHz and 12 kHz).
Use the **ENTER** button to adjust levels between +12dB and -12dB.
6. Press the **MENU** button to return to the previous menu.

Instant On

InstantOn allows the player to be instantly powered up while retaining the information of the last played track. However after 48 hours of zero key activity on the player, the player shall revert to a deep sleep state and the last played information shall no longer be valid.

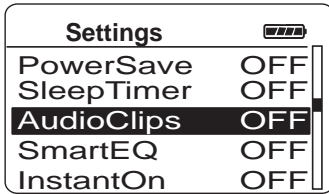


1. Scroll the **ENTER** button to highlight *InstantOn* on the *Settings* screen.
2. Press the **Enter** button to view the *InstantOn* Menu.
3. Scroll the **ENTER** button to adjust the setting and press again to confirm.
4. Press the **MENU** button to return to the main menu.

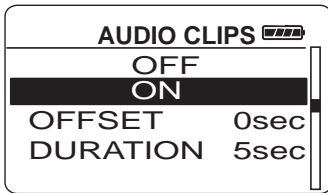
Lyra Micro jukebox

Audio Clips

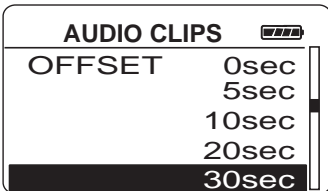
You can quickly navigate the audio contents of a file when activating Audio Clips function (only in STOP mode).



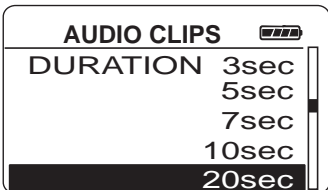
1. Scroll the **ENTER** button to highlight *Settings* in the top menu.
2. Press **ENTER** to view options listed
3. Scroll the **ENTER** button to highlight *AudioClips*.
4. Scroll the **ENTER** button to select between ON / OFF, and press again to confirm.



5. Scroll the **ENTER** button to select among options in setting.
OFFSET (between 0 to 30 sec)



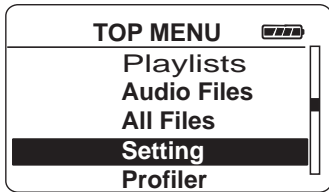
DURATION (between 3 to 20 sec)



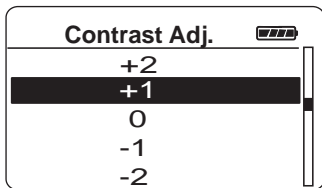
6. Scroll the **ENTER** button to adjust the setting and press again to confirm.
7. Press the **MENU** button to return to the main menu.

System Settings

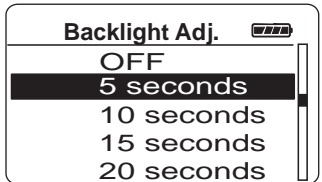
You can personalize the display settings.



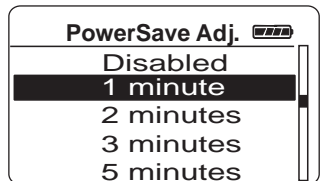
1. Scroll the **ENTER** button to highlight *Settings* in the top menu.
2. Press **ENTER** to view options listed
3. Scroll the **ENTER** button to highlight the setting (*Contrast, Backlight, PowerSave* or *Sleep timer*) you want to adjust.
4. Press the **ENTER** button to select among options in each setting.



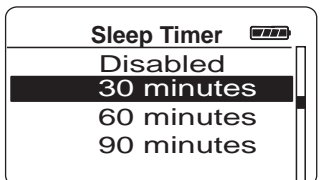
Contrast (between +5 to -5)



Backlight (Off, 5 sec, 10 sec 15sec or 20 sec)



PowerSave (Disabled, 1, 2, 3, 5 min)



Sleep timer (Disabled, 30, 60 or 90 min)

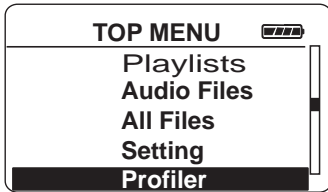
5. Scroll the **ENTER** button to adjust the setting and press again to confirm.
6. Press the **MENU** button to return to the previous menu.

Profiler

The application will profile and sort supported audio files on your Lyra Micro Jukebox so you can sort and play them properly.

***Note:** It is best to profile your contents on your PC after each transfer of music files. Profiling on the unit will take longer and may use up battery power.*

***Note:** Approximately 500 songs can be profiled on the Lyra Micro Jukebox. If the number of audio files exceed this limit, use your PC for profiling .*



1. Scroll the **ENTER** button to highlight *Profiler* in the *Top Menu*.
2. Press the **Enter** button to view the Profiler Menu.
3. Scroll the **ENTER** button to select YES / NO to confirm whether you want to re-profile the content or not..
4. Press **Enter** to start profiling contents on the Lyra Micro Jukebox.
5. Press the **MENU** button to return to the previous menu.

Portable Hard Drive Capability

Since Lyra Micro Jukebox has a 1.5-gigabyte hard drive, you can use it to transport files - any files, not just music files. Some possible uses for this feature are as follows:

- Create back-ups/archive files.
- Connect to other computers - at work, for example.
- Transport digital photo albums.
- Transport files from one computer to another computer. For example, instead of putting files at work on a zip or accessing them on your home computer via e-mail or remote access, you can put the files on your Lyra Micro Jukebox.
- Capture internet downloads.
- Share information.

Check for Updates

Visit <http://www.thomson-lyra.com> for the latest news and firmware upgrades for our Lyra Micro Jukebox. You must update your system after new downloads have been made in order for the new applications to be executed.

Note: * Available upon future upgrade.

Tips and Troubleshooting

Problem: Player repeats same tracks or all tracks.

- Repeat play is turned on. Press the MENU button to change the play mode.

Problem: Audio distorted at high volume.

- Select another DSP setting.
- Turn down the volume.


Problem: The audio tracks on my Lyra keep skipping or popping.

- You'll need to re-record the audio track – make sure you close all other applications on your PC when you record.

Problem: Player turns itself off.

- Your Lyra Micro Jukebox turns itself off if you leave it in pause mode for an inordinate amount of time.

Problem: Songs aren't listed in any of the sort modes (Album, Genre, Title, Audio Files).

- The contents of the Lyra Micro Jukebox haven't been profiled (sorted) since the last file transfer. Select the *Profile Device Contents...* menu item from the Lyra Micro Jukebox profiler system tray application on your PC to profile (sort) the contents of the device. The icon in the system tray looks like this .

Problem: Bad or missing file error message displayed on the Lyra Jukebox.

- The Lyra Jukebox system files are corrupted or missing. Select the *Update System Files...* menu item from the Lyra Jukebox profiler system tray application on your PC to update the necessary system files.

Problem: Lyra Jukebox Profiler application icon – – doesn't appear in the system tray.

- You can restart Windows to auto-launch the application, or you can double-click or run the Lyra Jukebox Profiler executable file that's in the Profiler sub-folder of the installation directory that was specified during the setup process – (Example Directory: C:\Program Files\Thomson multimedia\Lyra MP3 Jukebox\Profiler\LYRAHDDProfilerTrayApp.exe).

If the problem persists, you might need to reinstall the Lyra Micro Jukebox software.

Problem: Lyra Micro Jukebox does not respond.

- Press RESET button to reset the unit.

FAQ (Frequently Asked Questions)

Question: What is mp3?

mp3 is an abbreviation for MPEG-1, Layer 3 Audio (MPEG = Motion Picture Experts Group). This is a digital sound encoding and compression process that was developed by the Fraunhofer Institut für Integrierte Schaltungen and Thomson. mp3 is an international standard and is well suited for the transfer of high quality audio files over telephone or ISDN lines, and over the internet.

Specifications & System Requirements

Hardware

- Dimensions: 5.5 cm L, 2.5 cm W, 5.7cm H
- Unit Weight: 90.5 grams
- 1500MB / 1.5 Giga Byte Storage
- Stereo Headphone Jack
- Mini USB Connection Jack
- Battery Operated: Internal rechargeable Lithium ion battery.

Hard Disc

- External Hard Disc Drive: When connected to a computer via USB, the Lyra Micro Jukebox is capable of storing any file type allowing the user a fast, convenient method of storing, retrieving, and transferring files. Including word processing files, presentations, spreadsheets and any other computer files.
- Capacity: 1.5 GB
- Rotational Speed: 4400 RPM
- Connection: USB 2.0 High Speed

Software

- Includes Music Management software with the Lyra Jukebox applications and the MusicMatch Jukebox software.

MusicMatch Jukebox software lets the user organize all tracks in a digital music library, create custom playlists through drag and drop interface.

- Encodes mp3 files.
- Auto DJ creates automatic Playlists based on the user's sorting preferences. Scans the entire Music Library for specific search results.
- Integrated CD Player.
- Export to WAV
- mp3 Equalizer

PC Hardware Requirements

- 233MHz or higher (Pentium II 300 MHz or higher recommended)
- Windows® 98SE, Me, XP or 2000
- Internet Explorer 4.0 or better with Internet access
- 32 MB RAM (64 MB recommended)
- Free hard disk space (4 MB for the software plus 1 MB for every minute of CD quality audio that will be stored on the PC).
- CD-ROM drive capable of digital audio extraction
- USB port
- Installed sound card
- 16-bit color video card

Accessories

- CD-ROM Music Management Software
- USB Connection Cable
- AC/DC Adapter
- Cliphone™ Stereo Headphones

Miscellaneous Specifications

- Signal to Noise Ratio (>85dB)
- THD (<0.1%)

1 MusicMatch and MusicMatch Jukebox are registered trademarks of MusicMatch Corp.

2 Warning – This product is not intended for the unauthorized recording or duplication of copyrighted material.

visit us at www.thomson-europe.com or www.thomson-lyra.com

Please do not send any products to the address listed in this manual or on the carton.
This will only add delays in service for your product.

THOMSON
46, quai Alphonse Le Gallo
92648 Boulogne Cedex
FRANCE
(EN)
www.thomson.net

Free Manuals Download Website

<http://myh66.com>

<http://usermanuals.us>

<http://www.somanuals.com>

<http://www.4manuals.cc>

<http://www.manual-lib.com>

<http://www.404manual.com>

<http://www.luxmanual.com>

<http://aubethermostatmanual.com>

Golf course search by state

<http://golfingnear.com>

Email search by domain

<http://emailbydomain.com>

Auto manuals search

<http://auto.somanuals.com>

TV manuals search

<http://tv.somanuals.com>