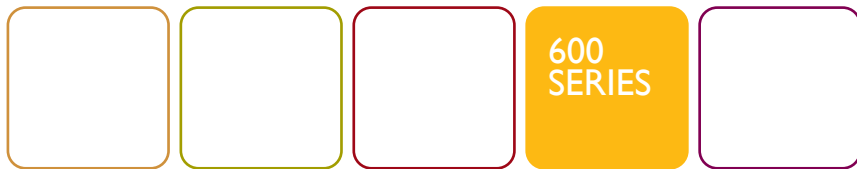


# SpeedTouch™ 605s

Business SHDSL Router

Setup and User's Guide  
Release R4.2



**THOMSON**

speedtouch™



# SpeedTouch™605s

Setup and User's Guide

Release R4.2

speedtouch™

Status v1.0  
Change Note PeckelbeenS  
Short Title Setup and User's Guide ST605s R4.2 (en)  
Copyright

© 2003 THOMSON. All rights reserved. Passing on, and copying of this document, use and communication of its contents is not permitted without written authorization from THOMSON. The content of this document is furnished for informational use only, may be subject to change without notice, and should not be construed as a commitment by THOMSON. THOMSON assumes no responsibility or liability for any errors or inaccuracies that may appear in this document.

speedtouch™

---

# Contents

---

<b>1</b>	<b>SpeedTouch™ Installation .....</b>	<b>3</b>
1.1	Getting Acquainted with the SpeedTouch™ .....	4
1.2	Setting up the SpeedTouch™ .....	6
1.3	SpeedTouch™ Configuration Setup .....	7
1.3.1	Configuration Setup for Microsoft Windows Operating Systems .....	8
1.3.2	Configuration Setup for other Operating Systems.....	14
1.4	Dr SpeedTouch™ Installation .....	17
<hr/>		
<b>2</b>	<b>SpeedTouch™ Internet Connectivity .....</b>	<b>21</b>
2.1	Surfing the Internet .....	22
2.2	Connect to the Internet via SpeedTouch™'s embedded PPP client. ....	23
2.2.1	Internet Sessions via Windows XP's UPnP .....	24
2.2.2	Internet Sessions via the SpeedTouch™ Web Pages (all OSs).....	25
2.3	Connect to the Internet via a Broadband Dial-in Client .....	26
2.3.1	Using the Windows XP Dial-in Client.....	27
2.3.2	Using the Mac OS X Dial-in Client.....	30
<hr/>		
<b>3</b>	<b>SpeedTouch™ Web Interface.....</b>	<b>31</b>
3.1	Basic Topics Menu Links .....	34
3.2	Advanced Topics Menu Links .....	37

---

<b>4</b>	<b>SpeedTouch™ NAPT Manager .....</b>	<b>51</b>
----------	---------------------------------------	-----------

---

<b>5</b>	<b>SpeedTouch™ System Software Upgrade .....</b>	<b>57</b>
----------	--	-----------

5.1	The SpeedTouch™ Upgrade Wizard .....	58
-----	--------------------------------------	----

5.2	Manual System Software Management via BOOTP Server .....	62
-----	--	----

---

<b>6</b>	<b>Troubleshooting .....</b>	<b>65</b>
----------	------------------------------	-----------

6.1	General.....	66
-----	--------------	----

6.2	SpeedTouch™ Default Configuration.....	67
-----	--	----

---

# 1 SpeedTouch™ Installation

---

**Introduction** Thank you for purchasing the SpeedTouch™ 605s Business SHDSL Router! With the SpeedTouch™ 605s Business Symmetrical High speed Digital Subscriber Line (SHDSL) Router, surfing the Internet will become a whole new experience.

---

**In this Setup and User's Guide** This User's Guide will assist you in getting acquainted with the SpeedTouch™ 605s Business SHDSL Router and in getting connected quickly to the Internet.

---

**Terminology** Generally, the SpeedTouch™ 605s will be referred to as SpeedTouch™ in this Setup and User's Guide unless specifically indicated.

---

**Safety instructions** Before connecting the SpeedTouch™, read the SpeedTouch™ Quick Installation Guide and Safety Instructions.

---

**UPnP** The SpeedTouch™ 605s is a Universal Plug and Play (UPnP) certified product. UPnP enables your computer to discover and control UPnP devices on the network.

**Note** For more information about how to install UPnP on your computer please consult your operating system's user's guide.

---

**Documentation and software updates** The SpeedTouch™ 605s product continues to evolve as extra and new functionalities are made available.

For more information on the latest technological innovations, software upgrades, and documents, please visit the SpeedTouch™ web site at:

[www.speedtouch.com](http://www.speedtouch.com)

## 1.1 Getting Acquainted with the SpeedTouch™

### Introducing the SpeedTouch™

Prior to proceeding, please make sure to read the SpeedTouch™ Quick Installation Guide first. It provides important package content and safety information. Check whether all items are present in your package.

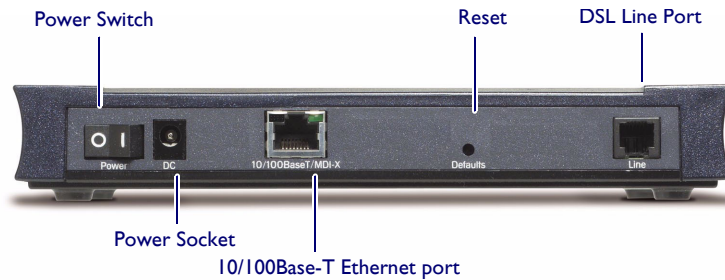
In the event of damaged or missing items, please contact your local product dealer for further information.

### Front and back panel layout

The SpeedTouch™ 605s Business SHDSL Router is presented in a slim line housing:



The device is equipped with a single 10/100Base-T Half-/Full-duplex MDI-X Ethernet port:



### Front panel LEDs

The SpeedTouch™ 605s Business SHDSL Router is equipped with five LEDs on its front panel, indicating the state of the device during normal operation:

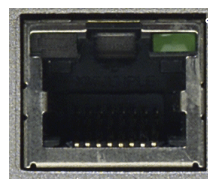
Indicator			Description
Name	Color	State	
LAN	Green	Flashing	Ethernet LAN activity
		Off	No Ethernet LAN activity
Line TX	Green	Flashing	ATM cell transmission on DSL line
		Off	No transmission activity
Line RX	Green	Flashing	ATM cell reception on DSL line
		Off	No reception activity
Line Sync	Green	Off	No SHDSL line
		Flashing	Initialization of SHDSL line
		On	SHDSL line synchronized



Indicator			Description
Name	Color	State	
PWR/Alarm	Green	Flashing	Back-to-defaults
		On	Power on, normal operation
	Orange	On	Self test
	Red	Flashing	Power on
		On	Power on, selftest failed

Ethernet port(s) LEDs

The Ethernet port on the rear panel has one LED:



Link Integrity/Activity LED

10/100Base -T

Indicator Name	Color	State	Description
Integrity/Activity	Green	Off	No connection on this port
		On	Ethernet link up. No activity
		Flashing	Activity on this Ethernet port

DSL Port

Service	Port pinning
2-wire SHDSL	3/4

DSL service

The appropriate SHDSL service must be available at your local premises.

## 1.2 Setting up the SpeedTouch™

---

Local network For Ethernet connectivity you need at least:

- A computer with installed Ethernet Network Interface Card (NIC) or available on-board Ethernet port
- If needed, a hub or switch and the necessary connection cables

---

Ethernet Cables In the SpeedTouch™605s box, a full wired Cat.5 straight-through RJ45/RJ45 Ethernet cable, further referred to as LAN cable is included.

You can use LAN cables other than the one provided in the box. However make sure to use correct connection cables.

---

Wiring procedure Proceed as follows:

- 1 Use the included LAN cable to wire your computer's Ethernet port to the SpeedTouch™605s Ethernet port.
- 2 Use the included DSL cable to wire the SpeedTouch™605s's Line port to your telephone wall outlet.
- 3 Plug the power adapter's coaxial jack into the SpeedTouch™605s DC inlet and plug the power adapter in a wall outlet.

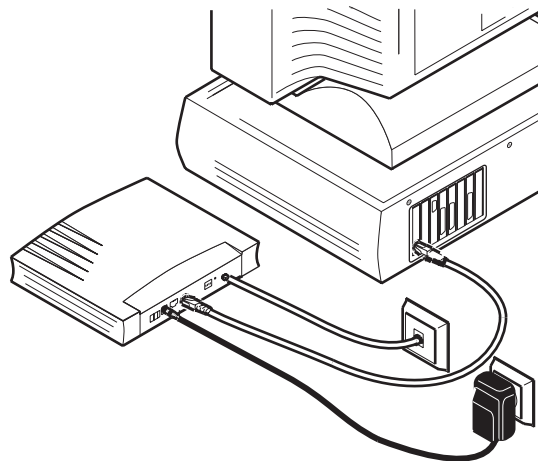
**Note** Always check first whether the included power adapter suits the local power specifications.

---

More information on Ethernet wiring For more information, see the application note “The SpeedTouch™ and Ethernet Connectivity”.

---

PC wiring Once all connections are made, the result should look similar as below:



---

## 1.3 SpeedTouch™ Configuration Setup

---

**Internet connectivity** Some configuration may be required to prepare the SpeedTouch™ for Internet connectivity.

---

**What you need from your ISP** You might need a user account with an Internet Service Provider (ISP) for Internet access. For this user account, your ISP will provide you with:

- A user name (logon ID)
- A password

Other information may be required, depending on the ISP's specific requirements.

---

**Configuration of the SpeedTouch™** Depending on your computer's Operating System (OS) the configuration of your Internet connectivity can be done automatically or manually.

If your computer runs:

- A Microsoft Windows OS.  
The SpeedTouch™ Setup wizard, included on the SpeedTouch™ Setup CD-ROM, will automatically guide you through the configuration of both the SpeedTouch™ and your PC for setting up the appropriate configuration.  
Proceed with “[1.3.1 Configuration Setup for Microsoft Windows Operating Systems](#)” on page 8.
- Another OS, e.g. Mac OS, Unix, Linux.  
The SpeedTouch™ Embedded Easy Setup wizard, accessible from the SpeedTouch™ web pages, will automatically guide you through the configuration of the SpeedTouch™.  
Proceed with “[1.3.2 Configuration Setup for other Operating Systems](#)” on page 14.

## 1.3.1 Configuration Setup for Microsoft Windows Operating Systems

---

**Microsoft Windows** One of the following Windows operating systems must be installed on your PC(s):

- Windows 98
- Windows 98SE
- Windows ME
- Windows NT4.0 SP6
- Windows 2000
- Windows XP

You may need the Windows installation CD-ROM during installation.

---

**The SpeedTouch™ Setup wizard** The SpeedTouch™ Setup wizard procedure consists of two major parts:

- The detection procedure
- The configuration procedure

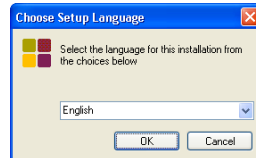
## The detection procedure

The detection procedure proceeds as follows:

- 1 Insert the SpeedTouch™ Setup CD-ROM in your PC's CD-ROM drive. The SpeedTouch™ CD Browser will start automatically.

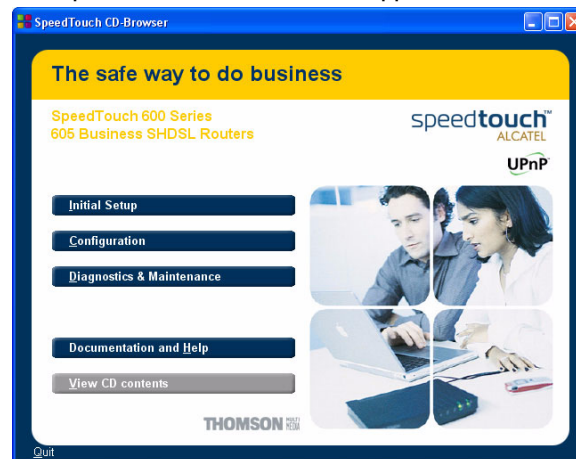
**Note** If the SpeedTouch™ CD Browser window does not appear automatically, open a Run window via Start > Run from the Start menu and enter the following path: *D:\Menu.exe*, where D stands for the drive letter of your CD-ROM drive.

- 2 The Choose Language window prompts you to select a language:



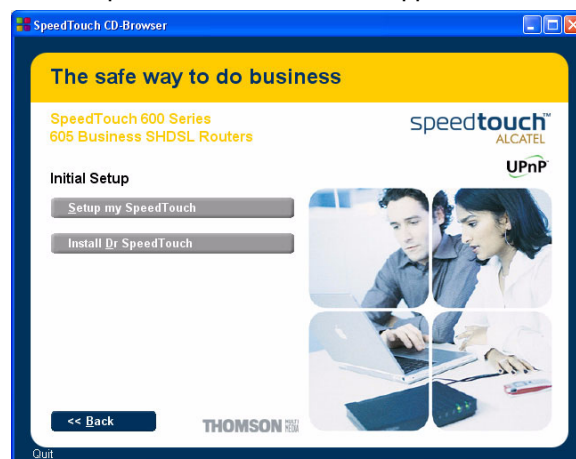
Select the language of your choice and click *OK*.

- 3 The SpeedTouch™ CD Browser appears:



Click *Initial Setup*.

- 4 The Setup and Installation window appears:



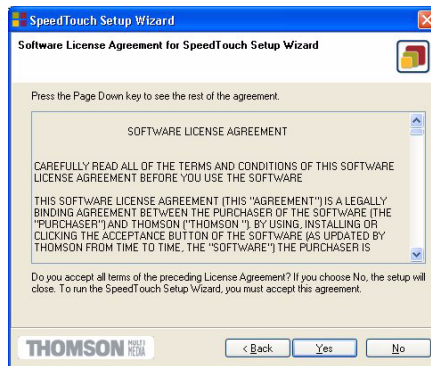
To start the SpeedTouch™ Setup wizard, click *Setup my SpeedTouch™*.

5 The Welcome to the SpeedTouch™ Setup Wizard window appears:



Click *Next* to proceed.

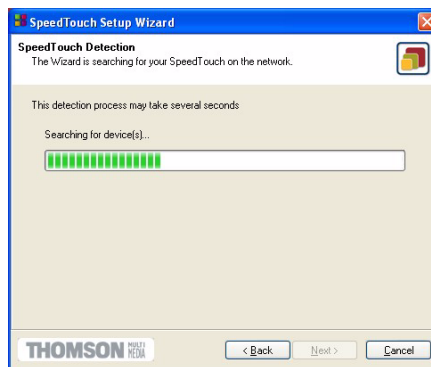
6 The Software License Agreement window appears:



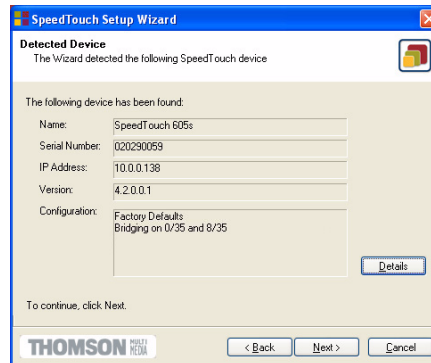
You must accept before continuing. Therefore click *Yes* to accept.

**Note** If you have already accepted this License Agreement in a previous configuration setup, this window will not be shown.

7 The Setup wizard will continue to search for the SpeedTouch™ on the network. The following window shows the detection progress:



- 8 The Setup wizard should find your SpeedTouch™ device on the local network. This is indicated by the following window:



In case more than one SpeedTouch™ device is found, a listing is provided from which you can select your SpeedTouch™.

**Note** If the Setup wizard does not find any SpeedTouch™ on the network an error window pops up. In this case check:

- Whether the SpeedTouch™ is turned on and fully initialized.
- Whether your PC is correctly connected to the SpeedTouch™ and has a valid IP address (i.e. any IP address but 0.0.0.0).
- Whether no dedicated firewall device or router is placed between your PC and the SpeedTouch™ and whether no personal firewall software is running on your PC.

To repeat the search for the SpeedTouch™, click *Back* and proceed with step 7 of this procedure.

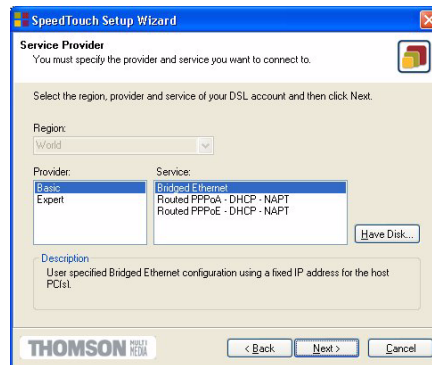
- 9 To continue with the configuration of your SpeedTouch™ and your PC, proceed with the configuration procedure described below.

## The configuration procedure

The Configuration procedure proceeds as follows:

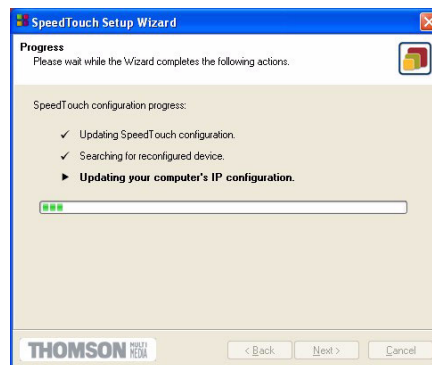
- 1 Once the SpeedTouch™ Setup wizard has detected your SpeedTouch™ device, you can proceed with the configuration procedure. If more than one SpeedTouch™ device is listed, select the appropriate one. Then, click *Next* to proceed.
 

**Note** If the SpeedTouch™ has been configured before, it may be protected by a system password. You must provide user name and system password before you can view the device details or continue with the configuration.
- 2 You will be asked to choose between reconfiguring your SpeedTouch™ or changing your Local Area Network configuration. Select *Reconfigure the SpeedTouch™* and click *Next*.
- 3 The following window invites you to select the appropriate connection profile for your Internet connectivity:



Select the connection profile of your choice and click *Next* to continue.

- Note** If the Service Provider has included a separate disk with a dedicated connection profile, click *Have Disk* to navigate to the location of the appropriate connection template file.
- 4 Subsequent screens will guide you through the configuration setup of both your SpeedTouch™ and/or your PC. Follow the instructions and enter the required information where needed. This information should be provided by your Service Provider.
- 5 In a final step all configurations will be applied to the SpeedTouch™ and your PC. You can follow the configuration progress in following window:





- 6 The SpeedTouch™ Setup wizard will appear again to announce that the configuration has been successful:



Click *Finish* to close the wizard.

**Note** In some cases, the SpeedTouch™ Setup wizard may ask you to restart your computer.

Most configuration profiles will enable SpeedTouch™'s DHCP server - and a PC's Ethernet port is configured as DHCP client by default. Therefore, in most cases, no additional configuration of your PCs must be done if you want to enable multiple PCs on your local network for accessing the Internet via the SpeedTouch™.

To make sure that all PCs are configured as expected (DHCP or fixed IP addresses) you can re-run the SpeedTouch™ Setup wizard on every PC and select the Change the LAN configuration option.

For fixed IP configurations, or other advanced settings, please follow the instructions provided by your ISP or network administrator.

## 1.3.2 Configuration Setup for other Operating Systems

**Supported Systems** As the SpeedTouch™ is OS-independent, this configuration setup can be used by any computer system.

**Note** The following procedure may equally be used on MS Windows OSs.

**TCP/IP** Ensure that your operating system has a valid TCP/IP configuration.  
Configure your computer with a static Net10 private IP address, e.g. 10.0.0.1. Ensure, however, that you do NOT use the 10.0.0.138 IP address as this is the default IP address of the SpeedTouch™.

To ensure that IP connectivity exists, you can ping the SpeedTouch™.

**Procedure** The configuration setup proceeds as follows:

- 1 To ensure that the SpeedTouch™ is in its factory default state, reset the SpeedTouch™ to the default configuration. See “6 Troubleshooting” on page 65.
- 2 Open a web browser and browse to the SpeedTouch™'s default IP address 10.0.0.138. See “3 SpeedTouch™ Web Interface” on page 31 for more information.
- 3 As a result the SpeedTouch™ System Info web page appears. Expand the Advanced Topics and click *Easy Setup*.

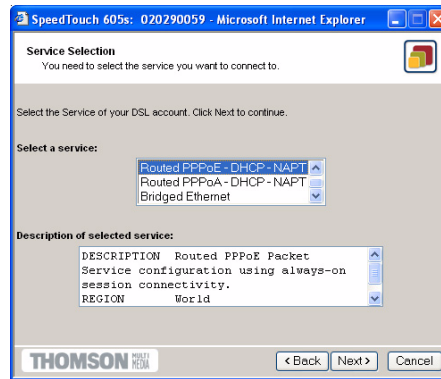
**Note** If the SpeedTouch™ is in factory defaults, the Easy Setup wizard will appear automatically.

- 4 The Welcome to the SpeedTouch™ Setup Wizard window appears:



Click *Next* to continue.

- 5 The following window invites you to select the appropriate connection profile for your internet connectivity:



In the Service list, click the connection profile of your choice.

**Note** You can add services to the Services list by uploading templates. See “[Templates](#)” on page 48 for more information on uploading templates.

- 6 Subsequent screens guide you through the configuration setup of both your SpeedTouch™ and/or your PC. Follow the instructions and enter the required information where needed. This information should be provided by your Service Provider.
- 7 In a final step all configurations are applied to the SpeedTouch™:



- 8 The SpeedTouch™ Setup Wizard appears again to announce that the configuration has been successful:



Click *Finish* to close the wizard.

- 9 After the configuration is applied on the SpeedTouch™ some additional configuration of your computer system may be necessary.

**Note** The required settings for your computer should be provided by your Service Provider, if applicable.

- 10 To check whether the new configuration was successfully completed, you can browse to the SpeedTouch™ and check its current status.

## 1.4 Dr SpeedTouch™ Installation

**Introduction** The Dr SpeedTouch™ application allows you to diagnose and troubleshoot your SpeedTouch™ 605s

With the Dr SpeedTouch™ application you can do the following:

- View the status and performance of the SpeedTouch™ device
- Run a Diagnostics program to locate a connectivity problem
- Run a Troubleshooter to help you solve a connectivity problem.

### Supported Operating Systems

Installing and using Dr SpeedTouch™ is only supported for following Microsoft Windows Operating Systems:

- Windows 98
- Windows 98SE
- Windows ME
- Windows NT4.0 SP6
- Windows 2000
- Windows XP

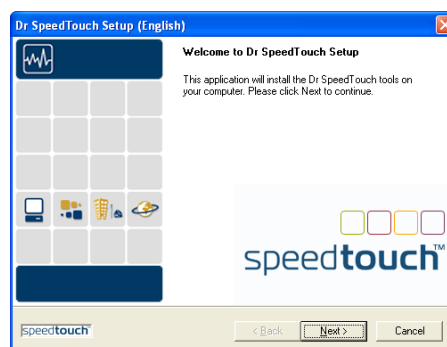
### Installation procedure

The installation procedure proceeds as follows:

- 1 Insert the SpeedTouch™ Setup CD-ROM in your PC's CD-ROM drive. The SpeedTouch™ CD Browser will start automatically. Choose your language and browse to Setup and Installation > Install Dr SpeedTouch™.

**Note** If the SpeedTouch™ CD Browser window does not appear automatically, open a Run window via Start > Run from the Start menu and enter the following path: D:\Menu.exe, where D stands for the drive letter of your CD-ROM drive.

- 2 The Dr SpeedTouch™ Setup wizard appears:




Click *Next* to continue.

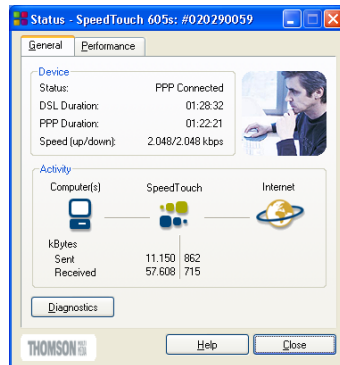
- 3 Subsequent screens will guide you through the installation. Follow the provided instructions and click *Next* whenever requested.
- 4 After installation, Dr SpeedTouch™ is started automatically.

Using Dr SpeedTouch™

By default Dr SpeedTouch™ is started automatically at boot of your system and runs in the background, i.e. minimized in the status area.

To pop up Dr SpeedTouch™:

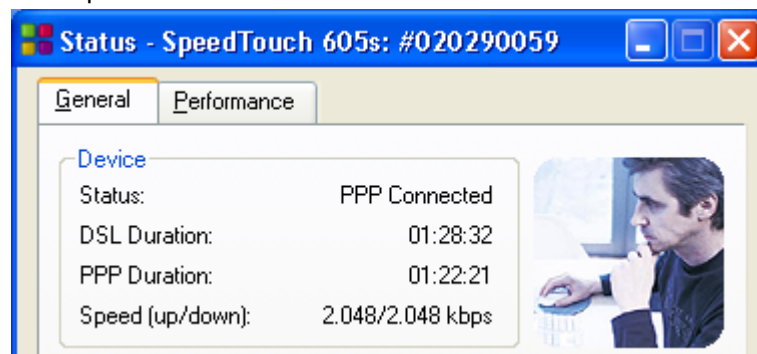
- 1 Double-click  in the status area.
- 2 Dr SpeedTouch™ searches your network for SpeedTouch™ devices. If more than one device is found, a list of available devices will be provided. If this is the case, select the SpeedTouch™ of your choice and click OK.
- 3 The Dr SpeedTouch™ window appears:



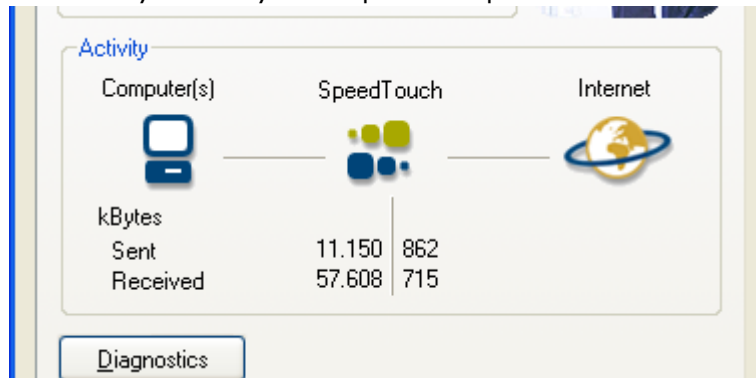
Dr SpeedTouch™ features

Dr SpeedTouch™ allows you to:

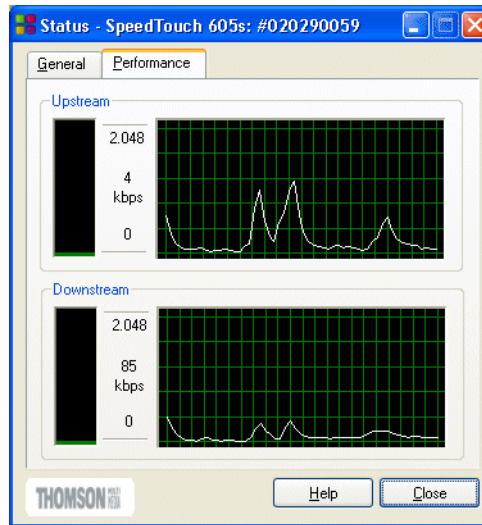
- View SpeedTouch™605s device information and status:



- View activity between your computer, the SpeedTouch™605s and the Internet:



- Monitor the downstream and upstream performance. of your DSL connection:



- Test and troubleshoot the connectivity of your computer and the SpeedTouch™ 605s device to your ISP and the Internet via the Diagnostics wizard.



**Note** For more information on Dr SpeedTouch™ please click *Help* in the application or press F1 context sensitive help.





## 2 SpeedTouch™ Internet Connectivity

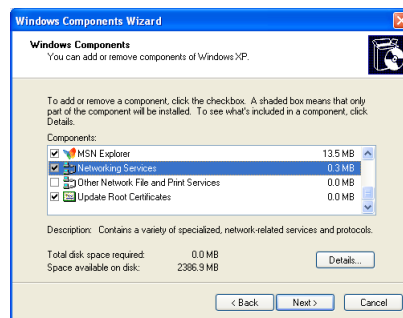
### Introduction

This chapter provides information on how to access the Internet and how to configure your SpeedTouch™ according to your preferences.

### Adding UPnP to a Microsoft Windows XP system

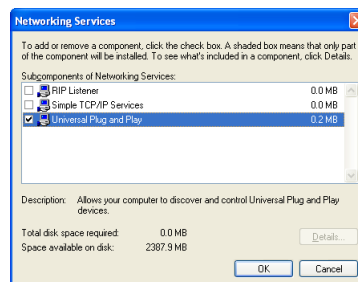
If you are running Microsoft Windows XP, we strongly recommend to add the Universal Plug and Play (UPnP) component to your system. To add the UPnP component proceed as follows:

- 1 On the start menu, click *Control Panel*.
- 2 The Control Panel window appears. Double-click the *Add or Remove Programs* icon.
- 3 The Add or Remove Programs window appears. Click *Add/Remove Windows Components*.
- 4 The Windows Components wizard appears:



Select *Networking Services* in the Components list and click *Details*.

- 5 The Networking Services window appears:



Select *Universal Plug and Play* and click *OK*.

- 6 Click *Next* to start the installation and follow the instructions in the Windows Components wizard.
- 7 At the end of the procedure the wizard prompts you that the installation was successful. Click *Finish* to quit the installation.

For more information on UPnP and SpeedTouch™ UPnP features go to the UPnP pages at the SpeedTouch™ web site:

[www.speedtouch.com/upnp.htm](http://www.speedtouch.com/upnp.htm)

## 2.1 Surfing the Internet

---

**Introduction** As soon as the SpeedTouch™ and the computers have been configured as outlined in “1.3 SpeedTouch™ Configuration Setup” on page 7, you can connect to the Internet.

---

**Access methods** Depending on the configuration of the SpeedTouch™ you may have:

- **Direct access**  
As soon as the initial configuration has been performed, continuous and immediate access is available via the DSL line.
- **Dial-in access**  
Access must be explicitly established, e.g. by “dialing” into a Broadband Remote Access Server (BRAS).

The method used depends on the configuration profile/file you used to configure the SpeedTouch™ and the Service Provider's requirements.

---

**Dial-in access** Depending on the SpeedTouch™ configuration, dial-in access is provided via:

- The SpeedTouch™'s Routed PPPoA or Routed PPPoE packet services with embedded PPP client.  
See “2.2 Connect to the Internet via SpeedTouch™'s embedded PPP client.” on page 23 for more information.
- A broadband dial-in application on your computer.  
See “2.3 Connect to the Internet via a Broadband Dial-in Client” on page 26 for more information.

---

**Your Internet connection** Regardless of whether a direct access or a dial-in access method is used to make your connection, once the connection is established, opening your web browser is enough to access the World Wide Web (WWW) or Internet.

**Note** In case of direct access, the remote organization might ask for a user name and password on an Internet welcome page.

## 2.2 Connect to the Internet via SpeedTouch™'s embedded PPP client.

**Introduction** The SpeedTouch™ supports both two most popular connection methods: Routed PPP over ATM (PPPoA) and PPP over Ethernet (PPPoE).

The connection method to use depends on the preferences of your ISP, hence the configuration profile you must apply to the SpeedTouch™.

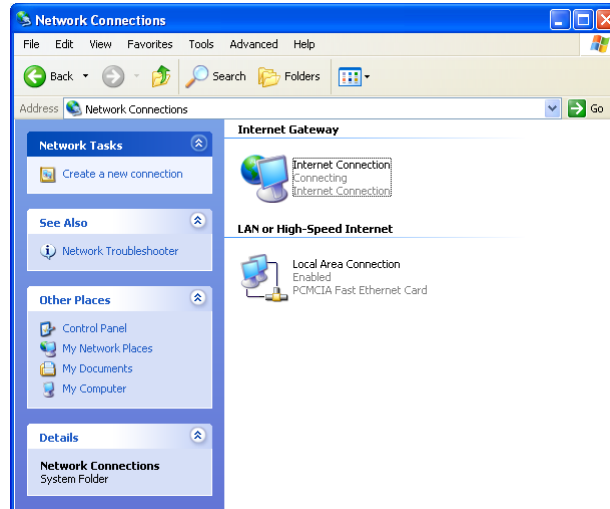
To use the embedded Routed PPPoA (PPPoE) dial-in client, the SpeedTouch™ needs to be configured for Routed PPPoA (PPPoE) via the SpeedTouch™ Setup wizard or the embedded Easy Setup wizard.

## 2.2.1 Internet Sessions via Windows XP's UPnP

Starting an Internet session via Windows XP's UPnP

To connect to the internet via Windows XP's Internet Connection icon proceed as follows:

- 1 Click *Control Panel* on the Start menu.
- 2 The Control Panel window appears. Double-click *Network Connections*.
- 3 The Network Connections window appears:



Double-click the *Internet Connection* icon.

- 4 Your computer connects to the Internet.

Terminating an Internet Session session via Windows XP's UPnP

To close an active Internet session:

- 1 Click *Control Panel* on the Start menu.
- 2 The Control Panel window appears. Double-click *Network Connections*.
- 3 The Network Connections window appears. Double-click the *Internet Connection* icon.
- 4 The Internet Connection Status window appears:



Click *Disconnect* to close the session.

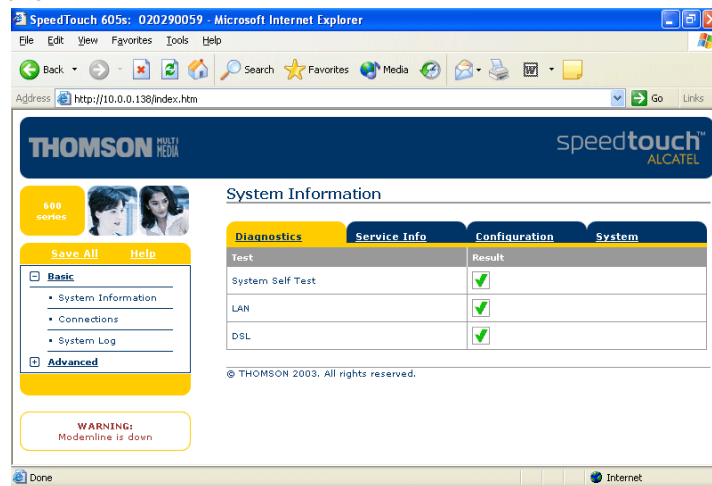
- 5 Your computer terminates the connection.

## 2.2.2 Internet Sessions via the SpeedTouch™ Web Pages (all OSs)

### Starting a PPP session

To open a Routed PPP connection to the Internet:

- 1 Open a web browser on your computer and browse to the SpeedTouch™ web pages:



- 2 If needed, expand the Basic Topics, and click *Connections* to open the Connections web page.
- 3 In the Connections table all configured Routed PPP entries are shown. In the Interface column click the entry you want to start a session with. As a result the entry will be highlighted.
- 4 Make sure the connection is disconnected.
- 5 If not provided yet, enter your user name and password in the appropriate fields. If you want the SpeedTouch™ to remember your credentials, select the Save this password check box.
- 6 Click *Connect*.  
While the SpeedTouch™ tries to start the session 'trying' appears in the State column of the entry. Once the session is started successfully the field displays 'up'. From then on you are online and you can start your application or browse the Internet.

### Terminating an opened PPP session

To close an active Routed PPP connection:

- 1 Ensure that you have access to the SpeedTouch™ web pages.
- 2 Browse to the SpeedTouch™ Connections page and select the connection entry you want to terminate the session for.
- 3 Click *Disconnect*. The entry's session state will change to 'Down', i.e. it becomes idle.

## 2.3 Connect to the Internet via a Broadband Dial-in Client

---

**Introduction** This section explains how you can connect to the Internet using a broadband dial-in application on a computer running:

- Microsoft Windows XP
- Mac OS X.

To use a broadband dial-in client, the SpeedTouch™ needs to be configured for Bridged Ethernet or Routed PPPoE (with PPPoE relay) via the SpeedTouch™ Setup wizard or embedded Easy setup wizard.

## 2.3.1 Using the Windows XP Dial-in Client

Configuring a dial-in connection on a Windows XP platform

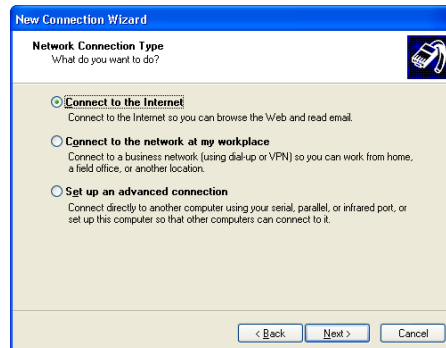
To create a new dial-in connection proceed as follows:

- 1 On the Start menu, click *Control Panel*.
- 2 The Control Panel window appears. Click *Network and Internet Connections*.
- 3 The Network and Internet Connections window appears. Click *Network Connection*.
- 4 In the Network Tasks menu, click *Create a new connection*. The New Connection wizard appears:

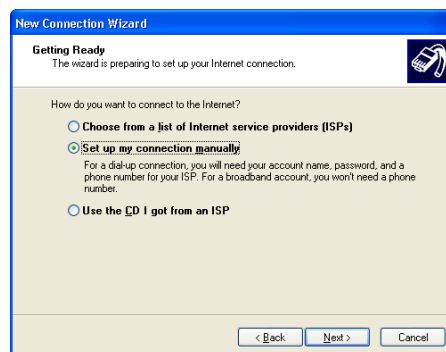


Click *Next* to continue.

- 5 In the next window, select the *Connect to the Internet* option and click *Next* to continue.

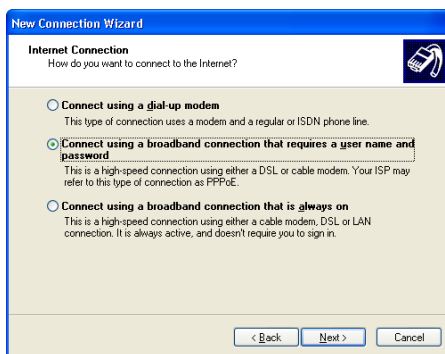


- 6 In the next window, choose how you want to set up your internet connection:



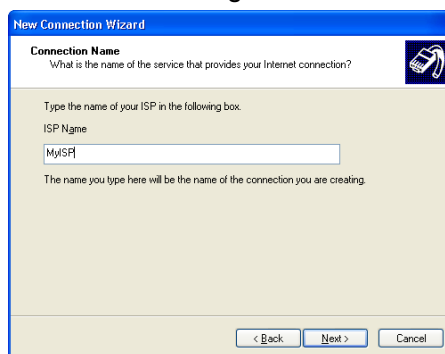
Select *Set up my connection manually* and click *Next* to continue.

7 In the next window, choose how you want to connect to the internet:

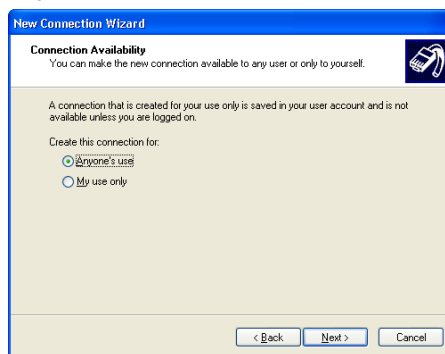


Select *Connect using a broadband connection that requires a user name and password*. Click *Next* to continue.

8 In the next window, give a name to the connection you are creating, e.g. MyISP.



9 In the next window, select whether the connection is available to any user or only to yourself.



10 In the next window, fill in the Internet account information. This information



should be provided by your Service Provider.

11 At the end of the configuration the following window appears:

Click *Finish* to complete the configuration.  
The Connect MyISP window (see below) appears.

Starting a dial-in  
Internet session from  
Windows XP

To connect to the internet proceed as follows:

- 1 On the Start menu, point Connect To and click the name of the connection you've created, e.g. *MyISP*.
- 2 The Connect MyISP window appears:

Enter User name and password if needed and click *Connect*.

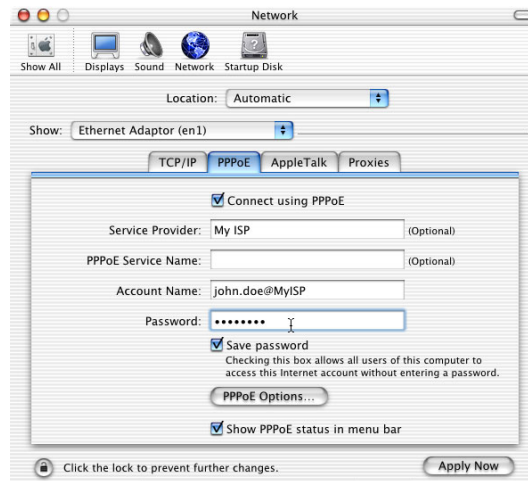
- 3 Your computer connects to the internet.

## 2.3.2 Using the Mac OS X Dial-in Client

Configuring a dial-in connection on a Mac OS X platform

To create a dial-in connection proceed as follows:

- 1 On the Apple menu, click *System Preferences*.
- 2 The System Preferences window appears. Click the Network icon.
- 3 The Network window appears:



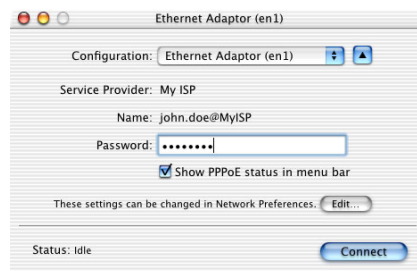
In the Show list, select Ethernet Adaptor (enx) and click the PPPoE tab.

- 4 Enter the Account Name and Password provided by your Service Provider and Click *Apply now*.

Starting a dial-in connection on a Mac OS X platform

To connect to the internet proceed as follows:

- 1 Click the Internet Connect icon in the dock.
- 2 The following window appears:



Make sure Ethernet Adaptor (enx) is selected in the Configuration list. Enter your password and click *Connect*.

- 3 Your computer connects to the internet.

## 3 SpeedTouch™ Web Interface

**Introduction** The SpeedTouch™ comes with integrated local configuration capabilities. The local configuration, via the SpeedTouch™ web interface, is based on the HTTP server/web browser concept. It allows you to configure your SpeedTouch™ via a web browser using HTML pages from any local computer attached to the Ethernet interface.

**Requirements** Before you access the SpeedTouch™ pages, make sure that your browser is configured to directly connect to the SpeedTouch™, i.e. that it is not using a proxy server. If required, you can disable the proxy server for the time you want to access the SpeedTouch™ web pages. For more information on how to disable your web browser's proxying, please consult the web browser's user's guide.

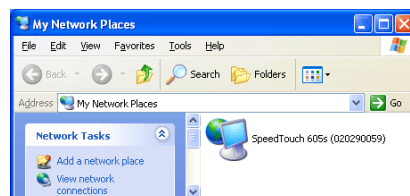
**Use of the SpeedTouch™ web interface** In most cases, the SpeedTouch™ is correctly configured for your Internet connectivity via the appropriate configuration profile/file and no further configuration on the web interface is needed.

**Access to the SpeedTouch™ web interface** To access the SpeedTouch™ web pages:

- 1 Start the web browser on your computer.
- 2 Browse to the SpeedTouch™ at the SpeedTouch™'s IP address (in most cases 10.0.0.138).
- 3 If a system password has been set, an authentication window will be displayed. Enter user name and system password in the appropriate fields
- 4 Click *OK*.

**Access to the SpeedTouch™ web interface via UPnP** If your Windows XP PC is UPnP enabled, you can access the SpeedTouch™ web pages as follows:

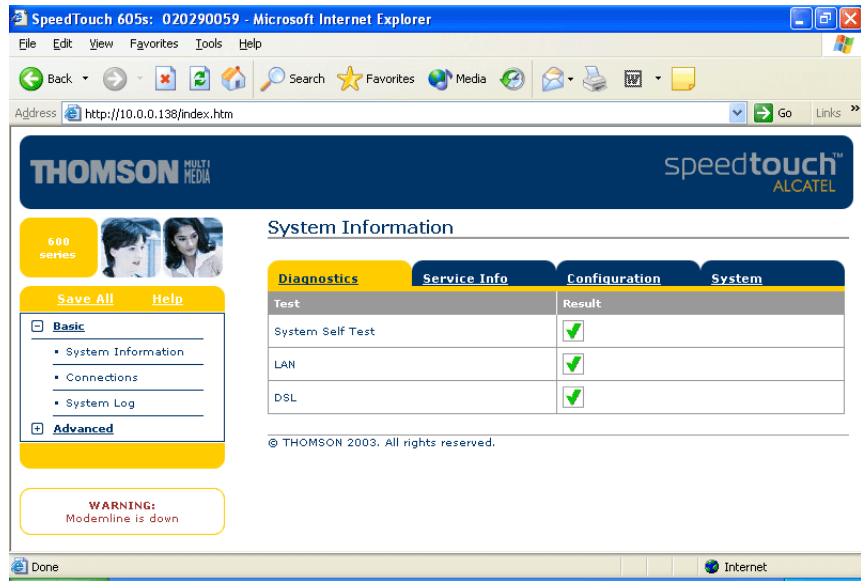
- 1 Double-click *My Network Places* on your desktop.
- 2 The following window appears:



Double-click the SpeedTouch™ icon.

- 3 If a system password has been set, an authentication window will be displayed. Enter user name and system password in the appropriate fields.
- 4 Click *OK*.

**Result** As a result the System Information page appears:



From now on, the SpeedTouch™ acts as a web server, sending HTML pages/forms at your request. You can fill out these pages/forms and submit them to the SpeedTouch™. The latter scans the pages and performs the appropriate configurations.

**Topic menu and links**

On the left of each of the SpeedTouch™ web pages a topics menu is provided. This menu navigates you via links through all configurational aspects of the SpeedTouch™.

For your convenience the links are sorted in two expandable topics menus: Basic and Advanced. The links in the Basic topic menu lead you to pages for basic SpeedTouch™ configuration and maintenance, i.e. the pages for every-day use. The Advanced topic menu, contains the links which allow advanced configuration of the SpeedTouch™. These pages need only to be accessed for some specific operations.

**Basic topic links**

The following table lists all Basic topic links:

BASIC topic menu	
Click...	To...
System Information	View the current configuration profile. View the current DSL line status.
Connections	Establish dial-in connections.
System Log	View the activity on the SpeedTouch™ since power on.

Advanced topic links    The following table lists all advanced topic links:

ADVANCED topic menu	
Click...	To...
Diagnostics	View SpeedTouch™ diagnostics.
Easy Setup	Configure the SpeedTouch™.
IP Addresses	View/configure the SpeedTouch™ IP interfaces.
IP Routing	View/configure the SpeedTouch™ IP router.
NAPT	View/configure static NAPT entries. View/configure multi-NAT entries. Define a default local server for inbound connectivity. Configure UPnP.
DHCP	View/configure the SpeedTouch™ DHCP server/client.
DNS	View/configure the SpeedTouch™ DNS server/client.
System	Backup and/or upload configuration files. Restore the SpeedTouch™ default settings.
System Password	Set a system password.
Templates	View/upload templates.
Language	Configure the web page language.

**Help**    The [Help](#) link in the topics menu header allows you to browse the SpeedTouch™ online Help.

For more information on a specific topic, click the context-related [Help](#) links located at the Topic's web pages.

**Save all**    It is advised to save the SpeedTouch™ configuration and to back it up whenever you have made changes to the SpeedTouch™ settings.

To save the configuration, click [Save All](#) link in the topics menu header.

For backing up the SpeedTouch™ configuration, see “[System](#)” on [page 47](#).

## 3.1 Basic Topics Menu Links

### System Information

Click this link to display the System Information page. This page is also the Speed-Touch™ home page.

The System Information page consists of four sections:

- Click the Diagnostics tab to view the results of the System Self Test, LAN connectivity and DSL synchronization test:

Diagnostics		Service Info	Configuration	System
Test	Result			
System Self Test	✓			
LAN	✓			
DSL	✓			

- Click the Service Info tab to view the current physical status of the SHDSL line:

Diagnostics	Service Info	Configuration	System
DSL		Statistics	
Line Status		Enabled	
Bandwidth Up/Down (Kbit/sec)		2340 / 2340	
Uptime		00:25:23	
kBytes Tx/Rx		83 / 4	
Interface		PPPoA_1	
IP Addresses/Netmasks		217.136.165.117/32	
Primary DNS		195.238.2.21	
Secondary DNS		195.238.2.22	

The DSL Statistics allow you to view:

- Line Status: this shows whether the DSL link is synchronized (Enabled) or not (Initializing).
- Bandwidth Up/Down: the maximum available bandwidth of the SHDSL link in both up- and downstream direction.
- Uptime: The duration of the current Enabled Line Status.
- kBytes Tx/Rx: the amount of kilobytes (kBytes) sent (Tx) and received (Rx) since the establishment of the DSL link.
- Click the Configuration tab to view the configuration profile currently active on the SpeedTouch™:

Diagnostics	Service Info	Configuration	System
Item	Description		
Region	World		
Provider	Basic		
Service Name	Routed PPPoA - DHCP - NAPT		
Service Description	Routed PPPoA Packet Service configuration using always-on session connectivity.		

- Click the System tab to view some important system information of the SpeedTouch™:

Diagnostics		Service Info		Configuration		System	
Item				Description			
Product Name				SpeedTouch 605s			
Physical Address				00-90-D0-00-00-00			
Software Release				4.2.0.0.1			
Board Name				SHNT-C			
Serial Number				020290059			
Product Code				3EC36938AAAA			

The System table lists:

- The SpeedTouch™ product name.
- The unique Medium Access Control (MAC) address of your SpeedTouch™. This MAC address can be used to identify your SpeedTouch™.
- The SpeedTouch™ Software Release.
- The SpeedTouch™ Board Name.
- The SpeedTouch™ Serial Number
- The SpeedTouch™ Product Code.

## Connections

Click this link to view the Connections page.

This page allows you to establish dial-in connections, if applicable:

Connections				
Interface	Destination	Mode	Link	State
<input checked="" type="checkbox"/> pppoe_pppoe	ethoa_pppoe	always-on	connected	up
Connection properties				
<b>Specify your username and password:</b>				
User:	<input type="text" value="johndoe@MyISP"/>			
Password:	<input type="password" value="••••••"/>			
<input checked="" type="checkbox"/> Save this password				
<a href="#">Disconnect</a>			<a href="#">Help</a>	

See “2.2.2 Internet Sessions via the SpeedTouch™ Web Pages (all OSs)” on page 25 for more information on how to use the Dial-in Connections table.

[System Log](#) Click this link to view the System Log page.

This page allows you to view the activity on the SpeedTouch™ since power on:

Logged Messages	
System Up Time	00:05:58 (since power on)
View Mode	All logged messages
<a href="#">Stop AutoRefresh</a> <span style="float: right;"><a href="#">Help</a></span>	
System Up Time	Message Contents
00:05:53	LOGIN User logged in on HTTP (from 10.0.0.1)
00:00:43	PPP link up (PPPoA_1) [192.6.11.151]
00:00:30	xDSL linestate up (downstream: 2340 kbit/s, upstream: 2340 kbit/s)
00:00:30	SHDSL PORT Link Up : Line Rate = 2048Kbps, PSD = Symmetric Europe, Current Power Backoff = Selected, 2 wires
00:00:00	KERNEL Cold restart
<a href="#">View All</a> <span style="margin: 0 20px;"><a href="#">View Important only</a></span> <span style="float: right;"><a href="#">View Critical only</a></span>	



## 3.2 Advanced Topics Menu Links

Diagnostics Click this link to display the Diagnostics page.

This page consists of three expandable sections:

- Expand the System section to view some important system information:

**System**

Product Name = SpeedTouch 605s  
 Vendor Name = THOMSON  
 Software Version = 4.2.0.0.1  
 Serial Number = 020290059  
 CLI Version = 1.2.0  
 Bootloader Version = 2.0.5  
 ASIC Version = 1b01  
 Board Name = SHNT-C  
 Modem Label Version = 2.11.27

- Expand the Wan section to view the current DSL state and connection information click the plus next to DSL and Connections:

**Wan**

**DSL**

DSL Flavour = SHDSL  
 Speed (Kbit/s) = 2304  
 Uptime = 00:33:18  
 Send (kByte) = 75  
 Read (kByte) = 36

**Properties**

Wire-mode = 2  
 PBO Value (dB) = 6  
 SNR Margin (dB) = 15  
 Attenuation (dB) = 1  
 Transmit Power (dBm) = 8  
 GSI firmware = SHDSL R2.3.1

**Statistics**

**Connections**

**PPPoA\_1**

Click to perform an IP connectivity test.

- Expand the Lan section to view the LAN configuration:

**Lan**

**Ethernet**

Interface name = eth0  
 Physical address = 00:90:d0:5b:bc:9c

**Physical Interface 1**

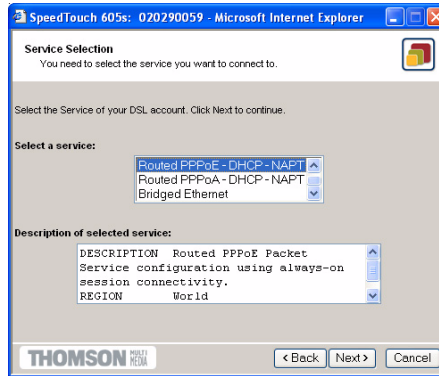
Mode = forwarding  
 Auto Negotiation = Yes  
 Type = 100BaseTFD  
 kBytes Tx/Rx = 1468 / 413  
 Frames Tx/Rx = 4946 / 4002  
 Discarded frames = 0

**Easy Setup** To configure the SpeedTouch™ using the Easy Setup wizard:

- 1 Click Advanced > Easy Setup to start the Easy Setup wizard.
- 2 The Welcome to the SpeedTouch™ Setup Wizard window appears:



- 3 The following window invites you to select the appropriate connection profile for your internet connectivity:



In the Service list, click the connection profile of your choice.

**Note** You can add services to the Services list by uploading templates. See “[Templates](#)” on page 48 for more information on uploading templates.

- 4 Subsequent screens guide you through the configuration setup of both your SpeedTouch™ and/or your PC. Follow the instructions and enter the required information where needed. This information should be provided by your Service Provider. See “[1.3 SpeedTouch™ Configuration Setup](#)” on page 7.

- 5 In a final step all configurations are applied to the SpeedTouch™:



- 6 The SpeedTouch™ Setup Wizard appears again to announce that the configuration has been successful:



Click *Finish* to close the wizard.

Most configuration profiles will enable SpeedTouch™'s DHCP server - and a PC's Ethernet port is configured as DHCP client by default. Therefore, in most cases, no additional configuration of your PCs must be done if you want to enable multiple PCs on your local network for accessing the Internet via the SpeedTouch™.

**IP Addresses** Click this link to display the IP Addresses page.

This page allows you to view or add/delete specific IP address entries for SpeedTouch™'s interfaces:

IP address table			
Intf	Address/Netmask	Type	Translation
▶ eth0	169.254.236.102/16	Auto	none
▶ eth0	192.193.195.249/24	Auto	none
▶ eth0	10.0.0.138/24	User	none
▶ loop	127.0.0.1/8	Auto	none

Click 'New' to create a new entry.

[New](#) [Help](#)

To add an IP address for one of the SpeedTouch™ interfaces:

1 Click *New*.

IP address table			
Intf	Address/Netmask	Type	Translation
▶ eth0	169.254.236.102/16	Auto	none
▶ eth0	192.193.195.249/24	Auto	none
▶ eth0	10.0.0.138/24	User	none
▶ loop	127.0.0.1/8	Auto	none
• -	-	-	-

Specify following properties and click 'Apply' to commit.

**IP address properties:**

Interface:

Address/Mask:

Translation:

Obtain an IP address automatically

[Apply](#) [Clear](#) [Help](#)

- 2 In the *Interface* field, select the interface to which the IP address applies (use eth0 for assigning to the SpeedTouch™ Ethernet interface).
- 3 In the *Address/Mask* field, provide IP address and (sub)netmask in IP prefix notation (e.g. 192.6.11.150/24) or select *Obtain an IP address automatically* for assigning a dynamic IP address to the interface.
- 4 In the *Translation* field, select NAPT if you want to enable address translation on this IP address.
- 5 Click *Apply*
- 6 In the SpeedTouch™ web page, click *Save all* to save your changes to persistent memory.

**IP Routing** [Click this link to display the IP Routing page.](#)

This page allows you to view or add/delete static IP routes for SpeedTouch™'s IP router:

IP route table				
Destination	Label	Gateway	Intf	Metric
▶ 169.254.141.11/32	-	169.254.141.11	eth0	0
▶ 80.200.210.1/32	-	80.200.210.173	PPPoA_1	0
▶ 80.200.210.173/32	-	80.200.210.173	PPPoA_1	0
▶ 255.255.255.255/32	-	10.0.0.138	eth0	0
▶ 10.0.0.138/32	-	10.0.0.138	eth0	0
▶ 127.0.0.1/32	-	127.0.0.1	loop	0
▶ 10.0.0.0/24	-	10.0.0.138	eth0	0
▶ 169.254.0.0/16	-	169.254.141.11	eth0	0
▶ 224.0.0.0/4	-	10.0.0.138*	eth0	0
▶ default	-	192.193.195.254	eth0	1

Click 'New' to create a new entry.

[New](#) [Help](#)

Routing can be useful when subnetting your local network. To add a static IP route proceed as follows:

- 1 Click *New*.
- 2 Specify the destination IP address (use the prefix notation to apply a subnetmask), Gateway, Interface and Metric.
 

**Note** If applicable, you can also select a label for packet classified IP Routing.
- 3 Click *Apply* to add the entry to the table.
- 4 Click *Save all* to save your changes to persistent memory.

**NAPT** Clicking this button displays the Network Address and Port Translation (NAPT) page.

This page allows you to:

- View or add/delete specific static NAPT entries:

NAPT Entries		Multi-NAT Entries	Default Server	UPnP	
Nr	Type	Inside address	Outside address	Prot	State
▶ 1	Temp	10.0.0.254:500	unspecified:500	tcp	NONE
▶ 2	Temp	192.183.152.10:50	unspecified:20	tcp	NONE
▶ 3	Temp	192.193.195.92:50	unspecified:50	tcp	NONE
▶ 4	Temp	192.193.195.90:123	unspecified:123	tcp	NONE

Click 'New' to create a new entry.

[New](#) [Help](#)

To add static NAPT entries proceed as follows:

- 1 Click *New*.
- 2 Specify the outside address and inside address for the entry as well as the protocol and port to which the entry applies.

**Note** If the NAPT entry is applied to a connection's dynamically assigned local peer IP address, you should specify 0.0.0.0 as the outside address.

- 3 Click *Apply* to add the entry to the table.

You can also add static NAPT entries semi-automatically using the SpeedTouch™ NAPT Manager. For more information on NAPT Manager, see “4 SpeedTouch™ NAPT Manager” on page 51.

- View or add/delete Multi-NAT entries:

NAPT Entries		Multi-NAT Entries	Default Server	UPnP	
Index	intf	Type	Inside address	Outside address	
■ 64	pppoe_pppoe	Static (M)	10.0.0.1	213.233.196.97	
▶ 65	pppoe_pppoe	Static (M)	10.0.0.2	213.233.196.98	
▶ 66	pppoe_pppoe	Static (M)	10.0.0.3	213.233.196.99	
▶ 67	pppoe_pppoe	Static (M)	10.0.0.4	213.233.196.100	
▶ 68	pppoe_pppoe	Static (M)	10.0.0.5	213.233.196.101	

Click 'Delete' to remove the entry, 'Apply' to commit changes.

**Multi & Transparent NAT properties:**

Interface:

Inside IP:  Outside IP:

[New](#) [Help](#)

To add Multi-NAT entries proceed as follows:

- 1 Click *New*.
- 2 Specify the inside address and put the desired range between brackets e.g. 10.0.0.[1-10]. Specify the outside address and interface.
- 3 Click *Apply*.

- Define a default server:

By specifying a default server IP address (e.g. 10.0.0.154 as shown above), all incoming connections that don't match a specifically configured static NAPT entry will be forwarded to the device with this IP address. This setting should be adequate for most server applications and eliminates the need for specific static NAPT entries.

- Configure UPnP:

The three UPnP configuration options are:

- **Full:**  
The SpeedTouch™ is UPnP enabled, all local hosts are able to detect the SpeedTouch™. Any local host is able to create port mappings for any local device.
- **Secure (default):**  
The SpeedTouch™ is UPnP enabled, all local hosts are able to detect the SpeedTouch™. A local host is allowed to make port mappings for its own, i.e. a local host is not allowed to create port mappings for other local devices.
- **Off:**  
The SpeedTouch™ is UPnP disabled, none of the local hosts is able to detect the SpeedTouch™. Via UPnP no port mappings can be created.

**DHCP** Click this link to display the Dynamic Host Configuration Protocol (DHCP) page.

This page allows you to:

- Click the DHCP Server tab to access the DHCP server page.  
This page has three tabs:
  - Click the Server Config tab to enable/disable the SpeedTouch™ (Auto)DHCP server:

DHCP Server		DHCP Relay	DHCP Client
Server Config		Server Leases	Address Pools
Status			
DHCP server running			
Properties			
<input checked="" type="radio"/> DHCP Server			
<input type="radio"/> Auto DHCP		Client timeout (s)	<input type="text" value="10"/>
<input type="radio"/> No DHCP			
<a href="#">Apply</a>		<a href="#">Help</a>	

Depending on the DHCP server status, following Status may be shown:

- **Scanning for other DHCP server:**  
When the DHCP server and its Auto DHCP feature are enabled, during local network probing on the SpeedTouch™ Ethernet interface eth0.
- **DHCP server stopped:**  
When the DHCP server and its Auto DHCP feature are enabled, and a concurrent DHCP server was found during probing, thus causing its own DHCP server to be stopped and a DHCP client on the SpeedTouch™ Ethernet interface eth0 be created and activated.
- **DHCP server started:**  
When the DHCP server and its Auto DHCP feature are enabled, and no concurrent DHCP server was found during network probing, thus starting its own DHCP server on the SpeedTouch™ Ethernet interface eth0.
- **DHCP server running:**  
When the SpeedTouch™ DHCP server is enabled by default (without DHCP client)
- **DHCP client:**  
When SpeedTouch™ server is disabled by default, and a DHCP client is running on the SpeedTouch™ Ethernet interface eth0.
- **No DHCP:**  
When the SpeedTouch™ server is disabled by default and the SpeedTouch™ Ethernet interface eth0 IP address is statically assigned.



Under Properties you can select:

- **DHCP server:**  
To enable the SpeedTouch™ DHCP server. In addition, select the appropriate Auto DHCP
- **Auto DHCP (default):**  
The SpeedTouch™ will not start its DHCP server immediately, but will first probe the network for a possible concurrent DHCP server for some period of time (set by Client timeout in seconds). In case another DHCP server is found, the SpeedTouch™ DHCP server is not started, and a DHCP client will be created on its Ethernet interface instead. If no concurrent DHCP server is found, the SpeedTouch™ DHCP server is started.
- **No DHCP**  
To disable the SpeedTouch™ DHCP server. If it was running, it will be stopped immediately.
- Click the Server Leases tab to view the current leases provided by the SpeedTouch™ DHCP server.

DHCP Server		DHCP Relay		DHCP Client	
Server Config		Server Leases		Address Pools	
Lease	Client ID	Address	Pool	TTL	State
1	01:00:90:d0:01:88:2d	10.0.0.1	LAN_Private	01:58:48	used
2	01:00:50:04:48:7c:21	10.0.0.2	LAN_Private	01:59:14	used

[New](#)
[Help](#)

If needed, you can also manually add static DHCP leases for specific hosts or make dynamically assigned leases static by clicking *Lock*.

- Click the Address Pools tab to view the SpeedTouch™ DHCP server lease pool:

DHCP Server		DHCP Relay		DHCP Client	
Server Config		Server Leases		Address Pools	
Name	Start Address	End Address	Intf	State	PPP
LAN_private	10.0.0.1	10.0.0.254	eth0	static	-

**DHCP pool properties:**

Name:	<input type="text" value="LAN_private"/>	Interface:	<input type="text" value="eth0"/>
Start address:	<input type="text" value="10.0.0.1"/>	End address:	<input type="text" value="10.0.0.254"/>
Subnet mask:	<input type="text" value="255.255.255.0"/>	Lease time:	<input type="text" value="7200"/>
Gateway:	<input type="text" value="10.0.0.138"/>	Server:	<input type="text" value="10.0.0.138"/>
Primary DNS:	<input type="text" value="10.0.0.138"/>	Secondary DNS:	<input type="text" value="10.0.0.138"/>

[New](#)
[Apply](#)
[Delete](#)
[Help](#)

The SpeedTouch™ DHCP server (if enabled) will use the address pools listed in this table to provide IP addresses to requesting DHCP clients. If needed, you can add/delete DHCP address pools manually.

- Click the DHCP Relay tab to view the DHCP relay page. This page has two tabs:

- Click the Relay Config tab to view the current SpeedTouch™ DHCP relay status:

DHCP Server		DHCP Relay		DHCP Client	
Relay Config			Relay Interfaces		
Relay Server	Interface	Gateway Address			
▶ 127.0.0.1					
<a href="#">New</a>			<a href="#">Help</a>		

Via this table you can also manually add static SpeedTouch™ DHCP relay entries for specific interfaces, if applicable.

- Click the Relay Interfaces tab to view the SpeedTouch™ DHCP relay interfaces:

DHCP Server		DHCP Relay		DHCP Client	
Relay Config			Relay Interfaces		
Interface	Admin State	Oper State	Max Hops	Trusted	Remote ID
▶ PPPoA_1	down	down	4	no	
▶ eth0	up	up	4	no	
<a href="#">Help</a>					

- Click the DHCP Client tab to view the current SpeedTouch™ DHCP client status:

DHCP Server		DHCP Relay		DHCP Client	
Intf	Address	State	Timeout		
▶ eth0	-	bound	01:59:20		
<a href="#">New</a>			<a href="#">Help</a>		

Via this table, you can also manually add static SpeedTouch™ DHCP client entries for specific interfaces.

**DNS** Click this link to display the Dynamic Name System (DNS) page.

This page allows you to:

- View the current SpeedTouch™ DNS server hostname leases:

DNS Hostname Table		DNS Server Configuration
Nr	Hostname	Address
▶ 1	SpeedTouch	
▶ 2	Sascha2	10.0.0.1
▶ 3	MyPrinter	10.0.0.10
▶ 4	HomeServer	10.0.0.254

Click 'New' to create a new entry.

[New](#) [Help](#)

Via this table you can also add static DNS hostname entries.

This may be useful for devices which do not support DNS, e.g. a printer. By adding a name for your network printer, identified by its IP address, you will be able to contact this printer by name rather than by IP address.

- View and/or supply the SpeedTouch™ DNS domain name and to enable/disable the SpeedTouch™ DNS server:

DNS Hostname Table	DNS Server Configuration
Domain name: <input type="text" value="lan"/>	
<input checked="" type="checkbox"/> Activate server	

[Apply](#) [Help](#)

**Note** The use of DNS subdomains is supported, e.g. dsl.office.lan.

**System** Click this link to display the Configuration page.

This page allows you to:

- Back up the current SpeedTouch™ configuration, restore the SpeedTouch™ default configuration, or upload a saved configuration file:

Configuration	
Item	Description
Region	World
Provider	Basic
Service Name	Routed PPPoA - DHCP - NAPT
Service Description	Routed PPPoA Packet Service configuration using always-on session connectivity.
Last Configured	Configuration modified manually

Specify a configuration file to upload:

[Upload](#) [Backup](#) [Restore default](#) [Help](#)

- To backup the current configuration, click *Backup* and follow the instructions
- To restore the SpeedTouch™ defaults, click *Restore default* to load the default configuration.
- To upload and apply a SpeedTouch™ configuration file you've previously backed up, click *Browse* to go to the location where the SpeedTouch™ configuration file resides. Select the configuration file and click *Upload* to upload and apply the new configuration.

- View the current system software version, file name and the SpeedTouch™ board type:

System Software	
Item	Description
Version	4.2.0.0.1
File	shnt-c_AA.www
Board type	SHNT-C

- Check for the latest SpeedTouch™ software upgrades.

### System Password

Click this link to display the System Password page.

This page allows you to configure a system password to restrict access to the Speed-Touch™:

System Password	
Enter your password (max 16 chars):	
User id:	<input type="text" value="johndoe"/>
Password:	<input type="password" value="••••••••••"/>
Retype your password:	<input type="password" value="••••••••~"/>
<a href="#">Apply</a> <a href="#">Help</a>	

It is highly recommended that you configure a system password. To protect the Speed-Touch™ you should change the System password on a regular basis. However, never use an obvious password such as your name, date of birth, etc.

Enter User id and System password of your choice and re-enter your password in the appropriate field. Click *Apply* to apply the System password and *Save all* to save your changes to persistent memory.

### Templates

Click this link to display the Templates page.

This page allows you to:

- View the templates available for the embedded Easy Setup wizard:

Template Overview	
Filename	Service
▶ userorg.tpl	Routed PPPoA - DHCP - NAPT
▶ pppoe.tpl	Routed PPPoE - DHCP - NAPT
▶ pppoa.tpl	Routed PPPoA - DHCP - NAPT
▶ br.tpl	Bridged Ethernet

Select a template to view details

[Help](#)

- Upload new template files, e.g. from the SpeedTouch™ Setup CD-ROM (usually template files have the extension .tpl):

Template Upload	
Specify a template file to upload:	
<input type="text"/>	<input type="button" value="Browse..."/>
<a href="#">Upload</a>	

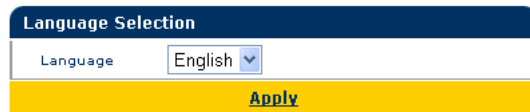
By uploading templates you can extend the number of services listed in the Easy Setup wizard.

**Note** Ask your Service Provider for more information about the use of templates.

---

[Language](#) Click this link to view the Language page.

This page allows you to select the SpeedTouch™ web page language.



The screenshot shows a web interface titled "Language Selection". It features a dropdown menu labeled "Language" with "English" selected. Below the dropdown is a yellow button labeled "Apply".

By default, the only available language is english.

Another language can be made available on the SpeedTouch™ web pages by running the SpeedTouch™ Setup wizard from the SpeedTouch™ Setup CD-ROM.

At the start of the setup procedure, select the desired language. When the setup procedure is finished, this language will have been enabled on your SpeedTouch™ and the language will be available on the SpeedTouch™ web pages (next to english).



## 4 SpeedTouch™ NAPT Manager

Introduction	The SpeedTouch™ NAPT Manager allows you to add static NAPT entries for specific applications.
Supported Operating Systems	<p>The NAPT Manager is only supported for following Microsoft Windows Operating Systems:</p> <ul style="list-style-type: none"> <li>• Windows 98</li> <li>• Windows 98SE</li> <li>• Windows ME</li> <li>• Windows NT4.0 SP6</li> <li>• Windows 2000</li> <li>• Windows XP</li> </ul>
Using SpeedTouch™ NAPT Manager	<p>The SpeedTouch™ NAPT Manager procedure consists of two major parts:</p> <ul style="list-style-type: none"> <li>• The detection procedure</li> <li>• The configuration procedure</li> </ul>

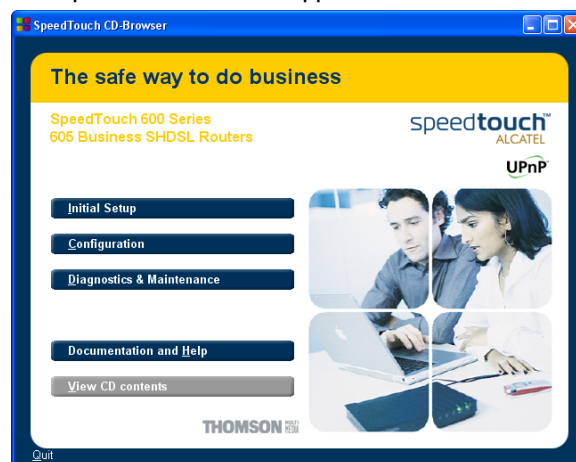
### The detection procedure

The detection procedure proceeds as follows:

- 1 Insert the SpeedTouch™ Setup CD-ROM in your computer's CD-ROM drive. The SpeedTouch™ CD Browser will start automatically.

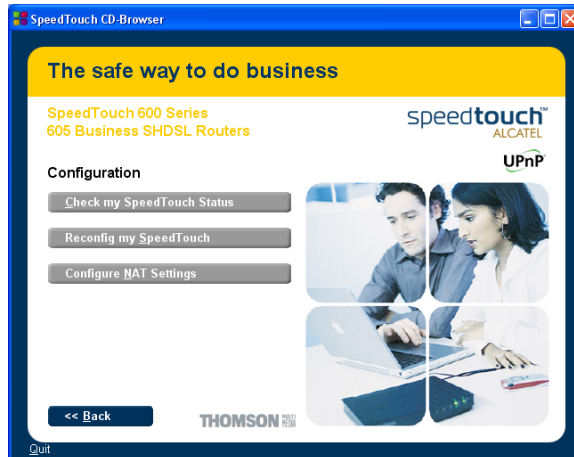
**Note** If the SpeedTouch™ CD Browser window does not appear automatically, click *Run* on the Start menu and enter the following path:  
*D:\Menu.exe* where D stands for the drive letter of your CD-ROM drive.

- 2 The SpeedTouch™ Menu appears:



Click *Configuration*.

3 The following window appears:



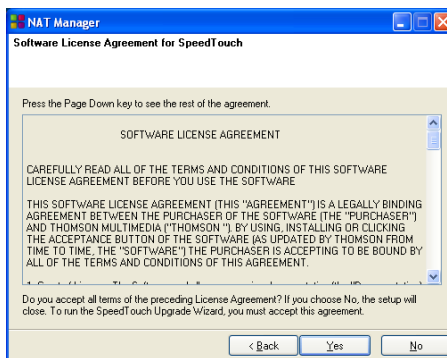
Click *Configure NAT Settings*.

4 The NAPT Manager window appears:



Click *Next*.

5 The Software License Agreement appears:

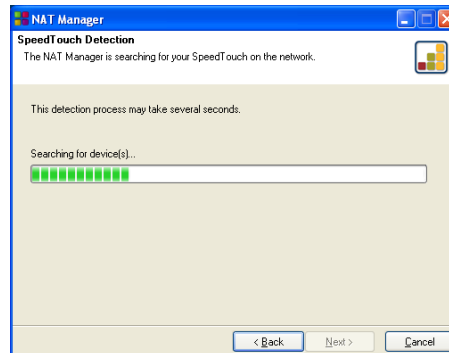


You must accept before continuing. Therefore click *Yes* to accept.

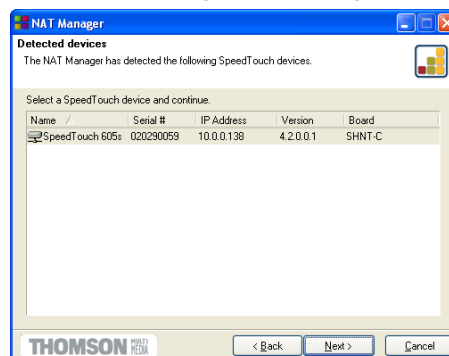
**Note** If you have already accepted this Software License Agreement in a previous session of NAPT Manager, this window will not be shown.



- 6 NAPT Manager will continue to search for the SpeedTouch™ on the network. The following window shows the detection progress:



- 7 The NAPT manager should find your SpeedTouch™ device on the local network. This is indicated by the following window:



In case more than one SpeedTouch™ device is found, a list with the different devices is shown. Select the SpeedTouch™ of your choice and click *Next*.

**Note** If the Setup wizard does not find any SpeedTouch™ on the network an error window pops up. In this case check that:

- the SpeedTouch™ is turned on and fully initialized.
- your PC is correctly connected to the SpeedTouch™ and has a valid IP address (i.e. any IP address but 0.0.0.0).
- no dedicated firewall device or router is placed between your PC and the SpeedTouch™
- no personal firewall software is running on your PC.

To repeat the search for the SpeedTouch™, click *Back* and proceed with step 6 of this procedure.

### The configuration procedure

Proceed as follows to add a static NATP entry using SpeedTouch™ NATP Manager:

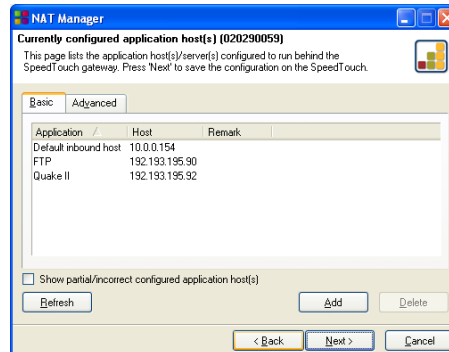
- 1 Once the SpeedTouch™ Setup wizard has detected your SpeedTouch™ device, you can proceed with the configuration procedure. If more than one SpeedTouch™ device is listed, select the appropriate one. Then, click *Next* to proceed.

**Note** If the SpeedTouch™ has been configured before:

- It may be protected by a system password. You must provide user name and system password before you can view the device details or continue with the configuration.

You will be asked to choose between reconfiguring your SpeedTouch™ or changing your Local Area Network configuration. Select the Reconfigure the SpeedTouch™ option and click *Next*

- 2 The following page lists the current application hosts:



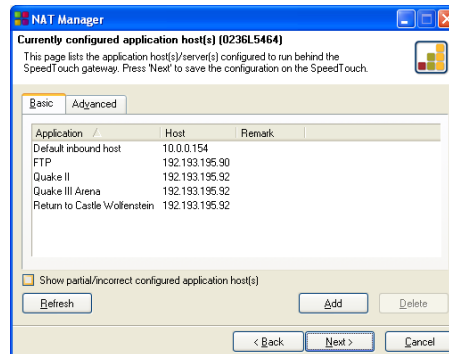
Click *Add* to enter a new application host.

- 3 The Add Port Mapping window appears. If you want to:

- Enter a port mapping for a specific application, click the **Basic** tab. Select an application in the Application list and enter a host IP address.
- Manually add a static NATP entries, click the **Advanced** tab. Select a protocol in the Protocol list and enter Port and Host IP address in the appropriate fields.
- Specify a default server IP address, click the **Default inbound host** tab. Enter the new IP address in the Host IP address field.

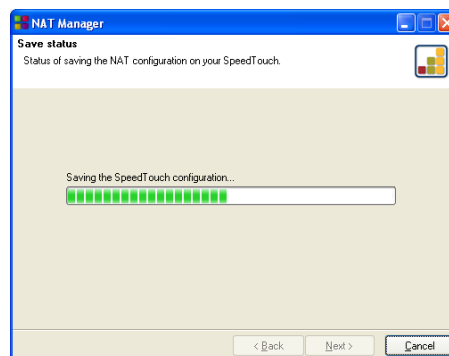
Click *Set* to add your entry to the list.

## 4 NAT Manager adds the NATP entry to the list:



Click *Next* to save the new entries.

## 5 NAT Manager saves the new NATP entries to persistent memory:



## 6 At the end of the procedure the following window appears:



Click *Finish* to quit NATP Manager.



## 5 SpeedTouch™ System Software Upgrade

**Introduction** The SpeedTouch™ products continue to evolve as extra and new functionalities are made available.

This chapter describes how to upgrade the SpeedTouch™ system software.

**System software updates (all OSs)**

You can check for system software upgrades via the SpeedTouch™ web pages.

See “[System](#)” on [page 47](#) for more information.

System software upgrades may also be available from your Service Provider. Please contact your Service Provider for more information.

**System software updates on a Windows platform**

If your computer runs a Microsoft Windows operating system you can access the SpeedTouch™ web site using the SpeedTouch™ CD Browser:

- 1 Insert the SpeedTouch™ Setup CD-ROM in your PC's CD-ROM drive. The SpeedTouch™ CD Browser will start automatically.

**Note** If the SpeedTouch™ CD Browser window does not appear automatically, open a Run window via Start > Run from the Start menu and enter the following path: *D:\Menu.exe*, where D stands for the drive letter of your CD-ROM drive.

- 2 Choose a language in the Choose Language window.

- 3 Click *Diagnostics & Maintenance* in the SpeedTouch™ CD Browser menu.

- 4 Click *Check for new System Software*.

- 5 Your web browser appears and loads the SpeedTouch™ upgrade web page.

Firmware upgrades may also be available from your Service Provider. Please contact your Service Provider for more information.

**Upgrade mechanisms**

Depending on your Operating System and specific requirements, following options are available to upgrade the SpeedTouch™ system software:

- In case you run an MS Windows Operating System or Mac OS X 10.1/10.2: For your convenience a SpeedTouch™ Upgrade wizard will guide you through the system software upgrade procedure. See “[5.1 The SpeedTouch™ Upgrade Wizard](#)” on [page 58](#) for more information.
- In case you run another Operating System, e.g. linux or Mac OS 8.6/9.x, or for extra information about advanced system software management: See “[5.2 Manual System Software Management via BOOTP Server](#)” on [page 62](#) for more information.

---

## 5.1 The SpeedTouch™ Upgrade Wizard

---

### Using the Upgrade Wizard

The procedure described in this section are valid only in case you run an MS Windows Operating System or Mac OS X 10.1/10.2.

During the upgrade procedure all configuration settings are backed up by the wizard and restored after upgrading the system software. Therefore, you do not need to back up the SpeedTouch™ configuration yourself.

---

### Before you start

Make sure that you have a valid SpeedTouch™ system software file available on a local disk or CD-ROM.

---

### System software upgrade procedure

Following procedure describes how to use the SpeedTouch™ Upgrade wizard from a PC running a MS Windows OS. For computers running Mac OS10 the behavior of the wizard is identical.

Proceed as follows:

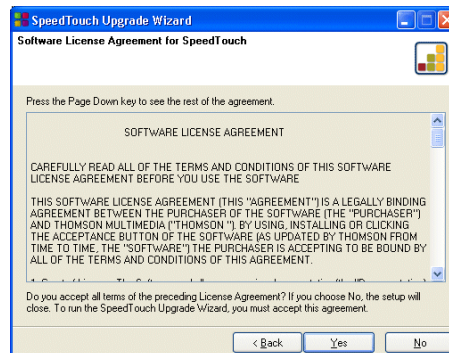
- I Insert the SpeedTouch™ Setup CD-ROM in your computer's CD-ROM drive.
  - MS Windows OSs  
The SpeedTouch™ CD Browser will start automatically:  
If the SpeedTouch™ CD Browser window does not appear automatically, open a 'Run' window via Start > Run from the Start menu and enter the following path: *D:\Menu.exe*, where D stands for the drive letter of your CD-ROM drive.  
The wizard prompts you to select a language. Select the language of your choice and click *OK*.  
To start the SpeedTouch™ Upgrade wizard, click *Diagnostics & Maintenance* and then click *Upgrade My SpeedTouch™*.
  - Mac OS10.1/10.2  
Open the CD-ROM and click *UpgradeST* to install the upgrade program.  
After installation, go to applications:SpeedTouch on the OS X partition and double-click *UpgradeST*.

- 2 The Welcome to the SpeedTouch™ Upgrade Wizard window appears:



Click *Next* to proceed.

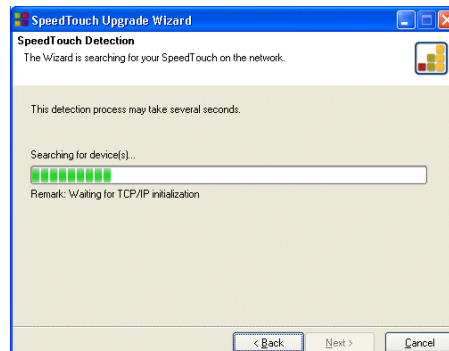
- 3 The SpeedTouch™ Software License Agreement window appears:



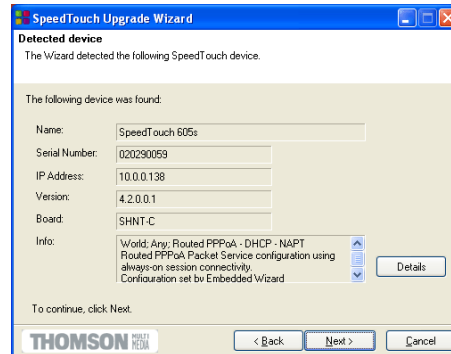
You must accept before continuing. Therefore click *Yes* to accept.

**Note** If you have already accepted this License Agreement in a previous upgrade, this window will not be shown.

- 4 The Setup wizard will continue to search for the SpeedTouch™ on the network. The following window shows the detection progress:



- 5 The Setup wizard should find your SpeedTouch™ device on the local network. This is indicated by the following window:



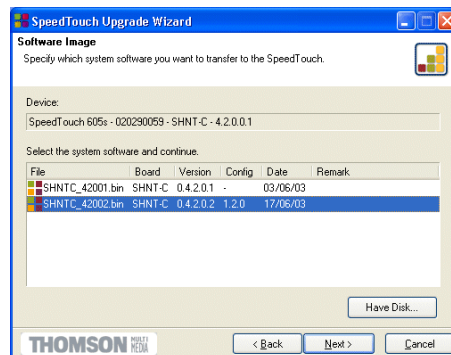
In case more than one SpeedTouch™ device is found, a listing is provided from which you can select your SpeedTouch™ from.

**Note** If the Setup wizard does not find any SpeedTouch™ on the network an error window pops up. In this case check:

- Whether the SpeedTouch™ is turned on and fully initialized.
- Whether your computer is correctly connected to the Speed-Touch™.
- Whether no dedicated firewall device or router is placed between your PC and the SpeedTouch™ and whether no personal firewall software is running on your PC.

To repeat the search for the SpeedTouch™, click *Back* and proceed with step 4 of this procedure.

- 6 Once the SpeedTouch™ Setup wizard has detected your SpeedTouch™ device you can proceed with the upgrade procedure. If more than one SpeedTouch™ device is listed, select the appropriate one. Then, click *Next* to proceed.
- 7 The following window shows current the firmware version active on the Speed-Touch™ as well as one or more firmware versions available on the CD-ROM.



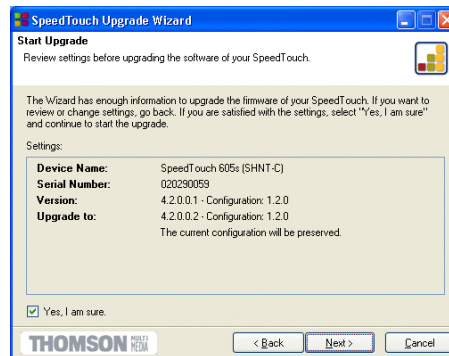
Select the appropriate firmware version and click *Next* to continue.

**Note** If the Service Provider has included a separate disk with dedicated upgrade system software, click *Have Disk* to navigate to the location of the appropriate file.

In case of a system software downgrade you must specifically acknowledge your decision before being able to proceed.

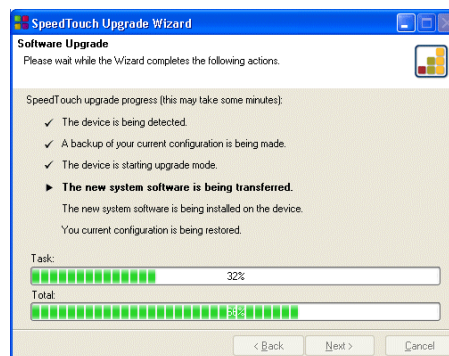


- 8 The following window allows you to overview your selection:

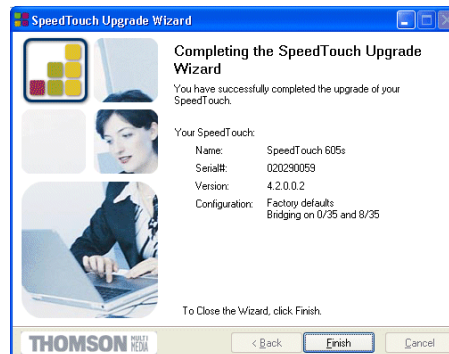


Click *Next* to continue.

- 9 You can follow the configuration progress in following window:



- 10 After upgrading the SpeedTouch™, a final window appears to announce that the upgrade has been successful:



Click *Finish* to close the wizard.

## 5.2 Manual System Software Management via BOOTP Server

### SpeedTouch™ system software management

The SpeedTouch™ system software is based on BOOTP, a standard mechanism used for booting diskless stations.

The SpeedTouch™ is able to slip in BOOTP mode, allowing a BOOTP server to manage the SpeedTouch™ file system, and submit upgrade files to it.

### Important note

It is recommended only to use the procedure described below in case you are familiar with the use of a BOOTP server, and the mechanisms on which BOOTP is based.

Upgrading the system software via the procedure described below will reset the SpeedTouch™ to its factory default settings. Therefore, prior to performing an upgrade of the system software it is recommended to back up the SpeedTouch™ configuration.

### Before you start

You need a third party BOOTP server installed on the computer from which you want to perform the SpeedTouch™ system software upgrade.

Make sure that the SpeedTouch™ is connected to your computer via its Ethernet port.

You will need the SpeedTouch™ Medium Access Control (MAC) address of your SpeedTouch™ device. To retrieve this address see “[System Information](#)” on page 34.

Make sure a valid SpeedTouch™ system software image file is available on your local disk.

### Procedure

To upgrade the SpeedTouch™ system software:

- 1 In a preliminary step, make sure that your SpeedTouch™ is powered off and that a BOOTP server is readily installed on the computer from which you intend to perform the system software upgrade.
- 2 Configure the BOOTP server to use the SpeedTouch™ system software image file in its reply to BOOTP requests from the SpeedTouch™ you want to upgrade.
- 3 To identify the BOOTP requests from the SpeedTouch™, you will need to specify its MAC address and define an IP range for basic communication between the BOOTP server and the SpeedTouch™.
- 4 Use a pencil to press and hold the Defaults button at the back of the SpeedTouch™:



- 5 While holding the Defaults button, power on the SpeedTouch™ and keep holding the Defaults button until the Power/System, Line Tx and Line Rx LEDs lit green (approximately six seconds). This indicates that the SpeedTouch™ entered BOOTP mode and is sending BOOTP requests.
- 6 The BOOTP server will reply to the BOOTP requests and will perform the required operations to send the system software to the SpeedTouch™.
- 7 After checking whether the received system software is valid for the device, the SpeedTouch™ will start in normal operational mode to complete the upgrade.
- 8 Optionally, you can upload the backup configuration as described in “System” on page 47.



## 6 Troubleshooting

---

**Introduction** This chapter provides information on how to identify and correct some common problems you may encounter when using and configuring the SpeedTouch™.

If the following troubleshooting tips do not resolve the problem contact the company from which you purchased the SpeedTouch™ for assistance.

## 6.1 General

### Configuration problems

If you encounter DSL connectivity problems due to misconfiguration, you might consider a hardware reset to factory defaults (as described further in this chapter).

However, please note that resetting the SpeedTouch™ to its factory settings will revoke all the changes you made to the configuration.

### Dr SpeedTouch™

Dr SpeedTouch™ enables you to test your computer and SpeedTouch™ connectivity via its Diagnostics wizard. The SpeedTouch™ Troubleshoot will report what is wrong with your connection.

For more information on Dr SpeedTouch™ see “1.4 Dr SpeedTouch™ Installation” on page 17.

### Troubleshooting table

Following table may help you determine the nature of the problem, and provides some plausible solutions:

Problem	Solution
SpeedTouch™ does not work. (none of the LEDs light up)	Make sure that the SpeedTouch™ is plugged into an electrical outlet.
	Make sure that you are using the correct power supply for your SpeedTouch™ device.
LAN LED does not light up. Link integrity/Activity LED of Ethernet port does not light up.	Make sure that the cables are securely connected to the 10/100Base-T port.
	Make sure that you are using the correct cable type for your Ethernet equipment.
	Make sure the computer's Ethernet port is configured for auto-negotiation.
No UPnP.	Make sure UPnP is installed on your PC if you are running Microsoft Windows XP.
	Your computer doesn't support UPnP if you run an operating system other than Microsoft Windows XP.
	Make sure that UPnP is not turned off in the SpeedTouch™.
No Line synchronization achieved. Line sync LED off or flashing.	Make sure that SHDSL service is enabled on the telephone line the SpeedTouch™ is connected to.
	Make sure that the correct SpeedTouch™ variant is used for your DSL service.

---

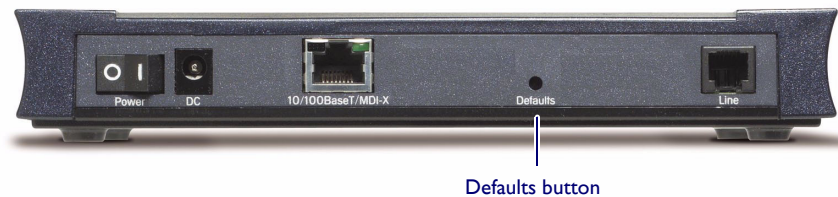
## 6.2 SpeedTouch™ Default Configuration

---

### Reset to default configuration

Proceed as follows to perform a hardware reset to factory defaults:

- 1 Make sure the SpeedTouch™ is powered on.
- 2 Use a pencil to press the Defaults button at the back of the SpeedTouch™ until all the LEDs on the front panel start flashing.



- 3 Release the button. The SpeedTouch™ reboots and will come online again with factory defaults.

### User configuration profile

When you reset the SpeedTouch™ to its factory defaults, all the configuration profile settings you might have changed will be deleted. It may be necessary to:

- reconfigure the system by using the SpeedTouch™ Setup wizard
- or
- upload the relevant configuration file. See “1.3 SpeedTouch™ Configuration Setup” on page 7 for more information.

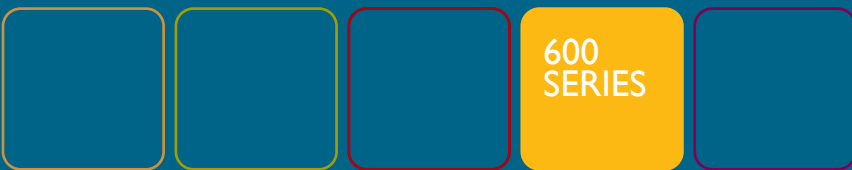








[www.speedtouch.com](http://www.speedtouch.com)



Built for excellence

speedtouch™

## Free Manuals Download Website

<http://myh66.com>

<http://usermanuals.us>

<http://www.somanuals.com>

<http://www.4manuals.cc>

<http://www.manual-lib.com>

<http://www.404manual.com>

<http://www.luxmanual.com>

<http://aubethermostatmanual.com>

Golf course search by state

<http://golfingnear.com>

Email search by domain

<http://emailbydomain.com>

Auto manuals search

<http://auto.somanuals.com>

TV manuals search

<http://tv.somanuals.com>