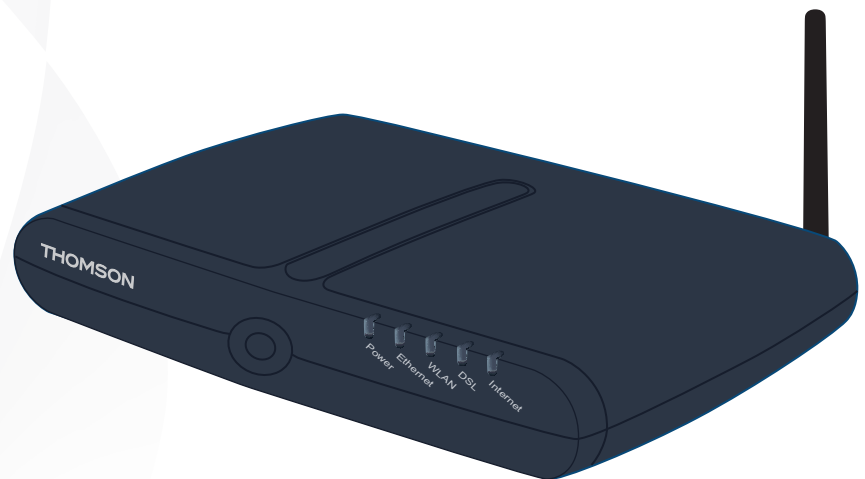


**THOMSON**  
*images & beyond*



# **THOMSON ST585 v6**

## **Setup and User Guide**



# THOMSON ST585 v6

## Setup and User Guide

## Copyright

Copyright ©1999-2008 Thomson. All rights reserved.

Distribution and copying of this document, use and communication of its contents is not permitted without written authorization from Thomson. The content of this document is furnished for informational use only, may be subject to change without notice, and should not be construed as a commitment by Thomson. Thomson assumes no responsibility or liability for any errors or inaccuracies that may appear in this document.

Thomson Telecom Belgium  
Prins Boudewijnlaan, 47  
B-2650 Edegem  
Belgium

<http://www.thomson-broadband.com>

## Trademarks

The following trademarks may be used in this document:

- > DECT is a trademark of ETSI.
- > Bluetooth® word mark and logos are owned by the Bluetooth SIG, Inc.
- > Ethernet™ is a trademark of Xerox Corporation.
- > Wi-Fi®, WMM® and the Wi-Fi logo are registered trademarks of the Wi-Fi Alliance®. "Wi-Fi CERTIFIED", "Wi-Fi ZONE", "Wi-Fi Protected Access", "Wi-Fi Multimedia", "Wi-Fi Protected Setup", WPA, WPA2" and their respective logos are trademarks of the Wi-Fi Alliance®.
- > UPnP™ is a certification mark of the UPnP™ Implementers Corporation.
- > Microsoft®, MS-DOS®, Windows®, Windows NT® and Windows Vista® are either registered trademarks or trademarks of Microsoft Corporation in the United States and/or other countries.
- > Apple® and Mac OS® are registered trademarks of Apple Computer, Incorporated, registered in the United States and other countries.
- > UNIX® is a registered trademark of UNIX System Laboratories, Incorporated.
- > Adobe®, the Adobe logo, Acrobat and Acrobat Reader are trademarks or registered trademarks of Adobe Systems, Incorporated, registered in the United States and/or other countries.

Other brands and product names may be trademarks or registered trademarks of their respective holders.

## Document Information

Status: v1.0 (September 2008)

Reference: E-DOC-CTC-20080627-0003

Short Title: Setup and User Guide ST585 v6 R8.2 (en)

<b>About this Setup and User Guide .....</b>	<b>1</b>
<b>1 Installation.....</b>	<b>3</b>
1.1 Preliminary Steps .....	4
1.2 Installing your Thomson Gateway .....	5
1.2.1 Guided Installation .....	6
1.2.2 Manual Installation .....	8
<b>2 Thomson Gateway Basics .....</b>	<b>9</b>
2.1 Thomson Gateway LED Behaviour .....	10
2.1.1 Status LEDs .....	11
2.1.2 Ethernet LEDs .....	13
2.2 Thomson Gateway Web Interface .....	14
2.3 Backing Up/Restoring your Configuration .....	17
<b>3 Adding a New Computer to your Network.....</b>	<b>19</b>
3.1 Connecting a Computer Using the Ethernet Cable .....	20
<b>4 Wireless .....</b>	<b>21</b>
4.1 Connecting Your Wireless Client .....	22
4.2 Securing Your Wireless Connection.....	23
4.2.1 Configuring WPA-PSK Encryption .....	25
4.2.2 Configuring WEP Encryption .....	26
<b>5 Getting the Most Out of Your Thomson Gateway .....</b>	<b>27</b>
5.1 Universal Plug and Play .....	28
5.1.1 Accessing Your Thomson Gateway with UPnP .....	29
5.1.2 Managing your Internet connection with UPnP.....	30
5.1.3 Configuring UPnP on the Thomson Gateway .....	32
5.1.4 Installing UPnP on Windows XP .....	33
5.2 Assigning a service (HTTP, FTP,...) to a computer .....	35
5.3 Dynamic DNS .....	37

---

<b>6</b>	<b>Internet Security .....</b>	<b>39</b>
<b>6.1</b>	<b>Firewall.....</b>	<b>40</b>
<b>6.2</b>	<b>Web Site Filtering.....</b>	<b>41</b>
6.2.1	Adding Rules For The Address Based Filter.....	42
<b>7</b>	<b>Troubleshooting .....</b>	<b>45</b>
<b>7.1</b>	<b>Setup wizard Troubleshooting .....</b>	<b>46</b>
<b>7.2</b>	<b>General Thomson Gateway Troubleshooting .....</b>	<b>47</b>
7.2.1	Wired Connection Troubleshooting.....	48
7.2.2	Wireless Connection Troubleshooting .....	49
<b>7.3</b>	<b>Reset to Factory Defaults .....</b>	<b>50</b>

## About this Setup and User Guide

### Used Symbols



A **note** provides additional information about a topic.



A **caution** warns you about potential problems or specific precautions that need to be taken.

### Terminology

Generally, the THOMSON ST585 v6 will be referred to as Thomson Gateway in this Setup and User Guide.

### Typographical Conventions

Following typographical convention is used throughout this manual:

- > **Sample text** indicates a hyperlink to a Web site.  
Example: For more information, visit us at [www.thomson-broadband.com](http://www.thomson-broadband.com).
- > **Sample text** indicates an internal cross-reference.  
Example: If you want to know more about guide, see "1 Introduction" on page 7".
- > **Sample text** indicates an important content-related word.  
Example: To enter the network, you **must** authenticate yourself.
- > **Sample text** indicates a GUI element (commands on menus and buttons, dialog box elements, file names, paths and folders).  
Example: On the **File** menu, click **Open** to open a file.

### Documentation and software updates

Thomson continuously develops new solutions, but is also committed to improving its existing products.

For more information on Thomson's latest technological innovations, documents and software releases, visit us at <http://www.thomson-broadband.com>.





# 1 Installation

## Introduction

In a few minutes you will be able to access the Internet using your Thomson Gateway.

This Setup and User Guide will show you how to set up your Thomson Gateway and how to connect your computer(s) to the Internet.

## 1.1 Preliminary Steps

### DSL service

The DSL service must be up and running on your telephone line.

If both conventional telephone and DSL service are simultaneously available from the same copper pair, you will need a central splitter or distributed filters for decoupling DSL and telephone signals.



Public telephone lines carry voltages that can cause electric shock. Only try to set up splitter/filters that have been designed to be installed by unqualified personnel. For further assistance, contact your Internet Service Provider.

### Computer requirements

- > To connect a computer via Ethernet, make sure the computer is equipped with an Ethernet Network Interface Card (NIC).
- > For wireless networking, you will need a WiFi-certified wireless client adapter for each computer you want to connect wirelessly.

### Internet connection details

You may need the following connection details from your Internet Service Provider (ISP):

- > Your ISP's method for connecting to the Internet (for example PPPoE)
- > The VPI/VCI (for example 8/35)
- > Your user name and password to connect to the Internet for PPP connections
- > Your IP settings in case of static configurations



Optionally your ISP may indicate the Service Profile to use during Setup.

You may have received this information when you subscribed at your Internet Service Provider. You may be prompted for this information at a given step in the installation procedure.

## 1.2 Installing your Thomson Gateway

### Installation methods

There two ways to set up your Thomson Gateway:

- > Guided Installation
- > Manual Installation

### Guided Installation

#### *How it works*

The Setup wizard included on the CD will guide you through all configuration aspects of your Thomson Gateway. This is the recommended way to install your Thomson Gateway.

#### *Requirements*

- > Your computer must run one of the following operating systems:
  - Microsoft Windows Vista (SP1) or higher
  - Microsoft Windows Vista x64 (SP1) or higher
  - Microsoft Windows XP SP2 or higher
  - Microsoft Windows XP x64 SP 1 or higher
  - Microsoft Windows 2000 SP4
  - Mac OS X 10.4 (Tiger)
  - Mac OS X 10.5 (Leopard)
- > You must have administrative rights on your computer

#### *Getting started*

Proceed with "1.2.1 Guided Installation" on page 6.

### Manual Installation

#### *How it works*

The Setup and User Guide will first help you to connect your computer to the Thomson Gateway. After this is done, you can configure your Thomson Gateway using your web browser.

#### *Requirements*

Javascript must be enabled on your web browser.

#### *Getting started*

Proceed with "1.2.2 Manual Installation" on page 8.

## 1.2.1 Guided Installation

### Connecting devices: wait!

Do not plug in any cables or connect any devices until you are prompted to do so by the wizard.

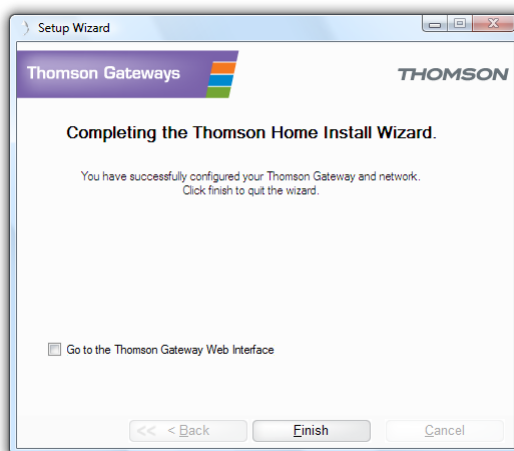
### In case of problems

If you encounter problems during this installation please refer to "7.1 Setup wizard Troubleshooting" on page 46.

### Starting the wizard

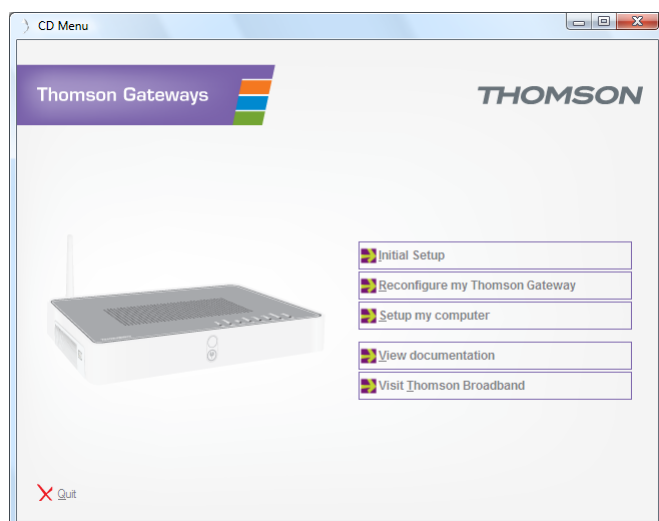
To start the wizard:

- 1 Insert the Setup CD into your computer's CD- or DVD-ROM drive.
- 2 If your computer runs:
  - Microsoft Windows: The CD should autostart.
  - Mac OS X: Double-click **Menu** in the window with the content of the CD.
- 3 Select the language of your choice and click **OK**.
- 4 The Setup wizard will now guide you through the installation.
- 5 At the end of the installation, following screen appears:



- 6 Select the [Go to the Thomson Gateway Web Interface](#) if you want to go to the Thomson Gateway Web Interface after closing the wizard. On the Thomson Gateway Web Interface, you can further configure your Thomson Gateway.
- 7 Click **Finish**.
- 8 The **CD menu** appears.

### CD menu



On the **CD Menu**, click:

- > **Initial Setup** to connect your computer to the Thomson Gateway and configure it.
- > **Reconfigure my Thomson Gateway** to reconfigure your Thomson Gateway.
- > **Setup my computer** to connect your computer to the Thomson Gateway network.
- > **View Documentation** to view the documentation that is available for your Thomson Gateway. This list will be automatically updated if you are connected to the Internet.
- > **Visit Thomson Broadband** to visit the online support sections on [www.thomson-broadband.com](http://www.thomson-broadband.com).



Actual available items may depend on the Setup CD delivered with your Thomson Gateway.

## 1.2.2 Manual Installation

### Procedure

Proceed as follows:

- 1 Connect the cables
- 2 Configure the Thomson Gateway

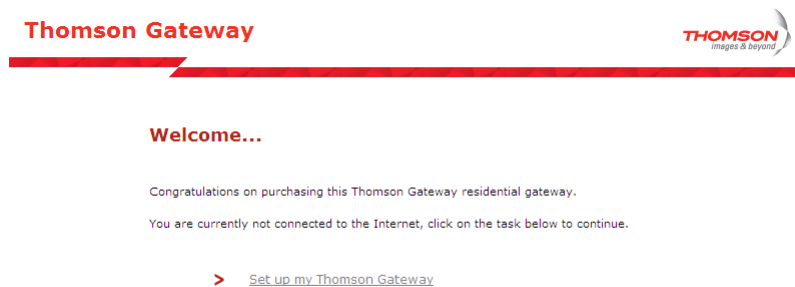
### Connect the cables

Proceed as follows:

- 1 Connect your computer to the Thomson Gateway as described in “3 Adding a New Computer to your Network” on page 19.
- 2 Connect the Thomson Gateway to the DSL line.
- 3 Connect the power supply.
- 4 Turn on the Thomson Gateway.

### Configure the Thomson Gateway

- 1 Open your web browser.
- 2 The Thomson Gateway informs you that you have not yet configured your Thomson Gateway.



If this window does not appear browse to <http://dsldevice.lan> or to the IP address of your Thomson Gateway (by default: [192.168.1.254](http://192.168.1.254)) and click **SpeedTouch** on the menu on the left-hand side.

- 3 Click **Setup my Thomson Gateway**.
- 4 The **Easy Setup** wizard appears. This wizard will guide you through the configuration of your Thomson Gateway. Click **Next** and follow the instructions.

## 2 Thomson Gateway Basics

### In this chapter

Topic	Page
Thomson Gateway LED Behaviour	10
Thomson Gateway Web Interface	14
Backing Up/Restoring your Configuration	17

## 2.1 Thomson Gateway LED Behaviour

### Content

This chapter describes the behaviour of:

- > Status LEDs
- > Ethernet LEDs



## 2.1.1 Status LEDs

### Introduction

On the front panel of your Thomson Gateway, you can find a number of status LEDs, indicating the state of the device during normal operation.

### Power LED

Colour	State	Description
Green	Solid on	Power on, normal operation
Red	Solid on	Power on, self-test failed, indicating device malfunction
Amber	Blinking	Bootloader active (during upgrade)
Off		Power off

### Ethernet LED

Colour	State	Description
Green	Blinking	Ethernet activity
	Solid on	Ethernet connection, no activity
Off		No Ethernet connection

### DSL LED

Colour	State	Description
Green	Blinking	Pending DSL line synchronisation
	Solid on	DSL line synchronised
Off		No DSL line

## Internet LED

Colour	State	Description
Green	Blinking	Internet activity
	Solid on	Internet connectivity, no activity
Red	Solid on	Internet connection setup failed
Off		No Internet connection

## 2.1.2 Ethernet LEDs

### Ethernet LED

A LED may be provided per Ethernet port to indicate link integrity (or activity).

LED Status	Description
Off	No connection on this port
Solid on	Ethernet link up
Blinking	Data is flowing from/to this port

## 2.2 Thomson Gateway Web Interface

### Introduction

The Thomson Gateway Web Interface allows you to configure your Thomson Gateway using your web browser.

### Requirements

Javascript must be enabled on your browser. For more information, consult the help of your Internet browser.

### Accessing the Thomson Gateway Web Interface

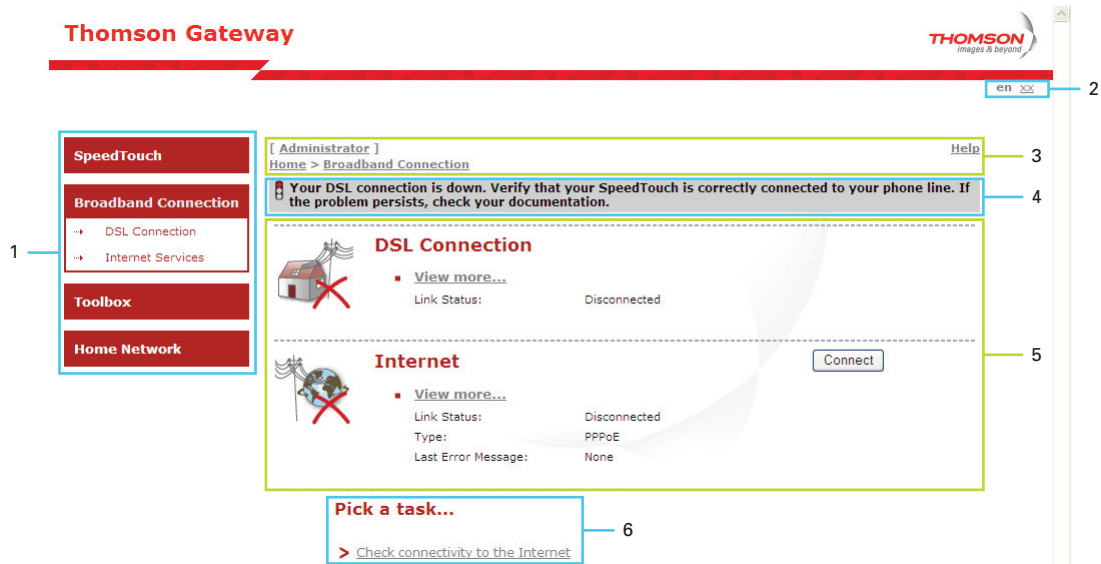
Proceed as follows:

- 1 Open your web browser.
- 2 Browse to <http://dsldevice.lan> or to the IP address of your Thomson Gateway (by default: [192.168.1.254](http://192.168.1.254)).
- 3 If you have protected your Thomson Gateway with a user name and password, the Thomson Gateway will prompt you to enter these. Enter your user name and password and click **OK**.
- 4 The Thomson Gateway Web Interface appears.

If your computer runs Windows Vista or Windows XP, you can also access the Thomson Gateway Web Interface using the Internet Gateway Device icon. For more information, see "5.1 Universal Plug and Play" on page 28.

### Components

All the pages contain following components:



Label	Description
1	Menu
2	Language bar
3	Navigation bar
4	Notification area
5	Content pane
6	Tasks

### Menu

The menu consists of the following menu items:

- > **SpeedTouch:**  
Provides basic information on the Thomson Gateway.
- > **Broadband Connection:**  
Allows you to view/configure your broadband connections.
- > **Toolbox:**  
Allows you to assign games or applications to a device and secure your Internet connection.
- > **Home Network:**  
Allows you to manage your local network.

## Language bar

The language bar allows you to change the language of the Thomson Gateway Web interface.



The language bar will only be shown if more than one language is available.

## Navigation bar

The navigation bar is located at the top of the page and allows you to:

- > View the current user name. Click this name to change your password or switch to another user.
- > View the current position on the Thomson Gateway Web interface.
- > Select change the display level of the page (for example: Overview, Details or Configure)
- > Get context-related Help information.

## Notification area

The notification area is used to display:

- > Error messages, indicated by a red traffic light.
- > Warnings, indicated by an orange traffic light.
- > Information, indicated by a green traffic light.



If none of these events occur, the notification area will not be shown.

## Content pane

The content pane displays the information and configurable items of the selected topic.

## Tasks

To allow a quick configuration of your Thomson Gateway, some pages may offer you a number of related tasks in the **Pick a task** list. These tasks will guide you to the page where you can perform the selected task.

## 2.3 Backing Up/Restoring your Configuration

### Introduction

Once you have configured your Thomson Gateway to your needs, it may be a good idea to backup your configuration for later use. This way you can always return to your working configuration in case of problems.

### Backing up your configuration

Proceed as follows:

- 1 Browse to the Thomson Gateway Web Interface.
- 2 On the **SpeedTouch** menu, click **Configuration**.
- 3 In the **Pick a task** list, click **Save or Restore Configuration**.
- 4 Under **Backup current configuration**, click **Backup Configuration Now**.
- 5 The Thomson Gateway prompts you to save your file.
- 6 Save your file to a location of your choice.

### Restoring your configuration

Proceed as follows:

- 1 Browse to the Thomson Gateway Web Interface.
- 2 On the **SpeedTouch** menu, click **Configuration**.
- 3 In the **Pick a task** list, click **Save or Restore Configuration**.
- 4 Under **Restore saved configuration**, click **Browse**.
- 5 Open your backup file.
- 6 The Thomson Gateway restores your configuration.



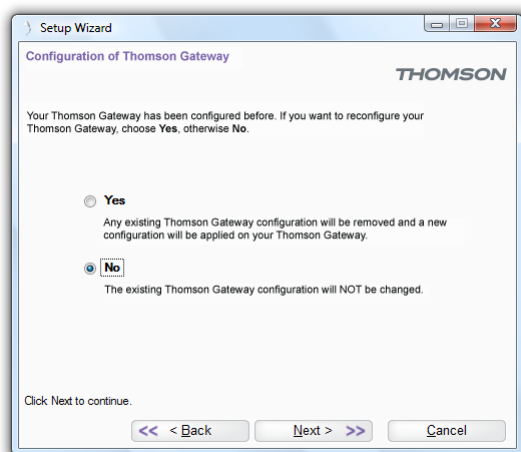


### 3 Adding a New Computer to your Network

#### Guided Installation

If you configured your Thomson Gateway using the Guided Installation, use the same procedure on the computer that you want to add.

At a specific point in the installation, the Setup wizard will inform you that the Thomson Gateway has already been configured:



Select **No** and click **Next** to continue.

#### Manual Installation

If you want to connect your computer to the Thomson Gateway using:

- > A Wireless connection, continue with "4 Wireless" on page 21.
- > The Ethernet cable, continue with "3.1 Connecting a Computer Using the Ethernet Cable" on page 20.

## 3.1 Connecting a Computer Using the Ethernet Cable

### Requirements

- > Your computer must have a free Ethernet port.
- > Your computer must be configured to obtain an IP address automatically. This is the default setting.

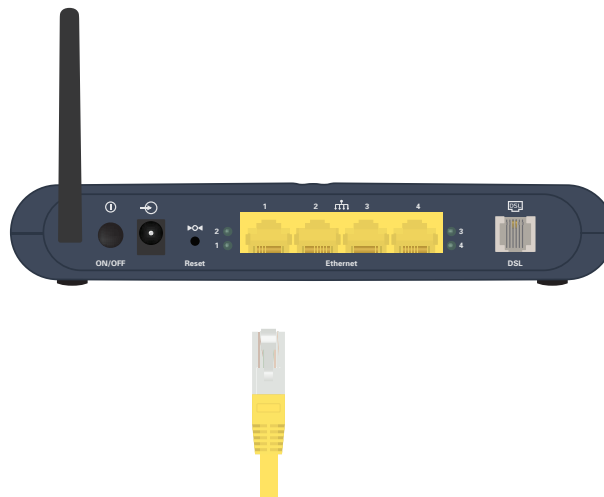
### Ethernet cable

In your package, you will find a cable with yellow connectors. This is the Ethernet cable.

### Procedure

Proceed as follows:

- 1 Connect one end of the Ethernet cable to (one of the) yellow Ethernet port(s) of your Thomson Gateway:



- 2 Connect the other end of the Ethernet cable to your computer.
- 3 Your computer is now connected to your network. No additional configuration is needed.

## 4 Wireless

### Introduction

With the built-in wireless access point you are no longer bound by cables to connect to the Internet.

### What you need to set up a wireless network

To set up a wireless network, you need following components

- > A Wireless Access Point
- > A Wireless client

### Wireless Access Point

You can consider the wireless access point as the heart of your wireless network. The wireless access point:

- > Connects the different wireless devices with each other.
- > Secures the data sent over wireless connection.

The Thomson Gateway comes with an integrated wireless access point. The only thing you need is a wireless client.

### Wireless client

The wireless client allows you to connect a device, typically a computer, to a wireless access point. Both built-in and external (for example via USB) are available.

Check the documentation of your computer if you are not sure if your computer is equipped with a wireless client

### Configuring your wireless clients

Before you can start surfing the internet with a wireless connection, you must first connect your wireless client to your wireless access point: the Thomson Gateway.

For more information, see "4.1 Connecting Your Wireless Client" on page 22.

### Secure your wireless connection!

Because you no longer need a physical connection, everyone who is within the range of your Thomson Gateway can access your network. This means that your neighbour can easily use your connection without you knowing it or that hackers can use your connection to hack into other computers.

You can easily prevent this by securing your wireless connection. For more information, see "4.2 Securing Your Wireless Connection" on page 23.

## 4.1 Connecting Your Wireless Client

### Before you start

Before you can connect a computer to your wireless network you need to know which Network Name (SSID) and encryption your Thomson Gateway is using.

### Where can I find the SSID?

If you did not change the SSID manually, your Thomson Gateway uses the SSID that is printed on the bottom panel label of your Thomson Gateway.

### Where can I find the encryption?

#### *You have not yet configured your Thomson Gateway*

In this case, no encryption is used.

#### *You have already configured your Thomson Gateway using the Guided Installation*

If you choose to use the wireless settings proposed by the Setup wizard, you can find the encryption key/passphrase on the label on the bottom of your Thomson Gateway.

### Forgot your wireless settings?

If you have changed the wireless settings manually and you can't remember your settings, try one of the following:

If one of your computers is already connected to your network:

- 1** Browse to the Thomson Gateway Web Interface on a computer that is already connected to your network.
- 2** On the **Home Network** menu, click **Wireless**.
- 3** In the upper-right corner, click **Details**.
- 4** The wireless Access Point page appears. Under:
  - **Configuration**, you can find the network name (SSID).
  - **Security**, you can find the encryption.

If none of your computers is connected to your network, connect a computer using a wired connection and follow the procedure above to find out what your wireless settings are.

Another option is to reset your Thomson Gateway and reconfigure it all over again. For more information, see "7.3 Reset to Factory Defaults" on page 50.

### Procedure

Configure your computer with the same wireless settings as your Thomson Gateway. For more information, consult the help of your wireless client.

## 4.2 Securing Your Wireless Connection

### Introduction

By using encryption, communication between the wireless clients and your Thomson Gateway is protected by a passphrase. Only clients which use the correct network name (SSID) and passphrase can connect to your network.

### Encryption methods

During the years a number of encryption types have been developed. The list below gives you an overview of the supported encryption types ordered by security level, you will find the highest level of security at the top of the list:

- > **WPA-PSK Encryption:**  
The wireless data is being encrypted with a user-defined key. Wireless clients must be configured with this key before they can connect to the Thomson Gateway.
- > **WEP Encryption:**  
The first encryption type used for wireless connections. Like WPA-PSK it uses a user-defined key, but WEP has been proven to have some security issues. We strongly recommend you to use WPA-PSK instead.

### WPA-PSK versions

The Thomson Gateway supports the following WPA-PSK versions:

- > **WPA2** (also referred to as WPA2-PSK):  
WPA2 is the most secure version, but not all wireless clients already support it. Before you select this version, make sure all of your wireless clients support it.
- > **WPA+WPA2:**  
If not all of your wireless clients support WPA2 or you are not sure if they support WPA2, we recommend you to choose WPA+WPA2. Wireless clients that support WPA2 will use WPA2, the others will use WPA.
- > **WPA:**  
If none of your wireless clients support WPA2 choose this option.



To use WPA2 on Windows XP Service Pack 2 (SP2) you first have to install Wi-Fi Protected Access 2 (WPA2)/Wireless Provisioning Services Information Element (WPS IE) update or install SP3.

You can find the WPS IE update on <http://support.microsoft.com/kb/917021>.

### Which encryption method should I use?

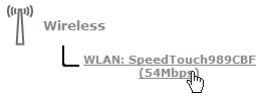
We strongly recommend you to **use the highest level** of encryption that is supported by all your wireless clients.

### Configuring the wireless encryption

Proceed as follows:

- 1** Open the Thomson Gateway Web Interface.
- 2** On the left menu, click **Home Network**.

- 3 Under **Wireless**, click your access point.




Your access point will be listed in the following format: "WLAN:<Network Name> (<Actual Speed>)". For example, **WLAN: SpeedTouch83C7C7 (54Mbps)**.

- 4 The **Wireless Access Point** page appears.
- 5 In the Navigation bar, click **Configure**.
- 6 Under **Security**, you can change the **Encryption**. If you want to use:
- WPA-PSK Encryption, continue with "4.2.1 Configuring WPA-PSK Encryption" on page 25.
  - WEP Encryption, continue with "4.2.2 Configuring WEP Encryption" on page 26.

## 4.2.1 Configuring WPA-PSK Encryption

### Procedure

Continuing from “ Configuring the wireless encryption”:

- 1** Select **Use WPA-PSK Encryption**.
  - 2** In the **WPA-PSK Encryption Key** box, type a pass phrase (also known as Pre-shared key) of your choice. The pass phrase must consist of 8 to 63 alphanumeric characters or 64 hexadecimal characters (characters from 0 to 9 and from A to F).
  - 3** In the **WPA-PSK Version** list, click the WPA-version of your choice. Following options are available:
    - **WPA2:**  
WPA2 is the most secure version, but not all wireless clients already support it. Before you select this version, make sure all of your wireless clients support it.
    - **WPA+WPA2:**  
If not all of your wireless clients support WPA2 or you are not sure if they support WPA2, we recommend you to choose WPA+WPA2. Wireless clients that support WPA2 will use WPA2, the others will use WPA.
    - **WPA:**  
If none of your wireless clients support WPA2 choose this option.
-  To use WPA2 on Windows XP Service Pack 2 (SP2) you first have to install Wi-Fi Protected Access 2 (WPA2)/Wireless Provisioning Services Information Element (WPS IE) update or install SP3.  
You can find the WPS IE update on <http://support.microsoft.com/kb/917021>.
- 4** Click **Apply**.
  - 5** Configure your wireless client(s) with the same settings.

## 4.2.2 Configuring WEP Encryption

### Procedure

Continuing from “Configuring the wireless encryption”:

- 1** Select **Use WEP Encryption**
- 2** In the **WEP Key Length** list, click the desired key length (a higher key length offers higher security).
- 3** In the **Encryption key** box, type a Network key of your choice. If you are using:
  - A 64-bit key:  
Type 10 hexadecimal characters (characters from 0 to 9 and from A to F) or 5 alphanumeric characters.
  - A 128-bit key:  
Type 26 hexadecimal characters (characters from 0 to 9 and from A to F) or 13 alphanumeric characters.
- 4** Click **Apply**.
- 5** Configure your wireless client(s) with the same settings.



## 5 Getting the Most Out of Your Thomson Gateway

### In this chapter

In this chapter we will take a closer look at following features:

Topic	Page
Universal Plug and Play	28
Assigning a service (HTTP, FTP,...) to a computer	35
Dynamic DNS	37

### Feature availability

Depending on the configuration offered by your Internet Service Provider (ISP), some features may not be available on your Thomson Gateway. For more information, contact your ISP.

## 5.1 Universal Plug and Play

### Introduction

UPnP is designed to automate the installation and configuration of a (small) network as much as possible. This means that UPnP-capable devices can join and leave a network without any effort of a network administrator.

### Supported Operating Systems

Following operating systems support UPnP:

- > Windows Vista
- > Windows XP



If your computer is running Windows XP, you first have to install the UPnP component. For more information, see "5.1.4 Installing UPnP on Windows XP" on page 33.

### UPnP and the Thomson Gateway

With UPnP you can:

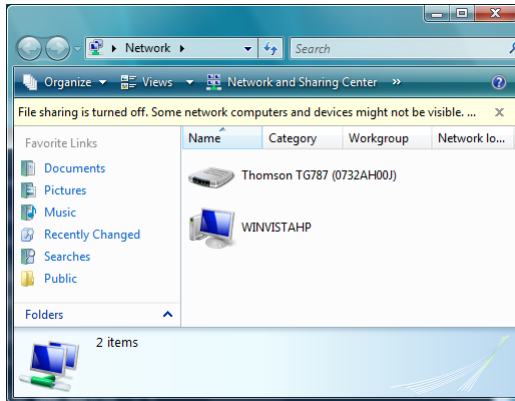
- > Access the Thomson Gateway Web Interface **without having to open the Thomson Gateway Web Interface**. For more information, see [Accessing Your Thomson Gateway with UPnP](#).
- > Connect/disconnect **without having to open the Thomson Gateway Web Interface**. For more information, see [Managing your Internet connection with UPnP](#).
- > Automatic port configuration for UPnP-enabled games and applications. You do not have to create port to run services on a computer. If the application is UPnP-enabled, UPnP will create these entries automatically. For more information, see [Assigning a service \(HTTP, FTP,...\) to a computer](#).

### 5.1.1 Accessing Your Thomson Gateway with UPnP

#### Windows Vista

If your computer runs Windows Vista:

- 1 On the Windows **Start** menu, click **Network**.
- 2 The **Network** window appears:

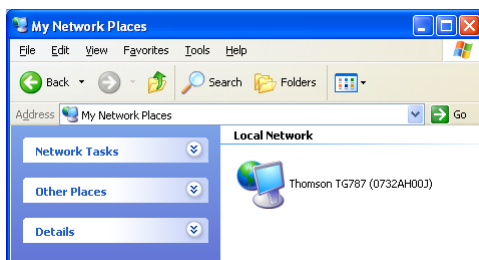


- 3 Right-click your Thomson Gateway (displayed as THOMSON STXXX) and click **View device web page**.
- 4 The Thomson Gateway Web Interface appears.

#### Windows XP

If your computer runs Windows XP:

- 1 Go to **My Network Places**.
- 2 The **My Network Places** window appears:



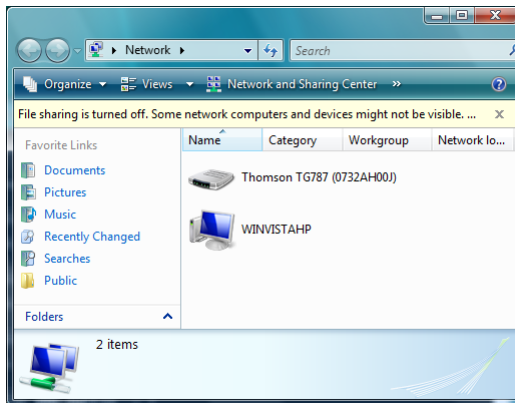
- 3 Double-click your Thomson Gateway (displayed as THOMSON STXXX).
- 4 The Thomson Gateway Web Interface appears.

## 5.1.2 Managing your Internet connection with UPnP

### Windows Vista

If your computer runs Windows Vista:

- 1 On the Windows **Start** menu, click **Network**.
- 2 The **Network** window appears:

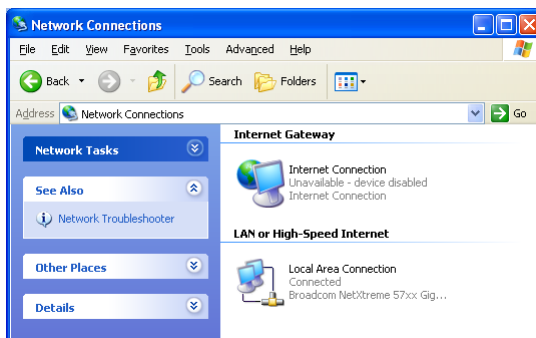


- 3 Right-click your Thomson Gateway (displayed as THOMSON STXXX).
- 4 If you are currently:
  - Connected to the Internet, click **Disable** to disconnect from the Internet.
  - Not connected to the Internet, click **Enable** to connect to the Internet.

### Windows XP

Proceed as follows:

- 1 On the Windows **Start** menu, click **(Settings >) Control Panel**.
- 2 The **Control Panel** window appears. Click **(Network and Internet Connections) > Internet Connections**.
- 3 The **Network Connections** window appears;



- 4 If you right-click the **Internet Connection** icon, you can connect/disconnect your connection to the Internet.

### **Disabling this feature**

To prevent that users can connect/disconnect you can enable Extended Security. For more information, see "5.1.3 Configuring UPnP on the Thomson Gateway" on page 32.

## 5.1.3 Configuring UPnP on the Thomson Gateway

### Introduction

On the Thomson Gateway Web Interface you can:

- > Enable/Disable UPnP
- > Extended Security

### Enable/Disable UPnP

Proceed as follows:

- 1 Browse to the Thomson Gateway Web Interface.
- 2 On the **Toolbox** menu, click **Game & Application Sharing**.
- 3 Under **Universal Plug and Play**:
  - Select the **Use UPnP** check box, to enable UPnP.
  - Clear the **Use UPnP** check box, to disable UPnP.
- 4 Click **Apply**.

### Extended Security

If Extended Security is enabled only limited UPnP operation between the host and the Thomson Gateway is allowed:

- > A local host is not allowed to connect/disconnect the Thomson Gateway Internet connection. You can then only connect/disconnect the Internet connection via the Thomson Gateway Web Interface
- > Address translation mappings can only be added or changed via UPnP for the host on which the UPnP application is running.

### Enabling Extended Security

Proceed as follows:

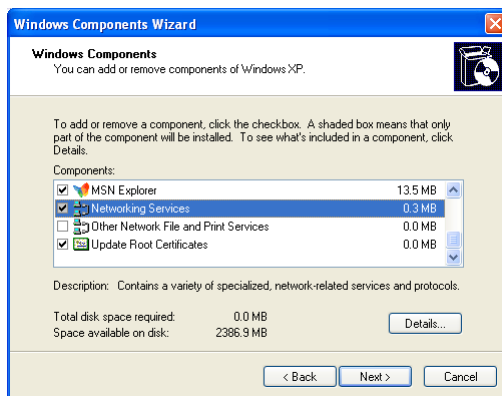
- 1 Browse to the Thomson Gateway Web Interface.
- 2 On the **Toolbox** menu, click **Game & Application Sharing**.
- 3 Under **Universal Plug and Play**, select **Use Extended Security**.
- 4 Click **Apply**.

## 5.1.4 Installing UPnP on Windows XP

### Adding UPnP

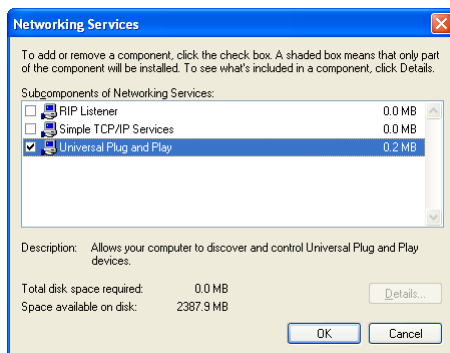
If you are running Microsoft Windows XP, it is recommended to add the UPnP component to your system. Proceed as follows:

- 1 In the **Start** menu, click **(Settings >) Control Panel**.
- 2 The **Control Panel** window appears.  
Click **Add or Remove Programs**.
- 3 The **Add or Remove Programs** window appears.  
Click **Add/Remove Windows Components**.
- 4 The **Windows Components Wizard** appears:



In the **Components** list, select **Networking Services** and click **Details**

- 5 The **Networking Services** window appears:



Select **Universal Plug and Play** or **UPnP User Interface** and click **OK**.

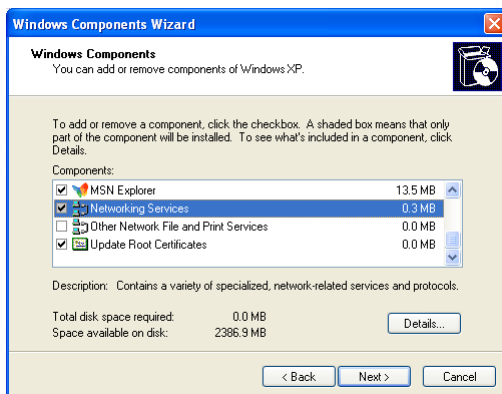
- 6 Click **Next** to start the installation and follow the instructions in the **Windows Components Wizard**.
- 7 At the end of the procedure the Wizard informs you that the installation was successful. Click **Finish** to quit.

## Adding IGD Discovery and Control

Your Windows XP system is able to discover and control Internet Gateway Devices (IGD), like the Thomson Gateway on your local network. Therefore, it is recommended to add the IGD Discovery and Control client to your system.

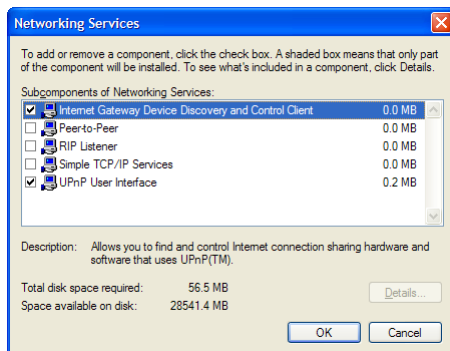
Proceed as follows:

- 1 On the Windows taskbar, click **Start**.
- 2 Select **(Settings >) Control Panel > Add or Remove Programs**.
- 3 In the **Add or Remove Programs** window, click **Add/Remove Windows Components**.
- 4 The **Windows Components Wizard** appears:



Select **Networking Services** in the **Components** list and click **Details**.

- 5 The **Networking Services** window appears:



Select **Internet Gateway Device Discovery and Control Client** and click **OK**.

- 6 Click **Next** to start the installation and follow the instructions in the **Windows Components Wizard**.
- 7 At the end of the procedure, the Wizard informs you that the installation was successful. Click **Finish** to quit.



## 5.2 Assigning a service (HTTP, FTP,...) to a computer

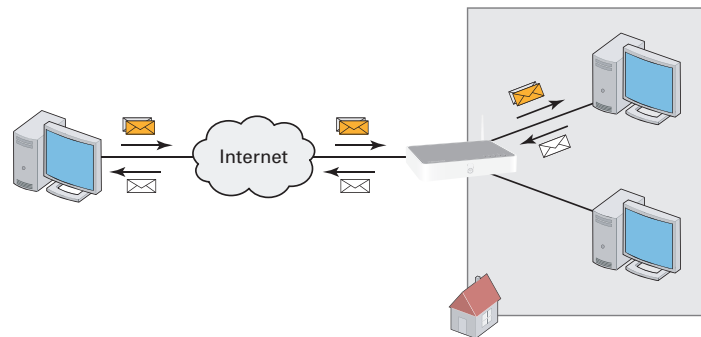
### Introduction

The Thomson Gateway allows you to use one internet connection for multiple computers. This means that all your computers share one public IP address, as if only one computer is connected to the outside world.

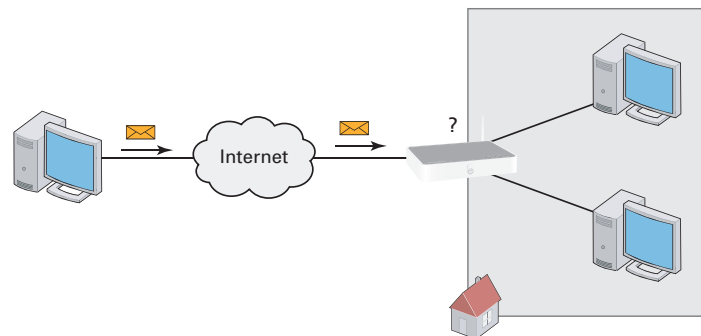
### Problem

When the Thomson Gateway receives an incoming message, the Thomson Gateway has to decide to which computer he will have to send this message.

If the incoming message is a response to an outgoing message originating from one of your computers, the Thomson Gateway sends the incoming message to this computer.



If you are running a server or an application that acts as a server (for example a HTTP server, internet game), the initial message will come from the internet and the Thomson Gateway has to decide to which computer he should forward the incoming message.



### Solution

To avoid this problem you can:

- > Enable UPnP.
- > Assign a game or application to a local networking device.

## UPnP


UPnP is a technology that enables seamless operation of a wide range of games and messaging applications. Your computer will use UPnP to communicate to the Thomson Gateway which services are running on the computer.

For more information on UPnP, see “5.1 Universal Plug and Play” on page 28.

### Assign a game or application to a local networking device

If you assign a game or application to a local networking device, you will basically tell the Thomson Gateway that if it receives requests for a specific game or application, it has to forward these messages to a specific computer.

Proceed as follows to do so:

- 1 Browse to the Thomson Gateway Web Interface.
- 2 On the **Toolbox** menu, click **Game & Application Sharing**.
- 3 In the **Pick a task** list, click **Assign a game or application to a local network device**.
- 4 In the **Game or application** list, click the service you want to run on the computer. For example, **HTTP Server (World Wide Web)**.  
 If the service is not available in the list, click **Create a new game or application** in the **Pick a task** list. For more information, click **Help** on the Thomson Gateway Web Interface.
- 5 In the **Device**, list select the computer to which you want to assign the service. Your computer will be listed with its computer name.
- 6 All incoming request for the selected service will now be directed to the selected device. The Thomson Gateway will also configure the its firewall to allow this service.

## 5.3 Dynamic DNS

### Introduction

The Dynamic DNS service allows you to assign a dynamic DNS host name (for example john.dyndns.org) to a broadband connection even if it is using a dynamic IP address. As soon as the device gets a new IP address, the dynamic DNS server updates its entry to the new IP address.

### What you need

Before you can configure Dynamic DNS, you first have to create an account at a Dynamic DNS service provider. For example:

- > [www.dyndns.org](http://www.dyndns.org)
- > [www.no-ip.com](http://www.no-ip.com)
- > [www.dtdns.com](http://www.dtdns.com)

### Procedure

Proceed as follows:

- 1** Browse to the Thomson Gateway Web Interface.
- 2** On the **Toolbox** menu, click **Dynamic DNS**.
- 3** On the Navigation bar, click **Configure**.
- 4** Select the **Enabled** check box.
- 5** If necessary, select the broadband connection to which you want to assign the Dynamic DNS host name in the Interface list.
- 6** Type the user name and password of your Dynamic DNS service account in the corresponding fields.
- 7** In the **Service** list, click the name of your Dynamic DNS service provider.
- 8** In the **Host** box, type the host name that you got from the Dynamic DNS service provider (for example mywebpage.dyndns.org).
- 9** Click **Apply**.



## 6 Internet Security

### Overview

The Thomson Gateway offers you various options to secure your network:

Topic	Page
Firewall	40
Web Site Filtering	41

## 6.1 Firewall

### Changing the security level

Proceed as follows:

- 1 Browse to the Thomson Gateway Web Interface.
- 2 On the **Toolbox** menu, click **Firewall**.
- 3 The **Firewall** page appears. In the upper-right corner, click **Configure**.
- 4 A list with security settings with a brief description is displayed.
- 5 Select the security level of your choice and click **Apply**.

### Creating a new security level

If you do not find a security level up to your need, you are able to create a new security level.



This feature is intended for *advanced users only*.

Proceed as follows:

- 1 In the **Toolbox** menu, click **Firewall**.
- 2 In the upper right corner, click **Configure**.
- 3 In the **Pick a task** list, click **Create a new Security Level**.
- 4 In the **Name** box, type a name for the new security level.
- 5 In the **Clone from existing Security Levels** list, click the security level you want to start from.
- 6 Click **Apply**.
- 7 You can now make the necessary changes to the security level.

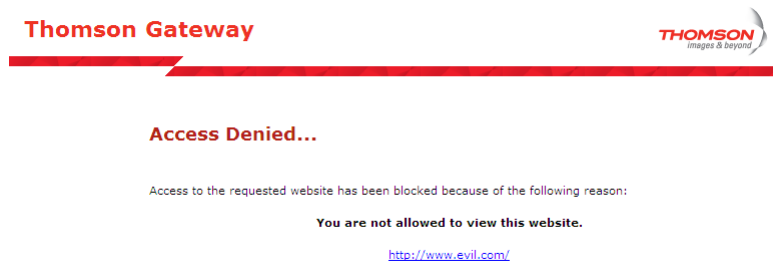
## 6.2 Web Site Filtering

### Introduction

The Thomson Gateway allows you to deny access to specific web sites.

### Access Denied page

When a user tries to access a page that is being blocked, the following page is displayed:



### Address-based filtering

With address-based filtering you can **block web sites based on their address**, also called URL (for example www.porn.com).

Proceed as follows:

- 1** Browse to the Thomson Gateway Web Interface.
- 2** On the **Toolbox** menu, click **Web Site Filtering**.
- 3** On the Navigation bar, click **Configure**.
- 4** Make sure that the **Use Address Based Filter** check box is selected.
- 5** In the **Action for Unknown Sites**, select:
  - **Allow** as the default rule if you want to allow access to **all** web sites and manually specify which web sites may not be accessed.
  - **Block** as the default rule if you want to deny access to **all** web sites and manually specify a number of web sites that may be accessed.
- 6** Click **Apply**.
- 7** If you want to make exceptions for specific web sites, add the necessary rules in the address-based filter. For more information, see "6.2.1 Adding Rules For The Address Based Filter".

## 6.2.1 Adding Rules For The Address Based Filter

### Options

With the address based filter you can:

- > Deny access to a specific Web site
- > Allow access to a specific Web site
- > Redirect a Web site
- > Redirect all Web sites

### Deny access to a specific Web site

Proceed as follows:

- 1 Browse to the Thomson Gateway Web Interface.
- 2 On the **Toolbox** menu, click **Web Site Filtering**.
- 3 Make sure the **Use Address Based Filter** check box is selected.
- 4 Type the URL of the Web site you want to block (for example "mail.provider.com") in the **Web Site** box.
- 5 In the **Action** list, click **Block**.
- 6 Click **Add**.

### Allow access to a specific Web site

Proceed as follows:

- 1 Browse to the Thomson Gateway Web Interface.
- 2 On the **Toolbox** menu, click **Web Site Filtering**.
- 3 Make sure the **Use Address Based Filter** check box is selected.
- 4 Type the URL of the Web site you want to allow (for example "netbanking.bank.com") in the **Web Site** box.
- 5 Click **Allow** in the **Action** list.
- 6 Click **Add**.

### Redirect a Web site

Proceed as follows:

- 1 Browse to the Thomson Gateway Web Interface.
- 2 On the **Toolbox** menu, click **Web Site Filtering**.
- 3 Make sure the **Use Address Based Filter** check box is selected.
- 4 Type the URL of the Web site you want to redirect (for example "cracks.am") in the **Web Site** box.
- 5 Click **Redirect** in the **Action** list.
- 6 Type the URL of the Web site you want to redirect to (for example "mycompany.com/internetpolicy.htm") in the **Redirect** box.
- 7 Click **Add**.



### Redirect all Web sites

Proceed as follows:

- 1** Browse to the Thomson Gateway Web Interface.
- 2** On the **Toolbox** menu, click **Web Site Filtering**.
- 3** Make sure the **Use Address Based Filter** check box is selected.
- 4** Type "\*" in the **Web Site** box.
- 5** Click **Redirect** in the **Action list**.
- 6** Type the URL of the Web site you want to redirect to (for example "mycompany.com/internetpolicy.htm") in the **Redirect** box.
- 7** Click **Add**.



## 7 Troubleshooting

### Introduction

This chapter suggests solutions for problems you may encounter while installing or configuring your Thomson Gateway.

If the suggestions do not resolve the problem, look at the support pages on <http://www.thomson-broadband.com> or contact your service provider.

### Topics

This chapter describes the following topics:

Topic	Page
Setup wizard Troubleshooting	46
General Thomson Gateway Troubleshooting	47
Reset to Factory Defaults	50

## 7.1 Setup wizard Troubleshooting

### The Setup CD does not start automatically

If your computer runs:

- > Microsoft Windows:
  - 1 Click the Windows **Start** button.
  - 2 Click **Run**.
  - 3 In the **Open** field, type the following path: **D:\Setup.exe**, where D stands for the drive letter of your CD- or DVD-ROM drive.
- > Mac OS X:
  - 1 On your desktop, double-click the CD icon.
  - 2 Double-click **Menu**.

### Your Thomson Gateway has not been found

If you see this error during setup, check whether:

- > The Thomson Gateway is turned on and fully initialized.
- > Your computer has a valid IP address, that is any address but 0.0.0.0. For more information, consult the help of your operating system.
- > No dedicated firewall device or router is placed between your computer and the Thomson Gateway.
- > No personal network security software (for example firewall software) is running on your computer.
- > Your computer is correctly connected to the Thomson Gateway

## 7.2 General Thomson Gateway Troubleshooting

### Thomson Gateway does not work

If none of the LEDs light up, make sure that:

- > The Thomson Gateway is plugged into a power socket outlet.
- > You are using the correct power supply for your Thomson Gateway device.



The power requirements for your Thomson Gateway are clearly indicated on the identification label on the bottom of the Thomson Gateway. Only use the power adaptor supplied with your Thomson Gateway.

- > The Thomson Gateway is turned on via the push button or rocker switch on the back panel.

### Thomson Gateway unreachable

If your Thomson Gateway cannot be reached due to misconfiguration, you might consider a hardware reset to factory defaults as described in "7.3 Reset to Factory Defaults" on page 50.

### Poor Thomson Gateway performance

Make sure that the Thomson Gateway is installed and configured as instructed in "1 Installation" on page 3 or as instructed by the Service Provider.

## 7.2.1 Wired Connection Troubleshooting

### Ethernet LED does not light up

Make sure that:

- > The Ethernet cable is securely connected to the Ethernet port on your Thomson Gateway and your computer.
- > You are using the correct cable type for your Ethernet equipment, that is at least UTP CAT5 with RJ-45 connectors.

## 7.2.2 Wireless Connection Troubleshooting

### No Wireless Connectivity

Make sure that:

- > Both the wireless client adapter and the Thomson Gateway are allowed to connect through wireless channels as defined for local regulatory domain.
- > The wireless client is configured for the correct wireless settings (SSID, security settings).
- > Check the signal strength, indicated by the wireless client manager. If the signal is low, try repositioning the Thomson Gateway or directing the Thomson Gateway's antenna(s) for optimal performance.
- > Make sure that the wireless client adapter is enabled (message like "radio on").

### Poor Wireless Connectivity or Range

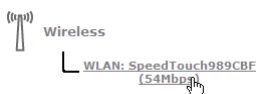
Try the following:

- > Change the wireless channel.
- > Make sure both the wireless client adapter and the Thomson Gateway are allowed to connect through wireless channels as defined for local regulatory domain.
- > Check the location of the Thomson Gateway in the building.
- > Check the signal strength, indicated by the wireless client manager. If the signal is low, try to place the Thomson Gateway or to direct the Thomson Gateway's antenna(s) for optimal performance.
- > Use WPA(2)-PSK as encryption.  
For more information, see "4.2 Securing Your Wireless Connection" on page 23.

### Change the wireless channel

Proceed as follows:

- 1 Browse to the Thomson Gateway Web Interface.
- 2 On the left menu, click **Home Network**.
- 3 Under **Wireless**, click your access point.



Your access point will be listed in the following format: "WLAN:<Network Name> (<Actual Speed>)". For example, **WLAN: SpeedTouch83C7C7 (54Mbps)**.

- 4 The **Wireless Access Point** page appears.
- 5 In the Navigation bar, click **Configure**.
- 6 Under **Configuration**, select the channel of your choice in the **Channel Selection** list.
- 7 Click **Apply**.

## 7.3 Reset to Factory Defaults

### Resetting your Thomson Gateway

If at some point you can no longer connect to the Thomson Gateway or you want to make a fresh install, it may be useful to perform a reset to factory defaults.

### Warning

A reset to factory default settings deletes all configuration changes you made. Therefore, after the reset, a reconfiguration of your Thomson Gateway will be needed.

Also your WLAN clients will have to be re-associated, as described in "4 Wireless" on page 21.

### Methods

You can choose between:

- > Software Reset
- > Hardware Reset

### Software Reset

Proceed as follows:

- 1** Browse to the Thomson Gateway Web Interface.
- 2** On the **SpeedTouch** menu, click **Configuration**.
- 3** In the **Pick a task** list, click **Reset my Thomson Gateway to default settings**.
- 4** The Thomson Gateway restores the initial configuration and restarts.
- 5** The Thomson Gateway returns to the Thomson Gateway home page (unless the IP address of your computer is not in the same subnet as the default IP address of the Thomson Gateway, being 192.168.1.254).



### Hardware Reset

Proceed as follows:

- 1 Make sure the Thomson Gateway is turned on.
- 2 Use a pen or an unfolded paperclip to push the recessed **Reset** button. Push it until the **Power** LED lights red - this will take about 7 seconds.



- 3 Release the **Reset** button.
- 4 The Thomson Gateway restarts.



Your system administrator may have disabled the physical reset button of the Thomson Gateway. In this case, a hardware reset to defaults is not possible.







## **THOMSON Telecom Belgium**

Prins Boudewijnlaan 47  
2650 Edegem

[www.thomson-broadband.com](http://www.thomson-broadband.com)

© Thomson 2008. All rights reserved.  
E-DOC-CTC-20080627-0003 v1.0.



## Free Manuals Download Website

<http://myh66.com>

<http://usermanuals.us>

<http://www.somanuals.com>

<http://www.4manuals.cc>

<http://www.manual-lib.com>

<http://www.404manual.com>

<http://www.luxmanual.com>

<http://aubethermostatmanual.com>

Golf course search by state

<http://golfingnear.com>

Email search by domain

<http://emailbydomain.com>

Auto manuals search

<http://auto.somanuals.com>

TV manuals search

<http://tv.somanuals.com>