



## **THOMSON TG784**

Wireless VoIP Multi-User Ethernet WAN & ADSL2+ Gateway



# **Setup and User Guide**



# THOMSON TG784

## Setup and User Guide

## Copyright

Copyright ©1999-2008 Thomson. All rights reserved.

Distribution and copying of this document, use and communication of its contents is not permitted without written authorization from Thomson. The content of this document is furnished for informational use only, may be subject to change without notice, and should not be construed as a commitment by Thomson. Thomson assumes no responsibility or liability for any errors or inaccuracies that may appear in this document.

Thomson Telecom Belgium  
Prins Boudewijnlaan, 47  
B-2650 Edegem  
Belgium

<http://www.thomson-broadband.com>

## Trademarks

The following trademarks may be used in this document:

- DECT is a trademark of ETSI.
- Bluetooth® word mark and logos are owned by the Bluetooth SIG, Inc.
- Ethernet™ is a trademark of Xerox Corporation.
- Wi-Fi®, WMM® and the Wi-Fi logo are registered trademarks of the Wi-Fi Alliance®. "Wi-Fi CERTIFIED", "Wi-Fi ZONE", "Wi-Fi Protected Access", "Wi-Fi Multimedia", "Wi-Fi Protected Setup", WPA, WPA2" and their respective logos are trademarks of the Wi-Fi Alliance®.
- UPnP™ is a certification mark of the UPnP™ Implementers Corporation.
- Microsoft®, MS-DOS®, Windows®, Windows NT® and Windows Vista® are either registered trademarks or trademarks of Microsoft Corporation in the United States and/or other countries.
- Apple® and Mac OS® are registered trademarks of Apple Computer, Incorporated, registered in the United States and other countries.
- UNIX® is a registered trademark of UNIX System Laboratories, Incorporated.
- Adobe®, the Adobe logo, Acrobat and Acrobat Reader are trademarks or registered trademarks of Adobe Systems, Incorporated, registered in the United States and/or other countries.

Other brands and product names may be trademarks or registered trademarks of their respective holders.

## Document Information

Status: v1.0 (September 2008)

Reference: E-DOC-CTC-20080421-0010

Short Title: Setup and User Guide TG784 R8.2 (en)

<b>About this Setup and User Guide .....</b>	<b>1</b>
<b>1 Installation.....</b>	<b>3</b>
<b>1.1 Preliminary Steps.....</b>	<b>4</b>
<b>1.2 Installing your Thomson Gateway .....</b>	<b>5</b>
1.2.1 Guided Installation .....	6
1.2.2 Manual Installation.....	8
<b>2 Thomson Gateway Basics .....</b>	<b>9</b>
<b>2.1 Thomson Gateway LED Behaviour .....</b>	<b>10</b>
2.1.1 Status LEDs .....	11
2.1.2 WPS Button LED .....	13
2.1.3 Ethernet LEDs .....	14
<b>2.2 Thomson Gateway Web Interface .....</b>	<b>15</b>
<b>2.3 Backing Up/Restoring your Configuration .....</b>	<b>18</b>
<b>3 Adding a New Computer to your Network.....</b>	<b>19</b>
<b>3.1 Connecting a Computer Using the Ethernet Cable .....</b>	<b>20</b>
<b>4 Wireless .....</b>	<b>21</b>
<b>4.1 Connecting Your Wireless Client via WPS .....</b>	<b>22</b>
<b>4.2 Connecting Your Wireless Client without WPS .....</b>	<b>24</b>
<b>4.3 Securing Your Wireless Connection.....</b>	<b>25</b>
4.3.1 Configuring WPA-PSK Encryption .....	27
4.3.2 Configuring WEP Encryption.....	28
<b>5 Telephony.....</b>	<b>29</b>
<b>5.1 Connecting a Regular Phone to Your Thomson Gateway .....</b>	<b>30</b>
<b>5.2 Installing the Thomson DECT USB Adapter .....</b>	<b>31</b>
<b>5.3 Connecting a DECT Phone to Your Thomson Gateway .....</b>	<b>32</b>
<b>5.4 Configuring the Telephony Service.....</b>	<b>33</b>
<b>5.5 Address Book.....</b>	<b>35</b>
<b>5.6 Telephony services.....</b>	<b>36</b>

# Contents

---

<b>5.7</b>	<b>Viewing Telephony Statistics .....</b>	<b>40</b>
<b>6</b>	<b>Getting the Most Out of Your Thomson Gateway.....</b>	<b>41</b>
<b>6.1</b>	<b>Sharing Content on your Network.....</b>	<b>42</b>
6.1.1	Setting Up the File Server.....	44
6.1.2	Managing your Shared Content.....	47
6.1.3	Using UPnP AV to Share Content with Media Devices .....	48
6.1.4	Accessing your Shared Content by FTP .....	49
6.1.5	Safely Removing your USB Storage Device .....	51
<b>6.2</b>	<b>Universal Plug and Play .....</b>	<b>52</b>
6.2.1	Accessing Your Thomson Gateway with UPnP .....	53
6.2.2	Managing your Internet connection with UPnP.....	54
6.2.3	Configuring UPnP on the Thomson Gateway .....	56
6.2.4	Installing UPnP on Windows XP .....	57
<b>6.3</b>	<b>Assigning a service (HTTP, FTP,...) to a computer .....</b>	<b>59</b>
<b>6.4</b>	<b>Dynamic DNS .....</b>	<b>61</b>
<b>7</b>	<b>Internet Security .....</b>	<b>63</b>
<b>7.1</b>	<b>Firewall.....</b>	<b>64</b>
<b>7.2</b>	<b>Web Site Filtering.....</b>	<b>65</b>
7.2.1	Configuring The Content-based Filter .....	67
7.2.2	Adding Rules For The Address Based Filter.....	68
<b>8</b>	<b>Troubleshooting .....</b>	<b>71</b>
<b>8.1</b>	<b>Setup wizard Troubleshooting .....</b>	<b>72</b>
<b>8.2</b>	<b>General Thomson Gateway Troubleshooting .....</b>	<b>73</b>
8.2.1	Wired Connection Troubleshooting.....	74
8.2.2	Wireless Connection Troubleshooting .....	75
<b>8.3</b>	<b>Voice over IP Troubleshooting.....</b>	<b>76</b>
<b>8.4</b>	<b>Reset to Factory Defaults .....</b>	<b>77</b>

## About this Setup and User Guide

### Used Symbols



A **note** provides additional information about a topic.



A **caution** warns you about potential problems or specific precautions that need to be taken.

### Terminology

Generally, the THOMSON TG784 will be referred to as Thomson Gateway in this Setup and User Guide.

### Typographical Conventions

Following typographical convention is used throughout this manual:

- **Sample text** indicates a hyperlink to a Web site.  
Example: For more information, visit us at [www.thomson-broadband.com](http://www.thomson-broadband.com).
- **Sample text** indicates an internal cross-reference.  
Example: If you want to know more about guide, see "1 Introduction" on page 7".
- **Sample text** indicates an important content-related word.  
Example: To enter the network, you **must** authenticate yourself.
- **Sample text** indicates a GUI element (commands on menus and buttons, dialog box elements, file names, paths and folders).  
Example: On the **File** menu, click **Open** to open a file.

### Documentation and software updates

Thomson continuously develops new solutions, but is also committed to improving its existing products.

For more information on Thomson's latest technological innovations, documents and software releases, visit us at <http://www.thomson-broadband.com>.

# About this Setup and User Guide

---



## 1 Installation

### **Introduction**

In a few minutes you will be able to access the Internet using your Thomson Gateway.

This Setup and User Guide will show you how to set up your Thomson Gateway and how to connect your computer(s) to the Internet.

# 1 Installation

## 1.1 Preliminary Steps

### DSL service (only if you are using your Thomson Gateway as Internet Gateway)

The DSL service must be up and running on your telephone line.

If both conventional telephone and DSL service are simultaneously available from the same copper pair, you will need a central splitter or distributed filters for decoupling DSL and telephone signals.



Public telephone lines carry voltages that can cause electric shock. Only try to set up splitter/filters that have been designed to be installed by unqualified personnel. For further assistance, contact your Internet Service Provider.

### Computer requirements

- To connect a computer via Ethernet, make sure the computer is equipped with an Ethernet Network Interface Card (NIC).
- For wireless networking, you will need a WiFi-certified wireless client adapter for each computer you want to connect wirelessly.

### Internet connection details

You may need the following connection details from your Internet Service Provider (ISP):

- Your ISP's method for connecting to the Internet (for example PPPoE)
- The VPI/VCI (for example 8/35)
- Your user name and password to connect to the Internet for PPP connections
- Your IP settings in case of static configurations



Optionally your ISP may indicate the Service Profile to use during Setup.

You may have received this information when you subscribed at your Internet Service Provider. You may be prompted for this information at a given step in the installation procedure.

### Voice over IP (VoIP) connection details

If you want to be able to make phone calls over the Internet, you will need following details for your VoIP connection:

- A user account at your VoIP Service Provider
- The server settings of your VoIP Service



These settings may be provided by your Internet Service Provider.

## 1.2 Installing your Thomson Gateway

### Installation methods

There two ways to set up your Thomson Gateway:

- Guided Installation
- Manual Installation

### Guided Installation

#### *How it works*

The Setup wizard included on the CD will guide you through all configuration aspects of your Thomson Gateway. This is the recommended way to install your Thomson Gateway.

#### *Requirements*

- Your computer must run one of the following operating systems:
  - ▶ Microsoft Windows Vista (SP1) or higher
  - ▶ Microsoft Windows Vista x64 (SP1) or higher
  - ▶ Microsoft Windows XP SP2 or higher
  - ▶ Microsoft Windows XP x64 SP 1 or higher
  - ▶ Microsoft Windows 2000 SP4
  - ▶ Mac OS X 10.4 (Tiger)
  - ▶ Mac OS X 10.5 (Leopard)
- You must have administrative rights on your computer

#### *Getting started*

Proceed with "1.2.1 Guided Installation" on page 6.

### Manual Installation

#### *How it works*

The Setup and User Guide will first help you to connect your computer to the Thomson Gateway. After this is done, you can configure your Thomson Gateway using your web browser.

#### *Requirements*

Javascript must be enabled on your web browser.

#### *Getting started*

Proceed with "1.2.2 Manual Installation" on page 8.

# 1 Installation

## 1.2.1 Guided Installation

### Connecting devices: wait!

Do not plug in any cables or connect any devices until you are prompted to do so by the wizard.

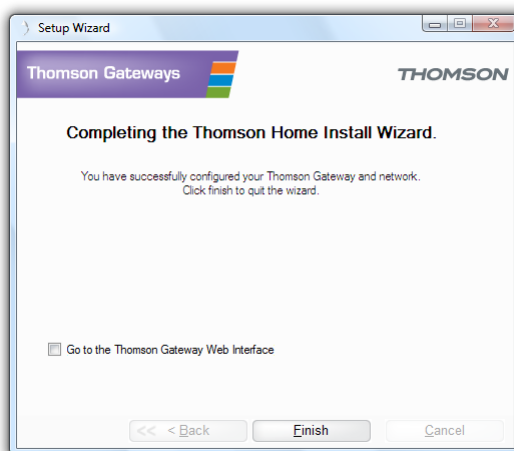
### In case of problems

If you encounter problems during this installation please refer to "8.1 Setup wizard Troubleshooting" on page 72.

### Starting the wizard

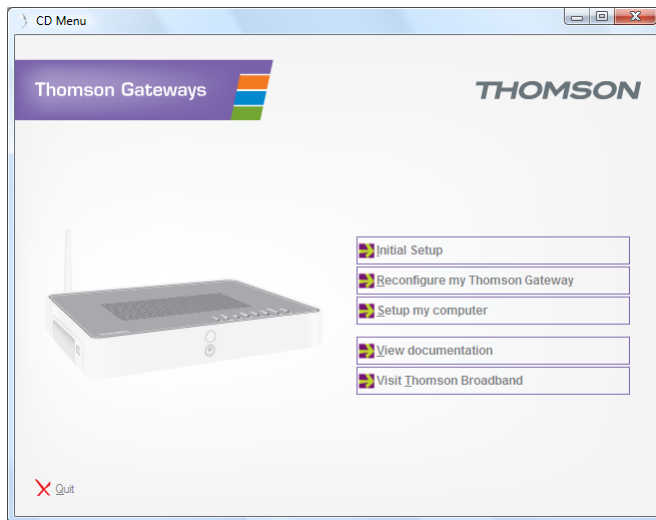
To start the wizard:

- 1 Insert the Setup CD into your computer's CD- or DVD-ROM drive.
- 2 If your computer runs:
  - ▶ Microsoft Windows: The CD should autostart.
  - ▶ Mac OS X: Double-click **Menu** in the window with the content of the CD.
- 3 Select the language of your choice and click **OK**.
- 4 The Setup wizard will now guide you through the installation.
- 5 At the end of the installation, following screen appears:



- 6 Select the [Go to the Thomson Gateway Web Interface](#) if you want to go to the Thomson Gateway Web Interface after closing the wizard. On the Thomson Gateway Web Interface, you can further configure your Thomson Gateway.
- 7 Click **Finish**.
- 8 The **CD menu** appears.

## CD menu



On the **CD Menu**, click:

- **Initial Setup** to connect your computer to the Thomson Gateway and configure it.
- **Reconfigure my Thomson Gateway** to reconfigure your Thomson Gateway.
- **Setup my computer** to connect your computer to the Thomson Gateway network.
- **View Documentation** to view the documentation that is available for your Thomson Gateway. This list will be automatically updated if you are connected to the Internet.
- **Visit Thomson Broadband** to visit the online support sections on [www.thomson-broadband.com](http://www.thomson-broadband.com).



Actual available items may depend on the Setup CD delivered with your Thomson Gateway.

# 1 Installation

## 1.2.2 Manual Installation

### Procedure

Proceed as follows:

- 1 Connect the cables
- 2 Configure the Thomson Gateway

### Connect the cables

Proceed as follows:

- 1 Connect your computer to the Thomson Gateway as described in "3 Adding a New Computer to your Network" on page 19.
- 2 Connect the Thomson Gateway to the DSL line.

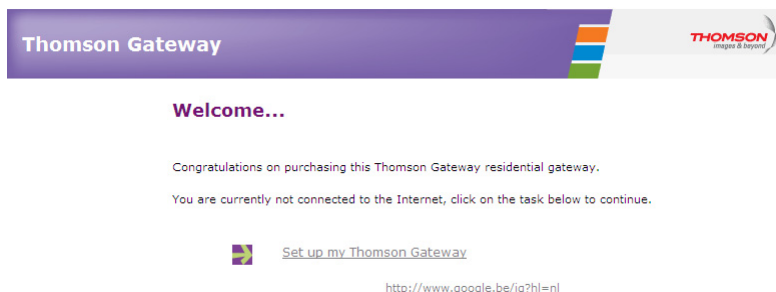


If your Internet Service Provider (ISP) is not using the Thomson Gateway to access the Internet, you must not connect the DSL cable. Instead, use an Ethernet cable to connect the **WAN** port of your Thomson Gateway to your Internet Gateway.

- 3 Connect the power supply.
- 4 Turn on the Thomson Gateway.

### Configure the Thomson Gateway

- 1 Open your web browser.
- 2 The Thomson Gateway informs you that you have not yet configured your Thomson Gateway.



If this window does not appear browse to <http://dsldevice.lan> or to the IP address of your Thomson Gateway (by default: **192.168.1.254**) and click **Thomson Gateway** on the menu on the left-hand side.

- 3 Click **Setup my Thomson Gateway**.
- 4 The **Easy Setup** wizard appears. This wizard will guide you through the configuration of your Thomson Gateway. Click **Next** and follow the instructions.

## 2 Thomson Gateway Basics

### In this chapter

Topic	Page
Thomson Gateway LED Behaviour	10
Thomson Gateway Web Interface	15
Backing Up/Restoring your Configuration	18

## 2 Thomson Gateway Basics

---

### 2.1 Thomson Gateway LED Behaviour

#### Content

This chapter describes the behaviour of:

- Status LEDs
- WPS Button LED
- Ethernet LEDs



### 2.1.1 Status LEDs

#### Introduction

On the top panel of your Thomson Gateway, you can find a number of status LEDs, indicating the state of the device during normal operation.

#### Power LED

Colour	State	Description
Green	Solid on	Power on, normal operation
Red	Solid on	Power on, self-test failed, indicating device malfunction
Amber	Blinking	Bootloader active (during upgrade)
Off		Power off

#### Ethernet LED

Colour	State	Description
Green	Blinking	Ethernet activity
	Solid on	Ethernet connection, no activity
Off		No Ethernet connection

#### Wireless LED

Colour	State	Description
Green	Blinking	Wireless activity, WPA(2) encryption
	Solid on	No wireless activity, WPA(2) encryption
Amber	Blinking	Wireless activity, WEP encryption
	Solid on	No wireless activity, WEP encryption
Red	Blinking	Wireless activity, no security
	Solid on	No wireless activity, no security
Red/green	Toggling	Wireless client registration phase
Off		WLAN disabled

## 2 Thomson Gateway Basics

### Broadband LED

Colour	State	Description
Green	Blinking	Pending DSL line synchronisation
	Solid on	DSL line synchronised
Off		No DSL line

### Internet LED

Colour	State	Description
Green	Blinking	Internet activity
	Solid on	Internet connectivity, no activity
Red	Solid on	Internet connection setup failed
Off		No Internet connection

### Phone LED

Colour	State	Description
Green	Solid on	VoIP service up
	Blinking	VoIP activity
Off		VoIP service down

### 2.1.2 WPS Button LED

#### Introduction

The WPS button allows you to add new wireless clients to your network.



For more information, see [Connecting Your Wireless Client via WPS](#).

#### WPS LED

Colour	State	Description
Green	Solid On	Client successfully registered via WPS
Amber	Blinking	WPS registration ongoing
Red	Blinking	Error occurred

## 2 Thomson Gateway Basics

---

### 2.1.3 Ethernet LEDs

#### Ethernet LED

A LED may be provided per Ethernet port to indicate link integrity (or activity).

LED Status	Description
Off	No connection on this port
Solid on	Ethernet link up
Blinking	Data is flowing from/to this port

### 2.2 Thomson Gateway Web Interface

#### Introduction

The Thomson Gateway Web Interface allows you to configure your Thomson Gateway using your web browser.

#### Requirements

Javascript must be enabled on your browser. For more information, consult the help of your Internet browser.

#### Accessing the Thomson Gateway Web Interface

Proceed as follows:

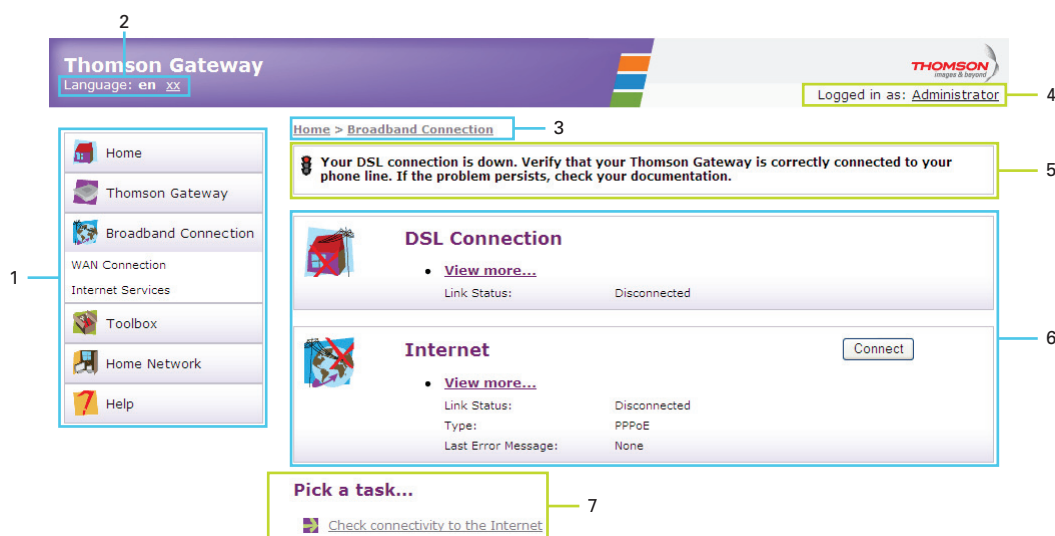
- 1 Open your web browser.
- 2 Browse to <http://dsldevice.lan> or to the IP address of your Thomson Gateway (by default: [192.168.1.254](http://192.168.1.254)).
- 3 If you have protected your Thomson Gateway with a user name and password, the Thomson Gateway will prompt you to enter these. Enter your user name and password and click **OK**.
- 4 The Thomson Gateway Web Interface appears.

If your computer runs Windows Vista or Windows XP, you can also access the Thomson Gateway Web Interface using the Internet Gateway Device icon. For more information, see "6.2 Universal Plug and Play" on page 52.

## 2 Thomson Gateway Basics

### Components

All the pages contain following components:



Label	Description
1	Menu
2	Language bar
3	Location bar
4	Login section
5	Notification area
6	Content pane
7	Tasks

### Menu

The menu consists of the following menu items:

- **Home:**  
Allows you to go back to the home page.
- **Thomson Gateway:**  
Provides basic information on the Thomson Gateway.
- **Broadband Connection:**  
Allows you to view/configure your broadband connections.
- **Toolbox:**  
Allows you to assign games or applications to a device and secure your Internet connection.
- **Home Network:**  
Allows you to manage your local network.
- **Help:**  
Allows you to view context-related help information.

### Language bar

The language bar allows you to change the language of the Thomson Gateway Web interface.



The language bar will only be shown if more than one language is available.

### Location bar

The location bar allows you to view the current position in the Thomson Gateway Web interface.

### Login section

In this section you can see the current user name.

By clicking your user name, you can:

- Change your password.
- Switch to another user.

### Notification area

The notification area is used to display:

- Error messages, indicated by a red traffic light.
- Warnings, indicated by an orange traffic light.
- Information, indicated by a green traffic light.



If none of these events occur, the notification area will not be shown.

### Content pane

The content pane displays the information and configurable items of the selected topic.

### Tasks

To allow a quick configuration of your Thomson Gateway, some pages may offer you a number of related tasks in the **Pick a task** list. These tasks will guide you to the page where you can perform the selected task.

## 2 Thomson Gateway Basics

---

### 2.3 Backing Up/Restoring your Configuration

#### Introduction

Once you have configured your Thomson Gateway to your needs, it may be a good idea to backup your configuration for later use. This way you can always return to your working configuration in case of problems.

#### Backing up your configuration

Proceed as follows:

- 1 Browse to the Thomson Gateway Web Interface.
- 2 On the **Thomson Gateway** menu, click **Configuration**.
- 3 In the **Pick a task** list, click **Save or Restore Configuration**.
- 4 Under **Backup current configuration**, click **Backup Configuration Now**.
- 5 The Thomson Gateway prompts you to save your file.
- 6 Save your file to a location of your choice.

#### Restoring your configuration

Proceed as follows:

- 1 Browse to the Thomson Gateway Web Interface.
- 2 On the **Thomson Gateway** menu, click **Configuration**.
- 3 In the **Pick a task** list, click **Save or Restore Configuration**.
- 4 Under **Restore saved configuration**, click **Browse**.
- 5 Open your backup file.
- 6 The Thomson Gateway restores your configuration.

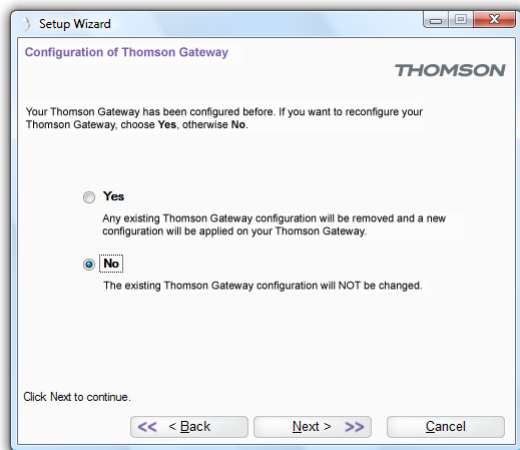


### 3 Adding a New Computer to your Network

#### Guided Installation

If you configured your Thomson Gateway using the Guided Installation, use the same procedure on the computer that you want to add.

At a specific point in the installation, the Setup wizard will inform you that the Thomson Gateway has already been configured:



Select **No** and click **Next** to continue.

#### Manual Installation

If you want to connect your computer to the Thomson Gateway using:

- A Wireless connection, continue with “4 Wireless” on page 21.
- The Ethernet cable, continue with “3.1 Connecting a Computer Using the Ethernet Cable” on page 20.

## 3 Adding a New Computer to your Network

### 3.1 Connecting a Computer Using the Ethernet Cable

#### Requirements

- Your computer must have a free Ethernet port.
- Your computer must be configured to obtain an IP address automatically. This is the default setting.

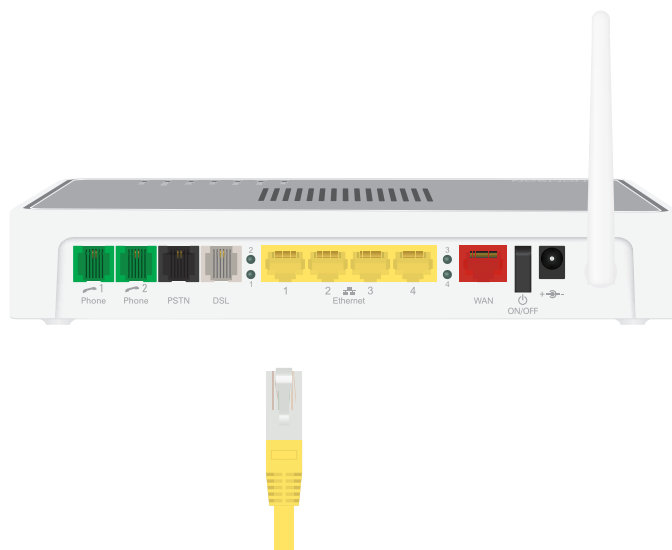
#### Ethernet cable

In your package, you will find a cable with yellow connectors. This is the Ethernet cable.

#### Procedure

Proceed as follows:

- 1 Connect one end of the Ethernet cable to (one of the) yellow Ethernet port(s) of your Thomson Gateway:



- 2 Connect the other end of the Ethernet cable to your computer.
- 3 Your computer is now connected to your network. No additional configuration is needed.

## 4 Wireless

### Introduction

With the built-in wireless access point you are no longer bound by cables to connect to the Internet.

### What you need to set up a wireless network

To set up a wireless network, you need following components

- A Wireless Access Point
- A Wireless client

### Wireless Access Point

You can consider the wireless access point as the heart of your wireless network. The wireless access point:

- Connects the different wireless devices with each other.
- Secures the data sent over wireless connection.

The Thomson Gateway comes with an integrated wireless access point. The only thing you need is a wireless client.

### Wireless client

The wireless client allows you to connect a device, typically a computer, to a wireless access point. Both built-in and external (for example via USB) are available.

Check the documentation of your computer if you are not sure if your computer is equipped with a wireless client

### Configuring your wireless clients

Before you can start surfing the internet with a wireless connection, you must first connect your wireless client to your wireless access point: the Thomson Gateway.

For more information, see "4.1 Connecting Your Wireless Client via WPS" on page 22 and "4.2 Connecting Your Wireless Client without WPS" on page 24.

### Secure your wireless connection!

Because you no longer need a physical connection, everyone who is within the range of your Thomson Gateway can access your network. This means that your neighbour can easily use your connection without you knowing it or that hackers can use your connection to hack into other computers.

You can easily prevent this by securing your wireless connection. For more information, see "4.3 Securing Your Wireless Connection" on page 25.

## 4 Wireless

### 4.1 Connecting Your Wireless Client via WPS

#### WPS

Wi-Fi Protected Setup (WPS) allows you to add new wireless clients to your network in a swift and easy way, without the need to enter all of your wireless settings (SSID, encryption,...).

#### Requirements

- Your wireless client must supports WPS. Check the documentation of your wireless client for this.
- Your Thomson Gateway must use WPA(2)-PSK encryption (default encryption) or no encryption. WPS with WEP encryption is not possible.

#### Procedure

Proceed as follows:

- 1 Shortly press the WPS button on the Thomson Gateway:



- 2 The WPS button LED starts blinking orange. This indicates that the Thomson Gateway is now searching for wireless clients that are in registration mode. You now have two minutes to start WPS on your wireless client.
- 3 Start WPS on your wireless client.

#### The WPS button LED is solid green

This indicates that you have successfully registered your wireless client. You are now connected to the Thomson Gateway network.

#### The WPS button LED is blinking red

This indicates that the Thomson Gateway could not find your wireless client.

Make sure that the WLAN LED is blinking amber when you start WPS on your wireless client. If you still have trouble connecting to the Thomson Gateway, try connecting your wireless client without WPS. For more information, see "4.2 Connecting Your Wireless Client without WPS" on page 24.

### Troubleshooting

If you are having trouble connecting your wireless client via WPS, try to configure it manually. For more information, see "4.2 Connecting Your Wireless Client without WPS" on page 24.

## 4.2 Connecting Your Wireless Client without WPS

### Before you start

Before you can connect a computer to your wireless network you need to know which Network Name (SSID) and encryption your Thomson Gateway is using.

### Where can I find the SSID?

If you did not change the SSID manually, your Thomson Gateway uses the SSID that is printed on the bottom panel label of your Thomson Gateway.

### Where can I find the encryption?

*You have not yet configured your Thomson Gateway*

In this case, no encryption is used.

*You have already configured your Thomson Gateway using the Guided Installation*

If you choose to use the wireless settings proposed by the Setup wizard, you can find the encryption key/passphrase on the label on the bottom of your Thomson Gateway.

### Forgot your wireless settings?

If you have changed the wireless settings manually and you can't remember your settings, try one of the following:

If one of your computers is already connected to your network:

- 1 Browse to the Thomson Gateway Web Interface on a computer that is already connected to your network.
- 2 On the **Home Network** menu, click **Wireless**.
- 3 In the upper-right corner, click **Details**.
- 4 The wireless Access Point page appears. Under:
  - ▶ **Configuration**, you can find the network name (SSID).
  - ▶ **Security**, you can find the encryption.

If none of your computers is connected to your network, connect a computer using a wired connection and follow the procedure above to find out what your wireless settings are.

Another option is to reset your Thomson Gateway and reconfigure it all over again. For more information, see "8.4 Reset to Factory Defaults" on page 77.

### Procedure

Configure your computer with the same wireless settings as your Thomson Gateway. For more information, consult the help of your wireless client.

## 4.3 Securing Your Wireless Connection

### Introduction

By using encryption, communication between the wireless clients and your Thomson Gateway is protected by a passphrase. Only clients which use the correct network name (SSID) and passphrase can connect to your network.

### Encryption methods

During the years a number of encryption types have been developed. The list below gives you an overview of the supported encryption types ordered by security level, you will find the highest level of security at the top of the list:

- **WPA-PSK Encryption:**  
The wireless data is being encrypted with a user-defined key. Wireless clients must be configured with this key before they can connect to the Thomson Gateway.
- **WEP Encryption:**  
The first encryption type used for wireless connections. Like WPA-PSK it uses a user-defined key, but WEP has been proven to have some security issues. We strongly recommend you to use WPA-PSK instead.

### WPA-PSK versions

The Thomson Gateway supports the following WPA-PSK versions:

- **WPA2** (also referred to as WPA2-PSK):  
WPA2 is the most secure version, but not all wireless clients already support it. Before you select this version, make sure all of your wireless clients support it.
- **WPA+WPA2:**  
If not all of your wireless clients support WPA2 or you are not sure if they support WPA2, we recommend you to choose WPA+WPA2. Wireless clients that support WPA2 will use WPA2, the others will use WPA.
- **WPA:**  
If none of your wireless clients support WPA2 choose this option.



To use WPA2 on Windows XP Service Pack 2 (SP2) you first have to install Wi-Fi Protected Access 2 (WPA2)/Wireless Provisioning Services Information Element (WPS IE) update or install SP3.

You can find the WPS IE update on <http://support.microsoft.com/kb/917021>.

### Which encryption method should I use?

We strongly recommend you to *use the highest level* of encryption that is supported by all your wireless clients.

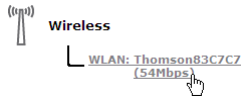
### Configuring the wireless encryption

Proceed as follows:

- 1 Open the Thomson Gateway Web Interface.
- 2 On the left menu, click **Home Network**.

# 4 Wireless

- 3 Under **Wireless**, click your access point.



Your access point will be listed in the following format: “WLAN:<Network Name> (<Actual Speed>)”. For example, **WLAN: Thomson83C7C7 (54Mbps)**.


- 4 The **Wireless Access Point** page appears.
- 5 In the Location bar, click **Configure**.
- 6 Under **Security**, you can change the **Encryption**. If you want to use:
  - ▶ WPA-PSK Encryption, continue with “4.3.1 Configuring WPA-PSK Encryption” on page 27.
  - ▶ WEP Encryption, continue with “4.3.2 Configuring WEP Encryption” on page 28.



## 4.3.1 Configuring WPA-PSK Encryption

### Procedure

Continuing from “ Configuring the wireless encryption”:

- 1 Select **Use WPA-PSK Encryption**.
  - 2 In the **WPA-PSK Encryption Key** box, type a pass phrase (also known as Pre-shared key) of your choice. The pass phrase must consist of 8 to 63 alphanumeric characters or 64 hexadecimal characters (characters from 0 to 9 and from A to F).
  - 3 In the **WPA-PSK Version** list, click the WPA-version of your choice. Following options are available:
    - ▶ **WPA2:**  
WPA2 is the most secure version, but not all wireless clients already support it. Before you select this version, make sure all of your wireless clients support it.
    - ▶ **WPA+WPA2:**  
If not all of your wireless clients support WPA2 or you are not sure if they support WPA2, we recommend you to choose WPA+WPA2. Wireless clients that support WPA2 will use WPA2, the others will use WPA.
    - ▶ **WPA:**  
If none of your wireless clients support WPA2 choose this option.
-  To use WPA2 on Windows XP Service Pack 2 (SP2) you first have to install Wi-Fi Protected Access 2 (WPA2)/Wireless Provisioning Services Information Element (WPS IE) update or install SP3.  
You can find the WPS IE update on <http://support.microsoft.com/kb/917021>.
- 4 Click **Apply**.
  - 5 Configure your wireless client(s) with the same settings.

## 4.3.2 Configuring WEP Encryption

### Procedure

Continuing from “Configuring the wireless encryption”:

- 1** Select **Use WEP Encryption**
- 2** In the **WEP Key Length** list, click the desired key length (a higher key length offers higher security).
- 3** In the **Encryption key** box, type a Network key of your choice. If you are using:
  - ▶ A 64-bit key:  
Type 10 hexadecimal characters (characters from 0 to 9 and from A to F) or 5 alphanumeric characters.
  - ▶ A 128-bit key:  
Type 26 hexadecimal characters (characters from 0 to 9 and from A to F) or 13 alphanumeric characters.
- 4** Click **Apply**.
- 5** Configure your wireless client(s) with the same settings.

## 5 Telephony

### Voice over IP (VoIP)

VoIP is a technology in which telephone calls are made over the Internet. This allows you to save on communication costs, especially for long-distance calls.

### The old solution

To be able to make your phone calls over the Internet you could:

- Buy an IP phone.  
These IP phones are special phones that you can connect to your Internet Gateway.
- Install VoIP software on your computer and make your phones calls via your computer.

### The Thomson solution

With the Thomson Gateway you can make both Internet and regular telephone calls using:

- A traditional analogue phone.
- A DECT phone, if your package contains a Thomson DECT USB Adapter.

If the device is not powered, the Thomson Gateway will automatically select the analogue signal (if connected). This way you are still able to make emergency calls.

### In this chapter

This chapter covers following topics:

Topic	Page
Connecting a Regular Phone to Your Thomson Gateway	30
Installing the Thomson DECT USB Adapter	31
Connecting a DECT Phone to Your Thomson Gateway	32
Configuring the Telephony Service	33
Address Book	35
Telephony services	36
Viewing Telephony Statistics	40

## 5.1 Connecting a Regular Phone to Your Thomson Gateway

### Procedure

Use a phone cable with RJ-11 connectors to:

- 1 Wire the green Thomson Gateway Phone port(s) to your phone(s) or fax.
- 2 If your Thomson Gateway has a black port labelled **PSTN**, you must connect this port to the telephone output of your DSL filter or splitter to allow analogue phone calls with the same telephone set that you use for VoIP calls.



This is only required if you still want to make phone calls using the analogue telephone line.

Be aware that, if the PSTN port (if provided) is not wired to your telephone wall outlet, distributed filter or splitter, emergency calls are not always possible!

As distributed filters are country-specific, you cannot use the device everywhere.

If this is not the case, no additional connections are needed.

- 3 If you configured your Thomson Gateway using the *Guided Installation*, the telephony service will already be configured by the Setup wizard. Your phone is now ready for use.

If you choose to configure your Thomson Gateway manually or you still need to configure the telephony service, continue with "5.4 Configuring the Telephony Service" on page 33.

## 5.2 Installing the Thomson DECT USB Adapter

### Introduction

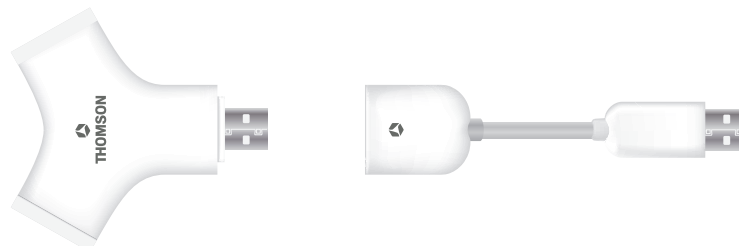
If your package contains a Thomson DECT USB Adapter, you can use this Thomson DECT USB Adapter to turn your Thomson Gateway into a DECT base station. The only thing you need to do is plug in your Thomson DECT USB Adapter and register your DECT phones.



### Procedure

Proceed as follows:

- 1 Connect the flexicable to the Thomson DECT USB Adapter:



- 2 Plug the Thomson DECT USB Adapter in the USB master port.
- 3 On of the red LEDs on the Thomson DECT USB Adapter start blinking. As long as this LED is blinking you will be able to register your DECT phone.
- 4 Register your DECT phone You can now connect your DECT phone(s) to the Thomson Gateway base station. For more information, see "5.3 Connecting a DECT Phone to Your Thomson Gateway".

## 5.3 Connecting a DECT Phone to Your Thomson Gateway

### Introduction

The Thomson Gateway is equipped with a DECT base station allowing you to connect up to five DECT phones. Before you can start using your DECT phone, you first have to register it to your Thomson Gateway. Once registered you will be able to make phone calls over the traditional (PSTN) phone network (if enabled by your telephone operator) or using VoIP (if configured).

### Procedure

Proceed as follows:

- 1 (Re)plug your Thomson DECT USB Adapter in the USB master port of your Thomson Gateway. For more information, see "5.2 Installing the Thomson DECT USB Adapter" on page 31.
- 2 One of the LEDs on your Thomson DECT USB Adapter starts blinking. This indicates that you can now register your DECT phone. If the LED stops blinking before you were able to register, replug the Thomson DECT USB Adapter.
- 3 Register your DECT phone. If you are using:
  - ▶ A Thomson DECT phone proceed with "Registering your Thomson DECT phone" on page 32.
  - ▶ Another DECT phone, consult your DECT phone user documentation to register your DECT phone.

### Registering your Thomson DECT phone

On the Thomson DECT phone:

- 1 Select **Menu**.
- 2 Navigate to **Settings** and press **OK**.
- 3 Select **Registration** and press **OK**.
- 4 Select **Register Handset** and press **OK**.
- 5 Select in the base list the base to store this registration in and press **OK**.



It is possible to register your Thomson DECT phone to up to five different base stations. If a base in the list is marked with a green dot it is already used to store a specific registration with a base station. If not marked it is empty and can be used for a registration with a new base station.

- 6 You are prompted to enter the system PIN code of the Thomson Gateway. Enter "0000"(default value) and press **OK**. Your Thomson DECT phone is now searching your Thomson Gateway base station.
- 7 When the registration was successful, the message "Registered to base x" appears on the screen of your Thomson DECT phone.

## 5.4 Configuring the Telephony Service

### Introduction

If you configured your Thomson Gateway using the Guided Installation, the telephony service will already be configured by the Setup wizard.

If you choose to configure your Thomson Gateway manually or you still need to configure the telephony service, you can follow the procedure below.

### Requirements

Your Internet connection must be up and running before you can configure Internet telephony.

### Procedure

Proceed as follows:

- 1 Assign Phone Numbers
- 2 Configure the Telephony Service
- 3 Enable the Telephony Service

### Assign Phone Numbers

To configure your Internet SIP telephone numbers:

- 1 Browse to the Thomson Gateway Web Interface.
- 2 On the **Toolbox** menu, click **Telephony**.
- 3 In the **Location** bar, click **Configure**. Assign phone numbers to the ports. If you want to use the same number for all ports, select Port **'All'**.



The phone numbers are provided by your provider.

- 4 Click **Apply**.

### Configure the Telephony Service

Proceed as follows to configure the telephony service:

- 1 Browse to the Thomson Gateway Web Interface.
- 2 On the **Toolbox** menu, click **Telephony**.
- 3 In the **Location** bar, click **Expert configure**.
- 4 Enter the IP address and the port number of the registrar, and the proxy, as provided by your ISP:
- 5 Click **Apply**.

### Enable the Telephony Service

To enable the telephony service:

- 1 Browse to the Thomson Gateway Web Interface.
- 2 On the **Toolbox** menu, click **Telephony**.

# 5 Telephony

- 3 In the **Location bar**, click **Configure**.
- 4 Select **Service Enabled**.
- 5 Click **Apply**.

## Verifying Telephone Connectivity

Proceed as follows to verify the voice connection:

- 1 Make sure the Thomson Gateway is turned on and ready for service.
- 2 Check whether your phone is properly attached to the Thomson Gateway.
- 3 Make sure the Internet telephony service is enabled and configured.
- 4 The **Phone** LED must be solid green.
- 5 Pick up your phone, wait for the dialling tone, and dial the number. If you dial a '#' after the phone number, the phone number will be called over the regular telephone network.



The phone(s) attached to the Thomson Gateway can receive incoming VoIP calls, as long as your Thomson Gateway is turned on and the **Phone** LED is lit.

For calls over the analogue phone line, your phones are line-powered by the telephone company and can therefore always be reached, even if the Thomson Gateway is turned off.

## Multiple Identities

You can assign up to three Internet telephone numbers or URIs to one or both phone ports, or you can assign a common number to both phone ports.



The phone numbers are provided by your provider.

## Using Multiple Identities

Proceed as follows:

- 1 Browse to the Thomson Gateway web pages.
- 2 On the **Toolbox** menu, click **Telephony**.
- 3 In the **Location bar**, click **Configure**.
- 4 In the **Pick a task** list, click **Use multiple identities**.
- 5 Click **Add**.
- 6 Enter another URI, your user name and password.
- 7 Choose the phone port for which you want to use this telephone number.
- 8 Click **Apply**.



## 5.5 Address Book

### Introduction

The Thomson Gateway allows you to store the contact details of your contacts on the Thomson Gateway Web Interface. On this page, you can make a call or send a message simply by clicking on a link.

### Accessing the Address Book page?

Proceed as follows:

- 1 Browse to the Thomson Gateway Web Interface.
- 2 On the **Toolbox** menu, click **Address Book**.
- 3 The **Address Book** page appears.

### Managing contacts

To:

- Add a contact, click **Add**.
- Edit a contact, click **Edit**.
- Delete a contact, click **Delete**.

All information provided per contact is optional except for the Last and First Name, and can be updated or completed at any time.



The Address book resides on the Thomson Gateway, so everyone with access to the Thomson Gateway web interface can view and use the Address book.

### Using the Address book

The contact details of a contact in your Address book allow you to directly make a call or send a message from out the Thomson Gateway web interface.

Per contact you can click (if available):

- **Business:** to make a call to the contact's business telephone number
- **Home:** to make a call to the contacts home telephone number
- **Mobile:** to make a call to the contact's mobile telephone number
- **Other or SIP uri:** to make a call to the contact's VoIP telephone number
- **E-mail:** for sending an E-mail message to the contact with your e-mail client.

# 5 Telephony

## 5.6 Telephony services

### Introduction

Telephony services or supplementary services add extra functionality to your phone. Which supplementary services that are available is determined by your service provider.

The following list gives an overview of the services that may be available:

- 3pty: three party call
- Callreturn: to call back the last missed call
- Ccbs: call completion on busy subscriber (automatic callback)
- Cfbs: call forwarding on busy subscriber
- Cfnr: call forwarding on no reply
- Cfu: call forwarding unconditional
- Clip: calling line identification presentation
- Clir: calling line identification restriction
- Clironcall: clir for only one call
- ForcedFXO: switch to FXO (PSTN)
- Hold: put an active call on hold
- Mwi: message waiting indication
- Transfer: call transfer between local ports
- Waiting: incoming call while active call indication
- Waitingoncall: call waiting active for only one call.

### Checking which services that you can use?

To check which services you can use:

- 1 Browse to the Thomson Gateway Web Interface.
- 2 On the **Toolbox** menu, click **Telephony**.
- 3 In the **Location bar**, click **Configure**.
- 4 In the **Pick a task** list, click **View Telephony Services**.
- 5 Under **Telephony Services**, you can see the services that are supported by your provider.

### Activating services

You can activate/deactivate supplementary services in two ways:

- Via activation/deactivation codes, also referred to as service code commands.
- Via the Telephony Configure page.

The activation/deactivation codes for a specific supplementary service is displayed in the overview.

For example, to activate **Call Hold** dial \*94; to deactivate the service dial #94.

## Activating services on the web pages

To activate/deactivate supplementary services via the web page:

- 1 Browse to the Thomson Gateway Web Interface.
- 2 On the **Toolbox** menu, click **Telephony**.
- 3 In the Location bar, click **Configure**.
- 4 In the **Pick a task** list, click **View Telephony Services**.
- 5 In the Location bar, click **Configure**.
- 6 To activate/ deactivate supplementary services select/clear the check box of the supplementary service.
- 7 Click **Apply**.

## Call Forwarding

**Call Forwarding** informs you about the call forwarding parameters:

- **CFNR-timer** or Call Forwarding on No Reply timer is the time expressed in seconds after which an incoming call is forwarded when not answered.
- **CFNR-destination** or Call Forwarding on No Reply destination is the telephone number to which a call is forwarded when the CFNR-timer expires.
- **CFU-destination** or Call Forwarding Unconditional is the telephone number to which an incoming call is always forwarded.
- **CFBS-destination** or Call Forwarding on Busy Subscriber is the telephone number to which an incoming call is forwarded when your telephone is busy.

## Using switching order commands

In order to use switching order commands (R or hook flash followed by a digit), certain supplementary services have to be activated.

The following list gives an overview of the supplementary services that have to be activated in order to use switching order commands (SOC):

- Activate **Hold** when you want to

Action	Press	Illustration
To put an active call on hold and enable a call set up (the dial tone is generated)	R, 2	<p>The diagram shows three nodes: A (bottom), B (top left), and C (top right). In the initial state, a solid red line connects A and B, labeled 'active'. A dashed line connects A and C, labeled 'on hold'. An arrow labeled 'A presses R2' points to the next state where the solid line is dashed and labeled 'on hold', and a new solid red line connects A and C, labeled 'dial tone'.</p>
To terminate the call on hold	R, 0	<p>The diagram shows three nodes: A (bottom), B (top left), and C (top right). In the initial state, a solid red line connects A and B, labeled 'active'. A dashed line connects A and C, labeled 'on hold'. An arrow labeled 'A presses R0' points to the next state where the solid line connects A and B, labeled 'active', and the dashed line to C is removed.</p>
To terminate an active call and switch to the call on hold	R, 1	<p>The diagram shows three nodes: A (bottom), B (top left), and C (top right). In the initial state, a solid red line connects A and B, labeled 'active'. A dashed line connects A and C, labeled 'on hold'. An arrow labeled 'A presses R1' points to the next state where the solid line connects A and C, labeled 'active', and the dashed line to B is removed.</p>

# 5 Telephony

Action	Press	Illustration
To retrieve the call on hold (when there is no active call)	R, 1	<p>The diagram shows three nodes: A at the bottom, B at the top left, and C at the top right. In the initial state, a dashed line connects A and B, labeled 'on hold'. A solid red line connects A and C, labeled 'active'. An arrow labeled 'A presses R1' points to the final state where the dashed line now connects A and C, labeled 'on hold', and the solid red line connects A and B, labeled 'active'.</p>
To terminate an active call and enables a call set up (the dial tone is generated)	R, 9	<p>The diagram shows three nodes: A at the bottom, B at the top left, and C at the top right. In the initial state, a solid red line connects A and B, labeled 'active', and a dashed line connects A and C, labeled 'on hold'. An arrow labeled 'A presses R9' points to the final state where the solid red line is removed from A and B, and a dashed line connects A and C, labeled 'on hold'. A red arrow points down from node A, labeled 'dial tone'.</p>

- Activate **Waiting** when you want to:

Action	Press	Illustration
To terminate an active call and switch to an incoming call	R, 1	<p>The diagram shows three nodes: A at the bottom, B at the top left, and C at the top right. In the initial state, a solid red line connects A and B, labeled 'active', and a dashed line connects A and C, labeled 'incoming'. An arrow labeled 'A presses R1' points to the final state where the solid red line connects A and C, labeled 'active', and the dashed line connects A and B, labeled 'incoming'.</p>
To reject an incoming call	R, 0	<p>The diagram shows three nodes: A at the bottom, B at the top left, and C at the top right. In the initial state, a solid red line connects A and B, labeled 'active', and a dashed line connects A and C, labeled 'incoming'. An arrow labeled 'A presses R0' points to the final state where the solid red line connects A and B, labeled 'active', and the dashed line between A and C is removed.</p>
To switch between an active call and a call on hold	R, 2	<p>The diagram shows three nodes: A at the bottom, B at the top left, and C at the top right. In the initial state, a solid red line connects A and B, labeled 'active', and a dashed line connects A and C, labeled 'on hold'. An arrow labeled 'A presses R2' points to the final state where the solid red line connects A and C, labeled 'active', and the dashed line connects A and B, labeled 'on hold'.</p>
To switch between an active call and an incoming call	R, 2	<p>The diagram shows three nodes: A at the bottom, B at the top left, and C at the top right. In the initial state, a solid red line connects A and B, labeled 'active', and a dashed line connects A and C, labeled 'incoming'. An arrow labeled 'A presses R2' points to the final state where the solid red line connects A and C, labeled 'active', and the dashed line connects A and B, labeled 'incoming'.</p>

- Activate **3 PTY** when you want to:

Action	Press	Illustration
To establish a conference call (or 3 party connection)	R, 3	
During 3 pty: put B and C on hold	R, 2	
During 3 pty: retrieve B and C	R, 3	

- Activate **Transfer** when you want to:

Action	Press	Illustration
Transfer a call	R, 4	

- Activate **CCBS** when you want to set up a call to a busy subscriber (Press R, 5).

# 5 Telephony

---

## 5.7 Viewing Telephony Statistics

### Introduction

The **Telephony Statistics** page on the Thomson Gateway Web Interface lists:

- Successful incoming calls.
- Missed incoming calls.
- Successful outgoing calls.
- Failed outgoing calls.

### Accessing the Telephony Statistics page

Proceed as follows:

- 1 Browse to the Thomson Gateway Web Interface.
- 2 On the **Toolbox** menu, click **Telephony**.
- 3 The **Address Book** page appears.

### Call Statistics

The **Call Statistics** page shows you the number of:

- Successful incoming calls.
- Missed incoming calls.
- Successful outgoing calls.
- Failed outgoing calls.

for each phone separately and combined.

## 6 Getting the Most Out of Your Thomson Gateway

### In this chapter

In this chapter we will take a closer look at following features:

Topic	Page
Sharing Content on your Network	42
Universal Plug and Play	52
Assigning a service (HTTP, FTP,...) to a computer	59
Dynamic DNS	61

### Feature availability

Depending on the configuration offered by your Internet Service Provider (ISP), some features may not be available on your Thomson Gateway. For more information, contact your ISP.

# 6 Getting the Most Out of Your Thomson Gateway

## 6.1 Sharing Content on your Network

### Introduction

The Thomson Gateway allows you to store your data on a centralised place in the network. This way you can share your files with everyone that is connected to your network.

### What do I need?

A FAT32 formatted USB storage device.



To format your device for FAT32, consult the help of your operating system. Make sure to make a copy of your data before you doing this. Formatting your device will erase all data.

### Procedure

Proceed as follows:

- 1 Connecting your USB storage device to the Thomson Gateway.
- 2 Configure Content Sharing on the Thomson Gateway.

### Connecting your USB storage device to the Thomson Gateway

Plug your USB memory stick or external hard disk in (one of) the USB master port(s) of your Thomson Gateway.



If you need to remove your USB storage device from the Thomson Gateway, make sure to unmount it first. For more information, see “6.1.5 Safely Removing your USB Storage Device” on page 51.



# 6 Getting the Most Out of Your Thomson Gateway

---

## Configure Content Sharing on the Thomson Gateway

If you want to:

- Simply share your data and media with other users on the network, proceed with “6.1.1 Setting Up the File Server” on page 44.
- Share your media with media devices like an IP Set-Top Box, proceed with “6.1.3 Using UPnP AV to Share Content with Media Devices” on page 48.

# 6 Getting the Most Out of Your Thomson Gateway

## 6.1.1 Setting Up the File Server

### Introduction

If you want to allow users to change the content on your USB storage device, you have to enable the **Network File Server** on your Thomson Gateway. This way, all users connected to your Thomson Gateway will be able to access your USB storage device and make changes to it.

### Procedure

To enable the Network File Server:

- 1 Browse to the Thomson Gateway Web Interface.
- 2 On the **Tools** menu, click **Content Sharing**.
- 3 In the Location bar, click **Configure**.
- 4 Under **Network File Server (Windows Networking)**, click **Server Enabled**. It is also recommended to complete in following fields:
  - ▶ **Server Name:**  
You will use this name to access the Thomson Gateway. If you leave this field empty you can only access your USB storage device by entering the IP address (by default: 192.168.1.253)
  - ▶ **Server Description:**  
Here you can add a short description for what kind of data is stored on the USB storage device.
  - ▶ **Workgroup:**  
Enter the same workgroup as your computer(s).
- 5 Click **Apply**.
- 6 All users connected to the Thomson Gateway can now connect to your USB storage device. If you want to limit the number of folders users can access, continue with "6.1.2 Managing your Shared Content" on page 47.
- 7 If your computer runs:
  - ▶ Microsoft Windows, continue with [How to access the shared content on Windows](#).
  - ▶ Mac, continue with [How to access the shared content on Mac](#)

# 6 Getting the Most Out of Your Thomson Gateway

## How to access the shared content on Windows

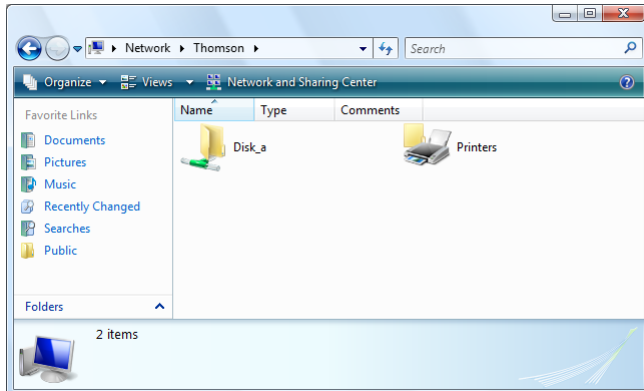
Proceed as follows:

- 1 Open **Windows Explorer**.
- 2 In the address bar type two backslashes followed by the name that you entered in the **Server Name** box (in our example: \\Thomson).



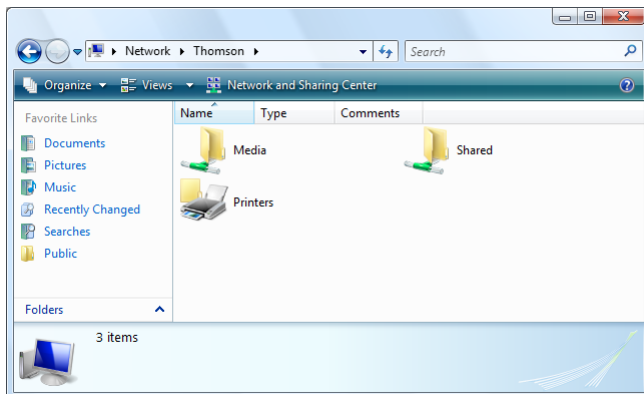
If you did not provide a server name, type \\192.168.1.253.

- 3 All storage devices that are attached to your Thomson Gateway are listed as folders.



If the storage device has multiple partitions an index number will be added at the end (for example: Disk\_a1 and Disk\_a2).

If the partition is a managed partition, the **Media** and **Shared** folders will be displayed instead:



For more information on managed partitions, see “6.1.2 Managing your Shared Content” on page 47.

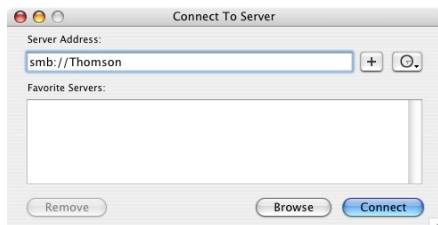
- 4 If you plan to frequently use this folder, it might be useful to map this folder as a network drive. For more information, see your operating system’s help.

## 6 Getting the Most Out of Your Thomson Gateway

### How to access the shared content on Mac

Proceed as follows:

- 1 On the **Go** menu, click **Connect To Server**.
- 2 The **Connect To Server** window appears.
- 3 In the **Server Address** box, type **smb://<server name>**, where <server name> is the Server Name you assigned to your USB storage device. So in our example we will type **smb://Thomson**.



- 4 The **SMB Mount** window appears.



Select the shared folder you want to mount and click **OK**.

- 5 The **SMB/CIFS Filesystem Authentication** window appears. You do not need to authenticate, click **OK**.
- 6 Your USB storage device is now mounted and is displayed on your desktop.

## 6.1.2 Managing your Shared Content

### Introduction

To prevent that users start creating folders on your USB storage device and to keep the directory structure clean and transparent, the Thomson Gateway allows you to configure your USB storage device as Managed Partition.

### Managed Partition

If you select your drive or partition as managed partition, users will only be able to access following folders:

- **Media**
- **Shared**

If these folders are not on your USB storage device. The Thomson Gateway will create them automatically.

All other folders will be hidden from the user. If you connected more than one USB storage device, those devices will also be hidden.

### Procedure

Proceed as follows:

- 1 Browse to the Thomson Gateway Web Interface.
- 2 On the **Tools** menu, click **Content Sharing**.
- 3 In the Location bar, click **Configure**.
- 4 Under **List of connected disks**, click the radio button next to the partition you want to configure as Managed Partition.
- 5 Click **Apply**.

### Result

The Thomson Gateway creates following folders:

- **Media:**  
Use this folder to share your media files with others users on your network. You can store your media files in following subfolders:
  - ▶ **Movies**
  - ▶ **Music**
  - ▶ **Pictures**
- **Shared:**  
Use this folder to share your data with other users. Optionally, users can also access this folder using FTP. For more information, see "6.1.4 Accessing your Shared Content by FTP" on page 49.

If the above folders already exist, the existing folders are used.

# 6 Getting the Most Out of Your Thomson Gateway

## 6.1.3 Using UPnP AV to Share Content with Media Devices

### Introduction

If you want to share your media files with media devices like IP Set-Top Boxes, you have to configure the Thomson UPnP AV Server.

### Thomson UPnP AV Server

The Thomson UPnP AV Server is a server that shares media files with devices that are connected to the same network. These media files are stored on a USB storage device connected to the Thomson Gateway.

### Procedure

Proceed as follows:

- 1 Enable UPnP AV on the Thomson Gateway.
- 2 Select your USB storage device as managed partition.

### Enable UPnP AV on the Thomson Gateway

Proceed as follows:

- 1 Browse to the Thomson Gateway Web Interface.
- 2 On the **Tools** menu, click **Content Sharing**.
- 3 In the Location bar, click **Configure**.
- 4 Under **UPnP AV Media Server**, click **Server Enabled**.

### Select your USB storage device as managed partition

Proceed as follows:

- 1 Under **List of connected disks**, click the radio button next to the partition of which you want to share the media files.
- 2 Click **Apply**.

## 6.1.4 Accessing your Shared Content by FTP

### Introduction

The Thomson Gateway allows you to access your shared content by FTP. This can be useful if you want to be able to access your shared content from the Internet.

### Procedure

Proceed as follows:

- 1 Protect your Thomson Gateway Web Interface login account with a password.  
If you have already configured a password for your login account, you can continue with the next step.
- 2 Configure FTP access for your shared content.

### Protect your Thomson Gateway Web Interface login account with a password

If your login account is not yet configured with a password:

- 1 Browse to the Thomson Gateway Web Interface.
- 2 On the **Toolbox** menu, click **User Management**.
- 3 In the **Pick a task** list, click **Change my password**.
- 4 Leave the **Old Password** box empty.
- 5 Type your new password both in the **New Password** box and **Confirm New Password** box.

### Configure FTP access for your shared content

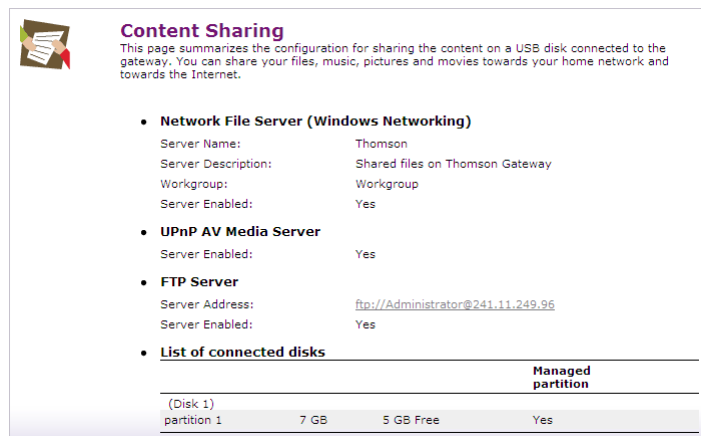
Proceed as follows:

- 1 Browse to the Thomson Gateway Web Interface.
- 2 On the **Tools** menu, click **Content Sharing**.
- 3 In the Location bar, click **Configure**.
- 4 Under **FTP Server**, click **Server Enabled**.
- 5 Under **List of connected disks**, click the radio button next to the partition that you want to access using FTP.
- 6 The Thomson Gateway now creates a **Media** and **Shared** folder on the selected partition. The **Shared** folder will be used as root location for FTP sessions.
- 7 Click **Apply**.

# 6 Getting the Most Out of Your Thomson Gateway

## Result

The **Shared** folder is now accessible using FTP. If you are connected to the Internet, the link to the FTP server is displayed under FTP Server:



**Content Sharing**  
This page summarizes the configuration for sharing the content on a USB disk connected to the gateway. You can share your files, music, pictures and movies towards your home network and towards the Internet.

- **Network File Server (Windows Networking)**  
Server Name: Thomson  
Server Description: Shared files on Thomson Gateway  
Workgroup: Workgroup  
Server Enabled: Yes
- **UPnP AV Media Server**  
Server Enabled: Yes
- **FTP Server**  
Server Address: <ftp://Administrator@241.11.249.96>  
Server Enabled: Yes
- **List of connected disks**

			Managed partition
(Disk 1)			
partition 1	7 GB	5 GB Free	Yes

On the Thomson Gateway network, you can also FTP to the local address (192.168.1.253).

## Additional configuration

As you may know the IP address of your Internet connection may change frequently. This implies that the link to the FTP server will also change every time the public IP changes. With Dynamic DNS, you can assign a host name to the IP address (for example **mygateway.dyndns.org**). For more information, see "6.4 Dynamic DNS" on page 61.



## 6.1.5 Safely Removing your USB Storage Device

### Introduction

If you just remove your USB storage device from the Thomson Gateway you may lose some data. To avoid this you must first unmount your USB storage device.

### Unmounting your USB storage device

Proceed as follows

- 1 Browse to the Thomson Gateway Web Interface.
- 2 On the **Toolbox** menu, click **Content Sharing**.
- 3 In the Location bar, click **Configure**.
- 4 Click **Unmount**.
- 5 Remove your USB storage device from the Thomson Gateway.

# 6 Getting the Most Out of Your Thomson Gateway

## 6.2 Universal Plug and Play

### Introduction

UPnP is designed to automate the installation and configuration of a (small) network as much as possible. This means that UPnP-capable devices can join and leave a network without any effort of a network administrator.

### Supported Operating Systems

Following operating systems support UPnP:

- Windows Vista
- Windows XP



If your computer is running Windows XP, you first have to install the UPnP component. For more information, see "6.2.4 Installing UPnP on Windows XP" on page 57.

### UPnP and the Thomson Gateway

With UPnP you can:

- Access the Thomson Gateway Web Interface without having to open the Thomson Gateway Web Interface. For more information, see [Accessing Your Thomson Gateway with UPnP](#).
- Connect/disconnect without having to open the Thomson Gateway Web Interface. For more information, see [Managing your Internet connection with UPnP](#).
- Automatic port configuration for UPnP-enabled games and applications. You do not have to create port to run services on a computer. If the application is UPnP-enabled, UPnP will create these entries automatically. For more information, see [Assigning a service \(HTTP, FTP,...\) to a computer](#).

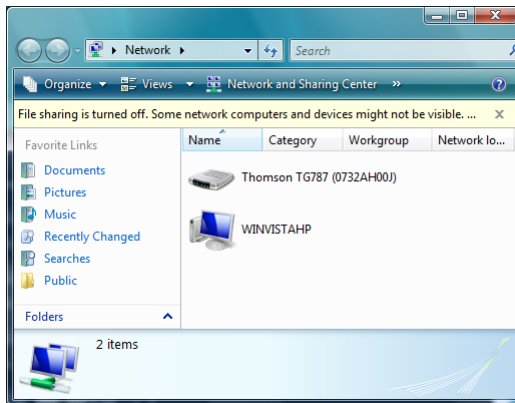
# 6 Getting the Most Out of Your Thomson Gateway

## 6.2.1 Accessing Your Thomson Gateway with UPnP

### Windows Vista

If your computer runs Windows Vista:

- 1 On the Windows **Start** menu, click **Network**.
- 2 The **Network** window appears:

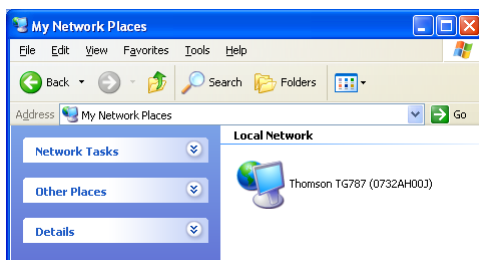


- 3 Right-click your Thomson Gateway (displayed as THOMSON TGXXX) and click **View device web page**.
- 4 The Thomson Gateway Web Interface appears.

### Windows XP

If your computer runs Windows XP:

- 1 Go to **My Network Places**.
- 2 The **My Network Places** window appears:



- 3 Double-click your Thomson Gateway (displayed as THOMSON TGXXX).
- 4 The Thomson Gateway Web Interface appears.

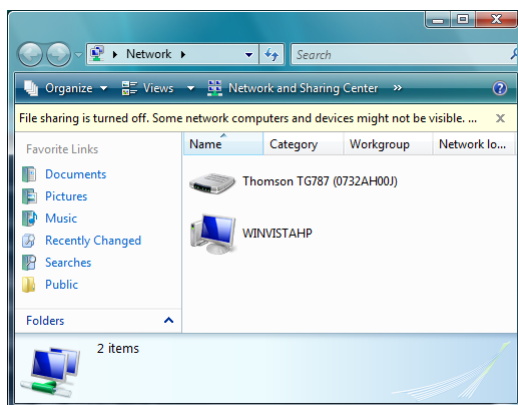
# 6 Getting the Most Out of Your Thomson Gateway

## 6.2.2 Managing your Internet connection with UPnP

### Windows Vista

If your computer runs Windows Vista:

- 1 On the Windows **Start** menu, click **Network**.
- 2 The **Network** window appears:

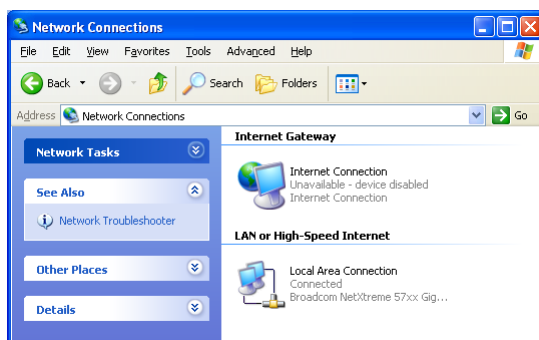


- 3 Right-click your Thomson Gateway (displayed as THOMSON TGXXX).
- 4 If you are currently:
  - ▶ Connected to the Internet, click **Disable** to disconnect from the Internet.
  - ▶ Not connected to the Internet, click **Enable** to connect to the Internet.

### Windows XP

Proceed as follows:

- 1 On the Windows **Start** menu, click **(Settings >) Control Panel**.
- 2 The **Control Panel** window appears. Click **(Network and Internet Connections) > Internet Connections**.
- 3 The **Network Connections** window appears;



- 4 If you right-click the **Internet Connection** icon, you can connect/disconnect your connection to the Internet.

## 6 Getting the Most Out of Your Thomson Gateway

---

### Disabling this feature

To prevent that users can connect/disconnect you can enable Extended Security. For more information, see "6.2.3 Configuring UPnP on the Thomson Gateway" on page 56.

# 6 Getting the Most Out of Your Thomson Gateway

## 6.2.3 Configuring UPnP on the Thomson Gateway

### Introduction

On the Thomson Gateway Web Interface you can:

- Enable/Disable UPnP
- Extended Security

### Enable/Disable UPnP

Proceed as follows:

- 1 Browse to the Thomson Gateway Web Interface.
- 2 On the **Toolbox** menu, click **Game & Application Sharing**.
- 3 Under **Universal Plug and Play**:
  - ▶ Select the **Use UPnP** check box, to enable UPnP.
  - ▶ Clear the **Use UPnP** check box, to disable UPnP.
- 4 Click **Apply**.

### Extended Security

If Extended Security is enabled only limited UPnP operation between the host and the Thomson Gateway is allowed:

- A local host is not allowed to connect/disconnect the Thomson Gateway Internet connection. You can then only connect/disconnect the Internet connection via the Thomson Gateway Web Interface
- Address translation mappings can only be added or changed via UPnP for the host on which the UPnP application is running.

### Enabling Extended Security

Proceed as follows:

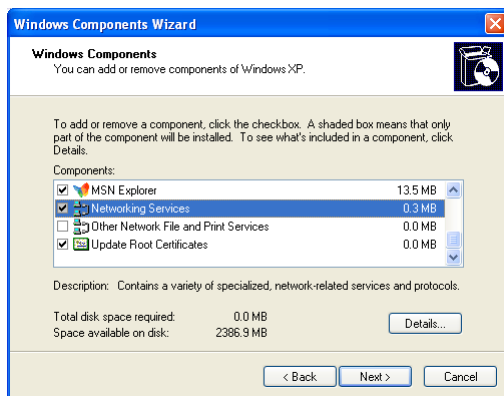
- 1 Browse to the Thomson Gateway Web Interface.
- 2 On the **Toolbox** menu, click **Game & Application Sharing**.
- 3 Under **Universal Plug and Play**, select **Use Extended Security**.
- 4 Click **Apply**.

## 6.2.4 Installing UPnP on Windows XP

### Adding UPnP

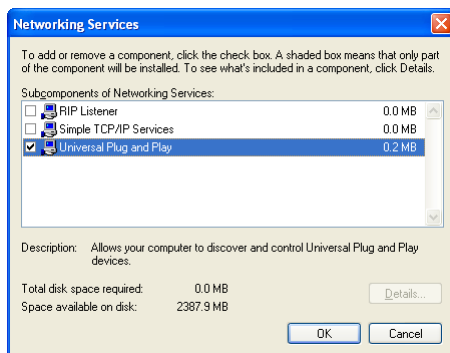
If you are running Microsoft Windows XP, it is recommended to add the UPnP component to your system. Proceed as follows:

- 1 In the **Start** menu, click **(Settings >) Control Panel**.
- 2 The **Control Panel** window appears.  
Click **Add or Remove Programs**.
- 3 The **Add or Remove Programs** window appears.  
Click **Add/Remove Windows Components**.
- 4 The **Windows Components Wizard** appears:



In the **Components** list, select **Networking Services** and click **Details**

- 5 The **Networking Services** window appears:



Select **Universal Plug and Play** or **UPnP User Interface** and click **OK**.

- 6 Click **Next** to start the installation and follow the instructions in the **Windows Components Wizard**.
- 7 At the end of the procedure the Wizard informs you that the installation was successful. Click **Finish** to quit.

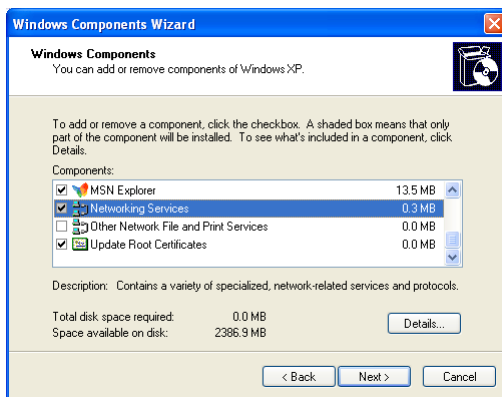
# 6 Getting the Most Out of Your Thomson Gateway

## Adding IGD Discovery and Control

Your Windows XP system is able to discover and control Internet Gateway Devices (IGD), like the Thomson Gateway on your local network. Therefore, it is recommended to add the IGD Discovery and Control client to your system.

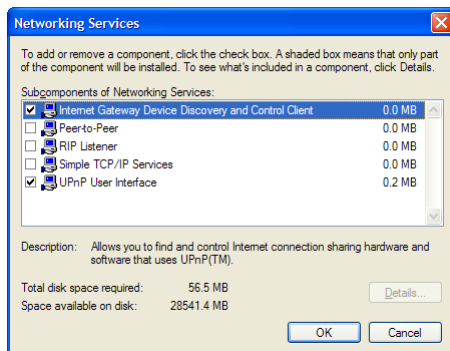
Proceed as follows:

- 1 On the Windows taskbar, click **Start**.
- 2 Select **(Settings >) Control Panel > Add or Remove Programs**.
- 3 In the **Add or Remove Programs** window, click **Add/Remove Windows Components**.
- 4 The **Windows Components Wizard** appears:



Select **Networking Services** in the **Components** list and click **Details**.

- 5 The **Networking Services** window appears:



Select **Internet Gateway Device Discovery and Control Client** and click **OK**.

- 6 Click **Next** to start the installation and follow the instructions in the **Windows Components Wizard**.
- 7 At the end of the procedure, the Wizard informs you that the installation was successful. Click **Finish** to quit.



# 6 Getting the Most Out of Your Thomson Gateway

## 6.3 Assigning a service (HTTP, FTP,...) to a computer

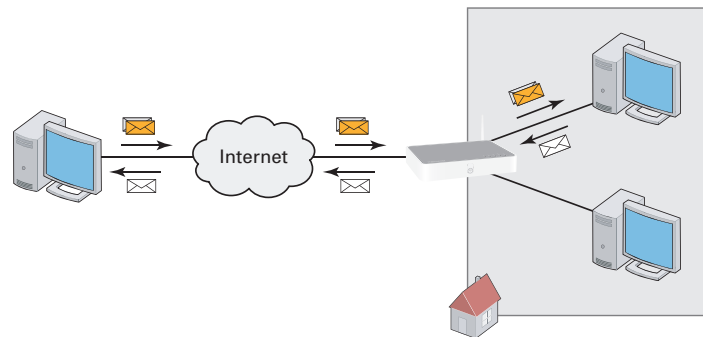
### Introduction

The Thomson Gateway allows you to use one internet connection for multiple computers. This means that all your computers share one public IP address, as if only one computer is connected to the outside world.

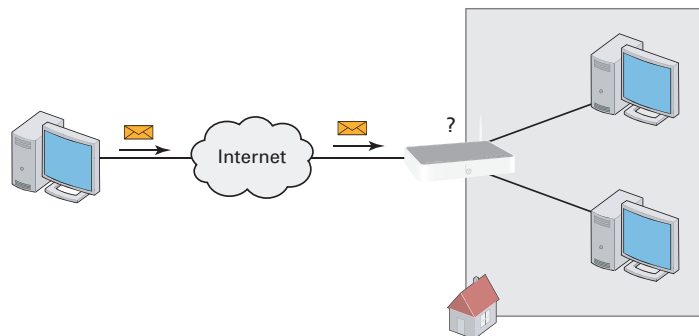
### Problem

When the Thomson Gateway receives an incoming message, the Thomson Gateway has to decide to which computer he will have to send this message.

If the incoming message is a response to an outgoing message originating from one of your computers, the Thomson Gateway sends the incoming message to this computer.



If you are running a server or an application that acts as a server (for example a HTTP server, internet game), the initial message will come from the internet and the Thomson Gateway has to decide to which computer he should forward the incoming message.



### Solution

To avoid this problem you can:

- Enable UPnP.
- Assign a game or application to a local networking device.

## 6 Getting the Most Out of Your Thomson Gateway

### UPnP

UPnP is a technology that enables seamless operation of a wide range of games and messaging applications. Your computer will use UPnP to communicate to the Thomson Gateway which services are running on the computer.

For more information on UPnP, see “6.2 Universal Plug and Play” on page 52.

### Assign a game or application to a local networking device

If you assign a game or application to a local networking device, you will basically tell the Thomson Gateway that if it receives requests for a specific game or application, it has to forward these messages to a specific computer.

Proceed as follows to do so:

- 1 Browse to the Thomson Gateway Web Interface.
- 2 On the **Toolbox** menu, click **Game & Application Sharing**.
- 3 In the **Pick a task** list, click **Assign a game or application to a local network device**.
- 4 In the **Game or application** list, click the service you want to run on the computer. For example, **HTTP Server (World Wide Web)**.



If the service is not available in the list, click **Create a new game or application** in the **Pick a task** list. For more information, click **Help** on the Thomson Gateway Web Interface.

- 5 In the **Device**, list select the computer to which you want to assign the service. Your computer will be listed with its computer name.
- 6 All incoming request for the selected service will now be directed to the selected device. The Thomson Gateway will also configure the its firewall to allow this service.

## 6.4 Dynamic DNS

### Introduction

The Dynamic DNS service allows you to assign a dynamic DNS host name (for example john.dyndns.org) to a broadband connection even if it is using a dynamic IP address. As soon as the device gets a new IP address, the dynamic DNS server updates its entry to the new IP address.

### What you need

Before you can configure Dynamic DNS, you first have to create an account at a Dynamic DNS service provider. For example:

- [www.dyndns.org](http://www.dyndns.org)
- [www.no-ip.com](http://www.no-ip.com)
- [www.dtdns.com](http://www.dtdns.com)

### Procedure

Proceed as follows:

- 1 Browse to the Thomson Gateway Web Interface.
- 2 On the **Toolbox** menu, click **Dynamic DNS**.
- 3 On the **Location** bar, click **Configure**.
- 4 Select the **Enabled** check box.
- 5 If necessary, select the broadband connection to which you want to assign the Dynamic DNS host name in the **Interface** list.
- 6 Type the user name and password of your Dynamic DNS service account in the corresponding fields.
- 7 In the **Service** list, click the name of your Dynamic DNS service provider.
- 8 In the **Host** box, type the host name that you got from the Dynamic DNS service provider (for example mywebpage.dyndns.org).
- 9 Click **Apply**.

## 6 Getting the Most Out of Your Thomson Gateway

---

## 7 Internet Security

### Overview

The Thomson Gateway offers you various options to secure your network:

Topic	Page
Firewall	64
Web Site Filtering	65

# 7 Internet Security

## 7.1 Firewall

### Changing the security level

Proceed as follows:

- 1 Browse to the Thomson Gateway Web Interface.
- 2 On the **Toolbox** menu, click **Firewall**.
- 3 The **Firewall** page appears. In the upper-right corner, click **Configure**.
- 4 A list with security settings with a brief description is displayed.
- 5 Select the security level of your choice and click **Apply**.

### Creating a new security level

If you do not find a security level up to your need, you are able to create a new security level.



This feature is intended for *advanced users only*.

Proceed as follows:

- 1 In the **Toolbox** menu, click **Firewall**.
- 2 In the upper right corner, click **Configure**.
- 3 In the **Pick a task** list, click **Create a new Security Level**.
- 4 In the **Name** box, type a name for the new security level.
- 5 In the **Clone from existing Security Levels** list, click the security level you want to start from.
- 6 Click **Apply**.
- 7 You can now make the necessary changes to the security level.

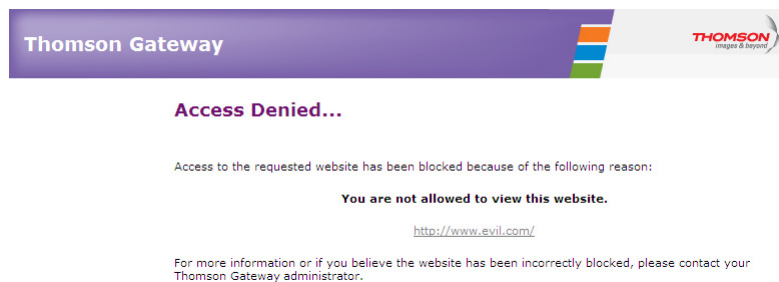
## 7.2 Web Site Filtering

### Introduction

The Thomson Gateway allows you to deny access to specific web sites.

### Access Denied page

When a user tries to access a page that is being blocked, the following page is displayed:



### Address-based filtering

With address-based filtering you can *block web sites based on their address*, also called URL (for example www.porn.com).

But as, you know, the Internet consists of a large number of web sites, and that number still increases every day. This makes it almost impossible to keep this list up to date.

To solve this problem Thomson Gateway introduced content based filtering.

### Content-based filtering

With content-based filtering allows you can *block web sites based on their content category* (for example pornography) instead of the their URL. This way, you only need select the appropriate categories when you enable this feature and the content category server takes care of the rest. This content category server is updated at regular intervals.

### Combining the two filters

*Address-based filtering has priority over content-based filtering.* This means that when you are blocking a specific category (for example **Finance / Investment**), you can still access (netbanking.mybank.com) provided you create a rule to allow access to that URL (for example netbanking.mybank.com).

### Activating content-based filtering

Before you can use content-based filtering you must first activate it by purchasing a license key at your Internet Service Provider (ISP) or by activating the 30-day trial.

Proceed as follows:

- 1 Browse to the Thomson Gateway Web Interface.
- 2 On the **Toolbox** menu, click **Web Site Filtering**.
- 3 In the **Pick a task** list, click **Activate Web Filtering License**.

# 7 Internet Security

- 4 The **Web Filtering Activation** page appears. Under **License Type**, select:
  - ▶ **30-days evaluation** if you first want evaluate this feature.
  - ▶ **Standard** if you have already purchased a license key. The License key box appears as soon as you select this option. Type the license key that you received from your ISP in this box.
- 5 Click **Apply**.

## Option 1: content-based filter (combined with the address-based filter)

If you want to use the content-based filter:

- 1 Browse to the Thomson Gateway Web Interface.
- 2 On the **Toolbox** menu, click **Web Site Filtering**.
- 3 On the Location bar, click **Configure**.
- 4 Make sure that the **Use Content Based Filter** check box is selected.
- 5 Configure the content based filter. For more information, see "7.2.1 Configuring The Content-based Filter".
- 6 If you want to make exceptions for specific web sites, add the necessary rules in the address-based filter. For more information, see "7.2.2 Adding Rules For The Address Based Filter".

## Option 2: address-based filter only

Take this option, if you only want to use the address-based filter or content filtering is not available on your Thomson Gateway.

Proceed as follows:

- 1 Browse to the Thomson Gateway Web Interface.
- 2 On the **Toolbox** menu, click **Web Site Filtering**.
- 3 On the Location bar, click **Configure**.
- 4 Make sure that the **Use Address Based Filter** check box is selected.
- 5 In the **Action for Unknown Sites**, select:
  - ▶ **Allow** as the default rule if you want to allow access to **all** web sites and manually specify which web sites may not be accessed.
  - ▶ **Block** as the default rule if you want to deny access to **all** web sites and manually specify a number of web sites that may be accessed.
- 6 Click **Apply**.
- 7 If you want to make exceptions for specific web sites, add the necessary rules in the address-based filter. For more information, see "7.2.2 Adding Rules For The Address Based Filter".



## 7.2.1 Configuring The Content-based Filter

### Introduction

Address based filtering has a higher priority than content based filtering. This means that when you are blocking a specific category (for example **Finance / Investment**), you can still access (netbanking.mybank.com) provided you create a rule to allow access to that URL (for example netbanking.mybank.com).

### Accessing the configuration page

Proceed as follows:

- 1 Browse to the Thomson Gateway Web Interface.
- 2 On the **Toolbox** menu, click **Web Site Filtering/Parental Control**.
- 3 On the Location bar, click **Configure**.
- 4 Under **Content Based Filtering** you can change the settings of the content based filter.

### Configuring the content-based filter

Under **Content Based Filtering**:

- 1 Select **Use Content Based Filter** check box (if needed).
- 2 In the **Action for uncategorised sites** list, select a default action for sites that have not yet been categorised.
- 3 Under **Content Level**, select the content level you want to use.
- 4 If you want a more detailed view of the content that will be blocked for this level, click the **Edit** link next to the content level.

If needed, you can change the **Name**, **Description** and **Configuration** of the content level. Click **Apply** after you have made your changes.

### Creating your own content level

Proceed as follows:

- 1 In the **Pick a task** list, click **Create a new content level**.
- 2 Enter a **Name** and **Description** for your content level and click **Next**.
- 3 Under **Configuration**, select:
  - ▶ **Clone Existing Level** if you want to start from an existing level. You can now select the level that you want to clone.
  - ▶ **White list** if you want to block everything and select which content should be allowed.
  - ▶ **Black list** if you want to allow everything and select which content should be blocked.
 Click **Next**.
- 4 Under **Configuration**:
  - ▶ Select the check boxes of the categories/groups you want to allow.
  - ▶ Clear the check boxes of the categories/groups you want to block.
- 5 Click **Apply**.
- 6 Configure the content-based filter with the new level. For more information, see "Configuring the content-based filter" on page 67.

## 7.2.2 Adding Rules For The Address Based Filter

### Options

With the address based filter you can:

- Deny access to a specific Web site
- Allow access to a specific Web site
- Redirect a Web site
- Redirect all Web sites

### Deny access to a specific Web site

Proceed as follows:

- 1 Browse to the Thomson Gateway Web Interface.
- 2 On the **Toolbox** menu, click **Web Site Filtering**.
- 3 Make sure the **Use Address Based Filter** check box is selected.
- 4 Type the URL of the Web site you want to block (for example "mail.provider.com") in the **Web Site** box.
- 5 In the **Action** list, click **Block**.
- 6 Click **Add**.

### Allow access to a specific Web site

Proceed as follows:

- 1 Browse to the Thomson Gateway Web Interface.
- 2 On the **Toolbox** menu, click **Web Site Filtering**.
- 3 Make sure the **Use Address Based Filter** check box is selected.
- 4 Type the URL of the Web site you want to allow (for example "netbanking.bank.com") in the **Web Site** box.
- 5 Click **Allow** in the **Action** list.
- 6 Click **Add**.

### Redirect a Web site

Proceed as follows:

- 1 Browse to the Thomson Gateway Web Interface.
- 2 On the **Toolbox** menu, click **Web Site Filtering**.
- 3 Make sure the **Use Address Based Filter** check box is selected.
- 4 Type the URL of the Web site you want to redirect (for example "cracks.am") in the **Web Site** box.
- 5 Click **Redirect** in the **Action** list.
- 6 Type the URL of the Web site you want to redirect to (for example "mycompany.com/internetpolicy.htm") in the **Redirect** box.
- 7 Click **Add**.

### Redirect all Web sites

Proceed as follows:

- 1 Browse to the Thomson Gateway Web Interface.
- 2 On the **Toolbox** menu, click **Web Site Filtering**.
- 3 Make sure the **Use Address Based Filter** check box is selected.
- 4 Type "\*" in the **Web Site** box.
- 5 Click **Redirect** in the **Action list**.
- 6 Type the URL of the Web site you want to redirect to (for example "mycompany.com/internetpolicy.htm") in the **Redirect** box.
- 7 Click **Add**.



## 8 Troubleshooting

### Introduction

This chapter suggests solutions for problems you may encounter while installing or configuring your Thomson Gateway.

If the suggestions do not resolve the problem, look at the support pages on <http://www.thomson-broadband.com> or contact your service provider.

### Topics

This chapter describes the following topics:

Topic	Page
Setup wizard Troubleshooting	72
General Thomson Gateway Troubleshooting	73
Voice over IP Troubleshooting	76
Reset to Factory Defaults	77

# 8 Troubleshooting

---

## 8.1 Setup wizard Troubleshooting

### The Setup CD does not start automatically

If your computer runs:

- Microsoft Windows:
  - 1 Click the Windows **Start** button.
  - 2 Click **Run**.
  - 3 In the **Open** field, type the following path: **D:\Setup.exe**, where D stands for the drive letter of your CD- or DVD-ROM drive.
- Mac OS X:
  - 1 On your desktop, double-click the CD icon.
  - 2 Double-click **Menu**.

### Your Thomson Gateway has not been found

If you see this error during setup, check whether:

- The Thomson Gateway is turned on and fully initialized.
- Your computer has a valid IP address, that is any address but 0.0.0.0. For more information, consult the help of your operating system.
- No dedicated firewall device or router is placed between your computer and the Thomson Gateway.
- No personal network security software (for example firewall software) is running on your computer.
- Your computer is correctly connected to the Thomson Gateway

## 8.2 General Thomson Gateway Troubleshooting

### Thomson Gateway does not work

If none of the LEDs light up, make sure that:

- The Thomson Gateway is plugged into a power socket outlet.
- You are using the correct power supply for your Thomson Gateway device.



The power requirements for your Thomson Gateway are clearly indicated on the identification label on the bottom of the Thomson Gateway. Only use the power adaptor supplied with your Thomson Gateway.

- The Thomson Gateway is turned on via the push button or rocker switch on the back panel.

### Thomson Gateway unreachable

If your Thomson Gateway cannot be reached due to misconfiguration, you might consider a hardware reset to factory defaults as described in “8.4 Reset to Factory Defaults” on page 77.

### Poor Thomson Gateway performance

Make sure that the Thomson Gateway is installed and configured as instructed in “1 Installation” on page 3 or as instructed by the Service Provider.

# 8 Troubleshooting

---

## 8.2.1 Wired Connection Troubleshooting

### **Ethernet LED does not light up**

Make sure that:

- The Ethernet cable is securely connected to the Ethernet port on your Thomson Gateway and your computer.
- You are using the correct cable type for your Ethernet equipment, that is at least UTP CAT5 with RJ-45 connectors.



## 8.2.2 Wireless Connection Troubleshooting

### No Wireless Connectivity

Make sure that:

- Both the wireless client adapter and the Thomson Gateway are allowed to connect through wireless channels as defined for local regulatory domain.
- The wireless client is configured for the correct wireless settings (SSID, security settings).
- Check the signal strength, indicated by the wireless client manager. If the signal is low, try repositioning the Thomson Gateway or directing the Thomson Gateway's antenna(s) for optimal performance.
- Make sure that the wireless client adapter is enabled (message like "radio on").

### Poor Wireless Connectivity or Range

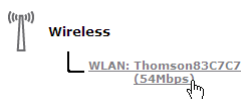
Try the following:

- Change the wireless channel.
- Make sure both the wireless client adapter and the Thomson Gateway are allowed to connect through wireless channels as defined for local regulatory domain.
- Check the location of the Thomson Gateway in the building.
- Check the signal strength, indicated by the wireless client manager. If the signal is low, try to place the Thomson Gateway or to direct the Thomson Gateway's antenna(s) for optimal performance.
- Use WPA(2)-PSK as encryption.  
For more information, see "4.3 Securing Your Wireless Connection" on page 25.

### Change the wireless channel

Proceed as follows:

- 1 Browse to the Thomson Gateway Web Interface.
- 2 On the left menu, click **Home Network**.
- 3 Under **Wireless**, click your access point.



Your access point will be listed in the following format: "WLAN:<Network Name> (<Actual Speed>)". For example, **WLAN: Thomson83C7C7 (54Mbps)**.

- 4 The **Wireless Access Point** page appears.
- 5 In the Location bar, click **Configure**.
- 6 Under **Configuration**, select the channel of your choice in the **Channel Selection** list.
- 7 Click **Apply**.

### Can not connect via WPS

If you are having trouble connecting your wireless client via WPS, try to configure it manually. For more information, see "4.2 Connecting Your Wireless Client without WPS" on page 24.

# 8 Troubleshooting

## 8.3 Voice over IP Troubleshooting

### Introduction

If you cannot establish a phone call via your Thomson Gateway, try the suggestions below.

### Calling over VoIP

If you have problems calling via VoIP, check whether:

- Your telephone is correctly connected to the Thomson Gateway.
- Your telephone is working on the regular phone line (PSTN):
  - ▶ Connect your phone directly to the telephone wall outlet.
  - ▶ Try to make a phone call.
- Your phone number, user name, and password is configured correctly.
- The registrar's and proxy server's IP address and port number are configured correctly.
- The **Power**, **Broadband/DSL** and **Voice** LEDs are on.



As soon as the LED turns on, you will hear a click, indicating the switch from PSTN to VoIP.

### Calling over PSTN

If you have problems calling via the regular phone line, check whether:

- Your telephone is correctly connected to the Thomson Gateway.



If the Thomson Gateway is turned off, phone calls are always routed over PSTN.

- Your telephone is working on the PSTN network:
  - ▶ Connect your phone directly to PSTN.
  - ▶ Try to make a phone call.
- The Forced FXO service is activated, or whether your service provider requested you to dial an extra prefix for making calls via PSTN.

### Problems with Supplementary Services

If you have a problem with a supplementary telephony service, check whether the service is activated.

## 8.4 Reset to Factory Defaults

### Resetting your Thomson Gateway

If at some point you can no longer connect to the Thomson Gateway or you want to make a fresh install, it may be useful to perform a reset to factory defaults.

### Warning

A reset to factory default settings deletes all configuration changes you made. Therefore, after the reset, a reconfiguration of your Thomson Gateway will be needed.

Also your WLAN clients will have to be re-associated, as described in "4 Wireless" on page 21.

### Methods

You can choose between:

- Software Reset
- Hardware Reset

### Software Reset

Proceed as follows:

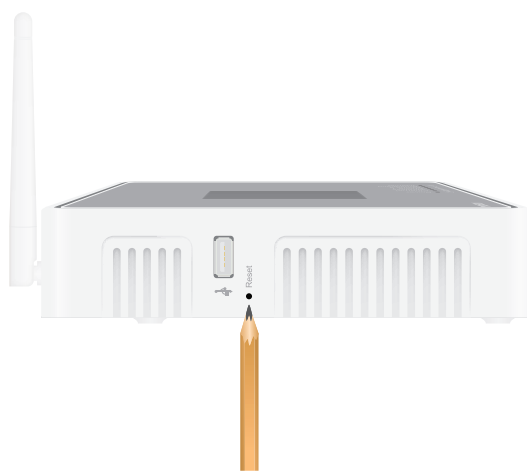
- 1** Browse to the Thomson Gateway Web Interface.
- 2** On the **Thomson Gateway** menu, click **Configuration**.
- 3** In the **Pick a task** list, click **Reset my Thomson Gateway to default settings**.
- 4** The Thomson Gateway restores the initial configuration and restarts.
- 5** The Thomson Gateway returns to the Thomson Gateway home page (unless the IP address of your computer is not in the same subnet as the default IP address of the Thomson Gateway, being 192.168.1.254).

# 8 Troubleshooting

## Hardware Reset

Proceed as follows:

- 1 Make sure the Thomson Gateway is turned on.
- 2 Use a pen or an unfolded paperclip to push the recessed **Reset** button. Push it until the **Power** LED lights red - this will take about 7 seconds.



- 3 Release the **Reset** button.
- 4 The Thomson Gateway restarts.



Your system administrator may have disabled the physical reset button of the Thomson Gateway. In this case, a hardware reset to defaults is not possible.



---

## **THOMSON Telecom Belgium**

Prins Boudewijnlaan 47  
2650 Edegem

[www.thomson-broadband.com](http://www.thomson-broadband.com)

© Thomson 2008. All rights reserved.  
E-DOC-CTC-20080421-0010 v1.0.



## Free Manuals Download Website

<http://myh66.com>

<http://usermanuals.us>

<http://www.somanuals.com>

<http://www.4manuals.cc>

<http://www.manual-lib.com>

<http://www.404manual.com>

<http://www.luxmanual.com>

<http://aubethermostatmanual.com>

Golf course search by state

<http://golfingnear.com>

Email search by domain

<http://emailbydomain.com>

Auto manuals search

<http://auto.somanuals.com>

TV manuals search

<http://tv.somanuals.com>