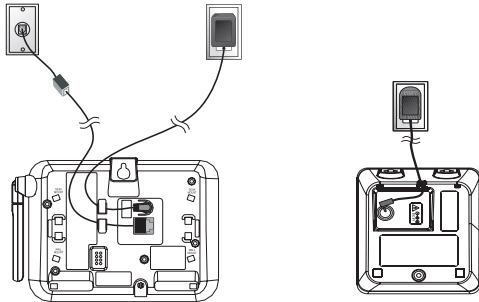


# Quick start guide

for models DS4121-3/DS4122-3/  
DS4121-4/DS4122-4

## Telephone base installation

1. Plug the connector into the power jack at the bottom of the telephone base and charger then plug the power adapter into an electrical outlet not controlled by a wall switch.
2. Plug one end of the telephone line cord into the telephone line jack at the bottom of the telephone base. Then plug the other end of the cord into the modular wall telephone outlet.

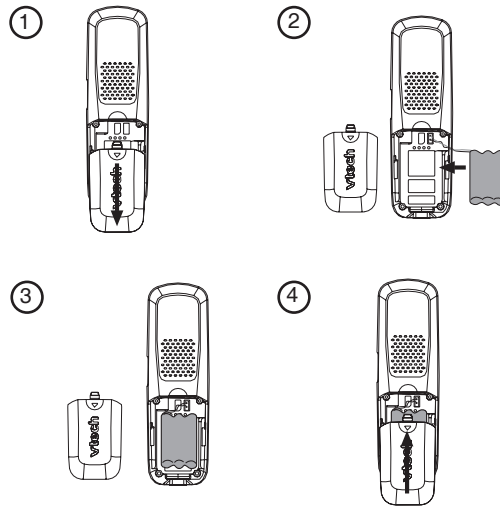


**NOTE:** Use only the power adapters supplied with your VTech telephone or equivalent.

## Install and charge the battery

1. If the battery compartment cover is on the handset, press the indentation and slide the cover to remove.
2. Align the two holes of the battery plug with the socket pins in the handset battery compartment, matching the red and black wires to the color-coded label, then snap the plug securely into place.
3. Place the battery in the compartment with the wires in the upper left corner.
4. Position the battery compartment cover and slide it up until it clicks into place.
5. Place the handset in the telephone base or charger to charge. The **CHARGE** light on the telephone base or charger will be on when the battery is charging.

For optimal performance, we recommend that you charge the handset for 16 hours. The new battery may have enough charge for some calls.



## Exchangeable colorful handset ring

Your telephone comes with additional colorful handset rings. Change it to suit your mood or match your room decor.

To remove the handset ring:

1. Insert your thumbnail into the slot underneath the **MENU/SELECT** button.

2. Lift up the colorful handset ring.

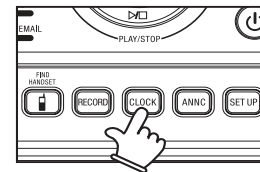
To install a new handset ring:

1. Align the desired handset ring against the **MENU/SELECT** button.

2. Press the colorful handset ring downward until it clicks into place.

## Set the answering system clock

1. Press **CLOCK** and the system will announce the current clock setting. The system will then announce "To set the **CLOCK**, press **CLOCK**."
2. Press **CLOCK** again and the system will announce the year.
3. Press **▶/SKIP** or **◀/REPEAT** until the system announces the correct year, then press **CLOCK**. The system will announce the hour.
4. Press **▶/SKIP** or **◀/REPEAT**, until the system announces the correct hour, then press **CLOCK**. The system will announce the minute.
5. Press **▶/SKIP** or **◀/REPEAT** until the system announces the correct minutes, then press **CLOCK**. The system will announce the day.
6. Press **▶/SKIP** or **◀/REPEAT** until the system announces the correct day, then press **CLOCK**. The system will announce the new clock setting and return to idle mode.

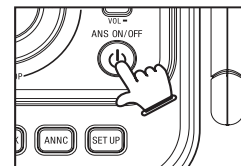


## Activate the answering system

The answering system must be turned on to function. If the answering system is turned off, the telephone base light will be off.

To turn on/off the answering system:

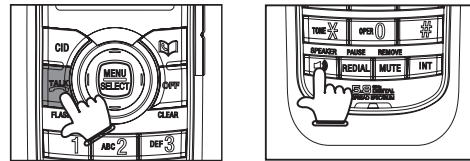
- Press **ANS ON/OFF** to turn on the answering system and press **ANS ON/OFF** again to turn it off.



## Make, receive and end calls

### Make a call

- Press **TALK/FLASH** or **SPEAKER** to ensure there is a dial tone, then dial the telephone number.



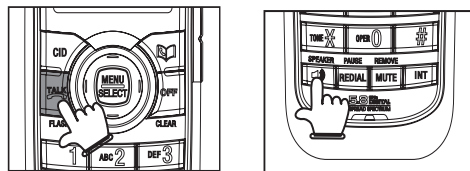
-OR-

For predialing:

1. Dial the number (press **MUTE/REMOVE** or **OFF/CLEAR** to backspace, or press and hold **REDIAL/PAUSE** to insert a pause).
2. Press **TALK/FLASH** or **SPEAKER** if you want to use the speakerphone function.

### Receive a call

- Press **TALK/FLASH** or **SPEAKER** or any dialing keys (**0-9**, **#**, **\***).



### End a call

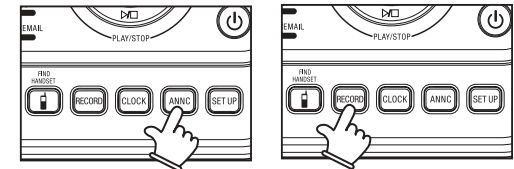
- Press **OFF/CLEAR** or put the handset in the telephone base or charger.

## Record outgoing announcement (optional)

The telephone is preset with a greeting that answers calls with "Hello, please leave a message after the tone." You can use this preset announcement, or replace it with your own. While in the **ANNC** menu, press **ANNC** again to exit at anytime.

To replace the default announcement:

1. Press **ANNC** while in idle mode and the system will announce "Announcement, press **PLAY** or press **RECORD**."
2. Press **RECORD** and the system announces "Record after the tone, press **STOP** when you are done."
3. After the tone, speak towards the microphone at the bottom front of the telephone base from about nine inches away.
4. Press **▶/PLAY/STOP** when finished.
5. The answering system will automatically playback the newly recorded announcement and there will be a confirmation tone. Press **▶/PLAY/STOP** to stop the playback at anytime.
6. Press **▶/PLAY/STOP** again to replay the recorded announcement. Press **RECORD** to record again if you do not like the announcement just recorded. Press **ANNC** to exit and return to idle mode.



**NOTE:**  
For complete feature instructions, please refer to your user's manual.

## IMPORTANT!

If your product is not working properly:

- Refer to the **Troubleshooting** section of your user's manual.
- Visit our website at [www.vtechphones.com](http://www.vtechphones.com), or in Canada, [www.vtechcanada.com](http://www.vtechcanada.com).
- Call our customer service at 1 (800) 595-9511 or 1 (800) 267 7377 in Canada.

## Free Manuals Download Website

<http://myh66.com>

<http://usermanuals.us>

<http://www.somanuals.com>

<http://www.4manuals.cc>

<http://www.manual-lib.com>

<http://www.404manual.com>

<http://www.luxmanual.com>

<http://aubethermostatmanual.com>

Golf course search by state

<http://golfingnear.com>

Email search by domain

<http://emailbydomain.com>

Auto manuals search

<http://auto.somanuals.com>

TV manuals search

<http://tv.somanuals.com>