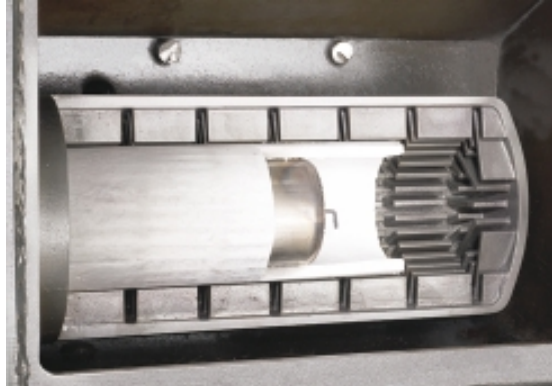


High-Efficiency Steamer

VULCAN
THE PREMIER COOKING LINE

Heavy-duty construction and reliable performance in a high-efficiency design that generates 5.5 BHP in a 24" footprint!



High-efficiency boiler uses a heavy-duty, cast iron, finned heat exchanger—40% more efficient than a typical boiler.



316 Series stainless steel compartment interior is more corrosion resistant; coved corners make for easier cleaning.



Interplumbed drip trough is hassle-free and eliminates the need to empty a drip pan (standard on all floor models and countertop VSX3, 4 and 5 units).



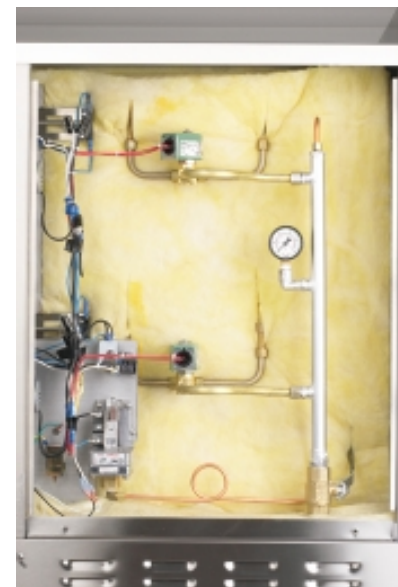
Tri-panel door construction with closed-cell silicone gasket provides structural integrity, longer life and better performance.



Heavy-duty "slammable" door stands up to real-world use.



Stainless steel, full-length hinge rod maintains structural integrity—stands up to repeated use.



All-metal plumbing helps keep maintenance to a minimum.



Non-corrosive, 10-gauge stainless steel frame ensures maximum life of the equipment.



**ONE
POWERFUL
PACKAGE**

Free Manuals Download Website

<http://myh66.com>

<http://usermanuals.us>

<http://www.somanuals.com>

<http://www.4manuals.cc>

<http://www.manual-lib.com>

<http://www.404manual.com>

<http://www.luxmanual.com>

<http://aubethermostatmanual.com>

Golf course search by state

<http://golfingnear.com>

Email search by domain

<http://emailbydomain.com>

Auto manuals search

<http://auto.somanuals.com>

TV manuals search

<http://tv.somanuals.com>