



FRYMATE-VX21MS SHOWN with Optional
Food Warmer and 85MF Mobile Filter



SPECIFICATIONS:

Free standing or "Add-On" Frymate™, Vulcan-Hart Model: FRYMATE-VX15, VX15S, VX21, VX21S and VX21MS. These "Add-On" Accessory Frymates can be securely attached to any gas or electric free-standing fryer or KleenScreen Plus® fryer battery. "Add-On" a Frymate to the left or right side of a fryer, or both sides. 18 gauge steel body with stainless steel front top, sides and door. Set of 4 casters (2 locking). Stainless steel sloped drain top with removable grease collector to allow for easy removal of food products and clean up. Easy access storage area behind door.

FRYMATE-VX21MS has the same features as the FRYMATE-VX21S with a 20.75" x 23.63" stationary shelf plus the added convenience for a place to store the Vulcan mobile filter 85MF.

Overall dimensions:

FRYMATE-VX15 = 15¹/₂"w x 30¹/₈"d x 36¹/₄"h working height.

FRYMATE-VX15S = 15¹/₂"w x 34³/₈"d x 36¹/₄"h working height.

FRYMATE-VX21 = 21"w x 30¹/₈"d x 36¹/₄"h working height.

FRYMATE-VX21S = 21"w x 34³/₈"d x 36¹/₄"h working height.

FRYMATE-VX21MS = 21"w x 34³/₈"d x 36¹/₄"h working height.

NSF listed.

STANDARD FEATURES

- Stainless steel front top, sides and door.
- Set of 4 adjustable casters (2 locking) on VX15, VX21, VX21S, & VX21MS.
- Set of 4 adjustable legs on VX15S.
- Stainless steel sloped drain top with removable grease collector.
- One year limited parts and labor warranty.

ACCESSORIES

- Tank cover (works as solid top work surface).
- Food Warmer with 2 year warranty.

FIELD INSTALLED TO VULCAN MODELS

- FRYMATE - VX15:** 1GR35M, 1GR45, 2GR45F, 3GR45F, 4GR45F, LG300, LG400.
- FRYMATE - VX15S:** 1ER50, 2ER50F, 3ER50F, 4ER50F.
- FRYMATE - VX21:** 1GR65, 2GR65F, 3GR65F.
- FRYMATE - VX21S:** 1GR85, 2GR85F, 3GR85F, 1ER85F, 2ER85F, 3ER85F.
- FRYMATE-VX21MS:** ALL FREE STANDING FRYERS-Please note that width and depth may not match fryer.



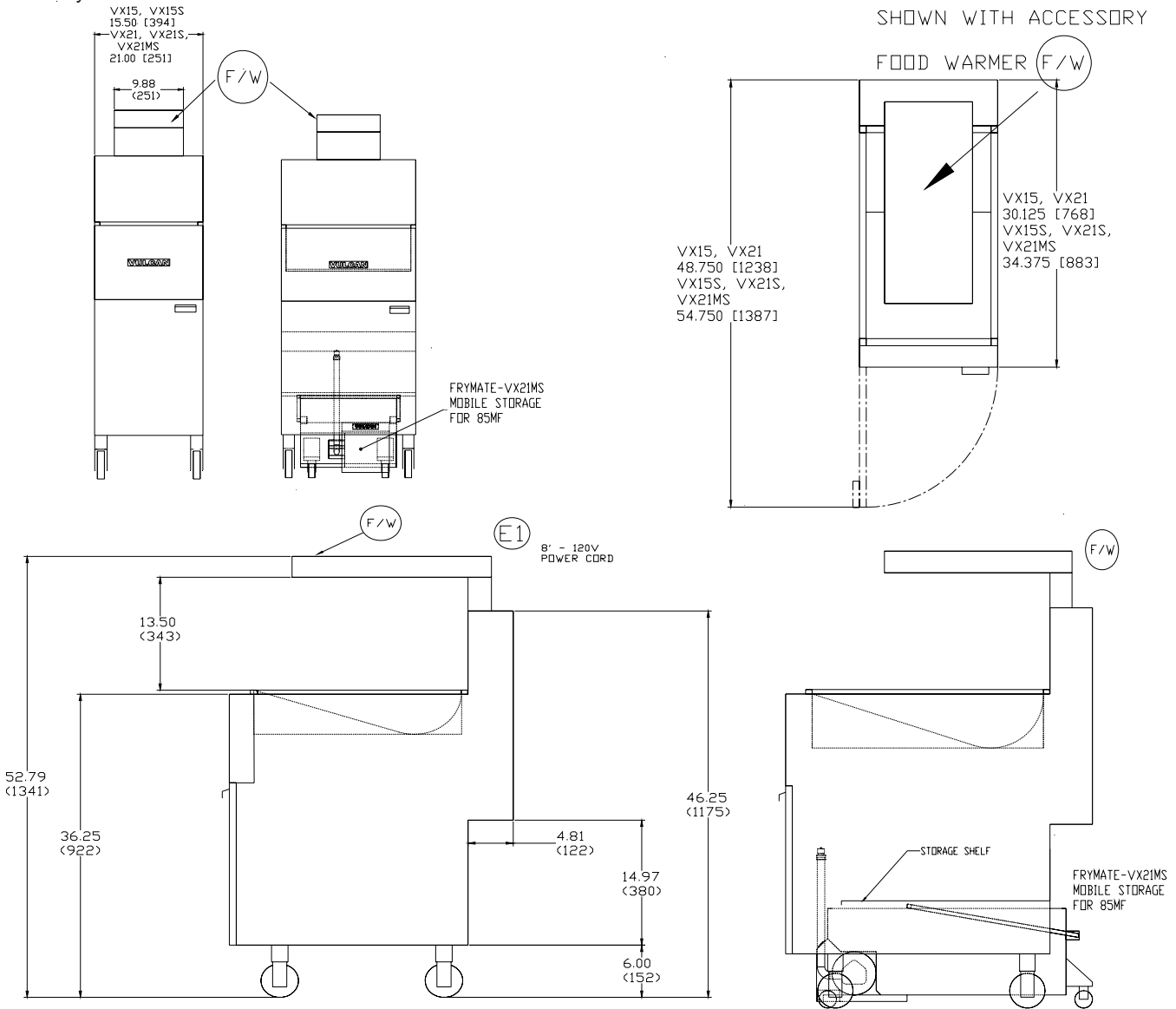
MODELS: FRYMATE VX15, VX15S
FRYMATE VX21, VX21S
FRYMATE VX21MS

IMPORTANT

1. An adequate ventilation system is required for Commercial Cooking Equipment. Information may be obtained by writing to the National Fire Protection Association, Batterymarch Park, Quincy, MA 02269. When writing refer to NFPA No. 96.
2. This appliance is manufactured for commercial installation only and is not intended for home use.

SERVICE CONNECTIONS:

- (E1) 8' 120 volt power cord supplied on optional food warmer. 120/60/1 electrical connection, 48 1/4" from floor.



MODEL	WIDTH	DEPTH	OVERALL HEIGHT	WORKING HEIGHT	TANK SIZE	BTU/HR.	FRY COMP. CAPACITY	APPOX. SHP. WEIGHT
FRYMATE-VX15	15.50"	30.125"	46.25"	36.25"	N/A	N/A	N/A	122 lbs. 55 kg
FRYMATE-VX15S	15.50"	34.375"	46.25"	36.25"	N/A	N/A	N/A	130 lbs. 59 kg
FRYMATE-VX21	21.00"	30.125"	46.25"	36.25"	N/A	N/A	N/A	165 lbs. 75 kg
FRYMATE-VX21S	21.00"	34.375"	46.25"	36.25"	N/A	N/A	N/A	173 lbs. 78 kg
FRYMATE-VX21MS	21.00"	34.375"	46.25"	36.25"	N/A	N/A	N/A	185 lbs. 84 kg

NOTE: In line with its policy to continually improve its products, Vulcan-Hart Company reserves the right to change materials and specifications without notice.

Free Manuals Download Website

<http://myh66.com>

<http://usermanuals.us>

<http://www.somanuals.com>

<http://www.4manuals.cc>

<http://www.manual-lib.com>

<http://www.404manual.com>

<http://www.luxmanual.com>

<http://aubethermostatmanual.com>

Golf course search by state

<http://golfingnear.com>

Email search by domain

<http://emailbydomain.com>

Auto manuals search

<http://auto.somanuals.com>

TV manuals search

<http://tv.somanuals.com>