

tSc

USER'S  
MANUAL  
INDOOR  
OUTDOOR  
SPEAKERS

tSc *the **Speaker** company*

### Thank you. And congratulations!

Our thanks for buying your new speakers from TSC. We sincerely appreciate your confidence in us and our products. Please read this Owner's Manual! It contains many tips on getting your new speakers set up, connected, and sounding as good as they should. We hope you find it clear, concise, and helpful.

Again, thank you.

## OUT OF THE BOX

You should save the carton and the inserts your speakers came in. You may need to ship your TSC speakers in the future and the packaging is designed to protect them from damage.

## WHERE SHOULD YOU PUT THEM?

Because they're so versatile, we realize that you may place your new Indoor/Outdoor speakers almost anywhere in or around your home. That being said, here are some guidelines you should find useful.

### Picking The Right Spot

We're going to assume that most will choose to put these speakers somewhere outside the home – beside a pool, near the barbecue, or close to an outdoor entertainment area, etc.

Before you select a place, ask yourself these questions:

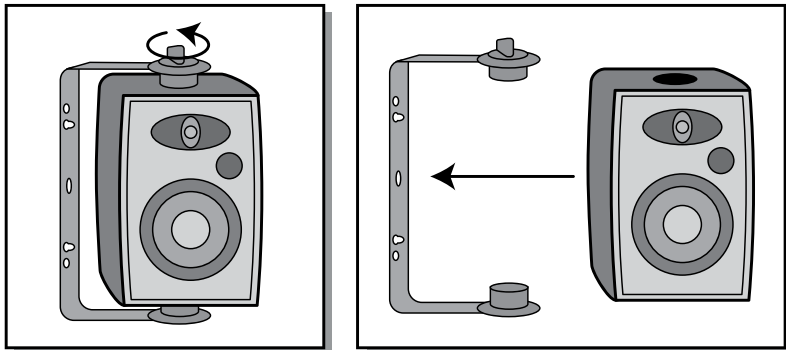
- Exactly what area do I want to provide high quality sound for?
- What is the best place to put the speakers so they can project sound into that area?
- Is there a solid surface – either horizontal or vertical – on which you can mount the speakers?
- Is there something that will shelter the speakers from prolonged, heavy rainfall or temperature extremes?
- How difficult will it be to run speaker wire from your receiver or amplifier to the speakers?

Once you selected the best spot to place your speakers, you're ready to move to the next step

## Mounting Your Speakers

Although you can place TSC's Indoor/Outdoor speakers on a shelf without the supplied brackets, we strongly suggest that you do not do so! The brackets are designed to hold the speaker securely under most wind and vibration conditions. Without a bracket, a passing breeze or enthusiastic pet or child could dislodge a speaker and possibly injure a passerby.

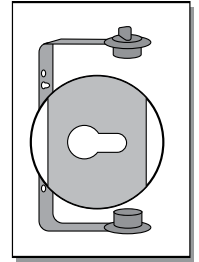
First, remove the bracket from the speaker by twisting the knurled end caps (one at each end of the speaker) counterclockwise. Once you've removed the end caps, the bracket detaches easily.



Mount the bracket securely to the surface you've chosen. Note that it's designed for either horizontal or vertical mounting to accommodate your needs.

For the most secure mounting, you should attach the bracket so that the screws or bolts you've used tap into a solid structural element such as a wall stud.

Use the "keyhole" slots if you wish to easily remove the speaker/bracket combination at some time in the future. For more permanent mounting, use the slots or the circular hole in the center of the bracket. If you opt for this "permanent" mounting method, remember that you'll need to detach to speaker from the bracket (and disconnect the speaker wires, too) when you want to move it.



Once the bracket is securely mounted:

- Position the speaker between the ends of the bracket
- Insert the threaded portion of one end cap through the bracket hole into the speaker housing. Gently tighten the end cap.
- Repeat this at the other end of the bracket/speaker assembly.
- Rotate the speaker until it points in the direction you've chosen.
- Tighten both end caps to lock the speaker into position. **DO NOT OVERTIGHTEN!!!**

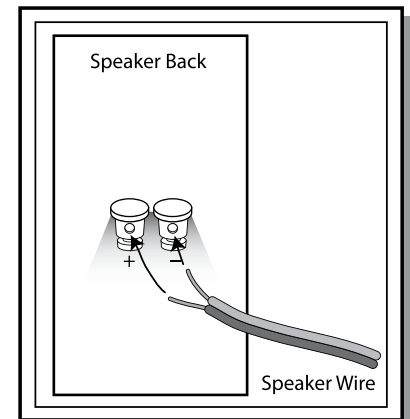
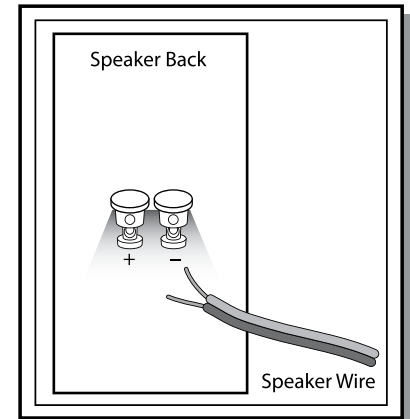
## Connecting Your Speakers

**Before you begin connecting your speakers, turn your system components OFF. That way, you won't run any chance of "shorting" your amplifier and possibly damaging it as you're hooking up your speakers. And, of course, turn your system back ON when you're done!**

Now that you've got your speaker placed properly, it's time to connect them.

TSC's Indoor/Outdoor speakers have two spring-loaded terminals for connecting the speaker cable from your amplifier. One of these has a red marker on it (positive or "+"), the other black (negative or "-"). The terminals are gold-plated, too, for long-term corrosion resistance.

Now look at your speaker wire. You'll see that it has two conductors separated by insulation and identified by color (if the insulation is clear) or by differences in the insulation itself (ridged vs. plain is the most common). Choose one conductor to carry the "+" signal and the other for the negative signal. It makes no difference which one you pick – just maintain that choice for all your connections.



## Proper Phasing

Why are we placing as much emphasis on consistency here? We want you to get all the performance you've paid for!

When your amplifier-to-speaker connections are consistent (when "+" is always connected to "+" and "-" is always connected to "-"), your speakers are connected "in phase." That means the drivers in each speaker will push out when they get a common positive signal from an amplifier and pull in when they get a negative signal.

When speakers are connected "out of phase," the drivers fight each other – some move out while others move in. The result? You'll get less bass and blurred imaging. That's a pretty heavy price to pay for not taking just a few extra seconds to make sure your connections are correct.

### Some Advice On Speaker Wire

**Please use 16 gauge wire if your amplifier-to-speaker runs are under 50'. For longer runs, we strongly suggest 14 gauge. For your reference, standard "lamp cord" available at most hardware stores is 18 gauge. Better to use heavier wire such as 16 or 14 gauge.**

To connect your speaker wire to the speakers, follow these simple steps:

- Strip about 3/8" of the insulation off both speaker wire conductors with a wire stripper or sharp knife.
- Connect the "+" conductor of your speaker wire to the "+" terminal on your speaker by pressing the top of the connector down until you can see a hole in the shaft of the connector.
- Insert the stripped conductor into the hole.
- Let go of the connector so that it springs back into position, thereby locking the speaker wire conductor into place.
- Repeat the last two steps with the wire's "-" conductor and the speaker's "-" terminal.

Remember to leave some slack in the wire so you can rotate the speaker if needed.

You may want to insulate the connections with electrical or weather resistant tape or use heat shrink tubing. You can apply tape after you make the connections but heat shrink tubing needs to be in place before you connect wire to speaker. Read the instructions supplied with the tubing before use.

### Note:

**Depending on how you've mounted the bracket and where you're aiming the speaker, you may need to leave the speaker loose in the bracket until you've connected it to your amplifier. That's fine. Just remember to tighten everything up when you're done.**

## BREAK-IN

Many people believe speakers improve with age.

With TSC speakers, you'll notice a change in timbre, responsiveness, and sheer musicality as you use them because the drivers "settle in" with use.

How long should you wait? That depends, for example, on whether you listen AM radio at low volume or full orchestral music at live concert levels. In general, you'll begin to hear differences after 20-30 hours of use.

## CARE

Your TSC Indoor/Outdoor speakers don't need much maintenance. Wipe them occasionally with a damp cloth to keep the enclosures clean. And keep the grills on so kids (and some adults, too!) aren't tempted to push in the drivers.

Above all, enjoy! That's what your TSC speakers were designed for and why we take such pride in bringing them to you!



## Free Manuals Download Website

<http://myh66.com>

<http://usermanuals.us>

<http://www.somanuals.com>

<http://www.4manuals.cc>

<http://www.manual-lib.com>

<http://www.404manual.com>

<http://www.luxmanual.com>

<http://aubethermostatmanual.com>

Golf course search by state

<http://golfingnear.com>

Email search by domain

<http://emailbydomain.com>

Auto manuals search

<http://auto.somanuals.com>

TV manuals search

<http://tv.somanuals.com>