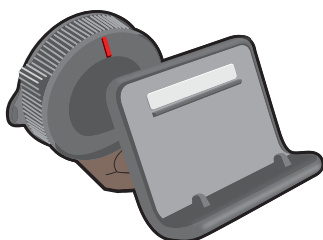

TomTom GO

1. What's in the box

- TomTom GO



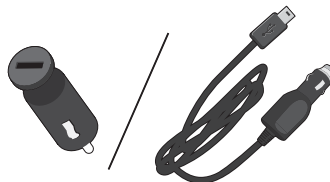
- Easy Click mount



- USB cable



- USB car charger / RDS-TMC Traffic Receiver



- Installation poster

2. Read me first

EasyClick mount

Use the EasyClick mount to install your TomTom GO inside your car.

Make sure that both the EasyClick mount and your windscreen are clean and dry before you attach the mount. Place the EasyClick mount so that it does not interfere with your view of the road or of any of the controls in your car.

To attach the EasyClick mount, press the suction cup firmly against the windscreen on an area where the glass is flat. Then twist the rubber grip near the base of the mount in a clockwise direction until you hear a click.

Plug the cable into your car dashboard and connect the other end to the bottom of your device.

Switching on and off

To switch on your navigation device, press and hold the On/Off button until you see the start-up screen. The first time you switch on your device, it may take a short time to start.

Setting up

Important: Take care to select the correct language, since the language you choose will be used for all menus and written instructions.

When you first switch on your device, you have to answer a few questions to set up the device. Answer the questions by tapping the screen.

GPS reception

When you first start your TomTom GO navigation device, the device may need a few minutes to determine your GPS position and show your current position on the map. In future, your position will be found much faster, usually within a few seconds.

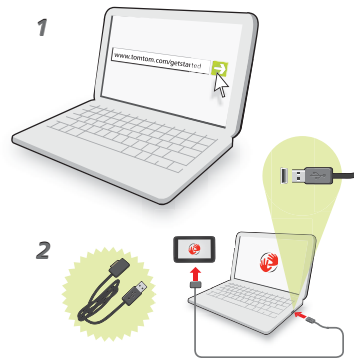
To ensure good GPS reception, you should use your device outdoors. Large objects such as tall buildings can sometimes interfere with reception.

About MyTomTom

MyTomTom helps you manage the contents and services of your TomTom GO navigation device, as well as giving you access to the TomTom community. You log in to MyTomTom on the TomTom website. It is a good idea to frequently connect your navigation device to MyTomTom, to ensure you always have the latest updates.

Tip: We recommend using a broadband internet connection whenever you connect your navigation device to MyTomTom.

Setting up MyTomTom



To set up MyTomTom, do the following:

1. Connect your computer to the internet.
2. Start a browser and go to **tomtom.com/getstarted**.
3. Click **Download now**.

Your browser downloads the TomTom driver, which you need to install on your computer in order to connect your device to MyTomTom. Follow the instructions on the screen if you are asked questions while downloading.

4. When prompted, connect your device to your computer using the USB cable. Then switch your device on.

Your device is then recognised, backed up and the latest updates are installed.

Important: You should plug the USB connector directly into a USB port on your computer and not into a USB hub or USB port on a keyboard or monitor.

Once the TomTom driver is installed, you can access MyTomTom from the notification area on your desktop.

Tip: When you connect your navigation device to your computer, MyTomTom tells you if there are any updates for your device.

Device not starting

In rare cases, your TomTom GO navigation device may not start correctly or may stop responding to your taps.

First, check that the battery is properly charged. To charge the battery, connect your device to the car charger. It can take up to 2 hours to fully charge the battery.

If this does not solve the problem, you can reset the device. To do this, press and hold the On/Off button for 15 seconds and release the button when your device begins to restart.

Charging your TomTom GO

The battery in your TomTom GO navigation device charges when you connect it to the car charger or to your computer.

The light on the On/Off button is orange while the battery is charging and is green when the battery is fully charged.

Important: You should plug the USB connector directly into a USB port on your computer and not into a USB hub or USB port on a keyboard or monitor.

Safety Notice

Your TomTom navigation device contains a GSM/GPRS module which can interfere with electrical devices such as cardiac pacemakers, hearing aids and aviation equipment.

Interference with these devices may endanger the health or life of others.

Do not use near unprotected electrical units or in areas where the use of mobile telephones is prohibited, such as hospitals and airplanes.

Take care of your navigation device

Never leave your TomTom GO or accessories on view when you leave the car as they may become an easy target for thieves.

It is important to take care of your device:

- Your device is not designed for use in extreme temperatures and any such exposure may cause permanent damage. Extended exposure to sun light may lead to early deterioration in battery performance.
- Do not open the casing of your device under any circumstances. Doing so may be dangerous and will invalidate the warranty.
- Wipe or dry the screen of your device using a soft cloth. Do not use any liquid cleaners.

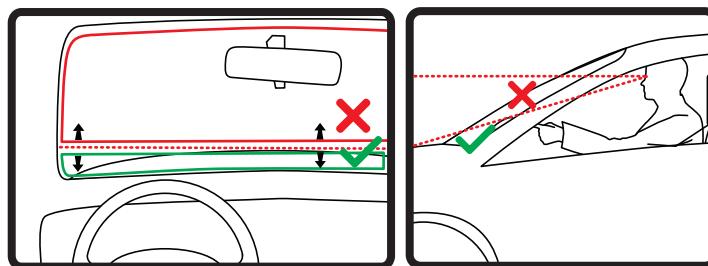
3. Safety

Positioning the EasyClick Mount

Consider carefully where to attach the mount in your car. The mount should not block or interfere with any of the following:

- Your view of the road
- Any of the controls in your car
- Any of your mirrors
- The airbag

When your navigation device is in the mount, you should be able to reach the device easily without leaning or stretching. You can attach the mount to the windscreen, side window or use a Dashboard Mount Disk to attach the mount to your dashboard. The following diagrams show where you can safely attach the mount.



TomTom also offers alternative mounting solutions for your TomTom navigation device. For more information about Dashboard Mount Disks and alternative mounting solutions, go to tomtom.com/accessories.

Safety settings

We recommend using the safety settings to make your driving as safe as possible.



These are some of the options included in the safety settings:

- Show essential menu buttons while driving
- Show safety reminders
- Warn when driving faster than allowed

You can also drive more safely by using voice commands to control your TomTom GO.

4. Planning a route

Important: In the interest of safety and to reduce distractions while you are driving, you should always plan a route before you start driving.

To plan a route on your TomTom GO, do the following:

1. Tap the screen to open the Main menu.



2. Tap **Navigate to...**
3. Tap **Address**.

Tip: The first time you plan a route, you are asked to select a country, state or region. Your selection is saved and used for all future routes until you change this setting.

You can change this setting by tapping the flag before you select a city.

4. Enter the town or city name.

Tip: Instead of typing the address, tap the microphone button to enter the address by speaking to your GO.

- Towns with similar names are shown in the list while you type.
- When the correct city or town appears in the list, tap the name to select the destination.



5. Enter the streetname.
 - Streets with similar names are shown in the list while you type.
 - When the correct streetname appears in the list, tap the name to select the destination.



6. Enter the house number, then tap **Done**.



7. The location is shown on the map. Tap **Select** to continue or tap **Back** to enter another address.

Tip: If you want your final destination to be a car park, tap **Park nearby** and select a location from the list of car parks close to your general destination.



8. Select the type of route you want to plan.



9. When the new route is shown, tap **Done**.
- For more information about the route, tap **Details**.
 - To plan a different route, tap **Change route**.



Your TomTom GO starts to guide you to your destination, using spoken instructions and onscreen directions.

Route summary

The route summary shows an overview of your route, the remaining distance to your destination and the remaining estimated journey time.

To view the route summary, tap the right-hand panel on the status bar in the Driving view or tap **View route** in the Main menu and then tap **Show route summary**.

When used with TomTom Traffic, the route summary shows an overview of your route, the remaining distance to your destination, the remaining estimated journey time and traffic information about delays on your route.



LIVE summary

LIVE summary shows LIVE services information on your route.

To view LIVE summary information, tap the LIVE tab on the route summary screen. Tap any of the panels for more detailed information.



The LIVE tab panels show the following information:

- **Traffic on route** - tap this panel to view detailed information about traffic delays and other incidents on your route.
- **Speed cameras** - tap this panel to open the Speed Camera menu. You can then report a speed camera or change your settings for speed camera warnings.
- **Weather** - tap this panel to view the latest weather reports.

Note: Not all LIVE services are available in all countries. You may be able to use LIVE services when travelling abroad. For more information on available services, go to tomtom.com/services.

Using your voice to plan a route

Instead of tapping the screen to plan a route, you can use your voice to plan a route.

For information about planning a route using your voice, see *Voice command and control*.

Frequent destinations

If you often make trips to the same destinations, you can set your TomTom GO to ask if you want to plan a route to one of these locations, every time the device starts. This is faster than planning a route in the normal way.

To select a new destination, tap **Start-up settings** in the Settings menu and select **Ask for a destination**. Then select a button to use for this destination and answer the questions about the destination.



Show my frequent destinations

You can set your TomTom GO to ask if you want to plan a route to one of your frequently visited destinations every time the device starts.

To change this setting, do the following:

1. Tap **Start-up settings** in the Settings menu and then select **Ask for a destination**.
2. Tap **Yes**, then tap **Yes** again to begin entering information about the destination.
3. Select a symbol for the destination and tap **Done** to set the symbol, then tap **Yes**.

Tip: To add new destinations, select one of the numbered symbols and enter a name for the new destination button.

4. Tap **Yes** and if required enter a new name, then tap **Done**.
5. Enter the address details in the same way you enter an address when planning a route, then tap **Done**.
6. If you want to set more destinations, repeat the steps above. Otherwise, tap **Done**.
You are asked if you want to change the start-up image.
7. If you want to change the image, tap **Yes** then follow the instructions shown on the screen. Otherwise, tap **No**.

Every time your TomTom GO starts, you are asked if you want to plan a route. If you tap **Cancel**, you are shown the Main Menu.

Using arrival times

When you plan a route, your TomTom GO asks you if you need to arrive at a particular time.

Tap **YES** to enter a preferred arrival time.

Your GO calculates your arrival time and shows you whether you will arrive on time.

You can also use this information to work out when you need to leave. If your GO shows that you will arrive 30 minutes early, you can wait and leave in 30 minutes time, rather than arrive early.

Your arrival time is constantly recalculated during your journey. The status bar shows whether you will arrive on time or if you are going to be late, as shown below:



You will arrive 55 minutes before the arrival time you entered.

If the estimated arrival time is more than five minutes before the time you entered, it is shown in green.



You will arrive 3 minutes before the arrival time you entered.

If the estimated arrival time is less than 5 minutes before the time you entered, it is shown in yellow.



You will arrive 19 minutes late.

If the estimated arrival time is later than the time you entered, it is shown in red.



Status bar preferences

Tap **Status bar settings** in the Settings menu, to enable or disable arrival time notifications.

To enable arrival time notifications, select **Leeway**.

Navigation menu options

When you tap **Navigate to...**, you can set your destination in many ways, not just by entering the address. The other options are listed below:



Local search

Tap this button to use TomTom Local Search with Google to help you find shops and businesses in and around your current location.

You can choose to search for shops and businesses near you, near your destination, near any other destination or in a city.

For example, if you are looking for a swimming pool near your current location, enter 'swimming pool' and choose the best search result.



Home

Tap this button to navigate to your Home location.

You will probably use this button more than any other.



Favourite

Tap this button to select a Favourite as your destination.



Address

Tap this button to enter an address as your destination.



Recent destination

Tap this button to select your destination from a list of places you have recently used as destinations.



Point of Interest

Tap this button to navigate to a Point of Interest (POI).



Point on map

Tap this button to select a point on the map as your destination using the map browser.



Latitude Longitude

Tap this button to enter a destination using latitude and longitude values.



Position of last stop

Tap this button to select your last recorded position, as your destination.

Planning a route in advance

You can use your TomTom GO to plan a route in advance, selecting your starting point and your destination.

Here are some more reasons to plan a route in advance:

- Find out how long a journey is going to take before you start.

You can also compare journey times for the same route at different times of the day or on different days of the week. Your GO uses IQ Routes when planning a route. IQ Routes calculates routes based on the real average speeds measured on roads.

- Study the route of a journey you are planning.
- Check a route for someone who is coming to visit you and then explain the route to them in detail.

To plan a route in advance, follow these steps:

1. Tap the screen to bring up the Main menu.
2. Tap the arrow button to move to the next menu screen and tap **Plan route**.



This button is shown while there is no planned route on your GO.

Prepare route

3. Select the starting point for your journey in the same way that you would select your destination.
4. Set the destination for your journey.
5. Choose the type of route that should be planned.
 - **Fastest route** - the route which takes the least time.
 - **Eco route** - the most fuel-efficient route for your journey.
 - **Shortest route** - the shortest distance between the locations you set. This may not be the quickest route, especially if the shortest route is through a town or city.
 - **Avoid motorways** - a route which avoids motorways.
 - **Walking route** - a route designed for making the journey on foot.
 - **Bicycle route** - a route designed for making the journey on a bicycle.
6. Choose the date and time that you will make the journey you are planning.

Your GO uses IQ Routes to work out the best possible route at that time. This is useful to see how long a journey takes at different times of the day or on different days of the week.

7. Your TomTom GO plans the route between the two locations you selected.

Viewing route information

You can access these options for the route you last planned by tapping **View route** in the Main Menu or the **Details** button on the route summary screen.

You can access these options for the route you last planned by tapping the **Details** button on the route summary screen.

You can then select from the following options:



Show instructions

Tap this button for a list of all the turn instructions on the route.

This is very useful if you need to explain a route to someone else.



Show map of route

Tap this button to see an overview of the route using the map browser.



Show route demo

Tap this button to watch a demo of the journey. You can interrupt the demo at any time by tapping the screen.



Show route summary

Tap this button to open the route summary screen.



Show destination

Tap this button to see a preview of your destination.

You can navigate to a car park near your destination, call your destination if a phone number is known, and view any available information about your destination.



Show traffic on route

Tap this button to see all the traffic incidents on your route.

Note: This button is only shown if your device has either an HD Traffic subscription or an RDS-TMC Receiver connected. Traffic information is not available in all countries or regions.

5. Voice control

About voice control

Instead of tapping the screen to control your TomTom GO, you can use your voice to control your GO.

For example, to increase the volume on your GO, you can say, "Increase volume."

To view the list of available commands, tap **Help** in the Main menu then tap **Product manuals** and then tap **What can I say?**

Important: Voice control requires a computer voice. When there are no computer voices installed on your TomTom GO, this feature is not available.

To select a computer voice, tap **Voices** in the Settings menu, then tap **Change voice** and select a computer voice.

Using voice control

To enable voice control and show the button in the Driving view, tap **Make your own menu** in the Settings menu and select the checkbox for **Voice control**.

To switch off voice control and remove the button from the Driving view, tap **Make your own menu** in the Settings menu and clear the checkbox for **Voice control**.

The following example shows how to use voice control to plan a journey to your Home address.

1. Tap the microphone button in the Driving view to turn on the microphone.

The microphone monitor is shown on the right-hand side of the screen.



2. When you hear the tone, say, "Navigate to Home".

While you are speaking the microphone monitor shows how well the device can hear your voice:



A green bar means the device can hear your voice.

A red bar means your voice is too loud for the device to recognise individual words and understand everything you say.

A grey bar means your voice is too quiet for the device to recognise individual words and understand everything you say.

For some phrases, your GO repeats what you say and asks for confirmation.

3. If the command is correct, say, "Yes."

If the command is incorrect, say, "No" and repeat the command after you hear the tone.
Your GO plans a route from your current location to your Home address.

Tip: To stop your GO from listening out for further commands, say "Back" or "Cancel" or "Quit" or simply tap the screen.

Planning a journey using your voice

Important: In the interest of safety and to reduce distractions while you are driving, you should always plan a route before you start driving.

Note: *It's not possible to plan a route using your voice for all maps in all countries, or in all languages.*

To plan a route to an address using speech, do the following:

1. Tap the voice control button in the Driving view.
2. When you hear the tone, say, "Navigate to address".
3. Say the name of the town.

Your GO shows a list of towns which sound similar to what you said and tells you which town is at the top of the list.



If the town you hear is the same as the town you requested then say, "Done" or "OK" or "Yes" or "One" or tap the town at the top of the list.

If the town you hear is incorrect, but the correct town is in the list, say the number next to the correct town or tap the name of the town.

For example, if the correct city is Rotterdam and this town is shown at the third item in the list, you can say, "Three" or tap the name, **Rotterdam**.

If the name is not in the list, then say "Back" or "No" or tap **Back** to return to the previous screen and say the town again when you hear the tone.

4. Say the streetname.

Your GO shows a list of streetnames which sound similar to what you said and tells you which streetname is at the top of the list.

If the streetname you hear is the same as the streetname you requested then say, "Done" or "OK" or "Yes" or "One" or tap the streetname at the top of the list.

Tip: Different locations may have the same name, such as a road that spans multiple post-codes. When this happens you need to look at the screen and tap the correct location.

If the street name you hear is incorrect, but the correct streetname is in the list, say the number next to the correct streetname or tap the streetname in the list.

If the streetname is not shown in the list, say "Back" or "No" or tap **Back** to return to the previous screen and then say the streetname again when you hear the tone.

5. Say the house number.

Important: Numbers need to be spoken in the same language as the button names and menus on your TomTom GO.



Numbers should be pronounced in the same way you normally say a number, in one continuous sentence. So 357 is pronounced, "Three hundred and fifty seven."

If the number is shown correctly then say, "Done" or "OK" or tap the keyboard to enter the number.

If the number is shown incorrectly then say, "Back" or "No" or tap the Backspace key and repeat the number.

Tip: If you say, "Back" when there are no numbers on the screen, your GO will return you to the previous screen.

When the number is shown correctly say, "Done" or "OK." Alternatively, enter the number by tapping the screen.

6. When the route has been calculated and the route summary is shown, tap **Done**.

Your TomTom GO starts to guide you to your destination, using spoken instructions and onscreen directions.

Entering addresses using your voice

Important: In the interest of safety and to reduce distractions while you are driving, you should always plan a route before you start driving.

Even if you don't use voice control to start planning a journey, you can still use your voice to enter the address.

To start planning a journey tap **Navigate to...** in the Main menu, then tap **Address**.

To enter the destination using your voice, tap one of the following buttons:



Tap this button to enter an address entirely using speech.

Spoken address helps you to enter information without tapping the screen.

This option recognises the following spoken terms:

- Commands: Yes, No, Back, Done, OK, Crossing.
- Streetnames.
- Cities and towns and their centres.
- Favourites, postcodes and POIs.
- Plan alternative route, Recalculate original, Avoid roadblock, Minimise delays, Clear route, Travel via... and Recent destination.
- Numbers. These should be pronounced in the same way you normally say a number, in one continuous sentence. So 357 is pronounced, "Three hundred and fifty seven."



Tap this button at the base of the keyboard to use speech to enter an address. When the button is grey, you cannot use speech to enter an address.

This button is available for the for the following types of destination:

- **City centre** - to select a city or town centre.
- **Street and house number** - to select an address.
- **Crossing or intersection** - to select the point where two streets meet.

Tips:

- Your GO recognises places and streetnames when they are spoken in the local language using local pronunciation.
 - Spoken address entry is not possible for postcodes which must be entered using the keyboard.
 - Spoken address entry is not available for all maps in all countries.
-

6. Driving View

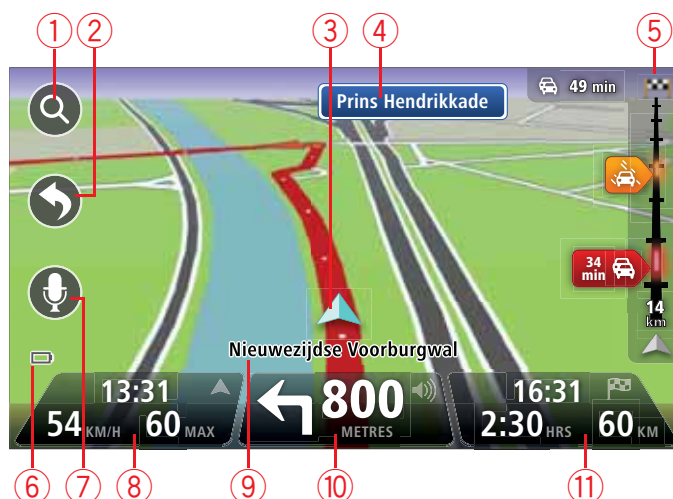
About the Driving View

When your TomTom GO device starts for the first time, you are shown the Driving View along with detailed information about your current position.

Tap the centre of the screen at any time to open the Main Menu.

You can choose the screen shown when you switch on your device by tapping **Settings** in the Main Menu, then tapping **Start-up settings**.

The Driving View



1. Zoom button - tap the magnifying glass to show buttons for zooming in and out.
2. Quick menu - to enable the quick menu, tap **Make your own menu** in the Settings menu.
3. Your current position.
4. Road sign information or the next street name.
5. Traffic sidebar. Tap the sidebar to open the Traffic menu.
6. Battery level indicator.
7. Microphone button for voice command and control.
8. The time, your current speed and the speed limit, if known. To see the difference between your preferred arrival time and your estimated arrival time, check the **Leeway** checkbox in the Status bar settings.

Tap this part of the status bar to switch between a 3D map and a 2D map.

9. The name of the street you are on.

10. Navigation instruction for the road ahead and the distance to next instruction. If the second instruction is less than 150m after the first instruction, you see it shown immediately instead of the distance.

Tap this part of the status bar to repeat the last voice instruction and to change the volume. You can also tap here to mute the sound.




11. The remaining journey time, the remaining distance and your estimated arrival time.

Tap this part of the status bar to open the Route Summary screen.

To change the information shown in the status bar, tap **Status bar** in the Settings menu.

Driving View symbols

The following symbols are shown in the Driving View:

	Mobile phone not connected - this symbol is shown when the selected mobile phone is not connected to your device. You must have already established a connection to this phone.
	Sound muted - this symbol is shown when the sound has been muted. To turn the sound back on, tap the middle panel in the status bar.
	Battery - this symbol is shown when the battery level is low. When you see this symbol, you should charge your navigation device as soon as possible.

7. Advanced Lane Guidance

About lane guidance

Note: Lane guidance is not available for all junctions or in all countries.

Your TomTom GO helps you prepare for motorway exits and junctions by showing the correct driving lane for your planned route.

As you approach an exit or junction, the lane you need is shown on the screen.

Using lane guidance

There are two types of lane guidance:

- Lane images



To turn lane images off, tap **Settings** in the Main Menu, then tap **Advanced settings**. Clear the checkbox for **Show lane images**.

Tip: Tap anywhere on the screen to return to the Driving View.

- Instructions in the status bar



Tip: If no lane guidance is shown in the status bar and all lanes are highlighted, you can use any lane.

8. Making changes to your route

About route changes

After you plan a route, you may want to change the route or even the destination. There are various ways to change your route without the need to completely replan the entire journey.

To change the current route, tap **Change route** in the Main menu:



Change route

Tap this button to change the current route.

This button is only shown while there is a planned route on your GO.

Change route menu

To change the current route or your destination, tap one of the following buttons:



Calculate alternative

Tap this button to find an alternative to the current route.

This button is only shown while there is a planned route on your GO.

This is a simple way to search for a different route to your current destination.

Your GO calculates a new route from your current location, to reach your destination using completely different roads.

The new route is shown next to the original route so that you can select the route you want to use.



Avoid roadblock

Tap this button while driving on a planned route, to avoid a roadblock or traffic congestion on the road ahead.

Your GO will suggest a new route which avoids the roads on your current route for the selected distance.

If the roadblock or traffic congestion suddenly clears, tap **Recalculate route** to replan your original route.

Important: Be aware that when a new route is calculated, you might immediately be asked to turn off the current road.



Tap this button to avoid traffic delays on a planned route.

It is not always possible to avoid all traffic delays. Your GO will check for traffic delays on your route and calculate the best route to avoid all or most of the delays.

Note: This button is only available when Traffic is enabled in the LIVE services menu. For more information about TomTom traffic information services, go to tomtom.com/services.



Tap this button to change the current destination.

When you change the destination, you are shown the same options and asked to enter the new address in the same way as when you plan a new route.



Tap this button to avoid part of the current route.

You are shown a list of the streetnames on your route. When you tap one of the streetnames, your GO calculates a detour to avoid the selected street. The route summary shows both the new route and your original route. Tap the panel on the right to select one of the routes and then tap **Done**.

If you do not want to use either of the routes shown in the route summary, tap **Change route** to find another way to alter your route.



Tap this button to change your route by selecting a location you want to travel past, maybe so you can meet someone on the way.

When you select a location to travel past, you are shown the same options and asked to enter the new address in the same way as when you plan a new route.

Your GO calculates the route to your destination via the selected location.

The selected location is shown on the map using a marker. You can only select one location to travel past on a route.

Unlike the warning which is given when you reach your destination, no warning is given when you travel past a marked location.

9. View map

About viewing the map

You can view the map in the same way as you might look at a traditional paper map. The map shows your current location and many other locations such as Favourites and POIs.

To view the map in this way, tap **View map** or **View route** in the Main menu.

You view different locations on the map by moving the map across the screen. To move the map, touch the screen and drag your finger across the screen. You can also zoom in and out by touching the screen with your thumb and forefinger and sliding your fingers in and out.

To select a location on the map, tap the location on the map. The cursor highlights the location and displays useful information about the location in an information panel. Tap the information panel to create a Favourite or plan a route to that location.

View map



1. The scale bar

2. Traffic - current traffic incidents. Use the Options button to select whether traffic information is shown on the map. When traffic information is shown on the map, POIs and Favourites are not shown.

Note: To use a TomTom traffic information service, you may need a subscription or a receiver. Traffic services are not supported in all countries. For more information and to subscribe, visit tomtom.com/services.

3. Marker

Markers point to your current location (blue), your home location (yellow) and your destination (red). The marker shows the distance to the location.

Tap a marker to centre the map on the location pointed to by the marker.

You can also set your own marker. Tap the cursor button, then tap **Set marker position** to place a green marker at the cursor position.

To turn markers off, tap **Options**, then **Advanced** and clear the **Markers** checkbox.

4. Options button

5. The cursor with streetname balloon.

Tap the button in the streetname balloon to open the cursor menu. You can navigate to the cursor position, make a Favourite of the cursor position, or find a Point of Interest near the cursor position.

6. The Find button

Tap this button to find specific addresses, favourites or Points of Interest.

7. The zoom bar

Zoom in and out by moving the slider.

Options

Tap the **Options** button to set the information shown on the map and show the following information:

- **Traffic** - select this option to show traffic information on the map. When traffic information is shown, POIs and Favourites are not shown.

Note: To use a TomTom traffic information service, you may need a subscription or a receiver. Traffic services are not supported in all countries. For more information and to subscribe, visit tomtom.com/services.

- **Names** - select this option to show street and city names on the map.
- **Points of interest** - select this option to show POIs on the map. Tap **Choose POI** to choose which POI categories are shown on the map.
- **Favourites** - select this option to show your Favourites on the map.

Tap **Advanced** to show or hide the following information:

- **Markers** - select this option to enable markers. Markers point to your current location (blue), your home location (yellow) and your destination (red). The marker shows the distance to the location.

Tap a marker to centre the map on the location which the marker is pointing to.

To create your own marker, tap the cursor button. Then tap **Set marker position** to place a green marker at the cursor position.

To disable markers, tap **Options**, then tap **Advanced** and unselect **Markers**.

- **Coordinates** - select this option to show GPS coordinates in the lower left corner of the map.

Cursor menu

The cursor can be used to do more than highlight a location on the map.

Position the cursor on a location on the map, then tap **Cursor** and then tap one of the following buttons:



Navigate there

Tap this button to plan a route to the cursor position on the map.



View location

Tap this button to view information about the location on the map such as the address.



Set marker position

Tap this button to create your own green marker and place it at the cursor position.

If a green marker exists, this button changes to **Delete marker**.



Find POI nearby

Tap this button to find a POI near the cursor position on the map.

For example, if the cursor currently highlights a restaurant location on the map, you can search for a nearby parking garage.



Correct location

Tap this button to make a map correction for the cursor position on the map.

You can make the correction only on your own map or you can share the correction with the TomTom Map Share community.



Call...

Tap this button to call the location at the cursor position.

This button is only available if your GO has the phone number for the location.

The phone numbers for many POIs are available on your GO.

You can also call phone numbers of your own POIs.



Add as Favourite

Tap this button to create a Favourite at the cursor position on the map.



Add as POI

Tap this button to create a POI at the cursor position on the map.



Travel via...

Tap this button to travel via the cursor position on the map as part of your current route. Your destination remains the same as before, but your route now includes this location.

This button is only available while there is a planned route.



Centre on map

Tap this button to centre the map on the cursor position.

10. Map corrections with TomTom Map Share™

About TomTom Map Share

TomTom Map Share helps you correct map errors and share map corrections with the rest of the TomTom Map Share community.

To correct your map and share map corrections with other Map Share users, tap **Map corrections** in the Services menu.

Map Share allows you to send and receive map corrections for one year after the new version of a map is released.

This means that one year after the release date, you can still correct your own map but you cannot send or receive map corrections until you upgrade your map to the latest version.

Note: *TomTom Map Share is not available in all regions. For more information, go to tomtom.com/mapshare.*

TomTom Map Share community

To join the Map Share community, do the following:

1. Tap **Map corrections** in the Services menu.
2. Tap **Corrections from others**.
3. Read the description, then tap **Join**.
4. Read the description, then tap **Continue**.
5. Select the category of Map Share corrections you want to use for your maps.
6. Tap **Done**.

When you connect your GO to your computer, MyTomTom downloads any new corrections and sends your corrections to the Map Share community.

Map corrections

Map corrections are reported by Map Share users and verified by TomTom.

- Corrections that are reported by Map Share community members include:

Changes to the traffic flow in a street, blocking or renaming a street and adding, removing or editing POIs.

These corrections are immediately shared with the Map Share community.

- Corrections that are reported by Map Share members and verified by TomTom include:

Missing streets, errors in motorway entrances and exits and missing roundabouts.

These corrections are investigated and verified by TomTom and are included when the next map version is released.

Map correction settings

You can decide which map corrections from the Map Share community are used to correct your maps. To select a category, tap **Map corrections settings** in the Map corrections menu.



There are three categories of map corrections:

- **Corrections verified by TomTom** - this category only includes corrections investigated by TomTom.
- **Corrections verified by TomTom or confirmed by many members** - this category includes corrections investigated by TomTom and corrections reported by a high number of Map Share community members.
- **All reported map corrections** - this category includes corrections investigated by TomTom and corrections reported by a high number of Map Share community members and corrections reported by only a few Map Share community members.

Downloading and sending map corrections

To download the latest new map corrections and to send your own corrections, connect your TomTom GO to MyTomTom.

If new map corrections are available for your maps, then your GO will automatically download the corrections and update your maps.

You can select the type of corrections you want to download, in the Map corrections settings menu on your GO.

Reporting a map error

If you find an error on your map, you can mark the location using the report button in the Driving view. You can then correct the error and send the correction when you have completed your journey.

For example, you are driving to a friend's house and you notice that the name of a street on your map is different from the name on the street sign. To mark the location for later correction, tap the report button and your GO will record the location.

Important: For safety reasons, do not enter the full details of a map correction while you are driving. Mark the location of the map error instead and enter the full details later.



To show the report button in the Driving view, do the following:

1. Tap **Map corrections** in the services menu.
2. Tap **Map correction settings**.
3. Select the type of corrections you want to download. Then tap **Done**.
4. Read the instructions on the screen. Then tap **Continue**.
5. Select how you want to share your map corrections. Then tap **Next**.
6. Select **Show report button**. Then tap **Done**.

The report button is shown on the left-hand side of the Driving view.

Correcting a map error



Correct a map error

Important: For safety reasons, do not enter the full details of a map correction while you are driving. Mark the location of the map error instead and enter the full details later.

To correct a map error, do the following:

1. Tap **Map corrections** in the services menu.
2. Tap **Correct a map error**.
3. Select the type of map correction you want to report.
4. Select how you want to select the location.
5. Select the location. Then tap **Done**.
6. Enter the details of the correction. Then tap **Done**.
7. Tap **Send**.

The correction is saved and the information is sent to Map Share.

Types of map correction

To make a correction to your map, tap **Map corrections** in the services menu, then tap **Correct a map error**. There are several types of map correction available.



Tap this button to block or unblock a street. You can block or unblock the street in one or both directions.

For example, to correct a street near to your current location, do the following:

1. Tap **(Un)block street**.
2. Tap **Near you** to select a street near your current location. You can select a street by name, a street near your Home location or a street on the map.
3. Select the street or section of a street you want to correct by tapping it on the map.

The street you select is highlighted and the cursor shows the name of the street.

4. Tap **Done**.

Your device shows the street and whether the traffic is blocked or allowed in each direction.



5. Tap one of the direction buttons to block or unblock the flow of traffic in that direction.
6. Tap **Done**.

The next time you connect your device to MyTomTom, your corrections are shared with the TomTom Map Share community.



Reverse traffic direction

Tap this button to correct the traffic direction of a one-way street, where the direction of traffic is different to the direction shown on your map.

Note: Reverse traffic direction only works for one-way streets. If you select a two-way street you will be given the chance to block/unblock the street rather than changing the direction.



Tap this button to change the name of a street on your map.

For example, to rename a street near to your current location:

1. Tap **Edit street name**.
2. Tap **Near you**.
3. Select the street or section of a street you want to correct by tapping it on the map.

The street you select is highlighted and the cursor shows the name of the street.

4. Tap **Done**.
 5. Type the correct street name.
 6. Tap **Done**.
-



Tap this button to change and report incorrect road turn restrictions.



Tap this button to change and report the road speed limit.



Tap this button to add or remove a roundabout.



Tap this button to add a new Point of Interest (POI).

For example to add a new restaurant near to your current location:

1. Tap **Add missing POI**.
2. Tap **Restaurant** in the list of POI categories.
3. Tap **Near you**.
4. Select the location of the missing restaurant.

You can select the location by entering the address or by selecting the location on the map. Select **Near you** or **Near home** to open the map at your current location or at your Home location.

5. Tap **Done**.
6. Type the name of the restaurant then tap **OK**.
7. If you know the telephone number of the restaurant you can type it, then tap **OK**.

If you don't know the number, just tap **OK** without typing a number.



Edit POI

Tap this button to edit an existing POI.

You can use this button to make the following changes to a POI:

- Delete the POI.
- Rename the POI.
- Change the telephone number of the POI.
- Change the category that a POI belongs to.
- Move the POI on the map.



Comment on POI

Tap this button to enter a comment about a POI. Use this button if you cannot edit the error with the POI using the **Edit POI** button.



Correct house number

Tap this button to correct the location of a house number. Enter the address that you wish to correct and then indicate on the map the correct location of that house number.



Existing street

Tap this button to edit an existing street. Once you have selected the street, you can select an error to report. You can select more than one type of error for a street.



Missing street

Tap this button to report a missing street. You have to select the start and end points of the missing street.



City

Tap this button to report an error about a city. You can report the following types of error:

- City is missing
- Wrong city name
- Alternative city name
- Other



Comment on POI

Tap this button to send a comment about a POI. You must select the POI, and then you can enter your comment.



Motorway entrance/exit

Tap this button to report an error about a motorway entrance or exit.



Postcode

Tap this button to report an error about a postcode.



Other

Tap this button to report other types of corrections.

These corrections are not immediately applied to your map. Your TomTom GO sends a special report to TomTom Map Share.

You can report missing streets, errors in motorway entrances and exits and missing roundabouts. If the correction you want to report is not covered by any of these report types, enter a general description then tap Other.

11. Sounds and voices

About sounds and voices

Your TomTom GO uses sound for the following:

- Driving directions and other route instructions
- Warnings that you set
- Hands-free phone calls

There are two types of voice available for your GO:

- Computer voices

Computer voices are generated by your GO. They provide route instructions and read aloud city and street names, traffic and weather reports, user messages and tutorials.

- Human voices

These are recorded by an actor and only provide route instructions.

About computer voices

Your TomTom GO uses text-to-speech technology and computer voices to read the street names on your map as it guides you on your route.

The computer voice analyses the whole phrase or sentence before speaking, to ensure that the sentence sounds as close as possible to natural speech.

Computer voices can recognise and pronounce foreign towns and street names. For example, the English computer voice can read and pronounce French street names.

Important: Computer voices are not available in all languages.

If you require a computer voice and your language is unavailable, then you need to install and use the English language computer voice. For more information on computer voices, go to tomtom.com/services.

Selecting a voice

To select a different voice on your TomTom GO, tap **Voices** in the settings menu. Then tap **Change voice** and select the required voice.

Changing the volume level

You can change the volume on your TomTom GO in several ways.

- In the Driving view.

Tap the central panel on the status bar and move the slider to adjust the volume. The last route instruction is played so you can hear the new volume level.

- In the Settings menu.

Tap **Settings** in the Main menu, then tap **Volume settings** and move the slider to adjust the volume. Tap **Test** to listen to the new volume level.

You can also set your GO to automatically adjust the volume inside the car in response to engine noise.

Automatic volume control

To set your TomTom GO to automatically adjust the volume, do the following:

1. Tap **Settings** in the Main menu.
2. Tap **Volume settings**.
3. Select **Link volume to noise level** to automatically adjust the volume inside the car in response to engine noise.
4. Tap **Done**.

12. Settings

About settings

You can change the way your TomTom GO looks and behaves. Most of the settings on your device can be accessed by tapping **Settings** in the Main Menu.

Use night colours / Use day colours



Use night colours

Tap this button to reduce the brightness of the screen and display the map in darker colours.

When driving at night or when driving through a dark tunnel, it is easier to view the screen and less distracting for the driver, if the brightness of the screen is dimmed.

Tip: Your GO has a light sensor to monitor changes to the available light in your car, such as when driving in and out of a tunnel. To automatically switch between night and day colours, tap **Brightness settings** in the Settings menu and select **Switch to night colours when dark**.



Use day colours

Tap this button to increase the brightness of the screen and display the map in brighter colours.

Turn off voice guidance / Turn on voice guidance



Turn off Voice guidance

Tap this button to switch off voice guidance. You will no longer hear spoken route instructions, but you will still hear information such as, traffic information and warnings.

Voice guidance is also switched off if you tap **Turn off sound** in the Settings menu.

Note: If you change the voice on your GO, then voice guidance is automatically switched on for the new voice.



Turn on Voice guidance

Tap this button to switch on voice guidance and hear spoken route instructions.

Phone settings



Phone settings

Tap this button to open the phone settings menu.

For more information on connecting your phone and making hands-free calls, see **Hands-Free calling**.

Status & Information



Status & Information

Tap this button to find technical information on your TomTom GO such as the device serial number and the map version.

You can also view the current status for GPS reception and your LIVE Services.

For more information on LIVE Services, see **LIVE Services**.

Manage Favourites



Manage Favourites

Tap this button to add, rename or delete Favourites.

Favourites provide an easy way to select a location without the need to enter the address. They do not need to be favourite places, they can simply be seen as a collection of useful addresses.

To create a new Favourite, tap **Add**. Then enter the location address in the same way that you enter an address when you plan a route.



To view or change an existing Favourite, tap one of the items in the list. To see more Favourites on the map, tap the left or right buttons.



Make your own menu



Make your own menu

Tap this button to add up to six buttons to your own personalised menu.

If there are only one or two buttons in your menu, both buttons are shown in the Driving view.

If you have three or more buttons in your menu, then a single button is shown in the Driving view which opens your menu when tapped.

Voices



Change voice

Tap this button to change the voice that gives spoken directions and other route instructions.

A wide range of voices are available. There are computer voices which can read street names and other information directly from the map and there are human voices which have been recorded by actors.



Voice settings

Tap this button to set the type of spoken directions and other route instructions your TomTom GO will read aloud.

Volume settings



Volume preferences

Tap this button set the volume level for your TomTom GO. Move the slider to change the volume.

Link volume to noise level

Select this option to set your GO to change the volume according to the background noise. The noise level is constantly monitored by the microphone on your GO. If there is a lot of noise in the car, your GO will automatically increase the volume.

For example, if you are driving on the motorway, which is often very noisy, the volume level on your GO will be increased. When you are driving more slowly again, the volume level will be lowered by your GO.

Speaker settings



Speaker settings

Tap this button to select the loudspeaker or loudspeaker connections that are used on your TomTom GO.

Start-up settings



Start-up settings

Tap this button to set what happens when your TomTom GO starts.

Set clock



Set clock

Tap this button to select the time format. As soon as you have a GPS fix, the time will be set automatically. If you don't have a GPS fix, you can choose to set the time manually.

MyTomTom account



MyTomTom
account

Tap this button to log in to your TomTom account.

You can only log in to one account at a time on your TomTom GO. If you have more than one account or several people share the same device, you can switch from one account to another as required.

Manage POIs



Manage POIs

Tap this button to manage your own POI categories and locations.

Tip: To report incorrect or missing information about an existing Point of Interest included with your map, use the Map Share service to share your corrections with the Map Share community.

You can set your GO to let you know when you are near to selected POI locations. In this way, you could for example, set the device to let you know when you are approaching a petrol station.

You can create your own POI categories and add your own POI locations to these categories.

You can for example, create a new POI category called, Friends. You could then add all your friend's addresses as POIs in this new category. If you add their phone numbers, you can call them on your mobile phone using the hands-free calling feature on your GO.

Tap the following buttons to create and maintain your own POIs.

- **Add POI** - tap this button to add a location to one of your own POI categories.
- **Warn when near POI** - tap this button to set your GO to warn you when you are near selected POIs.
- **Delete POI** - tap this button to delete one of your own POI categories.
- **Edit POI** - tap this button to edit one of your own POIs.
- **Add POI category** - tap this button to create a new POI category.
- **Delete POI category** - tap this button to delete one of your own POI categories.

Show POI on map



Show POI on map

Tap this button to select the types of Point of Interest (POI) you want to see on the map.

1. Tap **Show POI on map** in the Settings menu.
2. Select the POI categories you want to be shown on the map.
Tap **Search** and use the keyboard to search for a category name.
3. Select whether you want POIs to be shown in 2D or 3D views of the map.
4. Tap **Done**.

Point of Interest locations are shown on the map as symbols.

Change Home location



Change Home location

Tap this button to set or change your Home location. You enter the address in the same way as you do when you plan a route.

Your Home location provides an easy way to plan a route to an important location.

For most people, your Home location will be your home address. However, you might prefer to set the location to another regular destination, such as your workplace.

Switch map



Switch map

Tap this button to select the map you want to use for route planning and navigation.

Although you can store more than one map on the device, you can only use one map at a time for planning and navigation.

To switch from the current map to plan a route in another country or region, simply change this setting.

Note: When you first select a new map, you may need to connect to your MyTomTom account and activate the map.

Planning settings



Planning settings

Tap this button to set the way your TomTom GO calculates the routes that you plan.

Set the type of route you want your GO to calculate.

Tap **IQ Routes** to set if you want the device to use IQ Routes information to help find the best route.

Set whether you want your TomTom GO to replan the current route if a faster route is found while you are driving. This is useful if traffic builds up or clears, further ahead on your route.

Set whether you want to be warned if your route passes through an area where your map contains only limited information.

Set how your GO should manage toll roads and ferry crossings when the device calculates a route.

Set whether you want the route summary screen to close automatically after you plan a route. If you select **No**, then you will need to tap **Done** to close the route summary screen every time you plan a route.

Safety settings



Safety settings

Tap this button to select the safety features you want to use on your TomTom GO.

Change car symbol



Change car symbol

Tap this button to select the car symbol that shows your current location in the Driving view.

2D/3D settings



2D/3D settings

Tap this button to set the default view of the map. To switch between 2D and 3D views while driving, tap the centre part of the status bar in Driving View.

It is sometimes easier to view the map from above, such as when navigating a complex road network or when you are using your GO while walking.

The 2D view shows a two dimensional view of the map as though viewed from above.

The 3D view shows a three dimensional view of the map as though you are driving through the landscape.

The following buttons are available:

- **In 2D view: rotate map in direction of travel** - tap this button so the map is rotated automatically with the direction you are travelling always at the top.
- **Switch to 3D view when following a route** - tap this button to show the map automatically in 3D view when you are following a route.

Status bar settings



Status bar settings

Tap this button to select the information you want to see on the status bar.

- **Horizontal** - show the status bar at the bottom of the Driving view.
- **Vertical** - show the status bar on the right-hand side of the Driving view.
- **Maximum speed**

Important: The speed limit is shown next to your current speed and your speed is shown in red, if you drive faster than the speed limit.

Information about speed limits is not available for all roads.

- **Current time**
- **Remaining distance** - the distance to your destination.
- **Leeway** - your GO shows how late or early you will arrive, compared with your preferred arrival time that was set when you planned the route.

Change map colours



Change map colours

Tap this button to select the colour schemes for day and night map colours.

Tap **Search** to search for a colour scheme by typing the name.

To download more colour schemes, go to **tomtom.com**.

Brightness settings



Brightness settings

Tap this button to set the brightness of the screen. Move the sliders to adjust the brightness level.

To view the map and menus in day or night colours, tap **Use night colours** or **Use day colours** in the Settings menu.

To switch automatically between day and night colours, select the checkbox for this setting:

- **Switch to night colours when dark** - your GO uses a light sensor to detect the background light level. If this option is selected, your GO displays the menus and maps in night colours when it gets dark.

Keyboard settings



Keyboard settings

Tap this button to select the keyboards that should be available and the layout of the Latin keyboard.

You use the keyboard to enter names and addresses, such as when you plan a route or search for the name of a town or a local restaurant.

Change language



Change language

Tap this button to change the language used for all the buttons and messages you see on your GO.

You can choose from a wide range of languages. When you change the language, you are also given the opportunity to change the voice.

Set units



Set units

Tap this button to set the units used on your GO for features such as route planning and weather reports.

Operate left-handed / Operate right handed



Operate left-handed / Operate right-handed

Tap this button to make it easier for right- or left-handed operation.

This will affect items such as the zoom bar when you are viewing the map.

Battery saving settings



Battery saving settings

Tap this button to set the power saving features on your GO.

Advanced settings



Advanced settings

Tap this button to select the following advanced settings:

- **Show house number before street name** - when this setting is selected, addresses are shown with the house number followed by the streetname, such as **10 Downing street**.
- **Show street names** - when this setting is selected, street names are shown on the map in the Driving View. You do not need to select this option when your GO is set to read aloud street names using a computer voice.
- **Show next street name** - when this setting is selected, the name of the next street on your route is shown at the top of the Driving view.
- **Show current street name on map** - when this setting is selected, the name of the street you are on is shown at the bottom of the Driving view.
- **Show location preview** - when this setting is selected, a graphical preview of your destination is shown during route planning.
- **Enable automatic zooming in 2D view**
- **Enable automatic zooming in 3D view**
- **Show lane images** - when this setting is selected, a graphical view of the road ahead shows which lane you need when you approach a junction or motorway exit. This feature is not available for all roads.
- **Show tips**
- **Automatically adjust clock for time zone**

Reset factory settings



Reset factory settings

Tap this button to delete all your personal settings and restore the standard factory settings to your TomTom GO.

This is not a software update and will not affect the version of the software application installed on your GO.

Important: This feature deletes all your personal settings!

If you want to keep your personal information and settings, you should **perform a full backup** of your GO **before you reset the device**. You can then restore all your personal information and settings after you reset the device.

This includes items such as your Home and Favourite locations, your personal menu and your POI categories and POI locations.

13. Points of Interest

About Points of Interest

Points of Interest or POIs are useful places on the map.

Here are some examples:

- Restaurants
- Hotels
- Museums
- Parking garages
- Petrol stations

Tip: To report incorrect or missing information about an existing Point of Interest included with your map, use the Map Share service to share your corrections with the Map Share community.

Creating POIs

Tip: You can download POI sets and share your own POI sets using MyTomTom.

1. Tap the screen to open the Main Menu.
2. Tap **Settings**.
3. Tap **Manage POIs**.
4. If there are no POI categories or the one you want to use does not exist, tap **Add POI category** and create a new category.



Add POI category

Every POI must be assigned to a POI category. This means you need to have created at least one POI category before you can create your first POI.

You can only add POIs to POI categories you have created.

For more information on creating POI categories, read **Managing POIs**.

5. Tap **Add POI**.
6. Select the POI category you want to use for the new POI.
7. Tap a button to enter the POI address in the same way that you plan a route.



Tap this button to set your Home location as a POI.

This is useful if you decide to change your Home location, but first want to create a POI using the current Home address.



Tap this button to create a POI from a Favourite.

You might want to create a POI from a Favourite because you can only create a limited number of Favourites. If you want to create more Favourites you need to delete some Favourites. To avoid losing a Favourite, save the location as a POI before you delete the Favourite.



Tap this button to enter an address as a new POI.

When you enter an address, you can choose from four options.

- **City centre**
 - **Street and house number**
 - **Postcode**
 - **Crossing or intersection**
-



Tap this button to select a POI location from a list of places you have recently used as destinations.



Tap this button to use TomTom Local Search with Google to search for shops and businesses in and around your current location.

You can choose to search for shops and businesses near you, near your destination, near any other destination or in a city.

For example, if you are looking for a swimming pool near your current location, enter 'swimming pool' and choose the best search result.



Tap this button to add a Point of Interest (POI) as a POI.

For example, if you are creating a category of POIs for your favourite restaurants, use this option instead of entering the addresses of the restaurants.



Tap this button to add your current location as a POI.

For example, if you stop somewhere interesting, you can tap this button to create a new POI at the current location.



Tap this button to create a POI using the map browser.

Use the cursor to select the location of the POI, then tap **Done**.



Tap this button to create a POI by entering latitude and longitude values.



Spoken address

Tap this button to create a POI by saying the address.



Position of last stop

Tap this button to select the location where your GO was last docked.

The POI is created and saved in the selected category.

Using POIs to plan a route

When you plan a route, you can use a POI for the destination.

The following example shows how to plan a route to a car park in a city:

1. Tap **Navigate to...** in the Main menu.
2. Tap **Point of Interest**.
3. Tap **POI in city**.

Tip: The last POI you viewed on your GO is also shown in the menu.

4. Enter the name of the town or city and select it when it is shown in the list.
5. Tap the arrow button to expand the list of POI categories.

Tip: If you already know the name of the POI you want to use, you can tap **Search POI** to enter the name and select this location.

6. Scroll down the list and tap **Car park**.

The car park closest to your destination is shown at the top of the list.

The following table explains the distances shown next to each POI. How the distance is measured varies depending on how you initially searched for the POI:

- POI near you - distance from your current location
- POI in city - distance from the city centre
- POI near Home - distance from your Home location
- POI along route - distance from your current location
- POI near destination - distance from your destination

7. Tap the name of the car park you want to use and tap **Done** when the route has been calculated.

Your TomTom GO starts to guide you to the car park.

Tip: You can also use Local Search to find useful locations. For more information, about Local Search and other LIVE Services go to tomtom.com/services.

Show POI on map



Show POI on map

Tap this button to select the types of Point of Interest (POI) you want to see on the map.

1. Tap **Show POI on map** in the Settings menu.
2. Select the POI categories you want to be shown on the map.
Tap **Search** and use the keyboard to search for a category name.
3. Select whether you want POIs to be shown in 2D or 3D views of the map.
4. Tap **Done**.

Point of Interest locations are shown on the map as symbols.

Calling a POI

Many of the POIs on your TomTom GO include phone numbers. This means you can use your GO to call the POI and plan a route to the location of the POI.

For example, you can search for a restaurant that serves South-East Asian cuisine, call to reserve a table and plan a route to the restaurant, and all using your GO.

1. Tap the phone button in the Driving view.

If the button is not visible in the Driving view, tap **Make your own menu** in the settings menu and select **Call...** to display the button in the Driving view.

2. Tap **Point of Interest**.
3. Select how you want to search for the POI.

For example, if you want to search for a POI on your route, tap **POI along route**.

4. Tap the type of POI you want to call.

For example, if you want to call a cinema to reserve a ticket, tap **Cinema** and then select the name of the cinema you want to call. Then tap **Call** or **Dial** to make the phonecall.

Your GO uses your mobile phone to call the POI.

Setting warnings for POIs

You can set a warning sound or message to be played or displayed when you approach a selected type of POI, such as a petrol station.

The following example will show how to set a warning sound to be played when you are 250 metres from a petrol station.

1. Tap **Manage POIs** in the settings menu.
2. Tap **Warn when near POI**.
3. Scroll down the list and tap **Petrol station**.

Tip: To remove a warning, tap on the category name and then tap **Yes**. POI categories which have been set with a warning, have a sound symbol next to the category name.

4. Set the distance as 250 metres and tap **OK**.
5. Select **Sound effect** and then tap **Next**.
6. Select the warning sound for the POI and then tap **Next**.
7. If you only want to hear the warning when the POI is directly on a planned route, select **Warn only if POI is on route**. Then tap Done.

The warning is set for the selected POI category. You will hear a warning sound when you are 250 metres from a petrol station on your route.

Manage POIs



Manage POIs

Tap this button to manage your POI categories and locations.

Tip: To report incorrect or missing information about an existing Point of Interest included with your map, use the Map Share service to share your corrections with the Map Share community.

You can set your GO to let you know when you are near to selected POI locations. In this way, you could for example, set the device to let you know you when you are approaching a petrol station.

You can create your own POI categories and add your own POI locations to these categories.

This means you can for example, create a new POI category called, Friends. You could then add all your friend's addresses as POIs in this new category. If you add their phone numbers, you can call them on your mobile phone using the hands-free calling feature on your GO.

Tap the following buttons to create and maintain your own POIs.

- **Add POI** - tap this button to add a location to one of your own POI categories.
- **Warn when near POI** - tap this button to set your GO to warn you when you are near selected POIs.
- **Delete POI** - tap this button to delete one of your own POI categories.
- **Edit POI** - tap this button to edit one of your own POIs.
- **Add POI category** - tap this button to create a new POI category.
- **Delete POI category** - tap this button to delete one of your own POI categories.

14. Help

About getting help

Tap **Help** in the Main Menu to navigate to emergency services centres and other specialist services and contact them by phone.

For example, if you are involved in a car accident, you could use the Help menu to call the nearest hospital and tell them your exact location.

Tip: If you do not see the Help button in the Main Menu, tap **Settings** and then **Safety settings**. Clear the checkbox for **Show only essential menu options while driving**.

Using Help to phone a local service

To use Help to locate a service centre, contact the centre by phone and navigate from your current location to the centre, do the following:

1. Tap the screen to bring up the Main Menu.
2. Tap **Help**.
3. Tap **Phone for help**.
4. Select the type of service you require, for example, Nearest hospital.
5. Select a centre from the list, the nearest is shown at the top of the list.

Your GO shows your position on the map along with a description of the location. This helps you explain where you are while making a call.

If a phone is connected to your GO, your GO automatically dials the phone number. If no phone is connected, the phone number is displayed for you to call.

6. To navigate your way to the centre by car, tap **Navigate there**. If you are on foot, tap **Walk there**.

Your GO starts guiding you to your destination.

Help menu options

Note: In some countries, information may not be available for all services.



Phone for help

Tap this button to find the contact details and location of a service centre.



Drive to help

Tap this button to navigate your way by car to a service centre.



Walk to help

Tap this button to navigate your way on foot to a service centre.



Where am I?

Tap this button to see your current location on the map. You can then tap **Phone for help** and select the type of service you want to contact and tell them your exact location.



Safety and other guides

Tap this button to read a selection of guides including a First Aid guide.



Product Manuals

Tap this button to read a selection of guides relating to your navigation device.

15. Hands-free calling

About hands-free calls

Important: Not all phones are supported or compatible with all features. For more information, go to tomtom.com/phones/compatibility.

If you have a mobile phone with Bluetooth®, you can use your TomTom GO to make phone calls and send and receive messages.

Connecting to your phone

First you must establish a connection between your mobile phone and your TomTom GO.

Tap **Phone settings** in the settings menu, then tap **Manage phones** and select your phone when it is shown in the list.

You only need to do this once and your TomTom GO will remember your phone.

Tip:

- Make sure that you switch on Bluetooth® on your phone.
- Make sure that your phone is set to 'discoverable' or 'visible to all'.
- You may have to enter the password '0000' on your phone in order to connect to your TomTom GO.
- Save your TomTom GO as a trusted device on your phone. Otherwise you need to enter '0000' every time you use the phone.

For additional information about Bluetooth® settings, refer to your mobile phone user guide.

Making a call

When you have established a connection between your TomTom GO and your mobile phone, you can use your GO to make hands-free calls on your mobile phone.

To make a phone call, tap the phone button in the Driving View. Then tap one of the following buttons:

- Tap **Home** to call your Home location.

If you have not entered a number for your Home location this button is unavailable.

- Tap **Number** to enter a phone number to call.
- Tap **Point of Interest** to choose a Point of Interest (POI) to call.

If your GO knows the phone number of a POI, this is shown next to the POI.

- Tap **Phonebook entry** to select a contact from your phonebook.

Note: Your phonebook is automatically copied to your GO when you first establish a connection with your mobile phone.

Not all phones can transfer the phonebook to your GO. For more information, go to www.tomtom.com/phones/compatibility.

- Tap **Recently dialed** to select from a list of people or numbers you have called recently using your GO.
- Tap **Recent caller** to select from a list of people or numbers who called you recently.
Only calls you have received on your GO are saved in this list.

Receiving a call

When someone calls you, the caller's name and phone number are shown. Tap the screen to accept or reject the call.

Auto-answer

You can set your TomTom GO to automatically answer incoming phone calls.

To set automatic answering, tap **Phone settings** in the settings menu, then tap **Auto-answer settings**.

Select how long your GO will wait before automatically answering your calls, then tap **Done**.

Connecting more phones to your TomTom GO

You can establish connections for up to 5 mobile phones.

To add more phones, do the following.

1. Tap **Phone settings** in the Main Menu.
2. Tap **Manage phones**.
3. Tap **Find other phone...** and follow the instructions.

To switch between phones, tap **Manage phones**. Then tap the button for the phone you want to connect to.

Mobile phone menu

When you open the Mobile Phone menu, the following buttons are available:



Manage phones

Tap this button to manage the mobile phones that will be connected to your GO.

You can add a profile for up to five different mobile phones.



Flight mode

Tap this button to put your TomTom GO into flight mode.



**Auto-answer
settings**

Tap this button to change the auto-answer settings.



**Change Home
number**

Tap this button to change your Home phone number.



**Disable
Bluetooth**

Tap this button to disable Bluetooth on your TomTom GO.



Delete

Tap this button to select information you want to delete. You can delete the list of recent callers and the list of recently dialed numbers.

16. Favourites

About Favourites

Favourites provide an easy way to select a location without the need to enter the address. They do not need to be favourite places, they can simply be seen as a collection of useful addresses.

Creating a Favourite

To create a Favourite, do the following:

1. Tap the screen to bring up the Main Menu.
2. Tap **Settings** to open the Settings menu.
3. Tap **Manage Favourites**.
4. Tap **Add**.
5. Select the type of the Favourite by tapping one of the buttons described below:



Home

You can set your Home location as a Favourite.



Favourite

You cannot create a Favourite from another Favourite. This option is always be unavailable in this menu.

To rename a Favourite, tap **Manage Favourites** in the Settings menu.



Address

You can enter an address as a Favourite.



Recent destination

Create a new Favourite by selecting a location from a list of your recent destinations.



Local Search

Tap this button to use TomTom Local Search with Google to find locations such as shops and businesses and save them as Favourites.

For example, if you are looking for a swimming pool near your current location, enter 'swimming pool' and choose the best search result.



Point of Interest

If you visit a POI you particularly like, for example a restaurant, you can add it as a Favourite.



My location

Tap this button to add your current location as a Favourite.

For example, if you stop somewhere interesting, while you are there you can tap this button to create the Favourite.



Point on map

Tap this button to create a Favourite using the Map Browser.

Select the location of the Favourite using the cursor, then tap **Done**.



Latitude Longitude

Tap this button to create a Favourite by entering latitude and longitude values.



Spoken address

Tap this button to create a Favourite by saying the address.



Position of last stop

Tap this button to select your last recorded position as your destination.

-
6. Your GO suggests a name for your new Favourite. To enter a new name, there is no need to delete the suggested name, you just start typing.

Tip: It is a good idea to give your Favourite a name that is easy to remember.

7. Tap **OK**.

Your new favourite appears in the list.

After you have added two or more Favourites, you are asked whether you make regular trips to the same locations. If you tap **YES**, you can enter these destinations as your favourite destinations. Every time you switch on your device, you can immediately select one of these locations as your destination. To change these destinations or select a new destination, tap **Start-up settings** in the Settings menu, then select **Ask for a destination**.

Using a Favourite

You can use a Favourite as a way of navigating to a place without having to enter the address. To navigate to a Favourite, do the following:

1. Tap the screen to bring up the Main Menu.
2. Tap **Navigate to...**
3. Tap **Favourite**.
4. Select a Favourite from the list.

You see your Favourite on the map. You can tap **Park nearby** to see a list of parking POIs near to your Favourite. You can also call the Favourite or see more information about it.

5. Tap **Select** to choose to navigate to this Favourite.

Tip: Use the left and right arrows to choose another Favourite from your list.

Your GO calculates the route for you.

6. When the route is calculated, tap **Done**.

Your GO will immediately start guiding you to your destination with spoken instructions and visual instructions on the screen.

Changing the name of a Favourite

To change the name of a Favourite, do the following:

1. Tap the screen to bring up the Main Menu.
2. Tap **Settings** to open the Settings menu.
3. Tap **Manage Favourites**.
4. Tap the Favourite you want to rename.

Tip: Use the left and right arrows to choose another Favourite from your list.

5. Type in the new name and then tap **OK**.

6. Tap **Done**.

Deleting a Favourite

To delete a Favourite, do the following:

1. Tap the screen to bring up the Main Menu.
2. Tap **Settings** to open the Settings menu.
3. Tap **Manage Favourites**.
4. Tap the Favourite you want to delete.

Tip: Use the left and right arrows to choose another Favourite from your list.

5. Tap **Yes** to confirm the deletion.

6. Tap **Done**.

17. LIVE Services

About LIVE Services

There are a range of LIVE Services available for your TomTom GO. These services are subscription-based and currently include the following:

- HD Traffic
- Speed Cameras
- Weather
- Local Search
- QuickGPSfix™

Regional availability

Note: *Not all LIVE services are available in all countries. You may be able to use LIVE services when travelling abroad. For more information on available services, go to tomtom.com/services.*

Safety Notice

Your TomTom navigation device contains a GSM/GPRS module which can interfere with electrical devices such as cardiac pacemakers, hearing aids and aviation equipment.

Interference with these devices may endanger the health or life of others.

Do not use near unprotected electrical units or in areas where the use of mobile telephones is prohibited, such as hospitals and airplanes.

LIVE Services subscriptions

Checking your LIVE Services subscription

You can check the status of your subscriptions at any time, by doing the following on your GO.

In the Main Menu, tap **Services** and then tap **My Services**.

Your GO also warns you when your LIVE Services subscription is approaching the renewal date.

For more information about LIVE Services subscription and payment terms, go to tomtom.com/services.

Renewing your LIVE Services subscription using your device

1. In the Main Menu, tap **Services** and then tap **My Services**.

The current status of your LIVE Services is shown.

2. Tap on the service you want to renew.

Your GO confirms that you want to renew your subscription.

3. Tap **Yes**.

The renewal request is sent to TomTom. You should complete payment online, on or before the date shown on your GO.

Renewing your LIVE Services subscription using the TomTom website

1. Go to **tomtom.com/getstarted** to install the TomTom driver, if it's not already installed, and start using MyTomTom.
2. When prompted, connect your device to your computer using the USB cable. Then switch your device on.

Important: You should plug the USB connector directly into a USB port on your computer and not into a USB hub or USB port on a keyboard or monitor.

3. Open the LIVE Services section.

4. Check the status of your subscription and click on the service you want to renew.

You are asked to provide your payment details.

5. Enter your payment details and complete the transaction.

Your subscription is renewed.

About TomTom HD Traffic

TomTom HD Traffic is a unique TomTom service providing real-time traffic information. For more information about TomTom services and subscriptions, go to **tomtom.com/services**.



In combination with IQ Routes, HD Traffic helps you plan the optimum route to your destination taking into account the current local traffic conditions.

Your TomTom GO regularly receives information about the changing traffic conditions. If traffic jams or other incidents are found on your current route, your GO will offer to replan your route to try and avoid any delays.

About Local Search with Google

Using local search, you can search the Google listings to find shops and businesses, then plan a route to the destination you choose.



Using local search

To find a location using local search and plan a route there, follow the steps below. In this example, you search for a supermarket near to your current position.

1. Tap the screen to bring up the Main Menu, then tap **Navigate to**.
2. Tap the **Local Search** button.
3. Tap **Search near you**.
4. Type 'supermarket' then tap **OK**.

The locations that match your search are shown in a list with their distance from your current location and Google star rating.

5. Tap one of the locations in the list.

The location is shown on the map.

Tap **Show info** to see more information about this location.

6. Tap **Select**.

Choose whether you want to navigate there, show the location on a map, travel via that location or add it as a favourite.

About Speed Cameras

The Speed Cameras service warns you about the following roadside camera locations:

- Speed camera locations.
- Accident blackspot locations.
- Mobile speed camera locations.
- Average speed camera locations.
- Toll road camera locations.
- Traffic light camera locations.



Other services

The following services are also available on your TomTom GO:

Weather

The Weather service gives you five-day weather reports for any location on your map.



QuickGPSfix™

QuickGPSfix contains information about GPS satellite positions which helps your TomTom GO find your position faster.



My Services

To check your subscription, tap **Services** in the Main Menu and then tap **My Services**.



Your TomTom GO tells you when your LIVE Services subscriptions are due for renewal. You can use your GO to tell TomTom that you wish to renew your current subscription.

For more information about LIVE Services subscription and payment terms, go to tomtom.com/services.

18. Traffic information

Introducing traffic information

You can receive traffic information in two ways:

- TomTom HD Traffic
- Traffic Message Channel (RDS-TMC)

Using traffic information, your TomTom GO can automatically adjust your route to minimise any delays.

About TomTom HD Traffic

TomTom HD Traffic is a unique TomTom service providing real-time traffic information. For more information about TomTom services and subscriptions, go to tomtom.com/services.



In combination with IQ Routes, HD Traffic helps you plan the optimum route to your destination taking into account the current local traffic conditions.

Your TomTom GO regularly receives information about the changing traffic conditions. If traffic jams or other incidents are found on your current route, your GO will offer to replan your route to try and avoid any delays.

Safety Notice

Your TomTom navigation device contains a GSM/GPRS module which can interfere with electrical devices such as cardiac pacemakers, hearing aids and aviation equipment.

Interference with these devices may endanger the health or life of others.

Do not use near unprotected electrical units or in areas where the use of mobile telephones is prohibited, such as hospitals and airplanes.

About RDS-TMC

The Traffic Message Channel (TMC) also known as RDS-TMC, transmits traffic information as a radio signal and is available free of charge in many countries.

TMC is not a TomTom Service, but is available when using the TomTom RDS-TMC Traffic Receiver.

Note: TomTom is not responsible for the availability or quality of traffic information provided by the Traffic Message Channel.

The Traffic Message Channel (TMC) is not available in all countries. To check the availability of TMC services in your country, go to tomtom.com/traffic.

Using Traffic information

The traffic sidebar is shown on the right side of the Driving view. The sidebar informs you about traffic delays while you drive, using glowing dots to show you where each traffic incident is located on your route.



The top of the traffic sidebar represents your destination and shows the total time delay due to traffic jams and other incidents on your route.

The central section of the traffic sidebar shows individual traffic incidents in the order they occur on your route.

The bottom of the traffic sidebar represents your current location and shows the distance to the next incident on your route.

To make the traffic sidebar more readable some incidents may not be shown. These incidents will always be of minor importance and only cause short delays.

The colour of the pointers, as shown below, gives you an instant indication of the type of incident:



Unknown or undetermined situation.



Slow traffic.



Queueing traffic.



Stationary traffic or road closure.

Taking the fastest route

Your GO regularly looks for a faster route to your destination. If the traffic situation changes and a faster route is found, your GO will offer to replan your journey so you can use the faster route.

You can also set your GO to automatically replan your journey whenever a faster route is found. To apply this setting, tap **Traffic settings** in the Traffic menu.

To manually find and replan the fastest route to your destination, do the following:

1. Tap the traffic sidebar.

Tip: If you find that tapping the sidebar opens the Main menu instead of the traffic menu, try tapping the sidebar with your finger resting on the edge of the screen.

2. Tap **Minimise delays**.

Your GO searches for the fastest route to your destination.

The new route may include traffic delays. You can replan the route to avoid all traffic delays, but a route which avoids all delays will usually take longer than the fastest route.

3. Tap **Done**.

Setting the radio frequency for RDS-TMC information

Note: Not all devices support setting the radio frequency.

If you know the frequency of a particular radio station you want to use for RDS-TMC traffic information, you can set the frequency manually. To activate this feature, you must first enable manual tuning.

1. Tap the Traffic bar in the Driving View, then tap **Traffic settings**.
2. Select **Tune manually by entering a frequency** and then tap **Done**.

Now you can enter the frequency of the radio station.

3. Tap the Traffic sidebar in the Driving View.
4. Tap **Tune Manually**.



5. Enter the frequency of the radio station.
6. Tap **Done**.

Your TomTom navigation device looks for your radio station. If it doesn't find a radio station at the frequency you set, it automatically continues to search for the next available station.

Minimising delays

You can use TomTom HD Traffic to minimise the impact of traffic delays on your route. To minimise delays automatically, do the following:

1. Tap **Services** in the Main Menu.
2. Tap **Traffic**.
3. Tap **Traffic settings**.
4. Choose between always taking the faster route automatically, being asked or never changing your route.
5. Tap **Next** and then **Done**.

To manually minimise traffic delays at any time, do the following:

1. Tap the Traffic bar in the Driving View.
2. Tap **Minimise traffic delays**.

Your GO plans the quickest route to your destination. The new route may include traffic delays and may remain the same as the original route.

You can re-plan the route to avoid all delays, but this route is unlikely to be the quickest possible route.

3. Tap **Done**.

Making commuting to work easier

The **Home to work** or **Work to home** buttons in the Traffic menu lets you check your route to and from work with one tap of a button.

When you use either of these buttons, your device plans a route between your home and work locations and checks the route for possible delays.

The first time you use **Home to work**, you must set your traffic home and work locations.



1. Tap the traffic sidebar to open the Traffic menu.
2. Tap **Show home-work traffic**.
3. Set your home location and your work location.

If you have already set the locations and want to change them, tap **Change home-work**.

You can now use the **Home to work** and **Work to home** buttons.

Note: The home location you set here is not the same as the home location you can set in the **Settings Menu**. In addition, the locations you use here do not have to be your actual home and work locations. If there is another route that you often travel, you can set **Work/Home** to use these locations instead.



For example, to check for delays on your route home before you leave the office, do the following:

1. Tap the traffic sidebar to open the Traffic menu.
2. Tap **Show home-work traffic**.
3. Tap **Work to home**.

The Driving View is shown and a message is displayed telling you about traffic incidents on this route. The Traffic sidebar also shows any delays.

Getting more information about an incident

To check for delays on your route, tap **Show traffic on route** in the Traffic menu. Your navigation device shows a summary of the traffic delays on your route.

The total includes any delays due to traffic incidents and those due to busy roads, with information provided by IQ Routes.

Tap **Minimise delays** to check if you can reduce the delay.



2. Tap **Traffic settings**.



Traffic settings

3. To hear a beep sound when a new traffic incident occurs on your route, select **Report if traffic on route changes** and then tap **Done**.
4. If a faster route is found while you are driving, Traffic can replan your journey to use the faster route. Select one of the following options and then tap **Done**.
 - **Always switch to that route**
 - **Ask me if I want to change**
 - **Never change my route**

Traffic incidents

Traffic incidents and warnings are shown on the map, in the Driving View and on the Traffic sidebar.

There are two types of incident and warning signs:

- Symbols shown in a red square are traffic incidents. Your navigation device can replan to avoid them.
- Symbols shown in a red triangle are weather related. Your device does not replan to avoid these warnings.

Traffic incident symbols:



Accident



Road works



One or more lanes closed



Road closed



Traffic incident



Traffic jam





Weather related symbols:



Fog



Rain

	Wind
	Ice
	Snow
	Note: <i>The incident avoided symbol is shown for any traffic incident that you avoid using a traffic service.</i>

Traffic menu

To open the Traffic menu, tap the Traffic sidebar in the Driving View or tap **Traffic** in the Services menu.

The following buttons are available:



Minimise traffic delays

Tap this button to re-plan your route based on the latest traffic information.



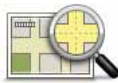
Show home-work traffic

Tap this button to calculate the quickest route from your home location to your place of work and back.



Show traffic on route

Tap this button for an overview of traffic incidents along your route.



View map

Tap this button to browse the map and see the traffic incidents shown on the map.



Change Traffic settings

Tap this button to change your settings for how the Traffic service works on your device.



Read aloud traffic info

Tap this button to hear spoken information about traffic incidents on your route.

Note: *Your TomTom device must have a computer voice installed to read information aloud.*

19. Weather

About Weather

The TomTom Weather service provides detailed weather reports and 5-day weather forecasts for towns and cities. The information is provided by local weather stations and is updated hourly.



Requesting a weather report

To request a weather report for a specific location, such as the town or city for your final destination, do the following:

1. Tap **Services** in the Main Menu.
2. Tap **Weather**.
3. Tap **Weather near you** or **Weather near destination** to go directly to a weather summary.
4. Tap **Weather near other location** to choose your location using, for example, an address, Home, a Favourite or a POI.

A summary weather report for that location is shown. Tap on any day of the week for a detailed weather report.

Types of location

You can request a weather forecast for different types of location. The following types of location are available:



Home

Tap this button to select your Home location.



Favourite

Tap this button to select a Favourite location.



Address

Tap this button to enter an address.



Recent destination

Tap this button to select a location in a list of recently used destinations.



Local search

Tap this button to select a location using a local search.



Point of Interest

Tap this button to select a Point of Interest (POI).



My Location

Tap this button to select your current location.



Point on map

Tap this button to select a point on the map.



Latitude Longitude

Tap this button to enter a latitude and longitude map reference.



Spoken address

Tap this button to enter an address by saying the address.



Position of last stop

Tap this button to select your last recorded position.

20. Speed Cameras

About Speed Cameras



The Speed Cameras service warns you about the following roadside camera locations:

- Speed camera locations.
- Accident blackspot locations.
- Mobile speed camera locations.
- Average speed camera locations.
- Toll road camera locations.
- Traffic light camera locations.

Speed camera warnings

By default, warnings are given 15 seconds before you reach a speed camera location.

You are warned in three ways:

- Your TomTom GO plays a warning sound.
- The type of speed camera and your distance from the camera location is shown in the Driving View. If a speed restriction has been reported for the camera, the speed is also shown in the Driving View.
- The location of the speed camera is shown on the map.

Note: For average speed cameras, you are warned by a combination of icons and sounds at the start, middle and end of the average speed check zone.

Tip: To change the number of seconds or warning sound, tap **Alert settings** in the Speed Cameras menu.

Changing the way you are warned



To change the way your TomTom GO warns you about speed cameras, tap the **Alert settings** button.

You can then set how close you want to be to a speed camera before you are warned and what type of sound will be played.

For example, to change the sound that is played when you approach a fixed speed camera, do the following:

1. Tap **Services** in the Main Menu.
2. Tap **Speed Cameras**.
3. Tap **Alert settings**.

A list of speed camera types is displayed. A speaker is shown next to the speed camera types that have been set for an alert.

4. Tap **Fixed cameras**.
5. Tap **NO** to avoid removing the fixed speed camera alerts.
6. Enter the time in seconds for when a warning is given before you reach a camera. Then tap **OK**.
7. Tap the sound you want to be used for the warning.

Tips: To switch off warning sounds for a camera type, tap **Silence** in step 7 above. You still see a warning in the Driving View if you switch off the warning sound.

8. Tap **YES** to save your changes.

Speed Camera Symbols

Speed cameras are shown as symbols on the Driving View.

When you approach an area where an alert is located, you see a symbol and a warning sound is played.

You can change both the warning sound and the number of seconds that the warning is issued before reaching the alert.



Fixed speed camera



Mobile speed camera



Traffic light camera



Toll road camera



Restricted road camera - located on a minor road that reduces traffic on a larger road



Other camera



Mobile camera hotspot



Average speed check



Accident black spot



Bi-directional speed camera



Ungated railway crossing

Report button

To show the report button in the Driving View, do the following:

1. Tap **Services** in the Main Menu.
2. Tap **Speed Cameras**.
3. Tap **Enable report button**.
4. Tap **Done**.

The report button is shown on left-hand side of the Driving View or if you are already using the quick menu, it's added to the buttons available in the quick menu.

Tip: To hide the report button, tap **Disable report button** in the Speed Cameras menu.

Reporting a new speed camera while on the move

1. Tap the report button shown in the Driving View or in the quick menu to record the location of the camera.

If you tap the report button within 20 seconds of receiving a speed camera warning, you get the option to add a camera or remove a camera. Tap **Add camera**.

2. Tap **Fixed camera** or **Mobile camera**, depending on the type of camera you are reporting.
3. Select the camera location on the map and confirm that it is correct.
4. Tap the type of fixed camera you want to report, for example, a traffic light camera.

Note: If the type of camera you choose has a speed restriction, you can also enter the speed.

A message confirms that your camera has been reported to the Speed Camera team at TomTom.

Reporting a new speed camera while at home

You do not need to be at the location of a speed camera to report the new location. To report a new speed camera location while you are at home, do the following:

1. Tap **Services** in the Main Menu on your navigation device.
2. Tap **Speed Cameras**.
3. Tap **Report safety camera**.
4. Tap **Fixed camera** or **Mobile camera** depending upon the type of speed camera.
5. Use the cursor to mark the exact location of the camera on the map, then tap **Done**.
6. Tap **Yes** to confirm the location of the camera.
7. Tap on the type of camera you want to report and if necessary, choose the speed restriction for the camera.

You see a message confirming that your camera has been reported to the Speed Cameras team.

Reporting incorrect camera alerts

You may receive an alert for a camera that is no longer there. To report an incorrect camera alert, do the following:

1. While you are at the location of the missing camera, tap **Report** in the Driving View.

Note: This must be done within 20 seconds of receiving the camera alert.

2. Tap **Remove**.

The next time you connect your navigation device to the TomTom website, the camera alert is reported as incorrect.

Types of fixed speed camera you can report

When you report a fixed speed camera, you can select the type of fixed camera you are reporting.

These are the different types of fixed speed camera:



Speed camera

This type of speed camera checks the speed of passing vehicles.



Traffic light camera

This type of camera checks for vehicles breaking traffic rules at traffic lights.



Toll road camera

This type of camera monitors traffic at toll road barriers.



Average speed check

This type of speed camera checks the average speed of vehicles between two fixed points.



Vehicle restriction

This type of camera checks traffic on roads where access is restricted.



Other camera

All other types of camera that do not fall into any of the above categories.

Average speed check camera warnings

There are several types of visual and audible warnings that you may see and hear when you meet an average speed check camera.

You always receive a start and end zone warning regardless of the speed you are travelling at. Intermediate warnings, if given, occur every 200 meters.

All the warnings are described below:



Start of zone warning

As you approach the start of an average speed check zone, you see a visual warning in the top left hand corner of the Driving View with a distance to the camera underneath it. You hear an audible warning.

You also see a small icon on the road showing the position of the average speed check camera at the start of the zone.



Intermediate warning - type 1

Once in the speed check zone, if you are not speeding and have already received a start of zone warning, you see a visual warning in the Driving View. This reminds you that you are still in the speed check zone.



Intermediate warning - type 2

Once in the speed check zone, if you are driving at over 100% of the permitted speed and have already received a start of zone warning, you see a visual warning in the Driving View indicating the maximum permitted speed. You also hear a small audible warning. These warnings are there to remind you to slow down...



Intermediate warning - type 3

Once in the speed check zone, if you are driving at over 100% of the permitted speed and have not received a start of zone warning, you see a visual warning in the Driving View indicating the maximum permitted speed. You also hear a loud audible warning.

These warnings occur at the FIRST intermediate point only and are there to remind you to slow down...



End of zone warning

As you approach the end of an average speed check zone, you see a visual warning in the Driving View with a distance to the camera shown underneath it. You hear an audible warning.

You also see a small icon on the road showing the position of the average speed check camera at the end of the zone.

Speed Cameras menu

To open the Speed Cameras menu, tap **Services** in the Main Menu and then tap **Speed Cameras**.



Report speed camera

Tap this button to report a new speed camera location.



Alert settings

Tap this button to set the alerts you will receive and the sounds used for each alert.



Disable alerts

Tap this button to disable alerts.



Enable report button

Tap this button to enable the report button. The report button is shown in the Driving View or in the quick menu.

When the report button is shown in the Driving View, this button changes to Disable report button.

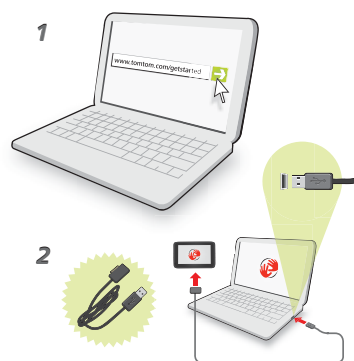
21. MyTomTom

About MyTomTom

MyTomTom helps you manage the contents and services of your TomTom GO navigation device, as well as giving you access to the TomTom community. You log in to MyTomTom on the TomTom website. It is a good idea to frequently connect your navigation device to MyTomTom, to ensure you always have the latest updates.

Tip: We recommend using a broadband internet connection whenever you connect your navigation device to MyTomTom.

Setting up MyTomTom



To set up MyTomTom, do the following:

1. Connect your computer to the internet.
2. Start a browser and go to **tomtom.com/getstarted**.
3. Click **Download now**.

Your browser downloads the TomTom driver, which you need to install on your computer in order to connect your device to MyTomTom. Follow the instructions on the screen if you are asked questions while downloading.

4. When prompted, connect your device to your computer using the USB cable. Then switch your device on.

Your device is then recognised, backed up and the latest updates are installed.

Important: You should plug the USB connector directly into a USB port on your computer and not into a USB hub or USB port on a keyboard or monitor.

Once the TomTom driver is installed, you can access MyTomTom from the notification area on your desktop.

Tip: When you connect your navigation device to your computer, MyTomTom tells you if there are any updates for your device.

MyTomTom account

To download content and services from TomTom, you need a MyTomTom account. You can create an account when you start using MyTomTom.

Note: *If you have more than one TomTom device, you need a separate account for each device.*

22. Customer support

Getting help to use your navigation device

To find out even more about your navigation device, use MyTomTom to read the Reference Guide or download it from tomtom.com/downloads.

Status & information



Status & information

Tap this button to open the Status & information menu.



Version information

Tap this button to view technical information about your device, such as your serial number for your device and the TomTom App version.



My Services

Tap this button to check the status of your subscriptions to TomTom Services.



GPS Status

Tap this button to see the current status for GPS reception.

23. Addendum

Important Safety Notices and Warnings

Global Positioning System

The Global Positioning System (GPS) is a satellite-based system that provides location and timing information around the globe. GPS is operated and controlled under the sole responsibility of the Government of the United States of America which is responsible for its availability and accuracy. Any changes in GPS availability and accuracy, or in environmental conditions, may impact the operation of your TomTom device. TomTom does not accept any liability for the availability and accuracy of GPS.

Use with Care

Use of a TomTom device for navigation still means that you need to drive with due care and attention.

Aircraft and Hospitals

Use of devices with an antenna is prohibited on most aircraft, in many hospitals and in many other locations. A TomTom device must not be used in these environments.

Taking care of your TomTom device

Do not leave your TomTom device or TomTom accessories on view when you leave your car. They may become an easy target for thieves.

We recommend that you use the safety preferences on your TomTom device, where available. The safety preferences are available in the Preferences menu.

Take care of your TomTom device and clean it correctly.

- Use a soft cloth to wipe the screen of your device; do not use any liquid cleaners.
- If your device gets wet, dry it with a soft cloth.
- Do not open the casing of your device under any circumstances. Doing so may be dangerous and will invalidate your warranty.
- If your device includes a memory card, do not use the memory card with any device other than a TomTom device. Other devices may damage the memory card.
- Do not expose your device to high or low temperatures, which can cause permanent damage. For example, don't leave it in the car on hot summer days or during cold winter nights.

Battery

This product uses a Lithium-Polymer battery. Do not use it in a humid, wet and/or corrosive environment. Do not put, store or leave your product in or near a heat source, in a high temperature location, in strong direct sunlight, in a microwave oven or in a pressurized container, and do not expose it to temperatures over 60 C (140 F). Failure to follow these guidelines may cause the Lithium-Polymer battery to leak acid, become hot, explode

or ignite and cause injury and/or damage. Do not pierce, open or disassemble the battery. If the battery leaks and you come into contact with the leaked fluids, rinse thoroughly with water and seek medical attention immediately. For safety reasons, and to prolong the life-time of the battery, charging will not occur at low (below 0 C/32 F) or high (over 45 C/ 113 F) temperatures.

Temperatures: Standard operation: -0 C (32 F) to +45 C (113 F); short period storage: -20 C (-4 F) to + 60 C (140 F); long period storage: -20 C (-4 F) to +25 C (77 F).

Caution: risk of explosion if battery is replaced by an incorrect type.

Do not remove or attempt to remove the non-user-replaceable battery. If you have a problem with the battery, please contact TomTom customer support.



THE LITHIUM-POLYMER BATTERY CONTAINED IN THE PRODUCT MUST BE RECYCLED OR DISPOSED OF PROPERLY ACCORDING TO THE LOCAL LAWS AND REGULATIONS AND ALWAYS SEPARATE FROM HOUSEHOLD WASTE. BY DOING THIS YOU WILL HELP CONSERVE THE ENVIRONMENT. USE YOUR TOMTOM ONLY WITH THE SUPPLIED DC POWER LEAD (CAR CHARGER/BATTERY CABLE) AND AC ADAPTER (HOME CHARGER) FOR BATTERY CHARGING.

Please use this device with the charger provided.

For replacement chargers, go to **tomtom.com** for information about approved chargers for your device.

The stated battery life is a maximum possible battery life. The maximum battery life will only be achieved under specific atmospheric conditions. The estimated maximum battery life is based on an average usage profile.

For tips on extending the battery life, go to the FAQ listed below for your country:

AU:www.tomtom.com/8703, CZ:www.tomtom.com/7509, DE:www.tomtom.com/7508, DK:www.tomtom.com/9298, ES:www.tomtom.com/7507, FI:www.tomtom.com/9299, FR:www.tomtom.com/7506, HU:www.tomtom.com/10251, IT:www.tomtom.com/7505, NL:www.tomtom.com/7504, PL:www.tomtom.com/7503, PT:www.tomtom.com/8029, RU:www.tomtom.com/10250, SE:www.tomtom.com/8704, UK:www.tomtom.com/7502, US:www.tomtom.com/7510

CE Marking

This equipment complies with the requirements for CE marking when used in a residential, commercial, vehicular or light industrial environment, achieving all the appropriate provisions of the relevant legislation in the EU.

CE0168

R&TTE directive

Hereby, TomTom declares that TomTom personal navigation devices and accessories are in compliance with the essential requirements and other relevant provisions of the EU Directive 1999/5/EC. The declaration of conformity can be found here: www.tomtom.com/legal.

WEEE directive



This symbol on the product or its packaging indicates that this product shall not be treated as household waste. In line with EU Directive 2002/96/EC for waste electrical and electronic equipment (WEEE), this electrical product must not be disposed of as unsorted municipal waste. Please dispose of this product by returning it to the point of sale or to your local municipal collection point for recycling.

Connected networks

Devices that contain a GSM module are intended for connection to the following networks:

Exposure limits

This device complies with radiation exposure limits set forth for an uncontrolled environment. In order to avoid the possibility of exceeding the radio frequency exposure limits, human proximity to the antenna shall not be less than 20cm (8 inches) during normal operation.

This Document

Great care was taken in preparing this manual. Constant product development may mean that some information is not entirely up to date. The information in this document is subject to change without notice.

TomTom shall not be liable for technical or editorial errors or omissions contained herein; nor for incidental or consequential damages resulting from the performance or use of this material. This document contains information protected by copyright. No part of this document may be photocopied or reproduced in any form without prior written consent from TomTom N.V.

Model names

4CS01, 4CS03, 4CQ02, 4CQ07, 4CQ01, 4KH00, 4KI00

24. Copyright notices

© 2010 TomTom N.V., The Netherlands. TomTom®, and the "two hands" logo, among others, are Trademarks owned by TomTom N.V. or one of its subsidiaries. Please see **www.tomtom.com/legal** for warranties and end user licence agreements applying to this product.

© 2010 TomTom N.V., Niederlande. TomTom®, das 'Zwei Hände'-Logo usw. sind registrierte Marken von TomTom N.V. oder eines zugehörigen Tochterunternehmens. Die für dieses Produkt geltenden Garantien und Endnutzerlizenzvereinbarungen finden Sie unter **www.tomtom.com/legal**.

© 2010 TomTom N.V., Pays-Bas. TomTom® et le logo composé de « deux mains », entre autres, font partie des marques commerciales appartenant à TomTom N.V. ou l'une de ses filiales. L'utilisation de ce produit est régie par notre garantie limitée et le contrat de licence utilisateur final, que vous pouvez consulter à l'adresse suivante : **www.tomtom.com/legal**

© 2010 TomTom N.V., Nederland. TomTom® en het logo met twee handen zijn onder andere handelsmerken die eigendom zijn van TomTom N.V. of een van haar dochterondernemingen. Ga naar **www.tomtom.com/legal** voor garanties en licentieovereenkomsten voor eindgebruikers die van toepassing zijn op dit product.

© 2010 TomTom N.V., The Netherlands TomTom® e il logo delle "due mani", fra gli altri, sono marchi registrati di proprietà di TomTom N.V. o di una delle sue filiali. Consultare **www.tomtom.com/legal** per le garanzie e i contratti di licenza per l'utente finale applicabili a questo prodotto.

© 2010 TomTom NV, Países Bajos. TomTom™ y el logotipo "dos manos" son marcas comerciales, aplicaciones o marcas registradas de TomTom NV. Nuestra garantía limitada y nuestro acuerdo de licencia de usuario final para el software integrado son de aplicación para este producto; puede consultar ambos en **www.tomtom.com/legal**.

© 2010 TomTom N.V., Països Baixos. TomTom®, i el logotip amb les "dues mans", entre altres, formen part de les marques comercials de TomTom N.V. o d'una de les seves filials. Visiteu **www.tomtom.com/legal** per a obtenir informació sobre les garanties i els acords de llicència d'usuari final d'aquest producte.

© 2010 TomTom N.V., Holanda. TomTom® e o logótipo das "duas mãos", entre outras, são marcas comerciais detidas pela TomTom N.V. ou por uma das suas subsidiárias. Vá

a www.tomtom.com/legal para consultar as garantias e o contratos de licença do utilizador final aplicáveis a este produto.

© 2010 TomTom NV, Holland. TomTom™ og logoet med "de to hænder" er blandt de varemærker, produkter og registrerede varemærker, der tilhører TomTom International B.V. Vores begrænsede garanti og slutbrugerlicensaftale for indlejret software gælder for dette produkt; begge dokumenter findes på www.tomtom.com/legal.

© 2010 TomTom N.V., Alankomaat. Muun muassa TomTom® ja kaksi kättä -logo ovat TomTom N.V.:n tai sen tytäryhtiöiden omistamia tavaramerkkejä. Katso osoitteesta www.tomtom.com/legal tätä tuotetta koskevat takuut ja käyttöehtosopimukset.

© 2010 TomTom N.V., Nederland. TomTom®, og de "to hender"-logoen, blant andre, er varemerker eid av TomTom N.V. eller en av deres underleverandører. Vennligst se www.tomtom.com/legal for gjeldende garantier og lisensavtaler for sluttbrukere for dette produktet.

© 2010 TomTom NV, Nederländerna. TomTom™ och logotypen "två händer" tillhör de varumärken, programvaror eller registrerade varumärken som ägs av TomTom International B.V. Vår begränsade garanti och vårt slutanvändarlicensavtal för inbyggd programvara kan gälla för denna produkt. Du kan läsa dem båda på www.tomtom.com/legal.

© 2010 TomTom N.V., Nizozemsko. TomTom® a logo „dvou rukou“ jsou, mimo jiné, ochranné známky společnosti TomTom N.V. nebo jejích poboček. Navštivte prosím adresu www.tomtom.com/legal, kde naleznete informace o zárukách a licenčních smlouvách s koncovým uživatelem vztahujících se k tomuto výrobku.

© 2010 TomTom N.V., Hollandia. A TomTom®, és a „két kéz“ embléma, többek között, a TomTom N.V. vagy leányvállalatai védjegye. A termékre vonatkozó garanciáról és a végfelhasználói licencszerződésekről részleteket a www.tomtom.com/legal oldalon olvashat.

© 2010 TomTom N.V., Holandia. TomTom™ i logo z dwiema dłońmi, oraz inne, są zarejestrowanymi znakami towarowymi firmy TomTom N.V. lub jednej z jej spółek zależnych. Informacje o gwarancjach i umowach licencyjnych dla końcowego użytkownika tego produktu znajdują się na stronie www.tomtom.com/legal.

© 2010 TomTom N.V., Holandsko. TomTom® a logo „dve ruky“ sú okrem ďalších ochranné známky, ktoré vlastní spoločnosť TomTom N.V. alebo jedna z jej dcérskych spoločností. Pozrite si stránku www.tomtom.com/legal, ak chcete informácie o zárukách a dohody o licencií pre koncového používateľa týkajúce sa tohto produktu.

© 2010 TomTom N.V., Madalmaad. TomTom® ja "kahe käe" logo kuuluvad nende kaubamärkide hulka, mille omanikuks on TomTom N.V. või mõni selle filiaal. Tootele kehtivad garantiid ja lõppkasutaja litsentsilepingud leiad aadressilt www.tomtom.com/legal.

© 2010 TomTom N.V., Nyderlandai. TomTom® ir "dviejų plaštakų" formos logotipas, kaip ir daugelis kitų, priklauso TomTom N.V. arba kuriai nors dukterinei įmonei. Apie šiam

produktui taikomas garantijas ir licencijavimo galutiniam vartotojui sutartis skaitykite internete adresu www.tomtom.com/legal.

© 2010 TomTom N.V., Niderlande. TomTom® un "divu rociņu" logotips ir prečzīmes, kas pieder TomTom N.V. vai kādam tā meitas uzņēmumam. Garantijas un gala lietotāja līgumus, kas piemērojami šim izstrādājumam, skatiet vietnē www.tomtom.com/legal.

© 2010 TomTom N.V., Hollanda. TomTom® ve diģer logolar ile birlikte "iki e!" logosunun mülkiyeti, TomTom N.V. veya bađlı řirketlerine aittir. Bu ürün için geđerli garanti ve son kullanıcı lisans sözleşmeleri için www.tomtom.com/legal sayfasına bakın.

© 2010 TomTom N.V., Holanda. TomTom® e o logotipo "duas mãos" entre outros, são marcas comerciais de propriedade da TomTom N.V. ou de uma de suas subsidiárias. Consulte www.tomtom.com/legal para obter garantias e contratos de licença de usuário final que se aplicam a este produto.

Data Source

© 2010 Tele Atlas N.V. Based upon:

Topografische ondergrond Copyright © dienst voor het kadaster en de openbare registers, Apeldoorn 2006.

© Ordnance Survey of Northern Ireland.

© IGN France.

© Swisstopo.

© BEV, GZ 1368/2003.

© Geonext/DeAgostini.

© Norwegian Mapping Authority, Public Roads Administration / © Mapsolutions.

© DAV, violation of these copyrights shall cause legal proceedings.

This product includes mapping data licensed from Ordnance Survey with the permission of the Controller of Her Majesty's Stationery Office. © Crown copyright and/or database right 2010. All rights reserved. Licence number 100026920.

© Roskartographia

Data Source

© 2010 Tele Atlas North America. Inc. All rights reserved.

SoundClear™ acoustic echo cancellation software © Acoustic Technologies Inc.

Apple® and iPod® are trademarks of Apple Computer, Inc., registered in the U.S. and other countries.

Audible®, AudibleListener® and Audiblemanager® are registered trademarks of Audible, Inc. When purchasing and using Audible content you need to agree to the terms and conditions as posted in the Legal Notices www.audible.com.

Text to Speech technology, © 2010 Loquendo TTS. All rights reserved. Loquendo is a registered trademark. www.loquendo.com

MPEG Layer-3 audio coding technology licensed from Fraunhofer IIS and Thomson.

Supply of this product does not convey a license nor imply any right to distribute content created with this product in revenue-generating broadcast systems (terrestrial, satellite, cable and/or other distribution channels), streaming applications (via Internet, intranets and/or other networks), other content distribution systems (pay-audio or audio-on-demand applications and the like) or on physical media (compact discs, digital versatile discs, semiconductor chips, hard drives, memory cards and the like). An independent license for such use is required. For details, please visit mp3licensing.com

Some images are taken from NASA's Earth Observatory.

The purpose of NASA's Earth Observatory is to provide a freely-accessible publication on the Internet where the public can obtain new satellite imagery and scientific information about our home planet.

The focus is on Earth's climate and environmental change: earthobservatory.nasa.gov/

The software included in this product contains copyrighted software that is licensed under the GPL. A copy of that license can be viewed in the License section. You can obtain the complete corresponding source code from us for a period of three years after our last shipment of this product. For more information, visit tomtom.com/gpl or to call your local TomTom customer support team, visit tomtom.com/support and upon your request we will send you a CD with the corresponding source code.

Linotype, Frutiger and Univers are trademarks of Linotype GmbH registered in the U.S. Patent and Trademark Office and may be registered in certain other jurisdictions.

MHei is a trademark of The Monotype Corporation and may be registered in certain jurisdictions.

Free Manuals Download Website

<http://myh66.com>

<http://usermanuals.us>

<http://www.somanuals.com>

<http://www.4manuals.cc>

<http://www.manual-lib.com>

<http://www.404manual.com>

<http://www.luxmanual.com>

<http://aubethermostatmanual.com>

Golf course search by state

<http://golfingnear.com>

Email search by domain

<http://emailbydomain.com>

Auto manuals search

<http://auto.somanuals.com>

TV manuals search

<http://tv.somanuals.com>