
TomTom

1. Before you start

Switching on

Follow the instructions at the start of this manual to dock your TomTom in your car stereo. Your TomTom can also be used without docking it in your car stereo. A mount is available as an accessory so that you can use your TomTom in other cars.

The first time you switch on your TomTom, it may take up to 20 seconds to start. To switch off your TomTom, press and hold the On/Off button for 2 seconds.

Setting up

To set up your navigation device, you need to answer a few questions by tapping the screen.

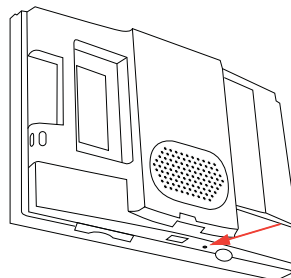
Important: Take care to select the correct language, since the language you choose will be used for all menus and written instructions.

Troubleshooting

Always make sure that you are using the latest version of the TomTom application on your TomTom. You can update the application using TomTom HOME.

If you have problems turning on your TomTom, try resetting your TomTom.

To reset your TomTom, use a straightened paper clip, or something similar, to push the reset button. The reset button is on the bottom of your TomTom. Then turn your TomTom on.



Take care of your TomTom

Never leave your TomTom or accessories on view when you leave the car or they may become an easy target for thieves.

You can set a password for your TomTom which must be entered every time you start your TomTom.

It is important to take care of your TomTom.

- Your TomTom is not designed for use in extreme temperatures and any such exposure may cause permanent damage.
- Do not open the casing of your TomTom under any circumstances. Doing so may be dangerous and will invalidate the warranty.
- Wipe or dry the screen of your TomTom using a soft cloth. Do not use any liquid cleaners.

Light sensor

Your TomTom uses a light sensor to detect the background light level and can automatically adjust the brightness of the screen and switch to night view.

To use the light sensor to make these changes, tap **Brightness preferences** in the Preferences menu. You can then select these options:

- **Turn brightness down when dark**
- **Switch to night view when dark**

Link night view to headlights

If you select **Link night view to headlights** in the settings on your car stereo, your TomTom will switch to night view when you switch on the headlights in your car. See the manual for your car stereo for information about the settings.

2. Driving View

When your TomTom starts, you are shown the Driving View along with detailed information about your current location.

Tap the centre of the screen at any time to open the Main Menu.

Note: The Driving View is shown in black and white until your TomTom locates your current position.



A Tap + and - to zoom in and out.

B Quick menu - switch this on in the Preferences menu.

C Your current position.

D The name of the next major road or road sign information, if applicable.

E Traffic bar - traffic information is available either through the stereo using RDS-TMC or from TomTom Traffic. TomTom Traffic requires a Bluetooth®-enabled mobile phone. For more information about how to subscribe to and receive TomTom Traffic, go to tomtom.com/services.

To set up traffic information, tap **TomTom Traffic** in the Main Menu.

F Navigation instruction for the road ahead.

Tap this area to repeat the last spoken instruction and to change the volume.

G The name of the street you are on.

H Information about your journey such as journey time, remaining distance and arrival time.

To change the information shown, tap **Status bar preferences** in the **Preferences** menu.

I GPS signal strength.

3. Making your first journey

Planning a route with your TomTom is easy. To plan your first route, follow the steps below.

Important: You should always plan your journey before you start driving. It is dangerous to plan a route while driving.

1. Tap the screen to bring up the Main Menu.

*Note: The buttons on your TomTom are shown in full colour unless a button is currently unavailable. For example, the button named **Find alternative...** in the Main Menu is not available until you have planned a route.*

2. Tap **Navigate to...**



3. Tap **Address**.



When you enter an address, you can choose from the following options:

- **City centre** - tap this button to set your destination as the centre of a city or town.
- **Street and house number** - tap this button to set an exact address as your destination.
- **Postcode** - tap this button to enter a postcode as your destination.

Note: You can enter a postcode for any country. In the UK and the Netherlands, postcodes are detailed enough to identify a house on their own. In other countries you can enter a postcode to identify a town or area. You will then have to enter a street and house number.

- **Crossing or intersection** - tap this button to set your destination as the point where two streets meet.
- **Spoken address** - tap this button to set your destination by announcing the address to your TomTom.

In this example, we will enter an exact address.

4. Tap **Street and house number**.



Note: When planning a trip for the first time your TomTom asks you to choose a country. Your choice is saved and used for all routes you plan.

You can change this setting at any time by tapping the country flag.

Note: Spoken address input is not supported for all maps or for all languages.

5. Start to type the name of the town where you want to go.



As you type, the names of the towns that match what you have typed are shown. When your destination appears in the list, tap the name of the town to set the destination.



Tip: Instead of typing the name, tap this button to say the address by speaking to your TomTom.

6. Start to type the name of the street and select it when it is shown.

As with the name of the town, the names of the streets that match what you have typed are shown. When your destination appears in the list, tap the name of the street to set the destination.

7. Now enter the house number of your destination and then tap **Done**.



8. Your TomTom asks if you need to arrive at a particular time. For this exercise, tap **NO**.

The route is calculated by your TomTom.

9. When the route has been calculated, tap **Done**.

Your TomTom will immediately begin to guide you to your destination, using both spoken instructions and on-screen directions.



Arrival times

When you plan a route, your TomTom asks you if you need to arrive at a particular time.

Tap **YES** to enter a preferred arrival time.

Your TomTom calculates your arrival time and shows you whether you will arrive on time.

You can also use this information to work out when you need to leave. If your TomTom shows that you will arrive 30 minutes early, you can wait and leave in 30 minutes time, rather than arrive early.

Your arrival time is constantly recalculated during your journey. The status bar shows whether you will arrive on time or if you are going to be late, as shown below:

+55 min

You will arrive 55 minutes before the arrival time you entered.

If the estimated arrival time is more than five minutes before the time you entered, it is shown in green.

+3 min

You will arrive 3 minutes before the arrival time you entered.

If the estimated arrival time is less than 5 minutes before the time you entered, it is shown in yellow.

-19 min

You will arrive 19 minutes late.

If the estimated arrival time is later than the time you entered, it is shown in red.



Status bar preferences

Tap **Status bar preferences** in the Preferences menu, to enable or disable arrival time notifications.

Select the required options on the first menu screen and then tap **Done**.

To enable arrival time notifications, select **Show leeway to arrival time**.

What are the other navigation options?

When you tap **Navigate to...**, you can set your destination in many ways, not just by entering the address. The other options are listed below:



Home

Tap this button to navigate to your Home location.

You will probably use this button more than any other.



Favourite

Tap this button to select a Favourite as your destination.



Address

Tap this button to enter an address as your destination.



Recent destination

Tap this button to select your destination from a list of places you have recently used as destinations.



Point of Interest

Tap this button to navigate to a Point of Interest (POI).



Point on map

Tap this button to select a point on the map as your destination using the map browser.



Latitude Longitude

Tap this button to enter a destination using latitude and longitude values.



TomTom Buddy

Tap this button to navigate to the last known position of a TomTom Buddy. Don't forget that the Buddy may move before you reach him.



Tap this button to select the last recorded position where your TomTom navigation device was docked, as your destination.

Last docked

Planning a route in advance

You can also use your TomTom to plan journeys in advance by selecting both your starting point and your destination. You could, for example, do the following:

- Find out how long a journey is going to take before you start.
- Check the route of a journey you are planning.
- Check a route for someone who is coming to visit you, so that you can explain the route to them.

To plan a route in advance, follow these steps:

1. Tap the screen to bring up the main menu.
2. Tap the arrow button to move to the next menu screen and tap **Prepare route**.



Prepare route

3. Select the starting point for your journey in the same way that you would select your destination.
4. Set the destination for your journey.
5. Choose the type of route that should be planned.
 - **Fastest route** - the route which takes the least time.
 - **Shortest route** - the shortest distance between the locations you set. This may not be the quickest route, especially if the shortest route is through a town or city.
 - **Avoid motorways** - a route which avoids motorways.
 - **Walking route** - a route designed for making the journey on foot.
 - **Bicycle route** - a route designed for making the journey on a bicycle.
 - **Limited speed** - a route for a vehicle which can only be driven at a limited speed. You have to specify the maximum speed.
6. Your TomTom plans the route between the two locations you selected.

More information about a route

You can access these options for the route you last planned by tapping **View route** in the Main Menu or the **Details** button on the route summary screen.

You can then select from the following options:



Browse as text

Tap this button for a list of all the turn instructions on the route.

This is very useful if you need to explain a route to someone else.



Browse as images

Tap this button to see each turn in the journey. Tap the right and left arrows to move forwards and backwards through the journey.

Tap the screen to turn off the 3D display and view the map from above.



Browse map of route

Tap this button to see an overview of the route using the map browser.



Show route demo

Tap this button to watch a demo of the journey. You can interrupt the demo at any time by tapping the screen.



Show route summary

Tap this button to open the route summary screen.

4. Finding alternative routes

Once you have planned a route, you may want to change something about the route, without changing your destination.

Why change the route?

Maybe for one of these reasons:

- You can see a roadblock or a line of traffic ahead.
- You want to travel via a particular location, to pick someone up, stop for lunch or fill up with petrol.
- You want to avoid a difficult junction or a road you don't like.



Tap **Find alternative...** in the Main Menu to change the route that is currently planned.

Then tap one of the options below.



Tap this button to calculate an alternative to the route already planned.

Your TomTom will look for another route from your current location to your destination.

If you decide you would prefer to use the original route after all, tap **Recalculate original**.

Why would I need to do this?

Apart from the roads near your position and near your destination, the new route will use totally different roads to reach your destination. This is an easy way of calculating a totally different route.



Tap this button if you can see a roadblock or a line of traffic ahead. You then have to choose how much of the route ahead you want to avoid.

Choose from the different options: 100m, 500m, 2000m, 5000m. Your TomTom will recalculate your route avoiding the section of the route for the distance you selected.

Don't forget that once a new route is calculated, you may have to turn off the road you are on very soon.

If the roadblock suddenly clears, tap **Recalculate original** to return to your original route.



Travel via...

Tap this button to change your route so that it passes a particular location, perhaps to pick someone up on the way.

You choose the location you want to pass in the same way as you choose a destination. So you can select from all the same options: for example, **Address, Favourite, Point of Interest** and **Point on map**.

Your TomTom will calculate a new route to your destination that passes the location you chose. Unlike your final destination, your TomTom does not inform you when you pass by this location.

Using this button, you can only travel via one location. If you want to pass more than one, use an Itinerary.



Recalculate original

Tap this button to return to the original route without deviations to avoid roadblocks or travelling via particular locations.



Avoid part of route

Tap this button to avoid a part of the route. Use this button if you see that your route includes a road or junction you don't like, or which is well-known for traffic problems.

You then choose the road you want to avoid from a list of the roads on your route.



Minimise delays

Tap this button to recalculate your route so that it avoids traffic problems as much as possible. Your TomTom will check if there are any traffic problems on your route and work out the best route to avoid the problems.

Note: *This button is only available if your device is receiving traffic information from TomTom Traffic or RDS-TMC (the Traffic Message Channel).*

5. Menus

Main menu

Tap the screen at any time when TomTom displays the Driving View to open the Main Menu.



- **Navigate to...**

Tap this button to start planning a route.
- **Find alternative...**

Tap this button if you want to avoid part of your route, travel via a specific location or calculate an alternative route.
- **Help me!**

Help me! provides an easy way for you to find and contact emergency service centres and other specialist services.
- **Mobile phone**

This button opens the mobile phone menu. You can, for example, make calls, and write or read messages.
- **Change preferences**

This button opens the Preferences menu. You can change many things about the way TomTom looks and behaves.

Hidden buttons and features

When you first start using your TomTom, not all the buttons will be shown in the menu.

Many buttons and some more advanced features are hidden because you will not need these features very often.

To show all buttons and features, tap **Show ALL menu options** in the Preferences menu.

To hide these buttons again, tap **Show fewer menu options** in the Preferences menu.

6. Sounds and voices

The sound on your TomTom is used for features such as:

- Spoken instructions
- Hands-free calls
- Warnings

How do I change the volume level?

You can change the volume in three ways:

- Tap the bottom left hand area of the Driving View. The last spoken instruction is repeated and the volume level is shown.

Move the volume slider to adjust the volume.

- In the Main Menu, tap **Change preferences**, then tap **Volume preferences**.

Tap **Test** to check your changes.

- You can set your TomTom to change the volume automatically depending on how noisy it is in the car.

Changing the volume automatically



Your TomTom can change the volume automatically.

1. In the Main Menu, tap **Change preferences**.
2. Tap **Volume preferences**.
3. Select **Link volume to car speed**.
4. Tap **Done**.

Selecting a voice



Voice preferences

To change the voice being used by your TomTom, tap **Voice preferences** in the Preferences menu, then tap **Change voice**. Select a voice from the list.

Your TomTom has two different kinds of voices:

- Computer voices

These are generated by your TomTom. They provide spoken instructions while you are driving and can pronounce street names and announce messages, traffic reports, weather reports, tips and tutorials.

- Human voices

These are recorded by an actor.

Note: *Human voices only provide spoken instructions.*

7. Using the car stereo

The car stereo uses the TomTom navigation device to display information, play videos, and show controls.

Through your TomTom navigation device, you can control the following:

- The radio
- The Audio CD/CD-ROM/DVD player
- An iPod
- Music stored on a USB stick

For full details, see the owner's manual included with the car stereo.

Switching to audio

To use your TomTom navigation device to control your car stereo, press and immediately release the **Screen** button on the car stereo. You can switch back to the navigation functions at any time by pressing the **Screen** button again. To switch to other audio input sources, press the **Source** button on the car stereo.

The volume of music and the radio is set by the volume control on the car stereo. You can adjust the volume of spoken instructions and hands-free calls separately by changing the volume on your TomTom navigation device.

Using the radio

Your TomTom navigation device shows the radio station that you are tuned to and the frequency.



You can save the a station so that it is a preset. There are 6 presets per radio band. To save a frequency, press and hold the number that you want to use to save the frequency. When the colour of the button changes, the frequency is saved.

Using an iPod® and USB storage devices

You can use your TomTom navigation device to play songs and videos saved on an iPod® and songs stored on a USB storage device. The cable for connecting an iPod to your car stereo is available as an accessory.

Note: Your TomTom must be docked in the car stereo to play back music or videos stored on an iPod® or USB storage device

When you connect an iPod® or USB storage device and select one of these as the audio input source, your car stereo starts to play the first song on the iPod® or USB storage device.

To select your iPod® or USB storage device, press the **Source** button on your car stereo until **iPod** or **USB** is shown on the display on your car stereo. To select the song to play, tap **Select**. You can then choose the songs you want to listen to.



- **Playlist** - tap this button to select a playlist.

Note: You can create playlists in a third-party application like iTunes®, Musicmatch® or Winamp®. You must change the extension of playlist files on USB storage devices from .M3U to .PLA.

- **Song** - tap this button to select from all the songs.
- **Artist** - tap this button to select a song by a particular singer or group.
- **Genre** - tap this button to select a particular type of music.
- **Album** - tap this button to select from a list of all the albums.
- **Audiobooks** - tap this button to select an Audiobook. Audiobooks can be played from an iPod.
- **Video** - tap this button to play videos stored on your iPod. Videos stored on a USB storage device cannot be played.

Important: You should not select songs or videos, or watch videos while driving as this is dangerous.

To skip to the next or previous song, use the controls on the car stereo.

Note: Not all mp3 files contain information about the song, such as the artist or genre. If the file contains no information, the file name is used as the song title.

Back eye camera

The view from the back eye camera on your car can be shown on your TomTom navigation device. The back eye camera must be connected properly and your navigation device must be docked in the car stereo.

To show the view from the back eye camera, press and hold the **Screen** button on the car stereo until the back eye camera is shown. To switch back from the back eye camera, press and immediately release the **Screen** button.

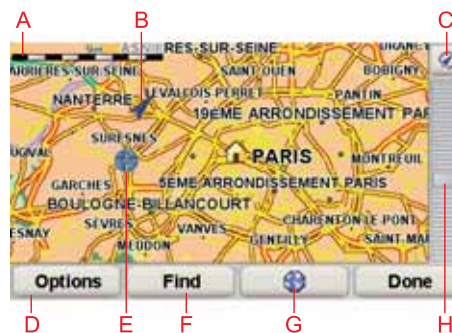
To switch automatically to the back eye camera when you are reversing the car, set this in the Main unit settings.

For information about the Main unit settings, see the documentation for the car stereo.

8. Browse Map

To look at the map in the same way as you might look at a traditional paper map, tap **Browse map** in the Main Menu.

You can move the map by touching the screen and moving your finger across the screen.



A The scale bar

B Your current position.

C GPS button

Tap this button to centre the map on your current position.

D Options

E The cursor

F The Find button

Tap this button to find specific addresses.

G The Cursor button

Tap this button to navigate to the cursor position, make a Favourite of the cursor position, or find a Point of Interest near the cursor position.

H The zoom bar

Zoom in and out by moving the slider.

Cursor button

You can use the cursor to find addresses and Points of Interest (POIs), for example, restaurants, train stations and petrol stations.

Position the cursor over a location on the map, then tap one of the following buttons:



Navigate there

Tap this button to navigate to the cursor position. Your TomTom will calculate the route.



Find POI nearby

Tap this button to find a POI near the cursor position. For example, if you have found a restaurant to go to, you can search for a parking garage nearby.



Call...

Tap this button to call the location at the cursor position. This button is only available if your TomTom has the phone number for the location.

The phone numbers of many POIs are stored in your TomTom. If you enter phone numbers for POIs that you create, you can also call them.



Add as Favourite

Tap this button to create a Favourite at the cursor position.



Add as POI

Tap this button to create a POI at the cursor position.



Correct location

Tap this button to correct the location shown at the cursor position.

9. TomTom Map Share

TomTom Map Share™ is a free service that lets you make updates to your map and share those updates with other members of the TomTom Map Share community.

If you find a street that has recently been blocked to traffic, you can use Map Share to update your map and then share the update with other Map Share members.

You can use Map Share to send and receive map updates during the first year after the map's release date. This means that one year after the release date, you will no longer be able to send or receive map updates for that version of the map. You will still be able to make your own map updates for use on your device.

When you join the TomTom Map Share community you can keep your maps up-to-date with the latest updates made by other Map Share community members.

You choose the type of updates you want and each time you connect your TomTom to TomTom HOME, the map is automatically updated.

TomTom Map Share community

To join the Map Share community, do the following:

1. Tap **Map corrections** in the Main Menu.

Tip: If you cannot see the **Map corrections** button in the Main Menu, tap **Show ALL menu options** in the Preferences menu.

2. Tap **Download corrections made by others**.
3. Tap **Join**.

When you connect your TomTom to your computer, TomTom HOME automatically downloads any available map updates and sends any changes you have made, to the Map Share community.

Map updates

There are two types of map update:

- Updates that are immediately shown on the map. These include, changing the traffic flow of a street, blocking or renaming a street and adding or editing POIs.

This type of change is immediately shown on your own map. You can hide these updates at any time in the Map Share preferences menu.

- Updates that are reported to TomTom to be shown on the map after they are verified. These include, missing streets, errors in motorway entrances and exits and missing roundabouts.

This type of update is investigated by TomTom and once verified, is included in the next map release. These updates are therefore not shared with the Map Share community.

Tip: If you cannot see the **Map corrections** button in the Main Menu, tap **Show ALL menu options** in the Preferences menu.

Making a map update



1. Tap **Map corrections** in the Main Menu.
2. Tap **Correct a map error**.
A list of possible map updates is shown.
3. Tap the button to select the type of update you want to report.

***Note:** If you tap **Add missing POI** or **Report other error** you will be asked for some additional information before the next step.*

4. Tap the button to select how to search for the location on the map.
5. When you have found the location, tap **Done**.
6. Enter the details of the update and decide if you want to share the update.

Marking a map error while on the move

If you notice an item on your map that needs attention, you can mark the location using the **Report** button and then enter the details when you are no longer driving.

To show the **Report** button in the Driving View, do the following:

1. Tap **Map corrections** in the Main Menu.

Tip: If you cannot see the **Map corrections** button in the Main Menu, tap **Show ALL menu options** in the Preferences menu.

2. Tap **Correction preferences**.
3. Tap **Done** and then tap **Done** again.
4. Select **Show report button**, then tap **Done**.

The **Report** button is shown on the left-hand side of the Driving View. After you mark a location, you can add more information about the change when you open the **Map corrections** menu.

For example, you are driving to a friend's house and you notice that the name of the street you are on is different from the one on your map. To report the change, tap the **Report** button and your TomTom will save your current location. You can then send the update to TomTom Map Share when you have finished your journey.

Receiving the latest map updates

When you connect your TomTom to your computer, TomTom HOME automatically downloads any available map updates and sends any changes you have made, to the Map Share community.

Changing my preferences for map updates

Open Correction preferences to change the settings for TomTom Map Share.

You can change the following settings:

- Choose what types of updates you want to use on your maps.
- Decide if you want to share your updates with others.
- Show or hide the **Report** button in the Driving View.

To set your preferences, do the following:

1. Tap **Map corrections** in the Main Menu.
2. Tap **Correction preferences**.
A list of update types is shown.
3. Tick the box next to each update type you want use.
4. Tap **Done**.
5. Choose how you want to share your map updates with the Map Share community, then tap **Done**.
6. Choose if you want to see the **Report** button in the Driving View.
7. Tap **Done**.

Tip: If you later decide you want to remove updates from the map, clear the checkbox next to the types of update you want to remove. If you clear all the checkboxes, your map returns to the original state before the first update.

Map update categories

There are several types of update that you can make to a map.

To make an update to your map, tap **Map corrections** in the Main Menu then tap **Correct a map error**. The following types of updates are shown.



(Un)block street

Tap this button to block or unblock a street. You can block or unblock the street in one or both directions.

For example, to correct a street near to your current location, do the following:

1. Tap **(Un)block street**.
2. Tap **Near you** to select a street near your current location. You can select a street by name, a street near your Home location or a street on the map.
3. Select the street or section of a street you want to correct by tapping it on the map.

The street you select is highlighted and the cursor shows the name of the street.

4. Tap **Done**.

Your device shows the street and whether the traffic is blocked or allowed in each direction:



5. Tap one of the direction buttons to block or unblock the flow of traffic in that direction.
6. Tap **Done**.

The next time you connect your device to TomTom HOME, your updates are shared with the TomTom Map Share community.



Reverse traffic direction

Tap this button to correct the traffic direction of a one-way street, where the direction of traffic is different to the direction shown on your map.

Note: Reverse traffic direction only works for one-way streets. If you select a two-way street you will be given the chance to block/unblock the street rather than changing the direction.



Edit street name

Tap this button to change the name of a street on your map.

For example, to rename a street near to your current location:

1. Tap **Edit street name**.
2. Tap **Near you**.
3. Select the street or section of a street you want to correct by tapping it on the map.

The street you select is highlighted and the cursor shows the name of the street.

4. Tap **Done**.
5. Type the correct street name.
6. Tap **Done**.



Add missing POI

Tap this button to add a new Point of Interest (POI).

For example to add a new restaurant near to your current location:

1. Tap **Add missing POI**.
2. Tap **Restaurant** in the list of POI categories.
3. Tap **Near you**.
4. Select the location of the missing restaurant.

You can select the location by entering the address or by selecting the location on the map. Select **Near you** or **Near home** to open the map at your current location or at your Home location.

5. Tap **Done**.
6. Type the name of the restaurant then tap **OK**.
7. If you know the telephone number of the restaurant you can type it, then tap **OK**.

If you don't know the number, just tap **OK** without typing a number.



Edit POI

Tap this button to edit an existing POI.

You can use this button to make the following changes to a POI:

- Delete the POI.
- Rename the POI.
- Change the telephone number of the POI.
- Change the category that a POI belongs to.
- Move the POI on the map.



Report other error

Tap this button to report other types of update.

These updates are not immediately corrected on your map. Your TomTom sends a special update report to TomTom Map Share.

You can report missing streets, errors in motorway entrances and exits and missing roundabouts. If the update you want to report is not covered by any of these report types, enter a general description then tap **Other**.

10. Help me!

Help me! provides an easy way to navigate to emergency services centres and other specialist services and contact them by phone.

For example, if you are involved in a car accident, you could use Help me! to call the nearest hospital and tell them your exact location.

Tip: If you do not see the **Help me!** button in the Main Menu, tap **Show ALL menu options** in the Preferences menu.

How do I use Help me! to phone a local service?

You can use Help me! to find and make contact with a service centre.

If your phone is connected to your TomTom, your TomTom automatically dials the phone number.

To use Help me! to locate a service centre, contact the centre by phone and navigate from your current location to the centre, do the following:

1. Tap the screen to bring up the Main Menu.
2. Tap **Help me!**
3. Tap **Phone for help**.
4. Select the type of service you require, for example, Nearest hospital.
5. To dial, select a centre from the list, the nearest is shown at the top of the list.

Once the call is answered your TomTom shows your position on the map along with a description of the location. This helps you explain where you are while making a call.

6. To navigate your way to the centre on foot, tap **Walk there**.

Your TomTom starts guiding you to your destination.

Options



Phone for help

Use your TomTom to find the location of a service, and the contact details.

- Emergency services
- Emergency breakdown services
- Nearest police station
- Nearest doctor
- Nearest hospital
- Nearest public transport
- Nearest car repair services
- Nearest dentist
- Nearest pharmacy
- Nearest vet

Note: In some countries, information may not be available for all services.



Drive to help

Use your TomTom to navigate your way by road to a service centre.

- Nearest car repair services
- Nearest hospital
- Nearest doctor
- Nearest police station
- Nearest pharmacy
- Nearest dentist

Note: In some countries, information may not be available for all services.



Walk to help

Use your TomTom to navigate your way on foot to a service centre.

- Nearest petrol station
- Nearest public transport
- Nearest police station
- Nearest pharmacy
- Home
- Nearest doctor

Note: In some countries, information may not be available for all services.



Where am I?

Your TomTom shows your current location.

You can then tap **Phone for help** to select the type of service you want to contact.



First Aid guide

Tap this button to read the British Red Cross First Aid guide.



Other guides

Tap this button to read a selection of useful guides.

11. Favourites

What are Favourites?

Favourites are places that you often visit. You can create Favourites so that you don't have to enter the address every time you want to navigate there.

They don't have to be places you especially like, just useful addresses.

How can I create a Favourite?

From the Main Menu, tap **Add Favourite**.

*Note: The button **Add Favourite** may not be shown on the first page of the Main Menu. Tap the arrow to open other pages in the Main Menu.*

You can then select the location of the Favourite from the list below.

Give your Favourite a name that is easy to remember. Your TomTom will always suggest a name, usually the address of the Favourite. To enter the name, just start typing. You don't have to delete the suggested name.



Home

You can set your Home location as a Favourite.



Favourite

You cannot create a Favourite from another Favourite. This option will always be unavailable in this menu.

To rename a Favourite, tap **Manage Favourites** in the Preferences menu.



Address

You can specify an address to be a Favourite. When you enter an address, you can choose from four options.

- **City centre**
 - **Street and house number**
 - **Postcode**
 - **Crossing or intersection**
-



Recent destination

Select a Favourite location from a list of places you have recently used as destinations.



Point of Interest

You can add a Point of Interest (POI) as a Favourite.

Does it make sense to do this?

If you visit a POI you particularly like, for example a restaurant, you can add it as a Favourite.

To add a POI as a Favourite, tap this button, then do the following:

1. Narrow your choice of POIs by selecting the area where the POI is.

You can select one of these options:

- **POI near you** - to search from a list of POIs near your current position.
- **POI in city** - to choose a POI in a particular town or city. You have to specify a town or city.
- **POI near Home** - to search from a list of POIs near your Home location.

If you are currently navigating to a destination, you can also select from a list of POIs which are on your route or near your destination. Choose one of these options:

- **POI along route**
- **POI near destination**

2. Select the category of POI.

Tap the category of POI if it is shown or tap the arrow to choose from the complete list.

Tap **Any POI category** to search for a POI by name.



My location

Tap this button to add your current position as a Favourite.

For example, if you stop somewhere interesting, while you are there you can tap this button to create the Favourite.



Point on map

Tap this button to create a Favourite using the map browser.

Select the location of the Favourite using the cursor, then tap **Done**.



Latitude Longitude

Tap this button to create a Favourite by entering latitude and longitude values.



TomTom Buddy

Tap this button to create a Favourite of the current position of a TomTom Buddy.

How can I use a Favourite?

You will normally use a Favourite as a way of navigating to a place without having to enter the address. To navigate to a Favourite, do the following:

1. Tap the screen to bring up the Main Menu.
2. Tap **Navigate to...**
3. Tap **Favourite**.
4. Select a Favourite from the list.

Your TomTom calculates the route for you.

5. When the route is calculated, tap **Done**.

Your TomTom will immediately start guiding you to your destination with spoken instructions and visual instructions on the screen.

How can I delete a Favourite?

1. Tap the screen to bring up the Main Menu.
2. Tap **Change preferences** to open the Preferences menu.
3. Tap **Manage Favourites**.
4. Tap the Favourite you want to delete.
5. Tap **Delete**.

How can I change the name of a Favourite?

1. Tap the screen to bring up the Main Menu.
2. Tap **Change preferences** to open the Preferences menu.
3. Tap **Manage Favourites**.
4. Tap the Favourite you want to rename.
5. Tap **Rename**.

12. Points of Interest

Points of Interest or POIs are useful places on the map. Here are some examples:

- Restaurants
- Hotels
- Museums
- Parking garages
- Petrol stations

Showing POIs on the map

1. Tap **Show POIs on map** in the Preferences menu.



2. Select the POI categories to display on the map.

Tap **Find** to search for a POI by name.

3. Tap **Done**.

The POIs you have selected are shown as symbols on the map.

Calling a POI

Your TomTom knows the phone numbers for many POIs. You can, for example, call a restaurant to book a table.

To call a POI tap **Call POI** in the Main Menu.

Navigating to a POI

You can use a POI as your destination. For example, if you are travelling to an unfamiliar city, you could choose a POI to help find a parking garage.

1. Tap the screen to bring up the Main Menu.
2. Tap **Navigate to...** in the Main Menu.
3. Tap **Point of Interest**.
4. Tap **POI in city**.
5. Narrow your choice of POIs by selecting the area where the POI is located.

You can select one of these options:

- **POI near you** - to choose from a list of POIs near to your current location.
- **POI in city** - to find a POI in a particular town or city.
- **POI near Home** - to choose from a list of POIs near to your Home location.

You can select from a list of POIs which are along your route or close to your destination. Choose from one of these options:

- **POI along route**
- **POI near destination**

Note: The last POI you viewed is also shown so that you can plan a route there more quickly.

6. Type the name of the town you want to visit and select the town when it appears in the list.

7. Select the category of POI:

Tap **Any POI category** to search for a POI by category name.

Tap the category of POI, if it is shown.

Tap the arrow to choose from the complete list of categories. Select the category from the list or start to type the name of the category and select it when it appears in the list.

8. Tap **Parking garage**.

9. From the list of POIs shown, select the POI you want to navigate to.

The table below explains the distances listed next to each POI.

POI near you	Distance from your current location
POI in city	Distance from the city centre
POI near Home	Distance from your Home location
POI along route	Distance from your current location
POI near destination	Distance from your destination

If you know the name of the POI, tap **Find** and type the name. Select it from the list when it is shown.

The next screen shows more detailed information including the location of the POI on the map and the phone number of the POI, if available.

Tap **Select** to confirm you want to plan a route to this POI.

Once you have selected a POI, the route to the POI is calculated by your TomTom.

Managing POIs



Manage POIs

Tap **Manage POIs** from the Preferences menu.

*Note: The **Manage POIs** button is only available when all menu buttons are shown. To show all menu buttons, tap **Show ALL menu options** in the Preferences menu.*

You can, for example, do the following:

- Create your own POI categories and add POIs to them.
- Set warnings when you get close to POIs.

Why would I want to create my own POIs?

A POI acts like a shortcut - once you have saved a location as a POI you never have to type the address of that POI again. But when you create a POI you can save more than just the location.

- Phone number - when you create a POI, you can save a phone number with it.
- Categories - when you create a POI you have to put it in a category.

For example, you could create a category of POIs called 'Favourite restaurants'. With each POI, save their phone number so that you can call them from your TomTom to reserve a table.

For example, you could create a category of POIs called 'Favourite restaurants'. With each POI, save their phone number so that you can call them to reserve a table.

How can I create my own POIs?

1. Tap the screen to bring up the Main Menu.
2. Tap **Change preferences**.
3. Tap **Manage POIs**.
4. Before you can add a POI, you have to create at least one POI category. Every POI is assigned to a POI category. You can only add POIs to POI categories you have created yourself.



Add POI category

Tap **Add POI category**.

5. Enter a name for your POI category, for example, 'Friends' or 'Favourite restaurants'. Then select a marker for your POI category.
6. Tap **Add POI**.



Tap this button to add a POI.

7. You are asked to name the POI.
8. Select the POI category in which you want to add the POI.
9. Select the location of your POI from the list below.



You can set your Home location as a POI.

If you want to change your Home location, you can create a POI of the Home location before you change it.



You can create a POI from a Favourite.

You can only create a limited number of Favourites. If you want to create more Favourites you have to delete some Favourites first. Before you delete a Favourite, make it into a POI so that you don't lose the address.



You can specify an address to be a POI. When you enter an address, you can choose from four options.

- **City centre**
- **Street and house number**
- **Postcode**
- **Crossing or intersection**



Select a POI location from a list of places you have recently used as destinations.



You can add a Point of Interest (POI) as a POI. For example, if you are creating a category of POIs for your favourite restaurants, use this option instead of entering the addresses of the restaurants.



Tap this button to add your current position as a POI.

For example, if you stop somewhere you like, while you are there you can tap this button to create the POI.



Tap this button to create a POI using the map browser.

Select the location of the POI using the cursor, then tap **Done**.



Latitude
Longitude

Tap this button to create a POI by entering latitude and longitude values.



TomTom
Buddy

Tap this button to make a POI of the current position of a TomTom Buddy.

How can I set warnings for POIs?

1. Tap the screen to bring up the main menu.
2. Tap **Change preferences**.
3. Tap **Manage POIs**.

*Note: The **Manage POIs** button is only available when all menu buttons are shown. To show all menu buttons, tap **Show ALL menu options** in the Preferences menu.*

4. Tap **Warn when near POI**.



Warn when
near POI

Tap this button to receive a warning when you travel near to the location of a POI.

5. Select the category of POI you want to be warned about.

Select the category from the list or start to type the name of the category and select it when it is shown in the list.
6. Set how close the POI should be when you receive a warning.
7. Choose the warning sound for the category of POI you selected.

13. Itinerary Planning

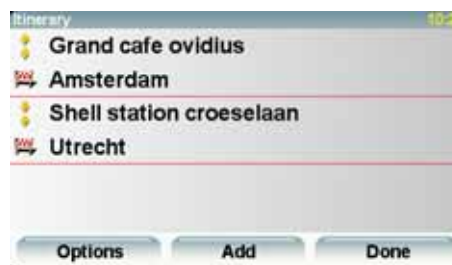
What is an Itinerary?

An Itinerary is a plan for a journey including more locations than your final destination.

An Itinerary can include the following items:

- Destination - a location on your journey where you want to stop.
- Waypoint - a location on your journey where you want to travel through without stopping.

Here's an example of an Itinerary:



Destinations are shown using this symbol.



Waypoints are shown using this symbol.

When would I use an Itinerary?

You could use an Itinerary for trips such as:

- A driving holiday through a country with lots of stops.
- A two day car journey with an overnight stop.
- A short drive which passes by Points of Interest.

In all these examples you could tap **Navigate to...** for each place. However, if you use an Itinerary, you can save time by planning everything in advance.

Creating an Itinerary

1. Tap the screen to bring up the Main Menu.
2. Tap **Itinerary planning**.



**Itinerary
planning**

The Itinerary planning screen opens. At first, there are no items on the Itinerary.

***Note:** This button may only be available if all menu options are shown. To show all menu options, tap **Show ALL menu options** in the Preferences menu.*

3. Tap **Add** and select a location.

Tip: You can add items to your Itinerary in any order and rearrange the order later.

Following an Itinerary

When you use an Itinerary to navigate, the route will be calculated to the first destination on the Itinerary. Your TomTom calculates the remaining distance and time to the first destination and not for the whole Itinerary.

As soon as you start to use an Itinerary, the route is calculated from your current position. You do not need to set a departure point.

When you have passed a waypoint or reached a destination, it is marked as visited.

Waypoints are shown on the map. Your TomTom will not warn you, when you are approaching a waypoint or when you arrive at a waypoint.

Organising an Itinerary

Tap an item on your Itinerary to open a page of buttons for editing the item. The buttons shown below are available.



**Mark as
waypoint**

You can change a waypoint into a destination using this button.

Remember that waypoints are points on your journey to your destination that you want to pass and destinations are places where you want to stop.

This button is only shown if the item you tapped is a destination.



**Mark as
destination**

You can change a waypoint into a destination using this button.

Remember that destinations are places where you want to stop, and waypoints are points on your journey to your destination that you want to pass.

This button is only shown if the item you tapped is a waypoint.



Mark 'visited'

Tap this button to miss out part of your Itinerary. Your TomTom will ignore this item and all the items before it in the Itinerary.

It will navigate you to the next item in the Itinerary.

This button is only shown if you are still due to visit this item.



Tap this button to repeat part of your Itinerary. Your TomTom will navigate you to this item followed by the rest of the items in the Itinerary.

This button is only shown if you have already visited this item.

Mark 'to visit'



Tap this button to move the item up the Itinerary.

This button is unavailable if the item is at the top of the Itinerary.

Move item up



Tap this button to move the item down the Itinerary.

This button is unavailable if the item is at the bottom of the Itinerary.

**Move item
down**



Tap this button to see the location of the item on the map.

Show on map



Tap this button to delete the item from the Itinerary.

Delete item

Start using an Itinerary

Tap **Options**, then tap **Start navigation**.

To save an Itinerary, tap **Save Itinerary**.

To load a saved Itinerary, tap **Load Itinerary**.

To create a new Itinerary, tap **New Itinerary** and to delete one, tap **Delete Itinerary**.

14. Hands-free calling

If you have a mobile phone with Bluetooth®, you can use your TomTom to make phone calls and send and receive messages.

Note: *Not all phones are supported or compatible with all features. For more information, go to www.tomtom.com/phones/compatibility.*

Connecting to your phone

First you must establish a connection between your mobile phone and your TomTom.

Tap **Mobile phone** in the **Main Menu** and then follow the instructions on the screen.

You only need to do this once, after which your TomTom will remember your phone.

Setting up TomTom Services

When you have established a connection with your phone, you can set up a wireless data connection for TomTom Services.

Tips

- Make sure that you switch on Bluetooth® on your phone.
- Make sure that your phone is set to 'discoverable' or 'visible to all'.
- You may have to enter the password '0000' on your phone in order to connect to your TomTom.
- Make your TomTom a trusted device on your phone. Otherwise you have to enter '0000' every time.

See your phone's user guide for information about Bluetooth® settings.

Your phonebook

You can copy your phonebook from your mobile phone to your TomTom so that you can make calls with just a few taps on the screen.

This is the safest way to make hands-free calls.

Note: *You can copy your phonebook to your TomTom at any time. From the Mobile phone menu, tap **Get numbers from phone**.*

Not all phones can transfer their phonebook to your TomTom. For more information, visit www.tomtom.com/phones/compatibility.

Making a call

Once you have established a connection with your phone, you can start making calls.

1. Tap **Mobile phone** in the Main Menu.
2. Tap **Call**.

***Note:** Make sure that your phone is currently selected. The current phone is shown at the bottom of the screen.*

3. Tap **Number** to enter a number to call.
4. Do one of the following:
 - Tap **Home** to call your Home location. If you have not entered a number for your Home location this button is unavailable. To enter a number, tap **Change Home number** in the **Phone preferences** menu.
 - Tap **Number** to enter a number to call.
 - Tap **Point of Interest** to choose a Point of Interest (POI) to call. If your TomTom knows the phone number of a POI, this is shown next to the POI.
 - Tap **Phonebook entry** to select a contact from your phonebook.

***Note:** If you have not copied your phonebook to your TomTom, the button **Phonebook entry** is unavailable.*

- Tap **Recently dialed** to select from a list of people or numbers you have called recently using your TomTom.
- Tap **Recent caller** to select from a list of people or numbers who called you recently. Only calls you have received on your TomTom are saved in this list.

Receiving a call

If someone calls you while you are driving, accept or reject the call by tapping the screen.

Auto-answer

You can tell your TomTom to answer every call automatically after a certain time. Tap **Phone preferences** in the mobile phone menu, then tap **Auto-answer preferences**.

Select when your TomTom will automatically answer your calls.

Sharing your TomTom

To add more phones, do the following. You can establish connections for up to 5 mobile phones.

1. Tap **Mobile phone** in the Main Menu.
2. Tap **Connect to your phone**.
3. Tap **Find other phone...** and follow the instructions on the screen.

To switch between phones, tap **Connect to your phone** and then select your phone from the list.

Mobile phone menu

The available buttons are listed below:



Redial

Tap this button to redial a telephone number using your mobile phone.



**Read/Write
message**

Tap this button to read or write a message.



**Phone
Preferences**

Tap this button to configure how your TomTom communicates with your mobile phone.



Call...

Tap this button to dial a telephone number using your mobile phone.



**Get phone-
numbers
from phone**

Tap this button to load the contacts and phone numbers from your mobile phone onto your TomTom.



**Manage
phones**

Tap this button to manage the mobile phones that will be connected to your TomTom. You can add a profile for up to five different mobile phones.

15. Preferences

Hidden buttons and features

When you first start using your TomTom, all the buttons are shown in the menu.

The buttons for the more advanced features can be hidden. This is a useful option because you are unlikely to use certain features very often.



Show fewer menu options

Tap this button in the Preferences menu, to reduce the number of buttons that are shown.

You might want to do this so that only frequently used buttons are shown.

When you need to use the buttons that are hidden, you can press **Show ALL menu options** in the Preferences menu to show all buttons.



Show ALL menu options

Tap this button in the Preferences menu, to show all the buttons available on your TomTom.

Use night colours / Use day colours



Use Night colours

Tap this button to reduce the brightness of the screen and show darker colours on the map.

When should I use this?

When it's dark, it is easier to see the screen if the display on your TomTom is not brightly lit.



Use day colours

To change back to a brighter screen showing brighter colours on the map, tap **Use day colours**.

Can my TomTom make this change automatically?

Yes. Your TomTom has a light sensor to tell when it is getting dark.

To change to night and day colours automatically, tap **Brightness preferences** in the Preferences menu. Then select **Switch to night view when dark**.

Show POI on map



Tap this button to set which categories for the Points of Interest (POIs) should be shown on the map:

1. Tap **Show POIs on map** in the Preferences menu.
2. Select the POI categories to display on the map.

Tap **Find** to search for a POI category.

3. Tap **Done**.

The POIs you have selected are shown as symbols on the map.

Safety preferences



Tap this button to set the following safety preferences:

- **Hide most menu options while driving**
- **Suggest driving breaks**
- **Show safety reminders**
- **Warn when near places of worship or schools**
- **Warn when driving faster than allowed**
- **Warn when driving faster than a set speed**
- **Warn not to leave the device in the car**

If you select one or more of the warnings, you will also be asked to select a sound to be played whenever a warning is displayed.

Select whether or not your TomTom should warn you about which side of the road you should be driving on.

Decide if you want the map display to be turned off in special circumstances and press **Done**.

What happens when I use the Turn off map display option?

When you turn off the map display, instead of seeing your position on a map in the Driving View, you will only see information about the next instruction.

Tap the button and select an option for when the map should be turned off. These are the options:

- **Always** - The map will not be shown and you will only see information about the next instruction and arrows showing direction.
- **Above a certain speed** - you set the speed at which point the map will be turned off. This option is useful for situations when the map might be distracting, such as when you are driving fast.
- **Never** - the map is never turned off.

Voice preferences



Voice preferences

Tap **Voice preferences** to manage your TomTom voices. The following options are available:

- **Change voice** - tap this button to change the voice that gives you instructions.
A wide range of recorded human voices and computer voices are available.
- **Disable voice** - tap this button to disable the use of voices. To enable voices, tap **Enable**.
- **Speech preferences** - tap this button to set the situations when your TomTom will read instructions or warnings aloud.
- **Record voice** - tap this button to record your own voice for use by your TomTom. The procedure takes about fifteen minutes, during which time you will say all the commands that are used by your TomTom.

In the Preferences menu, tap **Voice preferences**, then tap **Record voice** and follow the instructions for recording your voice.

- **Disable recorded voice**
- **Enable recorded voice**
- **Download voice** - tap this button to download new voices from TomTom Services and transfer them to your TomTom.

Turn off sound / Turn on sound



Turn off sound

Tap this button to turn off sound. If you turn off the sound, warnings for upcoming POIs are also turned off.

The button changes to **Turn on sound**.

Tips

To change the volume, tap **Volume preferences** in the Preferences menu.

To change the volume quickly while you are driving, tap the bottom left-hand section of the Driving View and move the slider.

To change the voice being used by your TomTom, tap **Change voice** in the Voice preferences menu.

Can I still use my TomTom to make hands-free calls when the sound is turned off?

Yes. Turning the sound off does not affect hands-free calling, meaning that you will still be able to talk to and hear the caller.

Volume preferences



Volume preferences

Tap this button to change the volume.

Manage Favourites



Manage Favourites

Tap this button to rename or delete Favourites.

To find a Favourite quickly, tap **Find**, then start to type the name of the Favourite. As soon as the Favourite is shown in the list, you can select it.

Change Home location



Change Home location

Tap this button to set or change your Home location.

Do I need to use my actual home address for the Home location?

No. Your Home location can be a place you go often, for example, your office. It can be your actual home address, but it can be any address you like.

Why should I set a Home location?

Having a Home location means that you have a quick and easy way to navigate there, by tapping the Home button in the **Navigate to...** menu

Manage maps



Manage maps

This button may only be available if all menu options are shown. To show all menu options, tap **Show ALL menu options** in the Preferences menu.

Tap this button to do the following:

- **Download a map** - tap this button to download a map you have bought using TomTom HOME. It may not be possible to download maps on all devices.
- **Switch map** - tap this button to change the map you are using.
- **Download free map corrections** - tap this button to download map corrections provided as part of the Map Share service.
- **Delete a map** - tap this button to delete a map. This might be necessary to create more space on your TomTom, for example when you want to load a different map.

Note: Don't delete a map unless you have already made a backup of the map. If you delete a map before you make a backup, you will no longer be able to load the map on your TomTom.

Use TomTom HOME to make backups, download, add and delete maps from your navigation device.

Manage POIs

This button may only be available if all menu options are shown. To show all menu options, tap **Show ALL menu options** in the Preferences menu.



Manage POIs

Tap this button to do the following:

- Set alerts for when you are near POIs.

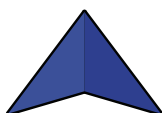
For example, your TomTom can tell you when there is a petrol station nearby.

- Create your own POI categories and add POIs to them.

For example, you could create a category of POIs called "Friends", and add all your friends' addresses as POIs in the category. You can even add your friends' phone numbers with their address so you can call them from your TomTom.

Change car symbol

This button may only be available if all menu options are shown. To show all menu options, tap **Show ALL menu options** in the Preferences menu.



Change car symbol

Tap this button to select a car symbol that will be used to show your current position in the Driving view.

Change 2D/3D display / Turn on 2D display



Turn on 2D display

Tap **Turn on 2D display** to change the perspective for viewing the map.

For example, the 2D view shows a two dimensional view of the map as though viewed from above.



Change 2D/3D display

To switch the view to a three dimensional perspective, tap **Change 2D/3D display** and select a view from the list.

When should I use this?

In some situations, it is easier to see the map from above. Perhaps if the road network is complicated or for times when you are walking while using your TomTom to navigate.

Compass preferences

This button may only be available if all menu options are shown. To show all menu options, tap **Show ALL menu options** in the Preferences menu.



Compass preferences

Tap this button to configure the compass. The following options are available:

- **None** - the compass is not shown.
- **One with arrow pointing north** - the arrow always points towards north and the direction you are moving is shown at the top of the compass.
- **One with arrow showing your heading** - the arrow always shows the direction you are moving.

If you select one of these options, you then need to select the features that are shown in the middle of the arrow:

- **Direction** - your direction is shown as a compass point, displayed in the centre of the compass arrow.
- **Degrees** - your direction is shown as compass degrees, displayed in the centre of the compass arrow.
- **Nothing**
- **One with arrow pointing to your destination** - the arrow always points towards your destination. The distance to your destination is displayed in the compass arrow.

Change map colours

This button may only be available if all menu options are shown. To show all menu options, tap **Show ALL menu options** in the Preferences menu.



Change map colours

Tap this button to select the colour schemes for day and night map colours.

You can also download more colour schemes from TomTom Services.

Brightness preferences

This button may only be available if all menu options are shown. To show all menu options, tap **Show ALL menu options** in the Preferences menu.



Brightness preferences

Tap this button to set the brightness of the screen.

Move the sliders to set the brightness separately for day map colours and for night map colours.

You can also set these options:

- **Turn brightness down when dark** - your TomTom uses a light sensor to detect the background light level. If this option is selected, as it gets darker, your TomTom reduces the brightness of the screen so that it is not distracting.
- **Switch to night view when dark** - your TomTom uses a light sensor to detect the background light level. If this option is selected, when it gets dark, your TomTom uses night colours for the Driving View.

You can set the map colour scheme by tapping **Change map colours**.

Status bar preferences

This button may only be available if all menu options are shown. To show all menu options, tap **Show ALL menu options** in the Preferences menu.



Status bar preferences

Tap this button to select the information shown on the status bar:

- **Remaining time** - the estimated time left until you reach your destination.
- **Remaining distance** - the distance left until you reach your destination.
- **Current time**
- **Arrival time** - your estimated arrival time.
- **Speed**
- **Direction**
- **Show next street name** - the name of the next street on your journey.
- **Show current street name**
- **Show leeway to arrival time** - your TomTom shows how late or early you will be compared with the preferred arrival time that is set during the planning of a route.
- **Show max speed next to speed** - only available when speed (above) is also selected.
- **How should the status bar be displayed?**

Horizontal - If you choose this option, the status bar will be shown at the bottom of the Driving view.

Vertical - If you choose this option, the status bar will be shown at the right-hand side of the Driving view.

Note: If the speed limit for the road you are on is available, it is shown next to your speed.

If you drive faster than the speed limit, your speed is shown in red.

Automatic zooming

This button may only be available if all menu options are shown. To show all menu options, tap **Show ALL menu options** in the Preferences menu.



Automatic zooming

Tap this button to enable or disable automatic zooming in the Driving View.

Quick menu preferences

This button may only be available if all menu options are shown. To show all menu options, tap **Show ALL menu options** in the Preferences menu.



Quick menu preferences

Tap this button to choose up to six buttons to be used in the Quick menu.

The Quick menu button enables easy access for your most commonly used buttons.

The buttons you assign for use with the Quick menu, are shown in the Driving View.

Guided tours

This button may only be available if all menu options are shown. To show all menu options, tap **Show ALL menu options** in the Preferences menu.



Guided tours

Tap this button to show one of the Guided tours on how to use your TomTom.

Name preferences

This button may only be available if all menu options are shown. To show all menu options, tap **Show ALL menu options** in the Preferences menu.



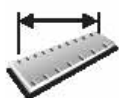
Name preferences

Tap this button to set the information that is shown on the map in the Driving View. The following options are available:

- **Show house number before street name**
- **Show street names** - if you are using a computer voice for spoken instructions and have selected that street names should be read aloud, you do not need to select this option, since the street names will be read aloud even though this option is not selected.
- **Show next motorway / signpost** - when this option is selected, the next major road on your route is shown at the top of the screen in the Driving View.
- **Show current street name on map**

Set units

This button may only be available if all menu options are shown. To show all menu options, tap **Show ALL menu options** in the Preferences menu.



Set units

Tap this button to set the type of units that will be shown for the following:

- Distance
- Time
- Latitude and longitude
- Temperature
- Air pressure

Operate left-handed / Operate right handed

This button may only be available if all menu options are shown. To show all menu options, tap **Show ALL menu options** in the Preferences menu.



Operate left-handed

Tap this button to move important buttons, for example, the **Done** and **Cancel** buttons as well as the zoom bar, to the left hand side of the screen. This makes it easier to tap the buttons with your left hand without blocking the screen.

To move the buttons back to the right hand side of the screen, tap **Operate right-handed**.

Keyboard preferences



Keyboard preferences

You use the keyboard to enter your destination or to find an item in a list, such as a POI.

Tap this button to select the size of the keys on the keyboard and the keyboard layout. You can select from two sizes:

- **Large keyboard**
- **Small keyboard**

Three keyboard layouts are available:

- **ABCD keyboard**
- **QWERTY keyboard**
- **AZERTY keyboard**

Planning preferences

This button may only be available if all menu options are shown. To show all menu options, tap **Show ALL menu options** in the Preferences menu.



Planning preferences

Tap this button to set the kind of route planned when you select a destination.

The following options are available:

- **Ask me every time I plan**
- **Always plan fastest routes**
- **Always plan shortest routes**
- **Always avoid motorways**
- **Always plan walking routes**
- **Always plan bicycle routes**
- **Always plan for limited speed**

You can then set if the route summary screen closes automatically after you have planned a route. If you select **No**, you have to tap **Done** to close the route summary screen.

Toll road preferences

This button may only be available if all menu options are shown. To show all menu options, tap **Show ALL menu options** in the Preferences menu.



Toll road preferences

Tap this button to set how your TomTom handles toll roads if they are on the route to a destination you set. You can choose from the following options:

- **Ask me when there are toll roads on my route** - you are asked if you want to avoid a toll road whenever you plan a route.
- **Always avoid toll roads**
- **Never to avoid toll roads**

Set owner

This button may only be available if all menu options are shown. To show all menu options, tap **Show ALL menu options** in the Preferences menu.



Set owner

Tap this button to enter your name and address as the owner of your TomTom and to change or delete a 4-digit password for your TomTom.

***Note:** You can only change or delete a 4-digit password on your TomTom.*

You can create a 4-digit password for your TomTom using TomTom HOME:

1. Connect your TomTom to your computer and turn on your TomTom and your computer.

TomTom HOME starts automatically.

2. Click on **Operate my** TomTom in TomTom HOME.

Your TomTom appears and can be controlled using TomTom HOME.

3. From the Main Menu, click **Change preferences**.

4. Click **Set Owner**. You can now set a 4-digit password for your TomTom.

You can only create a 4-digit password using TomTom HOME.

Show GPS status

This button may only be available if all menu options are shown. To show all menu options, tap **Show ALL menu options** in the Preferences menu.



Show GPS status

Tap this button to view navigational information such as satellite reception, map coordinates, current speed and direction.

Do not ask arrival time



Do not ask arrival time

Tap this button to stop your navigation device asking the arrival time when you plan a journey.

Start-up preferences

This button may only be available if all menu options are shown. To show all menu options, tap **Show ALL menu options** in the Preferences menu.



Start-up preferences

Tap this button to select what happens when your TomTom starts. The following options are available:

- **Continue where I left off** - your TomTom starts and shows the last screen that was shown when you turned off the device.
- **Show the Driving View** - your TomTom starts and shows the Driving View.
- **Ask for a destination** - your TomTom starts with **Navigate to...** menu. You can enter a destination immediately.
- **Show the Main Menu** - your TomTom starts with the Main Menu.
- **Start Slideshow** - your TomTom starts by showing a slideshow of the images stored there. To interrupt the slideshow, tap the screen.

You are then asked if you want to change the picture that is shown whenever you start your TomTom.

Tap **No** to finish or tap **Yes** to see the photos stored on your TomTom and tap on a photo to select that photo for use as your start-up picture.

Bluetooth preferences

This button may only be available if all menu options are shown. To show all menu options, tap **Show ALL menu options** in the Preferences menu.



Bluetooth preferences

Tap this button to disable or enable Bluetooth functionality on your TomTom.

Tap **Advanced** to set how the Bluetooth connection with your phone will be used.

You can select any of the following options:

- **Enable wireless data**
- **Enable hands-free calling**

In some places, such as hospitals and aeroplanes, you are required to turn Bluetooth off on all electronic devices.

Disable wireless data / Enable wireless data

This button may only be available if all menu options are shown. To show all menu options, tap **Show ALL menu options** in the Preferences menu.



Disable wireless data

Tap this button to block the reception of wireless data. You will still be connected to your mobile phone via Bluetooth and will still be able to receive and make hands-free calls. You will not be able to receive any data that uses a wireless data connection, such as TomTom Traffic.

To turn wireless data on again, tap **Enable wireless data**.

Send/Receive files

This button may only be available if all menu options are shown. To show all menu options, tap **Show ALL menu options** in the Preferences menu.



Send/Receive files

Tap this button to send or receive files, such as itineraries and voices, using your TomTom with other Bluetooth devices.

MyTomTom account

This button may only be available if all menu options are shown. To show all menu options, tap **Show ALL menu options** in the Preferences menu.



MyTomTom account

Tap this button to log in to your TomTom account.

If you have more than one TomTom account or if several people are sharing the same TomTom, you can create another TomTom account using a different email address.

Battery saving preferences

This button may only be available if all menu options are shown. To show all menu options, tap **Show ALL menu options** in the Preferences menu.



Battery saving preferences

Tap this button to configure your TomTom to conserve power when possible. The following options are available:

- **Never turn off screen**
- **Turn off screen between instructions**
- **Always turn off screen**

Then select whether or not you want to **Switch off when external power is lost**.

Change language



Change language

Tap this button to change the language used for all the buttons and messages you see on your TomTom.

You can choose from a wide range of languages. When you change the language, you are also given the opportunity to change the voice.

Set clock



Set clock

Tap this button to select the type of clock that is shown and set the time.

The easiest way to set the time is by tapping the **Sync** button. Your TomTom will then take the time from GPS information.

***Note:** After using **Sync** to set the time, you may have to adjust the hours depending on your time zone. Your TomTom works out your time zone and always keeps the time correct using GPS information.*

*You can only use **Sync** if you have GPS reception, so you cannot set the clock in this way when you are indoors.*

Hide tips / Show tips



Hide tips

This button may only be available if all menu options are shown. To show all menu options, tap **Show ALL menu options** in the Preferences menu.

Tap this button to stop your TomTom from showing tips.

To turn tips on again, tap **Show tips**.

Reset factory settings



Reset factory settings

This button may only be available if all menu options are shown. To show all menu options, tap **Show ALL menu options** in the Preferences menu.

Tap this button to restore the factory settings to your TomTom.

All your settings, including Favourites, your Home location, warnings for POIs and any Itineraries you have created are deleted.

16. TomTom Traffic

TomTom Traffic is a TomTom Service for receiving up-to-date traffic information. TomTom Traffic requires a wireless data connection (GPRS, EDGE, UMTS, CDMA).

TomTom Traffic uses the most up-to-date information from the best local sources. For more information about subscribing see tomtom.com/services

Setting up TomTom Traffic

To use TomTom Traffic, you need to establish a connection between your mobile phone and your TomTom device. If you have not already done so, tap **Mobile phone** in the **Main Menu** to establish this connection and then do the following:

1. Tap TomTom **Traffic** in the Main Menu.
2. Tap **Enable Traffic**.

Note: TomTom Traffic retrieves traffic information using a wireless data connection on your mobile phone. You must establish a Bluetooth connection between your phone and your device and you must also have a wireless data subscription with your mobile network operator.

3. Enter your username and password.

The Traffic sidebar is shown on the right-hand side of the Driving View and your device retrieves the latest traffic information from TomTom.



The following symbols are shown at the top of the Traffic sidebar:



Your device is busy retrieving traffic information.



Traffic information is up to date.



Traffic information has not been updated for at least 15 minutes.



Traffic information has not been updated for at least 30 minutes.



Traffic information has not been updated for at least 45 minutes.



Traffic information has not been updated for at least one hour.



No connection is available between your TomTom device and the TomTom Traffic server.

Tip: Providing you have a connection between your device and mobile phone, You can retrieve the latest traffic information straight away by tapping the **Update traffic info** button in the Traffic menu.

Using TomTom Traffic



If you have a route planned, the traffic sidebar warns you about any traffic incidents on your route.

In this example, there is a traffic jam on your route 9 kilometres ahead that will cause an expected delay of 38 minutes.

To find the quickest route to your destination, do the following:

1. Tap the Traffic sidebar.

Tip: If you have trouble tapping the Traffic sidebar and the Main Menu is being displayed instead of the traffic menu, try tapping your finger half on the Traffic sidebar and half off the screen.

2. Tap **Minimise delays**.

Your device looks for the quickest route to your destination.

It is possible that the new route may also include traffic delays, or may even be the same route as before. You can re-plan the route to avoid all delays, but this new route will take longer than the quickest route already shown.

3. Tap **Done**.

Changing traffic preferences

Use the **Change Traffic preferences** button to choose how traffic information works on your device.



To change your traffic preferences, do the following:

1. Tap the TomTom **Traffic** button in the Main Menu on your device.
2. Tap **Change Traffic preferences**.

You can change the following preferences:

- **Automatically minimise delays after every traffic update** - if you select this option, your device automatically recalculates your route when new delays occur on your route.
 - **Automatically update traffic info while on route** - if you select this option, your device automatically updates traffic information whenever you have a route planned.
 - **Beep when traffic situation on route changes** - if you select this option your device beeps when a new traffic incident occurs on your current route.
 - **Ask for traffic updates when preparing a route** - if you select this option, your device asks if you want to update traffic information before looking for any delays on routes that you plan.
3. Select or clear the check box next to each preference you want to change.
 4. Tap **Done**.
 5. If you chose to automatically update traffic information while on route (one of the options shown above), you are asked if you want to limit how often that information is updated.

Tap **No** to use the default interval of 4 minutes.

Tap **Yes** if you want to change the frequency of your automatic traffic updates.
 6. Tap **Done**.

The Traffic sidebar

The Traffic sidebar shows you the traffic incidents on your route. It shows the following information:

- A symbol for each traffic incident in the order they occur along your planned route.
- The estimated delay of the next traffic incident on your route.
- The distance from your current location to the first incident on the Traffic sidebar.

An example of a Traffic sidebar is shown below.



In the example, the Traffic sidebar shows you that there are two incidents ahead. Both incidents are traffic jams, the first is 15km ahead and is expected to delay you by at least 51 minutes.

To re-plan your route to avoid these incidents, tap the Traffic sidebar to open the TomTom **traffic** menu, then tap **Minimise traffic delays**.

Making commuting to work easier

The **Home to work** or **Work to home** buttons in the Traffic menu lets you check your route to and from work with one tap of a button. When you use either of these buttons, your device checks the route for possible delays, and if it finds any, provides you with the possibility to avoid them.

The first time you use **Home to work**, you must set your traffic home and work locations, do the following:



1. Tap the TomTom **Traffic** button in the Main Menu on your device.
2. Tap **Show home-work traffic**.
3. Tap **Change home-work**
4. Set your home location
5. Set your work location.

You can now use the **Home to work** and **Work to home** buttons of the Show home-work traffic menu.

Note: *The home location you set here is not the same as the home location you can set in the **Preferences Menu**. In addition, the locations you use here do not have to be your actual home and work locations. If there is another route that you often travel, you can set Work/Home to use these locations instead.*



For example, to check for delays on your route home, do the following:

1. Tap the TomTom **Traffic** button in the Main Menu on your device.
2. Tap **Show home-work traffic**.
3. Tap **Work to home**.

The route summary screen is shown, with the expected delay shown after the journey time.



To see if there is a quicker way home, you could now tap the **Find alternative** button and then tap **Minimise traffic delays**.

Tip: You can let your device automatically look for alternative routes by selecting **Automatically minimise delays after every traffic update** in your Traffic preferences.

Note: *It is possible that the alternative route could be longer than your original one (even with its delays). If this is the case, you could always try using the **Find alternative** button again.*

Checking traffic incidents in your area

Get an overview of the traffic situation in your area, using the map. To find local incidents and their details, do the following:



Browse map

1. Tap the TomTom **Traffic** button in the Main Menu on your device.
2. Tap **Browse map**.

The map browser screen is shown.

3. Tap the blue compass image in the top right of the screen.

The map centres itself on you current location, and any traffic incidents in the area are shown as small symbols.



4. Tap on any traffic incident to get more information.

A second screen is shown that gives you detailed information about the incident you chose. To display information about surrounding incidents use the left and right arrows at the bottom of this second screen.

Traffic incidents

Traffic incidents are displayed both on the Driving View and also on the Traffic sidebar as small symbols. There are two type of symbols:

- Symbols shown in a red square are incidents that Traffic can help you avoid.
- Symbols shown in a red rectangle are weather related, because of their nature, you cannot use Traffic to avoid them.

Traffic incident symbols and their meaning are shown below:



Accident



Road closed



Road works



Traffic incident



One or more lanes closed



Traffic jam

Weather related symbols and their meaning are shown below:



Fog



Ice



Rain



Snow



Wind



Note: The incident avoided symbol is shown for any traffic incident that you avoid using TomTom Traffic.

Traffic menu

Either, tap the Traffic sidebar in the Driving View or tap TomTom **Traffic** in the Main Menu to open the Traffic menu. The following buttons are available:



Minimise traffic delays

Tap this button to re-plan your route based on the latest traffic information.



Show traffic on route

Tap this button to see an overview of all traffic incidents on your route. You can use the left and right buttons on the resulting screen to see more detailed information about each of these incidents.



Show home-work traffic

Tap this button to calculate and show the quickest route from your home location to your place of work and back.



Read aloud traffic info

Tap this button to read aloud all traffic incidents along your route.



Update traffic info

Tap this button to get the latest traffic information straight away rather than waiting for an automatic update.



Disable Traffic

Tap this button to disable TomTom **Traffic**.



Help

Tap this button to view the guided tour on how to use TomTom **Traffic**.



Browse map

Tap this button to browse the map and see the traffic information displayed on the map.



Change Traffic preferences

Tap this button to change your preferences for how TomTom **Traffic** works on your device.

17. Traffic information using RDS-TMC

The Traffic Message Channel (TMC)

Information from the Traffic Message Channel (TMC) is used by your TomTom navigation device when your device is docked in the car stereo.

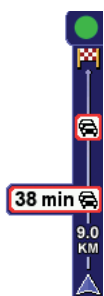
The Traffic Message Channel (TMC) is not a TomTom Service. FM radio stations in several countries broadcast TMC information as part of their programming. TMC is also known as RDS-TMC traffic information.

Your TomTom navigation device uses this information to warn you about traffic delays along your route and how you can avoid them.

Note: TomTom is not responsible for the availability or quality of traffic information provided by TMC.

TMC is not available in all countries or regions. See the Services and Accessories leaflet for more information.

Using RDS-TMC traffic information



As soon as you start receiving traffic information, the traffic sidebar is shown on the right side of the Driving View. The traffic sidebar warns you about any traffic incidents on your route.

In this example, there is a traffic jam on your route 9 kilometres ahead that will cause an expected delay of 38 minutes.

To find the quickest route to your destination, do the following:

1. Tap the Traffic sidebar.
2. Tap **Minimise traffic delays**.

Your device looks for the quickest route to your destination.

The new route may also include traffic delays, or may even be the same route as before.

3. Tap **Done**.

Changing traffic preferences

Use the **Change Traffic preferences** button to choose how traffic information works on your device.



To change your traffic preferences, do the following:

1. Tap the TomTom **Traffic** button in the Main Menu on your device.
2. Tap **Change Traffic preferences**.

You can change the following preferences:

- **Automatically minimise delays after every traffic update** - if you select this option, your device automatically recalculates when new delays occur on your route.
- **Beep when traffic situation on route changes** - if you select this option your device beeps when a new traffic incident occurs on your current route.
- **Ask for traffic updates when preparing a route** - this option has no effect in RDS traffic.

3. Select or clear the check box next to each preference you want to change.
4. Tap **Done**.

Your device lists the countries that have radio stations providing RDS-TMC traffic information that you can currently receive. Normally you can leave this set to **Any country (strongest signal)**.

5. Tap **Done**.

Making commuting to work easier

The **Home to work** or **Work to home** buttons in the Traffic menu lets you check your route to and from work with one tap of a button. When you use either of these buttons, your device checks the route for possible delays, and if it finds any, provides you with the possibility to avoid them.

The first time you use **Home to work**, you must set your traffic home and work locations, do the following:



1. Tap the TomTom **Traffic** button in the Main Menu on your device.
2. Tap **Show home-work traffic**.
3. Tap **Change home-work**
4. Set your home location
5. Set your work location.

You can now use the **Home to work** and **Work to home** buttons of the Show home-work traffic menu.



For example, to check for delays on your route home, do the following:

1. Tap the TomTom **Traffic** button in the Main Menu on your device.

2. Tap **Show home-work traffic**.

3. Tap **Work to home**.

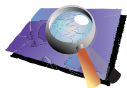
The route summary screen is shown, with the expected delay shown after the journey time.



To see if there is a quicker way home, tap **Find alternative** then tap **Minimise traffic delays**.

Tip: You can let your device automatically look for alternative routes by selecting **Automatically minimise delays after every traffic update** in the Traffic preferences.

Checking traffic incidents in your area



Browse map

Get an overview of the traffic situation in your area, using the map. To find local incidents and their details, do the following:

1. Tap the TomTom **Traffic** button in the Main Menu on your device.

2. Tap **Browse map**.

The map browser screen is shown.

3. Tap the blue compass image in the top right of the screen.

The map centres itself on your current location, and any traffic incidents in the area are shown as small symbols.



4. Tap on any traffic incident to get more information.

A second screen is shown that gives you detailed information about the incident you chose. To display information about surrounding incidents use the left and right arrows at the bottom of this second screen.

The Traffic sidebar

The Traffic sidebar is shown on the right side of the Driving View when TomTom **Traffic** is switched on. The Traffic sidebar shows you the traffic incidents on your route. It shows the following information:

- A symbol for each traffic incident in the order they occur along your planned route.

- The estimated delay to the next traffic incident on your route.
- The distance from your current location to the next incident on your route.

An example of a Traffic sidebar is shown below.



In the example, the Traffic sidebar shows you that there are two incidents ahead. Both incidents are traffic jams, the first is 15km ahead and is expected to delay you by at least 51 minutes.

To re-plan your route to avoid these incidents, tap the Traffic sidebar to open the TomTom **traffic** menu, then use **Minimise traffic delays**.

Traffic incidents

Traffic incidents are displayed both on the Driving View and also on the Traffic sidebar as small symbols. There are two type of symbols:

- Symbols shown in a red square are incidents that Traffic can help you avoid.
- Symbols shown in a red rectangle are weather related, because of their nature, you cannot use Traffic to avoid them.

Traffic incident symbols and their meaning are shown below:



Accident



Road closed



Road works



Traffic incident



One or more lanes closed



Traffic jam

Weather related symbols and their meaning are shown below:



Fog



Ice



Rain



Snow



Wind



Note: The incident avoided symbol is shown for any traffic incident that you avoid using TomTom Traffic.

Traffic menu

Tap the Traffic sidebar in the Driving View to open the Traffic menu. The following buttons are available:



Minimise traffic delays

Replans your route based on the latest traffic information.



Show home-work traffic

Checks the traffic along your Home to Work route.



Show traffic on route

Tap this button to show areas of traffic congestion along your current route.



Browse map

Shows an overview of traffic incidents on the map.



Change Traffic preferences

Changes the settings for Traffic services.



Read aloud traffic info

Tap this button to read aloud all traffic incidents along your route.

18. Introducing TomTom HOME

TomTom HOME is a free application for your computer that helps you manage the contents of your TomTom device. Connect to HOME frequently to get the latest updates for your device.

You can, for example, do the following:

- Manage maps, voices, POIs and more.
- Buy TomTom services and manage your subscriptions.
- Update your TomTom with the latest software and services automatically.
- Make and restore backups.
- Read the full version of the user manual.

Tip: To get the most from HOME, we recommend using a broadband internet connection.

Use TomTom HOME to make a backup of your device.

Installing TomTom HOME

To install TomTom HOME on your computer, do the following:

1. Connect your computer to the internet.
2. Connect your device to your computer using the USB cable, then switch your device on.

HOME starts to install.

Note: If HOME does not install automatically, you can also download it from tomtom.com/home

You can also install TomTom HOME from the CD supplied.

Once installed, TomTom HOME starts automatically when you connect your device to your computer and turn it on.

MyTomTom Account

In order to buy content and services through TomTom HOME you will have to set up a MyTomTom account for the device you want to buy the content for. You will be asked to create an account when you start using TomTom HOME.

19. Addendum

Important Safety Notices and Warnings

Global Positioning System

The Global Positioning System (GPS) is a satellite-based system that provides location and timing information around the globe. GPS is operated and controlled under the sole responsibility of the Government of the United States of America which is responsible for its availability and accuracy. Any changes in GPS availability and accuracy, or in environmental conditions, may impact the operation of your TomTom device. TomTom does not accept any liability for the availability and accuracy of GPS.

Use with Care

Use of a TomTom device for navigation still means that you need to drive with due care and attention.

Aircraft and Hospitals

Use of devices with an antenna is prohibited on most aircraft, in many hospitals and in many other locations. A TomTom device must not be used in these environments.

Battery

This product uses a Lithium-Polymer battery. Do not use it in a humid, wet and/or corrosive environment. Do not put, store or leave your product in or near a heat source, in a high temperature location, in strong direct sunlight, in a microwave oven or in a pressurized container, and do not expose it to temperatures over 60 C (140 F). Failure to follow these guidelines may cause the Lithium-Polymer battery to leak acid, become hot, explode or ignite and cause injury and/or damage. Do not pierce, open or disassemble the battery. If the battery leaks and you come into contact with the leaked fluids, rinse thoroughly with water and seek medical attention immediately. For safety reasons, and to prolong the lifetime of the battery, charging will not occur at low (below 0 C/32 F) or high (over 45 C/113 F) temperatures.

Temperatures: Standard operation: -10 C (14 F) to +55 C (131 F); short period storage: -20 C (-4 F) to + 60 C (140 F); long period storage: -20 C (-4 F) to +25 C (77 F).



THE LITHIUM-POLYMER BATTERY CONTAINED IN THE PRODUCT MUST BE RECYCLED OR DISPOSED OF PROPERLY. USE YOUR TomTom ONLY WITH THE SUPPLIED DC POWER LEAD (CAR CHARGER/BATTERY CABLE) AND AC ADAPTER (HOME CHARGER) FOR BATTERY CHARGING.

To recycle your TomTom unit please see your local approved TomTom service center.

SPECIAL NOTE REGARDING DRIVING IN CALIFORNIA AND MINNESOTA

California Vehicle Code Section 26708 (a) (1) provides that "No persons shall drive any motor vehicle with an object or material placed, displayed, installed, affixed or applied upon the windshield or side or rear windows." Drivers in California should not use a suction mount on their windshield, side or rear windows.

Note: this section of the California Vehicle Code applies to anyone driving in California, not just California residents.

Minnesota State Legislature Statutes Section 169.71, subdivision 1, section 2 provides that "A person shall not drive or operate with any objects suspended between the driver and the windshield other than sun visors and rearview mirrors and electronic toll collection devices."

Note: this Minnesota Statute applies to anyone driving in Minnesota, not just Minnesota residents.

TomTom Inc. bears no responsibility for any fines, penalties or damage that may be incurred by disregarding this notice. While driving in any state with windshield mounting restrictions, TomTom recommends the use of the supplied Adhesive Mounting Disk or its Alternative Mounting Kit, which includes multiple options for mounting TomTom devices on the dashboard and using the air vents. See www.tomtom.com for more information about this mounting option.

FCC Information for the User



This product contains a transmitter which must not be co-located or simultaneously operated in conjunction with any other transmitter.

Exposure to Radio Frequency Radiation

This device complies with FCC radiation exposure limits set forth for an uncontrolled environment. In order to avoid the possibility of exceeding the FCC radio frequency exposure limits, human proximity to the antenna shall not be less than 20cm (8 inches) during normal operation.

Radio and Television Interference

This equipment radiates radio frequency energy and if not used properly - that is, in strict accordance with the instructions in this manual - may cause interference to radio communications and television reception.

This device has been tested and found to comply with the limits for a Class B digital device, pursuant to Part 15 of the FCC Rules. These limits are designed to provide reasonable protection against harmful interference in a residential installation. This equipment generates, uses and can radiate radio frequency energy and, if not installed and used in accordance with the instructions, may cause harmful interference to radio communications. However, there is no guarantee that interference will not occur in a particular installation. If this equipment does cause harmful interference to radio or television reception, which can be determined by turning the equipment off and on, the user is encouraged to try to correct the interference by one or more of the following measures:

- Reorient or relocate the receiving antenna.
- Increase the separation distance between the equipment and the receiver.
- Connect the equipment into an outlet on a circuit different from that to which the receiver is connected.
- Consult an experienced radio/TV technician for help.

Changes or modifications not expressly approved by the party responsible for compliance could void the user's authority to operate the equipment.

Important

This equipment was tested for FCC compliance under conditions that included the use of shielded cables and connectors between it and the peripherals. It is important that you use shielded cable and connectors to reduce the possibility of causing radio and television interference. Shielded cables, suitable for the product range, can be obtained from an authorised dealer. If the user modifies the equipment or its peripherals in any way, and these modifications are not approved by TomTom, the FCC may withdraw the user's right to operate the equipment. For customers in the USA, the following booklet prepared by the Federal Communications Commission may be of help: "How to Identify and Resolve Radio-TV Interference Problems". This booklet is available from the US Government Printing Office, Washington, DC 20402. Stock No 004-000-00345-4.

FCC Declaration of Conformity

Tested to Comply with FCC Standards for Home or Office Use

FCC ID: S4LDUB1
IC ID: 5767A-DUB1

This device complies with part 15 of the FCC Rules. Operation is subject to the following two conditions:

1. This device may not cause harmful interference.
2. This device must accept any interference received, including interference that may cause undesired operation.

Responsible party in North America

TomTom, Inc., 150 Baker Avenue Extension, Concord, MA 01742

Tel: 866 486-6866 option 1 (1-866-4-TomTom)


Emissions information for Canada

This Class B digital apparatus complies with Canadian ICES-003.

Operation is subject to the following two conditions: (1) this device may not cause harmful interference and (2) this device must accept any interference, including interference that may cause undesired operation of the device.

This category II radiocommunication device complies with Industry Canada Standard RSS-310.

CE Marking

 This equipment complies with the requirements for CE marking when used in a residential, commercial, vehicular or light industrial environment.

R&TTE directive

Hereby, TomTom declares that the devices listed above are in compliance with the essential requirements and other relevant provisions of the EU Directive 1999/5/EC.

WEEE directive



This symbol on the product or its packaging indicates that this product shall not be treated as household waste. In line with EU Directive 2002/96/EC for waste electrical and electronic equipment (WEEE), this electrical product must not be disposed of as unsorted

municipal waste. Please dispose of this product by returning it to the point of sale or to your local municipal collection point for recycling.

C-tick



This product displays the C-tick to show it complies with relevant Australian and New Zealand regulations.

This Document

Great care was taken in preparing this manual. Constant product development may mean that some information is not entirely up-to-date. The information in this document is subject to change without notice.

TomTom shall not be liable for technical or editorial errors or omissions contained herein; nor for incidental or consequential damages resulting from the performance or use of this material. This document contains information protected by copyright. No part of this document may be photocopied or reproduced in any form without prior written consent from TomTom International B.V.

20. Copyright notices

© 2008 TomTom International BV, The Netherlands. TomTom™ and the "two hands" logo are among the trademarks, applications or registered trademarks owned by TomTom International B.V. Our limited warranty and end user license agreement for embedded software apply to this product; you can review both at www.tomtom.com/legal

© 2008 TomTom International BV, Niederlande. TomTom™ und das Logo mit den »zwei Händen« gehören zu den Warenzeichen, Anwendungen oder registrierten Markenzeichen von TomTom International B.V. Für dieses Produkt gelten unsere eingeschränkte Garantie und unsere Endnutzerlizenzvereinbarung für integrierte Software, die Sie beide auf www.tomtom.com/legal einsehen und nachlesen können.

© 2008 TomTom International BV, The Netherlands. TomTom™ et le logo TomTom ("deux mains") comptent parmi les marques commerciales, les applications ou les marques déposées de TomTom International B.V. L'utilisation de ce produit est régie par notre garantie limitée et le contrat de licence utilisateur final relatif aux logiciels embarqués ; vous pouvez consulter ces deux documents à l'adresse suivante : www.tomtom.com/legal

© 2008 TomTom International BV, Nederland. TomTom™ en het "twee-handenlogo" maken onderdeel uit van de handelsmerken, applicaties of geregistreerde handelsmerken in eigendom van TomTom International B.V. Op dit product zijn onze beperkte garantie en licentieovereenkomst voor de eindgebruiker van toepassing; beide zijn te vinden op www.tomtom.com/legal

© 2008 TomTom International BV, The Netherlands. TomTom™ e il logo delle "due mani" fanno parte dei marchi, delle applicazioni e dei marchi registrati di proprietà di TomTom International B.V. La nostra garanzia limitata e il contratto di licenza per l'utente finale vengono applicati a questo prodotto, è possibile consultarli entrambi all'indirizzo www.tomtom.com/legal

© 2008 TomTom International BV, Países Bajos. TomTom™ y el logotipo "dos manos" son marcas comerciales, aplicaciones o marcas registradas de TomTom International B.V. Nuestra garantía limitada y nuestro acuerdo de licencia de usuario final para el software integrado son de aplicación para este producto; puede consultar ambos en www.tomtom.com/legal

© 2008 TomTom International BV, Países Baixos. TomTom™ e o logótipo das "duas mãos" fazem parte das marcas comerciais, aplicações ou marcas

comerciais registadas cuja proprietária é a TomTom International B.V. A nossa garantia limitada e contrato de licença de utilizador final relativas ao software incorporado dizem respeito a este produto; pode consultar ambos em www.tomtom.com/legal

© 2008 TomTom International BV, Holland. TomTom™ og logoet med "de to hænder" er blandt de varemærker, produkter og registrerede varemærker, der tilhører TomTom International B.V. Vores begrænsede garanti og slutbrugerlicensaftale for indlejret software gælder for dette produkt; begge dokumenter findes på www.tomtom.com/legal

© 2008 TomTom International BV, Nederländerna. TomTom™ och logotypen "två händer" tillhör de varumärken, programvaror eller registrerade varumärken som ägs av TomTom International B.V. Vår begränsade garanti och vårt slutanvändarlicensavtal för inbyggd programvara kan gälla för denna produkt. Du kan läsa dem båda på www.tomtom.com/legal

2008 TomTom™ ja "two hands" -logo ovat eräitä TomTom International B.V.:n omistamia tavaramerkkejä, sovelluksia tai rekisteröityjä tavaramerkkejä. Rajoitettu takuumme ja loppukäyttäjän käyttösopimuksemme sulautetuille ohjelmistoille koskevat tätä tuotetta; voit tarkastaa molemmat verkkosivuiltamme www.tomtom.com/legal

© 2008 TomTom International BV, Nederland. TomTom™ og "de to hendene"-logoen er blant de varemerker, programvarer og registrerte varemerker som eies av TomTom International B.V. Vår begrensede garanti og lisensavtale med sluttbruker for integrert programvare gjelder dette produktet. Du kan lese om begge på www.tomtom.com/legal

© 2008 TomTom International BV, Holandia. Znak TomTom™ i logo z dwiema dłońmi należy do znaków handlowych, aplikacji lub zastrzeżonych znaków handlowych, których właścicielem jest firma TomTom International B.V. Do niniejszego produktu zastosowanie ma umowa licencyjna dla końcowego użytkownika produktu oraz ograniczona gwarancja na wbudowane oprogramowanie; oba dokumenty można przejrzeć na stronie www.tomtom.com/legal

© 2008 TomTom International BV, Nizozemsko. TomTom™ a logo se dvěma dlaněmi patří mezi obchodní značky, aplikace nebo registrované ochranné známky ve vlastnictví společnosti TomTom International B.V. Na tento produkt se vztahuje omezená záruka a smlouva s koncovým uživatelem pro vestavěný software; do obou dokumentů můžete nahlédnout na www.tomtom.com/legal

© 2008 TomTom International BV, Hollanda. TomTom™ ve "two hands" logoları TomTom International B.V.'ye ait ticari marka, uygulama veya kayıtlı ticari markalardır. Sınırlı garantimiz ve katıştırılmış yazılımın son kullanıcı lisans sözleşmesi bu ürün içindir; www.tomtom.com/legal adresinden ikisine de göz atabilirsiniz

© 2008 TomTom International BV, Hollandia. A TomTom™ és a "két kéz" embléma is a TomTom International B.V. által birtokolt védjegyek,

alkalmazások és bejegyzett védjegyek közé tartozik. A korlátozott garancia és a benne foglalt szoftver végfelhasználói licencszerződése érvényes erre a termékre; melyeket a következő helyen tekinthet át: www.tomtom.com/legal

© 2008 TomTom International BV, Holland. TomTom™ ja "kahe kää" logo kuuluvad nende kaubamärkide, rakenduste või registreeritud kaubamärkide hulka, mille omanikuks on TomTom International B.V. Sellele tootele kehtib meie piiratud garantii ja lõppkasutaja litsentsileping manustarkvara jaoks; saad tutvuda mõlemaga aadressil www.tomtom.com/legal

© 2008 TomTom International BV, Nīderlande. TomTom™ un "divu roku" logotips ir vienas no preču zīmēm, lietojumiem vai reģistrētām preču zīmēm, kas pieder uzņēmumam TomTom International B.V. Šim produktam ir piemērojama mūsu uzņēmuma ierobežotā garantija un iegultās programmatūras gala lietotāja licences līgums, ar kuriem var iepazīties www.tomtom.com/legal

© 2008 TomTom International BV, Nyderlandai. TomTom™ ir divieju ranku logotipas yra TomTom International B.V. vienas iš prekių ženklų, programų arba registruotųjų prekių ženklų. Mūsų ribota garantija ir galutinio naudotojo sutartis naudotis įdėtąja programine įranga taikoma šiam produktui; galite peržiūrėti abu dokumentus svetainėje www.tomtom.com/legal

© 2008 TomTom International BV, Países Baixos. TomTom™ i el logotip amb les "dues mans" formen part de les marques comercials, aplicacions o marques comercials registrades propietat de TomTom International B.V. La nostra garantia limitada i l'acord de llicència per a usuaris finals per al programari inclòs són aplicables a aquest producte. Podeu consultar ambdós documents a www.tomtom.com/legal

© 2008 TomTom International BV, Holandsko. TomTom™ a logo s "dvoma rukami" patria medzi ochranné známky, aplikácie alebo registrované ochranné známky vlastnené spoločnosťou TomTom International B.V. Na tento produkt sa vzťahuje obmedzená záruka a dohoda s koncovým užívateľom pre vstavaný softvér; viac informácií o oboch nájdete na www.tomtom.com/legal

© 2008 TomTom International BV, Holanda. TomTom™ e o logotipo de "duas mãos" estão entre as marcas comerciais, aplicativos ou marcas registradas possuídas pela TomTom International B.V. Nossa garantia limitada e acordo de licenciamento do usuário final para o software incluído se aplicam para este produto; ambos podem ser vistos em www.tomtom.com/legal

Data Source

© 2008 Tele Atlas N.V. Based upon:

Topografische ondergrond Copyright © dienst voor het kadaster en de openbare registers, Apeldoorn 2008.

© Ordnance Survey of Northern Ireland.

© IGN France.

© Swisstopo.

© BEV, GZ 1368/2008.

© Geonext/DeAgostini.

© Norwegian Mapping Authority, Public Roads Administration /

© Mapsolutions. © DAV.

This product includes mapping data licensed from Ordnance Survey with the permission of the Controller of Her Majesty's Stationery Office. © Crown copyright and/or database right 2008. All rights reserved. Licence number 100026920.

Data Source

© 1984 – 2008 Tele Atlas North America. Inc. All rights reserved.

Canadian Data © DMTI Spatial. Portions of Canadian map data are reproduced under license from Her Majesty the Queen in Right of Canada with permission from Natural Resource Canada. Point of Interest data by Info USA. Copyright 2008.

Data Source

Whereis® map data is © 2008 Telstra® Corporation Limited and its licensors, Whereis® is a registered trademark of Telstra® Corporation Limited, used under license.

Some images are taken from NASA's Earth Observatory.

The purpose of NASA's Earth Observatory is to provide a freely-accessible publication on the Internet where the public can obtain new satellite imagery and scientific information about our home planet.

*The focus is on Earth's climate and environmental change:
earthobservatory.nasa.gov/*

Apple® and iPod® are trademarks of Apple Computer, Inc., registered in the U.S. and other countries.

MPEG Layer-3 audio coding technology licensed from Fraunhofer IIS and Thomson.

Supply of this product does not convey a license nor imply any right to distribute content created with this product in revenue-generating broadcast systems (terrestrial, satellite, cable and/or other distribution channels), streaming applications (via Internet, intranets and/or other networks), other content distribution systems (pay-audio or audio-on-demand applications and the like) or on physical media (compact discs, digital versatile discs, semiconductor chips, hard drives, memory cards and the like). An independent license for such use is required. For details, please visit mp3licensing.com

Free Manuals Download Website

<http://myh66.com>

<http://usermanuals.us>

<http://www.somanuals.com>

<http://www.4manuals.cc>

<http://www.manual-lib.com>

<http://www.404manual.com>

<http://www.luxmanual.com>

<http://aubethermostatmanual.com>

Golf course search by state

<http://golfingnear.com>

Email search by domain

<http://emailbydomain.com>

Auto manuals search

<http://auto.somanuals.com>

TV manuals search

<http://tv.somanuals.com>