

1 Introduction

Thanks for buying this National Geographic™ digital photo frame which can show all your digital JPEG photos, play your music files and show your videos.

Read and follow the instructions in this manual before starting to use your digital photo frame. You will find all information you need.

2 Features

2.1 Photo album

- Copy your photos onto your memory card. Plug it into your digital photo frame and display your photos in JPEG format on the high quality 8" TFT LCD Panel.
- Display JPEG files up to 12 Mega pixel.
- Digital photos in the memory cards, USB stick or Built in memory will be directly displayed.
- Rotate photos 360 degrees and zoom in.
- Transfer photos from your computer to digital photo frame with a USB cable.
- Listen to music files during the photo slide show.
- Send photos from your mobile phone using Bluetooth and display them directly on the screen.

2.2 Music album

- Listen to music files stored in the internal memory, on a memory card or USB stick on the build in speakers.
- Control the sound with the enclosed remote control.

2.3 Video album

- Display MPG videos stored in the internal memory, on a memory card or USB stick.
- Controlled the video and audio with the enclosed remote control.

3 Safety precaution and maintenance

- Read and follow these instructions before using your digital photo frame.
- Keep this user manual for future reference.
- This product is not a toy, it contains fragile and swallowable glass parts and small parts. Do not permit children to play with it.
- The product is intended for private use only.
- The LCD panel of digital photo frame is made of glass and fragile, so it is sensitive to abnormal force. Please do not put excessive pressure on the LCD Panel. Please be careful while cleaning, handling and keep it away from sharp edges.
- Unplug your digital photo frame if you are not going to use it for an extensive period of time.
- Your digital photo frame is a complicated electronic device and can be damaged from being dropped.
- Keep your digital photo frame dry. Exposing to liquid or moisture will damage your digital photo frame. To avoid the risk of electric shock, do not expose it to rain or excessive moisture.
- Use only dry and soft cloth for cleaning LCD panel.
- Be sure that your photo frame is shut down when plugging in and out a memory card.
- Keep your digital photo frame out of direct sunlight, stoves or any other heat source.
- The back cabinet of your digital photo frame should only be opened by authorized service technicians. Never open it by yourself.
- Be sure the stand of your digital photo frame is clear from cables to avoid that your digital photo frame is pulled to the floor.
- Dangerous voltages are present inside the unit. Never open the housing or insert objects through the ventilation holes.

4 Gift box content

- Digital Photo Frame
- AC-DC Adaptor
- Frame Stand
- Quick User Guide
- Warranty Card
- Mini USB (male) to regular USB (female) convertor cable
- USB cable
- Support & Content CD (National Geographic Licensed Photos & Full User Manuals)

5 Copyrights

You will find 20 National Geographic licensed photo on the enclosed CD.

Photographs are the sole property of the National Geographic Society and may not be reprinted, copied or sold without the express written permission of the National Geographic Society.



Photograph by JAMES L. STANFIELD / National Geographic Society
Mute swans (Cygnus olor) gather in the grassy marshes of Nantucket Sound, Massachusetts, U.S.A.



Photograph by GEORGE F. MOBLEY/ National Geographic Society
A dandelion bursts through early spring snow cover to bask in sunlight near Appenzell, Switzerland.



Photograph by GEORGE F. MOBLEY / National Geographic Society
High in the Andes Mountains, sunlight illuminates the peaks of the Cordillera de Paine range in Chile.



Photograph by PAUL ZAHL/ National Geographic Society
A goldfish (Carassius auratus) sporting bulging eye sockets swims by — a surreal reminder of nature's diversity.



Photograph by JAMES L. STANFIELD / National Geographic Society
A plains zebra (Equus burchelli) keeps close watch over her young foal in Hwange National Park, Zimbabwe.



Photograph by MICHAEL NICHOLS / National Geographic Society
A humpback whale (Megaptera novaeangliae) crashes back into the water after breaching off the coast of Gabon's Loango National Park.



Photograph by CHRIS JOHNS / National Geographic Society
On a wild plain in Africa, a strikingly beautiful cheetah (Acinonyx jubatus) gazes intently beyond the frame of a photographer's scope.



Photograph by JAMES L. STANFIELD / National Geographic Society
A ghost crab (Ocypode) in a defensive posture reacts to an intruder's approach along a beach on Samana Cay, Bahamas.



Photograph by JAMES L. STANFIELD / National Geographic Society
The Monumental Arch and Great Colonnade in Palmyra, Syria, stand silent testament to the ancient cultures that once thrived here.



Photograph by JOHN SCOFIELD / National Geographic Society
Awash in hues of green and blue, a normally brooding Venice shines brightly in the midday sun.



Photograph by W.E. GARRETT / National Geographic Society
Awash in beams of golden sunlight, a waterfall from Havasu Creek falls over and down red rock forming part of the southern rim of the Grand Canyon on Havasupai Indian Reservation in Arizona, U.S.A.



Photograph by MICHAEL NICHOLS / National Geographic Society
Giant panda cub (Ailuropoda melanoleuca) Tai Shan plays with his mother, Mei Xiang. Tai Shan was born in captivity at the National Zoo in Washington, D.C., U.S.A., in July 2005.



Photograph by JAMES P. BLAIR / National Geographic Society
Time stands still along the shoreline of Walker Cove in Alaska's Tongass National Forest. Subsidised logging is destroying much of the old-growth rain forest found in this prized American woodland region.



Photograph by RAYMOND GEHMAN / National Geographic Society
Fallen aspen leaves lay scattered across fresh snowfall near Moraine Lake in Canada's Banff National Park.



Photograph by MICHAEL NICHOLS / National Geographic Society
A beautiful wild orchid stretches like a yoga master. This specimen was photographed in Gabon.



Photograph by JODI COBB/ National Geographic Society
Viewed from the Bund, the city of Shanghai's rapid modernization is rapidly illustrated. The city has long been China's cultural capital, but thanks to recent financial success, it is now experiencing whirlwind growth.



Photograph by JAMES P. BLAIR / National Geographic Society
First a seat of power for the Byzantine Empire and then converted to an imperial mosque by a conquering sultan, the glorious, centuries-old Hagia Sophia is now a museum and World Heritage site in Istanbul, Turkey .



Photograph by MICHAEL NICHOLS / National Geographic Society
Two young male forest elephants (Loxodonta cyclotis) kick up muddy water as they spar. These animals struggle to survive a constant onslaught from poachers even within the protected confines of Gabon's Ivindo National Park.



Photograph by GEORGE F. MOBLEY / National Geographic Society
A solitary cancer paddles across the glassy surface of Lake Schrader in Alaska's Arctic National Wildlife Refuge, an area under constant threat of habitat degradation from oil developers and other industries wanting a piece of its rich natural resources.

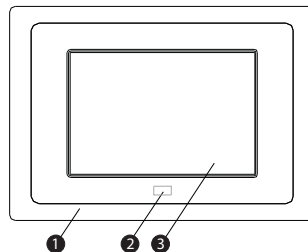


Photograph by DEAN CONGER / National Geographic Society
Iconic buildings shrouded in shadowic line Red Square in Moscow under a still, night sky. The square is rich with Russian history, paying homage to the many empires that rose and fell within its unblinking gaze.

6 Description

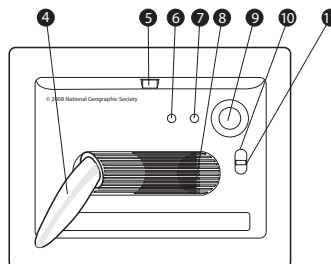
6.1 Front panel

1. Removable frame
2. Remote control receiver
3. LCD - display



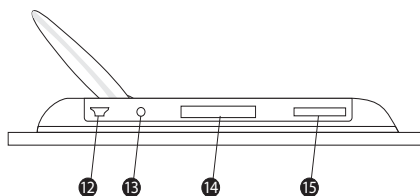
6.2 Back side

4. Stand
5. Removable frame lock
6. Escape button
7. Enter button
8. Speaker
9. Navigation button
10. Power indicator LED
11. Power Switch



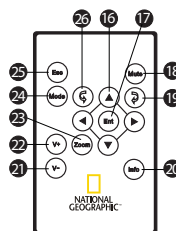
6.3 Bottom

12. Mini USB - port
13. DC power jack (+5V DC)
14. CF card slot
15. SD/MMC/MS PRO - card slot



6.4 Remote control

16. Navigation buttons
17. Enter
18. Mute
19. Rotate picture clockwise
20. Info
21. Volume down
22. Volume up
23. Zoom button
24. Mode button
25. Escape
26. Rotate picture counter clockwise



7 Installation

7.1 Desktop placement

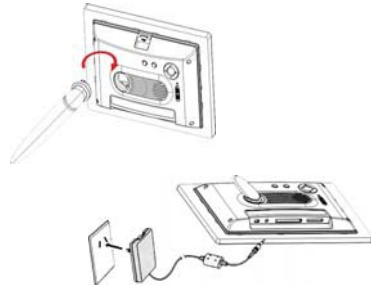
Install the enclosed stand **4** at the back of the digital photo frame (horizontal or vertical).

7.2 Power adapter connector

Only use the power adapter supplied (DC +5 V, 1,8 A). Do not use other adapters, as this may damage the device.

The wall outlet for the power supply must be close and easy accessible.

- Connect the small plug of the AC adaptor to the photo frame adapter Jack **15** and the other end of the adapter cable to the electric socket (230V/50Hz).



8 Plugging in memory card

Your digital photo frame can work with these memory cards:

- Memory slot **14**
 - Secure Digital (SD-TM)
 - Multi Media (MMC-TM)
 - Memory Stick™ & Memory Stick Pro™
- Memory slot **15**
 - Compact Flash (CF)
- Memory slot **12**
 - USB Flash Memory





Insert the memory card into the relevant slot on the digital photo frame. Be sure that the memory card is in the right direction.

To connect a USB Flash Memory stick, first connect the Mini USB (male) to regular USB (female) convertor cable into the Mini USB - port.

9 Menu navigation

At the backside of the unit, as well as on the remote control, you will find the 'Enter' **7** / **17**, 'Esc' button **6** / **25** (Escape) and the navigation buttons (arrows) **9** / **16**. The function on both remote and unit are the same.

- Press 'Enter' **7** / **17** to confirm a selected item or enter a sub menu.
- Press 'ESC' **6** / **25** to leave a menu or setting.
- The next navigation buttons **9** / **16** can be used to navigate through the menu: ▲ **16**

Up button 	<ul style="list-style-type: none"> • Move the cursor up in the menu. • Open brightness adjustment menu at playing mode. • Switch picture control bar and music control bar (After use button "ENTER" open the control bar in Image mode). • Shift up when zooming in a picture. • Page up at the first line of the 9-pictures thumbnail.
Down button 	<ul style="list-style-type: none"> • Move the cursor down in the menu. • Open volume adjustment menu at playing interface. • Switch picture control bar and music control bar (After "ENTER" button open control bar). • Shift down when zooming in a picture. • Page down at the last line of the 9-pictures thumbnail.
Left button 	<ul style="list-style-type: none"> • Move the cursor left at the menu. • Back to the previous folder in file list. • Jump to the previous file at playing interface. • Shift left when zooming in a picture (only when the control bar is closed). • Page up at the first picture of 9-picture thumbnail.
Right button 	<ul style="list-style-type: none"> • Move right the cursor at the menu. • Open the selected folder in file list. • Active the copy/delete function for selected files. • Jump to the next file at playing interface. • Shift right when zooming in a picture (only when the control bar is closed). • Page down at the last picture of 9-picture thumbnail.

10 Getting started (Preset mode)

After connecting the AC/DC adaptor:

- Set the Power Switch ⑪ to 'ON', to turn the power on. When there is no memory card installed, the clock and the calendar mode is displayed.
- Set the Power Switch ⑪ to '⚡', to activate the frame lighting.
- Press 'Enter' ⑰ to enter 'Card select' mode.
- Install, if necessary, a memory card (see '8 Plugging in memory card').
- Select the memory card by using the navigation buttons and press 'Enter' ⑰ to enter the 'Function select' mode.

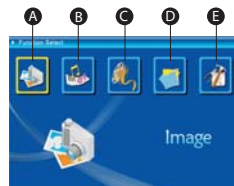
The startup mode can be changed (see '11.6 Settings'). If you change the startup mode, the system will search files for the new setting. If the system can not find the files, 'card select' mode will appear on the screen.



11 Functions

11.1 'Function select mode' display

- A. Image mode
- B. Music mode
- C. Video mode
- D. File mode
- E. Setup mode



11.2 Displaying photos

The photos can be displayed from the internal memory, a memory card or a USB Flash Memory.



Only pictures in JPEG format can be displayed in your digital photo frame.

When 'Function select mode' is displayed:

- Press 'Enter' ⑰ when the cursor is on the 'Image' icon to display the thumbnail mode of the photos in your memory card.
- Use navigation buttons ⑰ on the remote control to select the photo you want to display.
- Press 'Enter' ⑰ to see the picture in full size. The slide show will start automatically.
- Press ◀ ⑰ of the navigation buttons to display the previous photo.
- Press ▶ ⑰ to display the next photo.
- Press the rotate button ⑲ or ⑳ to rotate the picture clock or counter clockwise.
- Press the zoom button ㉓ to zoom in. During zoom, press the navigation keys ⑰ to shift the picture.



11.2.1 Brightness

- Press ▲ ⑰ to activate the brightness bar.
- Press ◀ ⑰ or ▶ ⑰ to change the brightness.
- Press 'ESC' ㉓ to remove the brightness bar.



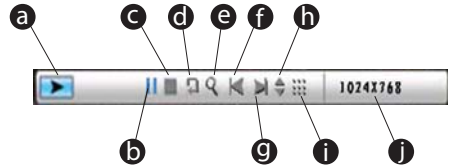
11.2.2 Volume

- Press ▼ ⑰ of the navigation buttons to activate the volume bar.
- Press ◀ ⑰ or ▶ ⑰ to change the volume.
- Press 'ESC' ㉓ to remove the volume bar.



11.2.3 Control bar

- Press 'Enter' **17** to display the control bar.
- Use navigation buttons **16** on the remote control to select one of the icons.
 - a. Status
 - b. Play/Pause
 - c. Stop
 - d. Rotate picture 90°
 - e. Zoom
 - f. Previous picture
 - g. Next picture
 - h. Show file info
 - i. View thumbnails 3 x 3
 - j. Picture resolution



- Press 'Enter' **17** to activate the function.
- Press 'ESC' **25** to remove the control bar.

If no button is pressed, the control bar will automatically disappear in 10 seconds.

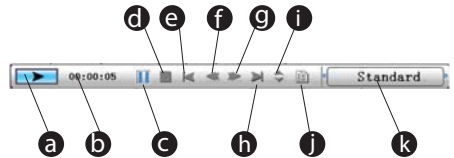
11.3 Listening to music

When 'Function select mode' is displayed:

- Press 'Enter' **17** when the cursor is on the 'Music' icon. The first song will play automatically.
- Press the volume up button **22** to increase the volume.
- Press the volume down button **21** to decrease the volume.
- Press 'Enter' **17** to display the control bar.
- Use navigation buttons **16** on the remote control to select one of the icons.



- a. Status
- b. Play time
- c. Play/Pause
- d. Stop
- e. Previous song
- f. Fast backward
- g. Fast forward
- h. Next song
- i. Show file info
- j. ID3 Tag
- k. Play mode



- Press 'Enter' **17** to activate the function.
- Press 'ESC' **25** to remove the control bar.

If no button is pressed, the control bar will automatically disappear in 10 seconds.

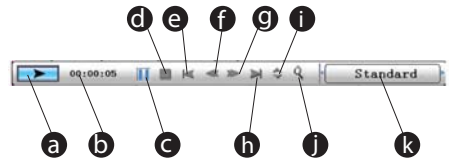
11.4 Watching video

When 'Function select mode' is displayed:

- Press 'Enter' **17** when the cursor is on the 'Video' icon. The first video will play automatically.
- Press the volume up button **22** to increase the volume.
- Press the volume down button **21** to decrease the volume.
- Press 'Enter' **17** to display the control bar. Use navigation buttons **16** on the remote control to select one of the icons.



- a. Status
- b. Play time
- c. Play/Pause
- d. Stop
- e. Previous video
- f. Fast backward
- g. Fast forward
- h. Next video
- i. Show file info
- j. Zoom
- k. Play mode




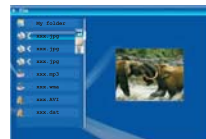
- Press 'Enter' **17** to activate the function.
- Press 'ESC' **25** to remove the control bar.

If no button is pressed, the control bar will automatically disappear in 10 seconds.


11.5 File manager

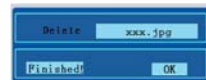
When 'Function select mode' is displayed:

- Press 'Enter' **17** when the cursor is on the 'FILE' icon.
- Use navigation buttons **16** to move through the directories:
 - ▲ / ▼ **16** to scroll through the directory
 - ► **16** to enter the directory
 - ◀ **16** to exit the directory
- Select the target file and press ► **16**. A sign  will appear on the left of the selected file's name.
- To unselect the file press ► **16** again. You can select more than one file with the previous step.
- Press the info button **19** to open the action menu.



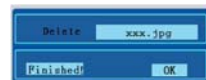
To delete the selected files:

- Press ▼ **16** to select the 'Trash' icon. 
- Press 'Enter' **17** to confirm.
- To turn back to the file menu, press 'Enter' **17** again.
- Exit the current folder by pressing ◀ **16** or 'ESC' **25**



To copy the selected files when the action menu is displayed:

- Exit the current folder by pressing ◀ **16** or 'ESC' **25** and enter to the target folder.
- Press 'Info' **19** and move the cursor on to the 'Copy' icon by ▼ **16**.
- Press 'Enter' **17** to copy the selected files to the target folder.
- Press 'Enter' **17** again to turn back to the file menu.



11.6 Settings

- Select the 'Setup' icon by using the navigation buttons **16** in the 'Function select mode'.
- Press 'Enter' **17**, the setup menu is displayed.

Select one of the next settings by using the navigation buttons and press 'Enter' **17**:



1. Language Setting
 - Select the desired language (English, German, French, Italian, Spanish, Dutch, Portuguese and Turkish) and press 'Enter' **17**.



2. Picture Setting.
 - Use navigation buttons to select 'Slideshow Model' or 'Picture Play Mode' and press 'Enter' **17**.
 - Select one of the settings and press 'Enter' **17** to confirm.



3. Clock setting
 - Use ◀ **16** or ► **16** to move the cursor on date and clock.
 - Use ▲ and ▼ **16** to change the date and the clock.



4. Alarm setting
 - Move the cursor with ◀ or ► **16** to select the item to be set (hour/date/number of rings and mode).
 - Change the settings with ▲ and ▼ **16**. There are three rings. The mode can be set as OFF/once/day.



5. Start up mode
 - Use ▲ and ▼ **16** to select the start up mode (Calendar/ Picture/Music/Movie/Picture+Music).



6. Video Setting:
 - Use ▲ and ▼ **16** to select Brightness, Contrast or Saturation.
 - Use ◀ **16** or ▶ **16** to change the value (0 to 16).



7. Bluetooth Setting:
 - Press 'Enter' **17** to open the bluetooth setting menu.
 - Use ▲ and ▼ **16** to select 'ON' or 'OFF'



8. Default Setting:
 - Press 'Enter' **17** to reset the digital photo frame to the factory setup.



9. Version
 - Press 'Enter' **17** to see the software version.

12 PC connection

The digital photo frame can be connected to a computer to act as a card reader for file transfer from your computer's hard drive to the internal memory, the installed memory cards or USB stick.

12.1 Windows® Vista™/XP/XP Pro/2000 SP3 users

No drivers are needed for Windows Vista, XP, XP Pro, Windows 2000 SP3. Your computer will recognize the digital photo frame upon connection of the USB cable.

12.2 USB connection to computer

To connect the digital photo frame to your computer, you will need a standard USB cable, Type A Male to Type Mini B 5-pin Male (The USB cable is not included).

- Set the Power Switch **11** to 'ON', to turn the power on.
- Press 'Enter' **17** to enter 'card select' mode.
- Connect the small end of the USB cable to the mini USB port **12** on the bottom of the digital photo frame.
- Connect the larger end of the USB cable to a USB port on your computer.
- The digital photo frame will display 'Connecting PC'.
- Five drive letters entitled 'Removable Disc' will appear under the 'My Computer' icon in Windows; one for each of the memory card slots and internal memory on the digital photo frame 'Nand'.
- For files transfer, double-click the appropriate 'Removable Disc' icon to access for files copy and delete amongst your computer, digital photo frame internal memory and all installed memory cards.

12.3 Disconnect the digital photo frame from your computer

- In the Windows task bar, right click the icon "Safely Remove Hardware".
- The 'Safely Remove Hardware' dialogue box will appear. Select "USB Mass Storage Device" and click 'STOP'.
- On the next dialogue box, click 'OK' to remove the storage device.
- On the final dialogue box, select 'CLOSE' and disconnect the USB cable from your computer.
- The digital frame must be re-started.

13 Bluetooth communication

Files can be transferred from other built in Bluetooth devices such as mobile phones, PDA, PC etc. to NG8060.

The built-in Bluetooth module works at the mode 'OPP (Object Pull Profile)', so NG8060 just can receive files by Bluetooth.

- Set the Power Switch **11** to 'ON', to turn the power on.
- Press 'Enter' **17** to enter 'card select' mode.
- If the icon of Bluetooth is highlight, it shows the module is active. If the icon is white, go to the settings menu and under Bluetooth settings make it 'ON'.
- Turn on your Bluetooth function of your device (mobile phone, PDA, PC etc.) and start searching.
- The Bluetooth name of your photo frame is 'NG8060', after finding it, pair the devices (it will ask a password, pls input "0000").
- When the devices are paired, the files can be transmitted.
- After the transfer is finished, the picture is saved in the memory which was selected in the card select menu (if it is Nand Flash, it will be saved in that internal memory) and displayed on the screen automatically.
- During transmission, the rate will be shown on the screen. If you would like to cancel it, press 'Enter' **17**.

The maximum distance of the Bluetooth communication is 10m.

The name of files for transmitting must be Turkish, English, French, German, Italian, Spanish, Dutch or Portuguese. A number, including some other characters will be transmitted.

When the transmission has failed, restart the product to use the Bluetooth again.

If the memory card is full or could not receive files, please match the two equipments over again.



14 Technical specifications

Screen

- Screen Size 8 inch
- Screen Display Size 158 X 99 mm
- Resolution 800 X 480
- Dot gap Horizontal 0,107 mm; vertical 0,37 mm
- Brightness 300 cd/m2
- Screen Mode: 16:9
- Life cycle of the LCD screen 20.000 hours
- Display language English/Turkish/German/French/Spanish/Italian/Dutch/Portugues

Photo

- Photo File Format: JPEG
- Maximum Photo Size 12 Mega pixel
- Slide Show Interval Fast / Normal / Slow
- Photo Edit Copy, Delete, Rotate, Pause, Zoom
- Settings Brightness, contrast, saturation

Connections

- Memory Card Slot SD/MMC/MS
- USB Connection 1
- Build in memory 128 MB
- Built in Bluetooth Yes

Music

- Music File Format : MP3 / WMA
- Background Music During Slide Show Yes
- Built in Speaker : Yes

Video

- Video formats Mpeg1 / Mpeg2 / Mpeg4 / Mjpeg

Others

- Dimensions 246 x 178 x 85 mm.(With frame stand)
- Weight 0.680 kg
- Power Consumption 7,5 W
- Operating Temperature 0 °C ~ 40 °C
- Storage Temperature -20 °C ~ 60 °C

15 Cleaning the device

To clean the device, wipe with a soft cloth dampened with water. To clean dirty joints, use a non-scratching brush. Don't use a cleaner or solvents on the unit. They can damage the case and leak inside, causing permanent damage.

16 Disposal of the device (environment)



At the end of the product lifecycle, you should not throw this product into the normal household garbage but bring the product to a collection point for the recycling of electrical and electronic equipments. The symbol on the product, user guide and/or box indicate this.

Some of the product materials can be re-used if you bring them to a recycling point. By re-using some parts or raw materials from used products you make an important contribution to the protection of the environment. Please contact your local authorities in case you need more information on the collection points in your area.

17 Warranty

17.1 Warranty period

The devices have a 24-month warranty period. The warranty period starts on the day the new unit is purchased. Consumables or defects causing a negligible effect on operation or value of the equipment are not covered. The warranty has to be proven by presentation of the original or copy of the purchase receipt, on which the date of purchase and the unit-model are indicated.

17.2 Warranty handling

A faulty unit needs to be returned to an authorized service centre including a valid purchase note and a filled in service card.

If the unit develops a fault during the warranty period, the service centre will repair any defects caused by material or manufacturing faults free of charge, by either repairing or exchanging the faulty units or parts of the faulty units. In case of replacement, colour and model can be different from the original purchased unit.

The initial purchase date shall determine the start of the warranty period. The warranty period is not extended if the unit is exchanged or repaired by the service centre.

17.3 Warranty exclusions

Damage or defects caused by incorrect treatment or operation and damage resulting from use of non-original parts or accessories are not covered by the warranty.

The warranty does not cover damage caused by outside factors, such as lightning, water and fire, nor any damage caused during transportation.

No warranty can be claimed if the serial number on the units has been changed, removed or rendered illegible.

Any warranty claims will be invalid if the unit has been repaired, altered or modified by the buyer.

17.4 TFT-LCD defect policy

Despite the highest possible standards, the intricate manufacturing of thin-film transistor (TFT) liquid crystal display (LCD) screens may still produce slight visual imperfections. However, there will be provided a warranty service for your NG8060's TFT LCD screen if there are :

- 3 bright dots or 5 dark dots or 8 bright and/or dark dots in total; or
- 2 adjacent bright dots or 2 adjacent dark dots; or
- 3 bright and/or dark dots inside an area of 15mm diameter

These TFT LCD screen warranty conditions are offered by the TFT LCD manufacturers. Therefore, at its option, the product will be repaired or replaced. .



A bright dot is a white or sub-pixel that is always on. A dark dot is a black or sub-pixel that is always off.



This product is in compliance with the essential requirements and other relevant provisions of the directive 2004/108/EC.

Free Manuals Download Website

<http://myh66.com>

<http://usermanuals.us>

<http://www.somanuals.com>

<http://www.4manuals.cc>

<http://www.manual-lib.com>

<http://www.404manual.com>

<http://www.luxmanual.com>

<http://aubethermostatmanual.com>

Golf course search by state

<http://golfingnear.com>

Email search by domain

<http://emailbydomain.com>

Auto manuals search

<http://auto.somanuals.com>

TV manuals search

<http://tv.somanuals.com>