



Toshiba IK-WB11 Camera Installation & Configuration Guide

WebCCTV

Let's make things SAFER!

Contents

| | | |
|----------|--|----------|
| 1 | PREREQUISITES | 3 |
| 2 | CAMERA CONFIGURATION | 4 |
| 2.1 | SEARCHING AND ENTERING THE CAMERA..... | 4 |
| 2.2 | NETWORK SETTINGS CONFIGURING..... | 6 |
| 2.3 | ADMINISTRATOR CREDENTIALS CONFIGURING..... | 7 |
| 3 | ADVANCED CAMERA CONFIGURATION | 8 |

This guide explains how to install and configure the Toshiba IK-WB11 camera in the local network.



It is strongly recommended that you add only one camera at a time to the network for configuration.

1 Prerequisites

Before the configuration begins, check the following:

- The camera is unpacked and correctly connected to the power source and network. If using a Wired LAN connection, confirm that the network LAN is plugged in.



If using a wired network, make sure to plug in the network cable to the camera *before* powering the camera on. If the network cable is not connected during start-up, the camera will automatically switch to wireless mode.

- WebCCTV NVR is installed, activated, running and properly connected to the network (see Installation manual).
- You have an exact list of IP addresses and passwords for WebCCTV NVR and the network cameras.
- The IP address of WebCCTV NVR is properly configured (see Installation manual).
- Monitor, keyboard and mouse are connected to WebCCTV NVR (see Installation manual).
- If Java 2 Runtime Environment SE Ver.1.4.2 is not installed, this product may not output images or sound properly. Access the following website to download “Java 2 Runtime Environment SE” <http://java.com>
- The IP address of the camera and the IP address of the computer you will use for the network camera configuration are in the same range. The default camera network settings are as follows:
IP address: 198.162.0.30, Subnet mask: 255.255.255.0
If your computer address is not in the range 198.162.0.n please change it appropriately.



Make sure that IP address of the camera and the IP address of the computer you will use for the network camera configuration are in the same range. After the configuration is complete, make sure that the IP address of WebCCTV/GuardNVR server and the IP address of the camera are in the same range.

2 Camera configuration

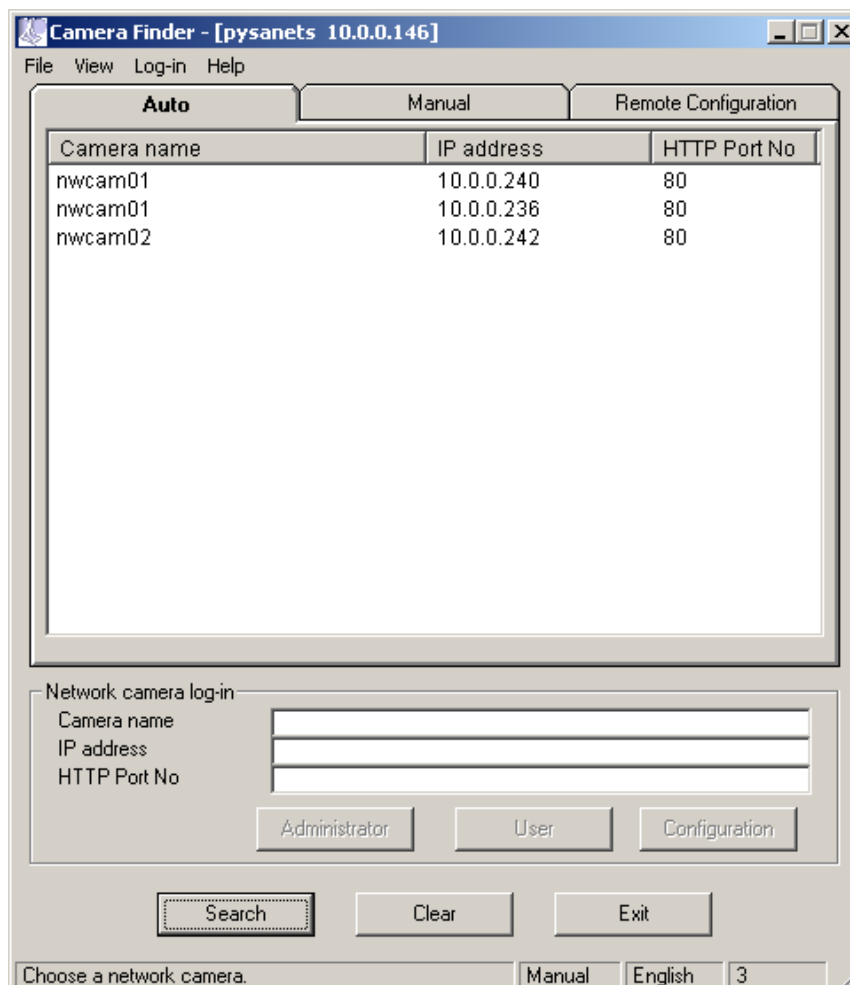
To begin the configuration of the camera you should use the **Camera Finder** application. **Camera Finder** is an application for searching network cameras. You can use it by downloading it from the Toshiba website on the following link:

http://www.toshiba.com/taisid/security/support/support_downloads.jsp

2.1 Searching and entering the camera.

To configure a camera follow the steps below:

1. Download **Camera Finder** using the link above. Open the **Setup** file and follow the onscreen instructions to install the **Camera Finder** application.
2. After the installation is complete, go to **Start->Program->TOSHIBA Network Camera** item.



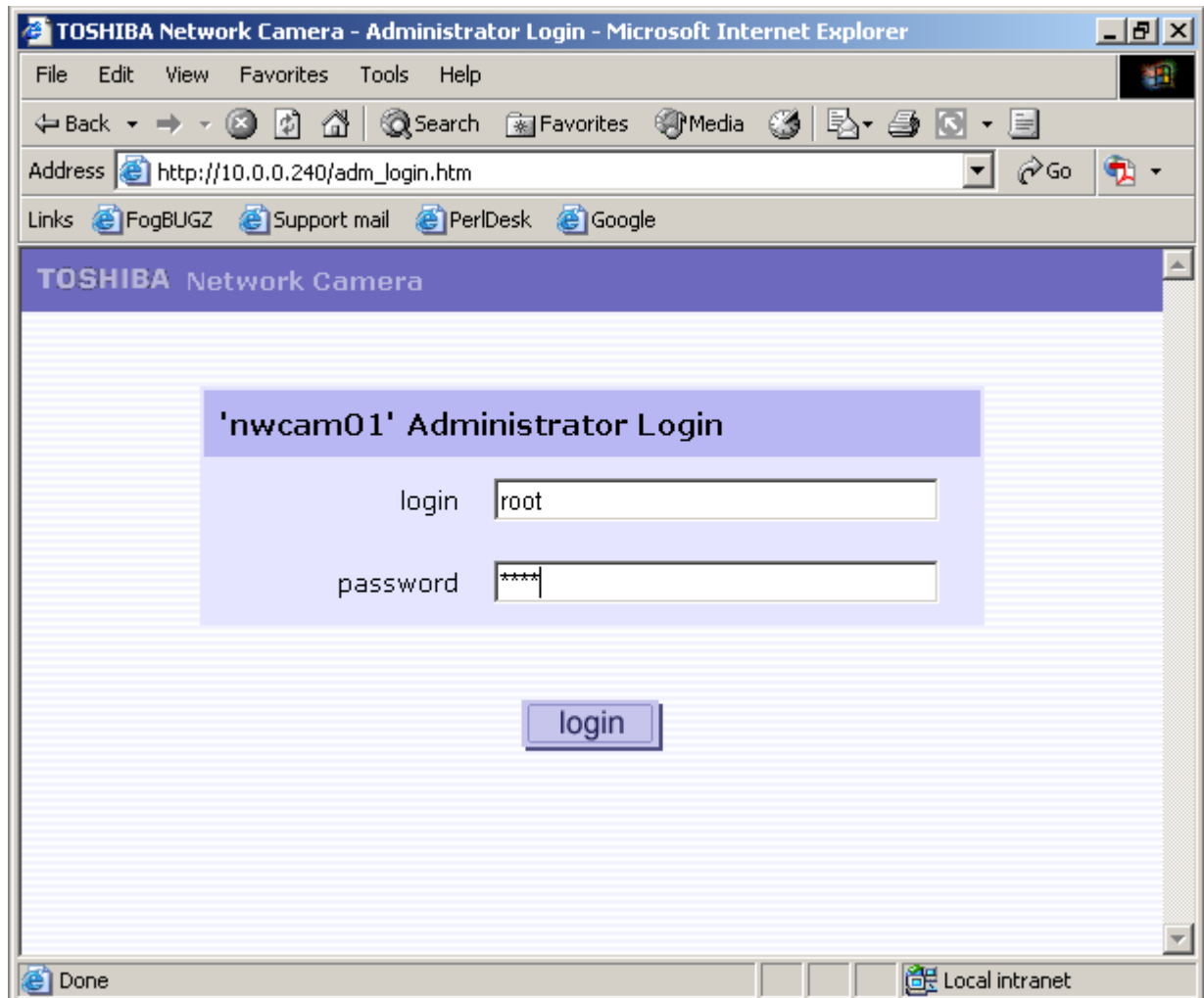
Camera Finder Screen

3. On this screen click **Search** button. All cameras, which are currently connected to the network, appear.



Make sure that the IP addresses of a camera and computer, which you launched Camera Finder from, are in the same range.

4. Choose the camera you want to login to from the list and click **Administrator** button to login as administrator.



Camera Administrator Login Screen

5. In the browser screen that appeared specify **default administrator credentials** as follows: Login ID: **root**, Password: **ikwb**.
6. Click **Login** button.

2.2 Network settings configuring

TOSHIBA Network Camera

nwcam01 LIVE

Admin Menu exit

Camera Settings

Network Settings

- General
- Wireless LAN
- Mail
- Routing Table
- ARP Table
- DDNS
- FTP Recording

Security Settings

Multi-Screen Display Settings

Administrator Functions

Log Management

Network - Connection Settings

General Settings

Camera Name: nwcam01 (It means not a network host name.)

Auto Identification of Other Camera: ON (other cameras in network identified automatically) OFF

DHCP: ON (IP address data acquired automatically) OFF (IP address information set manually)

The following settings are valid when "DHCP" is set to "OFF":

IP Address: 10 . 0 . 0 . 240

Subnet Mask: 255 . 255 . 255 . 0

Default Gateway: 10 . 0 . 0 . 201

DNS Settings

Primary DNS Server IP address:

Secondary DNS Server IP address:

HTTP Port Setting

HTTP Port Number: 80 (Number from 1 to 65535 except under use.)

Camera ID

The camera ID is a uniform ID assigned to individual camera and cannot be changed.

Camera ID: 094124

reset save

Camera Network Settings Screen

- After you have logged in go to **Network Settings->General** and enter there the following settings:
 - Specify **Camera Name**
 - Switch **Auto Identification of Other Camera** to **OFF**
 - Switch **DHCP** to **OFF**.
 - Specify **IP address** and **Subnet Mask**
 - Specify **Default Gateway** IP address
 - HTTP Port Number** leave as default - **80**



Contact your system administrator to obtain all required network parameters.



It is important to assign an IP address statically, not using a DHCP service, in order to properly reference the camera from WebCCTV software.

- Click **Save** button.

2.3 Administrator credentials configuring

To change administrator credentials do the following:

1. Go to **Administrator functions->Changing the password.**

The screenshot shows the web interface for changing administrator credentials. The sidebar on the left contains a menu with the following items: Camera Settings, Network Settings, Security Settings, Multi-Screen Display Settings, Administrator Functions (selected), and Log Management. Under Administrator Functions, there is a sub-menu with: 1. Changing the Password, 2. Setting the Time, and 3. Firmware Update. The main content area is titled 'Administrator Function - Changing the Password' and contains the following text: 'Changing the log-in ID and/or password for logging into the control window.' Below this text are five input fields: 'Current login ID' with the value 'root', 'Current Password' with the value '****', 'New login ID' with the value 'Administrator', 'New Password' with the value '*****', and 'New Password (Confirm)' with the value '*****'. At the bottom right of the form are two buttons: 'reset' and 'save'.

Changing Administrator Credentials Screen

2. Specify current **Login ID** and **Password** in the corresponding fields.



Default administrator credentials are:

Login ID: root

Password: ikwb

3. Specify new Login ID
4. Specify new password and confirm it in the corresponding fields.
5. Click **Save**.



Use these credentials while adding the camera to WebCCTV software.

3 Advanced camera configuration

Quadrox recommends implementing the following settings:

1. Go to **Camera Settings->General** item.

The screenshot shows the 'Camera - General Settings' page. On the left is a sidebar with a navigation menu including 'Camera Settings' (with sub-items: General, PAN/TILT, Alarm, Privacy Mask, Recording), 'Network Settings', 'Security Settings', 'Multi-Screen Display Settings', 'Administrator Functions', and 'Log Management'. The main content area contains the following settings:

| | |
|--------------------------|---|
| Camera Picture Size | 640x480 |
| Picture Quality | LOW |
| Frame Rate | HIGH |
| Installation Environment | <input checked="" type="radio"/> Desktop/Wall (image is not rotated) <input type="radio"/> Ceiling (image is rotated 180°) |
| AE Compensation | 0 |
| Auto B/W | <input type="radio"/> ON <input checked="" type="radio"/> OFF |
| Shutter Speed | AES |
| Auto Slow Shutter | <input type="radio"/> ON <input checked="" type="radio"/> OFF |
| Auto Sensitivity Boost | OFF (picture size reduced when lighting is weak) |
| Sound Sensitivity | MIDDLE |

At the bottom of the settings area are 'reset' and 'save' buttons.

Camera Settings Screen

2. You may not change **Camera Picture Size**, it is adjustable from WebCCTV software.
3. You may choose **Picture Quality** you want, but please note higher picture quality consumes more bandwidth.
4. You may not change **Frame Rate**, it is adjustable from WebCCTV software.
5. You may choose **Installation Environment** depending on a camera location.
6. **AE compensation**, **Auto B/W**, **Shutter Speed** are advanced exposure settings, configure them if you are an experienced user!
7. **Auto Slow Shutter** – must be **OFF!** (ON by default)
8. **Auto Sensitivity Boost** – must be **OFF!** (ON by default)
9. You may configure **Sound Sensitivity**.
10. Click **Save** button.



If you changed the computer IP address before camera configuration – don't forget to put it back.

Free Manuals Download Website

<http://myh66.com>

<http://usermanuals.us>

<http://www.somanuals.com>

<http://www.4manuals.cc>

<http://www.manual-lib.com>

<http://www.404manual.com>

<http://www.luxmanual.com>

<http://aubethermostatmanual.com>

Golf course search by state

<http://golfingnear.com>

Email search by domain

<http://emailbydomain.com>

Auto manuals search

<http://auto.somanuals.com>

TV manuals search

<http://tv.somanuals.com>