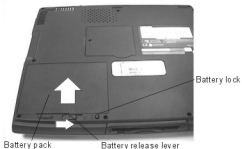


FIELD REPLACEABLE UNIT DOCUMENTATION

Satellite™ 1710CDS

BATTERY PACK REMOVAL



1. Turn the computer upside down as shown.
2. Press the **battery lock** and slide the **battery release lever** to the right and lift out the battery.

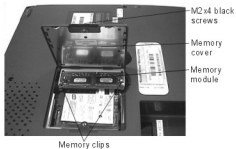
OPTIONAL PCMCIA CARD REMOVAL



1. Pull out the **eject button** of the PC card to be removed.
2. Press the **eject button** and remove the **PC card**.

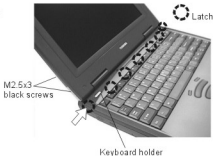
NOTE: Before removing any PCMCIA device, make sure it is "STOPPED" in the PC Card Manager.

EXPANSION MEMORY REMOVAL



1. Turn the computer upside down.
2. Remove **two M2x4 black screws** and remove the **memory cover**.
3. Push the **memory clips** outward and pull the **memory module** out of the connector on a 30 degree angle.

KEYBOARD REMOVAL



1. Open the display panel.
2. Remove **two M2.5x3 black screws** securing the keyboard holder.
3. Unlatch the **keyboard holder** at the top of keyboard starting from the left side.

FIELD REPLACEABLE UNIT DOCUMENTATION

Satellite™ 1710CDS

KEYBOARD REMOVAL



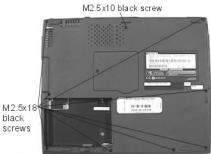
4. Remove **four M2x4 black screws** securing the keyboard.

5. Set the **keyboard** as shown above.
6. Disconnect the **keyboard cable** from **JP7** and **IPS cable** from **JP5**.
7. Lift out the **keyboard**.

TOP COVER REMOVAL



1. Remove **two M2.5x8 silver screws** and **M2.5x12 black screws** securing the LCD assembly.
2. Remove **one M2.5x3 black screw** securing the LCD harness assembly.
3. Disconnect the **LCD harness assembly** from the system board.



4. Remove **eight M2.5x18 black screws** and **one M2.5x10 black screw** securing the bottom cover.

FIELD REPLACEABLE UNIT DOCUMENTATION

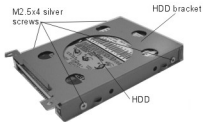
Satellite™ 1710CDS

TOP COVER REMOVAL



5. Disconnect the **sound/IPS switch board** from JP4 on the system board.
6. Disconnect the **LED board cable** from the LED board.
7. Remove **four M2.5x8 silver screws** and **two M2.5x3 black screw** securing the top cover assembly.
8. Remove the top cover.

HDD REMOVAL



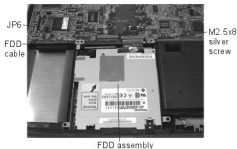
4. Remove **four M2.5x3 silver screws** securing the HDD bracket.
5. Remove the **HDD** from the **HDD bracket**.

HDD REMOVAL



1. Remove **one M2.5x8 silver screw** securing the HDD assembly.
2. Grasp the **HDD assembly handle** and pull it in the direction of the arrow.
3. Lift out the **HDD assembly**.

FDD REMOVAL

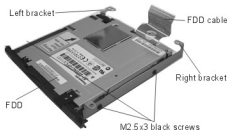


1. Remove **one M2.5x8 silver screw** securing the FDD assembly.
2. Disconnect the **FDD cable** from JP6.
3. Lift out the **FDD assembly**.

FIELD REPLACEABLE UNIT DOCUMENTATION

Satellite™ 1710CDS

FDD REMOVAL



1. Remove **three M2.5x3 black screws** securing the left and right brackets.
2. Lift out the **FDD** and remove the **FDD cable**.

SYSTEM BOARD REMOVAL



1. Remove **four hex screws** at the rear of the computer.
2. Remove **two M2.5x8 silver screws** near the cooling module.

SYSTEM BOARD REMOVAL



3. Push the **PC Card eject button** and lift out the system board as shown above.

CD-ROM DRIVE REMOVAL

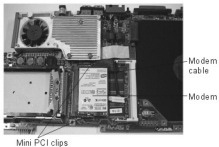


1. Remove **two M2.5x3 black screws** securing the CD-ROM drive assembly.
2. Slide the **CD-ROM drive ass embly** to the left to disconnect from system board.
3. Remove all the CD-ROM brackets.

FIELD REPLACEABLE UNIT DOCUMENTATION

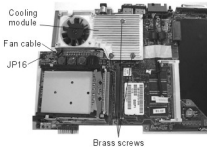
Satellite™ 1710CDS

MODEM REMOVAL



1. Disconnect the **modem cable** from the modem board.
2. Spread the **mini PCI clips** securing the modem board and remove **the modem board** on a 30 degree angle.

COOLING MODULE REMOVAL



1. Disconnect the **fan cable** from **JP16** on the system board.
2. Remove **three brass screws** securing the cooling module.
3. Lift out the **cooling module**.

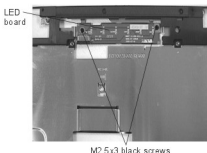
CPU BOARD REMOVAL



1. Using a flat head screw driver, insert the screwdriver into the CPU lock slot and turn it counterclockwise.

NOTE: Use exact size of screw driver.

LED BOARD REMOVAL

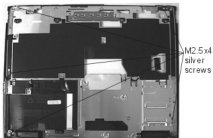


1. Remove **two M2.5x3 black screws** securing the LED board.
2. Lift out the **LED board**.

FIELD REPLACEABLE UNIT DOCUMENTATION

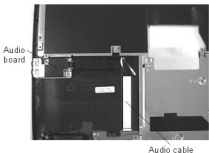
Satellite™ 1710CDS

HINGE BRACKET REMOVAL



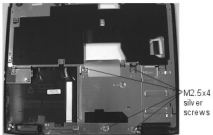
1. Remove **five M2.5x4 silver screws** securing hinge bracket.
2. Lift out the **hinge bracket**.

AUDIO BOARD REMOVAL

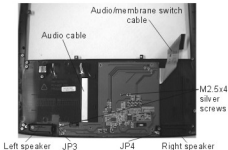


1. Disconnect the **audio cable** from the audio board.
2. Remove **two M2.5x4 silver screws** securing the audio board.
3. Lift out the **Audio board**.

AUDIO/MEMBRANE SWITCH REMOVAL



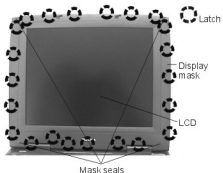
1. Remove **four M2.5x4 silver screws** securing the metal plate.
2. Lift out the **metal plate**



1. Remove **two M2.5x4 silver screws** securing the audio/membrane switch board.
2. Disconnect the **left and right speakers** from **JP3 and JP4**.
3. Disconnect the **audio** and the **audio/membrane switch cables**.

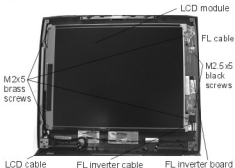
Satellite™ 1710CDS

12.1 TFT DISPLAY MASK REMOVAL



1. Remove **four mask seals** at each corner of the display assembly.
2. Remove **four M2.5x5 brass screws** securing the display mask.
3. There are **22 latches** securing the **display mask**. Carefully insert your fingers between the **display mask** and the **LCD module** and pry open the latches starting from the **top six latches**, to the **five latches on the right and left sides**, ending with the **six bottom latches**.

FL INVERTER AND LCD REMOVAL



1. Remove **two M2.5x5 black screw** securing FL inverter board.
2. Carefully lift up the **FL inverter board** and disconnect the **FL inverter cable** from **CN1** and the **FL cable** from **CN2**.
3. Remove **four M3X6 brass screws** securing the **LCD module**.
4. Carefully rotate the **LCD module** from right to left of the LCD cover.
5. Disconnect the **LCD cable** from the LCD module and remove the **LCD** from the computer.

Free Manuals Download Website

<http://myh66.com>

<http://usermanuals.us>

<http://www.somanuals.com>

<http://www.4manuals.cc>

<http://www.manual-lib.com>

<http://www.404manual.com>

<http://www.luxmanual.com>

<http://aubethermostatmanual.com>

Golf course search by state

<http://golfingnear.com>

Email search by domain

<http://emailbydomain.com>

Auto manuals search

<http://auto.somanuals.com>

TV manuals search

<http://tv.somanuals.com>