

# TOSHIBA

## SPECIFICATIONS

Product Number	PS510L-00MQF
Processor	Mobile Intel® Pentium® 4 processor 1.70GHz featuring Enhanced Intel® SpeedStep™ Technology, 20KB L1 Integrated (400MHz Processor Side Bus)
L2 Cache	512KB L2 integrated
Chipset	Intel® 845MP
Memory	256MB PC2100 DDR SDRAM, expandable to 512MB
Mass Storage	30GB S.M.A.R.T.
Hard Disk	8X/8X/8X CD-RW/DVD-ROM Combo Drive (max. 24X when CD-ROM is accessed)
CD-RW/DVD-ROM Diskette Drive	External 3.5" 1.44MB USB diskette drive
Display	Internal 15.0" Super Fine Screen TFT active matrix 16.7 million colors at 1,600 x 1,200 resolution
External Video Modes	Max. 16.7M colors at 640 x 480 resolution, 800 x 600 resolution, 1,024 x 768 resolution, 1,280 x 1,024 resolution
Graphics Controller	nVIDIA GeForce4 440 Go Graphics Processing Unit, 256-bit 2D/3D graphics accelerator, 4x AGP Bus, 32MB DDR 64-bit width Video Memory
Integrated Communication Device	Integrated international V.90 modem (56Kbps data, 14.4Kbps fax) and 10/100Mbps Ethernet
Keyboard	85-key Ergonomic Keyboard, TouchPad with Scroll function, Windows® Key, Application Key and hot key functions, CD/DVD/MP3 Control buttons with Sub LCD, Internet Browser Launch button, Toshiba Console Button (user-programmable)
PC Card slots	Type III x 1 or Type II x 2 (Card Bus supported)
Expansion Ports	USB x 3, RGB, i.LINK (IEEE 1394), SD Media slot, SmartMedia™ card slot, TV-Out port (NTSC/PAL), Fast Infrared (4Mbps), External Microphone, Headphone (integrated with S/P DIF), Line-in, Line-out (unified with TV-Out), Dolby AC3 Digital support (S/P DIF optical), RJ-11, RJ-45, DC-in
Sound	Yamaha YMF753, 16-bit stereo Windows Sound System and SoundBlaster Pro compatible, 3D Sound supported, Dolby Digital Surround Sound, Harman/Kardon built-in stereo speakers with subwoofer, volume buttons
Power Supply	Universal 100-240V AC adaptor for worldwide usage
Battery Type/Life <sup>1</sup>	Exchangeable Lithium-Ion battery, up to 2.0 hours of battery life
Security	Cable Lock port, Power on Password, Supervisor Password, Keyboard Lock, Screen Blank
System Management	ACPI power management
Pre-installed OS	Microsoft® Windows® XP Home Edition operating system
Bundled software & CD	Toshiba Utilities, Microsoft® Internet Explorer, Microsoft® Media Player 7, InterVideo™ WinDVD, Drag n Drop writing software, Toshiba Configuration Builder CD
Dimensions (W x D x H) <sup>2</sup>	330 x 296 x 47.6 mm
Weight	3.2kg (w/ battery pack & CD-RW/DVD-ROM drive)
Warranty	1-year parts & labor International Limited Warranty
Options	PA3126U-1M12 PC2100 128MB Memory Kit PA3127U-1M25 PC2100 256MB Memory Kit PA3083U-1ACA Universal 75W AC Adaptor PA3178U-1BAS Lithium Ion Rechargeable Battery Pack PA3109U-1FDD External USB FDD Kit PA3079T-1PCC Toshiba 2GB Type II PC Card HDD

<sup>1</sup>Battery Life may vary depending on operating systems, applications, power management settings and features utilized.

<sup>2</sup>Thickness may vary at certain points on the system.  
HDD Calculation: 1GB=1 billion bytes

Footnote:  
TSP May 2002, TSP-MKG-POP0013. Design and specifications are subject to change without notice. Availability and configurations may vary by country. Intel, Intel Inside Logo, Pentium and SpeedStep are registered trademarks of Intel Corporation. Microsoft, Windows and the Microsoft logo are trademarks or registered trademarks of Microsoft Corporation. SmartMedia is a trademark of Toshiba Corporation. All other products and names mentioned are the property of their respective owners.

# TOSHIBA

WORKING WITH PASSION



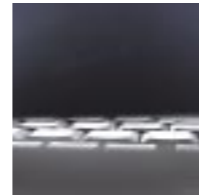
Choose freedom.

[pc.toshiba-asia.com](http://pc.toshiba-asia.com)

Choose freedom.



TAKING HIGH-POWERED MOBILE  
MULTIMEDIA TO ANOTHER LEVEL



Today's business and multimedia applications provide incredible functionality and total ease of use. They also demand phenomenal power and speed from the systems they run on. Toshiba Satellite 5100 is a powerhouse innovatively-styled notebook computer that doesn't apologize for its mobility by compromising on power, features and flexibility.

Extraordinary NVIDIA GeForce4 440 Go graphics with 32MB DDR video memory, Dolby Digital Surround Sound, Harman/Kardon speakers with sub-woofer, DVD/CDRW combo drive and a brilliant 15" UXGA Super Fine View TFT Screen combine to deliver an incredible digital multimedia experience ... without the weight of a desktop!



#### CLASS-LEADING DESIGN

Toshiba Satellite 5100's stylish, high-tech royal blue casing with its smoke-blue keys create a memorable impression that hint at the awesome potential power.

#### FULL FLEXIBILITY

Everything about the Satellite 5100 optimizes the mobile computing experience — the massive 15" TFT-display, full-size keyboard and impressive Li-ion Quick Charge battery. You get freedom, without penalty.

#### SPECTACULAR PERFORMANCE

Even the most demanding applications can be handled easily with a Mobile Intel® Pentium® 4 processor-M 1.70GHz, 256MB PC2100 DDR SDRAM and 30GB hard disk.

#### COMPREHENSIVE COMMUNICATIONS FEATURES

Excellent communications and connectivity let you enjoy high-speed access to the Internet, or transfer data to and from camcorders, digital cameras or PDAs using data memory cards inserted into the Secure Digital™ or SmartMedia™ slot, or via the i.LINK (IEEE 1394) connectivity.

#### AMAZING DIGITAL MEDIA CAPABILITIES

A dedicated Multimedia Bar with a blue backlitged Sub LCD offers convenient one-touch control keys for CD/ DVD/ MP3 playback and even allows you to enjoy your favorite music without having to power up your notebook computer.

**Satellite 5100**



## Free Manuals Download Website

<http://myh66.com>

<http://usermanuals.us>

<http://www.somanuals.com>

<http://www.4manuals.cc>

<http://www.manual-lib.com>

<http://www.404manual.com>

<http://www.luxmanual.com>

<http://aubethermostatmanual.com>

Golf course search by state

<http://golfingnear.com>

Email search by domain

<http://emailbydomain.com>

Auto manuals search

<http://auto.somanuals.com>

TV manuals search

<http://tv.somanuals.com>