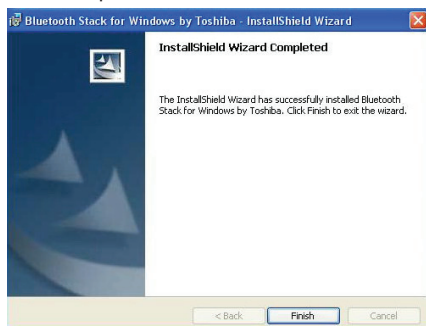
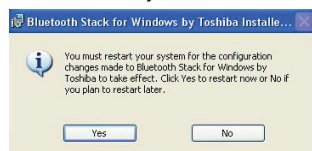


E. Installation is completed. Click the Finish button.



F. Click the Yes button to restart your PC



## Contact Us

### ■ Contact Technical Support

**Web:** [http://www.sena.com/support/contact\\_support/](http://www.sena.com/support/contact_support/)

**Email:** [support@sena.com](mailto:support@sena.com)

**Phone:**

Toll Free (US/Canada): 1-8668-US-SENA (1-866-887-7362)

Outside from US/Canada: +1 (408) 573-7425

### ■ Contact Sales

**Web:** [http://www.sena.com/where\\_to\\_buy/contact\\_sales/](http://www.sena.com/where_to_buy/contact_sales/)

**Email:** [sales@sena.com](mailto:sales@sena.com)

**Phone:**

Toll Free (US/Canada): 1-8668-US-SENA (1-866-887-7362)

America: +1 (408) 573-7425

EU/Africa: +33 (0) 1 53 53 16 29

Asia/Pacific: +82 (2) 529-7024

Quick Start Guide

Parani™

SENA

## Package List

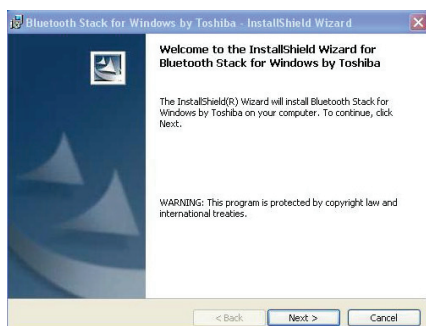
- Parani-UD100
- Stub Antenna
- Quick Start Guide
- CD-ROM including Windows Bluetooth driver, User Guide and Data sheet

## Installing the Bluetooth Software

This document describes how to install and set up the Bluetooth software on your computer when you plug the Parani-UD100 to your computer for the first time.

**CAUTION :** Before connecting the Parani-UD100, you must install the Bluetooth software. You should also uninstall any kind of Bluetooth driver or utility already installed on your computer such as Widcomm BTW or Toshiba, if any.

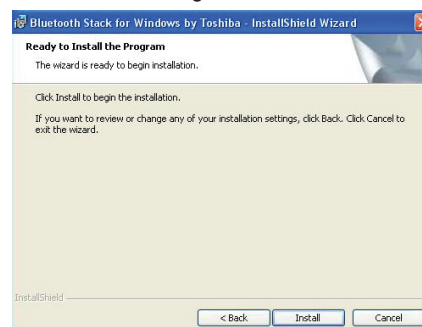
A. Insert the installation software CD. Click on "Install Bluetooth Utility / Driver". The InstallShield wizard is started. Click the Next button.



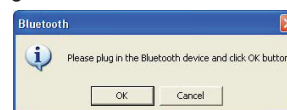
B. Read the License and click the "I accept the terms in the license agreement" radio button. Then click the Next button.



C. Click the Install button to begin the installation.



D. During installation, you should plug in the Parani-UD100 to USB port. After plugging in it, click the OK button.



## Free Manuals Download Website

<http://myh66.com>

<http://usermanuals.us>

<http://www.somanuals.com>

<http://www.4manuals.cc>

<http://www.manual-lib.com>

<http://www.404manual.com>

<http://www.luxmanual.com>

<http://aubethermostatmanual.com>

Golf course search by state

<http://golfingnear.com>

Email search by domain

<http://emailbydomain.com>

Auto manuals search

<http://auto.somanuals.com>

TV manuals search

<http://tv.somanuals.com>