

Network expansion kit Online Manual (for network printer)

Start

Click this "Start" button.

Introduction

The optional network expansion kit enables the machine to be used as a network printer.

This manual explains the network printer functions that can be used when the network expansion kit is installed.

To use the machine as a PS printer, the PS3 expansion kit (GA-1180) must be installed. After installing the expansion kit, the product key (password) must be entered in "Product Key Setting" in the Web page (this is only required once). Please consult your dealer for the product key to be entered.



- This manual refers to the Multifunctional Digital Systems e-STUDIO203S/203SD as "the machine".
- For information on copier functions, adding paper and toner, removing misfeeds, using peripheral equipment, and other general information, see the operation manual for the machine. For information on the scanner functions that can be used when the network expansion kit is installed, see the online manual for network scanner that accompanies the network expansion kit.
- The machine's default settings and default settings for the printer function can be changed using the user programs. For more information, see the operation manual for the machine.
- Where "e-STUDIOXXXX" appears in this manual, please substitute the name of your model.
- This manual refers to the Reversing Automatic Document Feeder as the "RADF".
- The explanations of screens and procedures in this manual are primarily for Windows® XP in Windows® environments, and Mac OS X v10.4 in Macintosh environments. The screens may vary in other versions of the operating systems.
- For information on using your operating system, refer to your operating system's manual or online Help.
- The PS3 expansion kit (GA-1180) mentioned in this manual is an option.

Trademark Acknowledgments

- Microsoft®, Windows®, Windows® 98, Windows® Me, Windows® 2000, Windows® XP, Windows Server® 2003, Windows Vista® and Internet Explorer® are registered trademarks or trademarks of Microsoft Corporation in the U.S.A. and other countries.
- Macintosh, Mac OS, AppleTalk, EtherTalk and LaserWriter are trademarks or Apple Inc., registered in the U.S. and other countries.
- Adobe, the Adobe logo, Acrobat, the Adobe PDF logo, and Reader are registered trademarks or trademarks of Adobe Systems Incorporated in the United States and other countries.
- PCL is a registered trademark of the Hewlett-Packard Company.
- PostScript is a registered trademark of Adobe Systems Incorporated.
- All other trademarks and copyrights are the property of their respective owners.

The display screens, messages, and key names shown in the manual may differ from those on the actual machine due to product improvements and modifications.



How to use the online manual

This section explains how to view the online manual. Please read this section before using the online manual. For information on using Acrobat Reader, see Acrobat Reader Help.

How to Control the Online Manual

In this manual, the following buttons are displayed at the bottom of each page. Click these buttons to move quickly to pages that you wish to view.

CONTENTS

Displays the Contents of this manual. Click on a topic in the Contents to jump directly to that section.

I N D E X

Displays the Index of this manual. Click on a topic in the Index to jump directly to that section.



Takes you forward page by page.



Takes you back page by page.

Following Links

This manual uses a link function that allows you to jump to a related page. If you click green, underlined text, the related page will be displayed. (In the Contents and Index sections, the linked areas are not underlined.)

Example: [Contents](#)

To return to the previous page, click the ← button on the menu bar of Acrobat Reader.

Using Bookmarks

Bookmarks have been created on the left side of this manual. You can click on a bookmark to jump directly to that section.

How to Print Out This Manual

To print this manual, select "Print" from the "File" menu of Acrobat Reader. Select the desired printer settings in the "Print" dialog box, and then click the "OK" button.

CONTENTS

I N D E X

Download from Www.Somanuals.com. All Manuals Search And Download.



3



Introduction	2
How to use the online manual	3

1 PRINTING FROM WINDOWS

Basic printing	6
• If the tray runs out of paper during printing	7
• Cancel a print job	7
• When "Paper Source" is set to "Auto Select"	7
Opening the printer driver from the "start" button	8
Printer driver settings	9
Two-sided printing	10
• Pamphlet style	11
Printing multiple pages on one page	12
Fitting the printed image to the paper	13
Rotating the print image 180 degrees	14
Printing a watermark	15
• How to Print a Watermark	15
Printing text and lines/graphics in black	16
• Printing text in black	16
• Printing lines and vector graphics in black	16

2 PRINTER UTILITIES (WINDOWS)

Printer utilities	17
• Before using the Printer Status Monitor	17
Using the printer utilities	18
• Starting up the printer utilities	18
• Using the printer utilities	18
• Changing the Printer Status Monitor settings	19
• Checking the printer status	20

3 PRINTING FROM MACINTOSH

Basic printing	21
• If the tray runs out of paper during printing	22
• Cancel a print job	22
• When "Paper Feed" is set to "Auto Select"	22



4 WEB FUNCTIONS IN THE MACHINE

About the Web pages	23
• How to access the Web page and view help	23
About the Web pages (for users)	24
Directly printing a file in a computer	25
• Advanced job settings	25
Configuring the printer condition settings	26
• How to configure the settings	27
• Printer condition setting menu	28
• Printer condition settings	29
About the Web pages (for the administrator)	32
Protecting information programmed in the web page ([Passwords])	33
E-mail print function	34
• Setting up the E-mail print function	34
• Using the E-mail print function	35
Key operator programs	36
• Configuring a setting in the key operator programs	36
• Key operator programs	37
E-mail status and e-mail alert settings	38
• Information setup	38
• SMTP setup	38
• Status message setup	39
• Alerts message setup	40

5 TROUBLESHOOTING

Troubleshooting	41
• Check the connections	41
Removing the software	42
• Windows	42
• Macintosh (Mac OS 9.0 to 9.2.2)	42

6 SPECIFICATIONS

Printer specifications	43
Printer driver specifications	44

7 INDEX



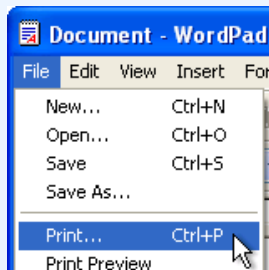
The following example explains how to print a document from WordPad.

Before printing, make sure that the correct size of paper for your document has been loaded in the machine.

1 Start WordPad and open the document that you wish to print.

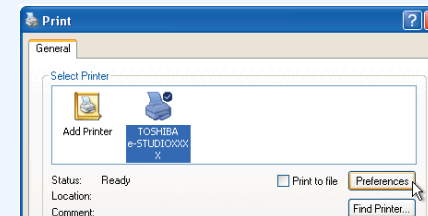
2 Select "Print" from the application's "File" menu.

The "Print" dialog box will appear.



3 Make sure that "TOSHIBA e-STUDIOXXX" is selected as the printer. If you need to change any print settings, click the "Preferences" button ("Properties" button in Windows 98/Me) to open the printer driver setup screen.

The printer driver setup screen will appear.



Windows 2000 does not have the "Preferences" button in this dialog box. Select settings as needed on each of the tabs in the setup screen.

☞ [Printer driver settings](#), [Two-sided printing](#), [Printing multiple pages on one page](#), [Fitting the printed image to the paper](#), [Rotating the print image 180 degrees](#), [Printing a watermark](#)

4 Click the "Print" button ("OK" button in Windows 98/Me).

Printing begins.

The print job is delivered to the output tray, with the position of the paper offset slightly from the previous job (offset function).

If the tray runs out of paper during printing

Printing will automatically resume when paper is loaded in the tray.

When using the bypass tray, select printer mode with the mode select key on the machine, load paper as instructed by the message in the display, and then press the [START] key to resume printing.

When the 250-sheet paper feed unit is installed:

Note that if the "AUTO TRAY SWITCH" setting in the user programs is enabled and there is the same size of paper in another tray, the machine will automatically switch to the other tray and continue printing.

Cancel a print job

To cancel a print job that is already in progress, select printer mode with the mode select key on the machine and then press the [CLEAR] key (C) or the [CLEAR ALL] key (CA).

"CANCEL PRINT JOB?" will appear in the display. Select "YES" and press the [ENTER] key.

When "Paper Source" is set to "Auto Select"

If "Paper Source" is set to "Auto Select" in the "Paper" tab of the printer driver setup screen and the correct size of paper for a print job is not loaded in the machine, the printing procedure will vary depending on the "FORCED OUTPUT" setting in the user programs (see "USER PROGRAMS" in the Operation Manual).

When "FORCED OUTPUT" is set to "OFF"

Select printer mode with the mode select key on the machine, check the message in the display, load paper in the bypass tray, and then press the [START] key to begin printing.

When "FORCED OUTPUT" is set to "ON"

Printing takes place on the paper loaded in the machine, even though the paper size is different from the print image size.



Opening the printer driver from the "start" button

Printer driver settings can be configured by opening the printer driver from the Windows "start" button. Settings adjusted in this way will be the initial settings when you print from an application. (If you change the settings in the printer driver setup screen at the time of printing, the settings will revert to the initial settings when you quit the application.)

Windows 2000/XP/Server 2003/Vista

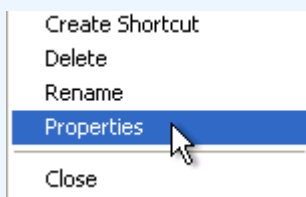
1 Click the "start" button, and then click "Control Panel".

- On Windows 2000, click the "Start" button and select "Settings".
- On Windows Server 2003, click the "Start" button and then click "Printers and Faxes". Go to step 3.

2 Click "Printers and Other Hardware", and then click "Printers and Faxes".

- On Windows Vista, click "Printer".
- On Windows 2000, click "Printers".

3 Click the "TOSHIBA e-STUDIOXXX" printer driver icon and select "Properties" from the "File" menu.



On Windows Vista, select "Properties" from the "Organize" menu.

4 Click the "Printing Preferences" button in the "General" tab.

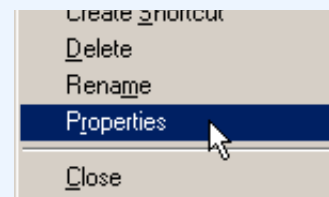
The printer driver setup screen will appear.

👉 [Printer driver settings](#)

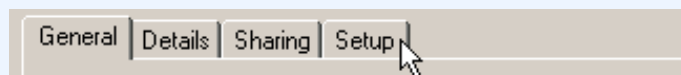
Windows 98/Me

1 Click the "Start" button, select "Settings" and then click "Printers".

2 Click the "TOSHIBA e-STUDIOXXX" printer driver icon and select "Properties" from the "File" menu.



3 On Windows 98/Me, click the "Setup" tab.





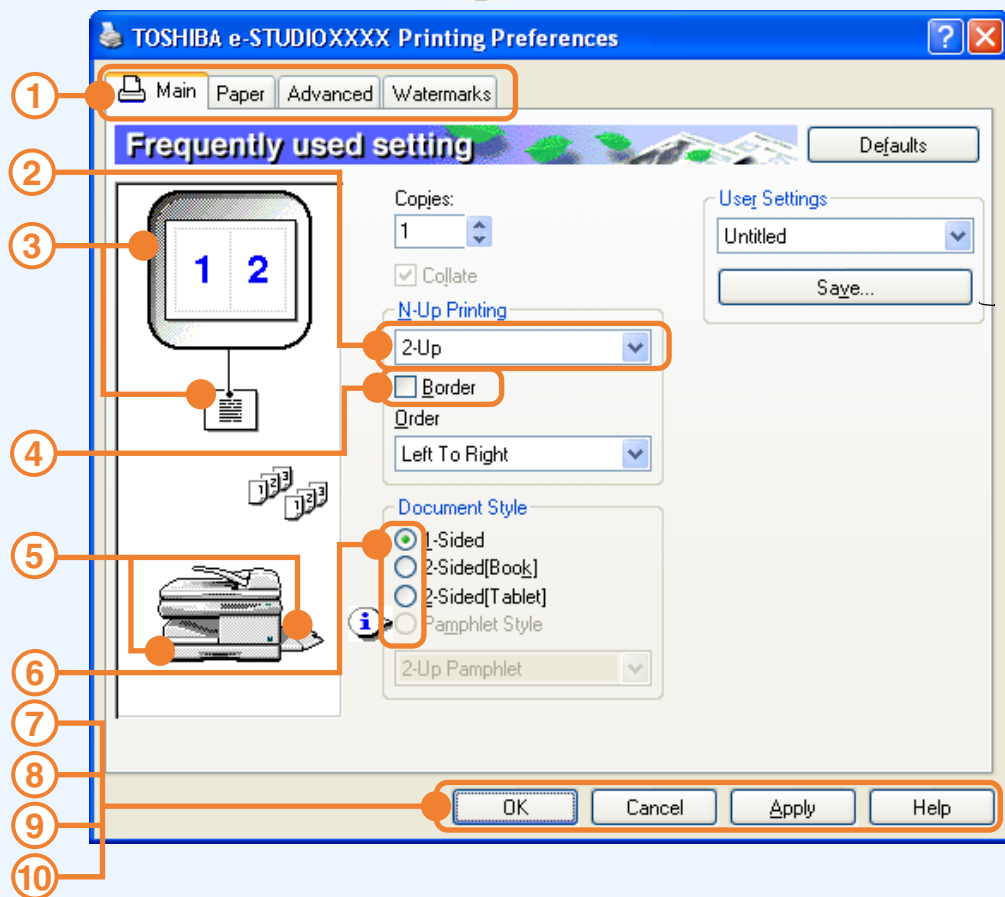
The printer driver setup screen will appear.

👉 [Printer driver settings](#)

1

Printer driver settings

To view Help for a setting, click the  button in the upper right-hand corner of the window and then click the setting. Some restrictions exist on the combinations of settings that can be selected in the printer driver setup screen. When a restriction is in effect, an information icon () will appear next to the setting. Click the icon to view an explanation of the restriction.



- 1 Tab**
The settings are grouped on tabs. Click on a tab to bring it to the front.
- 2 Drop-down list**
Allows you to make a selection from a list of choices.
- 3 Print setting image**
This shows the effect of the selected print settings.
- 4 Checkbox**
Click on a checkbox to activate or deactivate a function.
- 5 Machine image**
The paper tray (in blue) selected in "Paper selection" on the "Paper" tab. You can also click on a tray to select it.
- 6 Check button**
Allows you to select one item from a list of options.
- 7 "OK" button**
Click this button to save your settings and exit the dialog box.
- 8 "Cancel" button**
Click this button to exit the dialog box without making any changes to the settings.
- 9 "Apply" button**
Click to save your settings without closing the dialog box.
- 10 "Help" button**
Click this button to display the help file for the printer driver.

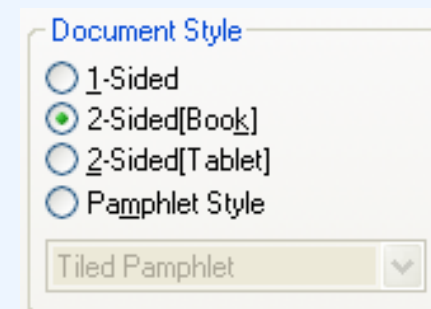


The settings and the image of the machine will vary depending on the model. The printer driver setup screen allows you to select various functions that can be used when the network expansion kit is installed. For information on the printer functions of the network expansion kit, see "[Printer driver specifications](#)".



The printer driver setup screen of models that support two-sided printing contains a "Document Style" setting in the "Main" tab. This feature allows you to print on both sides of the paper. To use this function, open the printer driver setup screen and select "2-Sided (Book)" or "2-Sided (Tablet)" from "Document Style" in the "Main" tab.

☞ See [Basic printing](#) for details on how to open the printer driver.



- Paper sizes that can be used for two-sided printing are Letter, Legal, Folio*, Invoice, A4, A5, B5, Foolscap, and 16K.
- When using two-sided printing, select a source other than "Bypass Tray" for the "Paper Source" in the "Paper" tab.
 - * For two-sided printing on Folio size paper, "Tray 1" or "Tray 2" (if Tray 2 has been installed) must be selected in the "Paper Source" on the "Paper" tab.

The following example shows the result when portrait data is printed on both sides of the paper.

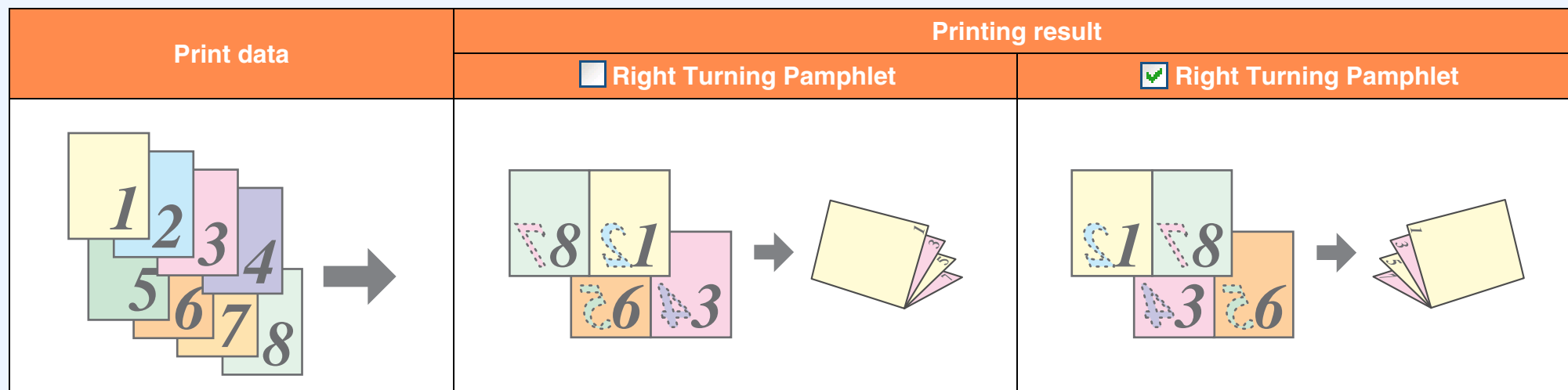
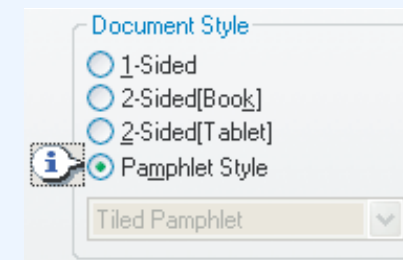
Print data	Printing result	
	2-Sided (Book)	2-Sided (Tablet)
	<p>The pages are printed so that they can be bound at the side.</p>	<p>The pages are printed so that they can be bound at the top.</p>

Pamphlet style

Pamphlet style prints two pages each on the front and back of each sheet of paper (four pages total on one sheet) so that the sheets can be folded down the center and bound to create a pamphlet. This function is convenient when you wish to compile printed pages into a pamphlet.

To use this function, open the printer driver and select "Pamphlet Style" in "Document Style" in the "Main" tab.

The direction of opening of the pamphlet can be selected with the "Right Turning Pamphlet" checkbox in the "Advanced" tab. The following examples show how 8 pages are printed when pamphlet style is selected.



- Only letter, invoice, A4 and A5 size paper can be used for pamphlet style printing.
- Because four pages are printed on each sheet of paper, blank pages are automatically added at the end when the total number of pages is not a multiple of four.
- When "Tiled Pamphlet" is selected, printing will take place on paper that is twice the size of the paper size specified in the application.
- When "2-Up Pamphlet" is selected, each page is reduced in the same way as for 2-Up and printed on the size of paper that is specified in the application.

1

Printing multiple pages on one page

This feature allows you to reduce and print two, four, six, eight or sixteen document pages on a single sheet of paper. To use this function, open the printer driver setup screen and select the number of pages per sheet (2-Up, 4-Up, 6-Up, 8-Up, or 16-Up) in "N-Up Printing" in the "Main" tab.

The order of the pages can be changed in the "Order" menu.

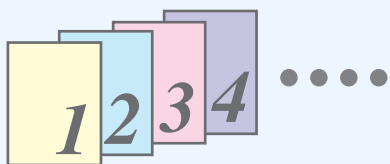
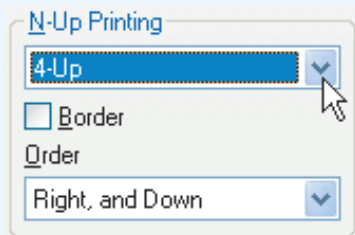
☞ See [Basic printing](#) for details on how to open the printer driver.



The "N-Up Printing" setting is not available when "Fit To Paper Size" is selected.

☞ [Fitting the printed image to the paper](#)

For example, when "2-Up" or "4-Up" is selected, the result will be as follows depending on the selected order.



N-Up	Left to Right	Right to Left		
[2-Up]				
N-Up	Right , and Down	Down , and Right	Left , and Down	Down , and Left
[4-Up]				

If you select the "Border" checkbox, borderlines will be printed around each page.



Examples for 2-Up and 4-Up are shown here. The order of 6-Up, 8-Up, and 16-Up is the same as 4-Up. The order can be viewed in the print setting image in the printer driver setup screen.

☞ [Printer driver settings](#)



1

Fitting the printed image to the paper

The printer driver can adjust the size of the printed image to match the size of the paper loaded in the machine. Follow the steps shown below to use this function. The explanation below assumes that you intend to print a letter size document on invoice size paper.

☞ See [Basic printing](#) for details on how to open the printer driver.



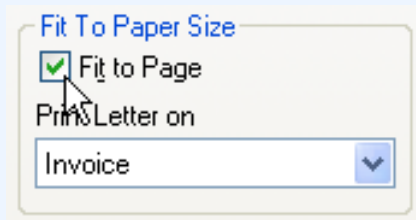
The "Fit To Paper Size" setting is not available when "N-Up Printing" is selected.

☞ [Printing multiple pages on one page](#)

1 Click the "Paper" tab in the printer driver setup screen.

2 Select the original size (Letter) of the print image in "Paper Size".

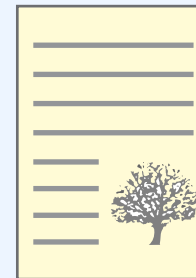
3 Check the "Fit to Page" box.
When using the PS printer driver, select "Fit To Paper Size" in "Zoom Setting".



4 Select the actual size of paper to be used for printing (Invoice).

The size of the printed image will be automatically adjusted to match the paper loaded in the machine.

Paper Size: Letter
Fit To Paper Size: Invoice



Letter size document
(Paper Size)



Invoice size paper
(Fit To Paper Size)



- If "A3 [Fit to Page]", "B4 [Fit to Page]", or "Ledger [Fit to Page]" is selected, the print image is fit to the letter size even if "Fit to Page" is not selected.
- When using the PS printer driver, the print image can be enlarged or reduced by means of numerical values. (The vertical and horizontal ratios can be set separately.) Select "XY-Zoom" in step 3, click the "Width/Length" button, and adjust the ratios in the screen that appears.



Rotating the print image 180 degrees

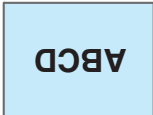
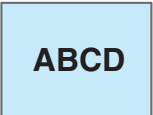
The print image can be rotated 180 degrees.

This feature is used to enable correct printing on envelopes and other paper with flaps that can only be loaded in one orientation.

To use the feature, select the image orientation in "Image Orientation" on the "Paper" tab, and then select the "Rotate 180 degrees" checkbox.

☞ See [Basic printing](#) for details on how to open the printer driver.



Printing result	
<input checked="" type="checkbox"/> Rotate 180 degrees	<input type="checkbox"/> Rotate 180 degrees
	



The procedure for loading paper is explained in the operation manual for the machine.

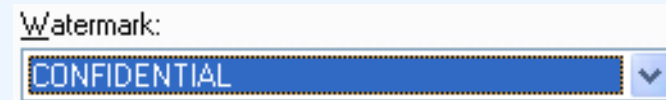
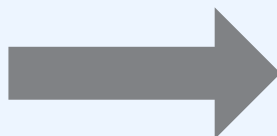
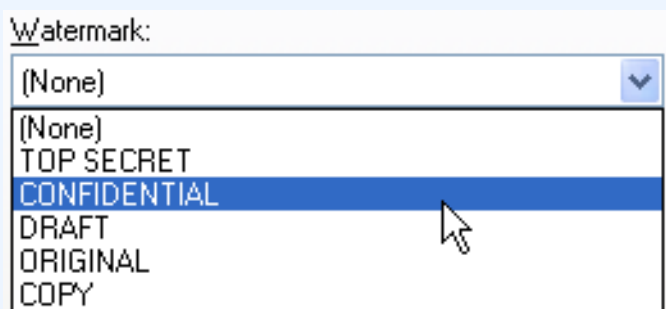
Printing a watermark

You can print a watermark such as "CONFIDENTIAL" on your document. To print a watermark, open the printer driver, click the "Watermarks" tab, and follow the steps below.

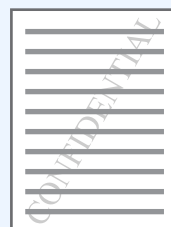
☞ See [Basic printing](#) for details on how to open the printer driver.

How to Print a Watermark

From the "Watermark" drop-down list, select the watermark that you wish to print (for example "CONFIDENTIAL"), and start printing.



Print sample



You can enter text to create your own custom watermark. For details on watermark settings, view printer driver Help.




☞ [Printer driver settings](#)

Printing text and lines/graphics in black

Color text, lines and vector graphics that are faint when printed normally can be printed in black to improve legibility.

Printing text in black

Text that is any color other than white is printed in black. To use this function, open the printer driver setup screen and select the "Text To Black" checkbox in the "Advanced" tab.

Print data	Printing result	
	<input type="checkbox"/> Text To Black	<input checked="" type="checkbox"/> Text To Black
		

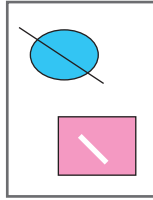
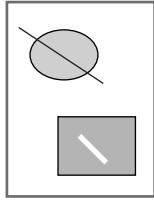
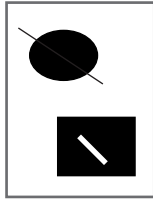


- When using the PCL6 printer driver, if "Print as graphics" is selected in "TrueType Mode" of "Font" in the "Advanced" tab, this function cannot be used.
- When using the PCL5e printer driver, if "Raster" is selected in "Graphics mode" in the "Advanced" tab, this function cannot be used.

Printing lines and vector graphics in black

Lines and vector graphics that are any color other than white are printed in black.

To use this function, open the printer driver setup screen and select the "Vector To Black" checkbox in the "Advanced" tab.

Print data	Printing result	
	<input type="checkbox"/> Vector To Black	<input checked="" type="checkbox"/> Vector To Black
		



When using the PCL6 or PCL5e printer driver, if "Raster" is selected in "Graphics mode" in the "Advanced" tab, this function cannot be used.

Printer Status Monitor (for general users)

"Printer Status Monitor" is on the "Software CD-ROM" (Disc 1). This allows the user to check on the computer screen whether or not the machine is able to print.

It provides information on error states such as paper misfeeds and shows the configuration of the machine (number of trays, etc.) by means of illustrations. Available paper sizes and paper remaining are also indicated.

Printer Administration Utility (for administrators)

"Printer Administration Utility" is on the "Software CD-ROM" (Disc 2).

This allows the administrator to check information on supplies and error states of the machine and other TOSHIBA printers (compatible with the Printer Administration Utility) that are connected to the network. Settings can also be changed via the utility.



- In order to use the Printer Status Monitor and Printer Administration Utility, the machine must be connected to a network.
- To install the Printer Status Monitor, see the network expansion kit online manual (for setup).

Before using the Printer Status Monitor

Note the following points before using the Printer Status Monitor.

Printing via a server

When the first print job is executed after starting up the Printer Status Monitor, the machine's IP address is automatically set in the Printer Status Monitor.

Direct printing without a server

Install and configure the software as explained in "INSTALLING THE PRINTER DRIVER" in the software setup guide for network printer. (This is not necessary if the software has already been installed and configured.)



Starting up the printer utilities

If the Printer Status Monitor or Printer Administration Utility is not running, use the following procedure to start the utilities.



When the Printer Administration Utility is first started up, the TCP/IP settings window appears. To monitor the machine on a local network, select the "Local Subnet Search" checkbox. Otherwise, enter the machine's IP address. For more information, see the Help file.

Printer Status Monitor

Click the "Start" button, point to "All Programs" ("Programs" in operating systems other than Windows XP/Server 2003/Vista) and then "TOSHIBA Printer Status Monitor". Select "Printer Status Monitor".

Printer Administration Utility

Click the "Start" button, point to "All Programs" ("Programs" in operating systems other than Windows XP/Server 2003/Vista) and then "TOSHIBA Printer Administration Utility". Select "Printer Administration Utility".

Using the printer utilities

For information on using the Printer Status Monitor and Printer Administration Utility, see the Help files for each. The Help files can be viewed as follows:

Printer Status Monitor

Click the "Start" button, point to "All Programs" ("Programs" in operating systems other than Windows XP/Server 2003/Vista) and then "TOSHIBA Printer Status Monitor". Select "Help".


Printer Administration Utility

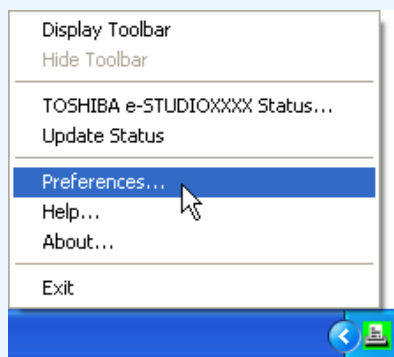
Click the "Start" button, point to "All Programs" ("Programs" in operating systems other than Windows XP/Server 2003/Vista) and then "TOSHIBA Printer Administration Utility". Select "Help".



Changing the Printer Status Monitor settings

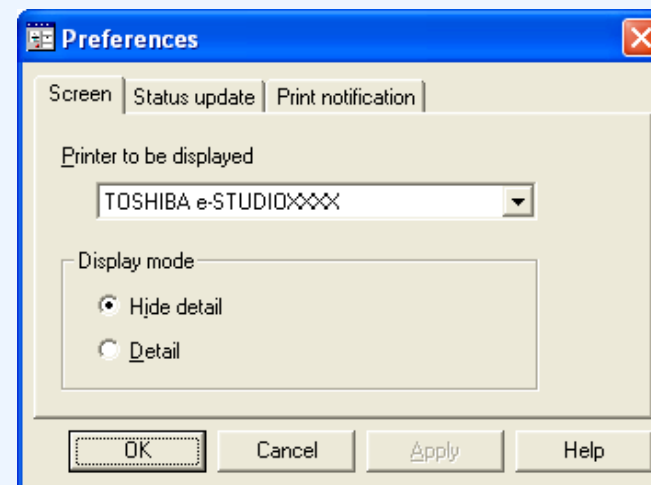
Once installed, the Printer Status Monitor normally runs in the background in Windows. If you need to change the Printer Status Monitor settings, follow the steps below.

- 1 Right-click the Printer Status Monitor icon () on the task bar, and select "Preferences" from the pop-up menu.**



If the Printer Status Monitor icon does not appear on the task bar, see "[Starting up the printer utilities](#)" to start the Printer Status Monitor.

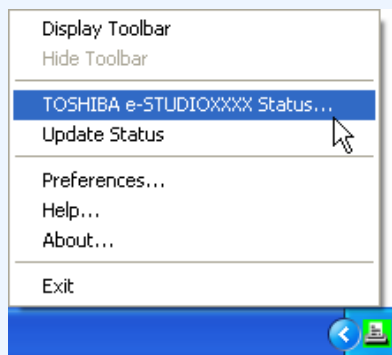
- 2 Change the Printer Status Monitor settings as desired.**
For information on the Printer Status Monitor settings, see Printer Status Monitor Help. (Click the "Help" button in the settings window.)



Checking the printer status

The Printer Status Monitor allows you to check whether or not toner and paper remain in the machine.

- 1 Right-click the Printer Status Monitor icon () on the task bar, and select "TOSHIBA e-STUDIOXXXX Status" from the pop-up menu.

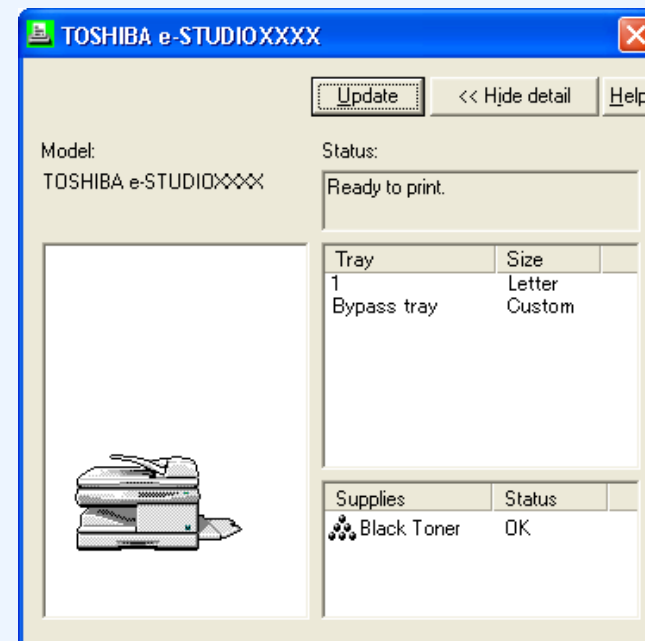
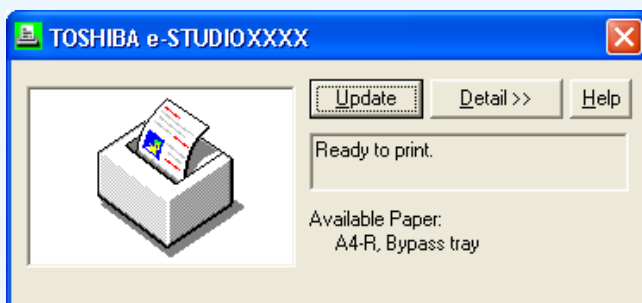


The icon turns red when printing is not possible due to a machine error or other problem.

2

Click the "Detail" button.

The window expands to show machine status details.



To collapse the window, click the "Hide detail" button.



By default, the collapsed window initially appears when "TOSHIBA e-STUDIOXXXX Status" is selected in Step 1. If desired, you can change the setting to have the expanded window initially appear.

➔ [Changing the Printer Status Monitor settings](#)

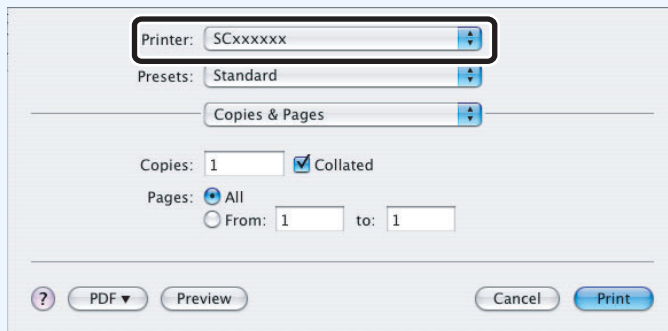
To use the machine as a printer for the Macintosh, the PS3 expansion kit (GA-1180) must be installed and the machine must be connected to a network. To install the PPD file and configure the printer driver settings, see the software setup guide.

Before printing, make sure that the correct size of paper for your document has been loaded in the machine.

1 Start the application and open the document that you wish to print.

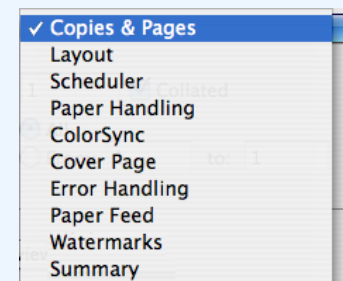
2 Select "Print" from the application's "File" menu.


3 Make sure that the correct printer is selected.



The Print window varies depending on the operating system version, the printer driver version, and the application.

4 Configure print settings.

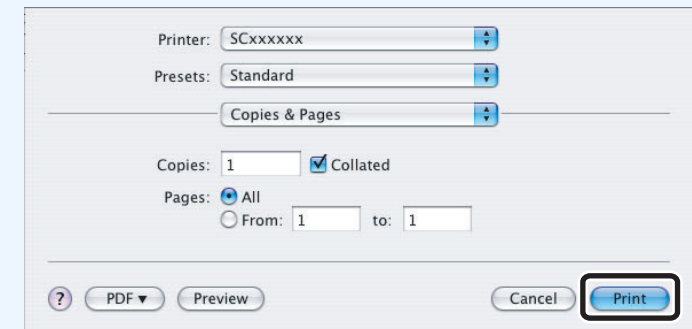


Click  next to "Copies & Pages" ("General" in Mac OS 9.0 to 9.2.2) and select the settings that you wish to configure from the pull-down menu. The corresponding setting screen will appear.



The settings vary depending on the operating system version, the printer driver version, and the application.

5 Click the "Print" button.



Printing begins.



If the tray runs out of paper during printing



Printing will automatically resume when paper is loaded in the tray.

When using the bypass tray, select printer mode with the mode select key on the machine, load paper as instructed by the message in the display, and then press the [START] key to resume printing.

When the 250-sheet paper feed unit is installed:

Note that if the "AUTO TRAY SWITCH" setting in the user programs is enabled and there is the same size of paper in another tray, the machine will automatically switch to the other tray and continue printing.

Cancel a print job

To cancel a print job that is already in progress, select printer mode with the mode select key on the machine and then press the [CLEAR] key () or the [CLEAR ALL] key (.

"CANCEL PRINT JOB?" will appear in the display. Select "YES" and press the [ENTER] key.

When "Paper Feed" is set to "Auto Select"

If "Paper Feed" is set to "Auto Select" in the Print window and the correct size of paper for a print job is not loaded in the machine, the printing procedure will vary depending on the "FORCED OUTPUT" setting in the user programs (see "USER PROGRAMS" in the Operation Manual).

When "FORCED OUTPUT" is set to "OFF"

Select printer mode with the mode select key on the machine, check the message in the display, load paper in the bypass tray, and then press the [START] key to begin printing.

When "FORCED OUTPUT" is set to "ON"

Printing takes place on the paper loaded in the machine, even though the paper size is different from the print image size.

The network expansion kit includes a built-in Web server. The Web server is accessed using a Web browser on your computer. The Web pages include both pages for users and pages for the administrator. In the user Web pages, users can monitor the machine, directly print a file specified on a computer, and select printer configuration settings. In the administrator Web pages, the administrator can configure the machine's e-mail settings, settings for print by e-mail, and passwords. Only the administrator is allowed to configure these settings.

How to access the Web page and view help

Use the following procedure to access the Web pages. [Help] can be clicked at the bottom of the menu frame to view information on the various function settings that can be configured remotely over the network from the machine's Web pages. For the settings of each function, see the explanations in Help.

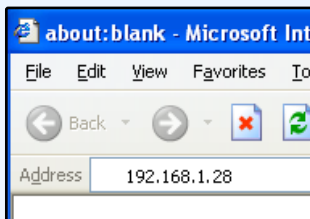
1 Open the Web browser on your computer.

Supported browsers:

Internet Explorer 5.5 or later (Windows)

Netscape Navigator 6.0 or later

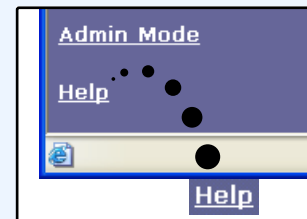
2 In the "Address" field of your Web browser, enter the IP address that has been configured in the machine.



When the connection is completed, the Web page will appear in your Web browser.

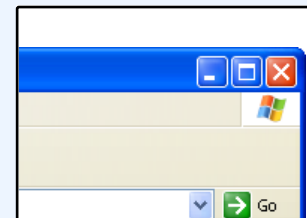
👉 [About the Web pages \(for users\)](#)


3 Click the [Help] button at the bottom of the menu frame.



To view information on a function setting, click the corresponding item in the Help screen.

4 When finished, close the Web pages.

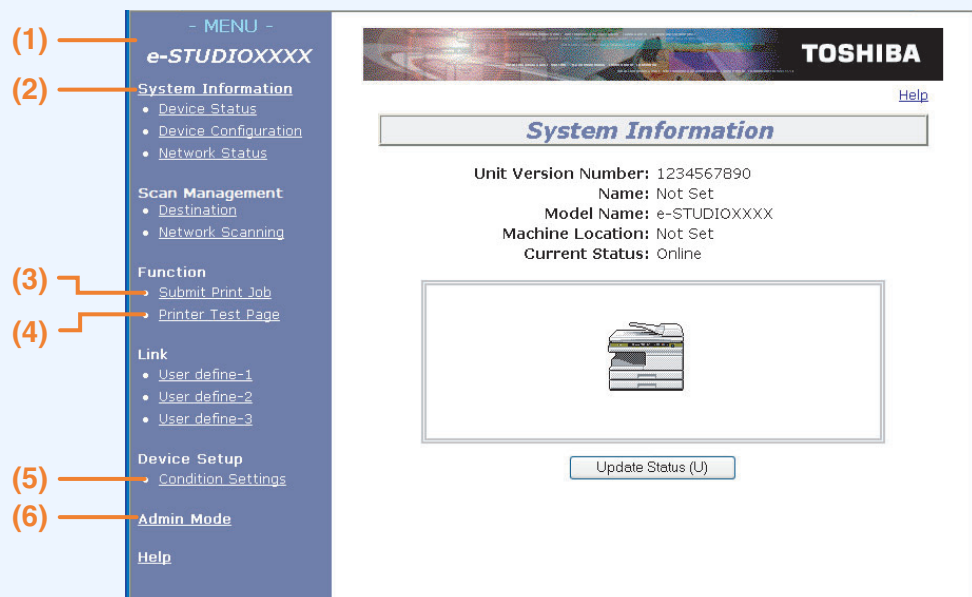


When you have finished using the Web pages, click the  (close) button in the top right corner of the page.

About the Web pages (for users)

When you access the user Web pages in the machine, the following page will appear in your browser.

A menu frame appears on the left side of the page. When you click an item in the menu, a screen appears in the right frame that allows you to configure settings for that item.



(1) Menu frame

Click a setting in the menu to configure it.

(2) System Information

Shows the current status of the machine and model name.

• Device Status

Shows the current status of the machine, paper trays, output trays, toner and other supplies, and page counts. Out of paper and other warnings appear in red.

• Device Configuration

Shows what options are installed.

• Network Status

Shows the network status. Information on "General", "TCP/IP", "NetWare", "AppleTalk", and "NetBEUI" is shown on the respective pages.

(3) Submit Print Job

A file on a computer can be printed out.

➤ [Directly printing a file in a computer](#)

(4) Printer Test Page

The "Printer Settings List" and various font lists can be printed.

(5) Condition Settings

Configure basic printer settings.

➤ [Configuring the printer condition settings](#)

(6) Admin Mode

To open the Web pages for the administrator, click here and then enter the administrator's user name and password.

➤ [About the Web pages \(for the administrator\)](#)

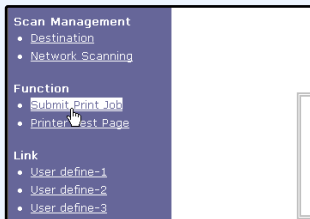
➤ [Protecting information programmed in the web page \(\[Passwords\]\)](#)

Directly printing a file in a computer

A file that can be accessed by your computer can be directly printed without using the printer driver by specifying the file's address. Any file that can be accessed by your computer can be printed by this method, including not only files on your computer but files on other computers connected to the same network.

To directly print a file by this method, click [Submit Print Job] in the menu frame of the Web page.

1 Click [Submit Print Job] in the link menu.



The "Submit Print Job" screen will appear.

2 Select the print format in "Job Detail". The settings are described in the table below.

 A screenshot of the 'Submit Print Job' web page. It shows a 'Current Status' section with 'Online' and an 'Update Status (U)' button. Below is the 'Job Detail' section with settings for 'Copies' (1), 'Paper Size' (Not Specified), 'Orientation' (Portrait), 'Binding Edge' (Left), and 'Duplex' (unchecked). There is a note about embedded printer settings and supported file types (PDF, TIFF). At the bottom, there is an 'Enter Filename' field with a 'Browse...' button and a 'Print (P)' button.

3 Click [Browse] and select the file that you wish to print.

You can also directly enter the file name (with the path).

4 Click [Print].

Printing begins.

Advanced job settings

Item	Description	Factory default setting
Copies	Set the number of copies from 1 to 999.	1
Paper Size	Select the size of paper to be used for printing.	Not Specified
Orientation	Select the printing orientation. (Portrait / Landscape)	Portrait
Binding Edge	Select the binding position for two-sided printing. (Left / Top)	Left
Duplex	To print on both sides of the paper, select this checkbox. (Only for models that support the two-sided printing.)	Not selected

The printer condition settings allow basic printer settings to be configured. The following items can be set:

- **Default Settings:** Basic settings that are mainly used when the printer driver is not used.
 - **PCL Settings:** PCL symbol set, font, line feed code, and other settings.
 - **PostScript Settings*:** Sets whether or not a PostScript error page is printed when a PostScript error occurs.
- * This setting is only appears when the PS3 expansion kit is installed.



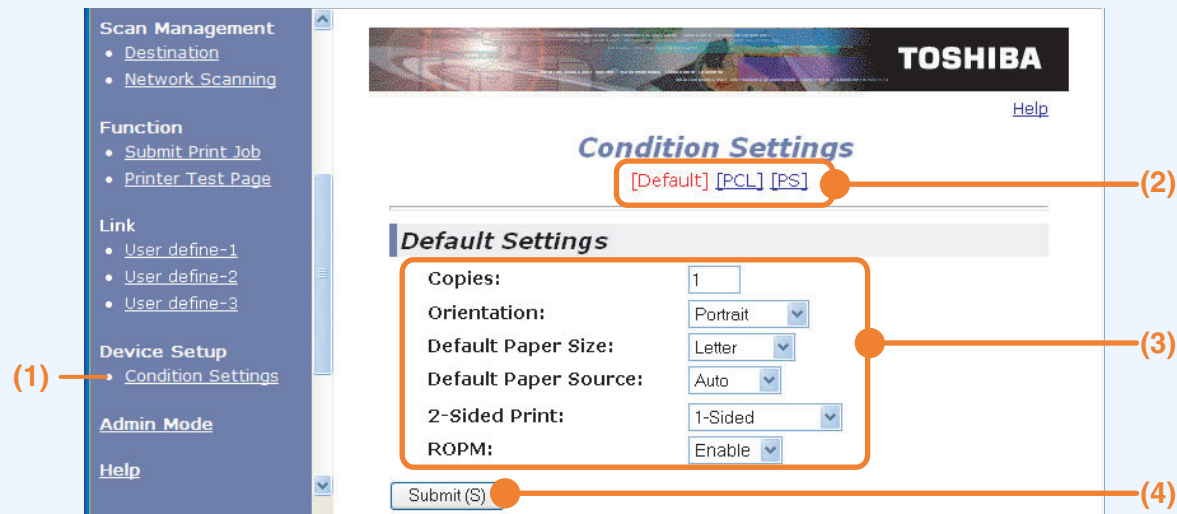
When the printer driver is used and the same settings are configured both in the printer driver and in the above screens, the settings configured in the printer driver override the settings in the above screens. If a setting is available in the printer driver, use the printer driver to configure the setting.



How to configure the settings

To display the Condition Settings screen, click [Condition Settings] in the menu frame.

For detailed explanations of the procedures for establishing settings, click [Help] in the menu frame.



(1) Condition Settings

This displays the page for configuring the printer condition settings.

(2) Default / PCL / PS

Select the type of condition settings that you wish to configure.

(3) Settings

The factory default settings are displayed.

Change the settings as desired by selecting from drop-down lists and by directly entering settings.

For information on the settings, see "[Printer condition settings](#)".

(4) Submit

Click to store the Web page settings in the machine.

Printer condition setting menu

Click on a setting to view an explanation of the setting.

Condition Settings	
Default Settings	Factory default settings
Copies	1
Orientation	Portrait
Default Paper Size	Letter
Default Paper Source	Auto
2-Sided Print	1-Sided
ROPM (Rip Once, Print Many)	Enable

Condition Settings	
PCL Settings	Factory default settings
Symbol Set	PC-8
Font	0: Courier (internal font)
Line Feed Code	CR=CR; LF=LF; FF=FF
Wide A4	Disable
PostScript Settings*	Factory default settings
Print PS Errors	Disable

* This setting is only appears when the PS3 expansion kit is installed.

Printer condition settings

Factory default settings are indicated in bold.

Default Settings

Item	Selections	Description
Copies	1 - 999	This is used to select the number of copies.
Orientation	Portrait , Landscape	This sets the orientation of the printed page. Select [Portrait] when the image is longer in the vertical direction, or [Landscape] when the image is longer in the horizontal direction.
Default Paper Size	Invoice, Letter , Foolscap, Legal	This sets the default paper size used for the printed image. Even if the set size of paper is not in any of the trays, the printed image is formed in accordance with this setting.
Default Paper Source	Auto , Tray 1, Tray 2*, Bypass (Auto)	Set the default paper tray. *Selections available depend on the trays that are installed.
2-Sided Print	1-Sided , 2-Sided (Book), 2-Sided (Tablet)	When [2-Sided (Book)] is selected, two-sided printing takes place so as to allow binding at the left side. When [2-Sided (Tablet)] is selected, two-sided printing takes place so as to allow binding at the top. (Only for models that support two-sided printing.)
ROPM (Rip Once, Print Many)	Enable , Disable	This enables the ROPM function. When enabled, multi-page print jobs are stored in memory before printing, and thus the computer does not need to repeatedly send the print data when multiple copies are printed.

PCL Settings

Item	Selections	Description
Symbol Set	Select one of 35 sets.	This specifies which country's characters (PCL symbol set) are assigned to certain of the symbols in the character code list. The factory default setting is [PC-8].
Font	Select one internal or one external font.	This specifies which PCL font to use for printing. One font can be specified from among the internal fonts and extended fonts (when the barcode font kit or the Flash ROM kit is installed). The factory default setting is [0: Courier].
Line Feed Code	CR=CR; LF=LF; FF=FF, CR=CR+LF; LF=LF; FF=FF, CR=CR; LF=CR+LF; FF=CR+FF, CR=CR+LF; LF=CR+LF; FF=CR+FF	This specifies the line break code by means of a combination of the "CR" (return) code, "LF" (line break) code, and "FF" (page break) code. The factory default setting is printing based on the transmitted code. The setting can be changed by selecting one of four combinations.
Wide A4	Enable, Disable	This setting can be enabled to print 80 lines on A4 size paper with each line 10CPI font (English characters). When the setting is disabled (a checkmark does not appear), each line is 78 characters long.

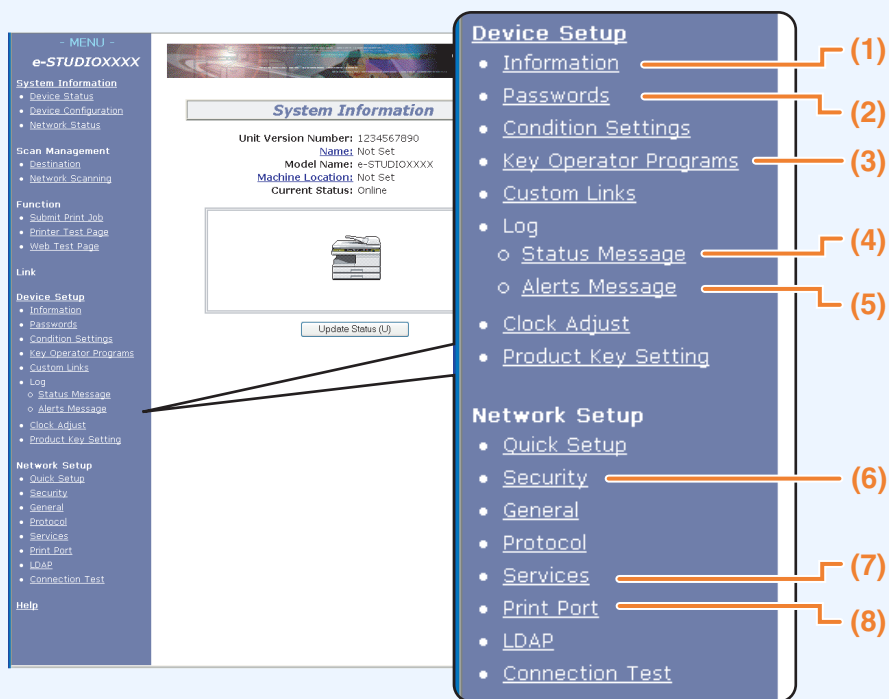
PostScript Settings

The "PostScript Settings" are only effective when the PS3 expansion kit is installed.

Item	Selections	Description
Print PS Errors	Enable, Disable	When this setting is enabled, an error description is printed each time a PostScript error occurs.

About the Web pages (for the administrator)

In addition to the menus that appear for users, other menus that can only be used by the administrator appear in the administrator Web pages. A menu frame appears on the left side of the page. When you click an item in the menu, a screen appears in the right frame that allows you to configure settings for that item. Settings that can only be configured by the administrator are explained here.



(1) Information

Configure machine identification information for the status & alert E-mail function.

👉 [Information setup](#)

(2) Passwords

To protect the Web site, the system administrator can establish passwords. Enter a password that you would like to establish and click the [Submit] button.

One password can be established for the administrator and one password can be established for users.

👉 [Protecting information programmed in the web page \(\[Passwords\]\)](#)

(3) Key Operator Programs

Setting changes can be prohibited and interface settings can be configured.

👉 [Key operator programs](#)

(4) Status Message

Configure parameters required for sending status messages, such as destination addresses and time schedules.

👉 [Status message setup](#)

(5) Alerts Message

Store destination addresses for alert messages.

👉 [Alerts message setup](#)

(6) Security

Unused ports can be disabled for greater security and port numbers can be changed.

(7) Services

Configure information concerning the e-mail system.

👉 [SMTP setup](#)

(8) Print Port

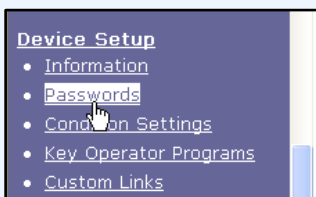
Configure settings for e-mail print.

👉 [Setting up the E-mail print function](#)

Protecting information programmed in the web page ([Passwords])

Passwords can be set (click [Passwords] in the menu frame) to restrict Web page access and protect settings. The administrator must change the password from the factory default setting. The administrator must also take care to remember the new password. The next time the Web pages are accessed, the new password must be entered. A password can be set for the administrator and a password can be set for users.

1 Click [Passwords] in the menu frame.



2 Enter the current password in "Admin Password".

When establishing a password for the first time, enter "TOSHIBA" in "Admin Password".



Be sure to enter "TOSHIBA" in upper case (passwords are case sensitive).

3 Enter passwords in "User Password" and "Admin Password".

- A maximum of 7 characters and/or numbers can be entered for each password (passwords are case sensitive).
- Be sure to enter the same password in "Confirm Password" as you did in "New Password".

4 When you have finished entering all items, click [Submit].

The entered password is stored.

After setting the password, turn the machine power off and then back on.



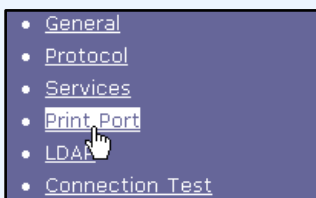
When prompted to enter a password, a user should enter "user" and an administrator should enter "admin" in "User Name". In "Password", the respective password for the entered user name should be entered. For more information, click [Help] in the upper right-hand corner of the window.

An e-mail account can be set up for the machine. When this is done, the machine will periodically check the e-mail server for e-mail and automatically print out any file attachments it receives. This provides a means for printing a file from a computer that does not have the printer driver installed, as the user can simply send the file to the machine as an e-mail attachment.

Setting up the E-mail print function

To use the e-mail print function, the machine must have an e-mail account.

1 Click [Print Port] in the menu frame.



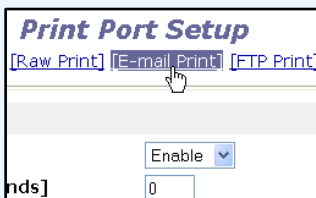
The "Print Port Setup" page appears.

3 Enter the information regarding the e-mail environment.

For detailed information, Click [Help] in the upper right-hand corner of the window.

4 Click [Submit] to store the entered information.

2 Click [E-mail print].



Using the E-mail print function

To use the e-mail print function, attach the file that you wish to print to an e-mail message and send the e-mail to the machine's e-mail address.

The machine can print the following file types:

PCLXL, PCL5e, PS, PDF, and TIFF, with file extensions pcl, ps, pdf, tiff, and tif

Control commands can be entered in the message of the e-mail to specify the number of copies and print format. Commands are entered in the format "command name = value".

The following control commands can be entered:

Function	Command name	Value	Entry example
Copies	COPIES	1-999	COPIES=2
Two-sided print	DUPLEX	OFF, TOP, LEFT	DUPLEX=LEFT
File type	LANGUAGE	AUTO, PCL, PCLXL, POSTSCRIPT, PDF, TIFF	LANGUAGE=TIFF
Paper	PAPER	Name of available paper (LETTER, etc.)	PAPER=A4



- Enter the commands in Plain Text format. If entered in Rich Text format (HTML), the commands will have no effect.
- To receive a list of the control commands, enter the command "Config" in the e-mail message.
- If an e-mail is sent with nothing entered in the message, printing will take place according to the settings in the condition settings menu in the Web page "[Default Settings](#)".
- To print PS and PDF files, the PS3 expansion kit is required.
- An encrypted PDF file cannot be printed.
- Only enter a "File type" when you are specifying a page-description language. Normally there is no need to enter a file type.

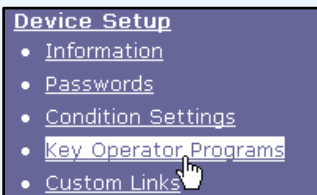


The key operator programs are used to prohibit changes to the [Condition Settings] and to configure interface settings.

- [Default Settings](#): Select the setting for which you wish to prohibit changes.
- [Interface settings](#): Enable monitoring of data sent to the network port and set restrictions.

Configuring a setting in the key operator programs

- 1 Click [Key operator programs] in the menu frame.



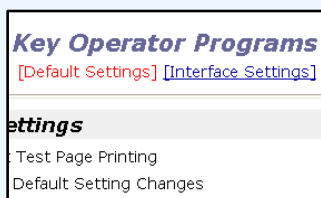
The "Default Settings" screen of the [Key operator programs] will appear. If you wish to select a setting in the "Default Settings" screen, go to step 3.

- 3 Make a selection for the setting in the screen that appears.

See [Key operator programs](#) for descriptions of the settings.

- 4 Click [Submit] to store the entered information.

- 2 Click the desired setting.



Key operator programs

When "YES, NO" appears in the "Settings" column, "YES" is selected when a checkmark appears in the checkbox of the item, and "NO" is selected when checkmark does not appear.

Default settings

Item	Settings	Description
Prohibit Test Page Printing	YES, NO	This setting is used to prohibit printing of a printer test page.
Disable Default Setting Changes	YES, NO	This setting is used to prohibit changes to the default condition settings.
Disabling of Clock Adjustment	YES, NO	This setting is used to prohibit changes to the date and time settings. This item does not appear when the fax option is installed.

Interface settings

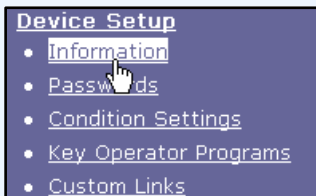
Item	Settings	Description
Hexadecimal Dump Mode	YES, NO	This program is used to print out the print data from the computer in hexadecimal and in the corresponding text characters (based on ASCII code). This allows you to check whether or not print data is being correctly sent from the computer.
I/O Timeout	1- 60 - 999 (sec)	During reception of a print job, if remaining data is not received after the time set here elapses, the port connection is broken and the next print job is begun.
Emulation Switching	Auto* , PostScript*, PCL	Select the printer language. When [Auto] is selected, the language is automatically selected from the data sent to the printer. Unless errors occur frequently, do not change the setting from [Auto] to another setting. *Only when the PS3 expansion kit is installed.
Port Switching Method	Switch at End of Job , Switch after I/O Timeout	Select the method for switching network ports.

These functions send information on machine use (print count, copy count, etc.) and error conditions (paper misfeed, out of paper, out of toner, etc.) via e-mail to the administrator of the machine or the dealer.

Information setup

Machine identification information for the status and alert e-mail functions is configured in the "Information Setup" screen. The entered information will be included in status and alert e-mail messages.

1 Click [Information] in the menu frame.



The "Information Setup" screen will appear.

2 Enter the machine information.

For detailed information, click the [Help] button in the upper right-hand corner of the window.

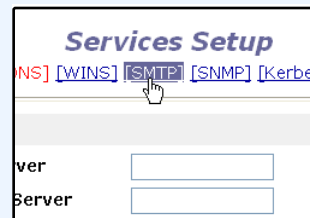
3 Click [Submit] to store the entered information.

SMTP setup

The Status and alert e-mail functions use SMTP (Simple Mail Transport Protocol) to send e-mail. The following procedure is used to set up the e-mail environment. This must be done by the system administrator or other person familiar with the network.

1 Click [Services] in the menu frame. The "Services Setup" screen will appear.

2 Click [SMTP].



3 Enter the information required to set up the e-mail environment.

For detailed information, click the [Help] button in the upper right-hand corner of the window.

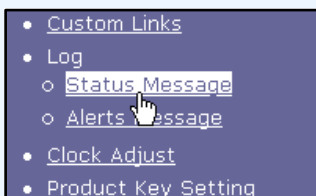
4 Click [Submit] to store the entered information.

Status message setup

Use the status message function to send the current counter information, including the copy count, print count, and total output count, basis on the specified schedule. The destinations can be set for administrators and dealers respectively.

To set up the status message, follow these steps.

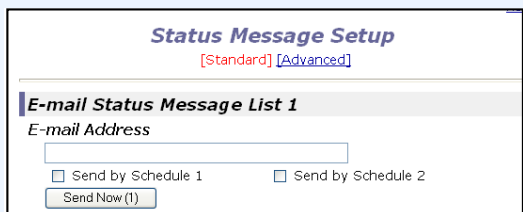
1 Click [Status Message] in the menu frame.



The "Status Message Setup" screen will appear.

2 Enter the required information, including the destination addresses and time schedule.

For detailed information, click the [Help] button in the upper right-hand corner of the window.

A screenshot of the 'Status Message Setup' web form. The title is 'Status Message Setup' with sub-links '[Standard]' and '[Advanced]'. Below the title is a section 'E-mail Status Message List 1' containing an 'E-mail Address' input field, two checkboxes for 'Send by Schedule 1' and 'Send by Schedule 2', and a 'Send Now (1)' button.

3 Click [Submit] to store the entered information.

When the E-mail Status settings are completed, printer count information will be sent periodically by e-mail to the specified e-mail addresses.



If you quit the browser before clicking [Submit], the settings will be canceled. To send printer information immediately to the specified e-mail addresses, click [Send Now].

Alerts message setup

Use the alert message function to send alert information, such as empty toner and paper and trouble including paper misfeeds, to specified destinations when such problems occur. The destinations can be set for administrators and dealers respectively.

To set up the alert message, follow the procedure below.

1 Click [Alerts Message] in the menu frame.



The "Alerts Message Setup" screen will appear.

2 Enter the destination addresses.

For detailed information, click the [Help] button in the upper right-hand corner of the window.

 A screenshot of the "Alerts Message Setup" web page. It has a title bar with "Alerts Message Setup" and a "Help" button. Below the title bar, there are two sections: "E-mail Alert Message List 1" and "E-mail Alert Message List 2". Each section has an "E-mail Address" label and an empty text input field.

3 Click [Submit] to store the entered information.

If these parameters are set, event information for the printer will be transmitted to the specified addresses via E-mail each time a specified event occurs. The meaning of each event item is shown below.

(Example)

Paper Jam: A paper misfeed has occurred.

Toner Low: Toner is low.

Toner Empty: Toner must be added.

Paper Empty: Paper must be loaded.



If you quit the browser before clicking [Submit], the settings will be canceled.

This chapter explains how to solve network connection problems. For information on paper, removing misfeeds, and replacing the toner cartridge, see the operation manual for the machine.

Check the connections

■ Is the LAN cable disconnected?

Make sure that the LAN cable is firmly inserted in the connectors on the network expansion kit and your computer. For information on connecting the LAN cable, see software setup guide for network printer.

■ Is the machine configured for use on the same network as the computer?

The machine cannot be used if it is not connected to the same network as the computer, or if it is not configured for use on the network.

For more information, consult your network administrator.

Points to check in Windows

■ Are you using a port that was created with Standard TCP/IP Port?

If you are using a port created using Standard TCP/IP Port in Windows 2000/XP/Server 2003/Vista, printing may not take place correctly if "SNMP Status Enabled" is selected in the port settings of the printer driver. Open the printer driver properties and click the "Configure Port" button on the "Ports" tab. In the window that appears, make sure the "SNMP Status Enabled" checkbox is not selected .

Points to check on the Macintosh

■ Is AppleTalk enabled?

In Mac OS X, click "Network" in "System Preferences" and select Ethernet in "Show". Click the "AppleTalk" tab and make sure that "Make AppleTalk Active" is selected.

In Mac OS 9.0 to 9.2.2, open the "Chooser" from the Apple menu and make sure that "Active" is selected. Printing is not possible if "Active" is not selected.

■ Is "Ethernet" selected for the "Connect via" of AppleTalk? (When using Mac OS 9.0 to 9.2.2.)

Open "AppleTalk" from the "Control Panels" and make sure that "Ethernet" is selected in the "Connect via" menu. Printing is not possible if "Ethernet" is not selected.



Removing the software

In the event that you need to remove the printer driver or utilities, follow these steps:

Windows

1 Click the "start" button, and then click "Control Panel".

On Windows 98/Me/2000, click the "Start" button, select "Settings", and then click "Control Panel".

2 Click "Add or Remove Programs".

- On Windows Vista, click the "Uninstall a program".
- On Windows 98/Me/2000, double-click the "Add/Remove Programs" icon.

3 Select the driver or utility that you wish to remove from the list, and click the appropriate button to remove it.

For more information, refer to your operating manual or to the help files for your operating system.

4 Restart your computer.

Macintosh (Mac OS 9.0 to 9.2.2)

1 Insert the "Software CD-ROM" (Disc 2) into your CD-ROM drive.

2 Double-click the CD-ROM icon (📀) on the desktop and double-click the "Mac OS" folder.

3 Double-click the "Installer" icon (📦).

4 Select "Remove" from the Install menu and then click the "Remove" button.



There is no remove tool for Mac OS X. The PPD file for Mac OS X has been copied to the following folder in the startup disk:

[Library] - [Printers] - [PPDs] - [Contents] - [Resources] - [En.lproj] folder

 When reinstalling the software, install it correctly as explained in software setup guide for the network expansion kit.



Printer specifications

Printing speed	Max. 20 ppm (when printing on letter size paper)
Resolution	600 dpi / 300 dpi*1
Network expansion kit memory*2	Standard memory: 64 MB Additional memory slot: 1 slot (a 128 MB or 256 MB of additional memory module (144-pin SDRAM SODIMM) can be installed)
Emulation	PCL5e, PCL6, PS3 (PostScript 3)*3
Installed fonts	PCL6/PCL5e compatible: 80 outline fonts and 1 bitmap font PostScript 3 compatible*3: 136 outline fonts
Interface	10Base-T/100Base-TX Ethernet

*1 300 dpi can only be selected when using the PCL6 or PCL5e printer driver.

*2 For information on machine memory, see the manual for the machine.

*3 Available only if the PS3 expansion kit (GA-1180) is installed.



As a part of our policy of continuous improvement, TOSHIBA reserves the right to make design and specification changes for product improvement without prior notice. The performance specification figures indicated are nominal values of production units. There may be some deviations from these values in individual units.



Function		PCL6	PCL5e	PS	Windows PPD	Macintosh PPD	
Frequently used functions	Number of copies	1 to 999	1 to 999	1 to 999	1 to 999	1 to 999	
	Printing orientation	Yes	Yes	Yes	Yes	Yes	
	Two-sided printing	Yes	Yes	Yes	Yes	Yes	
	Binding Style	Book/Tablet	Book/Tablet	Book/Tablet	Long Side / Short Side	Long Side / Short Side	
	Pamphlet Style	Yes	Yes	Yes	No ^{*1}	No	
	N-up	Number	2, 4, 6, 8, 16	2, 4, 6, 8, 16	2, 4, 6, 8, 16	2, 4	2, 4, 6, 9, 16
		Order	Selectable	Fixed	Selectable	Fixed	Selectable
Border		Yes/No	Yes/No	Yes/No	Yes/No	Selectable	
Paper	Paper Size	Yes	Yes	Yes	Yes	Yes	
	Custom Paper Size	1 size	1 size	1 size	3 sizes	1 size ^{*2}	
	Source Selection	Yes	Yes	Yes	Yes	Yes	
	Cover Settings	Yes	Yes	Yes	No	Yes	

(continued)

*1 Pamphlet style printing is available in Windows 2000/XP/Server 2003/Vista.

*2 Cannot be used in Mac OS X v10.1.5.



Function		PCL6	PCL5e	PS	Windows PPD	Macintosh PPD
Graphics	Resolution	600/300dpi	600/300dpi	600dpi	600dpi	600dpi
	Halftone	No	No	Yes	No	No
	Graphics Mode	Yes	Yes	No	No	No
	Zoom	No	No	Yes	Yes	Yes
	Mirror Image	No	No	Yes	Yes	Yes ^{*3}
	Negative Image	No	No	Yes	Yes	Yes ^{*3}
	Fit to Page	Yes	Yes	Yes	No	Yes ^{*4}
Fonts	Resident fonts	80 fonts	80 fonts	136 fonts	136 fonts	35 fonts
	Selectable download fonts	bitmap, TrueType, Graphics	bitmap, TrueType, Graphics	bitmap, Type 1, TrueType	bitmap, Type 1, TrueType	No ^{*5}

(continued)

*3 Cannot be used in Mac OS X.

*4 Can only be used in Mac OS X v10.4.

*5 Type 1 and TrueType can be selected in some versions of LaserWriter.



Function		PCL6	PCL5e	PS	Windows PPD	Macintosh PPD
Other functions	Auto configuration Settings	Yes	Yes	Yes	No	Yes ^{*3}
	ROPM	Yes	Yes	Yes	Yes	Yes
	Overlay	Yes	Yes	Yes	No	No
	Watermark	Yes	Yes	Yes	Yes	Yes
	Job Compression	No	No	Yes	No	No
	Bitmap Compression	No	No	Yes	No	No

*3 Cannot be used in Mac OS X.

Numerics

"2-Up Pamphlet"..... 11

A

About the Web pages

For users..... 24

For the administrator..... 32

Accessing Web pages..... 23

Alerts message setup 40

B

Basic printing

Macintosh 21

Windows 6

"Border" 12

C

Cancel a print job

Macintosh 22

Windows 7

Check the connections..... 41

Condition settings 28

Configuring the printer condition settings 28

D

Default Settings..... 29

Directly printing a file in a computer..... 25

"Document Style" 10

E

E-mail print function 34

F

"Fit to Page" 13

H

"Help" button..... 9

How to configure the settings 27

How to use the online manual 3

I

"Image Orientation"..... 14

Information setup 38

Introduction 2

K

Key operator programs 36

N

"N-Up Printing"..... 12

O

Opening the printer driver 8

"Order"..... 12

P

Pamphlet style 11

Passwords 33

PCL Settings..... 30

Points to check on the Macintosh 41

PostScript Settings 31

[Print Port]..... 34

Printer Administration Utility..... 17

Printer condition settings 29

Printer driver settings..... 9

Printer driver specifications 44

Printer specifications 43

Printer Status Monitor..... 17

PRINTER UTILITIES 17

Printing a watermark 15

PRINTING FROM MACINTOSH 21

PRINTING FROM WINDOWS..... 6

R

Removing the software 42

"Rotate 180 degrees" 14

S

Settings..... 9

SMTP setup..... 38

SPECIFICATIONS..... 43

Status message setup 39

[Submit Print Job] 25

T

Text To Black..... 16

"Tiled Pamphlet" 11

Troubleshooting 41

V

Vector To Black..... 16

W

"Watermark" 15

WEB FUNCTIONS IN THE MACHINE 23



R080520F8900-TTEC
OME08009600

Free Manuals Download Website

<http://myh66.com>

<http://usermanuals.us>

<http://www.somanuals.com>

<http://www.4manuals.cc>

<http://www.manual-lib.com>

<http://www.404manual.com>

<http://www.luxmanual.com>

<http://aubethermostatmanual.com>

Golf course search by state

<http://golfingnear.com>

Email search by domain

<http://emailbydomain.com>

Auto manuals search

<http://auto.somanuals.com>

TV manuals search

<http://tv.somanuals.com>