

HA100

User Guide

Bluetooth Music Receiver

Contents

Chapter 1. Introduction	1
1.1 Product Overview.....	1
1.2 Main Features.....	1
1.3 Panel Layout.....	2
1.3.1 Top Panel.....	2
1.3.2 Back Panel.....	2
Chapter 2. Quick Setup	3
Appendix: FAQ	5

Chapter 1. Introduction

1.1 Product Overview

What This Product Does

The Bluetooth Music Receiver provides your stereo with Bluetooth connectivity, enabling you to stream music wirelessly from your smartphone or tablet. You can just sit back and relax as you listen to and control your favorite playlists away from your stereo.

Easy Pair

If your device has NFC functionality, you can simply 'tap' it with the music receiver or the NFC Tag to connect instantly. Alternatively, you can activate your device's Bluetooth and pair it with the music receiver manually. What's more, the receiver remembers up to 8 devices for automatic pairing.

Long Distance

Streams music from up to 20 meters (66 feet) away from the speaker, within direct line of sight.

Broad Compatibility

Bluetooth 4.1, compatible with all A2DP stereo Bluetooth devices. Works with any stereo supporting 3.5mm or RCA jacks.

1.2 Main Features

- Stream music wirelessly from your smartphone/tablet to any stereo/stand-alone speaker via Bluetooth
- Connect with your Bluetooth or NFC-enabled device, using the music receiver or NFC Tag
- Connects to any stereo supporting 3.5mm or RCA jacks
- Transmits up to 20 meters (66 feet) away, within direct line of sight
- Bluetooth 4.1, compatible with all A2DP stereo Bluetooth devices

1.3 Panel Layout

1.3.1 Top Panel





The music receiver's LED is located on the top panel.

Name	Status	Indication
Status LED	On	White: The music receiver is powered on and ready to be paired. Blue: A smart device is connected.
	Off	The music receiver is powered off.

1.3.2 Back Panel



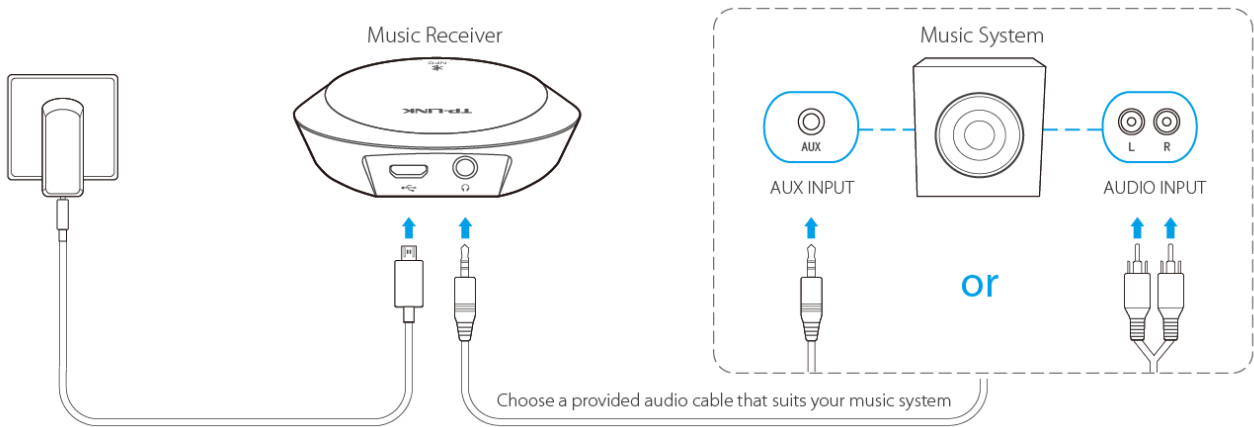
The music receiver's ports are located on the back panel.

Item	Description
	Used to connect the music receiver to a power socket via the provided power cable.
	Used to connect the music receiver to your music system via a provided audio cable.

Chapter 2. Quick Setup

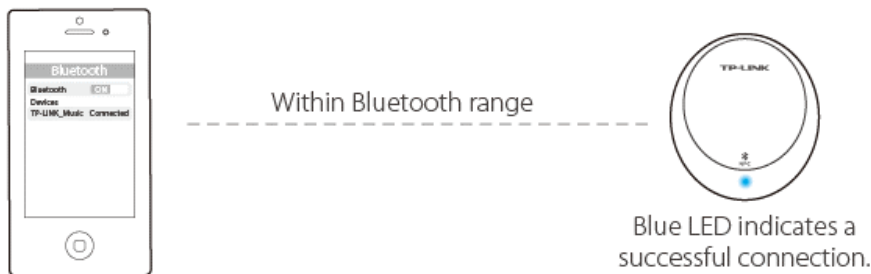
1. Connect

Connect your music receiver as shown in the figure below.



2. Pair

On your smart device, turn on Bluetooth and pair **TP-LINK_Music**.



Now you can play and enjoy music!

Usage Tips:

1. Tapping the paired music receiver will disconnect or reconnect it.
2. To pair a new smart device, disconnect the current one first.
3. You can connect the music receiver to two previously paired devices, but it can only play music from one device at a time.
4. The music receiver will be disconnected if your device's Bluetooth signal has been blocked or out of range (66 feet/20 meters) for more than 5 minutes.

NFC (Near Field Communication) Pairing

If you have an NFC-equipped device, you can quickly pair the music receiver with a simple tap.

1. Disconnect the existing paired device.
2. With NFC enabled on your device, tap the music receiver or NFC Tag until a pairing request pops up.
3. Confirm the pairing request.



NFC Tag: Used for NFC-pairing. You can stick it on an object within Bluetooth range of the music receiver.

Usage Tips:

1. Tapping the paired music receiver will disconnect or reconnect it.
2. For an NFC-equipped device (such as iPhone 6) that does not support NFC-pairing, you can pair it via Bluetooth.

Appendix: FAQ

What can I do if my music is not coming out from my music system?

- 1) Make sure your smart device and the music receiver are successfully connected and within Bluetooth range of each other.
- 2) Make sure your music system and the music receiver are correctly connected via a provided audio cable, and both are powered on.
- 3) Make sure the volume on your music player and music system are at an audible level.

COPYRIGHT & TRADEMARKS

Specifications are subject to change without notice. **TP-LINK**® is a registered trademark of TP-LINK TECHNOLOGIES CO., LTD. Other brands and product names are trademarks or registered trademarks of their respective holders.

No part of the specifications may be reproduced in any form or by any means or used to make any derivative such as translation, transformation, or adaptation without permission from TP-LINK TECHNOLOGIES CO., LTD. Copyright © 2015 TP-LINK TECHNOLOGIES CO., LTD. All rights reserved.

<http://www.tp-link.com>

FCC STATEMENT



This equipment has been tested and found to comply with the limits for a Class B digital device, pursuant to part 15 of the FCC Rules. These limits are designed to provide reasonable protection against harmful interference in a residential installation. This equipment generates, uses and can radiate radio frequency energy and, if not installed and used in accordance with the instructions, may cause harmful interference to radio communications. However, there is no guarantee that interference will not occur in a particular installation. If this equipment does cause harmful interference to radio or television reception, which can be determined by turning the equipment off and on, the user is encouraged to try to correct the interference by one or more of the following measures:

- Reorient or relocate the receiving antenna.
- Increase the separation between the equipment and receiver.
- Connect the equipment into an outlet on a circuit different from that to which the receiver is connected.
- Consult the dealer or an experienced radio/ TV technician for help.

This device complies with part 15 of the FCC Rules. Operation is subject to the following two conditions:

- 1) This device may not cause harmful interference.
- 2) This device must accept any interference received, including interference that may cause undesired operation.

Any changes or modifications not expressly approved by the party responsible for compliance could void the user's authority to operate the equipment.

Note: The manufacturer is not responsible for any radio or TV interference caused by unauthorized modifications to this equipment. Such modifications could void the user's authority to operate the equipment.

FCC RF Radiation Exposure Statement

This equipment complies with FCC RF radiation exposure limits set forth for an uncontrolled environment. This device and its antenna must not be co-located or operating in conjunction with any other antenna or transmitter.

"To comply with FCC RF exposure compliance requirements, this grant is applicable to only Mobile Configurations. The antennas used for this transmitter must be installed to provide a separation distance of at least 20 cm from all persons and must not be co-located or operating in conjunction with any other antenna or transmitter."

CE Mark Warning



This is a class B product. In a domestic environment, this product may cause radio interference, in which case the user may be required to take adequate measures.

Canadian Compliance Statement

This device complies with Industry Canada license-exempt RSS standard(s). Operation is subject to the following two conditions:

- (1) This device may not cause interference, and
- (2) This device must accept any interference, including interference that may cause undesired operation of the device.

Cet appareil est conforme aux norms CNR exemptes de licence d'Industrie Canada. Le fonctionnement est soumis aux deux conditions suivantes:

- (1) cet appareil ne doit pas provoquer d'interférences et
- (2) cet appareil doit accepter toute interférence, y compris celles susceptibles de provoquer un fonctionnement non souhaité de l'appareil.

Industry Canada Statement

Complies with the Canadian ICES-003 Class B specifications.

Cet appareil numérique de la classe B est conforme à la norme NMB-003 du Canada.

This device complies with RSS 210 of Industry Canada. This Class B device meets all the requirements of the Canadian interference-causing equipment regulations.

Cet appareil numérique de la Classe B respecte toutes les exigences du Règlement sur le matériel brouilleur du Canada.

Korea Warning Statements:

당해 무선설비는 운용중 전파혼신 가능성이 있음.

NCC Notice& BSMI Notice:

注意!

依據 低功率電波輻射性電機管理辦法

第十二條 經型式認證合格之低功率射頻電機，非經許可，公司、商號或使用者均不得擅自變更頻率、加大功率或變更原設計之特性或功能。

第十四條 低功率射頻電機之使用不得影響飛航安全及干擾合法通行；經發現有干擾現象時，應立即停用，並改善至無干擾時方得繼續使用。前項合法通信，指依電信規定作業之無線電信。低功率射頻電機需忍受合法通信或工業、科學以及醫療用電波輻射性電機設備之干擾。

減少電磁波影響，請妥適使用。

安全諮詢及注意事項

- 請使用原裝電源供應器或只能按照本產品注明的電源類型使用本產品。

- 清潔本產品之前請先拔掉電源線。請勿使用液體、噴霧清潔劑或濕布進行清潔。
- 注意防潮，請勿將水或其他液體潑灑到本產品上。
- 插槽與開口供通風使用，以確保本產品的操作可靠並防止過熱，請勿堵塞或覆蓋開口。
- 請勿將本產品置放於靠近熱源的地方。除非有正常的通風，否則不可放在密閉位置中。
- 請不要私自打開機殼，不要嘗試自行維修本產品，請由授權的專業人士進行此項工作。



Продукт сертифіковано згідно с правилами системи УкрСЕПРО на відповідність вимогам нормативних документів та вимогам, що передбачені чинними законодавчими актами України.



Safety Information

- When product has power button, the power button is one of the way to shut off the product; when there is no power button, the only way to completely shut off power is to disconnect the product or the power adapter from the power source.
- Don't disassemble the product, or make repairs yourself. You run the risk of electric shock and voiding the limited warranty. If you need service, please contact us.
- Avoid water and wet locations.

This product can be used in the following countries:

AT	BG	BY	CA	CZ	DE	DK	EE
ES	FI	FR	GB	GR	HU	IE	IT
LT	LV	MT	NL	NO	PL	PT	RO
RU	SE	SK	TR	UA	US		

DECLARATION OF CONFORMITY

For the following equipment:

Product Description: **Bluetooth Music Receiver**

Model No.: **HA100**

Trademark: **TP-LINK**

We declare under our own responsibility that the above products satisfy all the technical regulations applicable to the product within the scope of Council Directives:

Directives 1999/5/EC, 2004/108/EC

The above product is in conformity with the following standards or other normative documents

EN55022:2010+AC:2011, CLASS B

EN55024:2010

EN 300 328 V1.8.1: 2012-06

EN 301 489-1 V1.9.2:2011&EN 301 489-3 V2.9.1& EN 301 489-17 V2.2.1:2012

EN60950-1:2006+A11:2009+A1:2010+A12:2011+A2:2013

The product carries the CE Mark:

CE 1588

Person responsible for making this declaration:



Yang Hongliang

Product Manager of International Business

Date of issue: 2015

TP-LINK TECHNOLOGIES CO., LTD

Building 24 (floors 1, 3, 4, 5), and 28 (floors 1-4) Central Science and Technology Park, Shennan Rd, Nanshan, Shenzhen, China

Free Manuals Download Website

<http://myh66.com>

<http://usermanuals.us>

<http://www.somanuals.com>

<http://www.4manuals.cc>

<http://www.manual-lib.com>

<http://www.404manual.com>

<http://www.luxmanual.com>

<http://aubethermostatmanual.com>

Golf course search by state

<http://golfingnear.com>

Email search by domain

<http://emailbydomain.com>

Auto manuals search

<http://auto.somanuals.com>

TV manuals search

<http://tv.somanuals.com>