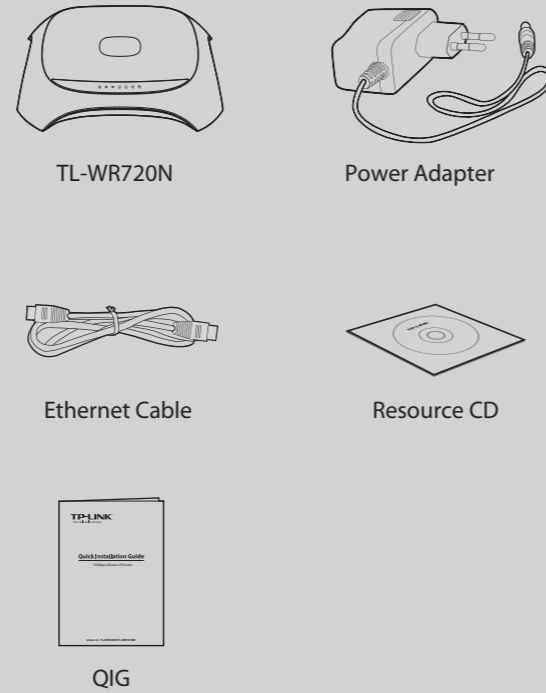


## Quick Installation Guide

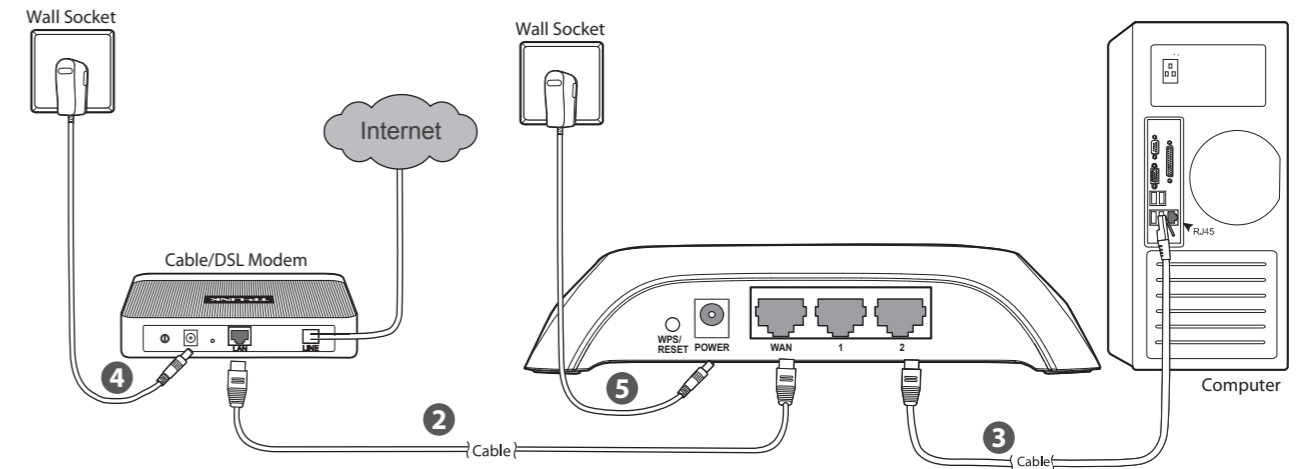
150Mbps Wireless N Router

MODEL NO. TL-WR720N

## Package Contents



## 1 Hardware Connection

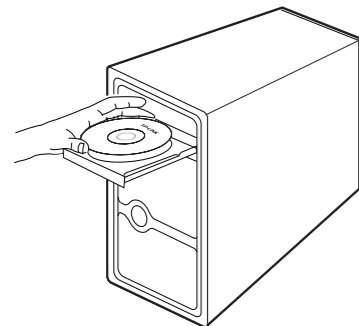


- 1 Power off your modem.
- 2 Connect the **WAN** port on your Router to the modem's **LAN** port with an Ethernet cable.
- 3 Connect your computer to one of the LAN ports labeled **1~2** on the Router with an Ethernet cable.
- 4 Power on the modem and wait for one minute .
- 5 Plug the provided Power Adapter into the **POWER** jack on the back of the Router and the other end to a standard electrical wall socket.

## 2 Configuration for Windows with Setup Wizard

**Note** If you are using a MAC/Linux or a Windows computer without a CD drive to run the mini CD, please refer to **Appendix 1** for configuration.

- 1 Insert the TP-LINK Resource CD into the CD-ROM drive.



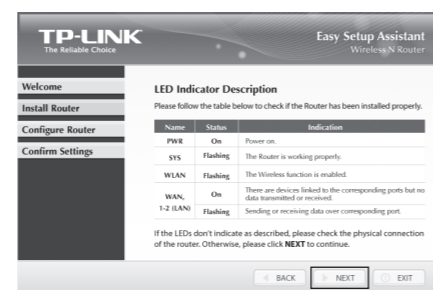
- 2 Select **TL-WR720N** and click **Easy Setup Assistant**.



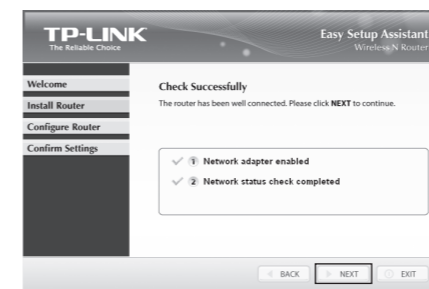
- 3 Select your language from the drop-down menu. Click **START** and the **Easy Setup Assistant** will guide you step by step to set up the Router.



- 4 After confirming the hardware connection and the status of LEDs, please click **NEXT** to continue.



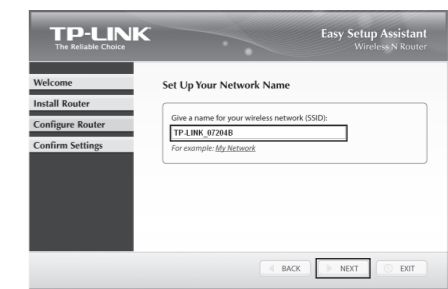
- 5 After the connectivity is checked successfully, please click **NEXT**.



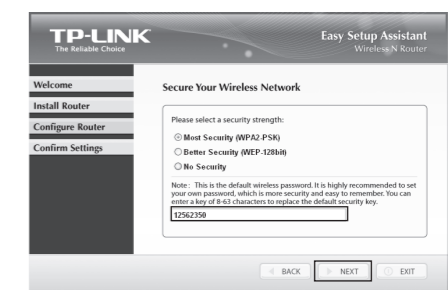
- 6 Select the WAN connection type your ISP provides and click **NEXT**. Here we take **Dynamic IP** for example.



- 7 You can rename your wireless network on this page. The default wireless name is TP-LINK\_XXXXXX. Click **NEXT** to continue.



- 8 You are recommended to select **Most Security (WPA2-PSK)** to secure your wireless network.



**Note** The Router is pre-encrypted. The default wireless password, the same as the PIN code, is printed on the label at the bottom of the Router.

(To be continued)

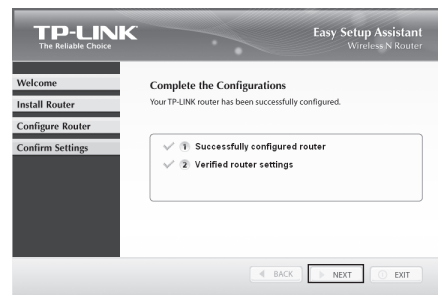
## 2 Configuration for Windows with Setup Wizard (continued)

- 9 After confirming the configurations, click **NEXT** to continue.

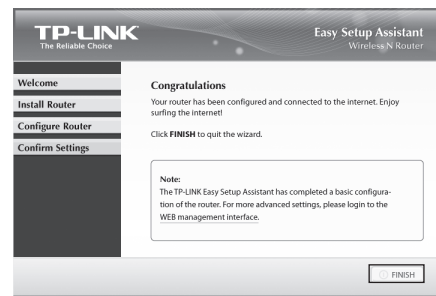


**Note** You can save these settings in a text file on your desktop. If you forget the Network Security Key, you can check the **Router Settings.txt**.

- 10 After the configuration is completed successfully, please click **NEXT**.

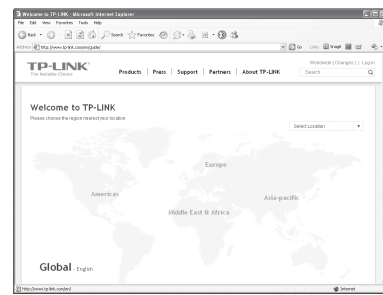


- 11 Click **FINISH** to close the wizard.



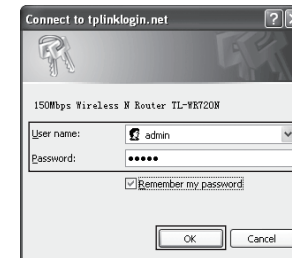
**Note** You can click **WEB management interface** for more advanced settings.

- 12 The basic settings for your Router are completed. You can go to <http://www.tp-link.com> to verify the Internet connection.

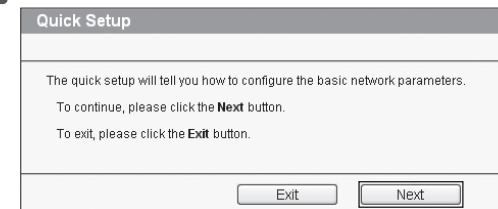


## Appendix 1: Configuring the Router via Web Management Page (for Mac OS X/Linux users or Windows users who can't run the mini CD)

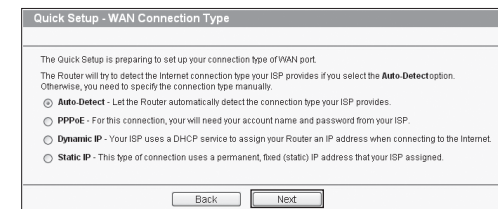
- 1 Open your browser and type <http://tplinklogin.net> in the address field, then use the user name **admin** and password **admin** to log in.



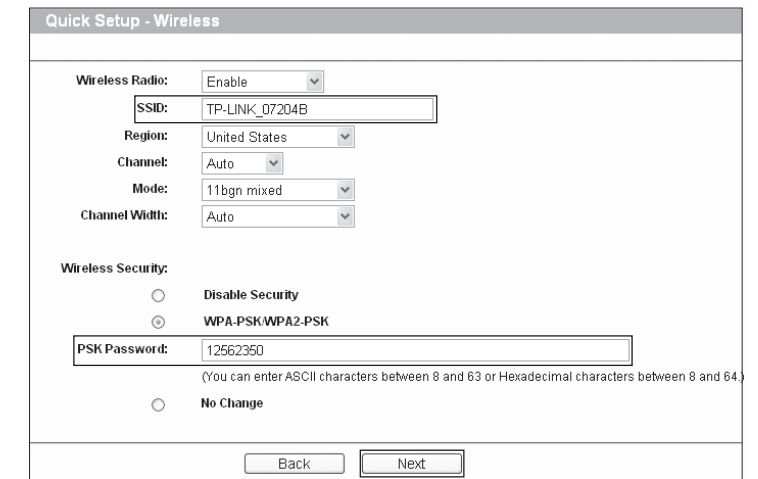
- 2 Click **Quick Setup** in the main menu and click **Next**.



- 3 Select the WAN connection type provided by your ISP. Or you can select **Auto-Detect** and click **Next** to continue.



- 4 The **Dynamic IP** is the suitable connection type for most cases. Here we take it as an example. On the next page, you can rename your wireless network and create your own password on this page. The default wireless name is TP-LINK\_XXXXXX, and the default wireless password, the same as the PIN code, is printed on the bottom label. Click **Next** to continue.



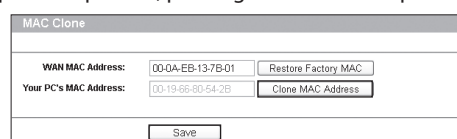
- 5 Click **Reboot** or **Finish** to make your settings take effect.



## Appendix 2: Troubleshooting

### 1. What can I do if I cannot access the Internet?

- 1) Check to verify all connections are connected properly. Try with different Ethernet cables to ensure they are working properly.
- 2) Check to see if you are able to access the Router's web management page. If not, please refer to "What can I do if I cannot open the web management window?".
- 3) Please log in the web management page (<http://tplinklogin.net>), click the menu "Network > WAN", and ensure that the WAN Connection Type is Dynamic IP; this is the suitable connection type for most DSL/Cable modems and other networks.
- 4) For cable modem users, please click menu "Network > MAC Clone". Click **Clone MAC Address** button and then click **Save**. Reboot the modem first and then the Router, try to access the Internet from your computer. If the problem persists, please go to the next step.



- 5) Connect your computer directly to your modem and attempt to access the Internet. If you are still unable to access the Internet, please contact your internet provider for further assistance.

### 2. What can I do if I cannot open the web management window?

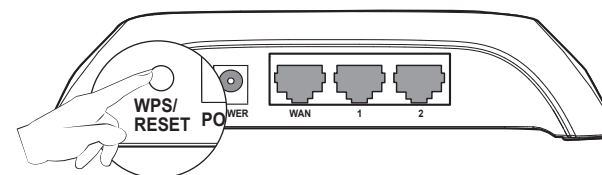
- 1) **For Windows 7/Vista**  
Go to 'Start > Settings > Control Panel'. Click 'View network status and tasks > View status > Properties' and double-click 'Internet Protocol Version 4 (TCP/IPv4)'. Select 'Obtain an IP address automatically', choose 'Obtain DNS server address automatically' and click 'OK'.
- 2) **For Windows XP/2000**  
Go to 'Start > Control Panel'. Click 'Network and Internet Connections > Network Connections'. Right-click 'Local Area Connection', select 'Properties' and then double-click 'Internet Protocol (TCP/IP)'. Select 'Obtain an IP address automatically', choose 'Obtain DNS server address automatically' and click 'OK'.

### 3. What can I do if I forget my password?

- 1) For default wireless password: Please refer to the "Wireless Password/PIN" labeled on the bottom of the Router.
- 2) For the web management page password: Reset the Router first and then use the default user name and password: admin, admin.

### 4. How do I restore my Router's configuration to its factory default settings?

If your router does not work properly, you can reset it and then configure it again. With the Router powered on, press and hold the **WPS/RESET** button on the rear panel for approximately 8 seconds before releasing it.



## Technical Support

- For more troubleshooting help, go to [www.tp-link.com/support/faq.asp](http://www.tp-link.com/support/faq.asp)
- To download the latest Firmware, Driver, Utility and User Guide, go to [www.tp-link.com/support/download.asp](http://www.tp-link.com/support/download.asp)
- For all other technical support, please contact us by using the following details:

#### Global

Tel: +86 755 26504400  
E-mail: [support@tp-link.com](mailto:support@tp-link.com)  
Service time: 24hrs, 7days a week

#### Singapore

Tel: +65 62840493  
E-mail: [support.sg@tp-link.com](mailto:support.sg@tp-link.com)  
Service time: 24hrs, 7days a week

#### UK

Tel: +44 (0) 845 147 0017  
E-mail: [support.uk@tp-link.com](mailto:support.uk@tp-link.com)  
Service time: 24hrs, 7days a week

#### USA/Canada

Toll Free: +1 866 225 8139  
E-mail: [support.usa@tp-link.com](mailto:support.usa@tp-link.com)  
Service time: 24hrs, 7days a week

#### Malaysia

Tel: 1300 88 875465 (1300 88TPLINK)  
E-mail: [support.my@tp-link.com](mailto:support.my@tp-link.com)  
Service time: 24 hrs a day, 7days a week

#### Turkey

Tel: 444 19 25 (Turkish Service)  
E-mail: [support.tr@tp-link.com](mailto:support.tr@tp-link.com)  
Service time: 9:00 AM to 6:00 PM, 7days a week

#### Poland

Tel: +48 (0) 801 080 618 / +48 22 7217563 (if calls from mobile phone)  
E-mail: [support.pl@tp-link.com](mailto:support.pl@tp-link.com)  
Service time: Monday to Friday 9:00 AM to 5:00 PM. GMT+1 or GMT+2 (Daylight Saving Time)

#### Germany / Austria

Tel: +49 1805 875465 (German Service) +49 1805 TPLINK  
E-mail: [support.de@tp-link.com](mailto:support.de@tp-link.com)  
Fee: 0.14 EUR/min from the German fixed phone network and up to 0.42 EUR/min from mobile phone  
Service Time: Monday to Friday 9:00 AM to 6:00 PM. GMT+1 or GMT+2 (Daylight Saving Time in Germany)  
\* Except bank holidays in Hesse

#### Australia & New Zealand

Tel: AU 1300 87 5465  
NZ 0800 87 5465  
E-mail: [support@tp-link.com.au](mailto:support@tp-link.com.au)  
Service time: 24hrs, 7 days a week

#### Italy

Tel: +39 02 66987799  
E-mail: [support.it@tp-link.com](mailto:support.it@tp-link.com)  
Service time: 9:00 AM to 6:00 PM, from Monday to Friday

#### Ukrainian

Tel: +380 (44) 590-51-14  
E-mail: [support.ua@tp-link.com](mailto:support.ua@tp-link.com)  
Service time: Monday to Friday 14:00 PM to 22:00 PM

#### Brazilian

Toll Free: 0800-770-4337 (Portuguese Service)  
E-mail: [support.br@tp-link.com](mailto:support.br@tp-link.com)  
Service time: Monday to Saturday 08:00 AM to 08:00 PM

#### Indonesia

Tel: (+62) 021 6259 135  
E-mail: [support.id@tp-link.com](mailto:support.id@tp-link.com)  
Service time: Monday to Friday 9:00 AM to 12:00; 13:00 -18:00  
\*Except public holidays

#### Switzerland

Tel: +41 (0) 848 800998 (German Service)  
E-mail: [support.ch@tp-link.com](mailto:support.ch@tp-link.com)  
Fee: 4-8 Rp/min, depending on rate of different time  
Service time: Monday to Friday 9:00 AM to 6:00 PM. GMT+ 1 or GMT+ 2 (Daylight Saving Time)

#### Russian Federation

Tel: 8 (499) 754-55-60 (toll-free call from any RF region)  
E-mail: [support.ru@tp-link.com](mailto:support.ru@tp-link.com)  
Service time: from 10:00 to 18:00 (Moscow time)  
\*Except weekends and holidays in Russian Federation

## Free Manuals Download Website

<http://myh66.com>

<http://usermanuals.us>

<http://www.somanuals.com>

<http://www.4manuals.cc>

<http://www.manual-lib.com>

<http://www.404manual.com>

<http://www.luxmanual.com>

<http://aubethermostatmanual.com>

Golf course search by state

<http://golfingnear.com>

Email search by domain

<http://emailbydomain.com>

Auto manuals search

<http://auto.somanuals.com>

TV manuals search

<http://tv.somanuals.com>