

# TP-LINK®

## User Guide

### TL-SF2226P+/SL2226P+ 24+2/24+2G Remote Smart Switch



## **COPYRIGHT & TRADEMARKS**

Specifications are subject to change without notice. **TP-LINK**<sup>®</sup> is a registered trademark of TP-LINK Technologies Co., Ltd. Other brands and product names are trademarks or registered trademarks of their respective holders.

No part of the specifications may be reproduced in any form or by any means or used to make any derivative such as translation, transformation, or adaptation without permission from TP-LINK Technologies Co., Ltd. Copyright © 2005 TP-LINK Technologies Co., Ltd. All rights reserved.

COPYRIGHT & TRADEMARKS .....	0
Package Contents .....	1
Chapter 1: About this User's Guide .....	2
1.1 Usage.....	2
1.2 Assumpsit.....	2
1.3 Overview of this User's Guide.....	2
Chapter 2: Introduction.....	3
2.1 Features.....	3
Chapter 3: Installation .....	4
3.1 Installation.....	4
3.2 Rack Installation.....	4
3.3 Power On.....	5
3.4 Initialization .....	5
Chapter 4: Explanation of Switch Appearance and the Method of Connecting Switch.....	6
4.1 Front Panel .....	6
4.2 Rear Panel.....	6
4.3 LED.....	7
4.4 Optional Extension Modules .....	7
4.5 Connection.....	7
Chapter 5: Installation and the Usage of the Remote Management Software.....	8
5.1 Steps of Installation of the Remote Management Software —SSU.....	8
5.2 Usage of Remote Configuration Software -- SSU .....	8
5.2.1 Add.....	9
5.2.2 Connection.....	13
5.2.3 Configuration .....	14
5.2.4 Exit.....	21
Chapter6 TELNET/Out-of-Band Management .....	22
6.1 Introduction .....	22
6.2 How to connect Out-of-Band.....	22
6.3 How to connect TELNET.....	24
6.4 The interface and operating way of TELNET/Out-of-Band.....	25
6.5 Configuration of Out-of-Band Management .....	25
Appendix A Technical Specifications .....	33

## Package Contents

The following contents should be found in your box:

- One Switch
- One AC power cable
- One Serial cable
- One User's Guide
- One Resource CD
- Two mounting brackets and screws

**Note:** If any of the listed contents are damaged or missing, please contact the retailer from whom you purchased the Switch for assistance.

## Chapter 1: About this User's Guide

Thank you for purchasing TL-SF2226P+/TL-SL2226P+ Remote Smart Switch! The TL-SF2226P+/TL-SL2226P+ provides powerful management functions. With the feature of high-performance, easy to use and economical, the TL-SF2226P+/TL-SL2226P+ is one of the best choice for you.

### 1.1 Usage

This User's Guide tells you how to use the TL-SF2226P+/TL-SL2226P+ Remote Smart Switch.

### 1.2 Assumpsit

The Switch indicated in the User's Guide is the TL-SF2226P+/TL-SL2226P+ Remote Smart Switch.

### 1.3 Overview of this User's Guide

Chapter 1	About the User's Guide
Chapter 2	Introduction. Describes the switch and its features
Chapter 3	Installation. Helps you to get started with the basic installation of the switch
Chapter4	Explanation of switch appearance and the method of connecting switch
Chapter5	Installation and Usage of Remote Management Software
Chapter6	TELNET/Out-of-Band Management
Appendix	Technical Specifications

## Chapter 2: Introduction

This part simply describes the features of TL-SF2226P+/TL-SL2226P+ Remote Smart Switch. For more details, please refer to Chapter 4.

### 2.1 Features

- Supports remote management
- Supports Out-of-Band management
- Supports Telnet management
- Provides 10/100M switch base function
- 24 10Base-T/100Base-TX RJ-45 ports with auto-MDI/MDIX
- The TL-SL2226P+ provides two 10Base-T/100Base-TX/1000Base-T, 100Base-FX/1000Base-SX/LX extension slots, supporting 10/100/1000Mbps module card, e.g. TL-SM201/TL-SM301 serial fiber/twist pair module card.
- The TL-SF2226P+ provides two independent extension slots, supporting 10/100Mbps module card, e.g. TL-SM201 serial fiber/twist pair module card.
- Supports port auto-negotiation function, negotiating the speed and duplex mode between the devices automatically
- Supports full-duplex/half-duplex flow control
- Provides Maximum 26 Port-based VLAN and 32 IEEE802.1Q based Tag VLAN
- Supports MAC address learning and aging with programmable age time
- Supports MAC Binding.
- Supports QOS configuration (802.1p Base QOS)
- Supports Trunk management.
- Supports bandwidth Management
- Supports upgrading switch software with COM and TFTP

## Chapter 3: Installation

### 3.1 Installation

Follow these steps to install the switch:

- The surface must support at least 5kg
- The power source must be within 1.5m
- Check the cable to make sure the connection to AC power
- Leave enough space for the ventilation

### 3.2 Rack Installation

The TL-SF2226P+/TL-SL2226P+ can be mounting in an EIA standard size 19 inches rack.

1. Attach a mounting bracket to each side of the TL-SF2226P+ with the screws provided.
2. Slide the TL-SF2226P+/TL-SL2226P+ into the Rack.
3. Use the screws to secure the switch to the Rack.

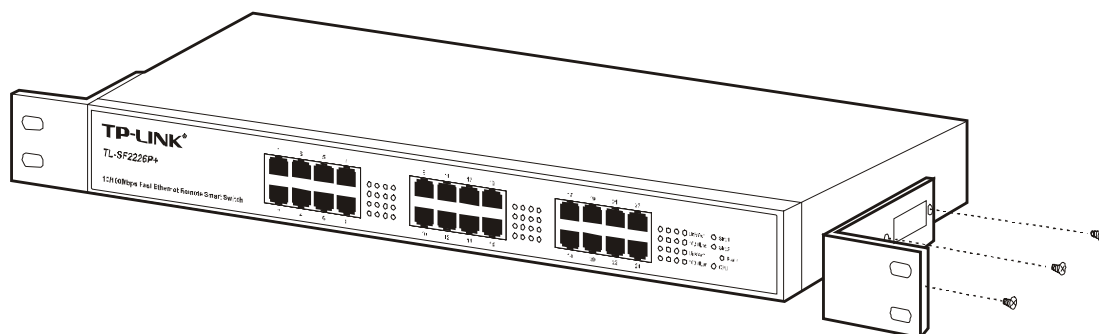


Figure 3-1 The view of attaching the mount brackets on the TL-SF2226P+

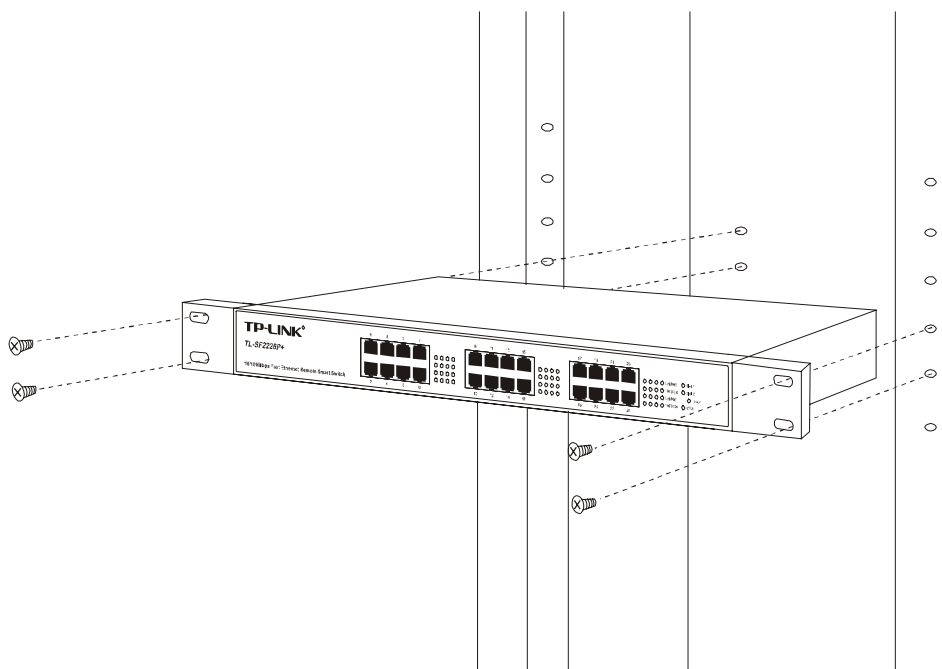


Figure 3-2 The view of mounting the TL-SF2226P+ in the rack

### 3.3 Power On

The TL-SF2226P+/TL-SL2226P+ can be used with the power source in the range of 100 to 240 VAC, 50 to 60Hz.

The internal power system of the TL-SF2226P+/TL-SL2226P+ can automatically adjust the operating power according to the power input. The POWER LED will be light when power on.

### 3.4 Initialization

Turn on the power, the switch will automatically initialize and the LEDs will be light as follows:

At the time you turn on the power, if the LEDs of slot1 and slot2 on the front panel are light, which means there are two module cards in slot1 and slot2. The LEDs of Port 1- 24 will turn out after two seconds that indicates the system is resetting. The CUP LED flashing means the switch starts to work in good condition.

**Caution:** As a precaution in the event of a power failure, unplug the switch. When the power resumed, plug the switch back in.

All the pictures are based on the TL-SF2226P+ in the manual. The pictures of TL-SL2226P+ are almost the same as TL-SF2226P+.



## Chapter 4: Explanation of Switch Appearance and the Method of Connecting Switch

This chapter covers more details about front panel, rear panel, LED and extension module of the switch.

### 4.1 Front Panel

There are 24 10/100Mbps ports and LED indicators on the front panel of the TL-SF2226P+.

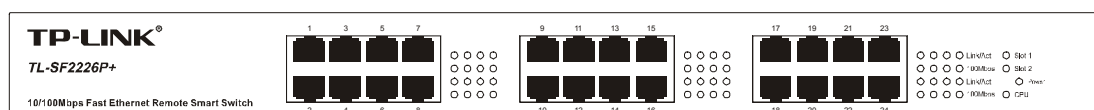


Figure 4-1 Front Panel of the TL-SF2226P+

### 4.2 Rear Panel

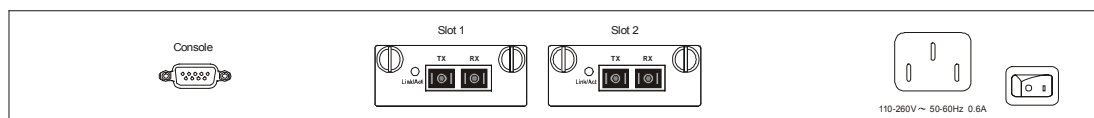


Figure 4-2 Rear Panel of the TL-SF2226P+

There is a power switch, a power connector, a console (RS232) port and 2 extension module slots on the rear panel.

- **Power Connector**

The AC power connector is a standard three-pronged connector that supports the power cord. Plug the female connector of the provided power cord into the socket, and the male side of the cord into a power outlet. Supported input voltage range is from 100 to 240 VAC at 50-60Hz.

- **Console Port**

The console port or RS232 port on the right of the rear panel is the connection port with PC when Out-of-Band management. (For more details, please refer to Chapter 6).

- **Module Slot**

The module slots can be inserted with 10/100M module card (TL-SF2226P+) or 10/100/1000M or a 1000M Base-X module card (TL-SL2226P+).

### 4.3 LED

LEDs, including Power LED, 100Mbps LED, Link/Act LED, Slot1, Slot2 and CPU LED, can detect and indicate the state of the switch. More details are as follows.

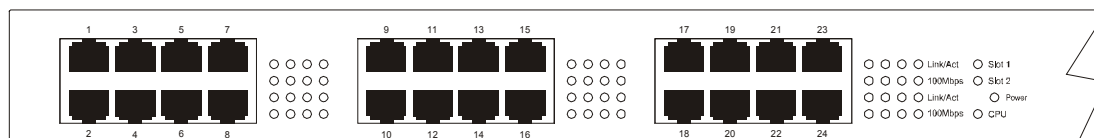


Figure 4-3 LED Indicators view of TL-SF2226P+ Switch

- **Power LED**

The power LED will be solid red when power on, or else, check the power connection.

- **Link/Act LED**

The LED is lit when there is a secure connection to a device at any of the ports.

- **100Mbps LED**

When the normal ports connect a 100Mbps device, the corresponding LED is green, an unlit LED indicates a connection speed of 10Mbps.

- **Slot LED**

Slot1, Slot2 LED indicates that whether there is a module card in the module slot.

- **CPU LED**

The CPU LED flashing means that the switch works in good condition.

### 4.4 Optional Extension Modules

Before you install any modules, remember to turn off the power at first.

After you take out the board on the slot, put the module into the extension slot. The TL-SF2226P+ can auto-identify the module and configure it automatically.

The TL-SF2226P+ can be used with TL-SM201 100M series modules.

**Caution:** Never install the modules without turning off the power.

### 4.5 Connection

The TL-SF2226P+ supports MDI/MDIX, so you can use every port as a normal port or an uplink port. Each port is independent, which makes the connection very easy.

**Caution:** When the connection is ok, the Link/Act is light, or else, make sure the twist pair is working and the power is on.

## Chapter 5: Installation and the Usage of the Remote Management Software

The TL-SF2226P+/TL-SL2226P+ is a smart switch, you can configure it with the remote Management software shipped with the switch, It's very convenient for you to manage the switch. After install the software under windows OS, you can manage several switches at the same time.

**Caution:** Between the remote management software and the telnet management described in the next chapter, you can only choose one to manage the switch.

### 5.1 Steps of Installation of the Remote Management Software

#### —SSU

- 1) Installation requirement: Windows OS, Supporting TCP/IP Protocol.
- 2) Installation steps: Run the **setup.exe**, and following the wizard to finish the setup. If you want to change the default path, click **Browse**, Input or choose the path you want, click **OK** and then **next** to finish the setup. As figure 5-1.

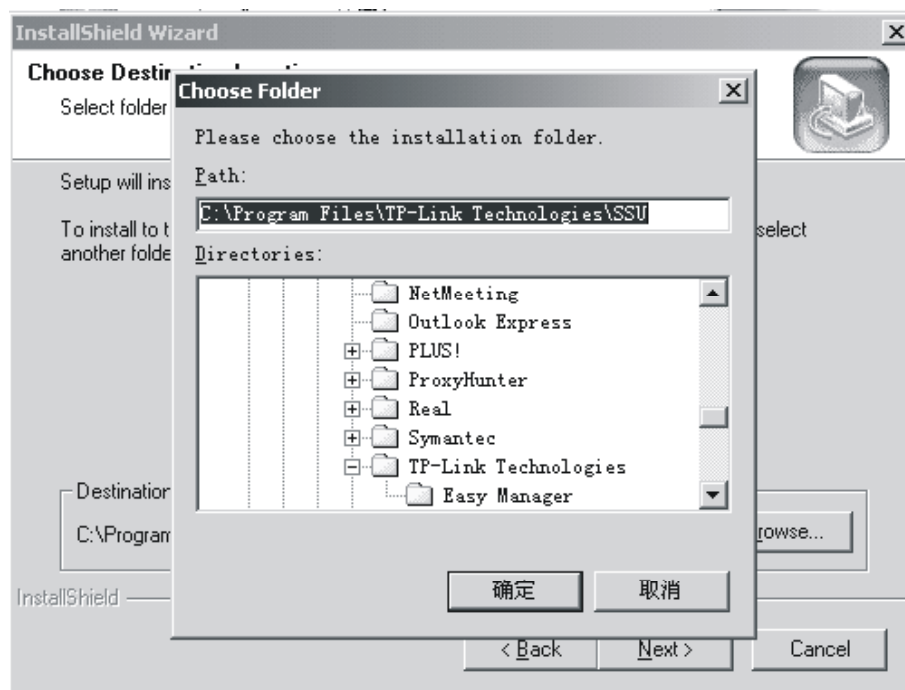


Figure 5-1

### 5.2 Usage of Remote Configuration Software -- SSU

The interface of SSU application is friendly and easy to use. Generally speaking, there

are four steps on configuring the switch.

- 1) Add
- 2) Connection
- 3) Configuration
- 4) Exit

**Caution:** When you use the switch for the first time, you must reset the IP address and gateway of the switch. The switch default IP address is 192.168.0.100(for more details, please refer to Chapter 5).

Here are details on how to use the SSU application.

Before configuration, make sure that the PC and the switch which the SSU application installed can **see** each other. You can **ping** the switch, check whether they can **see** each other. If they can't **see** each other, check whether the power is on and the twisted pair is well connected. If all is ok, run the SSU application, you can see the initialized interface of the SSU application. As figure 5-2.

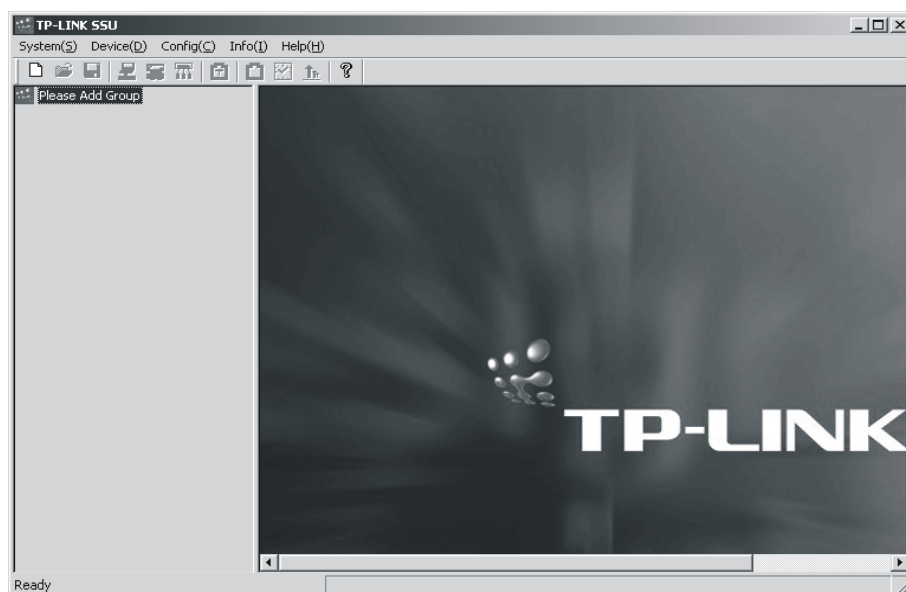


Figure 5-2

### 5.2.1 Add

- 1) First, add a device group. The name of the new group can't be the same as the names that already existed in the application. After adding the group, you can rename the group and delete it at any time. Here are some methods as follows.
  - a) Click main menu->**System**->**Add Group**. As figure 5-3.



Figure 5-3

Click **Add Group**, you can see the dialog. As figure 5-4



Figure 5-4

- b) Click the right button at **Please Add Group** on initialized interface and then pop up a menu, click **Add Group**. As figure 5-5

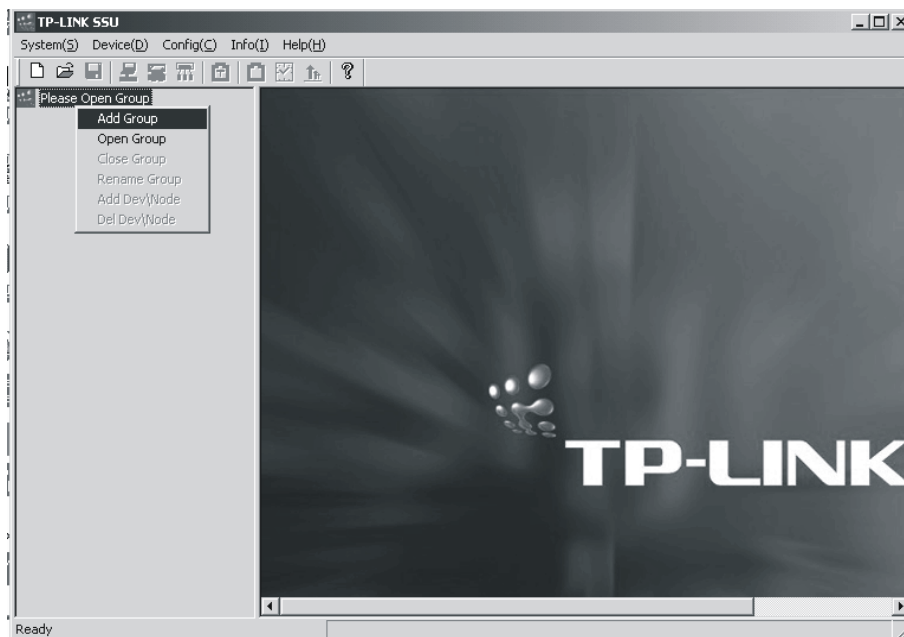


Figure 5-5

- c) Click the add group icon on the tool bar. As figure 5-6.

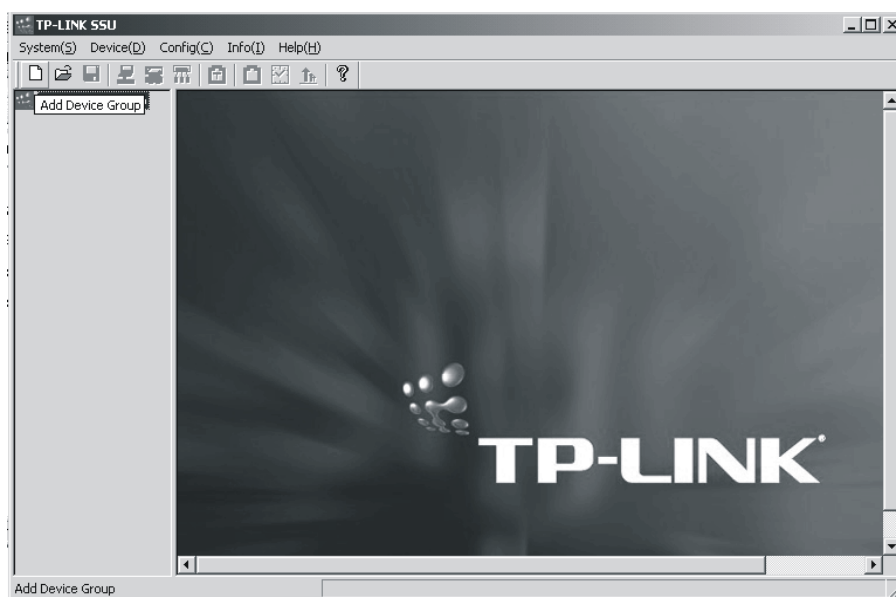


Figure 5-6

- 2) Add device and node in device group. In device group, you can add device and node, which are just like file and folder. The hierarchy of node and device of a group are not more than five. If there is the fifth hierarchy, the fifth hierarchy can only be a device. The device and node can be changed at any time you want. But in a device group, the name of device and node must be different from each other, so is the IP Address. The length of their name is not more than 255, the password length is not more than 7.

Open the group you added just now and click the right button on the device name, then there will pop up a menu. As figure 5-7.

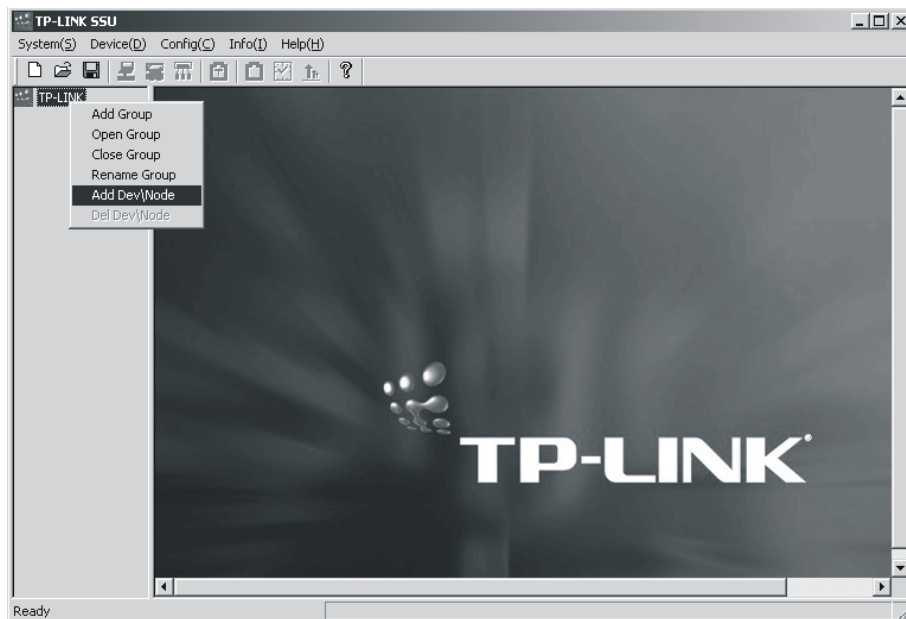


Figure 5-7

Click **Add Dev/ Node**, you will see a dialog. As figure 5-8.

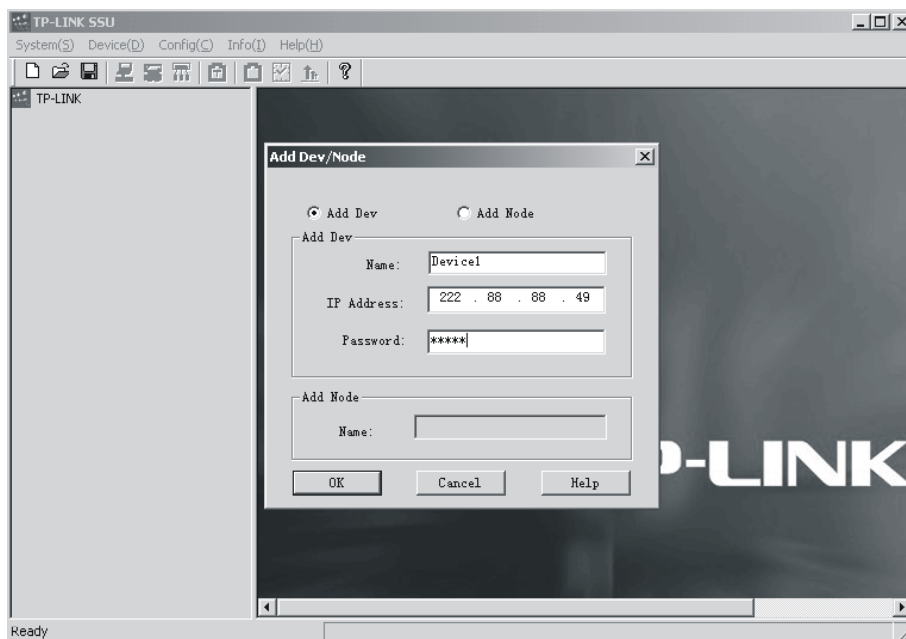


Figure 5-8

After adding device and node, you can see the interface as figure 5-9.

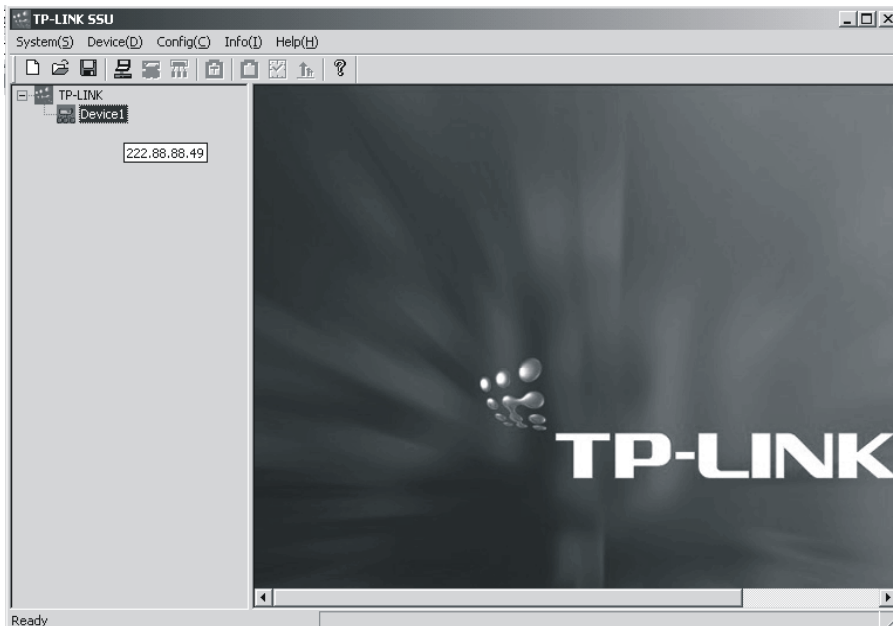


Figure 5-9

Look at the device icon carefully, if the color of the icon is red, it means that the device can't communicate with the PC. Please check whether the power is on, the twisted pair is well connected and the ping is ok.

If all is ok, you can click the save icon to save information of the device.

### 5.2.2 Connection

Now you can connect the device. If the color of the device icon is green, click the right button on the icon, then pop up a menu, click **connect**, you will see the interface as figure 5-10.

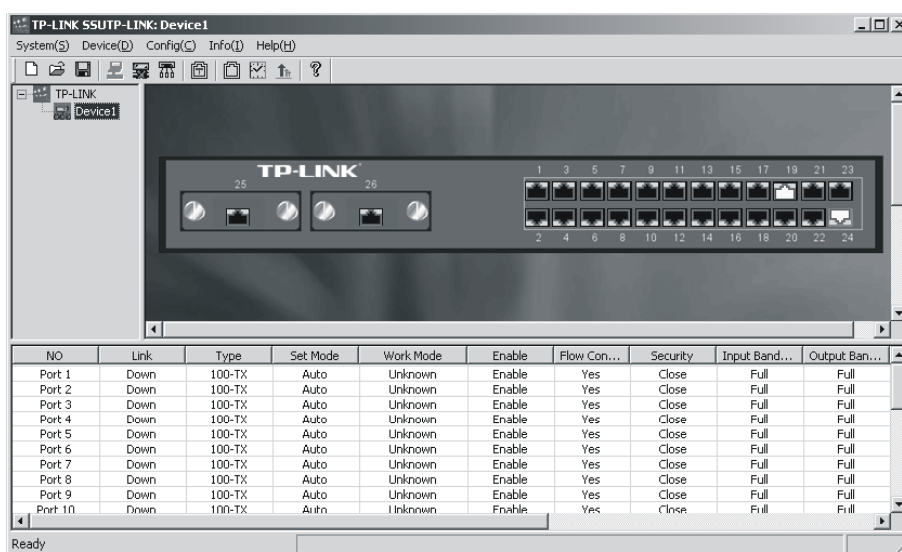


Figure 5-10



The color of the port on the panel is yellow, which means that the port is in connection. If it is red, it means that the port is forbidden to use. If the color of the port frame is red, it's said that the port is management port.

### 5.2.3 Configuration

If the device is well connected, you can configure the switch now.

#### 5.2.3.1 Conventional Management

##### 1. Disconnect

When the device is in connection, if at the moment it does not need management, you can choose the **Close Group** button to close the group.

##### 2. Reset

When the device is in connection, if resetting needed, click main menu ->**Device->Reset**, a dialog will pop up. Click **ok** on the dialog, finally, the switch will be reset.

##### 3. Resume Factory Setting

When the device is in connection, if resuming factory setting needed, click main menu ->**Device->Resume Factory Setting**, a dialog will come out, click ok on the dialog, then the switch will resume factory setting.

##### 4. Change Password

When the device is in connection, if you want to change password, click main menu->**Device->Change Password**, a dialog will be pop up, you can change password in the dialog, the length of password is not more than 7.

#### 5.2.3.2 Configuration of Device

##### 1. VLAN Config

The TL-SF2226P+ can support three VLAN modes, no VLAN, port VLAN and tag VLAN.

**Default Setting:** no VLAN.

**Steps of Setting:** If VLAN mode is no VLAN, or you want to change current VLAN mode, you should select one mode you want to. Click main menu->**config->Switch VLAN Mode**. As figure 5-11.

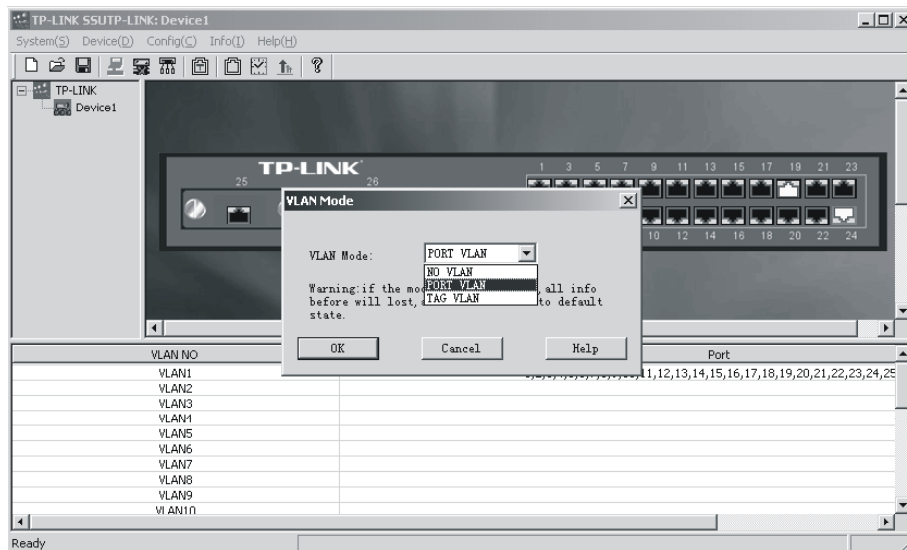


Figure 5-11

Current VLAN mode is shown in the combo box, select one mode you want in the combo box and click **OK**. If you change the VLAN mode, the information of previous VLAN will be lost and the switch will give new default information about VLAN. If the VLAN mode is port VLAN, all ports will be in a VLAN. If the VLAN mode is tag VLAN, all ports will be in a VLAN which tag's value is 1. After Configuring VLAN mode, you can configure VLAN now. Click main menu->**Config->VLAN Config**, under the view, you will see the VLAN list box. Double click the VLAN you want to change. If the VLAN mode is port VLAN, select or delete some ports you want to change in the pop-up dialog. As figure 5 -12.

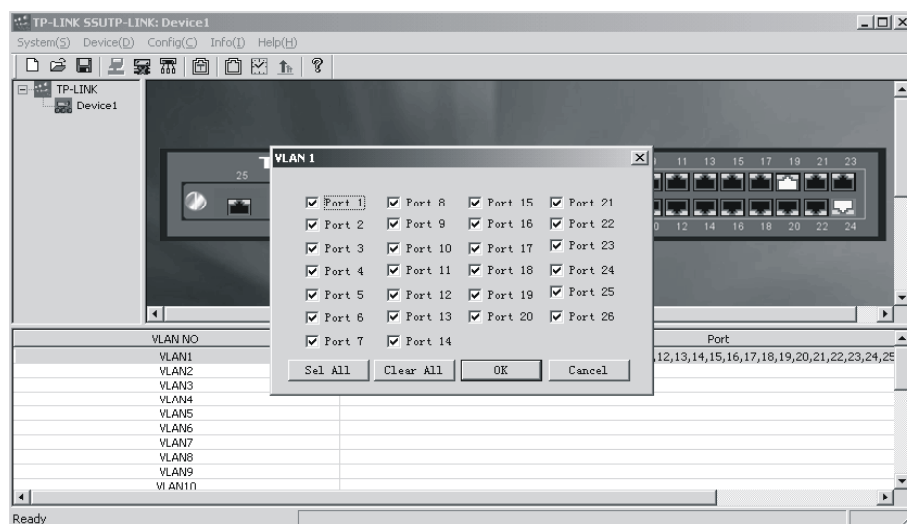


Figure 5-12

If the VLAN mode is tag VLAN, Configure tag VLAN in the pop-up dialog. As figure 5-13. For more details, please read the help file.

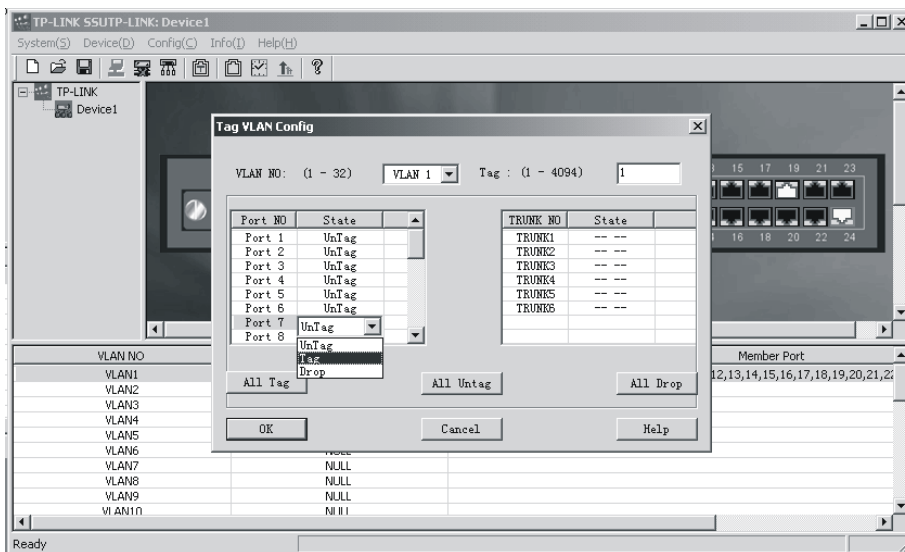


Figure 5-13

Now go back to the main menu->**Config->VLAN Config->Config Effect**, Only execute this step, the Configuration will be valid. If the VLAN mode is not changed, this menu can't be seen.

**2. TRUNK Config**

TRUNK can transmit net data through a group of ports. The switch looks a TRUNK as a big port regardless of it's composition.

**Default setting:** no TRUNK.

**Steps of setting:** Click main menu->**Config-> TRUNK Config->Config Effect** or click the TRUNK icon on toolbar. As figure 5-14.

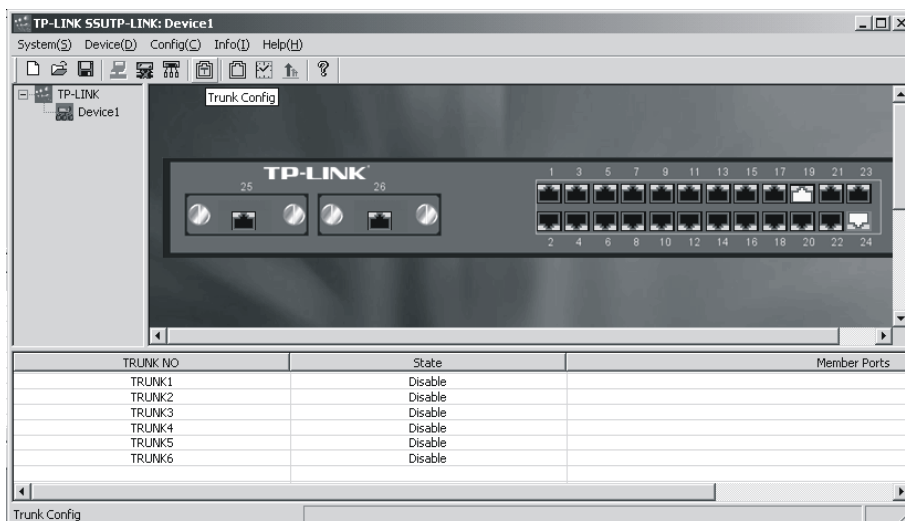


Figure 5-14

Double click the TRUNK you want to config in the TURNK list box, TRUNK configuration dialog will pop up, and you can config the TRUNK now. For more details, please refer to

help file.

Now go back to main menu->**Config**->**TRUNK Config**->**Config Effect**.

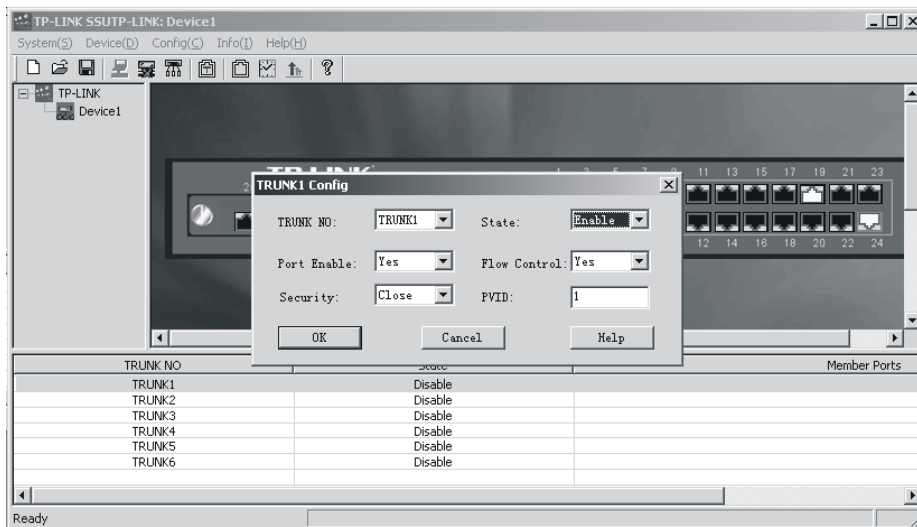


Figure 5-15

Only execute this step, the Configuration will be valid. If the TRUNK is not changed, this menu can't be seen.

### 3. Port Config

Click main menu->**Config**->**Port Config** or double click a port in the port list box. As figure 5-16.

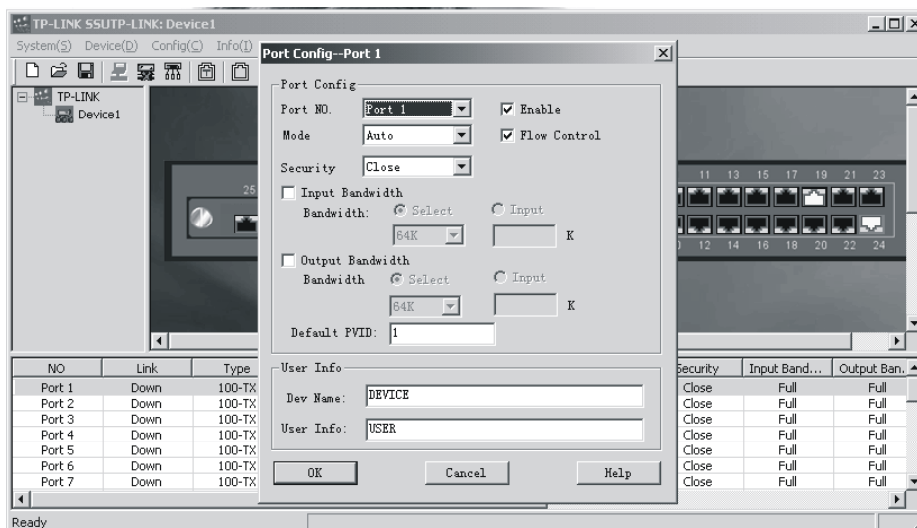


Figure 5-16

Now you can configure each parameter of the port except port priority.

- 1) Mode: 10Base-T/100Base-TX Ports
  - Auto (default): auto-test the speed and negotiate the duplex mode with the other end.

- 10HD: 10Mbps, Half-Duplex.
  - 10FD: 10Mbps, Full-Duplex.
  - 100HD: 100Mbps, Half-Duplex.
  - 100FD: 100Mbps, Full-Duplex
- 2) Flow Control:
- Disable: The port won't produce Flow Control packets and will discard the Flow Control packets received.
  - Enable: The Switch will negotiate Flow Control on the specified port according to Full-Duplex or Half-Duplex.
- 3) Port Security: When you configure the Port Security of a port to be Enable, the port won't learn any new MAC address. Furthermore, the port only transfers the data accordant to static MAC Address. If the port does not bind any static MAC address, the port will not transfer data. When the Port Security of a port is disabled, the port will automatically learn any new MAC Address and transfer data.
- Default setting: Disable
- 4) Default PVID: There is the choice only in the IEEE802.1Q Tag VLAN mode. Every port on the Switch has a default VID which is the VID for an untag Tag received by the port.
- 5) Default Value: 1
- 6) User Info: User Info just gives the port a description.

#### 4. **Priority Config**

- **Steps of Configuring Priority:**

Click main menu->**Config->Priority Config** or click the priority icon on toolbar. As figure 5-17.

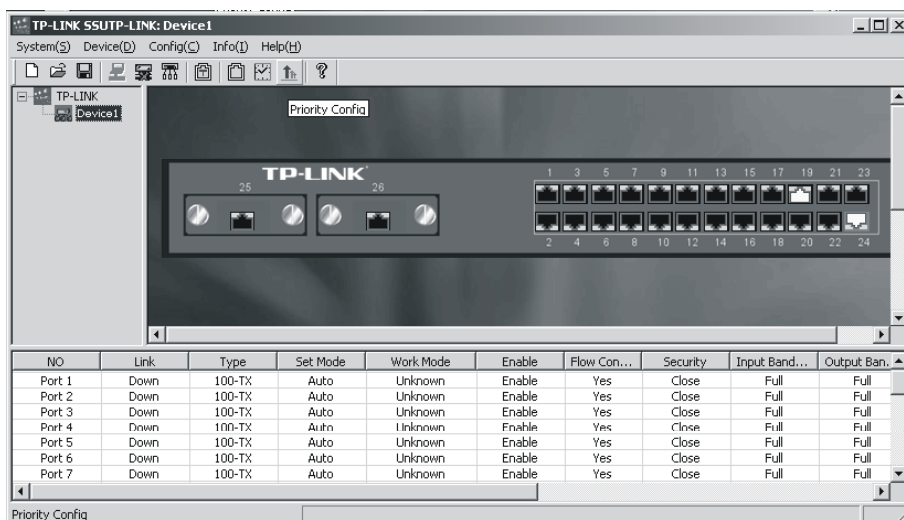


Figure 5-17

Now a dialog will be pop up. In the dialog, you should Enable QOS, set high priority and low priority and select a priority class in the list box. For more details, please refer to help file.

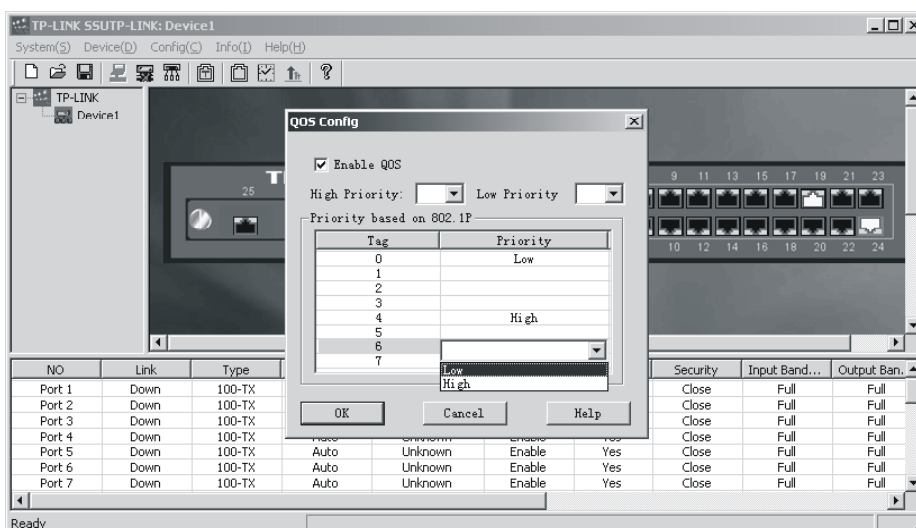


Figure 5-18

**5. Broadcast Storm Control**

When the Broadcast Storm Control is enabled, it will be valid. Click main menu-> **Config-> Broadcast Control** and you can configure the Broadcast Storm Control. For more details, please read help file.

**6. Static MAC Bind**

Static MAC Bind can help you control the security of network more efficiently. When it takes effect, the ports will not learn any new MAC Address. The switch can bind 128 MAC addresses at most. One port can bind several MAC Addresses, but one MAC address only can be bound by one port. Click main menu->**Config->Static MAC Bind**,

you can see the interface as follows. For more details, please refer to help file.

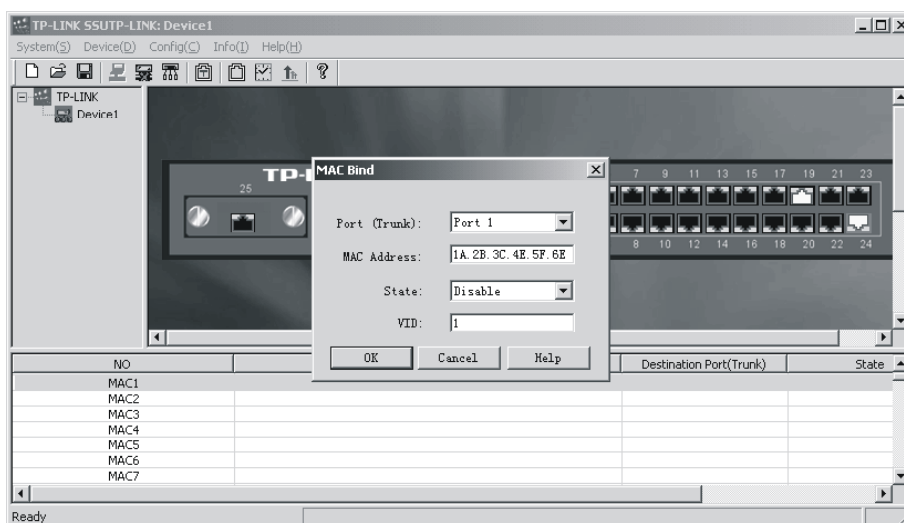


Figure 5-19

### 7. MAC Aging Time

Dynamic forwarding table entries, which are made up of the source and destination MAC address and their associated port numbers, are deleted from the table if they are not accessed within the aging time. The aging time can be from 300 to 765 seconds.

Steps of Setting: Click main menu->**Config**->**MAC Aging Time** or click the MAC Aging Time icon on the toolbar, then configure MAC Aging Time in the pop-up dialog.

### 8. Change IP

Click main menu->**Config**->**Change IP**, you will see the interface as follows.

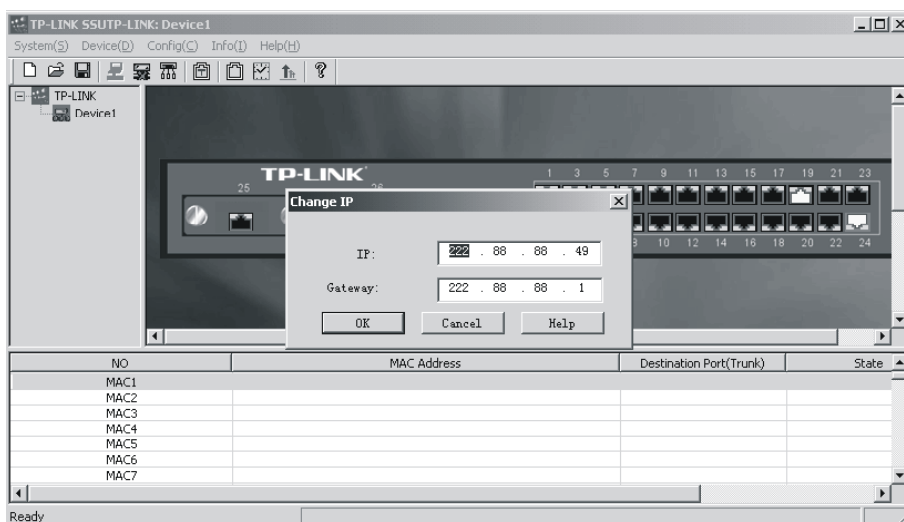


Figure 5-20

The IP and Gateway before changed is current IP and Gateway of the switch. Through this dialog, you can change the switch IP and Gateway. This operation will cause the switch disconnect.

**Caution:** After change, if you can't connect with the switch, you can use RS232 to connect the switch and get the switch IP.

#### **9. Switch VLAN Mode**

The TL-SF2226P+ can support three VLAN modes, no VLAN, port VLAN and tag VLAN. You can only choose one mode of the three as the current switch VLAN Mode.

#### **10. System Auto Time**

Click main menu->**Config->System Auto Time**, you can configure the time in the text box. The range of **System Auto Time** is from 20 minutes to 6000 minutes.

Time will count after successful connection. When time is up to System Auto Time, a dialog will be pop up. If you want to continue the management, time will count again, else the switch will be disconnected after 30 seconds.

#### **5.2.4 Exit**

After you configuring the switch, if you want to exit the program, click main menu->**System->Exit**.



## Chapter6 TELNET/Out-of-Band Management

### 6.1 Introduction

Through TELNET you can realize Remote Log in to manage the Switch. Out-of-Band Management manages the switch locally through the console port, without occupying the bandwidth.

Though TELNET and Out-of-Band have different presentation, their management contents are the same, both of them can be used to configure the switch's characters.

**Caution:** Out-of-Band management and remote management (SSU management and TELNET management) can log into the switch at the same time, the last change will be saved in the switch. SSU management and TELNET management can not log in to manage the switch at the same time.

### 6.2 How to connect Out-of-Band

Out-of-Band Management needs a terminal or a HyperTerminal.

First, connect the switch and the PC by the console cord. Then, run HyperTerminal. Refer to the following figure to configure the HyperTerminal.

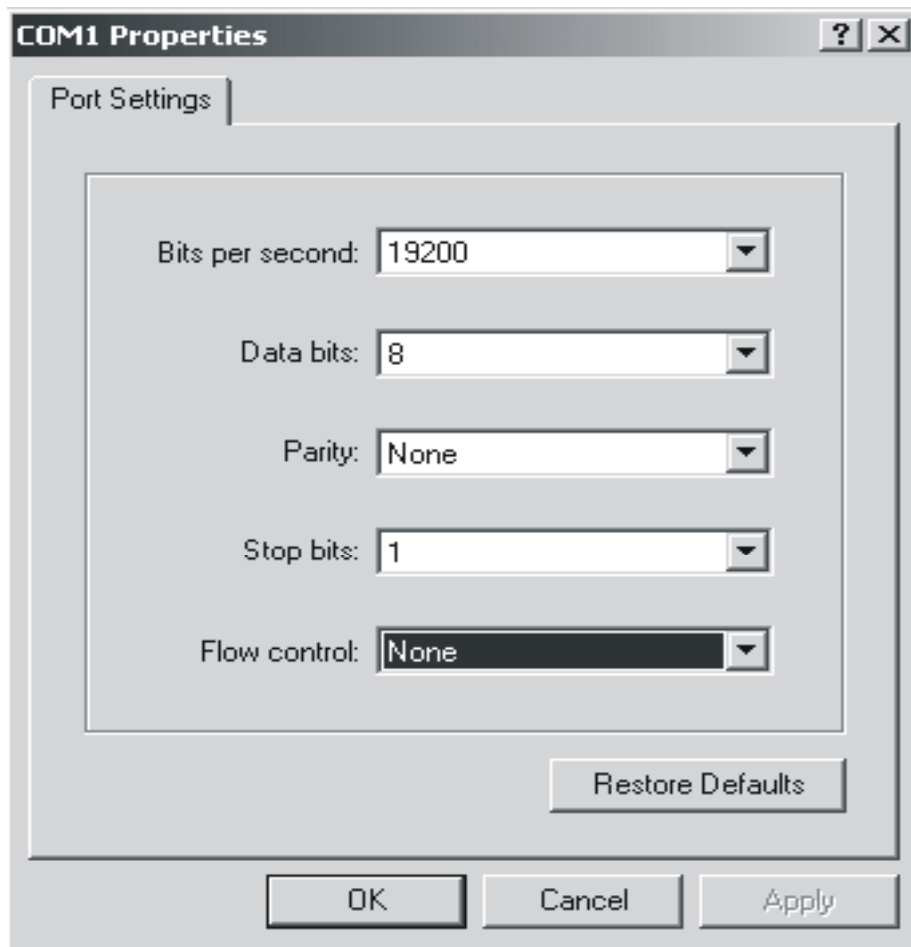


Figure 6-1

The speed of the console port is 19200bps. The data bit is 8 bit. There is not Parity Test and flow control. The Stop bit is 1. Now you will see the interface as follows.

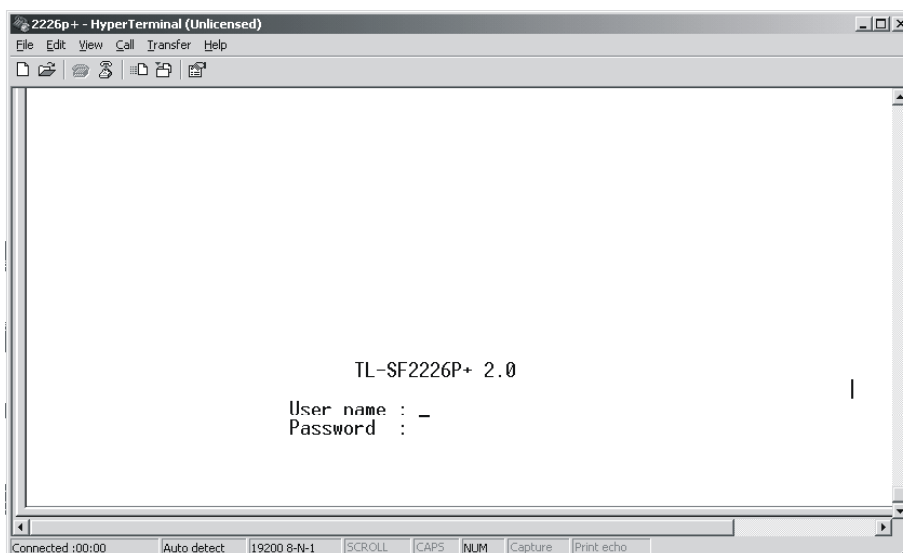


Figure 6-2

Input user name and password, the default user name and password are admin, you can change it after logging in.

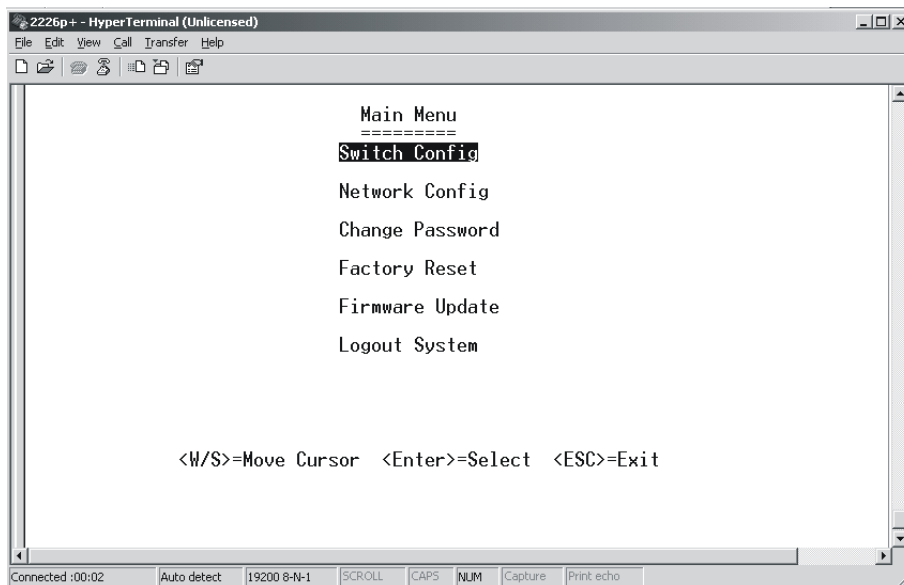


Figure 6-3

### 6.3 How to connect TELNET

Connect the management workstation to the management port on the switch. You can directly use TELNET command on the command DOS prompt in the Windows Attachment.

The parameter following the TELNET command is the IP address of the switch which can be revised adapting to the network. However, when you reuse TELNET to access, the parameter will be the switch's IP address newly set. Here is an example: telnet 222.88.88.49, you will see the interface as follows.

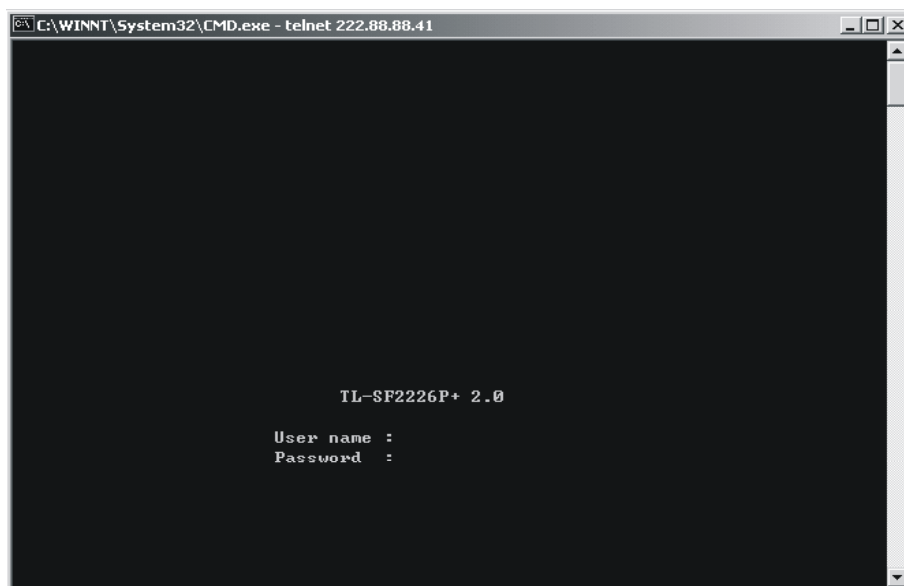


Figure 6-4

Input user name and password and you can manage the switch.

If you can not log in, check whether the network is working, check whether there is other user who has already logged on. (Only one user can access the switch at one time through TELNET.)

## 6.4 The interface and operating way of TELNET/Out-of-Band

No matter through TELNET or Out-of-Band Management, the users have two rights.

- Admin: the control right to manage the switch
- Guest: the read right for port of objects Admin visits

## 6.5 Configuration of Out-of-Band Management

**Caution:** When you configure the switch, if you want to move the cursor, just press **W** or **S**, if you want to enter an interface, just press **enter**. The software is very easy to use, just doing operation according to the prompt given by the software.

### 1) Switch Config

Switch Config provides you feature parameters of the switch, you can configure them directly. For how to configure them, you can refer to chapter 4. Here are some notes you should pay attention to. Press **enter** you will see the following interface.

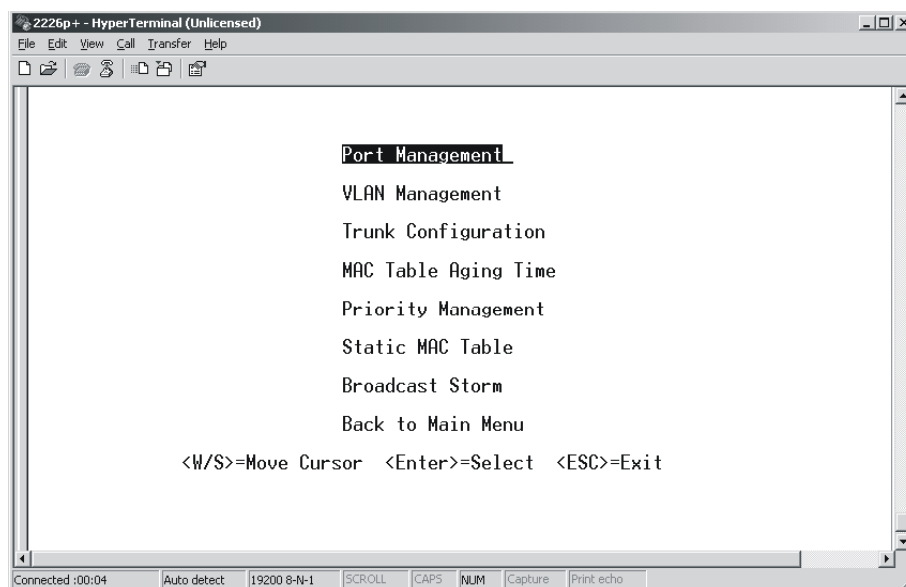


Figure 6-5

- **Port Management**

In the interface, you can change properties of the port you want to, including flow control, port security, port state, bandwidth management and PVID and so on, you also can know the link status, real working mode and port type.

The link status, real working mode and port type of the switch can only be read and will be refreshed in 10 seconds. If the color of the link status of one port is opposite to others,

it means that the port is connecting with remote management. You can not shut down the port in order that the remote connection can't be interrupted. You can edit properties of the ports with the **space** key. If the VLAN type is Tag based VLAN, the PVID can't be visible and can't be edit. As figure 5-6.

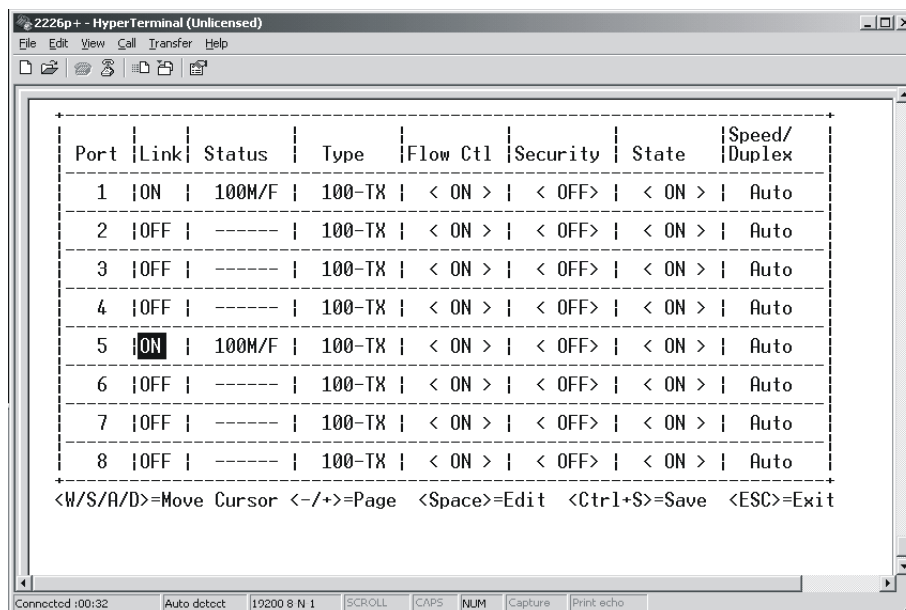


Figure 6-6

● **VLAN Management**

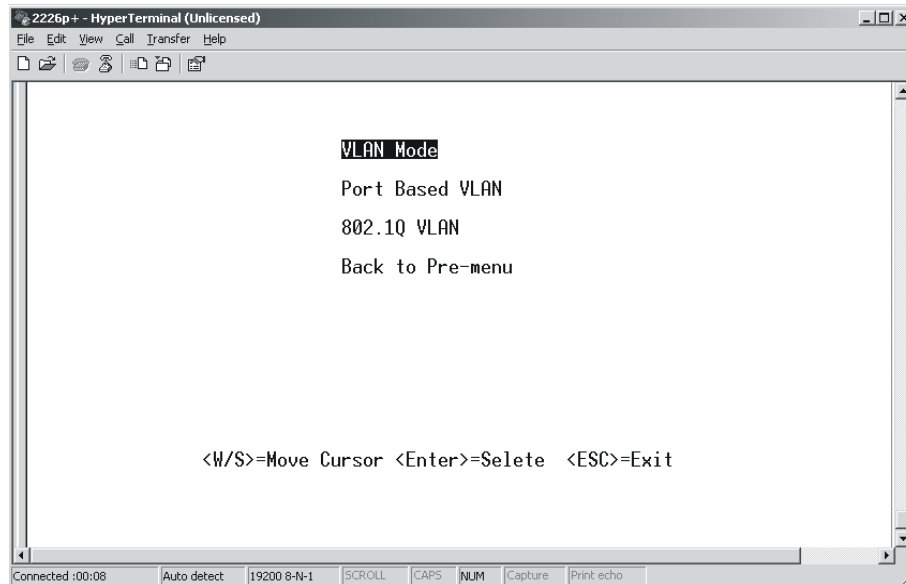


Figure 6-7

VLAN Management includes VLAN Mode, Port Based VLAN and 802.1Q VLAN. If you change the VLAN Mode, the switch will lose the info of port PVID and static binding address. The interface of VLAN Mode is as follows.

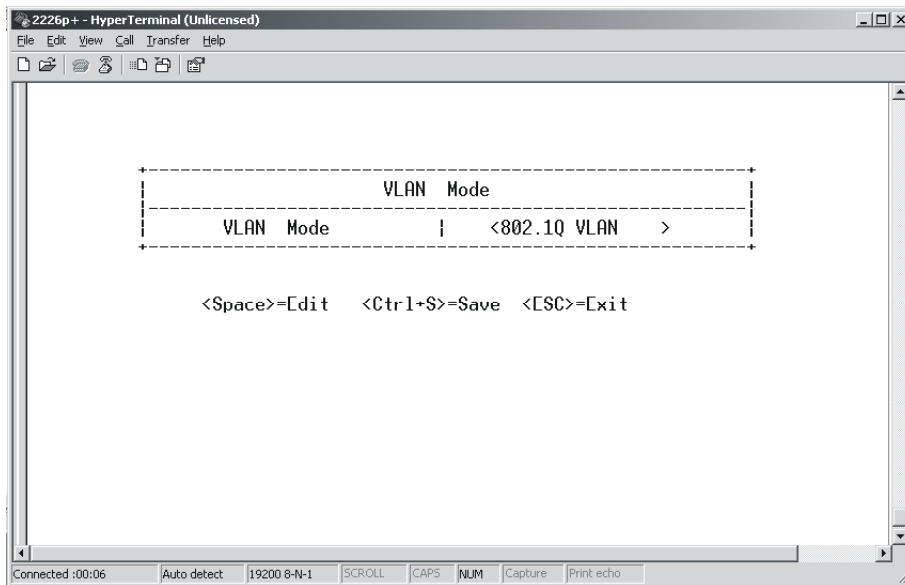


Figure 6-8

Port Based VLAN is as follows.

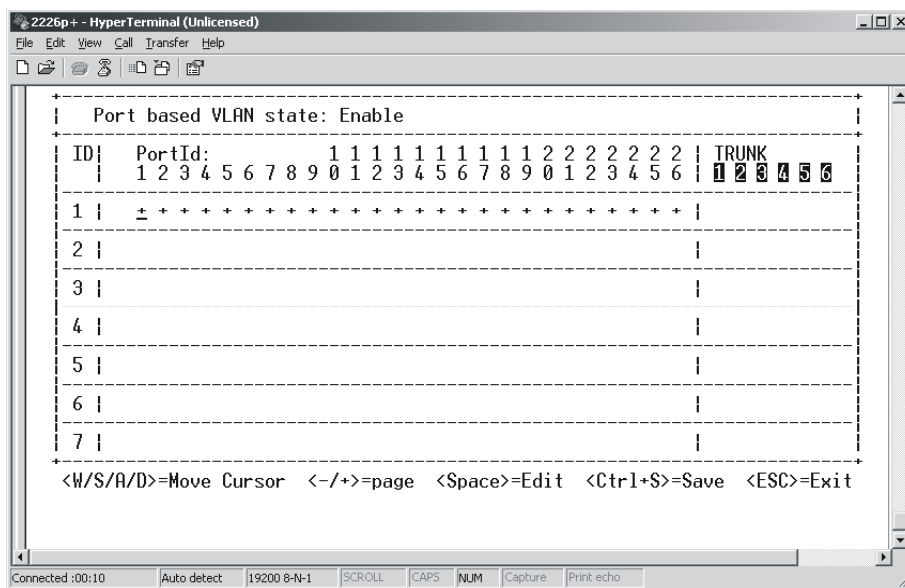


Figure 6-9

Only if current VLAN Mode is Port Based VLAN, you can see this interface, or you will see an error message. If you want to edit VLAN, you can look a trunk as a **big** port.

802.1Q VLAN is as follows.

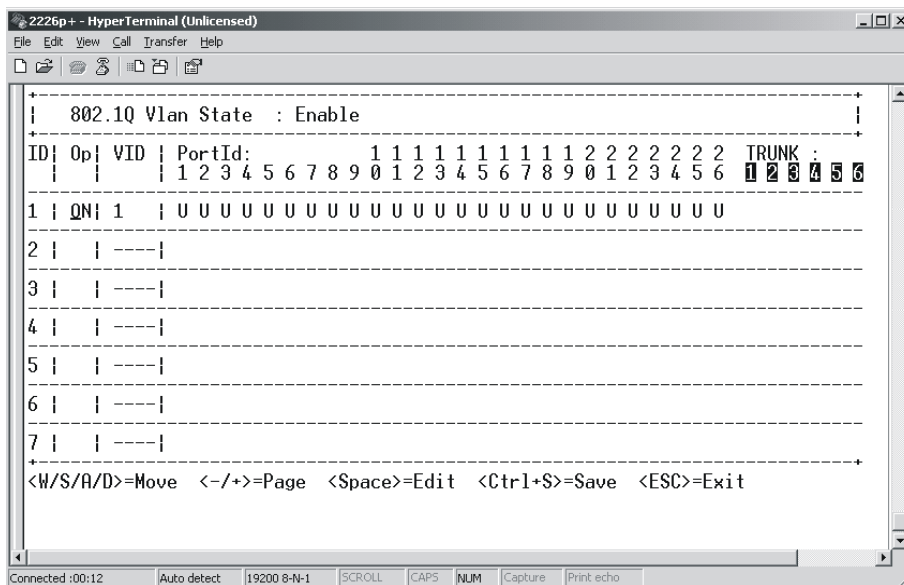


Figure 6-10

Only if the VLAN Mode is 802.1Q VLAN, you can see this interface, or you will see an error message. The configuration method is similar to Port Based VLAN.

If the VLAN state is **DE**, it means the VLAN is invalid. **U** means untag, **T** means tag.

- **TRUNK Management**

TRUNK Management interface as follows:

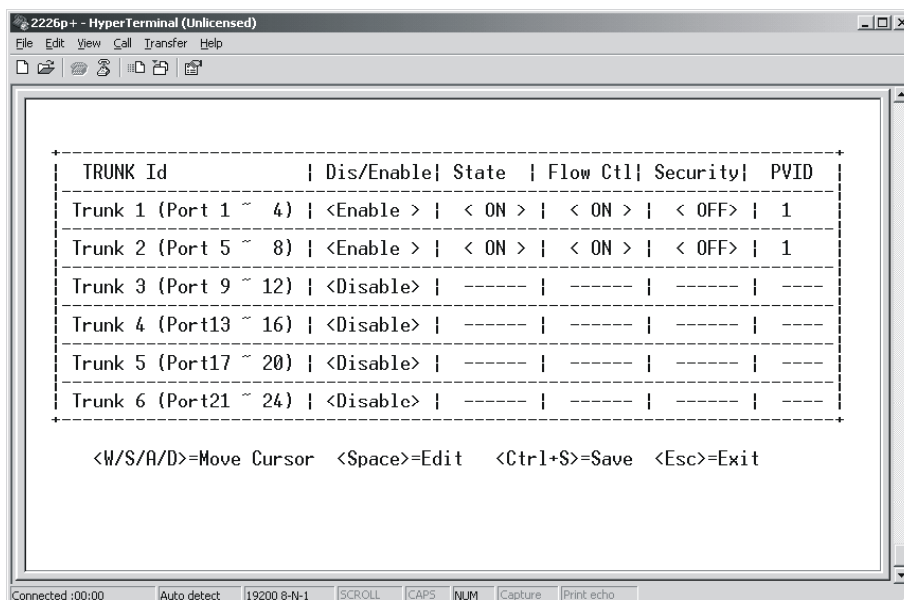


Figure 6-11

Before you enable a TRUNK, you must make the properties of the 4 ports be the same. If you synchronously configure VLAN, in a VLAN, the four ports must exist or be deleted at the same time. If the VLAN Mode is 802.1Q VLAN, the ports must have the same tag

rule when they are in the same VLAN. When you enable or disable a TRUNK, the switch will lose the info of static binding address which is relate to the TRUNK or the 4 ports.

- **MAC Table Aging Time**

MAC Table Aging Time interface is as follows:

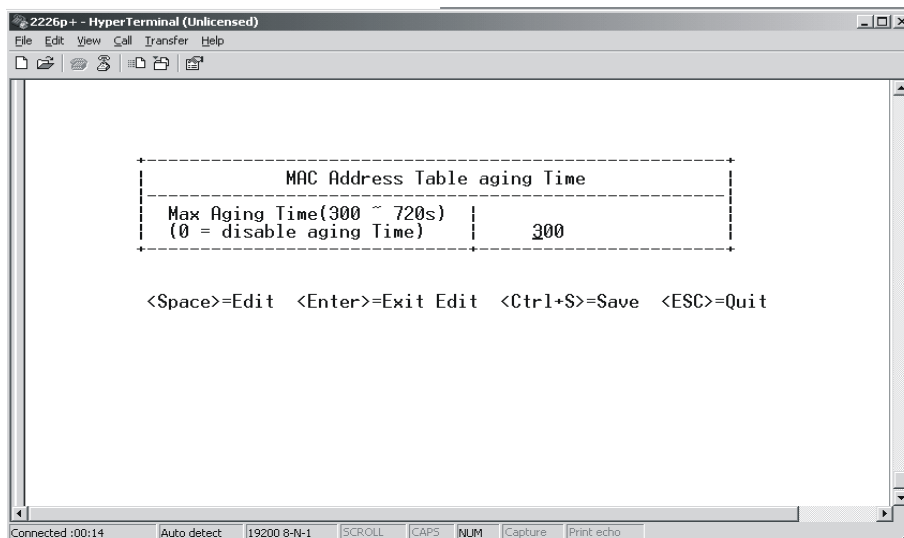


Figure 6-12

- **Priority Management**

Priority Management interface is as follows, when the sate is close, other parameters can't be changed.

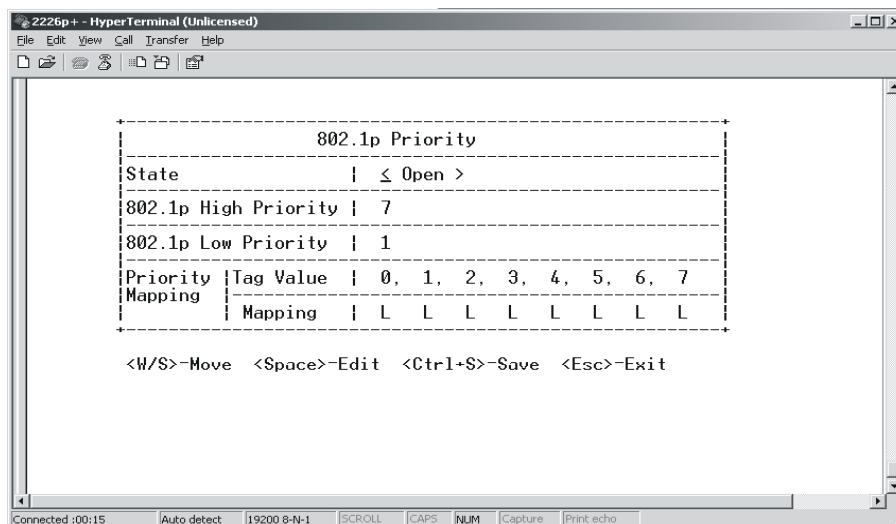


Figure 6-13

- **Static MAC Table**

Static MAC Table interface is as follows:



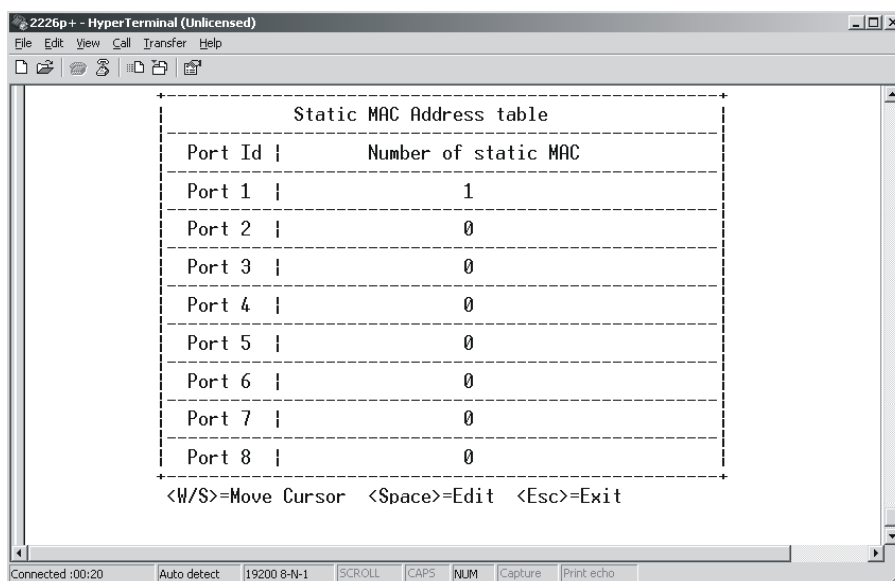


Figure 6-14

Press **Enter**, you will see the interface as follows.

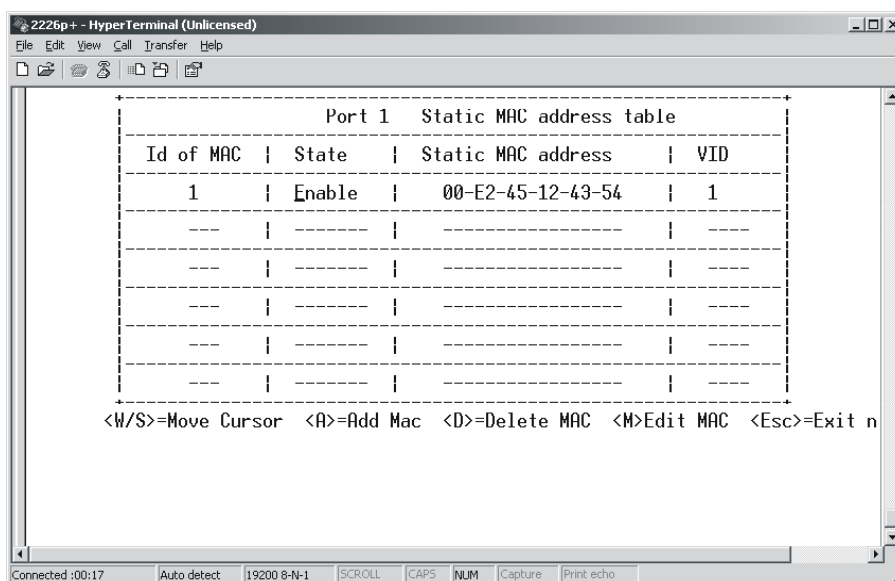


Figure 6-15

There are three operations in Static MAC Table, add, delete and edit. The switch can bind 128 MAC at most, including Enable and Disable.

**Caution:** If you configure the Static MAC Table, it will take effect immediately, you needn't save it.

- **Broadcast Storm**

Broadcast Storm interface is as follows. When Broadcast State is **Disable**, other parameters can't be changed.

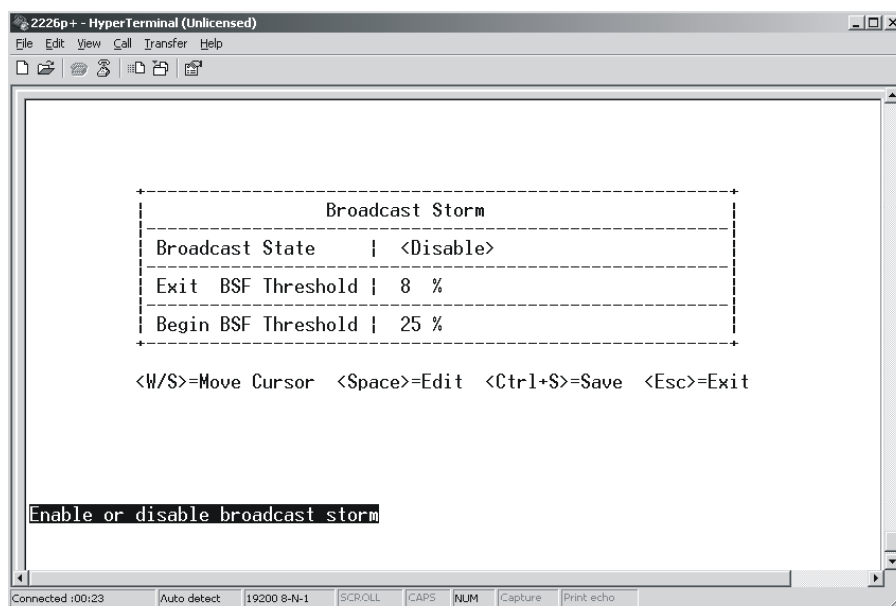


Figure 6-16

## 2) Network Config

Network Config interface is as follows, you can change the switch's IP, gateway, you can not change the switch's MAC address.

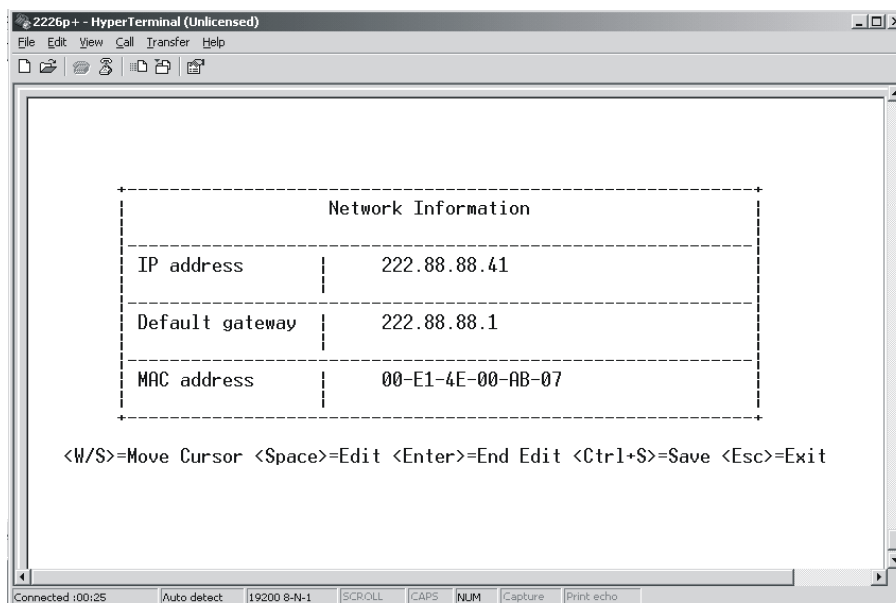


Figure 6-17

Press **w** or **s** key to move cursor, press **space** to edit the switch's IP address, Default gateway. Input the new IP address and gateway, press **enter**. If you input a valid IP or gateway, you will get an error message. If you want to save the configuration, press **ctrl + s** and the switch will restart.

Make sure that the network configuration is correct before you save it. If you don't want to save it, press **Esc** to quit.

### 3) Factory Reset

This operation will lead to factory set of the switch. All config configured by the user will be valid except network config and user password. The operation will make the switch restart.

### 4) Change Password

The password which can be changed is user password, not administrator password. The length of the password is not more than 7, the password can be null. When you log on with user password, if you want to change user password, you should provide the older user password. When you log on with administrator password, you can change the password directly.

### 5) Firmware Update

There are two ways of updating the switch, COM update and TFTP update. Here is an introduction of TFTP update.

#### TFTP update

- Make sure the switch and the PC is well connected through UDP port. You can use **ping** to check whether the PC and the switch can communicate or not. For example, if the switch's IP is 222.88.88.41, you can input **ping 222.88.88.41** in the MS-DOS interface. If ping is ok, that means the PC and the switch is well connected.
- Edit Update\_SF2226P+ 201.bat file which can be download at our website: **www.tp-link.com**. Change the IP 192.168.0.100 into the switch's real IP and save it.
- Log on the switch and run firmware update.
- Before the timer reduces to zero, run Update\_SF2226P+ 201 file and wait till the switch is successfully updated. It will take you about 10-15 seconds.
- If you there is error during updating the switch, the system will give you the prompt, **Rom test fail, update please**, you must update the switch again, or the switch will not work normally.

### 6) Logout system

When you complete the configuration, go back to the main menu, move the cursor to logout system and press enter, then you quit the Out-of-Band management.

**Caution:** If you do not do any operation to the switch for a long time (about 250seconds), the system will logout automatically.

## Appendix A Technical Specifications

### TL-SF2226P+

Standards	IEEE802.3 10BASE-T IEEE802.3u 100BASE-TX/FX
Protocol	CSMA/CD Ethernet
Data Transfer	Ethernet: 10Mbps(half duplex), 20Mbps(full duplex) Fast Ethernet: 100Mbps(half duplex), 200Mbps(full duplex)
Topology	Star
Network Media (Cable)	10Base-T: UTP category 3, 4, 5 cable (100m) 100Base-TX: UTP category 5 cable (100m) 100Base-FX: 9/125µm or 50/125µm or 62.5/125µm fiber cable, SC/ST type
Number of Basic RJ-45 ports	24 UTP/STP MDI/MDIX ports
Module Slot	Two independent module slots
Transmits Method	Store-and-Forward
Power Supply	100-240V ~ 50-60Hz 0.6A (internal universal power supply)
Power Consumption	Lower than 15 watts
Environment	Operating temperature: 0°C~40°C (32°F~104°F) Storage temperature: -40°C – 70°C (-40°F~158°F) Storage humidity: 5% ~ 90% (non-condensing)
Dimension(W x H x D)	17.3 in. × 10.2 in. × 1.9 in. (440mm × 260mm × 47mm)

### TL-SL2226P+

Standards	IEEE802.3 10 Base -T Ethernet IEEE802.3u 100 Base -TX/FX Fast Ethernet IEEE802.3ab 1000 Base -T Giga Ethernet IEEE802.3z 1000 Base -SX/LX Giga Ethernet IEEE802.3 Frame type: Clarity
Protocol	CSMA/CD Ethernet
Data Transfer	Ethernet: 10Mbps(half duplex), 20Mbps(full duplex) Fast Ethernet: 100Mbps(half duplex), 200Mbps(full duplex) Giga Ethernet: 2000Mbps(full duplex)
Topology	Star
Network Media (Cable)	10Base-T: UTP category 3, 4, 5 cable (100m) 100Base-TX: UTP category 5 cable (100m) 1000Base-T: UTP category 5 cable (100m) 100Base-FX: 9/125µm or 50/125µm or 62.5/125µm fiber cable, SC/ST type 1000Base-SX/LX: 9/125µm or 50/125µm or 62.5/125µm fiber cable, SC/ST type
Number of Basic RJ-45 ports	24 UTP/STP MDI/MDIX ports

**TL-SF2226P+/TL-SL2226P+ Remote Smart Switch User Guide**

Module Slot	Two independent module slots
Transmits Method	Store-and-Forward
Power Supply	100-240V ~ 50-60Hz 0.6A (internal universal power supply)
Power Consumption	Lower than 15 watts
Environment	Operating temperature: 0°C ~ 40°C (32°F~104°F) Storage temperature: -40°C – 70°C (-40°F~158°F) Storage humidity: 5% ~ 90% (non-condensing)
Dimension(W x H x D)	17.3 in. × 10.2 in. × 1.9 in. (440mm × 260mm × 47mm)

## Free Manuals Download Website

<http://myh66.com>

<http://usermanuals.us>

<http://www.somanuals.com>

<http://www.4manuals.cc>

<http://www.manual-lib.com>

<http://www.404manual.com>

<http://www.luxmanual.com>

<http://aubethermostatmanual.com>

Golf course search by state

<http://golfingnear.com>

Email search by domain

<http://emailbydomain.com>

Auto manuals search

<http://auto.somanuals.com>

TV manuals search

<http://tv.somanuals.com>