



# TRENDNET



## User's Guide

### TVP-SP1BK



## Federal Communication Commission Interference Statement

This equipment has been tested and found to comply with the limits for a Class B digital device, pursuant to Part 15 of the FCC Rules. These limits are designed to provide reasonable protection against harmful interference in a residential installation. This equipment generates, uses and can radiate radio frequency energy and, if not installed and used in accordance with the instructions, may cause harmful interference to radio communications. However, there is no guarantee that interference will not occur in a particular installation. If this equipment does cause harmful interference to radio or television reception, which can be determined by turning the equipment off and on, the user is encouraged to try to correct the interference by one of the following measures:

- Reorient or relocate the receiving antenna.
- Increase the separation between the equipment and receiver.
- Connect the equipment into an outlet on a circuit different from that to which the receiver is connected.
- Consult the dealer or an experienced radio/TV technician for help.

FCC Caution: Any changes or modifications not expressly approved by the party responsible for compliance could void the user's authority to operate this equipment.

This device complies with Part 15 of the FCC Rules. Operation is subject to the following two conditions: (1) This device may not cause harmful interference, and (2) this device must accept any interference received, including interference that may cause undesired operation.

### **IMPORTANT NOTE:**

#### **FCC Radiation Exposure Statement:**

This equipment complies with FCC radiation exposure limits set forth for an uncontrolled environment. This device complies with FCC RF Exposure limits set forth for an uncontrolled environment, under 47 CFR 2.1093 paragraph (d)(2).

This transmitter must not be co-located or operating in conjunction with any other antenna or transmitter.

This equipment has been SAR-evaluated for use in laptops (notebooks) with side slot configuration.



# Table Contents

Introduction.....	4
Getting to know the Telephone Kit.....	4
Minimum System Requirements .....	4
Unpacking and Checking the Contents.....	4
Identifying Components.....	5
Getting Started .....	6
Setting up the telephone kit.....	6
Software Installation .....	6
Appliactions Installed.....	11
Exploring the Telephone kit Menu .....	14
Icons shown on the Handset.....	14
Function Keys:.....	15
Configurations .....	15
Guide to Basic Functions.....	16
How to call skype contact?.....	16
How to call an ordinary phone number (skype out)? .....	16
How to answer a call? .....	16
How to make a conference call? .....	16
How to redial outgoing calls? .....	17
How to redial any call from History?.....	17
How to mute microphone when you are on call? .....	17
Appendix .....	18
Toshiba Bluetooth Utility Contents .....	18
Specifications.....	22
Troubleshooting.....	23

# Introduction

Welcome to the VoIP Bluetooth Phone Kit manual. In this manual, you will learn how to use this Phone Kit to do all popular Skype standard functions, such as Contacts, History, SkypeOut, SkypeIn, Conference Call etc. This Phone kit enables you to make and receive Skype calls anywhere, without being in front of the PC. With a long life rechargeable Lithium battery, this Phone kit can sustain up to 6 hours talking time, so you don't need to speak in rush every time.

## Key Features

- Support long range Bluetooth class 1 standard that reaches up to 100 meters distance in outdoor clean environment.
- Feature easy of use graphical user interface.
- Support long life Lithium rechargeable battery.
- Support advanced power down management to extend battery life.
- Support USB-port charging while traveling on the road.

# Getting to know the Telephone Kit

## Minimum System Requirements

- PC running Windows XP, 2000
- Skype software installed
- At least 400 MHz processor
- At least 128 MB RAM
- At least 50MB free disk space on your hard drive
- CD-ROM drive

## Unpacking and Checking the Contents

### Packing content

- TVP-SP1B Bluetooth VoIP Phone
- TBW-104UB Advanced High Power Bluetooth USB Adapter
- 700 mAh Li-on battery
- 1m/3ft. USB cable
- Quick Guide
- CD (with software, driver, utility and user's guide)

# Identifying Components

**TBW-104UB**



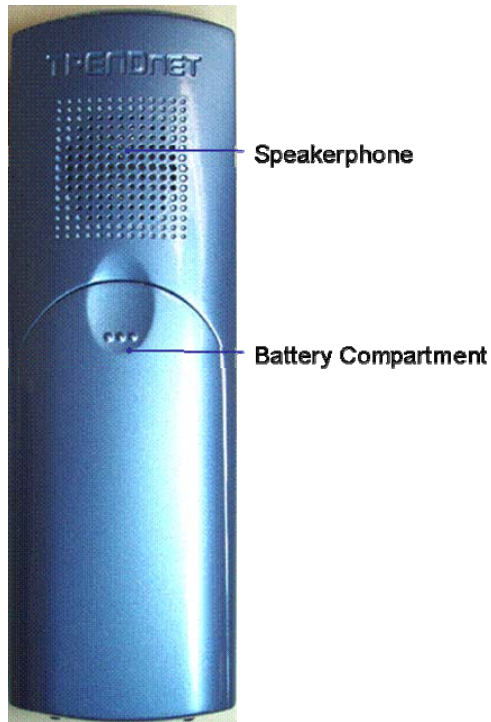
**TVP-SP1B**



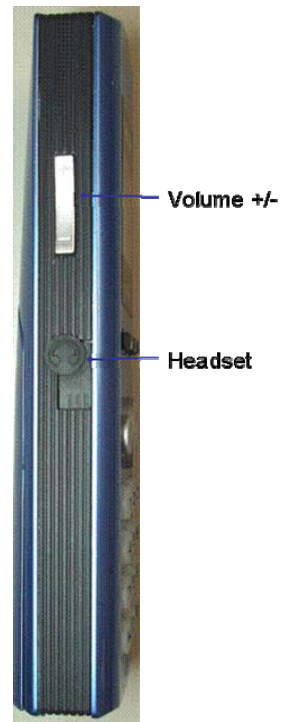
**TVP-SP1B**  
**Front View**



### Back View



### Side View



## Getting Started

### Setting up the telephone kit

1. Place the included 700 mAh Li-on battery into the TVP-SP1B's battery compartment
2. Connect USB cable to charge battery pack (please let the battery charge for a full 6 hours before using the phone for the first time)

### Software Installation

1. Turn on your PC
2. Please insert the Utility CD into CD-ROM drive, and then follow the instruction below to install Bluetooth software.

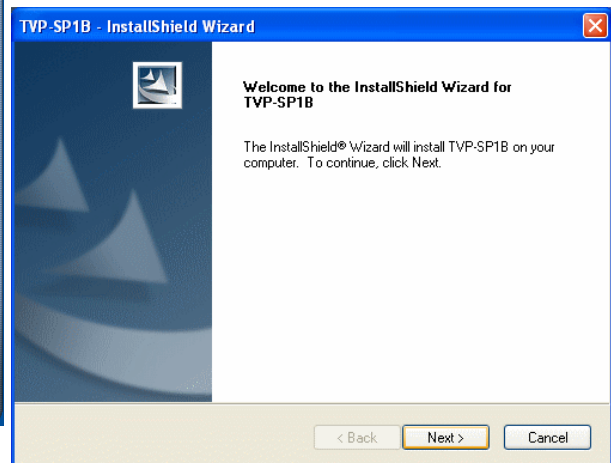
**Note: DO NOT plug the USB Adapter into the USB port before software installation**

3. Follow the directions on your screen to install Phone Utility and Adapter driver.

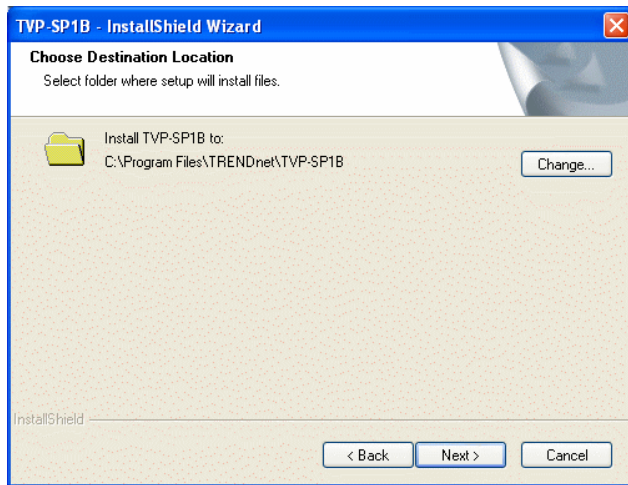
1. Click "Install Driver/Utility" to start



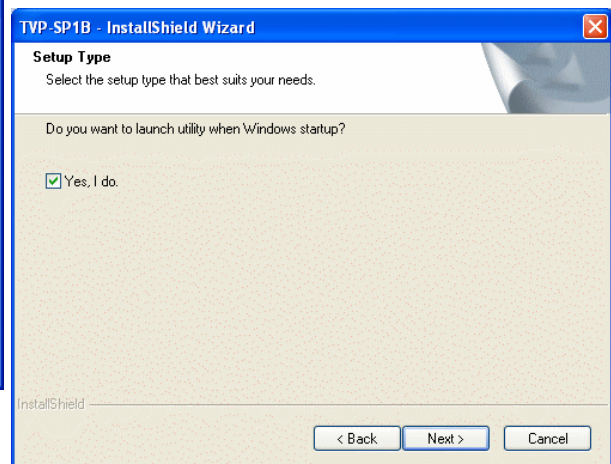
2. Click "Next" to continue



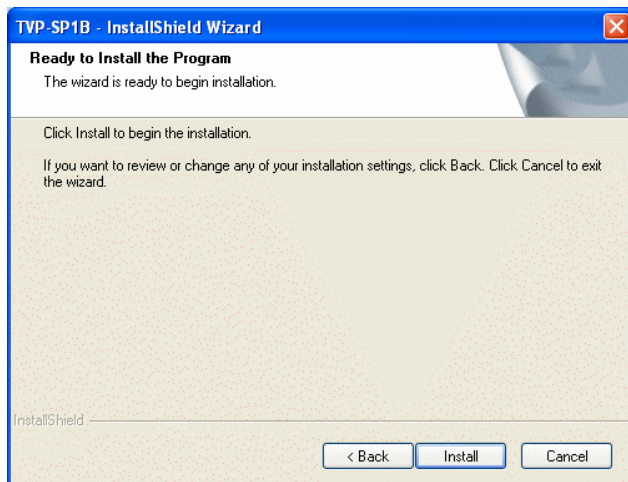
3. Please Click "Next".



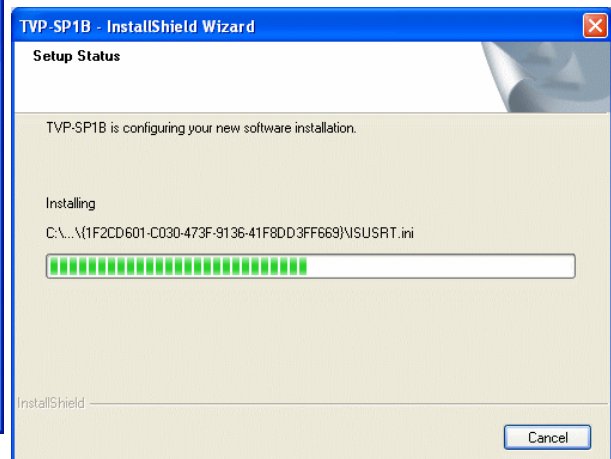
4. Please check "Yes, I do." to launch utility when Windows startup.



5. Please Click "Next".

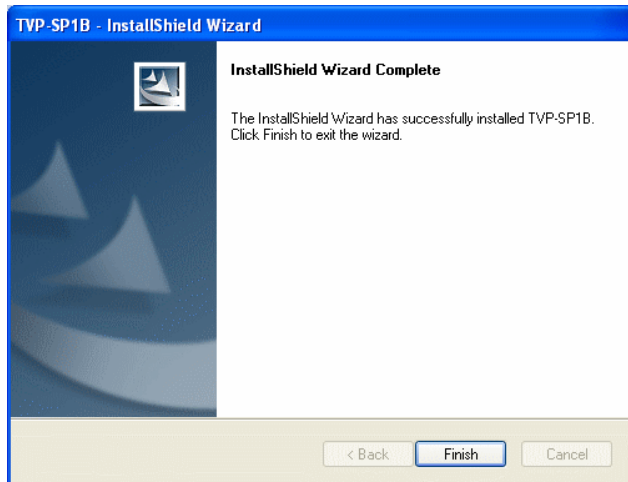


6. Installing





7. Please Click “Finish” to complete TVP-SP1B installation.



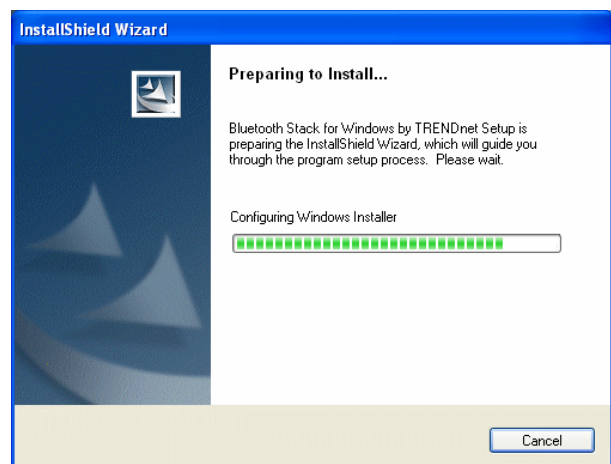
8. The installation will continue with Bluetooth adapter installation. Click “Yes” to install Bluetooth driver now.



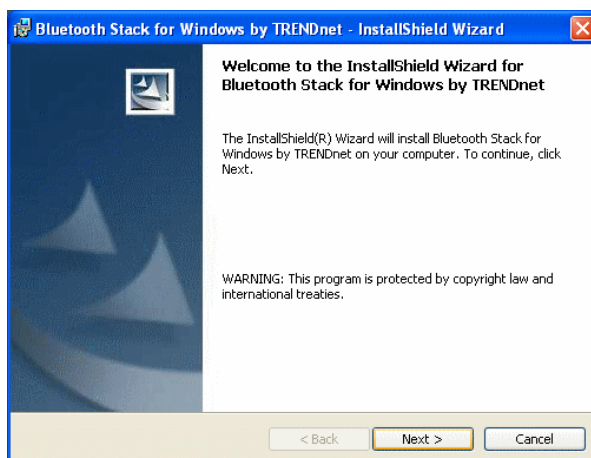
9. Select language for installation



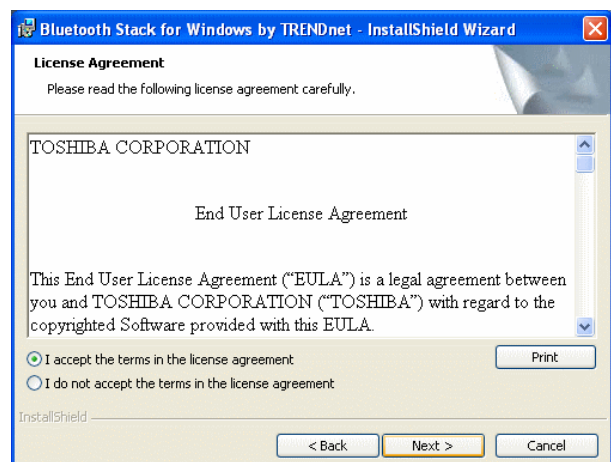
10. Installing



11. Please Click “Next”

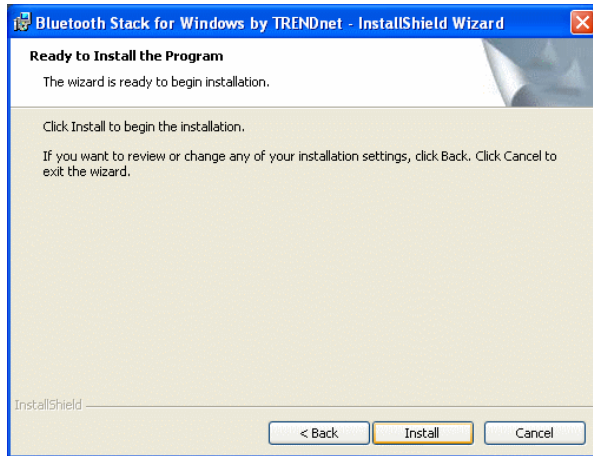


12. Please check “I accept the terms in the license agreement” and then click “Next”.

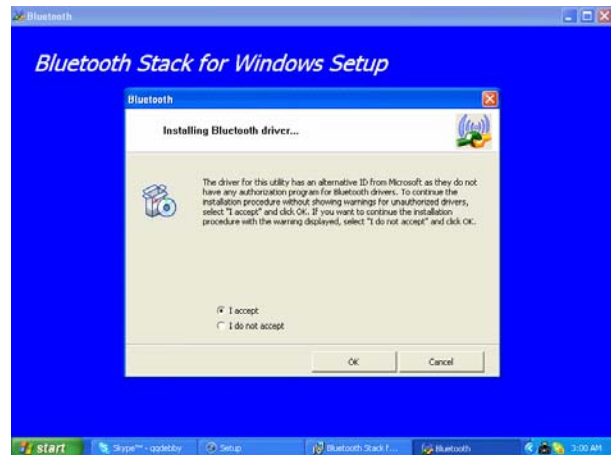




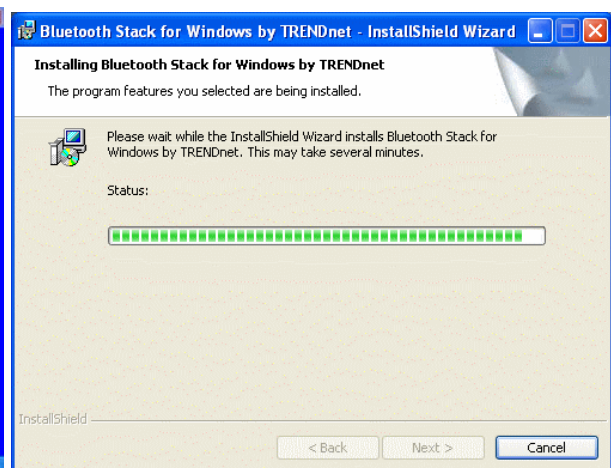
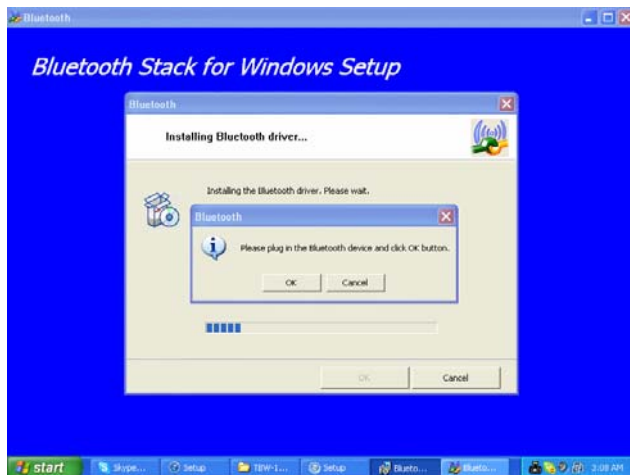
13. Please Click "Install" to start installation.



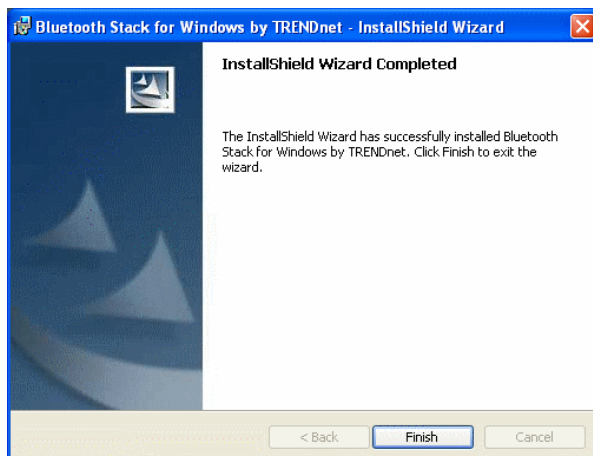
14. Please choose "I accept" and then click "OK"



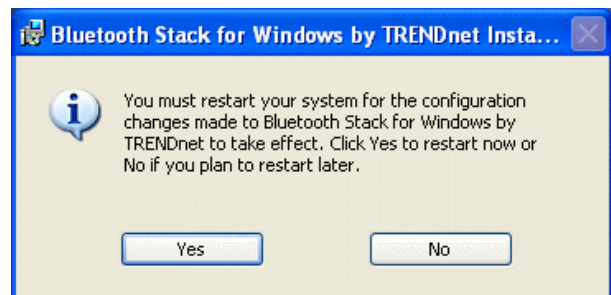
15. Installation will ask you plug Bluetooth Device into USB port, please plug TBW-104UB into USB port then click "OK" to continue



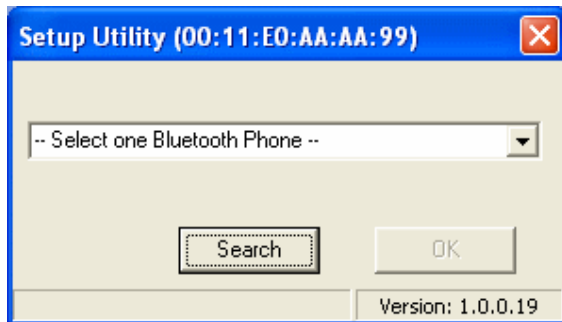
17. Click "Finish" to complete installation.



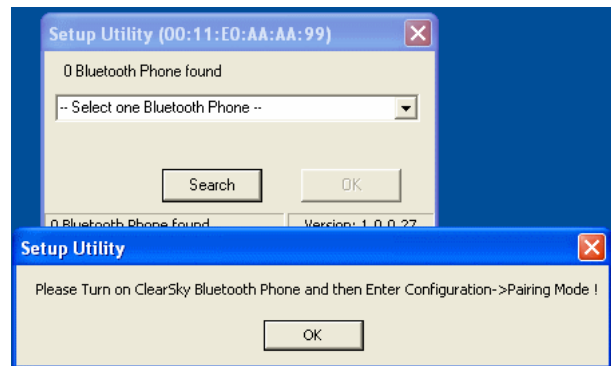
18. Please click "Yes" to restart your computer.



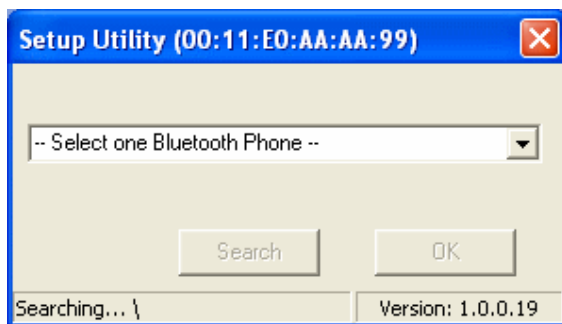
19. After the Computer is rebooted, Double click on the Bluetooth VoIP Phone icon and Click "Search"



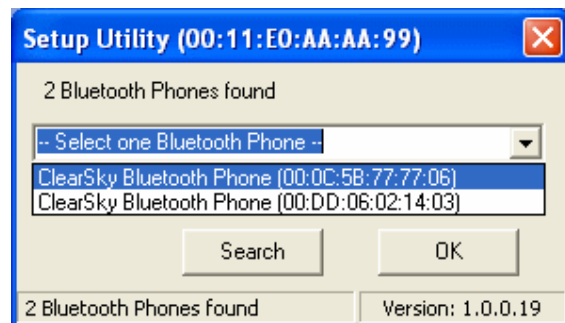
20. Prepare for pairing. Please turn on CleraSky Bluetooth Phone



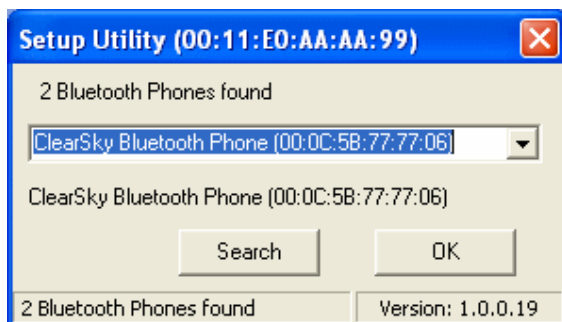
21. Setup Utility is searching for Bluetooth Phones



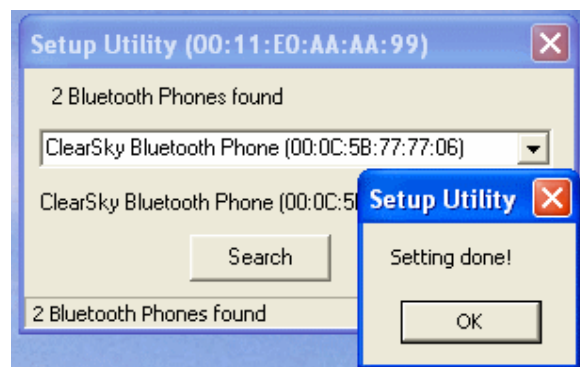
22. Select your Bluetooth Phone. (Please check the MAC address to select the right one. Please remove the battery to find MAC address label)



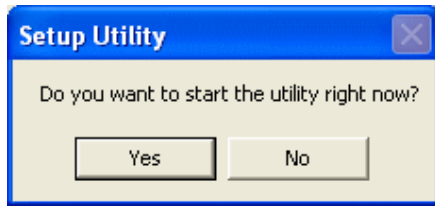
23. Please click "OK" to finish bluetooth device pairing.



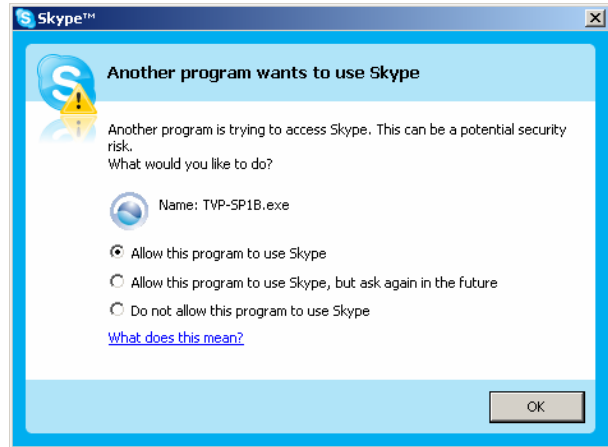
24. Please Click "OK" to finish pairing process.



25. Please Click “Yes” to launch Bluetooth Phone Utility



26. Please Choose “Allow this program to use Skype” and then click “OK”.






## Applications Installed

After you finish above installations, “Bluetooth” and “TRENDnet TVP-SP1B” items will be added to Windows Start Menu Programs group.

### Bluetooth

The Bluetooth icon in windows system tray will indicate Bluetooth status by changing appearance.

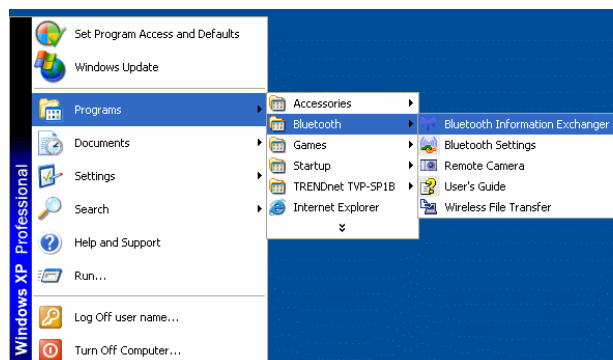
- Blue with Red: services are disabled. 
- Blue with White: services are enabled. 
- Blue with Green: services are connected. 

### Contents of the Bluetooth Utility

1. Bluetooth Information Exchanger:

This program enables you to transfer files and images to a wireless device.

For details, please refer to Bluetooth->User’s Guide.

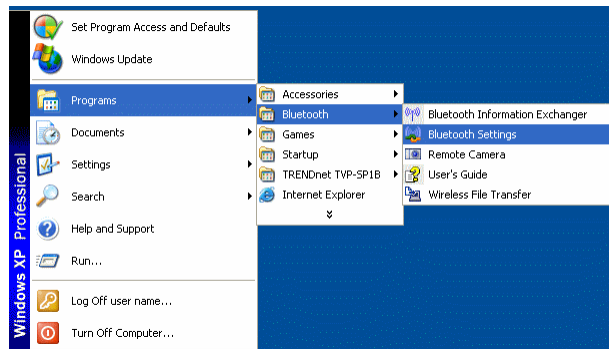




## 2. Bluetooth Settings:

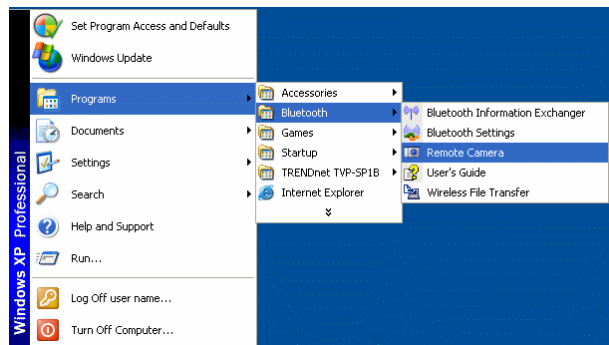
This program enables you to configure settings when you connect to a Bluetooth wireless technology device for the first time.

For details, please refer to Bluetooth->User's Guide.



## 3. Remote Cameras

When you connect to a Bluetooth wireless technology-compatible digital camera, you can operate it from the PC side and send captured images to the PC.



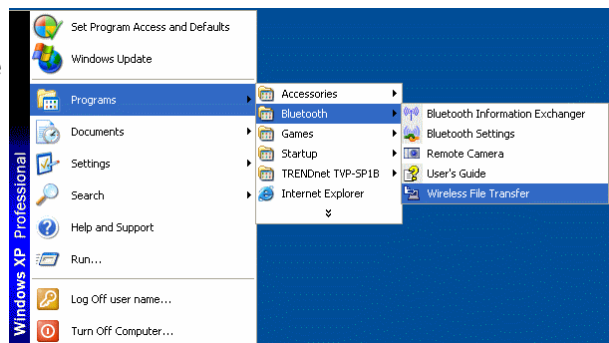
## 4. User's Guide:

This Bluetooth Utilities User Guide helps you understand Bluetooth settings and troubleshooting.




## 5. Wireless File Transfer:

You can send a file wirelessly to another device by right-clicking on the intended file and using the "Sending to Bluetooth Device" menu that appears.



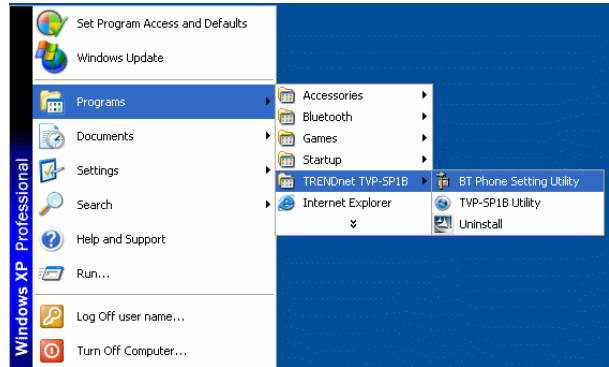
## TRENDnet TVP-SP1B Phone Utility

Phone Utility icon (  ) in system tray can display phone utility version and has one “Exit” function by right-clicking to quit this utility.

### Contents of the “TRENDnet TVP-SP1B” Utility

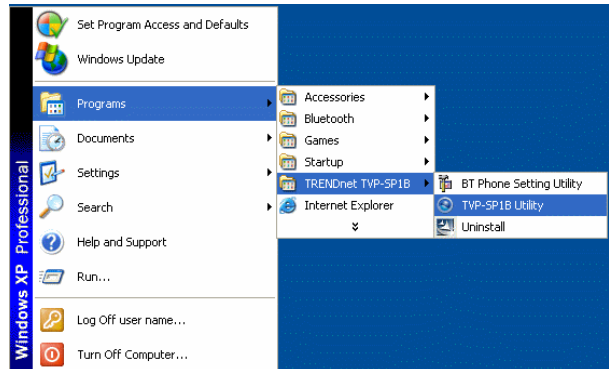
#### 1. BT Phone Setting Utility:

This utility help you pair Clearsky Bluetooth Phone with USB bluetooth adapter.



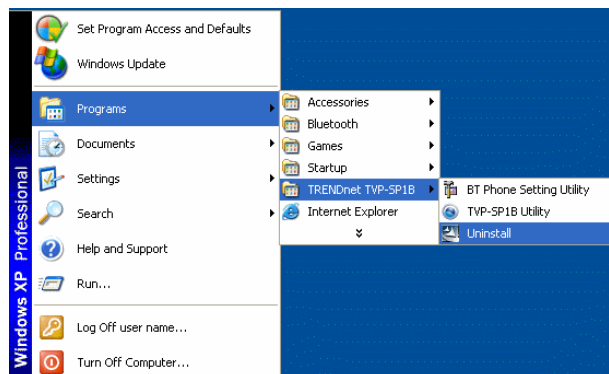
#### 2. TVP-SP1B Utility:

This is the main program which enables you doing skype functions from this Bluetooth phone.



#### 3. Uninstall:

Remove the TVP-SP1B phone utility from your computer.



# Exploring the Telephone kit Menu

## Icons shown on the Handset



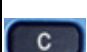





Icon	Meaning	Icon	Meaning
<b>A: Mode</b>			
	Homepage		Contacts
	Ringing		Configuration
	Configuration→Status		Configuration→History
	Call with contacts		
<b>B: Volume</b>			
	Volume 0		n=1~9
<b>C: My Status</b>			
	Online		Away
	Not Available		Do Not Disturb
	SkypeMe		Offline
	Invisible		
<b>D: Battery Status</b>			
	Battery Full (The black area reduces as the battery runs low)		Battery Empty
	Charging		Battery Full (while charging)
<b>E: Contact's Status</b>			
	Online		Away
	Not Available		Do Not Disturb
	Skypeme		Offline
	Skype out account		




## Function Keys:



	Sync Contacts		Configuration
	Cancel, Back		Off-hook, Make a call, Answer a call, Redial
	Up/Down		Power ON/OFF, On-hook (hand-up) End a call, Back to Home

## Configurations






Press  to enter configuration mode

### Function in configurations



Functions	Descriptions
History→Missed	Display Missed call lists
History →Incoming	Display Incoming call lists
History →Outgoing	Display Outgoing call lists
Status	Change my status. Status options: “Online”, “Away”, “N/A”, “Not Disturb”, “Invisible”, “Offline”, “Skypeme”
Skype Credit	Showing how many skype out credits you have
Ringtone	Select Ring tones
Pairing	Let Bluetooth Phone enter Pairing Mode
Headset	Enter Headset Mode. Bluetooth Phone acts as a headset to support audio over MSN Messenger, Yahoo Messenger and more
F/W Version	Showing F/W version installed in your TVP-SP1B

# Guide to Basic Functions


## How to call skype contact?

1. Press  3 sec. → Wait until phone shows “Clearsky on” → press  to sync contact lists with PC skype
2. Use List button  to scroll up/down the contact lists
3. Press  to start a call.
4. Press  to disconnect this call

## How to call an ordinary phone number (skype out)?




1. Enter “+”+phone number you want to call. (Press  to delete an incorrect digit)
2. Press  to start a call.

## How to answer a call?

1. Press  to answer any incoming call.



## How to make a conference call?

### A. invite another contact when you are chatting



1. Press  → Make 1<sup>st</sup> call
2. Press  to invite 2<sup>nd</sup> contact → Press  to place call
3. Choose “CON CALL” **1. P2P CALL** **2. CON CALL** to invite 2<sup>nd</sup> contact to join this conference call with 1<sup>st</sup> contact

4. Choose "P2P CALL" to hold 1<sup>st</sup> call and talk to 2<sup>nd</sup> contact.











## B. invite contacts and conference them together

1. Press  to go to the contact list menu.
2. Press "\*" to mark the contact you want to include in this conference call. (Conference participants (max 4+host))
3. Press  to start this conference call

## How to redial outgoing calls?

1. Press  to show outgoing call lists.
2. Select the contact (from the outgoing call list) you want to dial to make a call.
3. Press  to make a call

## How to redial any call from History?

1. Redial from Missed Calls: Press  → History  → Missed → Choose one contact to dial.  (press  to cancel this action and go back to home)
2. Redial from Incoming Calls: Press  → History  → Incoming Calls → Choose one contact to dial. 
3. Redial from Outgoing Calls: Press  → History  → Outgoing Calls → Choose one contact to dial. 

## How to mute microphone when you are on call?

During a call, if you wish to speak to someone privately

1. Press "4" to mute microphone.
2. Press "6" to unmute microphone



# Appendix

## Toshiba Bluetooth Utility Contents

### Bluetooth Functions

Toshiba Bluetooth stack supports the following Bluetooth functions (profiles)

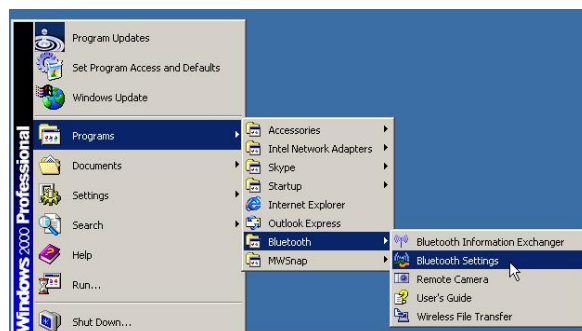
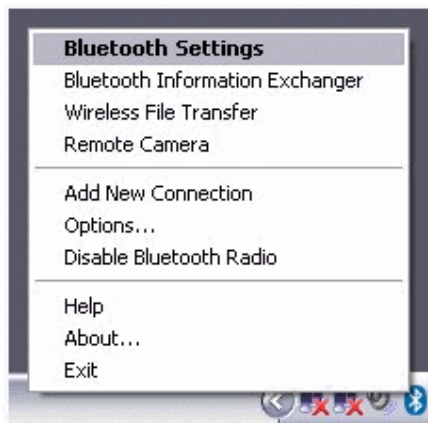
Term	Definition
DUN	<b>Dial-Up Networking</b> Enables you to establish a dial-up Bluetooth™ wireless technology connection to the Internet or other networks with a wireless modem station, mobile telephone, or similar device.
FAX	<b>FAX</b> Enables you to establish a Bluetooth™ wireless technology connection with a wireless modem station, mobile telephone, or similar device to send or receive a fax.
LAP	<b>LAN Access Profile</b> Enables you to establish a Bluetooth™ wireless technology connection with a LAN access point to access the services of a LAN using PPP.
SPP	<b>Serial Port Profile</b> Enables communication with a device through a virtual serial port configured for a Bluetooth™ wireless technology connection. This can be used for printers and printer adapters with PDAs, using a different method from HCRP or ActiveSync.
HID	<b>Human Interface Device Profile</b> Allows connections to wireless mice, keyboards and other input devices.
HCRP	<b>Hardcopy Cable Replacement Profile</b> Enables printing with a printer driver.
FTP	<b>File Transfer Profile</b> Enables you to browse folders on a wireless device and transfer files to and from the local device.
OPP	<b>Object Push Profile</b> Allows business card data to be exchanged with a wireless device.

<b>A2DP</b>	<b>Advanced Audio Distribution Profile</b> Allows audio data to be exchanged between wireless headsets and other audio devices, as well as allowing high-quality music playback.
<b>AVRCP</b>	<b>Audio/Video Remote Control Profile</b> A/V remote control functions such as play and stop. The Bluetooth™ Utility supports remote control operation.
<b>GAVDP</b>	<b>Generic Audio/Video Distribution Profile</b> Basic profile used to support A2DP, AVRCP and other protocols.
<b>HSP</b>	<b>Head Set Profile</b> Profile used for headsets. Allows you to connect to a PC and communicate as well as connect to a mobile telephone.
<b>PAN</b>	<b>Personal Area Networking Profile</b> Supports IP base network. Allows connection to an ad-hoc or wired network via an access point.
<b>BIP</b>	<b>Basic Imaging Profile</b> Allows image files to be sent and received after having been converted to a size suitable for the destination. In addition to being able to transfer image files, the Bluetooth™ Utility allows camera shutters to be operated by remote control, as well as other offering other functionalities.

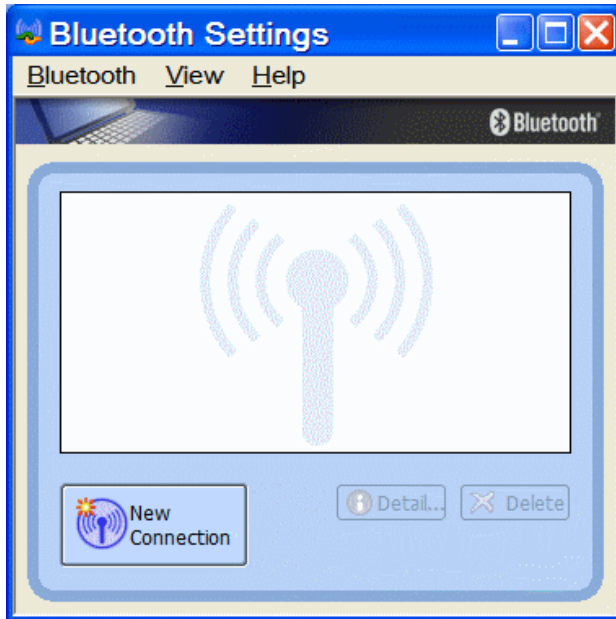
## Bluetooth Settings

1. Right-click on the Bluetooth™ wireless technology icon in the task tray, and select [Bluetooth Settings] from the menu that appears.

Alternatively, click [Start]→[All Programs]→[Bluetooth]→[Bluetooth Settings].



2. Please Click “New Connection” to add new Bluetooth device.



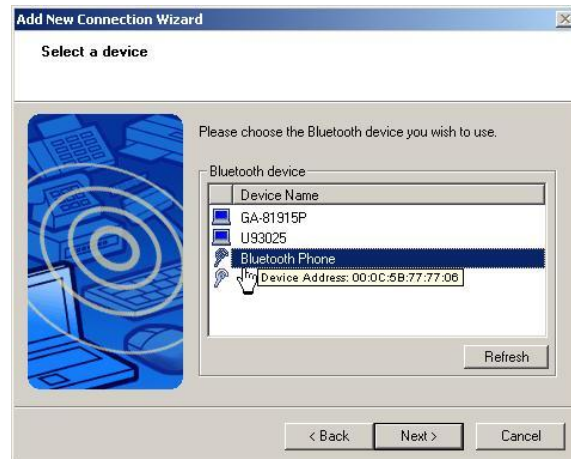
3. Please choose “Express Mode”



4. Searching for Bluetooth devices



5. Select the device name from [Device List] and click on the [Next] button.





## 6. Please Click “Next”



## 7. Searching remote devices



8. When a service has been detected, a window prompting you to enter the Bluetooth passkey (PIN code) may appear. Please enter the passkey and click on the [OK] button. Please refer to your device instruction manual for information on which passkey to use.

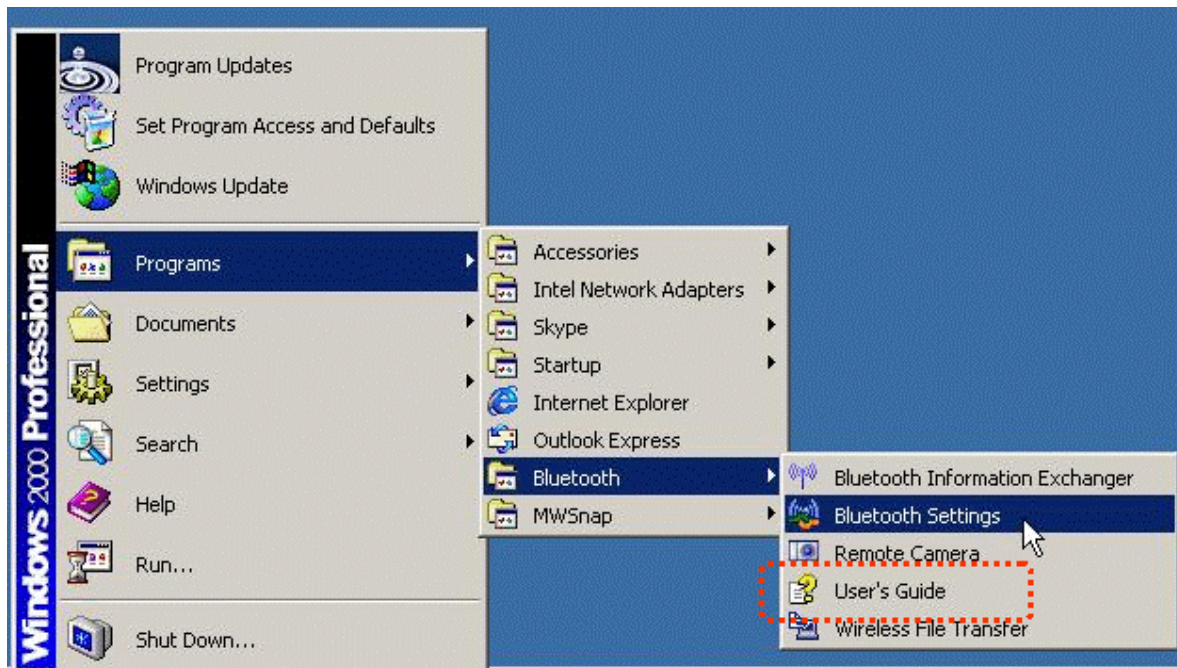


9. The icons of the registered devices will appear and the devices will be ready to use.



## On-line User Guide

When you have troubles in using Toshiba Bluetooth stack, please get on-line help by click Bluetooth->User's Guide



## Specifications

<b>RF Standard</b>	Class 1 Bluetooth v2.0 with EDR, backward compatible with Bluetooth v1.1 & v1.2
<b>RF Frequency</b>	2.4~2.4835 GHz, ISM band
<b>Spread Spectrum</b>	Frequency Hopping and Adaptive Frequency Hopping
<b>RF Output Power</b>	Up to 17 dBm
<b>Display</b>	96 x 64 pixel, graphical type STN LCD with back light
<b>Interfaces</b>	<ul style="list-style-type: none"> <li>■ One mini-USB connector for charging from computer USB port or external power adapter</li> <li>■ One earphone jack at 2.5 mm</li> <li>■ Built-in mono-earpiece, microphone</li> </ul>
<b>LED Indicator</b>	Handset status (active, standby, sleep, etc....)
<b>Battery</b>	3.6V 700 mAh Lithium-ion rechargeable and user replaceable battery pack
<b>Power</b>	<ul style="list-style-type: none"> <li>■ Can be charged through computer USB port</li> <li>■ Power Adapter: DC 5V, 1A with mini-USB interface AC 100~240V (option)</li> </ul>
<b>Antenna</b>	One internal antenna
<b>Consumption</b>	Standby: 60+ hrs, Talking: 6+ hrs continuous talking
<b>Dimension</b>	143.5 (L) x 45 (W) x 22 (D) mm
<b>Environmental Condition</b>	Operating Temperature: 0 ~50° C , Humidity:10 ~ 90% Storage Temperature: -20 ~70° C, Humidity:10 ~ 90%
<b>Certifications</b>	FCC, CE

# Troubleshooting

**Problem: Press “Power on” button, but nothing happen, no display**

**Solution:**

1. Make sure the included rechargeable battery is fitted in the handset correctly.
2. Please press “Power on” button for about 3 sec. until you see an icons.

**Problem: Pop up a Bluetooth Security window**

**Solution:**

1. Bluetooth PIN should be self-assigned when pairing with Bluetooth phone. If this window pop up, please input default Bluetooth PIN: “0000”.



**Question: How to distinguish standby mode and power-off mode**

**Answer:** Please check LED, if LED not blinking, Bluetooth phone is in power-off mode. If LED blinks every 5 seconds, Phone is in standby mode.

**Problem: When you press “contact” (  ), LCD keeps showing “connecting...” and phone cannot connect to your PC skype.**

**Solution:**

1. Please check the Bluetooth icons in system tray. You must wait until this icon turn to blue with green appearance.
2. If the Bluetooth icons is blue with green, but LCD keeps showing “connecting...” when you press “contact”, please quit phone utility, by right-clicking phone utility icon and click “Exit” and then launch Bluetooth VoIP Phone utility again.
3. If you cannot quit phone utility by right-clicking phone utility icon, please press “Ctrl-Alt-Del” to run Windows Task Manager and then disconnect “TVP-SP1B” application
4. If Windows Task Manager cannot disconnect “TVP-SP1B”, please restart your computer.

**Problem: No response on your phone (LCD stuck in the same page no matter which key you enter).**

**Solution:** Please remove battery to restart your Bluetooth phone.

**Problem: PC music plays in Bluetooth phone**

**Solution:** When you finish installation, system default audio device will be set to Bluetooth wave. If you want to change back to PC original default audio device, please go to Settings→Control Panel→Sounds and Audio Devices→Audio to choose default device.

**Problem: Why can I just invite one contact to join my current call?**

**Solution:** If you need to hold a conference call with more than 2 contacts, please choose contacts first and then make a conference call. For “join” function, our phone just allow one participant to join current call.

**Problem: Another ringer during my conversation**

**Solution:** This means another incoming call is waiting for your response. You can answer this call and hold current one by pressing “off-hook” or reject this incoming call by pressing “on-hook”

**Question: What’s the time period before the phone goes into standby mode?**

**Answer: 3 minutes**

**Problem: One warning sound made by Bluetooth phone**

**Solution:** This might be “low battery warning” signal. Please check your battery icon to see when it shows “no”. Please use the included USB cable to charge Bluetooth phone.



## Limited Warranty

TRENDware warrants its products against defects in material and workmanship, under normal use and service, for the following lengths of time from the date of purchase.

### TVP-SP1BK – 2 Years Warranty

If a product does not operate as warranted above during the applicable warranty period, TRENDware shall, at its option and expense, repair the defective product or part, deliver to customer an equivalent product or part to replace the defective item, or refund to customer the purchase price paid for the defective product. All products that are replaced will become the property of TRENDware. Replacement products may be new or reconditioned.

TRENDware shall not be responsible for any software, firmware, information, or memory data of customer contained in, stored on, or integrated with any products returned to TRENDware pursuant to any warranty.

There are no user serviceable parts inside the product. Do not remove or attempt to service the product by any unauthorized service center. This warranty is voided if (i) the product has been modified or repaired by any unauthorized service center, (ii) the product was subject to accident, abuse, or improper use (iii) the product was subject to conditions more severe than those specified in the manual.

Warranty service may be obtained by contacting TRENDware office within the applicable warranty period for a Return Material Authorization (RMA) number, accompanied by a copy of the dated proof of the purchase. Products returned to TRENDware must be pre-authorized by TRENDware with RMA number marked on the outside of the package, and sent prepaid, insured and packaged appropriately for safe shipment.

**WARRANTIES EXCLUSIVE:** IF THE TRENDWARE PRODUCT DOES NOT OPERATE AS WARRANTED ABOVE, THE CUSTOMER'S SOLE REMEDY SHALL BE, AT TRENDWARE'S OPTION, REPAIR OR REPLACEMENT. THE FOREGOING WARRANTIES AND REMEDIES ARE EXCLUSIVE AND ARE IN LIEU OF ALL OTHER WARRANTIES, EXPRESSED OR IMPLIED, EITHER IN FACT OR BY OPERATION OF LAW, STATUTORY OR OTHERWISE, INCLUDING WARRANTIES OF MERCHANTABILITY AND FITNESS FOR A PARTICULAR PURPOSE. TRENDWARE NEITHER ASSUMES NOR AUTHORIZES ANY OTHER PERSON TO ASSUME FOR IT ANY OTHER LIABILITY IN CONNECTION WITH THE SALE, INSTALLATION MAINTENANCE OR USE OF TRENDWARE'S PRODUCTS.

TRENDWARE SHALL NOT BE LIABLE UNDER THIS WARRANTY IF ITS TESTING AND EXAMINATION DISCLOSE THAT THE ALLEGED DEFECT IN THE PRODUCT DOES NOT EXIST OR WAS CAUSED BY CUSTOMER'S OR ANY THIRD PERSON'S MISUSE, NEGLIGENCE, IMPROPER INSTALLATION OR TESTING, UNAUTHORIZED ATTEMPTS TO REPAIR OR MODIFY, OR ANY OTHER CAUSE BEYOND THE RANGE OF THE INTENDED USE, OR BY ACCIDENT, FIRE, LIGHTNING, OR OTHER HAZARD.

LIMITATION OF LIABILITY: TO THE FULL EXTENT ALLOWED BY LAW TRENDWARE ALSO EXCLUDES FOR ITSELF AND ITS SUPPLIERS ANY LIABILITY, WHETHER BASED IN CONTRACT OR TORT (INCLUDING NEGLIGENCE), FOR INCIDENTAL, CONSEQUENTIAL, INDIRECT, SPECIAL, OR PUNITIVE DAMAGES OF ANY KIND, OR FOR LOSS OF REVENUE OR PROFITS, LOSS OF BUSINESS, LOSS OF INFORMATION OR DATA, OR OTHER FINANCIAL LOSS ARISING OUT OF OR IN CONNECTION WITH THE SALE, INSTALLATION, MAINTENANCE, USE, PERFORMANCE, FAILURE, OR INTERRUPTION OF THE POSSIBILITY OF SUCH DAMAGES, AND LIMITS ITS LIABILITY TO REPAIR, REPLACEMENT, OR REFUND OF THE PURCHASE PRICE PAID, AT TRENDWARE'S OPTION. THIS DISCLAIMER OF LIABILITY FOR DAMAGES WILL NOT BE AFFECTED IF ANY REMEDY PROVIDED HEREIN SHALL FAIL OF ITS ESSENTIAL PURPOSE.

**Governing Law:** This Limited Warranty shall be governed by the laws of the state of California.

AC/DC Power Adapter, Cooling Fan, and Power Supply carry 1 Year Warranty



# TRENDnet

## TRENDnet Technical Support

### US/Canada Support Center

#### Contact

Telephone: 1(310) 626-6252

Fax: 1(310) 626-6267

Email: [support@trendnet.com](mailto:support@trendnet.com)

#### Tech Support Hours

7:30am - 6:00pm  
Pacific Standard Time  
Monday - Friday

### European Support Center

#### Contact

Telephone:

Deutsch : +49 (0) 6331 / 268-460

Français : +49 (0) 6331 / 268-461

0800-907-161 (numéro vert)

Español : +49 (0) 6331 / 268-462

English : +49 (0) 6331 / 268-463

Italiano : +49 (0) 6331 / 268-464

Dutch : +49 (0) 6331 / 268-465

Fax: +49 (0) 6331 / 268-466

#### Tech Support Hours

8:00am - 6:00pm  
Middle European Time  
Monday - Friday

## Product Warranty Registration

Please take a moment to register your product online.

Go to TRENDnet's website at <http://www.trendnet.com>

## TRENDnet

3135 Kashiwa Street  
Torrance, CA 90505  
USA

## Free Manuals Download Website

<http://myh66.com>

<http://usermanuals.us>

<http://www.somanuals.com>

<http://www.4manuals.cc>

<http://www.manual-lib.com>

<http://www.404manual.com>

<http://www.luxmanual.com>

<http://aubethermostatmanual.com>

Golf course search by state

<http://golfingnear.com>

Email search by domain

<http://emailbydomain.com>

Auto manuals search

<http://auto.somanuals.com>

TV manuals search

<http://tv.somanuals.com>