



Quick Installation Guide



TV-IP301
TV-IP301W

Table of Contents

English	1
1. Before You Start	1
2. Hardware Installation	2
3. Configure the Internet Camera	3
Troubleshooting	5

1. Before You Start



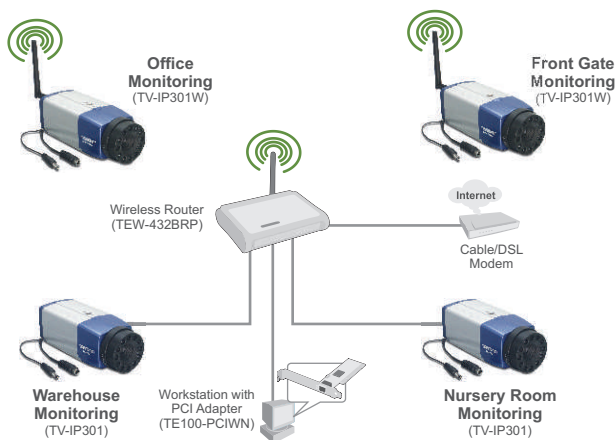
Package Contents

- TV-IP301/TV-IP301W
- Quick Installation Guide
- Metal Stand
- Utility CD-ROM
- AC Power Adapter
- 1 x 2dBi Detachable Antenna (TV-IP301W)

System Requirements

- 10/100Mbps Ethernet
- CPU: Intel Pentium 1GHz or above
- Memory: 256MB or above
- VGA Resolution: 800 x 600 or above
- Web Browser: Internet Explorer 5.0 or above

Application



2. Hardware Installation

1. Mount the Internet Camera to the metal stand.



2. Attach the Antenna. (TV-IP301W)

3. Connect a RJ-45 network cable from a Switch/Router to the **Ethernet** port of the Internet Camera.

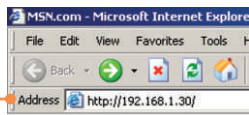


4. Connect the AC Power Adapter to the Internet Camera and then to a power outlet.

3. Configure the Internet Camera

Note: It is recommended that you configure the Internet Camera from a wired computer. Before the Internet Camera can be configured, a Static IP address must be assigned on your computer's network adapter in the subnet of 192.168.1.x. Since the Internet Camera's default IP address is 192.168.1.30, make sure no other network devices are assigned an IP address of 192.168.1.30. (Refer to the Troubleshooting section on how to configure TCP/IP settings on your PC.)

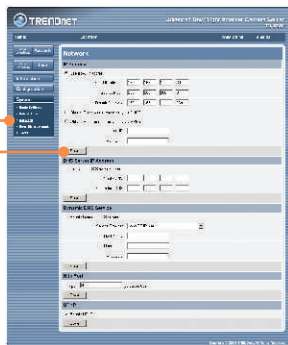
1. Open your web browser, type **http://192.168.1.30** in the Address bar, and press **Enter**.



2. Enter user name and password, then click **OK**.
User name: **admin**
Password: **admin**



3. Click **System** and then click **Network**. Configure the network settings to be in the same subnet as your network. Then click **Save**.

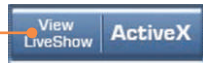


4. Click **System** and then click **Wireless**. Configure your wireless settings to match your wireless network's settings and then click **Save**. (TV-IP301W only)



Note: The TV-IP301W will not work wirelessly until you disconnect the Ethernet cable from the back of the camera.

5. Click **Live Show Active X**.

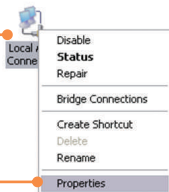


Your installation is now complete.

Note: For detailed information regarding the **TV-IP301/TV-IP301W** configuration and advanced settings, please refer to the Troubleshooting section, User's Guide on the Utility CD-ROM, or TRENDnet's website at <http://www.trendnet.com>.

Q1: How do I configure TCP/IP settings on my computer?

1. Go into the **Control Panel** and double-click the **Network Connections** icon, and then right-click the **Local Area Connection** icon and then click **Properties**.



2. Click **Internet Protocol (TCP/IP)** and then click **Properties**. Then click on **Use the following IP address**, and make sure you assign your network adapter an IP address in the subnet of 192.168.1.x.



Q2: The image is blurry. How do I fix this?

A2: You can adjust the Internet Camera's focus by rotating the lens.

Q3: When I click on Live Show Active X, the image does not load?

A3: First, make sure that you are using a browser that supports Active X. Second, make sure that Active X is installed.

Q4: How do I connect the TV-IP301W to my wireless router or access point?

A4: Make sure that you configure the camera to have the same SSID, encryption mode and key (if enabled). Follow the instructions in section 2 to configure the camera with the SSID and encryption key.

Q5: After I successfully configured the TV-IP301W to match my wireless network settings, I can not connect to the camera.

A5: First, verify that the wireless settings match your wireless network settings. Second, verify in the wireless section of the browser configuration that the **Disable Wireless Communication** option is not checked. Third, make sure to disconnect the Ethernet cable from the camera and verify that the **LINK LED** is blinking green.

If you still encounter problems or have any questions regarding the **TV-IP301/TV-IP301W**, please contact TRENDnet's Technical Support Department.

Certifications

This equipment has been tested and found to comply with FCC and CE Rules.

Operation is subject to the following two conditions:

- (1) This device may not cause harmful interference.
- (2) This device must accept any interference received. Including interference that may cause undesired operation.



Waste electrical and electronic products must not be disposed of with household waste. Please recycle where facilities exist. Check with you Local Authority or Retailer for recycling advice.



NOTE: THE MANUFACTURER IS NOT RESPONSIBLE FOR ANY RADIO OR TV INTERFERENCE CAUSED BY UNAUTHORIZED MODIFICATIONS TO THIS EQUIPMENT. SUCH MODIFICATIONS COULD VOID THE USER'S AUTHORITY TO OPERATE THE EQUIPMENT.



TRENDnet

TRENDnet Technical Support

US • Canada

Toll Free Telephone: 1(866) 845-3673

24/7 Tech Support



Europe (Germany • France • Italy • Spain • Switzerland • UK)

Toll Free Telephone: +00800 60 76 76 6

Worldwide

Telephone: +(31) (0) 20 504 05 35

English/Espanol - 24/7

Francais/Deutsch - 11am-8pm, Monday - Friday MET

Product Warranty Registration

Please take a moment to register your product online.

Go to TRENDnet's website at <http://www.trendnet.com>

TRENDnet

3135 Kashiwa Street
Torrance, CA 90505
USA

Free Manuals Download Website

<http://myh66.com>

<http://usermanuals.us>

<http://www.somanuals.com>

<http://www.4manuals.cc>

<http://www.manual-lib.com>

<http://www.404manual.com>

<http://www.luxmanual.com>

<http://aubethermostatmanual.com>

Golf course search by state

<http://golfingnear.com>

Email search by domain

<http://emailbydomain.com>

Auto manuals search

<http://auto.somanuals.com>

TV manuals search

<http://tv.somanuals.com>