

QUICK INSTALLATION GUIDE



**Cable / DSL 802.11b 11Mbps
Wireless Router**



Copyright © TRENDware International, Inc. 2003. All Rights Reserved.

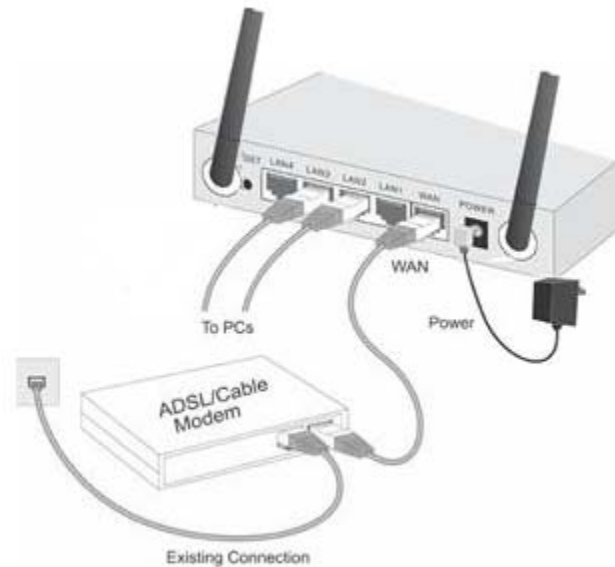
Requirements

- DSL or Cable modem for broadband Internet access.
- Standard Network cables.
- TCP/IP network protocol installed on each PC.
- Wireless Access Point requires Wireless devices be compliant with the IEEE 802.11b specifications.

Setup

① Physical Installation

1. Ensure the Wireless Router and the Cable/DSL modem are powered OFF before commencing. Leave your Cable /DSL modem connected to its wall socket (phone line or cable input).



2. Use standard LAN cables to connect PCs to the Switching Hub ports on the Wireless Router. Both 10BaseT and 100BaseT connections can be used simultaneously.
3. Connect your Cable/DSL **Modem** to the **WAN** port on the Wireless Router. Use the cable supplied with your DSL/Cable modem, or a standard network cable.
4. Connect the supplied Power Adapter and power on.
5. Check the LEDs
 - The *Status* LED (Red) should flash, then turn OFF. If it stays on, there is a hardware error.
 - The *Power*, *WAN*, and *WLAN* LEDs should be ON.
 - For each active LAN (PC) connection, the LAN *Link/Act* LED should be ON.

2 Configuration

1. Start your PC. If it is already started, restart it. It will then obtain an IP Address from the Wireless Router's DHCP Server.
2. Start your WEB browser. In the *Address* box, enter the following:

HTTP://192.168.1.1
3. The *Setup Wizard* will run automatically.
4. Step through the Wizard until finished. Refer to the data from your ISP, and the table below, to ensure your choices are correct.

Connection Type	Data required.
Dynamic IP Address	Usually, none. But some ISP may require a particular <i>Hostname</i> , <i>Domain name</i> , or <i>MAC (physical) address</i> .
Specified (Fixed) IP Address	IP Address allocated to you, and related information.
PPPoE	Login name and password.
PPTP, Big Pond, L2TP	Login name and password, Server Address

5. On the final screen of the Wizard, run the test and check that an Internet connection can be established.
 - If the connection fails, check both your data and the Cable/DSL modem.
 - If your ISP has recorded your MAC (physical) address, change the MAC address (on the Wizard's *Cable Modem* screen) to match the value expected by your ISP.



This guide covers only the most common situations. Please refer to the full User Manual on the CD-ROM if your LAN has any of the following:

- Router
- Existing DHCP Server
- PCs using Fixed (Static) IP Addresses

PC Setup – Windows

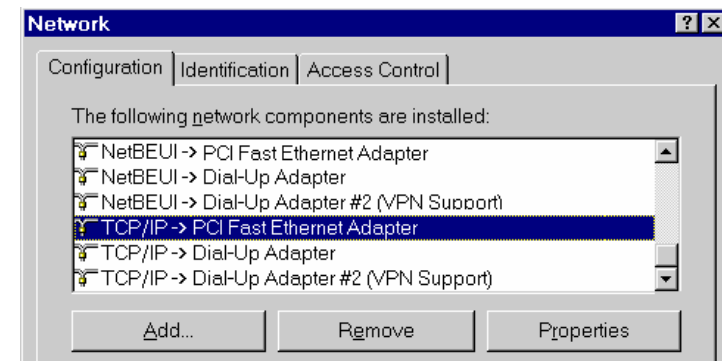
1 TCP/IP Setup

- If using the default Wireless Router settings, and the default Windows TCP/IP settings, no changes need to be made.
- If using a specified (fixed) IP address on your PC, refer to the user manual for details of the required changes:
 - The *Gateway* must be set to the IP address of the Wireless Router
 - The *DNS* should be set to the address provided by your ISP.

For Windows 95/98/ME

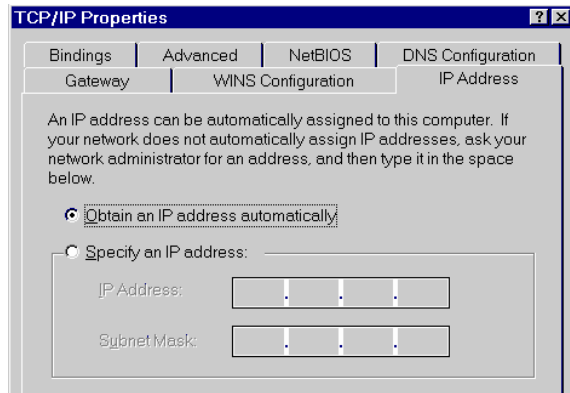
On Windows 95/98/ME, TCP/IP was not installed by default. To check if TCP/IP is installed:

1. Use *Start - Settings - Control Panel - Network* to view a screen like the example below.



2. If TCP/IP is not listed, click *Add - Protocol - Microsoft - TCP/IP* to install it.
3. The default TCP/IP properties are correct and do not need

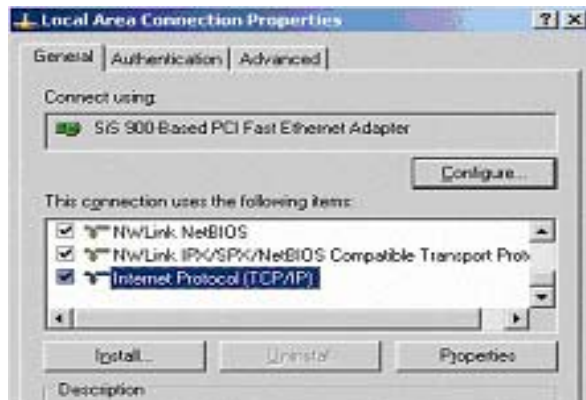
to be changed. To view the properties, select the TCP/IP entry for your network card, as shown above, and click the *Properties* button. You will see a screen like the example below.



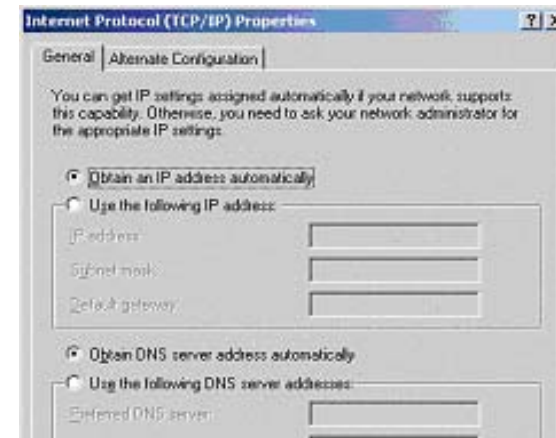
4. The option "Obtain an IP address automatically" should be selected, as shown above.

For Windows 2000/XP

1. Use *Start - Settings - Control Panel - Network Connections*, Right click on the Local Area Connection icon and click on *Properties* to view a screen like the example below.



2. Click on "Internet Protocol TCP/IP" in the Local Area Connection Properties Window and click on the *Properties* button and the following window should appear.



3. The option "Obtain an IP address automatically" and "Obtain DNS server address automatically" should be selected, as shown above.

② Internet Access

For Windows 9x/ME/2000

1. Select *Start Menu - Settings - Control Panel - Internet Options*.
2. Select the *Connection* tab, and click the *Setup* button.
3. Select "I want to set up my Internet connection manually, or I want to connect through a local area network (LAN)" and click *Next*.
4. Select "I connect through a local area network (LAN)" and click *Next*.
5. Ensure all of the boxes on the following Local area network Internet Configuration screen are **unchecked**.
6. Check the "No" option when prompted "Do you want to

set up an Internet mail account now?".

7. Click *Finish* to close the Internet Connection Wizard.
Setup is now completed.

For Windows XP

1. Select *Start Menu - Control Panel - Network and Internet Connections*.
2. Select *Set up or change your Internet Connection*.
3. Select the *Connection* tab, and click the *Setup* button.
4. Cancel the pop-up "Location Information" screen.
5. Click *Next* on the "New Connection Wizard" screen.
6. Select "Connect to the Internet" and click *Next*.
7. Select "Set up my connection manually" and click *Next*.
8. Check "Connect using a broadband connection that is always on" and click *Next*.
9. Click *Finish* to close the New Connection Wizard.
Setup is now completed.

Macintosh Setup

1. Open the TCP/IP Control Panel.
2. Select *Ethernet* from the *Connect via* pop-up menu.
3. Select *Using DHCP Server* from the *Configure* pop-up menu. The DHCP Client ID field can be left blank.
4. Close the TCP/IP panel, saving your settings.

If using manually assigned IP addresses instead of DHCP, the required changes are:

- Set the *Router Address* to the Wireless Router's IP Address. (Default Address: 192.168.1.1)
- Ensure your DNS settings are correct.

Linux Setup using X Windows

Follow this procedure to set your system to act as a DHCP client and obtain an IP Address from the Wireless Router:

1. Start your X Windows client.
2. Select *Control Panel - Network*
3. Select the "Interface" entry for your Network card. Normally, this will be called "eth0".
4. Click the *Edit* button, set the "protocol" to "DHCP", and save this data.
5. To apply your changes
 - Use the "Deactivate" and "Activate" buttons.
 - OR, restart your system.

Wireless Setup

In order to use the Access Point, other Wireless devices must use **the same SSID and WEP settings** as the Wireless Router.

The Wireless Router's default settings are as follows.

Setting	Wireless Router
SSID	Default value: default This may be changed on the <i>Wireless</i> screen, on the Wireless Router's main menu.
WEP	Default value: Disabled Use the <i>Wireless</i> screen, on the Wireless Router's main menu, to enable and configure WEP.

Ensure the Wireless Router and the other Wireless Stations are using the same settings.

- Use the *Wireless* screen to configure the Wireless Access Point in the Wireless Router.
- Configure the Wireless stations (PCs) using your normal method for configuring the Wireless interface.
- Wireless Stations must also be set to use **Infrastructure** mode.
- The Wireless Router will automatically accept 802.11b connections.

Technical Support

You can find the most recent driver/firmware/software and user documentation on the **TRENDware website**. **TRENDware** provides **FREE technical support** for all customers for the duration of the warranty period on this product.

TRENDware Technical Support

Tel: +1-310-891-1100

Fax: +1-310-891-1111

E-mail: support@trendware.com

www.trendnet.com

Monday ~ Friday, 7:30AM ~ 6:00PM Pacific Standard Time

(except holidays)

Free Manuals Download Website

<http://myh66.com>

<http://usermanuals.us>

<http://www.somanuals.com>

<http://www.4manuals.cc>

<http://www.manual-lib.com>

<http://www.404manual.com>

<http://www.luxmanual.com>

<http://aubethermostatmanual.com>

Golf course search by state

<http://golfingnear.com>

Email search by domain

<http://emailbydomain.com>

Auto manuals search

<http://auto.somanuals.com>

TV manuals search

<http://tv.somanuals.com>