

TEW-430APB

**Wireless G LAN Access Point
Quick Installation Guide**

**Guide d'installation rapide du
Point d'accès sans fil 54Mbps 802.11g**

**Anleitung zur Schnellinstallation des
Drahtloser 54Mbit/s 802.11g Access Point**

**Guía de Instalación Rápida
Punto de Acceso Inalámbrico 802.11g a 54Mbps**

Version 09.27.04



TRENDnet[®]
TRENDware, USA
What's Next in Networking

Table of Contents

English	1
1. Prepare for Installation	1
2. Install Hardware	2
3. Configure TCP/IP Settings	3
4. Configure the Access Point	7
Troubleshooting.....	14

English QIG

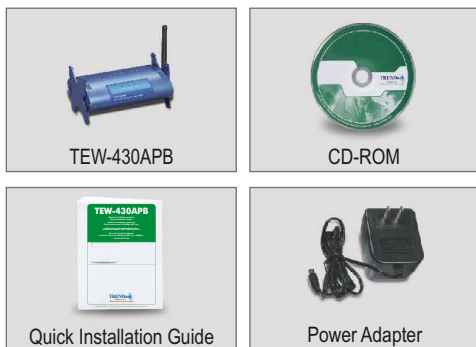
1. Prepare for Installation

Thank you for purchasing TRENDnet's TEW-430APB Wireless G LAN Access Point.

This guide will help you set-up your Access Point quickly and easily. Just follow the step-by-step instructions below, and enjoy the benefits of accessing the Internet without ever being tied down to wires! If you run into problems, please refer to the Troubleshooting section. If you need further technical support, please visit www.TRENDNET.com or call technical support by phone.

Verify Package Contents

Please make sure you have everything in the box:



Verify Equipment

Before setting up the Access Point, you should have:

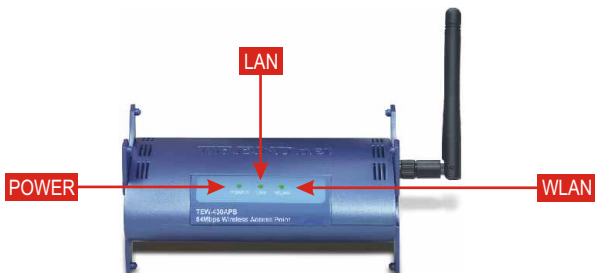
1. A Computer with a Wired(RJ45) or Wireless network card.
2. TCP/IP protocol installed on the Computer.
3. A Web Browser such as Internet Explorer (5.0 or higher) or Netscape Navigator (4.7 or higher).
4. A Hub or Switch connecting your existing wired network.
5. An RJ-45 Network Cable for connecting the Access Point to your network Switch.

2. Install Hardware

1. Locate an optimum location for the Access Point. The best place for the Access Point is usually at the center of your wireless network.
2. Connect the RJ-45 network cable to the Access Point, then connect the other end of the network cable to a Switch or Hub. The Access Point is now connected to your 10/100mbps network.
3. Connect the power adapter to the Access Point. Make sure you use the power adapter supplied with the Access Point; using a different power adapter may damage the unit.



NOTE: If you are using a wired computer to configure the Access Point, please connect this computer to the same Switch or Hub the TEW-430APB is connected to.



Verify Hardware Installation

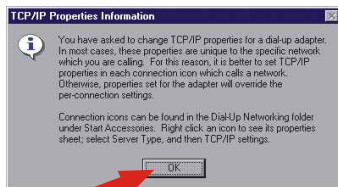
Check to make sure the following Access Point front panel lights are on: Power, LAN, WLAN.

3. Configure TCP/IP Settings

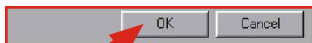
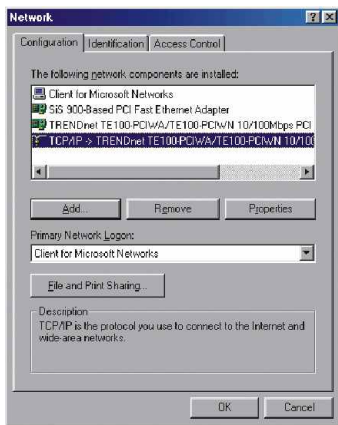
Before the Access Point can be accessed and configured, the computer's TCP/IP settings need to be changed. (That includes your wireless card's IP address, too.)

Windows 95/98/98SE/ME

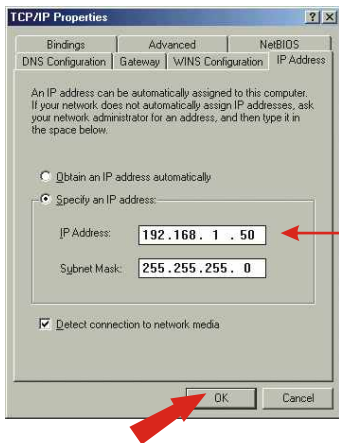
1. Find the **Start** button located on the Desktop.
2. Click **Start**, click **Settings**, and then click on **Control Panel**.
3. Double-Click the **Network** Icon, and the Network Properties box will appear.
4. Under the **Configuration** tab, locate and select **TCP/IP** with the corresponding network card. Then click on the Properties button and the TCP/IP Properties window will appear.



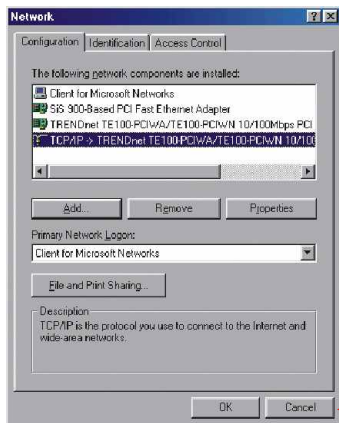
- 4a. Windows 98SE might give you this message before you see the TCP/IP window. If you do not see the window above, then go to the next picture. If you do see this window, click **OK**.



5. Under the **IP Address** tab, click on **Specify an IP address** and enter 192.168.1.50 for IP address and 255.255.255.0 for Subnet Mask and click **OK**.



6. Click **OK**.



- At this point, the installation may require files from your Windows CD-ROM. If you are prompted for the location of these files, insert your Windows 98 CD-ROM into your CD-ROM drive and select CD-ROM drive.
- After the files load, the System Settings Change message appears. Click **Yes** to reboot your system.

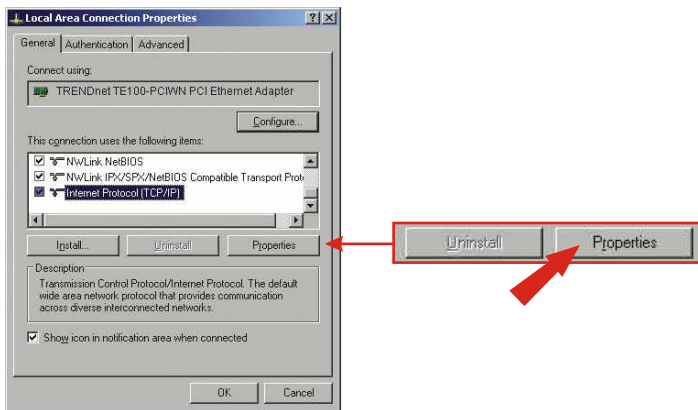


NOTE: If the message does not appear, manually restart your computer.

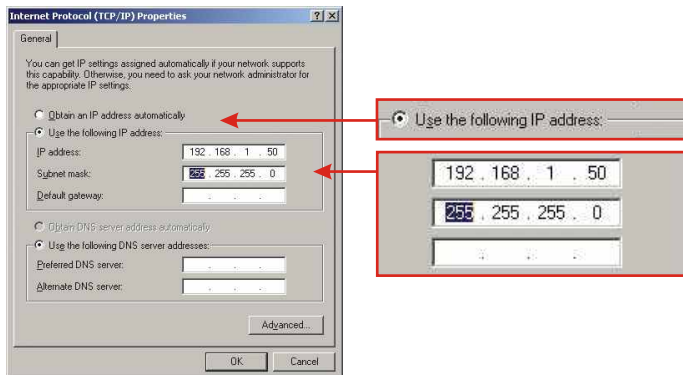
- Your computer is now ready to access and configure the Access Point.

Windows 2000/XP

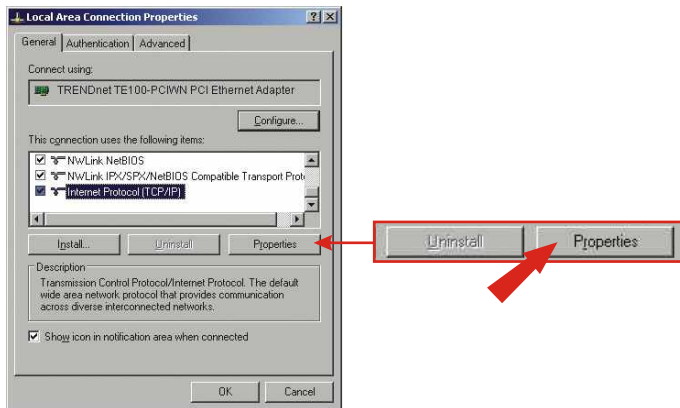
- Find the **Start** button located on the Desktop.
- Click **Start**, click **Settings**, and then click on **Control Panel**.
- Double-Click the **Network Connection** icon.
- Right-Click on the **Local Area Connection** icon, then click on **Properties**. The Local Area Connection Properties box will appear.



5. Under the **General** tab, locate and select Internet Protocol TCP/IP and then click **Properties**. The Internet Protocol (TCP/IP) Properties box will appear.



6. Click on **Use the following IP address**. Enter 192.168.1.50 for IP address and 255.255.255.0 for Subnet, then click **OK**.



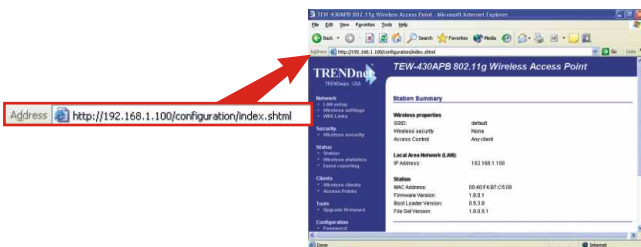
7. Click **OK**.

8. Your computer is now ready to access and configure the Access Point.

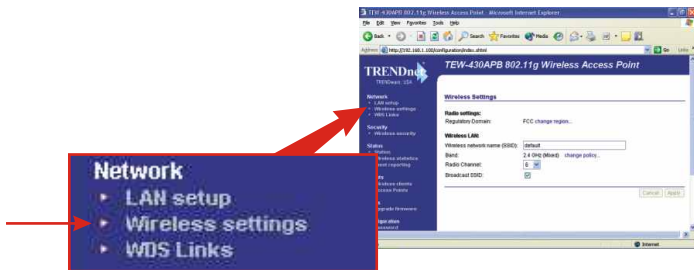
4. Configure the Access Point

From a Wired Computer

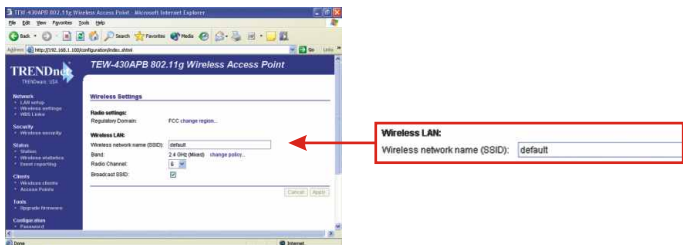
1. Open a web browser (Internet Explorer or Netscape) and enter **http://192.168.1.100** in the address bar, then press the **Enter** key. The TEW-430APB's configuration page will appear.



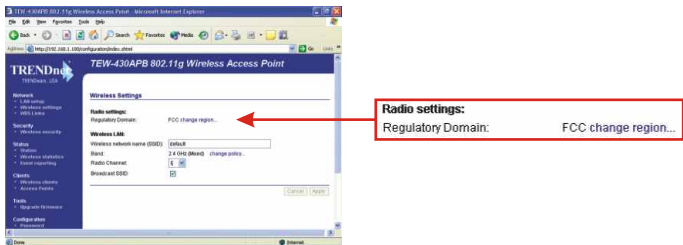
2. To configure the Wireless Settings, click on the **Wireless** option on the left panel, and select **Basic Settings**. The setting's window will appear.



3. Enter any **AP Name** for your Access Point. Create a SSID that your wireless network will be using, and select a channel. (For example: Wireless AP, Home AP, or Office AP).



4. On Radio Settings, click on the **change region...**



5. Select the country you live in and Click **OK**.



Warning: Please note that selecting the incorrect country may result in a violation of applicable law in your country. It is users responsibility to ensure that the wireless channel configuration is compliant with the regulatory standards.

For detailed information about the TEW-430APB's configuration and advanced settings, please refer to the Troubleshooting section, User's Guide CD-ROM. or TRENDnet's website www.trendnet.com.

From a Wireless Computer

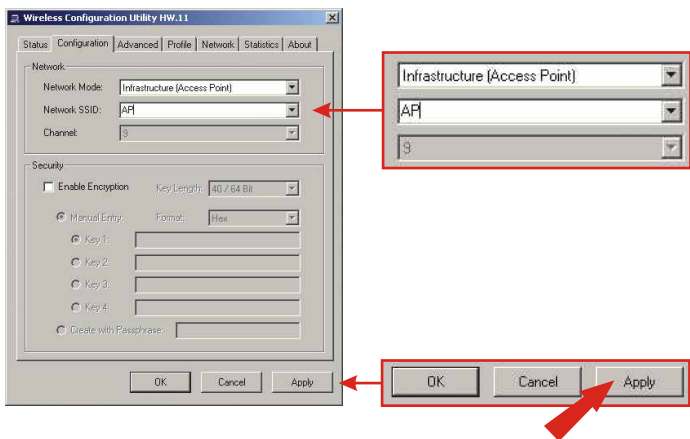
(Using TRENDnet's TEW-226PC as an example in this section)

The default settings of the Access Point are:

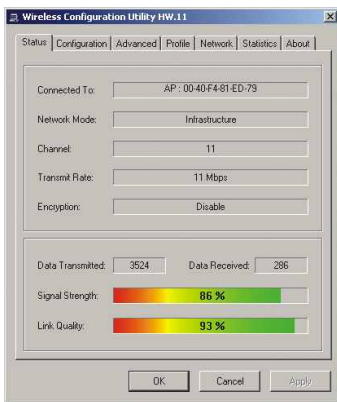
SSID – default

Channel - 6

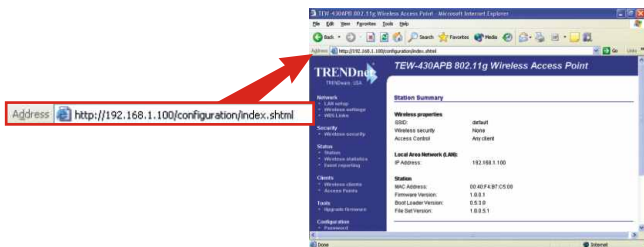
1. On your wireless computer, open up your Wireless Utility Program.
2. Go to the **Configuration** section and select Infrastructure for Network Mode. Enter **AP** for the SSID and select Channel **6** if applicable, then click **Apply**.



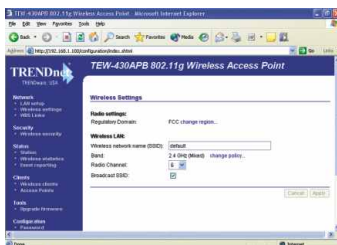
3. Go to the **Status** section of your Wireless Utility Program. It should show Your wireless PC's connection information to the Access Point.



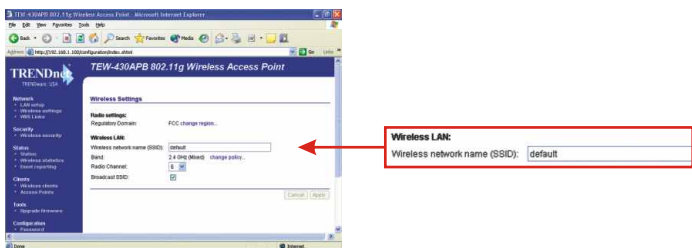
4. Now, open up your browser (Internet Explorer or Netscape) and enter <http://192.168.1.100> at the address bar, and then press the Enter key. The TEW-430APB's configuration page will appear.



5. To configure the Wireless Settings, click on the **Wireless** option on the left panel, and select **Basic Settings**. The settings window will appear.



6. Enter any **AP Name** for your Access Point. Create a SSID that your wireless network will be using, and select a channel. (For example: Wireless AP, Home AP, or Office AP).



7. On Radio Settings, click on the **change region...**



8. Select the country you live in and Click **OK**.



Warning: Please note that selecting the incorrect country may result in a violation of applicable law in your country. It is users responsibility to ensure that the wireless channel configuration is compliant with the regulatory standards.

For detailed information about the TEW-430APB's configuration and advanced settings, please refer to the Troubleshooting section, User's Guide CD-ROM. or TRENDnet's website www.trendnet.com.

9. The system will begin to reset itself.

10. The Access Point is now ready for your Wireless Network.

Troubleshooting

Q1: I specified the IP address `http://192.168.1.100` in my internet browser's address bar, but error message says "The page cannot be displayed". How can I get into the TEW-430APB's web configuration page?

A1: Please check your hardware and TCP/IP settings again by following the instructions sections 1~3, make sure the Power, WAN, WLAN on the Access Point's front panel are on and the TCP/IP configurations are correct. then try accessing `http://192.168.1.100` again.

Q2: If my network's IP is different than the Access Point's range, what should I do?

A2: You should still configure the access point first. After all the settings are applied, go to the Access Point's configuration page, click on TCP/IP settings and change an IP address for the Access Point to match your network's IP.

Q3. After I successfully configured the Access Point to meet my network settings, I cannot connecting to my network using wireless computers.

A3: If you have a DHCP server in your network, you need to go into TCP/IP settings again and re-select "Obtain an IP automatically" for Windows 98/ME and "Obtain an IP Address automatically" for Windows 2000/XP to allow the PC to regain an IP address from your DHCP server.

Q4. All the settings are set correct, but I still can't use the Access Point, what should I do?

A4: You can find additional information in the User's Guide. If you still have Problems, contact our Technical Support by email or phone.

Contact Technical Support

Telephone: +1-310-626-6252
Fax: +1-310-626-6267
Website: www.TRENDNET.com

Technical Support Hours

7:00AM ~ 6:00PM, Monday through Friday
Pacific Standard Time (except holidays)



Product Warranty Registration

Please take a moment to register your product online.
Go to TRENDware's website at <http://www.TRENDNET.com>

TRENDware International, Inc.
3135 Kashiwa Street
Torrance, CA 90505

<http://www.TRENDNET.com>

Free Manuals Download Website

<http://myh66.com>

<http://usermanuals.us>

<http://www.somanuals.com>

<http://www.4manuals.cc>

<http://www.manual-lib.com>

<http://www.404manual.com>

<http://www.luxmanual.com>

<http://aubethermostatmanual.com>

Golf course search by state

<http://golfingnear.com>

Email search by domain

<http://emailbydomain.com>

Auto manuals search

<http://auto.somanuals.com>

TV manuals search

<http://tv.somanuals.com>