



Quick Installation Guide



TS-I300
TS-I300W

Table of Contents

English	1
1. Before You Start	1
2. Hardware Installation	2
3. Configure the Storage Server	4
4. Accessing Storage Devices on TS-I300/TS-I300W	7
Troubleshooting	8

1. Before You Start



Package Contents

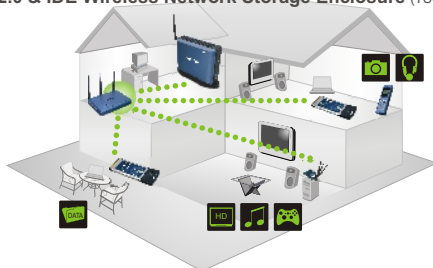
- TS-I300/TS-I300W
- User's Guide CD-ROM
- Quick Installation Guide
- Mounting Stand
- AC Power Adapter (12V DC, 3.0A)
- 1 x 2dBi Detachable Antenna (TS-I300W)

System Requirements

- Web Browser: Internet Explorer (5.5 or higher)
- A computer with a network adapter properly installed.
- A network Switch or Hub with an available network LAN port.
- A RJ-45 network cable.
- IDE Internal Hard Drive or USB 2.0 Storage Device (i.e. flash drive, external hard drive; not included)
- Windows XP, 2000, NT, ME, 98, Linux

Application

USB 2.0 & IDE Network Storage Enclosure (TS-I300)
Or
USB 2.0 & IDE Wireless Network Storage Enclosure (TS-I300W)



2. Hardware Installation

Note: Before installing the IDE hard drive, the jumper settings must be set to Master.

1. Remove the two screws from the rear panel to detach the cover.



2. Make sure the jumper settings on the hard drive is set to Master.

3. Connect the IDE cable and power cable to the hard drive.



4. Place the hard drive onto the metal bracket and secure it with four mounting screws.

5. Replace the cover and secure the two screws.



6. Attach the mounting stand to the Storage Server.



7. Connect a RJ-45 cable from the Switch/Hub to the **LAN** port of the Storage Server and then connect the 2dBi Detachable Antenna (TS-I300W).



8. Connect the External Power Adapter to the Storage Server and then to a power outlet.

9. Verify that the following panel lights are on: **Power, LAN, HDD** and **WLAN** (TS-I300W).



Your hardware installation is now complete.

3. Configure the Storage Server

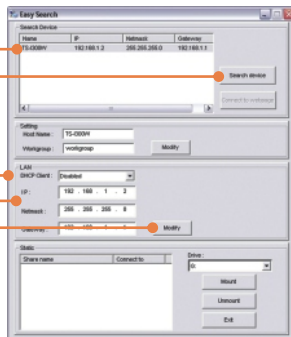
Note: Install and use the Easy Search Utility to discover all the TS-I300/TS-I300W on the network, assign IP Address, change the host name and workgroup, and mount or unmount the hard drive.

For Windows Users

1. Insert the **Utility CD-ROM** into your computer's CD-ROM Drive and then click **Easy Search Utility**.

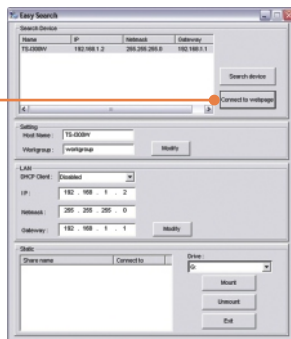


2. Click on **Search device**, and then select the Storage Server.



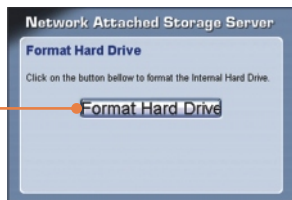
3. Configure the **IP (IP address), Network (Subnet mask), Gateway** and then click **Modify**. **Note:** The IP Address must match the network segment of your network.

4. Click **Connect to webpage**.



Note: If your hard drive has already been formatted, please skip to step 9. If you are attaching a brand new hard drive, please continue on to step 5.

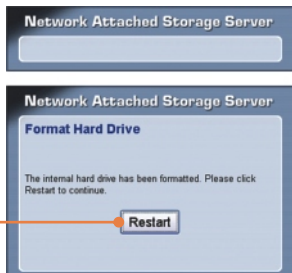
5. Click **Format Hard Drive**.



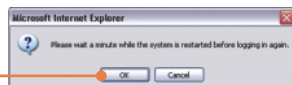
6. Click **OK**.



7. Click **Restart**.



8. Click **OK**.



9. Enter the User name and Password, and then click **Config**.
User Name: **admin**
Password: **admin**



Note: For the TS-I300 skip to section 4. For the TS-I300W continue on to step 10.

10. Click **Advanced** and then **Wireless**.

11. Click **Access Point**, and then click **Enable**. Enter an SSID and then click **Apply**.

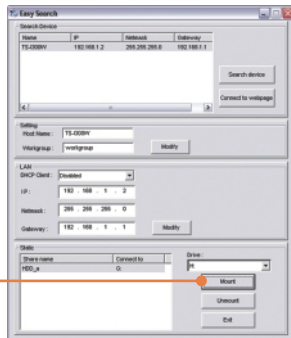


Your configuration is now complete.

For detailed information regarding the **TS-I300/TS-I300W's** configuration and advanced settings, please refer to the Troubleshooting section, User's Guide CD-ROM, or TRENDnet's website at <http://www.trendnet.com>.

4. Accessing Storage Devices on TS-I300/TS-I300W

1. Select the hard drive, and then click **Mount**.



2. Click **OK**.



3. Double-click on **My Computer**. Then double-click on any mounted hard drive under **Network Drives**.



Your storage device is ready for access

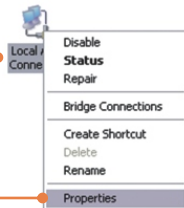
Q1: Can I connect or disconnect the USB storage device while the TS-I300/TS-I300W is on?

A1: Yes, you can connect or disconnect any external USB device while the computer is on, because the USB interfaces are Plug-and-Play and hot-pluggable. Just press on the Unmount button on the unit or open the utility program and press unmount for the USB device.

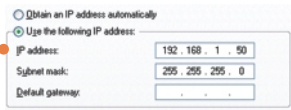
Q2: I specified the IP address `http://192.168.1.2` in my Internet Browser's Address Bar, but an error message says "The page cannot be displayed." How can I get into the TS-I300/TS-I300W's web configuration page?

A2: First, check your hardware settings again by following the instructions in section 2. Second, make sure the LAN and WLAN (TS-I300W) lights are lit. Third, make sure the TS-I300/TS-I300W is assigned an IP Address in the same subnet as your network. You may need to adjust the TCP/IP settings on your computer to match the storage server. Please see the steps below:

1. Go into the **Control Panel** and double-click the **Network Connections** icon, right-click the **Local Area Connection** icon and then click **Properties**.



2. Click **Internet Protocol (TCP/IP)** and then click **Properties**. Then click on **Use the following IP address**, and make sure you assign your network adapter an IP address in the subnet of 192.168.1.x.



Q3: I am unable to mount or access the IDE hard drive. What should I do?

A3: First, verify that the IDE hard drive has been properly installed (see section 2). Second, disable any software firewall programs (e.g. Norton Internet Security, McAfee). If you are running Windows XP, disable the built-in XP firewall. Third, make sure the TS-I300/TS-I300W is assigned an IP Address in the same subnet as your network.

Q4: All the settings are correct, but I can not make a wireless connection to the TS-I300W.

A4: First, double check that the WLAN light on the storage device is lit. Second, power cycle the Access Point. Unplug the power to the TS-I300W. Wait 15 seconds, then plug the power back in. Third, contact the manufacturer of your wireless network adapter. Make sure the wireless network adapter is configured with the proper SSID. The default SSID of the Access Point is **TRENDnet**.

If you still encounter problems or have any questions regarding the **TS-I300/TS-I300W**, please contact TRENDnet's Technical Support Department.

Certifications

This equipment has been tested and found to comply with FCC and CE Rules.

Operation is subject to the following two conditions:

- (1) This device may not cause harmful interference.
- (2) This device must accept any interference received. Including interference that may cause undesired operation.



Waste electrical and electronic products must not be disposed of with household waste. Please recycle where facilities exist. Check with you Local Authority or Retailer for recycling advice.



NOTE: THE MANUFACTURER IS NOT RESPONSIBLE FOR ANY RADIO OR TV INTERFERENCE CAUSED BY UNAUTHORIZED MODIFICATIONS TO THIS EQUIPMENT. SUCH MODIFICATIONS COULD VOID THE USER'S AUTHORITY TO OPERATE THE EQUIPMENT.



TRENDnet Technical Support

US • Canada

Toll Free Telephone: 1(866) 845-3673
24/7 Tech Support



Europe (Germany • France • Italy • Spain • Switzerland • UK)

Toll Free Telephone: +00800 60 76 76 67
English/Espanol - 24/7
Francais/Deutsch - 11 am-8pm, Monday - Friday MET

Worldwide

Telephone: +[31] [0] 20 504 05 35
English/Espanol - 24/7
Francais/Deutsch - 11 am-8pm, Monday - Friday MET

Product Warranty Registration

Please take a moment to register your product online.
Go to TRENDnet's website at <http://www.trendnet.com>

TRENDnet
3135 Kashiwa Street
Torrance, CA 90505
USA

Free Manuals Download Website

<http://myh66.com>

<http://usermanuals.us>

<http://www.somanuals.com>

<http://www.4manuals.cc>

<http://www.manual-lib.com>

<http://www.404manual.com>

<http://www.luxmanual.com>

<http://aubethermostatmanual.com>

Golf course search by state

<http://golfingnear.com>

Email search by domain

<http://emailbydomain.com>

Auto manuals search

<http://auto.somanuals.com>

TV manuals search

<http://tv.somanuals.com>