

TEW-453APB

**Hot Spot Wireless Access Point
Quick Installation Guide**

**Point d'accès sans fil sensible
Guide d'installation rapide**

**Drahtloser Access Point für Hotspots
Kurzanleitung zur Installation**

**Guía de instalación rápida del
punto de acceso inalámbrico Hot Spot**

Version 03.02.2005



TRENDnet[®]
TRENDware, USA
What's Next in Networking

Table of Contents

English	1
1. Prepare for Installation	1
2. Install Hardware	2
3. Configure TCP/IP Settings	3
4. Configure the Access Point	9
Troubleshooting.....	11

English QIG

1. Prepare for Installation

Thank you for purchasing TRENDnet's TEW-453APB Hot Spot Wireless Access Point.

This guide will help you set-up your Access Point quickly and easily. Just follow the step-by-step instructions below, and enjoy the benefits of accessing the Internet without ever being tied down to wires! If you run into problems, please refer to the Troubleshooting section. If you need further technical support, please visit www.TRENDNET.com or call technical support by phone.

Verify Package Contents

Please make sure you have everything in the box:



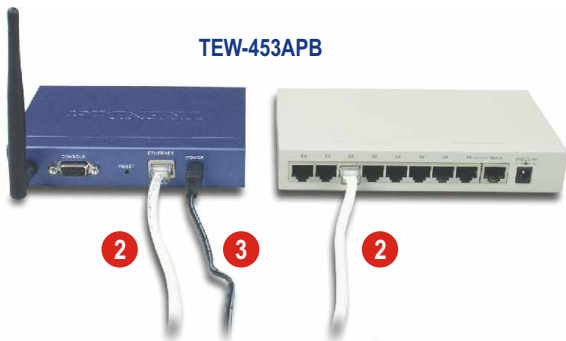
Verify Equipment

Before setting up the Access Point, you should have the following:

1. A computer with Wired (RJ45) or Wireless network card.
2. TCP/IP protocol installed on the Computer.
3. A web browser such as Internet Explorer (5.0 or higher) or Netscape Navigator (4.7 or higher).
4. A Hub or Switch connecting your existing wired network.
5. An RJ-45 Network Cable for connecting the Access Point to your network switch.

2. Install Hardware

1. Locate an optimum location for the Access Point. The best place for the Access Point is usually at the center of your wireless network.
2. Connect the RJ45 network cable to the Access Point, then connect the other end of the network cable to a Switch or Hub. The Access Point is now connected to your 10/100mbps network.
3. Connect the power adapter to the Access Point. Make sure you use the power adapter supplied with the Access Point; using a different power adapter may damage the unit.



NOTE: If you are using a wired computer to configure the Access Point, please connect this computer to the same Switch or Hub the TEW-453AP is connected to.



Verify Hardware Installation

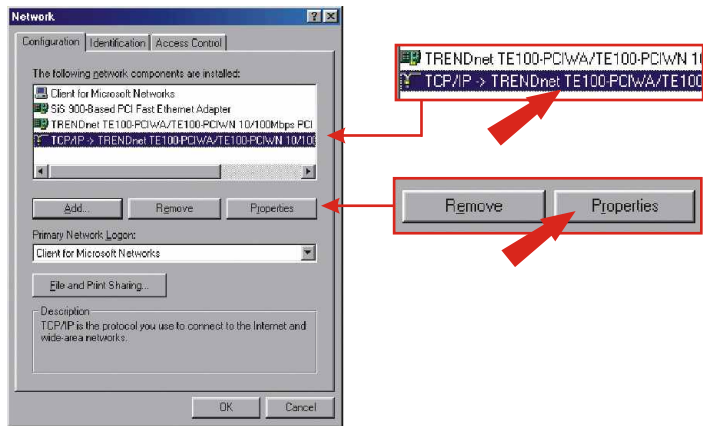
Make sure the front panel lights are on: Power, LAN, Wireless.

3. Configure TCP/IP Settings

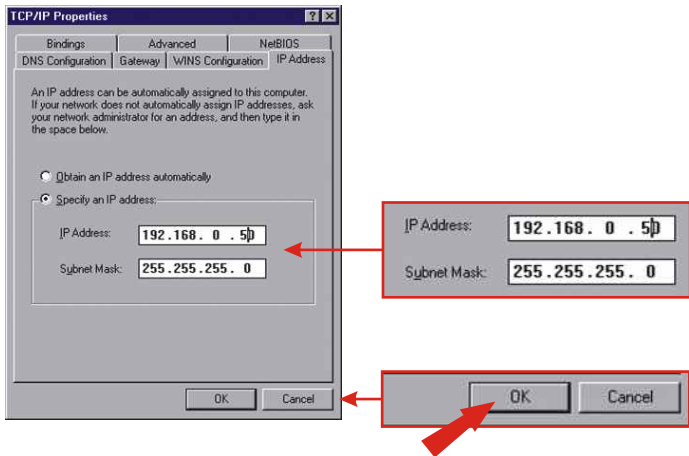
Before the Access Point can be accessed and configured, the computer's TCP/IP settings need to be changed.

Windows 98SE/ME

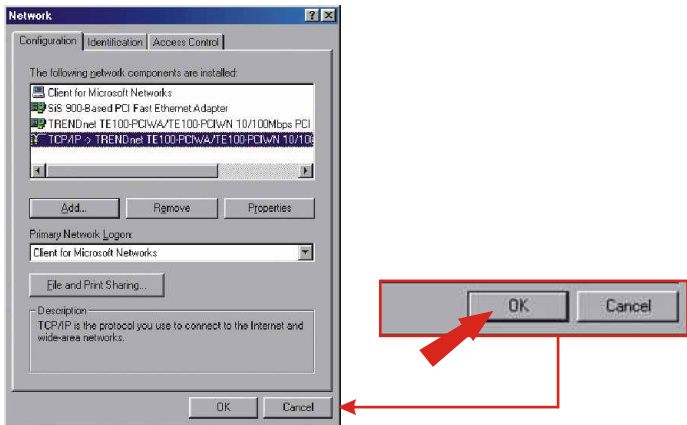
1. Find the **Start** button located on the Desktop.
2. Click **Start**, click **Settings**, and then click on **Control Panel**.
3. Double-Click the **Network** Icon, and the **Network Properties** box will appear.
4. Under the **Configuration** tab, locate and select **TCP/IP** with the corresponding network card. Then click on the **Properties** button and the TCP/IP Properties window will appear.



5. Under the IP Address tab, click on **Specify an IP address** and enter 192.168.0.50 for IP address and 255.255.255.0 for Subnet Mask and click **OK**.



6. Click **OK**.



- At this point, the installation may require files from your Windows CD-ROM. If you are prompted for the location of these files, insert Windows 98 CD-ROM into your CD-ROM drive and select CD-ROM drive.
- After the files load, the System Settings Change message appears, click **Yes** to reboot your system.

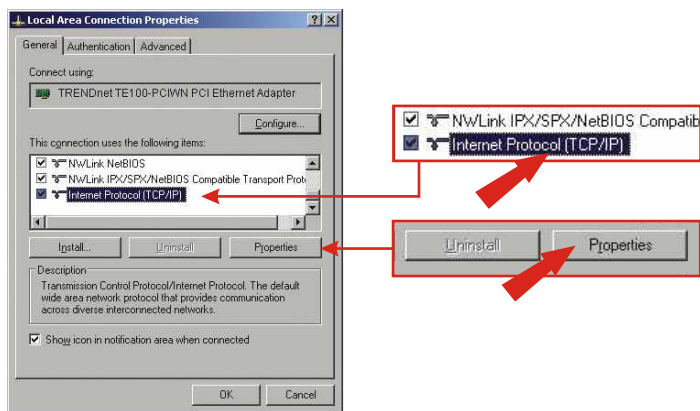


NOTE: If this message does not appear, restart your computer manually.

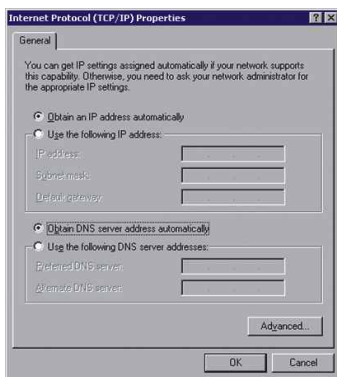
- Your computer is now ready to access and configure the Access Point.

Windows 2000/XP

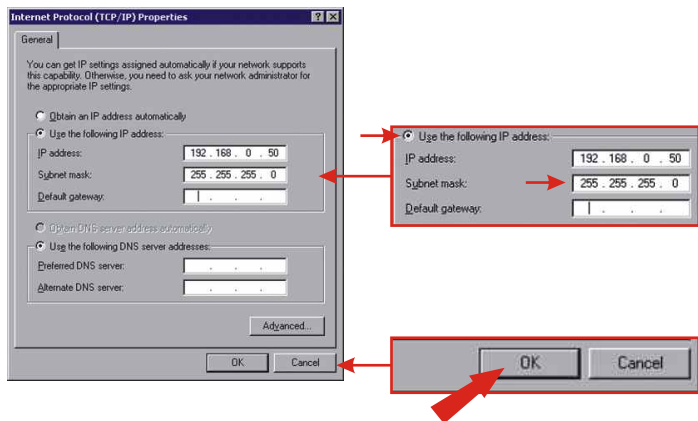
1. Find the **Start** button located on the Desktop.
2. Click **Start**, and click on **Control Panel**. For Windows 2000, click **Start**, highlight **Settings**, and click **Control Panel**.
3. Double-Click the **Network Connection** Icon.
4. Right-Click on the **Local Area Connection** icon and then click on **Properties**. The Local Area Connection Properties box will appear.



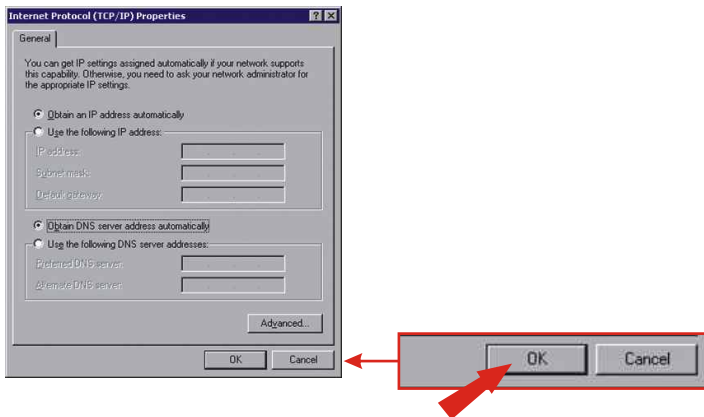
5. Under the **General** tab, locate and click **Internet Protocol TCP/IP** and then click **Properties**. The Internet Protocol (TCP/IP) Properties box will appear.



6. Click on **Use the following IP address**. Enter 192.168.0.50 for IP address and 255.255.255.0 for Subnet Mask, and click **OK**.



7. Click **OK**.



8. Your computer is ready to access and configure the Access Point.

4. Configure the Access Point

From a Wired Computer

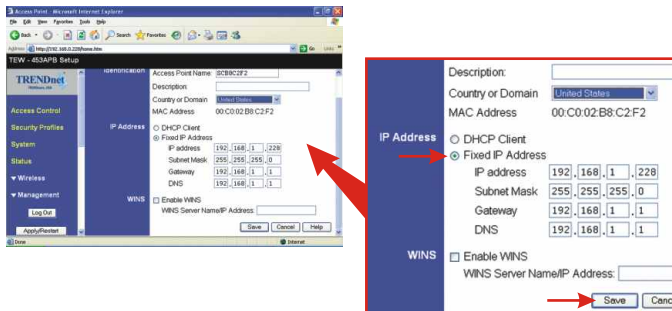
1. Open a web browser (Internet Explorer or Netscape) and enter **http://192.168.0.228** in the address bar, then press the **Enter** key. The TEW-453APB's authentication window will appear. Type **admin** for User name, and type **password** for Password.



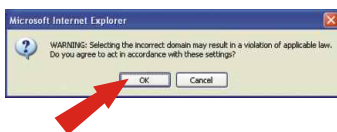
2. Click **System**.



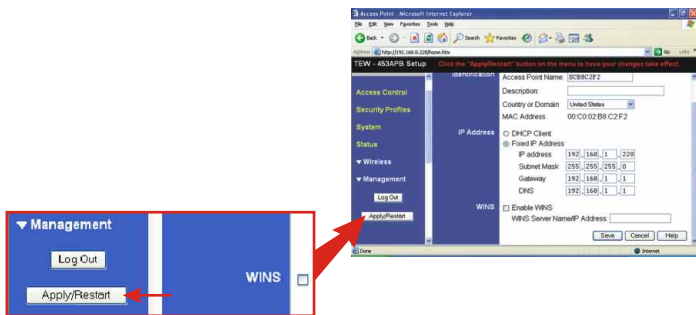
3. Select your country from the pull down menu, click **Fixed IP Address**, and type in your IP address, Subnet Mask, Gateway, and DNS to match your current network settings. Click **Save**.



4. Click **OK**.



5. Click **Apply/Restart**.



6. The TEW-453APB is now ready for your Wireless Network.

Troubleshooting

Q1: I specified the IP address `http://192.168.0.228` in my Internet browser's address bar, but an error message says "The page cannot be displayed". How can I get into the TEW-453APB's web configuration page?

A1: Please make sure that your workstation and the TEW-453APB are in the same network segment. Make sure you change your workstation's IP Address to 192.168.0.X where "X" is a number from 1 to 227 and 229 to 254. If your workstation and the TEW-453APB lie in the same network segment, then double-check the connection between the TEW-453APB and your switch, and make sure that the power adapters for your switch and the TEW-453APB are plugged in.

Q2: After I successfully configured the Access Point to meet my network settings, I cannot connect to my network using wireless computers.

A2: If you have a DHCP server in your network, you need to go into TCP/IP settings again and re-select "Obtain an IP automatically" for Windows 98/ME and "Obtain an IP Address automatically" for Windows 2000/XP to allow the PC to regain an IP address from your DHCP server.

Q3. When I configure the network settings for the TEW-453APB, I don't have a Domain Name Server, but the TEW-453APB requires a DNS entry. What do I do?

A3: In this case, your DNS entry is the same as your Gateway's entry. So if your Gateway is 192.168.1.1, then your DNS is 192.168.1.1.

Q4. All the settings are set correctly, but I still can't use the Access Point, what should I do?

A4: You can find additional information in the User's Guide. If you still have problems, contact our Technical Support by email or phone.

This equipment has been tested and found to comply with FCC and CE Rules. Operation is subject to the following two conditions:

- (1) This device may not cause harmful interference.
- (2) This device must accept any interference received including interference that may cause undesired operation.





TRENDware, USA

What's Next in Networking

Product Warranty Registration

Please take a moment to register your product online.
Go to TRENDware's website at <http://www.TRENDNET.com>

TRENDnet Technical Support

US/Canada Support Center

Contact

Telephone: 1(310) 626-6252

Fax: 1(310) 626-6267

Email: support@trendnet.com

Tech Support Hours

7:30am - 6:00pm Pacific Standard Time
Monday - Friday

European Support Center

Contact

Telephone

Deutsch : +49 (0) 6331 / 268-460

Français : +49 (0) 6331 / 268-461

Español : +49 (0) 6331 / 268-462

English : +49 (0) 6331 / 268-463

Italiano : +49 (0) 6331 / 268-464

Dutch : +49 (0) 6331 / 268-465

Fax: +49 (0) 6331 / 268-466

Tech Support Hours

8:00am - 6:00pm Middle European Time
Monday - Friday

TRENDware International, Inc.

3135 Kashiwa Street. Torrance, CA 90505

<http://www.TRENDNET.com>

Free Manuals Download Website

<http://myh66.com>

<http://usermanuals.us>

<http://www.somanuals.com>

<http://www.4manuals.cc>

<http://www.manual-lib.com>

<http://www.404manual.com>

<http://www.luxmanual.com>

<http://aubethermostatmanual.com>

Golf course search by state

<http://golfingnear.com>

Email search by domain

<http://emailbydomain.com>

Auto manuals search

<http://auto.somanuals.com>

TV manuals search

<http://tv.somanuals.com>