



LCD-1047VT
LCD-1047VR/TL

Color TFT-LCD
TV Monitor
Operation Manual



www.totevision.com

LCD-1047VT/VR/TL

COLOR TFT-LCD TV Monitor

1. LCD-1047VT (stand alone unit)
 2. LCD-1047TL (unit in flush mount kit)
 3. LCD-1047VR (unit in rack kit)
-

OPERATION MANUAL

CONTENTS

SAFETY PRECAUTIONS	4,5	OSD USAGE	
SUPPLIED ACCESSORIES	6	Basic OSD usage	12
PREPARATION		Basic Setup	12
Remote Control	7	PC Setup	13
Cable Connection	8	TV & Video Setup	14
LOCATION OF USER CONTROLS	9	OSD Setup	15
BASIC OPERATION	10	Before Calling for repair service	16
Monitor Installation	11	SPECIFICATIONS	
		LCD-1047VT/VR/TL	17
		Available PC VGA Mode	18
		Warranty Card	19

SAFETY PRECAUTIONS

Improper use can result in electric shock and/or fire. In order to prevent potential danger, please observe the following instructions when installing, operating and cleaning the product. To ensure your safety and prolong the service life of your color TFT-LCD TV monitor product, please read the following precautions carefully before using the product.

- All operating instructions must be read and understood before the product is operated.
- These safety and operating instructions must be kept in a safe place for future reference.
- All warnings on the product and in the instructions must be observed closely.
- All operating instructions must be followed.
- Do not use accessories not recommended by the manufacturer. Use of inadequate accessories can result in accidents.
- This product must be operated on a power source specified on the specification label. If you are not sure of the type of power supply used in your home, consult your dealer or local power company. For units designed to operate on batteries or another power source, refer to the operating instructions.
- The power cords must be routed properly to prevent people from stepping on them or objects from resting on them. Check the cords at the electrical outlet and product.
- If you plan to use a 12V DC power supply unit other than the AC adapter supplied with the product, make sure the power supply unit provides stable voltage with minimum fluctuations.
- Do not overload AC outlets or extension cords. Overloading can cause fire or electric shock.
- Never insert an object into the product through vents or openings. High voltage flows in the product, and inserting an object can cause electric shock and/or short internal parts. For the same reason, do not spill water or liquid on the product.
- Do not attempt to service the product yourself. Removing covers can expose you to high voltage and other dangerous conditions. Request a qualified service person to perform servicing.
- If any of the following conditions occurs, unplug the power cord from the AC outlet, and request a qualified service person to perform repairs.
 - a. When the power cord or plug is damaged.
 - b. When a liquid was spilled on the product or when objects have fallen into the product.
 - c. When the product has been exposed to rain or water.
 - d. When the product does not operate properly as described in the operating instructions.

Do not touch the controls other than those described in the operating instructions.

SAFETY PRECAUTIONS (Continued)

Improper adjustment of controls not described in the instruction can cause damage, which often requires extensive adjustment work by a qualified technician.

e. When the product has been dropped or damaged.

f. When the product displays an abnormal condition. Any noticeable abnormality in the product indicates that the product needs servicing.

- In case the product needs replacement parts, make sure that the service person uses replacement parts specified by the manufacturer, or those with the same characteristics and performance as the original parts.
Use of unauthorized parts can result in fire, electric shock and/or other danger.
- Upon completion of service or repair work, request the service technician to perform safety checks to ensure the product is in proper operating condition.
- When mounting the product on a wall or ceiling, be sure to install the product according to the method recommended by the manufacturer.
- Unplug the power cord from the AC outlet before cleaning the product. Use a damp cloth to clean the product. Do not use liquid cleaners or aerosol cleaners.
- Unplug the power cord from the AC outlet if you do not use the product for an extended period of time.
- Do not use the product near water, such as bathtub, washbasin, kitchen sink, laundry tub, swimming pool or in a wet basement.
- Keep the product away from direct rays of the Sun-light.
- Do not place the product on an unstable cart, stand, tripod or table. Placing the product on an unstable base can cause the product to fall, resulting in serious personal injuries as well as damage to the product. Use only a cart, stand, tripod, bracket or table recommended by the manufacturer or sold with the product. When mounting the product on a wall, be sure to follow the manufacturer's instruction. Use only the mounting hardware recommended by the manufacturer.
- When relocating the product placed on a cart, it must be moved with the utmost care. Sudden stops, excessive force and uneven floor surface can cause the product to fall from the cart.
- The vents and other openings in the cabinet are designed for ventilation. Do not cover or block these vents and openings since insufficient ventilation can cause overheating and/or shorten the life of the product. Do not place the product on a bed, sofa, rug or other similar surface, since they can block ventilation openings. This product is not designed for built-in installation; do not place the product in an enclosed place such as a bookcase or rack, unless proper ventilation is provided or the manufacturer's instructions are followed.
- The LCD panel used in this product is made of glass. Therefore, it can break when the product is dropped or applied with impact. Be careful not to be injured by broken glass pieces in case the LCD panel breaks.
- Keep the product away from heat sources such as radiators, heaters, stoves and other heat-generating products (including amplifiers).
- The LCD Panel is a very high technology product with 786,432 thin film transistors, giving you fine picture details. Occasionally, a few non-active pixels may appear on the screen as a fixed point of blue, green or red. Please note that this does not affect the performance of your product.

SUPPLIED ACCESSORIES

Please check to make sure the following accessories are included with this product.

 <p>Operation Manual (x1)</p>	
  <p>Remote Control (x1)</p> <p>Size AAA Battery (x2)</p>	
 <p>DESK Stand (x1)</p>	
  <p>AC Adapter (x1)</p> <p>AC Cord (x1)</p>	  <p>PC VGA Cable (x1)</p> <p>PC Stereo Cable (x1)</p>

- Use the remote control by pointing it towards the remote sensor window. Objects between the remote control and sensor window may prevent proper operation.

⚠ Cautions regarding use of remote control

- Do not drop the remote control . In addition, do not expose the remote control to liquids, and do not place in an area with high humidity.
- Do not install or place the remote control under direct sunlight. The heat may deform the unit.
- The remote control may not work properly if the remote sensor window of the main unit is under direct sunlight or strong lighting. In such case, change the angle of the lighting or LCD TV monitor set, or operate the remote control closer to the remote sensor window.

Batteries for Remote Control

If the remote control fails to operate the LCD TV Monitor functions, replace the batteries in the remote control.

- 1 Open the battery cover.
- 2 Insert batteries (two Size-AAA batteries, Supplied with product).
 - Place batteries with their terminals corresponding to the (+) and (-) indications in the battery compartment.
- 3 Close the battery cover

⚠ Cautions regarding batteries

Improper use of batteries can result in a leakage of chemicals and/or explosion. Be sure to follow the instructions below.

- Place batteries with their terminals corresponding to the (+) and (-) indications.
- Different types of batteries have different characteristics. Do not mix batteries of different types.
- Do not mix old and new batteries. Mixing old and new batteries can shorten the life of new batteries and/or cause old batteries to leak chemicals.
- Remove batteries as soon as they are non-operable. Chemicals that leak from batteries can cause a rash. If chemical leakage is found, wipe with a cloth.
- The batteries supplied with the product may have a shorter life expectancy due to storage conditions.
- If the remote control is not used for an extended period of time remove batteries from the remote control

Rear view of main unit

1. BNC Video OUT is passive loop out.
2. If BNC Video IN is applied, RCA Video IN will be disabled.



(option) BNC Video IN & loop out

EXT. Speaker

KEY control

*RS-232 (option)



EXT. DC

<Main board connectors>



ANALOG RGB

S-VIDEO

Y, Pb, Pr

PC SOUND

Power input (DC 12V2A)

R L

Sound IN

VIDEO IN

AUDIO OUT

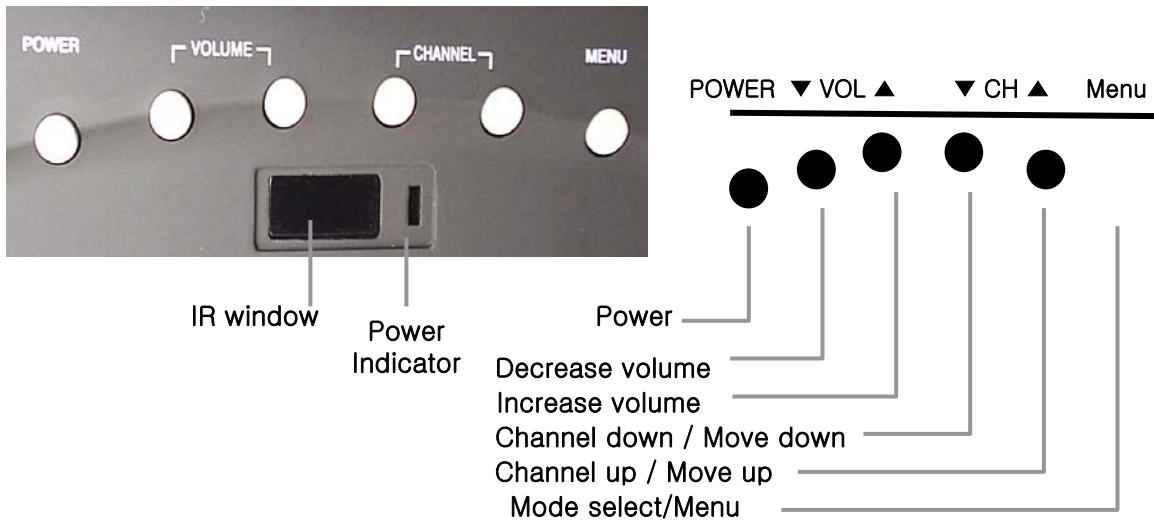
IR IN
TV Antenna

*VIDEO OUT

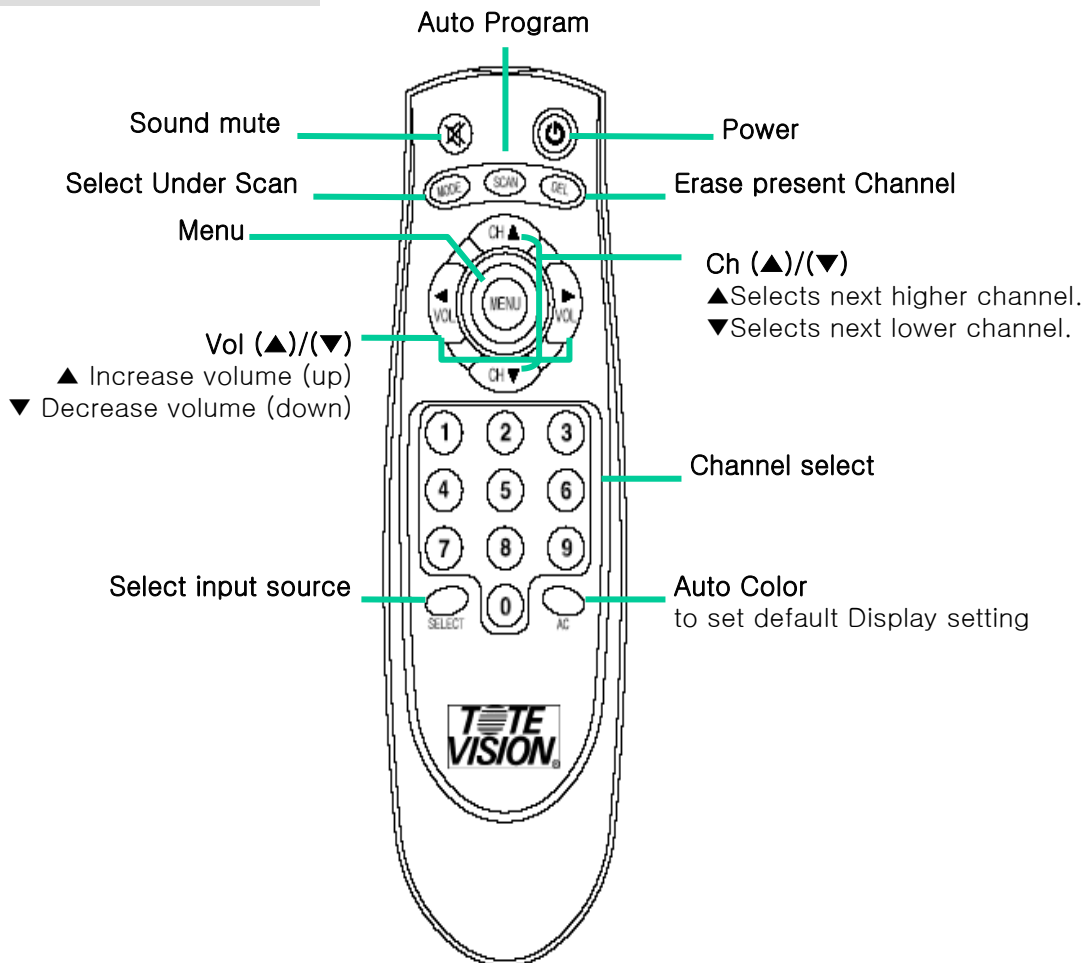
***VIDEO OUT** is active output for VCR recording for TV or composite video input. This can be used for a diversity antenna. If S-Video or component input is selected, display of this output will be changed to black and white because the color of the original input signal is already separated. In PC mode you will get TV signal.

LOCATION OF USER CONTROLS

Control Panel (C/P) on the front of main unit



Remote control (R/C)



BASIC OPERATION

Available Mode Yes / No
 PC Video S-Video TV

POWER On / Off / Standby



IR Window

Power Indicator

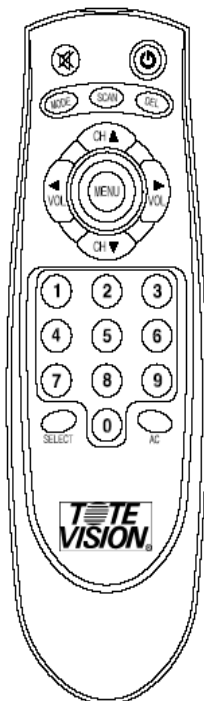
■ by Control Panel (C/P)

- 1 Press the **POWER** button to turn on the main unit.
- 2 The power indicator lights green.
- 3 Press again the **Power** button to turn off.

■ by Remote Control (R/C)

- 1 Press the **Power** button to turn on the main unit.
- 2 Power indicator changes from red to green.
- 3 Press again the **Power** button then the power indicator changes from green to red and main unit turns into standby mode.

Switching PC / TV / VIDEO / S-VIDEO Mode



With Remote Control (R/C)

- 1 Press the **SELECT** to change input source.

From Control Panel (C/P)

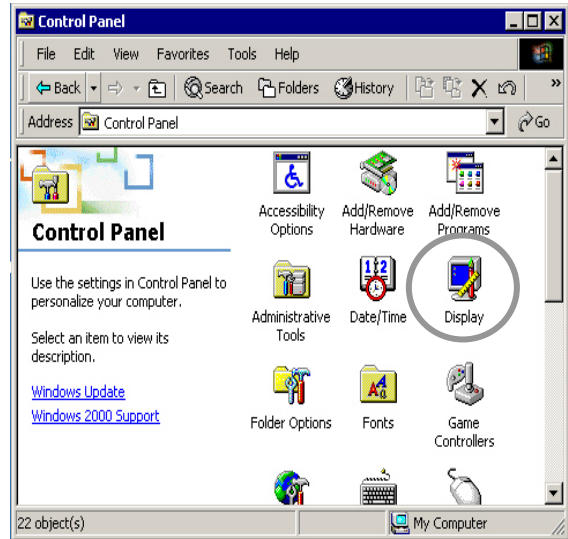
1. Press the **Menu** key less than 2 sec. to select the next input source.
2. Press the **MENU** key more than 2 sec. to access menu on screen.
3. Press the **Ch▲/▼** and **Vol▲/▼** to move the cursor to the desired selected source.
- 4 If you don't want to change source, just leave it or press **MENU** Key.

Monitor Installation

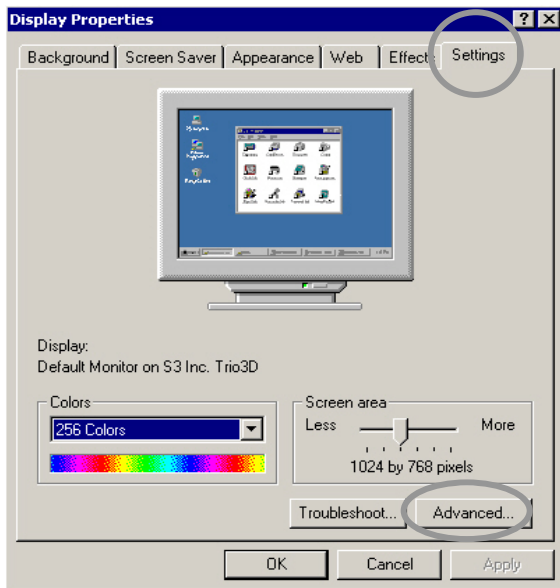
Available Mode Yes / No
 PC Video S-Video TV



1 Double click [Control Panel] icon from [My Computer] folder.

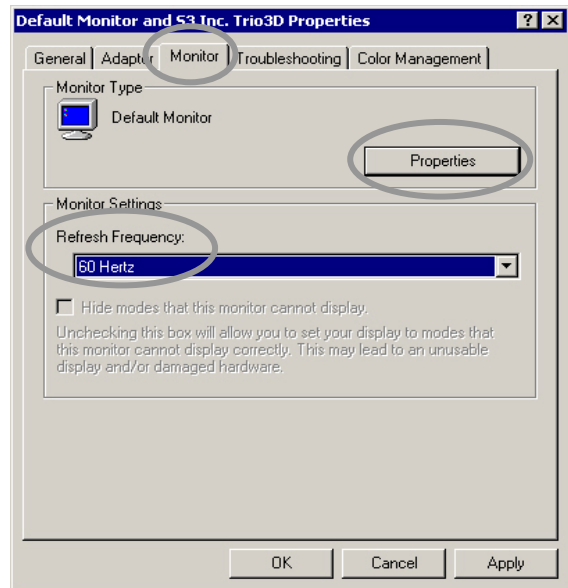


2 Double click [Display] icon from [Control Panel] folder.



3 Select [Settings] in [Display Properties] window.

4 Click [Advanced...].



5 Select [Monitor] in the window shown above.

6 Set [Refresh Frequency:] at 60Hz.

7 Finally, click [Properties].

BASIC OSD USAGE

Main Menu Screen

- 1 Press the **Menu** of R/C or C/P to display the OSD menu screen.
- 2 Press the **Ch▲/▼** of R/C or C/P to move the cursor to desired menu icon.
- 3 Press the **Sel** of R/C or **Menu** of C/P to select the menu icon.
- 4 Press the **Exit** of R/C or select the **Exit** of OSD menu to disappear the main menu screen.

Note: R/C – Remote Control & C/P – Control Panel


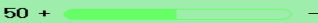
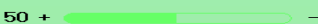





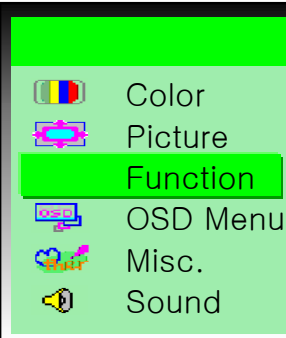
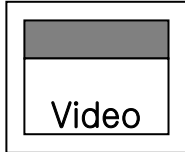
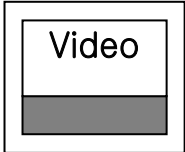
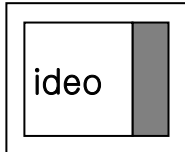
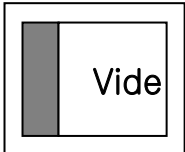
Basic Setup

Available Mode Yes / No
 PC Video S-Video TV

Select item	Press the Vol▼ of R/C or press the Ch▼ of C/P	Press the Vol▲ of R/C or press the Ch▲ of C/P
OSD MENU		
PICTURE		
MISC.	Signal Source - PC, CVBS , S-Video, Y/Pb/Pr, TV Display mode - Normal, Under Scan Reset - YES, NO	
SOUND	Sound ON OFF Volume	



PC Setup

Available Mode Yes / No
 PC Video S-Video TV

Selected item	Press the Vol▼ of R/C or press the Ch▼ of C/P	Press the Vol▲ of R/C or press the Ch▲ of C/P
Color		<p>1024x768 60Hz</p> <p>Contrast 50 +  -</p> <p>Brightness 50 +  -</p> <p>Gamma 0 1 2 3</p> <p>Color Temp 9800 6300 5800 User</p> <p>Color Adjust</p>
PICTURE		<p>1024x768 60Hz</p> <p>H.Position 50 +  -</p> <p>V.Position 50 +  -</p> <p>Phase 50 +  -</p> <p>Clock 50 +  -</p> <p>Sharpness 1 2 3 4 5</p>
Function		<p>1024x768 60Hz</p> <p>AUTO Adjust YES NO</p> <p>AUTO color YES NO</p> <p><input checked="" type="checkbox"/> Automatically adjusted items are bellow</p> <p>1) Frequency, 2) Phase</p> <p>3) H-position of PC Setup</p> <p>4) V-Position of PC Setup</p> <p>5) Canceling Speaker Mute</p>
V-Position	<p>Move down</p> 	<p>Move up</p> 
H-Position	<p>Move left</p> 	<p>Move right</p> 

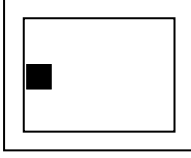
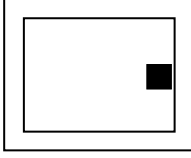
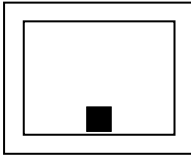
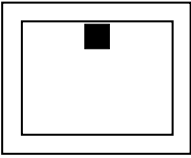
TV & Video Setup

Available Mode Yes / No
 PC Video S-Video TV

Selected item	Press the Vol▼ of R/C or press the Ch▼ of C/P	Press the Vol▲ of R/C or press the Ch▲ of C/P
Channel Edit	UP/DOWN Add/Erase Select AUTO Search Fine Tune	4 ADD Erase AIR STD HRC IRC YES NO -2
Under Scan	<ul style="list-style-type: none"> ● Normal Screen The screen takes the source of 4:3 aspect ratio as its full-sized regular picture. You may lose some of the edge of the original image. ● Under scan mode This mode enables the user to display 100% of input image without hiding any image of Source. Video will be displayed with small black border around the border. Some video source which is non-standard format may break the black border. <div style="display: flex; justify-content: space-around; align-items: center;"> <div style="text-align: center;"> <p>Normal Display</p>  </div> <div style="text-align: center;"> <p>Under Scan</p>  </div> </div>	

OSD Setup

Available Mode Yes / No
 PC Video S-Video TV

Selected item	Press the Vol▼ of R/C or press the Ch▼ of C/P	Press the Vol▲ of R/C or press the Ch▲ of C/P
Language	<p>1 Press the Menu of R/C or C/P to select the Language. The language select menu screen will appear.</p> <p>2 Press the Vol▲/▼ of R/C or press the Ch▲/▼ of C/P to move the cursor to the English or other.</p> <p>3 Press the Vol▲ of R/C or Menu of C/P to select the desired language. Then press Exit to move to previous menu screen.</p>	
H-Position	move left the OSD menu box 	move right the OSD menu box 
V-Position	move down the OSD menu box 	move up the OSD menu box 
Background	<input type="radio"/> Translucent <input type="radio"/> Opaque	
Duration Time	<input checked="" type="checkbox"/> The range of controlling the duration time of the OSD menu is from 5 sec. up to 30 sec. Default setting is 10 sec.	

Before calling for repair service...

- Before calling for repair service, check the following items for possible remedies to the encountered symptoms.

Problem	Check below	Reference Pages
There is no picture or sound (TV,Video,PC).	<ul style="list-style-type: none"> • Make sure the AC adapter is properly inserted in the power outlet. • Make sure the main power button of the main unit is on. • Make sure the signal cables are securely connected. • Make sure the power of an external input device is on. • Make sure the input mode is set to proper mode. • Fluorescent lamp may have reached the end of service life. 	8
		9
		8
		–
		9
		19
There is no sound (TV,Video PC).	<ul style="list-style-type: none"> • Make sure the volume is not set to minimum. • Make sure the sound is not set to mute. • Make sure the sound cables are securely connected. 	9
		9
		8
There is no picture or sound, just noise(TV).	<ul style="list-style-type: none"> • Make sure the antenna cable is properly connected. • Bad reception can be considered. 	8
		–
Picture is not clear (TV).	<ul style="list-style-type: none"> • Make sure the antenna cable is properly connected. • Bad reception can be considered. 	8
		–
Picture is not clear (PC).	<ul style="list-style-type: none"> • Operate the Auto Adjust. • Reset the Frequency and the Phase. 	13
		13
The picture is not clear (Video).	<ul style="list-style-type: none"> • Check whether the Video Type is set up in the Video Setup menu. 	12,14
The picture is not sharp (TV).	<ul style="list-style-type: none"> • The reception may be weak. • The state of broadcast may also be bad. • Make sure the antenna cable is securely connected. 	
The picture is doubled or tripled (TV).	<ul style="list-style-type: none"> • Make sure the antenna is facing the right direction. • There may be reflected electric waves from mountains or buildings. 	
There are stripes on the screen or color fade.	<ul style="list-style-type: none"> • Check this unit receiving interference from other devices. Transmission antennas of radio broadcasting stations and transmission antennas of amateur radios and cellular phones may also cause interference. • Use the unit as far apart as possible from devices that may cause possible interference. 	

SPECIFICATIONS

LCD-1047VT/VR/TL

Color TFT-LCD TV Monitor

Resolution		1024 * 768, XGA
Color	Standard Color	262,144 Colors
Brightness		250 cd/m ² (nit)
Contrast Ratio		450 : 1
Viewing Angle		H : 160 ° V : 160 °
Panel	Type	Amorphous Si TFT-LCD
	Actual Display Size	210.4 * 157.8mm
	Diagonal Length	10.4", 264.16mm
PC Signal (Analog RGB)	H-Frequency	30~61 KHz
	V-Frequency	56~75 Hz
	Signal Level	0.7Vp-p
Video / TV	Input Signal	Composite/ S-VIDEO/YPbPr / CATV(NTSC)
	Color Signal Type	NTSC / PAL (Auto Sensing)
	Sound Signal Type	YPbPr/CVBS/S-Video: Stereo, TV : mono
Power Voltage		AC100~240V, 50/60Hz, DC12V
Power Consumption	Standard	Typ. 20Watt
	Power Save Mode	Max. 3 Watt
Speaker (power option upon order)		Standard : 2x 2 Watts(VT/VR), 5W(TL),
Size	W*H*D mm	270 x 230 x 50 mm, without desk stand
Weight		2 Kg w/o accessories



SPECIFICATIONS

Available PC VGA Mode

VGA Input Signal

Resolution	V-Frequency (Hz)	H-Frequency (KHz)	Pixel Rate (MHz)	Standard Type	Remark
640 x 350	85	37.9	31.500	VESA Standard	DOS
640 x 400	85	37.9	31.500	VESA Standard	
720 x 400	85	37.9	35.500	VESA Standard	
640 x 480	60	31.5	25.175	Industry Standard	VGA
	72	37.9	31.500	VESA Standard	
	75	37.5	31.500	VESA Standard	
800 x 600	56	35.1	36.000	VESA Guidelines	SVGA
	60	37.9	40.000	VESA Guidelines	
	72	48.1	50.000	VESA Standard	
	75	46.9	49.500	VESA Standard	
1024 x 768	43	35.5	44.900	Industry Standard	XGA
	60	48.4	65.000	VESA Guidelines	
	70	56.5	75.000	VESA Standard	
	75	60.0	78.750	VESA Standard	
1152 x 864	75	67.5	108.000	VESA Standard	-

Warranty

ONE YEAR LIMITED WARRANTY

ToteVision warrants to the original purchaser that this product is free from defects in workmanship and material under normal use and conditions for a period of 1 year from the date of original purchase, subject to the limitations below. Should service be required by reason of any defect or malfunction during the warranty period, *ToteVision* will repair or at its discretion replace this product, without charge (except for a \$15.00 charge for handling, packing, return shipping, and subject to verification of the defect or malfunction), upon delivery of this product to the Factory Service Center listed below with proof of date of purchase. During the warranty period *ToteVision* will repair or replace, free of charge, defective units **WHICH ARE NOT DEFECTIVE DUE TO ORDINARY WEAR AND TEAR, USER ABUSE, OR OTHER CAUSES NOT ARISING OUT OF MANUFACTURER'S DEFECTS IN MATERIALS OR WORKMANSHIP.**

Before returning this product for service:

1. If it is necessary to pack the unit in other than original carton and protectors, please insure proper packaging for good protection.
2. Enclose a photocopy of your dated sales receipt, credit card statement, or other proof of the date of purchase, a description of your complaint, your name, address and day time telephone number. (Do not use P.O. Box numbers since UPS cannot deliver to P.O. Boxes.) Your warranty registration information must be on file in our office as a method of identification. If proof of original ownership is not in our records, the repairs will be treated as "out-of-warranty" and your unit will be returned to you after you have paid for repair and handling charges.
3. For "In Warranty repairs" enclose a check or money order payable to the order of *ToteVision* for the sum of \$15.00 for return postage and handling.
4. Ship the unit prepaid to the Factory Service Center listed below.
5. If your unit needs service after the warranty period has expired, ship it prepaid and insured to the Factory Service Center below. Enclose a description of your complaint; your name, company name, address, and day time telephone number. You will be advised of estimated repair charges.

NOTE: This warranty is valid only if the product is used for the purpose for which it was designed. It does not cover:

- (i) products which have been damaged by negligence, misuse, accidents, abuse, acts of God, or units which have been modified or repaired by unauthorized persons,
- (ii) cracked or broken units or components or units damaged by excessive heat or cold, or units exposed to excessive UV light.
- (iii) products which have their serial numbers removed, altered or rendered illegible,
- (iv) products that have cold cathode florescent tubes (CCFTs) that do not provide sufficient illumination,
- (v) the cost of shipping this product to the Factory Service Center and its return to you.

No warranty, expressed or implied, as to merchantability or fitness for a particular use is made beyond this Limited Warranty. *ToteVision* will not be liable for incidental or consequential damages or lost profits arising from product defects or malfunctions. This warranty is valid only in the United States of America and does not extend to owners of the product subsequent to the original purchaser. Any applicable implied warranties are also limited to 1 year and *ToteVision* will not be liable for consequential damages. (Some states do not allow limitations on implied warranties or exclusions of consequential damages, so that these restrictions may not apply to you.) This warranty gives you specific legal rights, and you may also have other rights which vary from state to state.

As a precondition to receiving any of the benefits of this limited warranty, your completed warranty registration information must be on file in our office. **IF YOUR INFORMATION IS NOT ON FILE WITH US, ALL WARRANTY CLAIMS WILL BE DENIED. TO PROTECT YOUR WARRANTY, MAIL YOUR REGISTRATION INFORMATION TODAY!** Submission of a unit determined to be not defective will result in a charge to you for testing and handling the unit. Thoroughly test your unit before submitting it for warranty claim repair.

Send unit to: TOTEVISION SERVICE CENTER 1319 Dexter Avenue N #020, Seattle, WA 98109

For further information: call (206) 623-6000 or fax (206) 623-6609

WARRANTY REGISTRATION

Protect your Warranty by completing and mailing this form to: *ToteVision*, 1319 Dexter Avenue N #020, Seattle, WA 98109

Model Number: _____ Serial Number: _____

Name: _____

Address: _____

City: _____ State: _____ Zip: _____

Telephone number: (_____) _____

Dealer: _____ Dealer City: _____ State: _____

Version 082203

Free Manuals Download Website

<http://myh66.com>

<http://usermanuals.us>

<http://www.somanuals.com>

<http://www.4manuals.cc>

<http://www.manual-lib.com>

<http://www.404manual.com>

<http://www.luxmanual.com>

<http://aubethermostatmanual.com>

Golf course search by state

<http://golfingnear.com>

Email search by domain

<http://emailbydomain.com>

Auto manuals search

<http://auto.somanuals.com>

TV manuals search

<http://tv.somanuals.com>