

Prius

Brief Guide





TOYOTA

Table of Contents

High voltage components	2	Lights	9
Hybrid battery air vent	2	Wipers	10
Accessing your vehicle	3	Power (ignition) switch	11
Electric windows and windows lock	4	Heating, A/C and de-misting	12
Child rear door protection lock	4	Setting the clock	13
Child restraint system	4	Gear change	14
Seat and seat belt adjustment	5	Parking brake	14
Steering wheel adjustment	6	Fuel tank opening	15
Instrument panel overview	7	Bonnet opening	15
Multi-information display	8	Eco-Driving	16
Instrument Cluster	9		

Introducing Prius

Thank you for buying a Prius. We trust this Brief Guide will enable you to become familiar with your vehicle's basic operations and assist you in enjoying your vehicle.

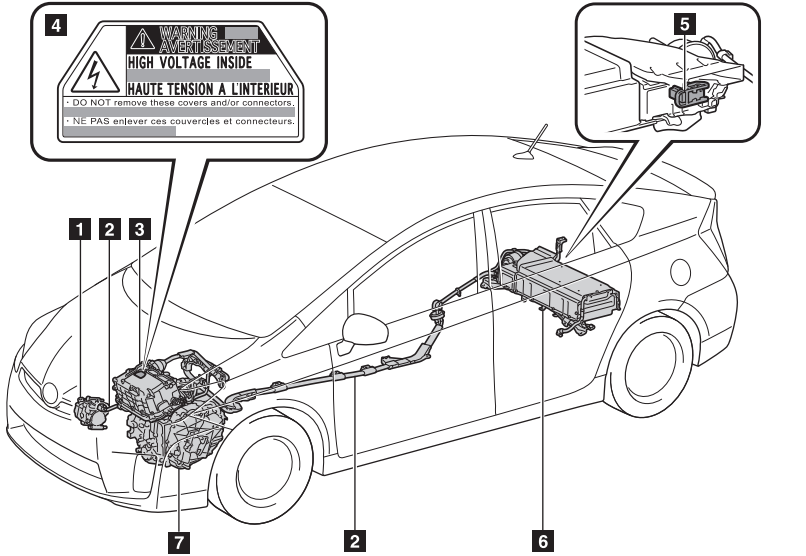
This brief guide does not replace or substitute the Owner's Manual, which you will find in the vehicle's glove compartment. It is important that you review the full Owner's Manual as well as any further supplementary manuals as this will allow you to familiarise yourself with the operating and safety instructions and to handle the vehicle within its limitations.

Please do read all documents in your pack as this will ensure you get maximum performance from your car and learn about related services offered.

Your Centre and everyone at Toyota wish you many years of enjoyable driving in your new Prius.

NB: All information contained in this brief guide are current at the time of printing. Toyota reserves the right to make changes at any time without notice.

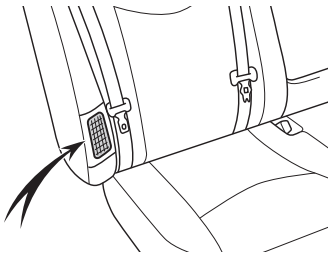
High voltage components



1. Air conditioning compressor.
2. High voltage cables (orange colour).
3. Power control unit and DC/DC converter.
4. Caution label.
5. Service plug.
6. Hybrid battery (Traction battery).
7. Electric motor (Traction motor).

Take care when handling the hybrid system, as it contains a high voltage system and some parts become extremely hot.

Hybrid battery air vent

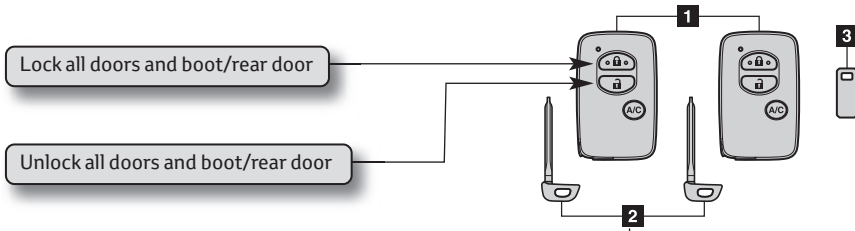


There is an air intake vent on the side of the rear right seat back to cool the hybrid battery. If it becomes blocked, hybrid battery may overheat causing reduction of battery output.

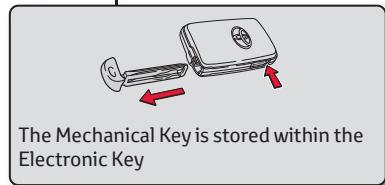
Accessing your vehicle

Smart entry & start system

1. Electronic keys
 - Operate smart entry & start system
 - Operate the wireless remote control function
2. Mechanical keys
3. Key number plate

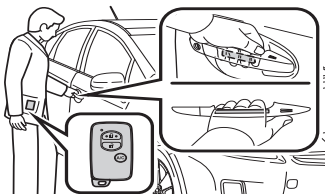


The wireless remote control can be used to lock and unlock your vehicle from the outside.

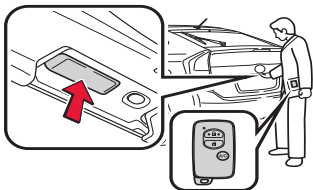


Unlocking and locking doors

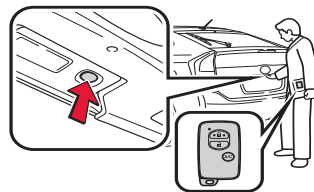
The following operations can be performed simply by carrying the electronic key on your person.
(The driver should always carry the electronic key.)



Unlocks and locks the doors and trunk/back door.

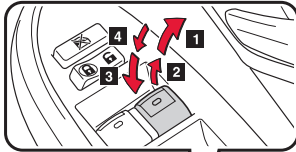


Press the unlock button to unlock the doors.



Press the lock button to lock the doors.

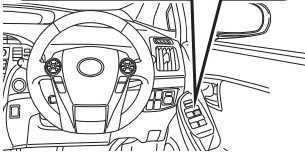
Electric windows and windows lock



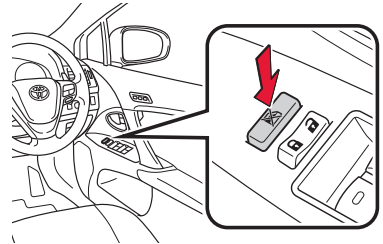
The electric windows can be opened and closed as follows:

1. One touch closing*
2. Closing
3. One touch opening*
4. Opening

*Pushing the switch in the opposite direction will stop the window travel partway

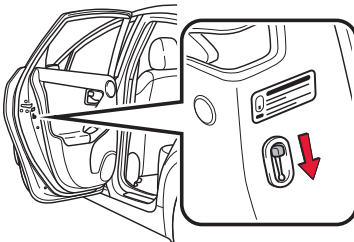


Pressing the switch (right) locks the passenger windows preventing accidental opening or closing.



Keep fingers away from moving windows

Child rear door protection lock



The door cannot be opened from inside the vehicle when the locks are set.

These locks can be set to prevent children from opening the rear doors. Push down the rear door switches to lock the rear doors.

Child restraint system

Child restraint systems are classified into the following 5 groups according to the regulation ECE No. 44:

Group 0: Up to 10 kg or 22lbs (0-9 months)

Group I: 9-18 kg or 20-40lbs (9 months-4 years)

Group III: 22-36 kg or 48-79lbs(6 years-12 years)

Group 0+: Up to 13 kg or 29lbs (0-2 years)

Group II: 15-25 kg or 33-55lbs (4 years -7 years)

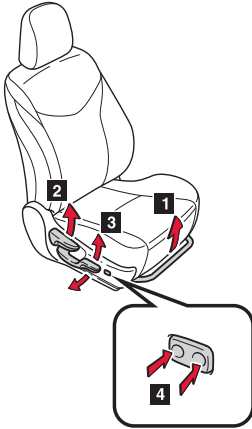
(A) Baby seat
equal to Group 0 and 0+
of ECE No. 44

(B) Child seat
equal to Group 0+, I and II
of ECE No. 44

(C) Junior seat
equal to Group III
of ECE No. 44



Seat and seat belt adjustment

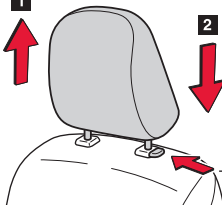


Front seats

1. Seat position adjustment lever (driver's side only).
2. Seatback angle adjustment lever.
3. Vertical height control lever (driver's side only).
4. Lumbar support control switch (driver's side only).

Head restraint height adjustment

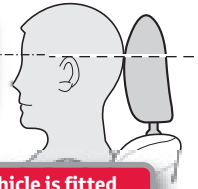
Pull to move upwards.



Press and hold lock release to lower.

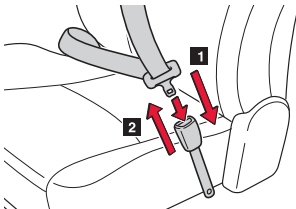
Lock release

The centre of the head restraint should be level with the top of the ears

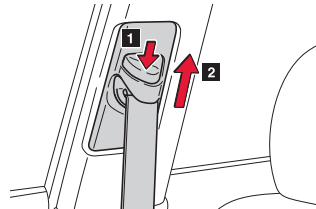


For safety reasons your vehicle is fitted with active head restraints. Under no circumstances should any accessories be attached to these (e.g. portable DVD players, etc).

Seat belts



1. To fasten the seat belt push the tab into the buckle until it clicks.
2. Press the release button to unfasten the seat belt.

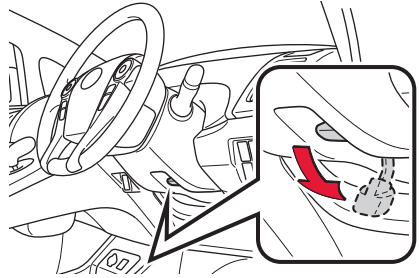


Adjust the height up and down as required

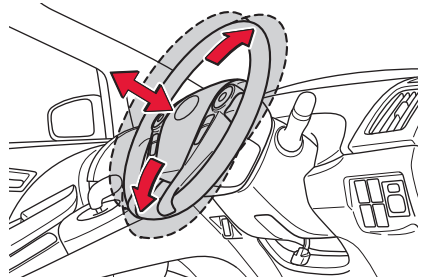
Steering wheel adjustment

Steering wheel

Hold the steering wheel and press the lever down.
Adjust the position by moving the steering wheel horizontally and vertically.



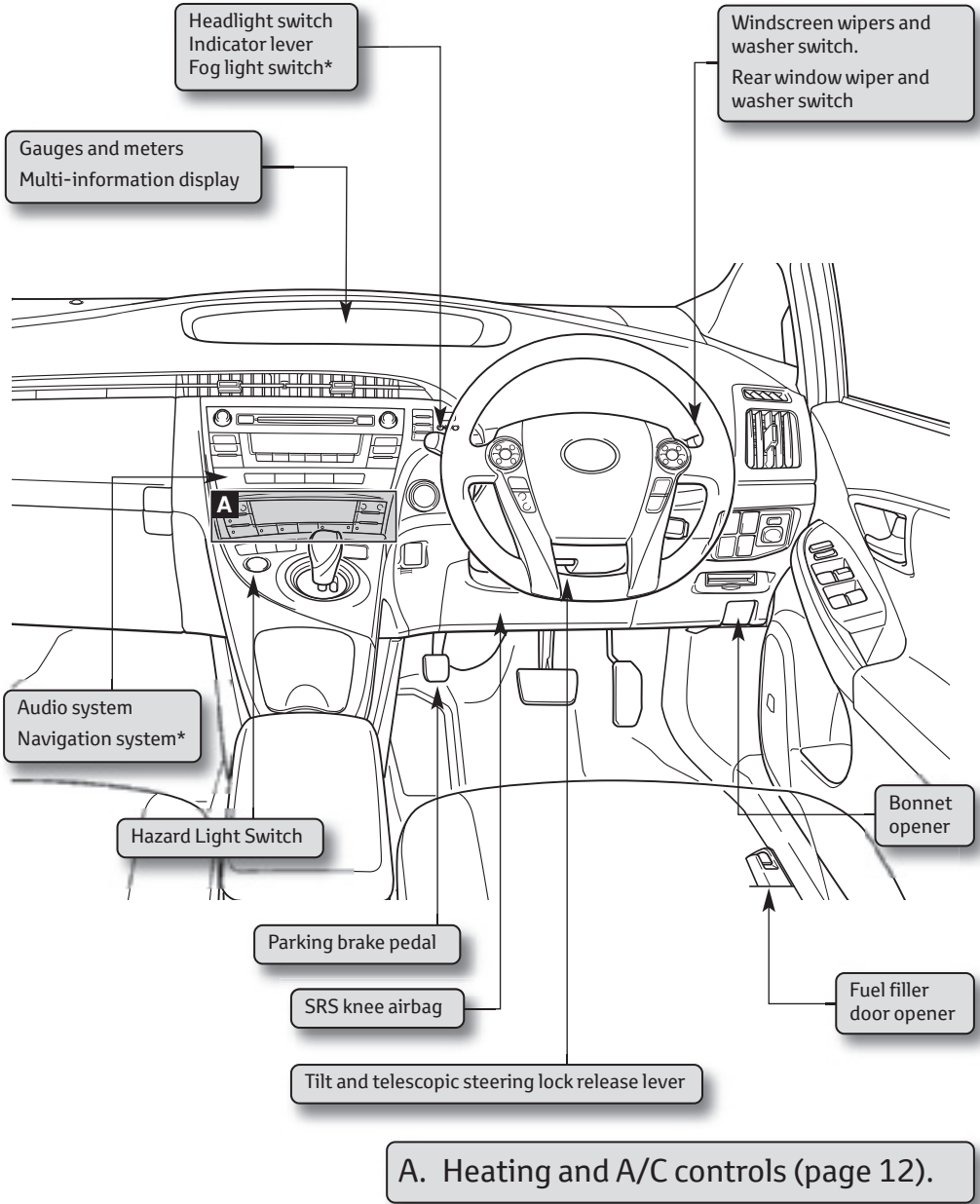
Adjust to the ideal position by moving the steering wheel horizontally and vertically.



After adjustment, pull the lever up to secure the steering wheel.

Steering wheel must not be adjusted while the vehicle is in motion.

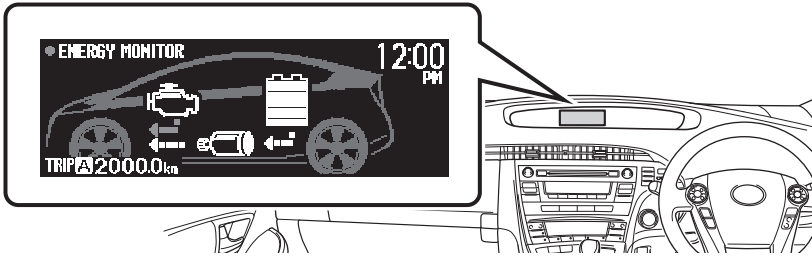
Instrument Panel Overview



* On some models

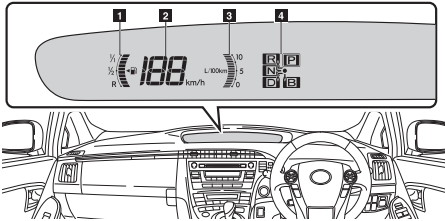
Multi-information display

The multi-information display presents the driver with a variety of driving-related data, including the clock.



Gauges and meters

The following gauges and meters illuminate when the "POWER" switch is in ON mode.



1. Fuel gauge

Displays the quantity of fuel remaining in the tank.

2. Speedometer

Displays the vehicle speed.

3. Instantaneous fuel consumption

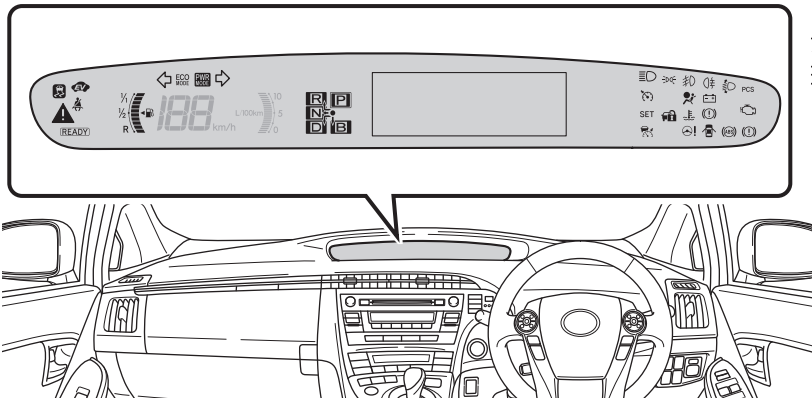
Displays the current rate of fuel consumption.

4. Shift position indicators

Displays the shift position.

Indicators and warning lights

The following gauges and meters illuminate when the "POWER" switch is in ON mode.



Instrument cluster

Main indicators and warning lights only - For details, please refer to your Owner's Manual chapter 5-2.

Indicators and warning lights

The indicators inform the driver of the operating state of the vehicle's main systems.



Shift position indicators



Power mode indicator



Eco Driving Mode indicator



EV-Drive Mode indicator



"READY" indicator

Warning lights

Warning lights inform the driver of malfunctions in any of the vehicle's systems.



Charging system



Brake system warning light/buzzer



Master warning light

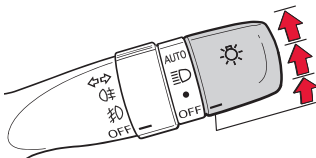


High coolant temperature

These lights turn on when the engine switch is turned to the "ON" position (without smart entry & start system) or the "ENGINE START STOP" switch is turned to the IGNITION ON mode (with smart entry & start system). They will turn off after the engine is started.

There may be a malfunction if a light does not come on, or if the lights do not turn off. Have the vehicle inspected by your Toyota dealer.

Lights



The headlights can be operated manually or automatically



The front position, tail, license plate and instrument panel lights turn on.



The headlights and all lights listed above turn on.

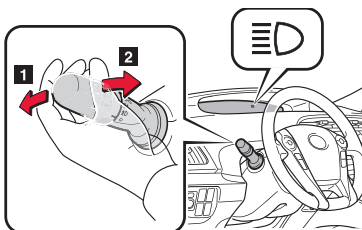


The headlights and all lights listed above turn on and off automatically.

(When the engine is in the "ON" position)


Turning on the high beam headlights

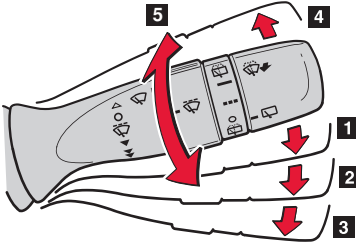
1. With the headlights on, push the lever away to turn on the high beams.
Pull the lever back to the centre position to turn the high beams off.
2. You can flash the high beams with the headlights on or off by pulling the lever towards you, and releasing it to turn them off.



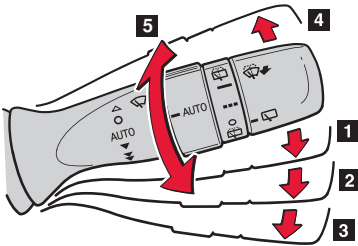
Wipers

Wiper with interval adjuster

Wiper interval can be adjusted for intermittent operation when  is selected).



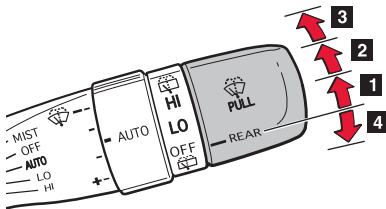
1. Intermittent wiper operation.
2. Low speed wiper operation.
3. High speed wiper operation.
4. Temporary operation.
5. Intermittent frequency.



Wiper with rain-sensing function (AUTO)

With "AUTO" selected, the wiper will operate automatically when detecting rain and adjust timing according to rain volume.

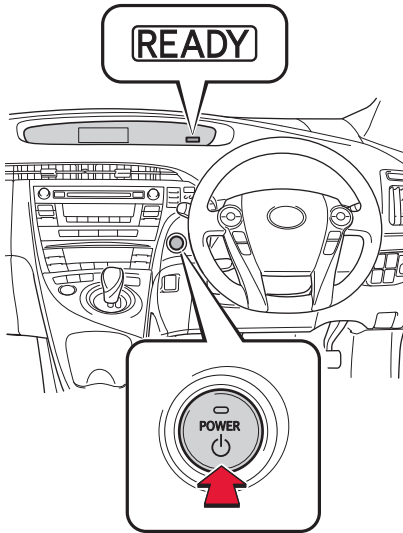
1. Rain-sensing wiper operation.
2. Low speed wiper operation.
3. High speed wiper operation.
4. Temporary operation.
5. Intermittent frequency.



Rear window wiper and washer

1. Intermittent window wiper operation.
2. Normal window wiper operation.
3. Washer/wiper dual operation.
4. Washer/wiper dual operation.

Power (ignition) switch



Starting the hybrid system

Check that the parking brake is set.

Sit in the driver's seat and firmly depress the brake pedal.

The POWER switch indicator turns green.

Press the POWER switch.

The hybrid system can be started from any mode.

After a few seconds, the READY indicator comes on with a beep sound.

The vehicle can move when the READY indicator is on, even if the engine is stopped.

Stopping the hybrid system

1. Stop the vehicle.
2. Press the "POWER" switch.
3. Check that the shift position indicator on the instrument cluster is set in "P".
4. Set the parking brake.
5. Release the brake pedal and check that the indicator on the "POWER" switch is off.

If you stop the hybrid system without setting the shift position to "P", the shift position will be shifted to "P" automatically. You can also shift the shift position to "P" by pressing the "P" position switch.

EV-Drive mode

In EV-Drive Mode the electric motor (traction motor), powered by the hybrid battery (traction battery), is used to drive the vehicle.

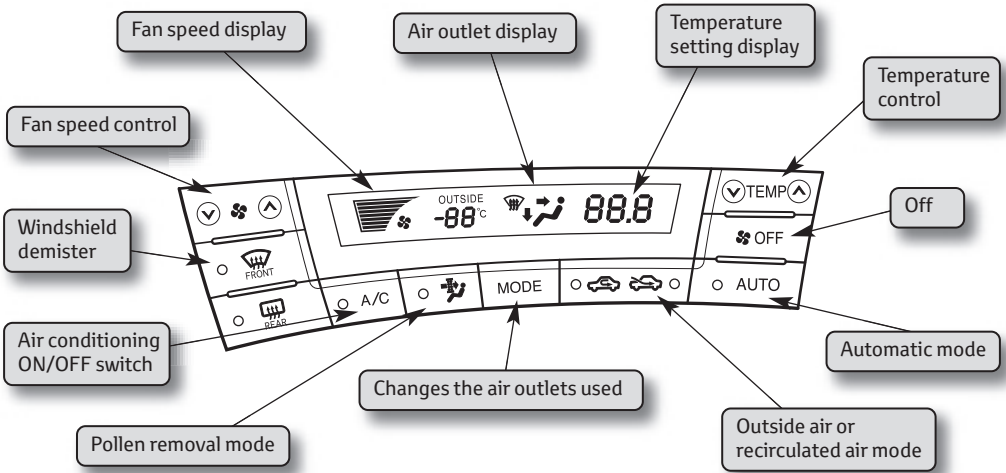


ON/OFF

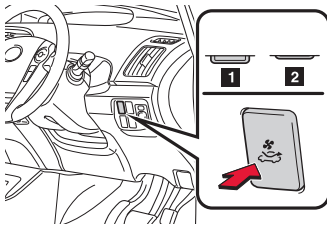
When EV-Drive mode is turned on, the indicator comes on. Pressing the switch again will return to normal driving (gasoline engine and electric motor).

Heating, A/C and de-misting

Airflow and outlets are automatically adjusted according to the temperature setting.



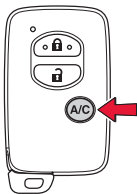
Solar ventilation system



This solar system allows ventilation when the vehicle is parked in direct sunlight

1. Off.
2. On

Remote Air conditioning system



Press and hold the **A/C** to operate the remote air conditioning system.

The system will shut off if a door is opened.

The system can be stopped by pressing the **A/C** twice.

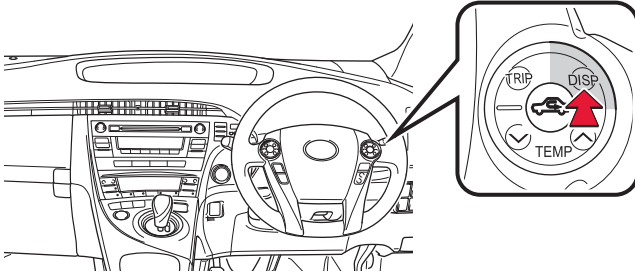
Tips for windscreen demisting :

1. Switch AUTO button off (light is OFF)
2. Switch A/C ON (light is ON)
3. Switch circulation to outside air

4. Switch airflow to windshield (light ON)



Setting the clock



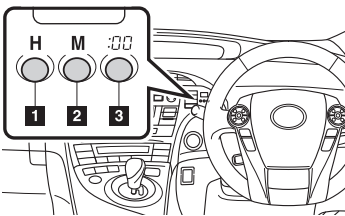
Setting the clock



Select "CLOCK" by pressing the "DISP" switch.
Press and hold the "DISP" switch to enter the setting mode.

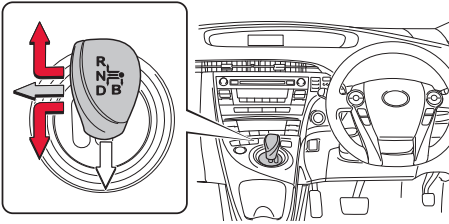


Select "12h" or "24h" by pressing the "DISP" switch.
Press and hold the "DISP" switch to finish setting.



1. Adjust hours.
 2. Adjust minutes.
 3. Round to the nearest hour.*
- *: e.g. 1:00 to 1:29 → 1:00
1:30 to 1:59 → 2:00

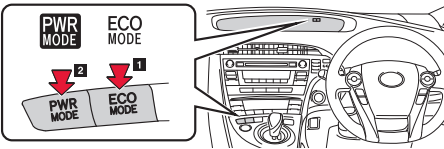
Gear change



- ← You can operate the shift lever only in D.
- ← Keep the shift lever in N for a while after you shift it to that position.
- The shift lever always returns to this original position after shifting position.

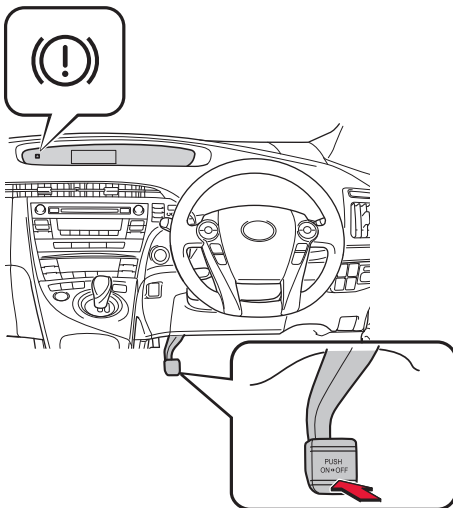
Shift position	Function
P	Parking the vehicle or starting the hybrid system
R	Reversing
N	Neutral
D	Normal driving
B	Engine braking position*

*Shown only while in "D" position



1. Eco driving mode
To help achieve low fuel consumption when having frequent accelerating and braking. Press once more to switch off
2. Power mode
For high level or response such as driving in mountainous regions or overtaking. Press once more to switch off

Parking brake

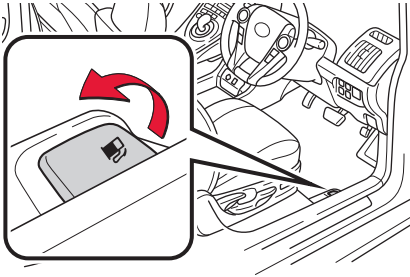


Sets the parking brake*

(Depressing the pedal again releases the parking brake).

*Fully depress the parking brake pedal with your left foot while depressing the brake pedal with your right foot.

Fuel tank opening

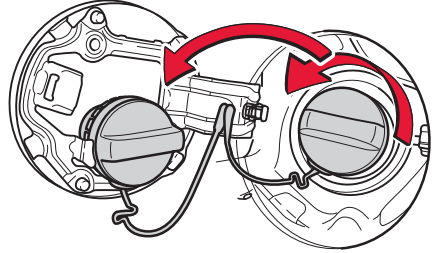


Pull the lever.

Opening the fuel tank cap

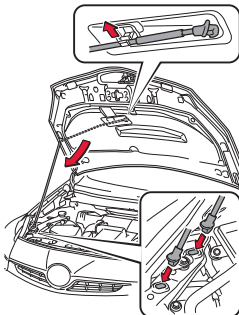
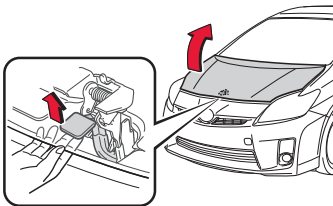
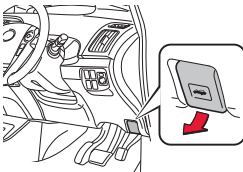
Turn the fuel tank cap slowly to open.

Hang the fuel tank cap on the back of the fuel filler door.



Take care to select the correct fuel.

Bonnet opening



Release the lock from the inside of the vehicle to open the bonnet.

Pull the bonnet release lever.

The bonnet will pop up slightly.

Release the bonnet catch and lift the bonnet.

Caution :

Be careful when you pick up the rod, it might be hot.

Hold the bonnet open by inserting the supporting rod into the slot.

Close: gently drop the bonnet from approximately 200mm

Eco-Driving

What is “Eco-Driving”?’

- **Eco-Driving** = Driving in a more careful and environmentally responsible way
- **Eco-Driving** = Reduced **fuel costs** > Potential saving in the EU of 20 billion euros by 2010
- **Eco-Driving** = Reduced Environmental **impact** > Potential saving in the EU of 50 million tons of CO₂ emissions by 2010.

Eco-Driving Savings

Total potential saving of 20 - 30%.

Roof load increases wind drag and therefore consumption.

Roof Load (Speed at 120 km/hr)	Increased consumption
Luggage rack	5 – 10%
Ski box	10 – 20%
Bicycle rack	30%
Loaded luggage rack	35 – 40%

Low Tyre Pressure result in higher fuel consumption (up to 3% extra from 0.5 bar too low)
Tyre pressures can fall by 2.5 - 5.0% after one month, and by 20% after 5 months.

Open windows increase fuel consumption by an average of 5%.

Air Conditioning can result in **10 - 25%** extra fuel consumption.



Shifting up gear earlier can result in **8%** saving.

How to Eco-Drive?

Starting

- Remove any extra weight and roof load
- Plan your route to avoid detours
- Avoid using your car for short journeys

Checking/maintenance

- Check your tyre pressures regularly
- Service your car according to owner's manual

Driving

- Shift up gear earlier
- Only use electrical accessories when necessary (e.g. A/C)
- Follow and anticipate the traffic flow
- Keep your windows closed (use ventilation system when possible)
- Switch off your engine if you have to wait longer than 30 - 60 seconds

Think&Act



Free Manuals Download Website

<http://myh66.com>

<http://usermanuals.us>

<http://www.somanuals.com>

<http://www.4manuals.cc>

<http://www.manual-lib.com>

<http://www.404manual.com>

<http://www.luxmanual.com>

<http://aubethermostatmanual.com>

Golf course search by state

<http://golfingnear.com>

Email search by domain

<http://emailbydomain.com>

Auto manuals search

<http://auto.somanuals.com>

TV manuals search

<http://tv.somanuals.com>