

# Land Cruiser V8

Brief Guide







TOYOTA

# Table of Contents

---

Accessing your vehicle	2	Wipers	10
Rear door child protection lock	3	Electric windows and windows lock	11
Child restraint system	3	Starting your vehicle	11
Seat and seat belt adjustment	4	Heating, A/C and de-misting	12
Steering wheel adjustment	5	Set up display to access clock setting	13
Instrument panel overview	6	Gear change	14
Functions overview	7	Fuel tank opening	15
Dashboard instruments	8	Bonnet opening	15
Instrument Cluster	8 - 9	Eco-Driving	16
Lights	9		

## Introducing Land Cruiser V8

---

Thank you for buying a Land Cruiser V8. We trust this Brief Guide will enable you to become familiar with your vehicle's basic operations and assist you in enjoying your vehicle.

This brief guide does not replace or substitute the Owner's Manual, which you will find in the vehicle's glove compartment. It is important that you review the full Owner's Manual as well as any further supplementary manuals as this will allow you to familiarise yourself with the operating and safety instructions and to handle the vehicle within its limitations.

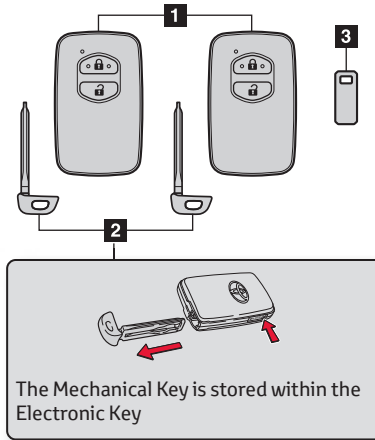
Please do read all documents in your pack as this will ensure you get maximum performance from your car and learn about related services offered.

Your Centre and everyone at Toyota wish you many years of enjoyable driving in your new Land Cruiser V8.

NB: All information contained in this brief guide are current at the time of printing. Toyota reserves the right to make changes at any time without notice.

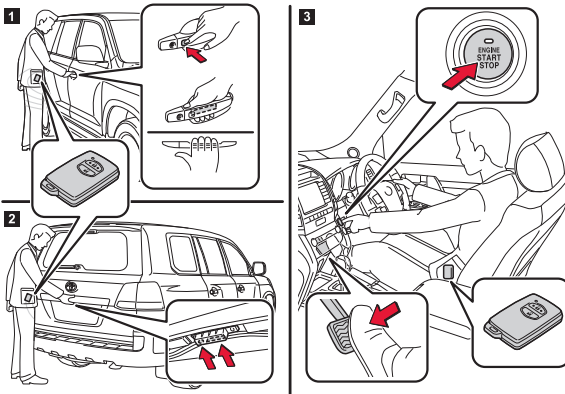
# Accessing your vehicle

1. Electronic keys
  - Operate smart entry & start system.
  - Operate the wireless remote control function.
2. Mechanical keys.
3. Key number plate.

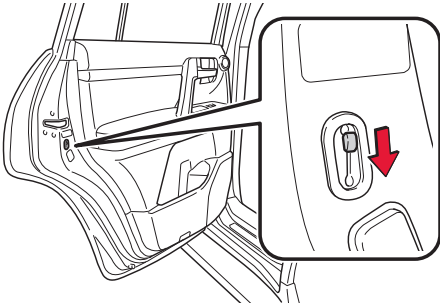


## Smart entry & Start system

The following operations can be performed simply by carrying the electronic key on your person.  
(The driver should always carry the electronic key.)



# Rear door child protection lock



The door cannot be opened from inside the vehicle when the locks are set.

These locks can be set to prevent children from opening the rear doors. Push down the rear door switches to lock the rear doors.

# Child restraint system

Child restraint systems are classified into the following 5 groups according to the regulation ECE No. 44:

Group 0: Up to 10 kg or 22lbs (0-9 months)

Group I: 9-18 kg or 20-40lbs (9 months-4 years)

Group III: 22-36 kg or 48-79lbs(6 years-12 years)

Group 0+: Up to 13 kg or 29lbs (0-2 years)

Group II: 15-25 kg or 33-55lbs (4 years -7 years)

(A) Baby seat  
equal to Group 0 and 0+  
of ECE No. 44



(B) Child seat  
equal to Group 0+, I and II  
of ECE No. 44



(C) Junior seat  
equal to Group III  
of ECE No. 44

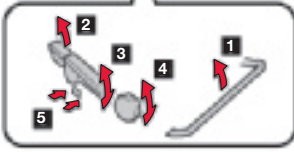


# Seat and seat belt adjustment

## Manual seat

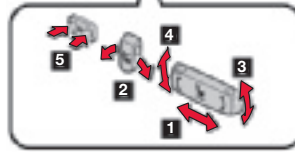
1. Seat position adjustment .
2. Seat back angle adjustment .
3. Vertical height adjustment.\*
4. Seat cushion angle adjustment knob.\*
5. Lumbar support control\*

\*: Driver's side only



## Power seat

1. Seat position fore/aft control.
2. Seat back angle control.
3. Seat cushion (front) angle control.
4. Vertical height control switch.
5. Lumbar support control (driver's side only).

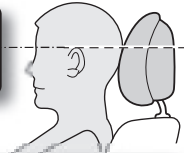


## Head restraint height adjustment

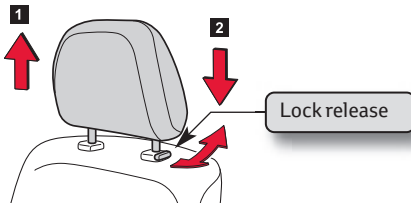
Pull to move upwards.

Press and hold lock release to lower.

The centre of the head restraint should be level with the top of the ears

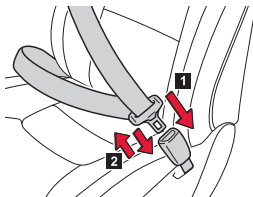


**For reasons of safety your vehicle is fitted with active head restraints**  
**Under no circumstances should any accessories be attached to these (e.g. portable DVD players, etc).**

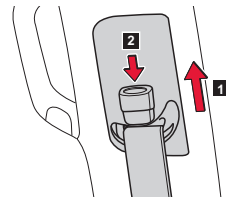


Angle adjustment .

## Seat belts



1. To fasten the seat belt push the tab into the buckle until it clicks.
2. Press the release button to unfasten the seat belt.

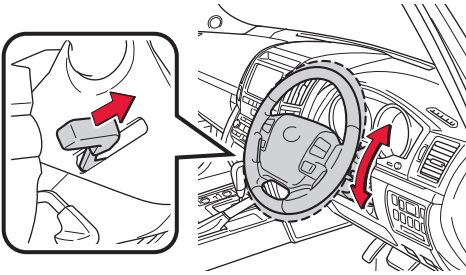


Adjust the height up (1) and down (2) as required.

# Steering wheel adjustment

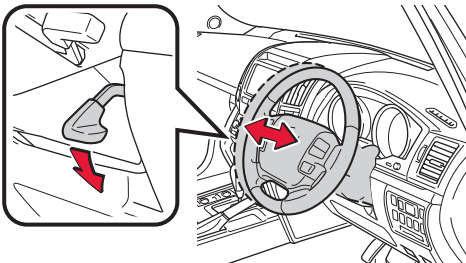
## Manual tilt & telescopic steering

### To change the angle



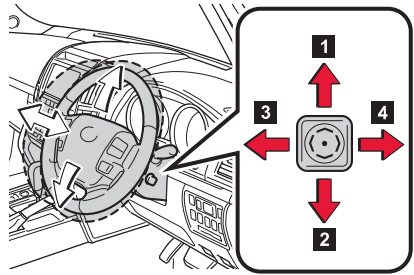
1. Hold the steering wheel and pull the lock release lever towards you.
2. Tilt the steering wheel to the desired angle and release the lever.

### To change the column length



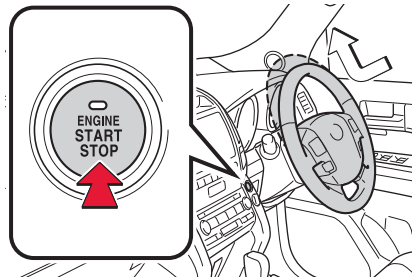
1. Hold the steering wheel and push down the lock release lever.
2. Set the steering wheel to the desired length and return the lever to its original position.

## Power tilt & telescopic steering wheel



1. Tilt up
2. Tilt down
3. Move/extend towards driver
4. Move/retract away from the driver

## Auto tilt away ( vehicles with power tilt & telescopic steering wheel)

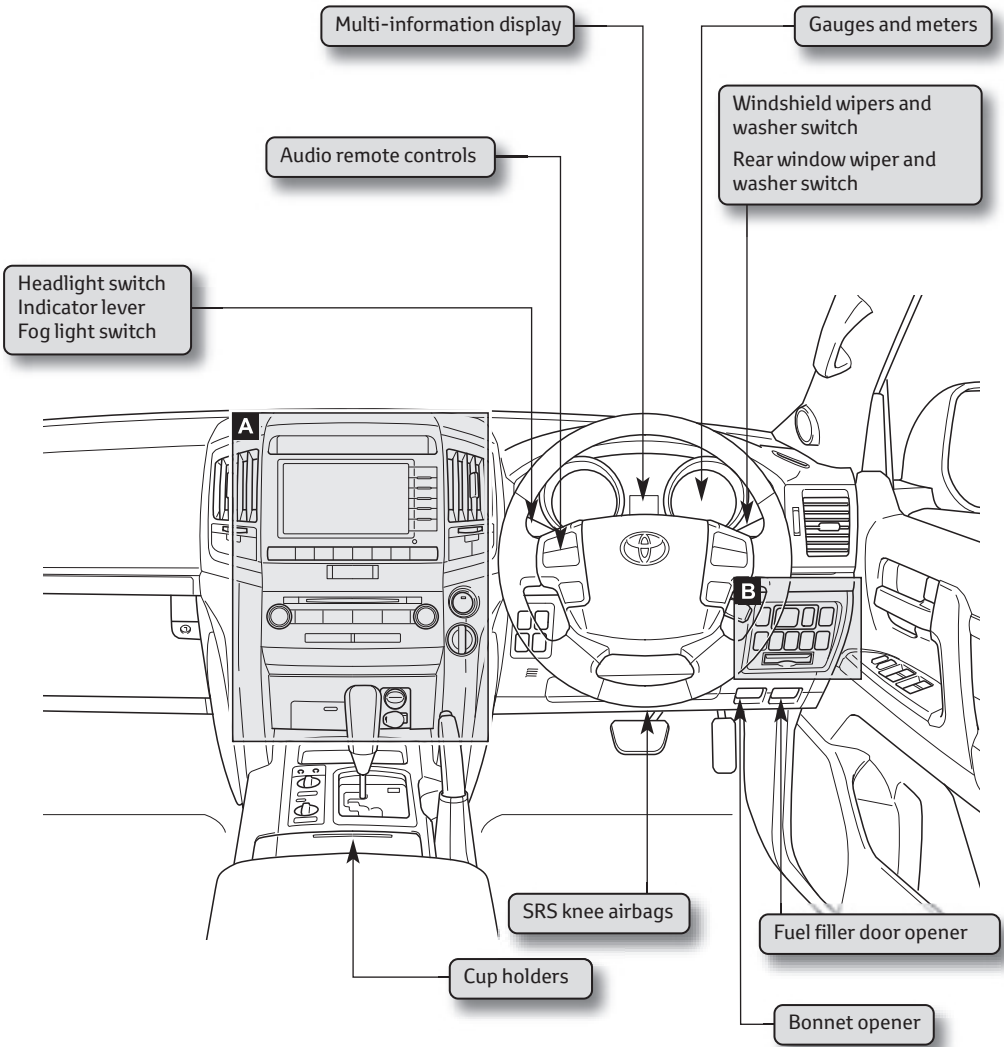


When the "ENGINE START STOP" switch is turned OFF, the steering wheel returns to its stowed position by moving up and away to enable easier driver entry and exit.

Switching to the ACCESSORY / IGNITION mode will return the steering wheel to its original position.

**Steering wheel must not be adjusted while the vehicle is in motion.**

# Instrument panel overview



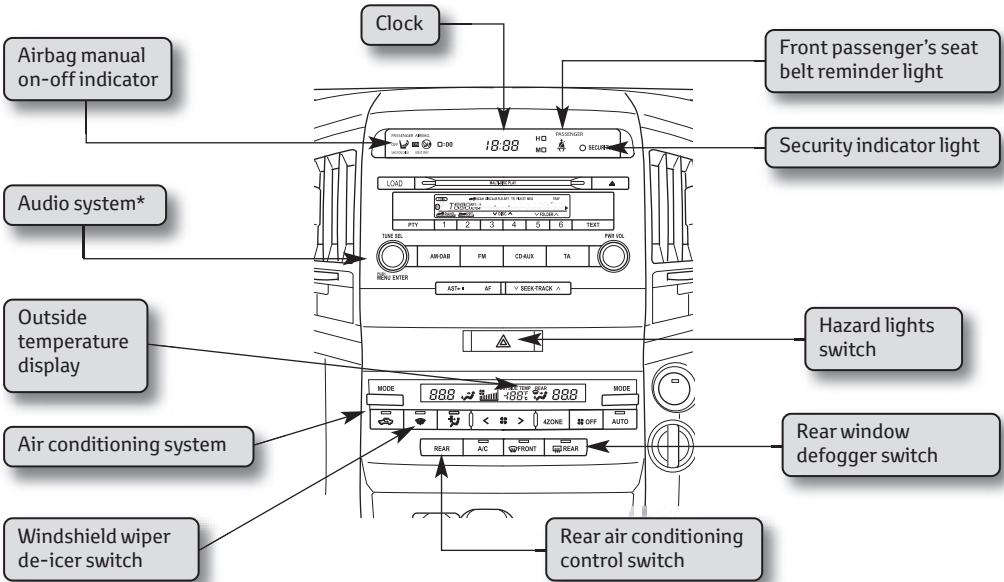
A. Functions overview (page 7)  
B. Dashboard instruments (page 8).



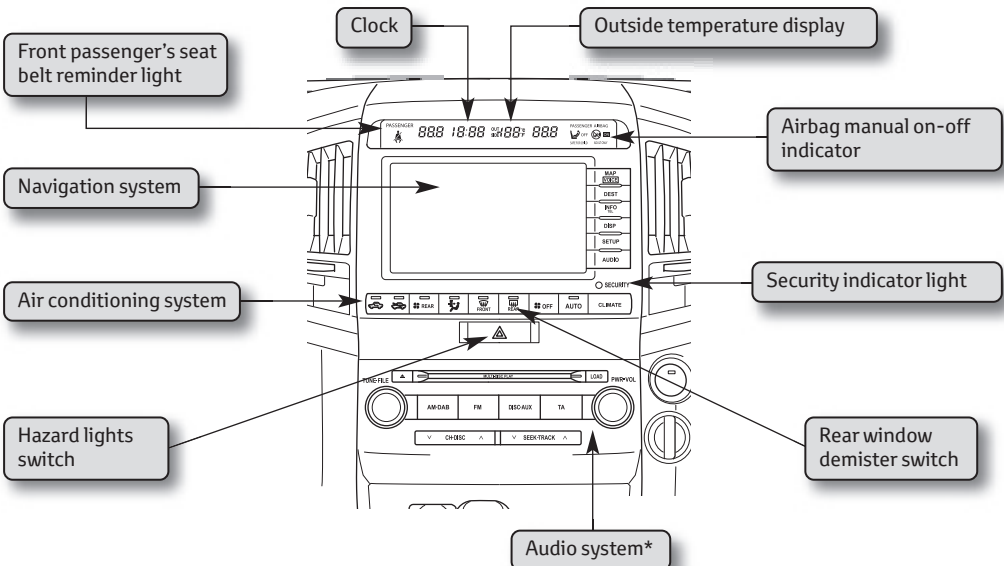
# Functions overview

Area A indicated on instrument panel overview (page 6).

Without navigation system

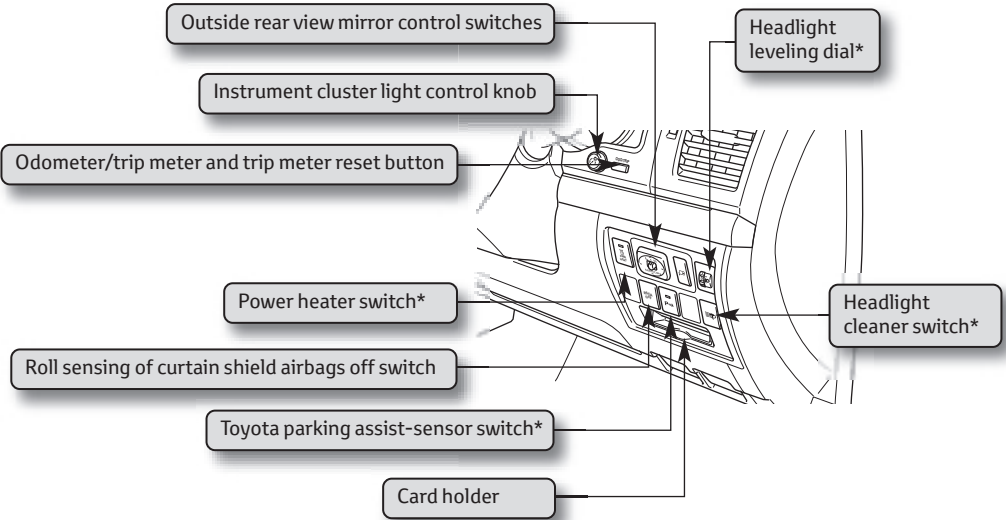


With navigation system



# Dashboard instruments

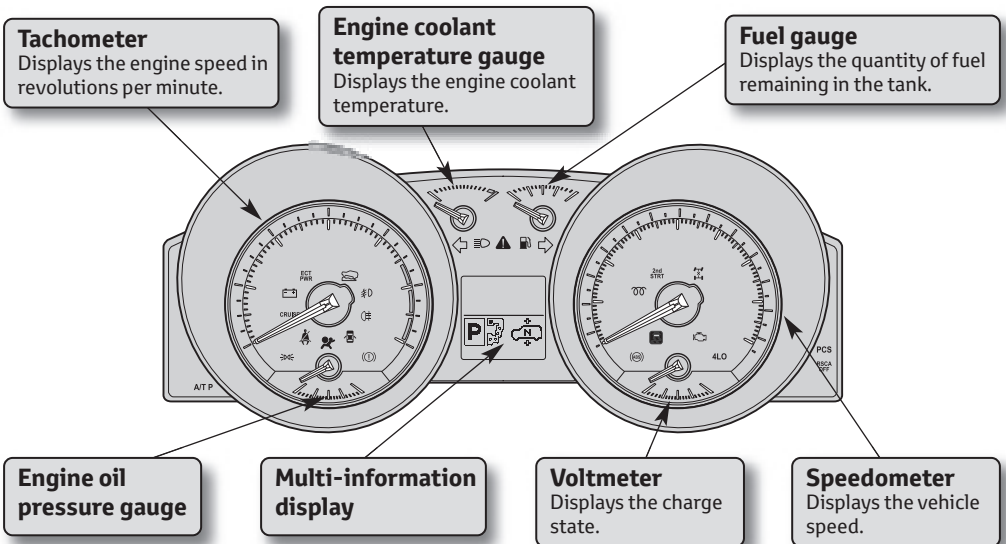
Area B indicated on instrument panel overview (page 6).



\* On some models

# Instrument cluster

The following gauges, meters and displays illuminate when the “ENGINE START STOP” switch is in the IGNITION ON mode.



# Instrument cluster

## Indicators

The indicators inform the driver of the operating state of the vehicle's main systems.



Turn signal indicator



Headlight high beam



Tail light indicator



Front fog light indicator



Rear fog light indicator

## Warning lights

Warning lights inform the driver of malfunctions in any of the vehicle's systems.



PCS

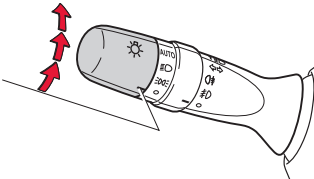


A/T P

These lights turn on when the "ENGINE START STOP" switch is turned to the IGNITION ON mode. They will turn off after the engine is started.

There may be a malfunction if a light does not come on, or if the lights do not turn off. Have the vehicle inspected by your Toyota dealer.

# Lights



## The headlights can be operated manually or automatically

The front position, tail, license plate and instrument panel lights turn on.

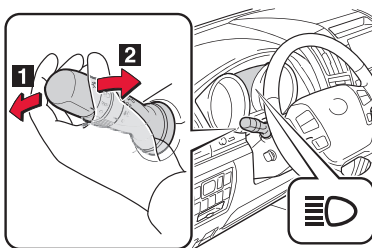


The headlights and all lights listed above turn on, normal driving



The headlights and all lights listed above turn on and off automatically.

(When the engine is in the "IGNITION ON" position)




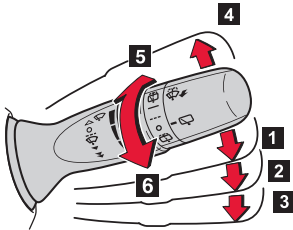
## Turning on the high beam headlights

1. With the headlights on, push the lever away to turn on the high beams.  
Pull the lever back to the centre position to turn the high beams off.
2. You can flash the high beams with the headlights on or off by pulling the lever towards you, and releasing it to turn them off.

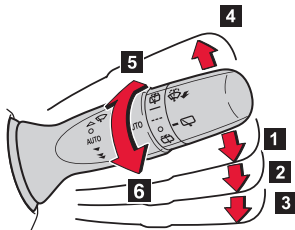
# Wipers

## Wiper with interval adjuster

Wiper interval can be adjusted for intermittent operation when  is selected).



1. Intermittent wiper operation.
2. Low speed wiper operation.
3. High speed wiper operation.
4. Temporary operation.
5. Increase intermittent frequency.
6. Decrease intermittent frequency.

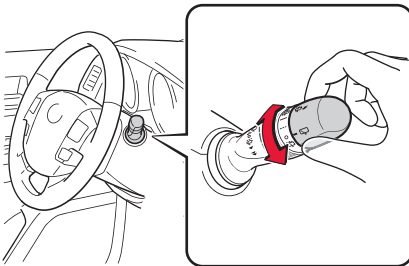


## Wiper with rain-sensing function (AUTO)

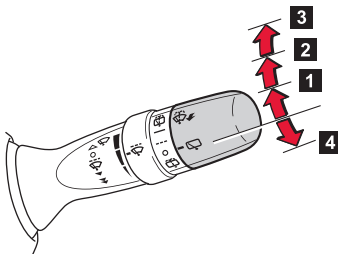
With "AUTO" selected, the wiper will operate automatically when detecting rain and adjust timing according to rain volume.

1. Rain-sensing wiper operation.
2. Low speed wiper operation.
3. High speed wiper operation.
4. Temporary operation.
5. Sensor sensitivity (high).
6. Sensor sensitivity (low).

## Rear window wiper and washer



The rear window wiper and washer can be operated when the "ENGINE START STOP" switch is in the IGNITION ON mode.

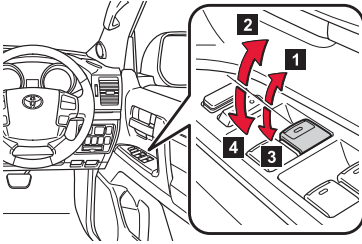


1. Intermittent window wiper operation
2. Normal window wiper operation
3. Washer/wiper dual operation
4. Washer operation

**When the rear window is dry**

**Do not use the wipers, as they may damage the rear window.**

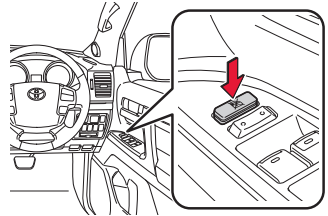
# Electric windows and windows lock



The electric windows can be opened and closed as follows:

1. Closing
2. One-touch closing\*
3. Opening
4. One-touch opening\*

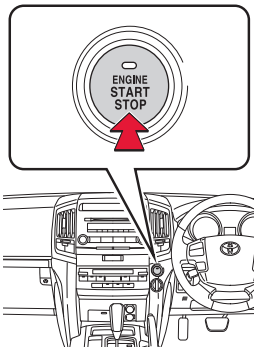
\*To stop the window, press the switch lightly in the opposite direction



Pressing the switch locks the passenger windows preventing accidental opening or closing.

Keep fingers away from moving windows

# Starting your vehicle



While carrying the electronic key on your person, the following operations start the engine or changes "ENGINE START STOP" switch mode.

## Starting the engine

1. Check that the parking brake is set.
2. Check that the shift lever is set in "P".
3. Firmly depress the brake pedal.  
The "ENGINE START STOP" switch indicator turns green.

Press the "ENGINE START STOP" switch.

Continue depressing the brake pedal until the engine is completely started.

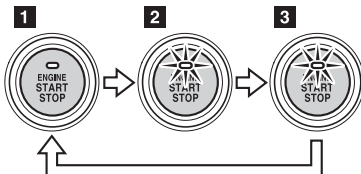
### NB For diesel vehicles:

The engine should not be started until the indicator light goes out.



## "ENGINE START STOP" switch mode

Modes can be changed by pressing the "ENGINE START STOP" switch with the brake pedal released.



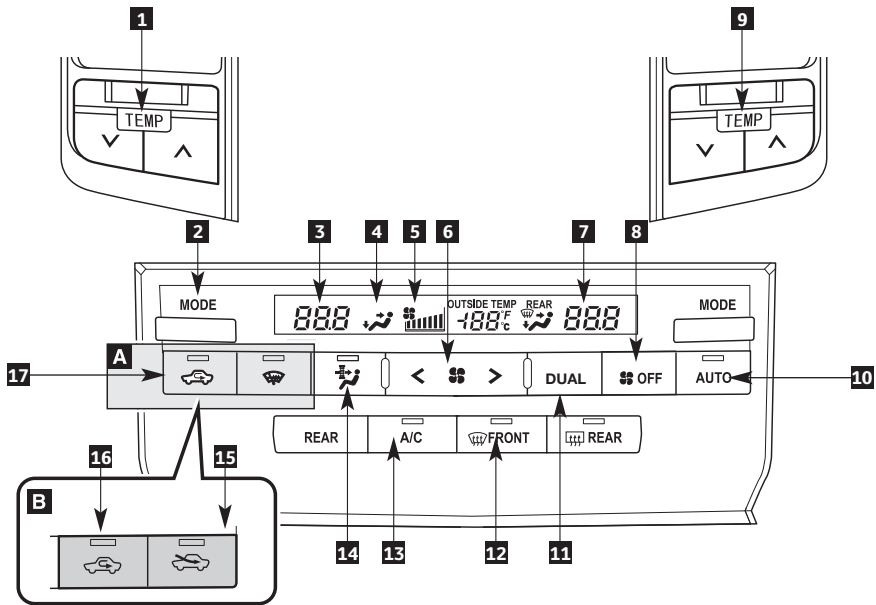
1. OFF
2. ACCESSORY mode
3. IGNITION ON mode

# Heating, A/C and de-misting

## Front air conditioning system

With navigation system : Please refer to your Navigation System Owner's manual.

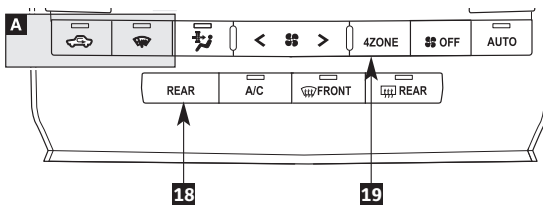
Without navigation system :



A. Vehicles with windshield de-icer

B. Vehicles without windshield de-icer

## With rear air conditioning system



1. Passenger's side temperature control.

2. Changes the air outlets used.

3. Passenger's side temperature setting display.

4. Airflow display.

5. Fan speed display.

6. Fan speed.

7. Driver's side temperature setting display.

8. Off\*

9. Driver's side temperature control.

10. Automatic mode.

11. Dual operation switch.

12. Windshield defogger.

13. Air conditioning on/off switch.

14. Pollen removal mode.

15. Outside air mode.

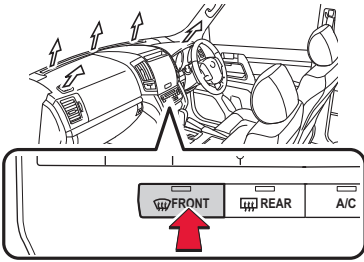
16. Recirculated air mode.

17. Outside air or recirculated air mode.

18. Rear air con mode.

19. 4 zone operation switch.

## De-misting the windshield



Press

The air conditioning system control operates automatically.

Recirculated air mode will automatically switch to outside air mode.

## Set up display to access clock setting

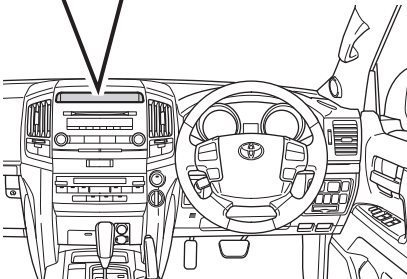
### With Navigation system

Please refer to your Navigation System Owner's Manual.

### Without Navigation system

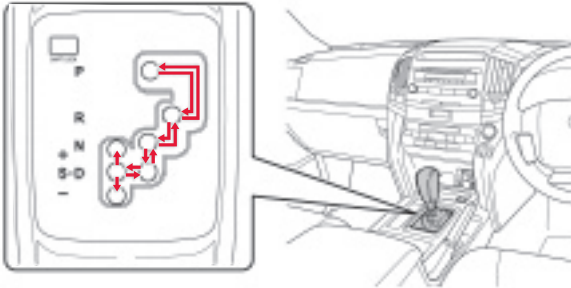


1. Adjust hours.
2. Adjust minutes.
3. Round to the nearest hour.



# Gear change

## Automatic transmission

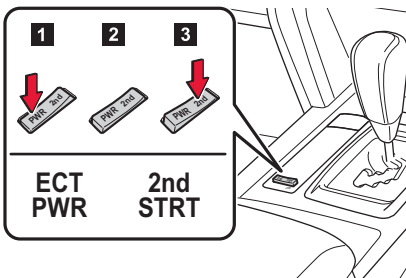


While the “ENGINE START STOP” switch is in the IGNITION MODE ON, depress and hold the brake pedal and move the gear lever.

D = normal automatic driving style

S = Control the engine braking forces

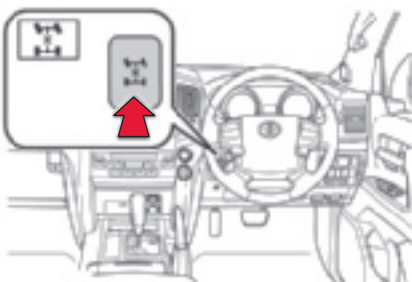
## Selecting a driving mode



The following patterns can be selected to suit current driving and operating conditions.

1. Power mode  
For powerful acceleration and driving in mountainous regions.
2. Normal mode
3. Second start mode  
For starting on slippery road surfaces, such as on snow.  
Press 2nd to return to normal mode.

## Centre differential lock/unlock switch



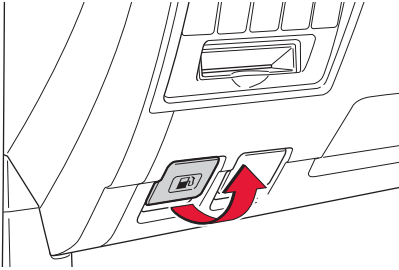
Lock the centre differential when your vehicle's wheels get stuck or when driving on a slippery or bumpy surface.  
Unlock after they have been freed.



# Fuel tank opening

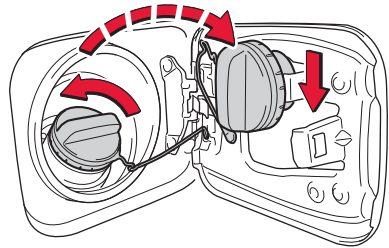
## Before refueling the vehicle

Turn the "ENGINE START STOP" switch OFF and ensure that all the doors and windows are closed.  
Pull the lever.



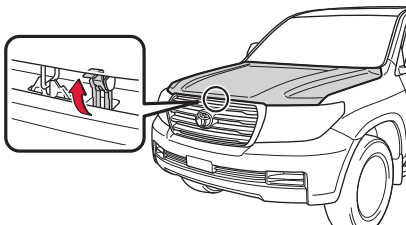
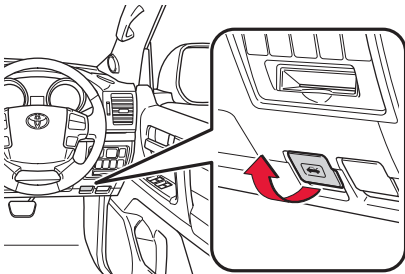
## Opening the fuel tank cap

Turn the fuel tank cap slowly to open.  
Hang the fuel tank cap on the back of the fuel filler door



**Take care to select the correct fuel.**

# Bonnet opening



Release the lock from the inside of the vehicle to open the bonnet.

1. Pull the bonnet release lever.  
The bonnet will pop up slightly
2. Lift the bonnet catch and lift the bonnet

# Eco-Driving

## What is “Eco-Driving”?

- **Eco-Driving** = Driving in a more careful and environmentally responsible way
- **Eco-Driving** = Reduced **fuel costs** > Potential saving in the EU of 20 billion euros by 2010
- **Eco-Driving** = Reduced Environmental **impact** > Potential saving in the EU of 50 million tons of CO<sub>2</sub> emissions by 2010.

## Eco-Driving Savings

**Total potential saving of 20 - 30%.**

**Roof load** increases wind drag and therefore consumption.

Roof Load (Speed at 120 km/hr)	Increased consumption
Luggage rack	5 – 10%
Ski box	10 – 20%
Bicycle rack	30%
Loaded luggage rack	35 – 40%

**Low Tyre Pressure** result in higher fuel consumption (up to 3% extra from 0.5 bar too low)  
Tyre pressures can fall by 2.5 - 5.0% after one month, and by 20% after 5 months.



**Open windows** increase fuel consumption by an average of 5%.

**Air Conditioning** can result in **10 - 25%** extra fuel consumption.

**Shifting up gear earlier** can result in **8%** saving.

## How to Eco-Drive?

### Starting

- Remove any extra weight and roof load
- Plan your route to avoid detours
- Avoid using your car for short journeys

### Checking/maintenance

- Check your tyre pressures regularly
- Service your car according to owner's manual

### Driving

- Shift up gear earlier
- Only use electrical accessories when necessary (e.g. A/C)
- Follow and anticipate the traffic flow
- Keep your windows closed (use ventilation system when possible)
- Switch off your engine if you have to wait longer than 30 - 60 seconds

Think&Act







## Free Manuals Download Website

<http://myh66.com>

<http://usermanuals.us>

<http://www.somanuals.com>

<http://www.4manuals.cc>

<http://www.manual-lib.com>

<http://www.404manual.com>

<http://www.luxmanual.com>

<http://aubethermostatmanual.com>

Golf course search by state

<http://golfingnear.com>

Email search by domain

<http://emailbydomain.com>

Auto manuals search

<http://auto.somanuals.com>

TV manuals search

<http://tv.somanuals.com>