

USB2.0

T.sonic™ 310

User's Manual

P/N : TS512MMP310

P/N : TS1GMP310

Transcend
Exceeding Your Expectations

Introduction	1
Package Contents	1
Features	1
System Requirements	1
Reminders	2
Caution: Risk of Deafness.....	2
Product Overview	2
Charging the Battery	3
LED Description	3
Basic Operation	4
Power On	4
Power Off	4
Play a Track	4
Pause a Track.....	4
Advance to Next Track	4
Reverse to Previous Track.....	4
Fast Forward	4
Fast Rewind.....	5
Increase Volume	5
Decrease Volume	5
Lock.....	5
Driver Installation	6
Driver Installation for Windows® 98SE.....	6
Driver Installation for Windows® Me, 2000, and XP	6
Driver Installation for Mac™ OS 10.0 or Later.....	7
Driver Installation for Linux™ Kernel 2.4 or Later	7
Utility Installation	8
PC-Lock Function	8
PC-Lock Function for Windows® 98SE, Me, 2000, and XP	8
Lock Your Computer.....	9
Unlock Your Computer	9
Boot-Up Function	10
System Requirements for the Boot-Up Function.....	10
Enabling the Boot-Up Function	10
Partition & Security Function	11
Partition Types	11
Access Data in the Private Area	12

Log Out of the Private Area.....	12
Change Password.....	12
If You Forget the Password.....	13
Recovery Function	13
Safely Remove Your T.sonic™ 310	14
Remove the T.sonic™ 310 in Windows® 98SE.....	14
Remove the T.sonic™ 310 in Windows® Me, 2000, and XP	14
Remove the T.sonic™ 310 in Mac™ OS 10.0, or Later and Linux™ Kernel 2.4, or Later ...	14
Troubleshooting	15
Specifications	17
Ordering Information.....	17
T.sonic Limited Warranty.....	18

Introduction

Congratulations on purchasing Transcend's **T.sonic™ 310**, a unique device that combines a **USB Flash Drive** with an **MP3 Player**. You can now store your files, folders, documents, photos and music on one tiny device that will also allow you to play your music. The **T.sonic™ 310** plugs directly into your desktop or notebook computer, is easy to use and includes an amazing TouchPad controller.

Package Contents

The **T.sonic™ 310** package includes the following items:

- **T.sonic™ 310**
- Lanyard Earphones
- Driver CD
- USB extension cable
- Quick Instruction Guide

Features

- MP3 Player which supports MP3 and WMA formats
- USB 2.0 compliant and USB 1.1 backwards compatible
- Internal Li-ion battery supports up to 18 hours of continuous play when fully charged
- TouchPad controller
- Easy Plug and Play installation
- PC-Lock feature allows you to use the **T.sonic™ 310** as a key to your computer
- Boot-Up feature allows you to make your **T.sonic™ 310** a bootable device
- Partition feature allows you to create a private and password protected partition on your **T.sonic™ 310**
- Flash Drive is powered directly via the USB port
- LED indicates the usage status of the **T.sonic™ 310**

System Requirements

Desktop or notebook computer with a working USB port

One of following operating systems:

- Windows® 98SE
- Windows® Me
- Windows® 2000
- Windows® XP
- Mac™ OS 10.0 or later
- Linux™ Kernel 2.4 or later

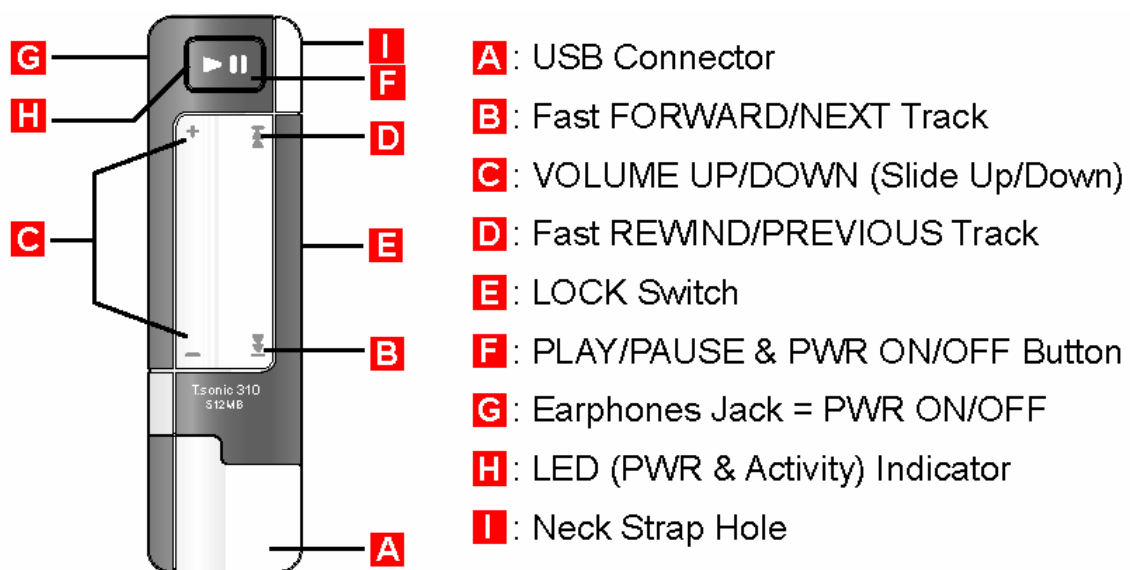
Reminders

1. Keep your **T.sonic™ 310** away from heat, direct sunlight, and moisture. Do not bend, flex, or drop your **T.sonic™ 310**.
2. Make sure the **LOCK** switch is set to the “**OFF**” position before trying to Power-On the unit.
3. Always plug or unplug your **T.sonic™ 310** by grasping the unit's sides.
4. Follow the procedures in the “**Safely Remove Your T.sonic™ 310**” section to remove your **T.sonic™ 310** from the system.

Caution: Risk of Deafness

1. Repeated or regular use of headphones or earphones at volume levels above 80 decibels can give a false impression that the audio level is not high enough. End users may try to progressively increase the volume control, therefore risking a dangerous noise level for their ears.
2. To protect your health and your hearing, keep the volume of your MP3 player below 80 decibels and do not use it for an extended period of time. Stop use if symptoms like headaches, nausea, or hearing disorders occur.
3. Your MP3 player is limited to a volume level of 100 decibels.
4. Both the MP3 player and the earphones are compliant with the French regulation concerning musical Walkmans (24th July 1998 Order).
5. Before using other headphones, confirm that their technical specifications are compatible with the original set.

Product Overview



Charging the Battery



Before using the T.sonic™ 310 for the first time it is necessary to charge the battery for at least 12 hours.

1. Plug the **T.sonic™ 310** into your desktop or notebook computer.
2. A red LED indicates the battery is being charged.
3. When the LED turns green the battery is fully charged.
4. It takes the **T.sonic™ 310's** battery approx. 4 hours to fully charge, and approx. 3 hours to become 80 percent charged.
5. A fully charged battery will give you approx. 18 hours of continuous MP3 playtime.

LED Description



On first sighting a Red LED you have approximately 2 hours of battery life remaining

MP3 Player Mode

- During Playback a Green LED indicates you do NOT need to charge the battery.
- A Red LED indicates that you need to charge the battery. On first seeing a Red LED you have approx. 3 hours of battery life left.
- If you wish to turn on your **T.sonic™ 310** when the Lock switch is ON, the LED will appear Red in color.
- If you turn on your **T.sonic™ 310** and no music files have been loaded onto the player, the LED will firstly be Green in color to indicate that the player is ON, but then it will Flash Red.



Flash Drive Mode

- A Green LED indicates that the battery is fully charged.
- A Red LED indicates that you need to charge the battery.



Basic Operation



To use as an MP3 Player you must plug in the Earphones. If the T.sonic™ 310 stops working, simply plug out and plug in the earphones to reset the player.

Power On

Plug in the Earphones and press the **PLAY/PAUSE Button** to power on the unit. A Green LED indicates activity and a positively charged battery, a Red LED indicates an illegal action, or that the battery needs to be charged.

Power Off

Press and hold the **PLAY/PAUSE Button** until the LED turns off (power-off sound heard), or unplug the earphones.

Play a Track

Press the **PLAY/PAUSE Button** to play an MP3, or WMA track.

Pause a Track

Press the **PLAY/PAUSE Button** during Playback to pause a track. If pausing a track for more than 5 minutes, the T.sonic™ 310 will automatically turn off to save power.

Advance to Next Track

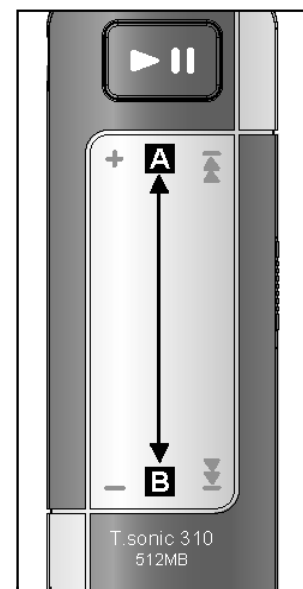
Tap/Touch the TouchPad **[B]** to advance to the next track.

Reverse to Previous Track

Tap/Touch the TouchPad **[A]** to go back to the previous track.

Fast Forward

Press and hold the TouchPad **[B]** to Fast-Forward a track.



Fast Rewind

Press and hold the TouchPad **[A]** to Fast-Rewind a track.

Increase Volume

Slide up **[B to A]** on the TouchPad to increase the volume level.

Decrease Volume

Slide down **[A to B]** on the TouchPad to decrease the volume level.

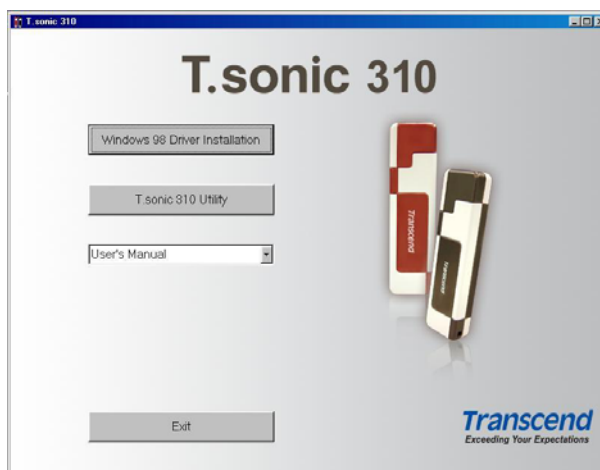
Lock

When the Lock switch is set to the “” Locked position all of player’s functions are disabled.

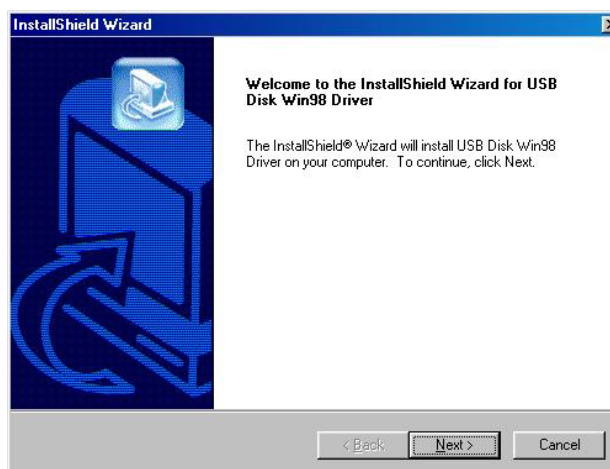
Driver Installation

Driver Installation for Windows® 98SE

1. Put the Driver CD into the CD-ROM (Auto-Run supported). Select the **Window® 98 Driver Installation** button.



2. Select **“Next”** to continue.



3. The InstallShield Wizard will guide you through the installation process.
4. After the drivers have been installed, plug your **T.sonic™ 310** into an available USB port. The **New Hardware Found** dialogue boxes will appear.
5. Your computer will automatically detect this new device. A new **Removable Disk** drive with a newly assigned drive letter will appear in the **My Computer** window.

Driver Installation for Windows® Me, 2000, and XP

No drivers are required. These Windows operating systems have built-in drivers to support the **T.sonic™ 310**. Simply plug your **T.sonic™ 310** into an available USB port and Windows will install the files needed. A new **Removable Disk** drive with a newly assigned drive letter will appear in the

My Computer window.

Driver Installation for Mac™ OS 10.0 or Later

No drivers are required. Just plug your **T.sonic™ 310** into an available USB port and your computer will automatically detect it.



Driver Installation for Linux™ Kernel 2.4 or Later

No drivers are required. Just plug your **T.sonic™ 310** into the USB port and mount it.

Example:

1. Create directory for **/mnt/T.sonic** first:
`mkdir /mnt/T.sonic`
2. mount **T.sonic**:
`mount -a -t msdos /dev/sda1 /mnt/T.sonic`

Utility Installation

1. Put the Driver CD into the CD-ROM (Auto-Run supported). Select the **T.sonic™ 310 Utility** button.
2. Follow the on-screen instructions to complete the utility installation.
3. Execute the utility program in Start -> Programs -> T.sonic 310 -> T.sonic 310 Utility.



PC-Lock Function

Once the PC-Lock function is enabled, you can use your **T.sonic™ 310** as a key to lock your computer, protecting it from being used by other users.

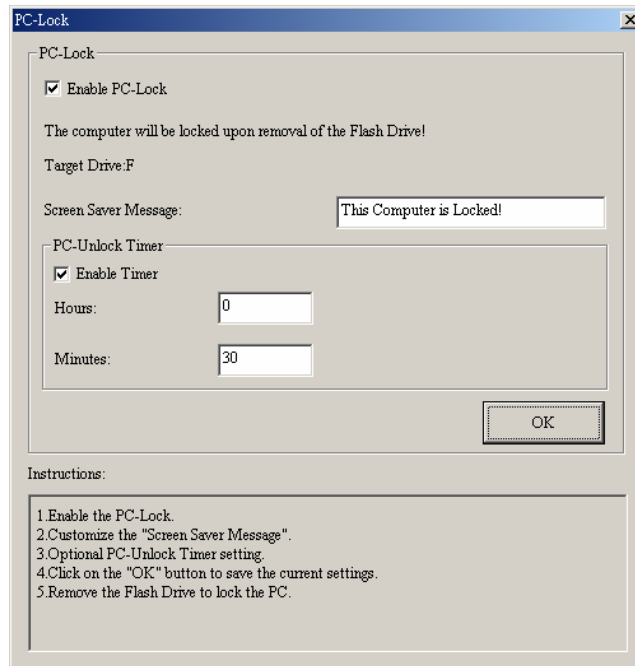
- ❖ The PC-Lock function is not supported in Mac or Linux Operating Systems.
- ❖ To use the PC-Lock function, you must log in to the Windows OS with **Administrator** rights.

PC-Lock Function for Windows® 98SE, Me, 2000, and XP

1. Select the **PC-Lock** button in the **T.sonic™ 310 Utility** window.



2. The following window will appear.



3. In this window you can Enable the **PC-Lock** function, change the **Screen Saver Message** and the **PC-Unlock Timer**.

Lock Your Computer

After the PC-Lock function is enabled, your computer will be locked whenever you remove your **T.sonic™ 310**. If your computer is locked, the screen will display the locked status as shown below.



Unlock Your Computer

To unlock your computer, you must re-insert your **T.sonic™ 310**. The locked status on the screen will disappear and you are now free to use your computer. The computer's locked status will also be relinquished automatically after the lock time has expired.

Boot-Up Function

T.sonic™ 310 can be configured to serve as an MS-DOS Boot Disk. Upon completion of this procedure, the **T.sonic™ 310** can be used to boot-up your computer, allowing you to run MS-DOS programs. This does not make the **T.sonic™ 310** a Rescue Disk for Windows, nor does it put Windows Startup files onto your **T.sonic™ 310**. After booting with **T.sonic™ 310**, if you wish to enter Windows, you must start Windows from your hard drive, or a previously created Rescue Disk.

- ❖ To use the Boot-Up function, you must log in to the Windows OS with **Administrator** rights.

System Requirements for the Boot-Up Function

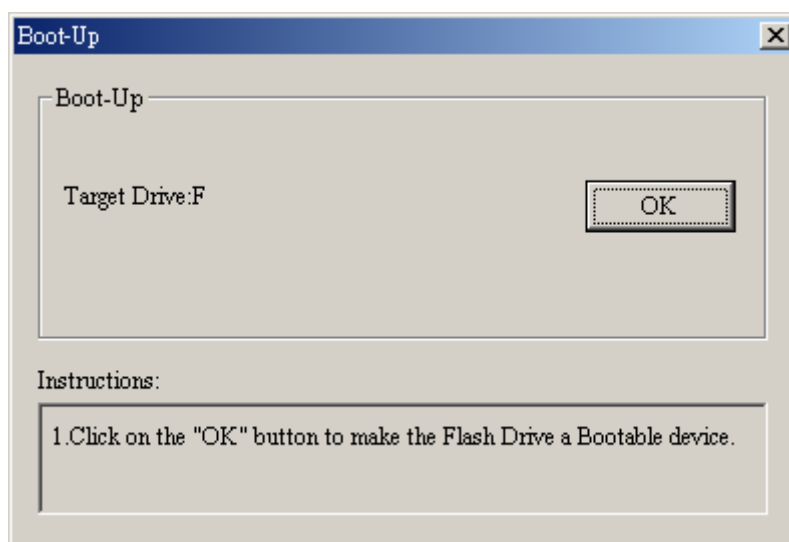
- A desktop or notebook computer that supports **USB-ZIP**, or **USB-HDD** as the **First Boot Device** in **BIOS**

Enabling the Boot-Up Function

1. Select the **Boot-Up** button in the **T.sonic™ 310 Utility** window.



2. The following window will appear, choose the boot-up type you need (**USB HDD** or **USB ZIP**, whichever has been set as the **First Boot Device** in **BIOS**) and select **Create Boot Disk**.



3. Click on the "OK" button to make the Flash Drive a Bootable device.

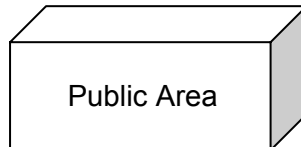
Partition & Security Function

Partition Types

You can partition the **T.sonic™ 310** into two partition types. The two types are:

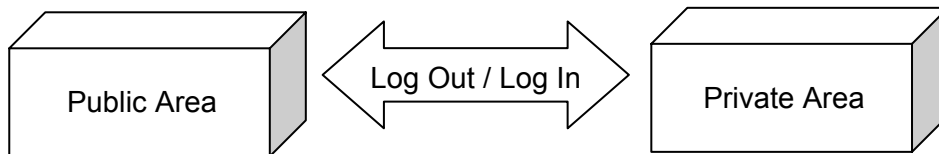
Type 1: “Public Area Only”

This is the default partition type for the **T.sonic™ 310**. It allows the entire volume of the **T.sonic™ 310**'s memory to be accessed by anyone. No secure data area is established.



Type 2: “Public and Private Area”

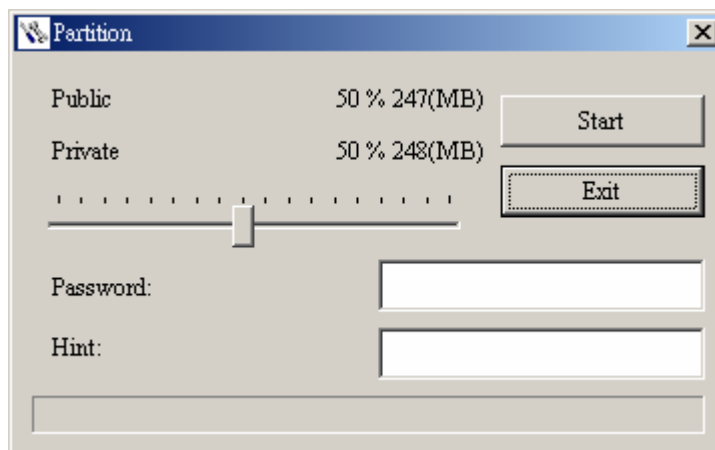
T.sonic™ 310 is partitioned into a single Logical Unit Number (LUN) identified device, which contains a **Public Area** and a **Private Area**. Secure data can be established in the **Security Area**, which is protected by a password. Access to data in the **Public Area** is unrestricted.



1. Select the **Partition** button in the **T.sonic™ 310 Utility** window.



2. The following window will appear.

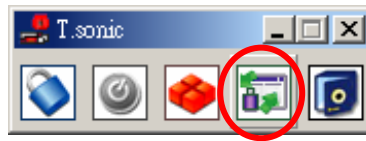


3. Adjust the partition percentages to your liking using the partition bar. Key in a Password to login to the Private Area and a Hint as a reminder, just in case you forget your password.

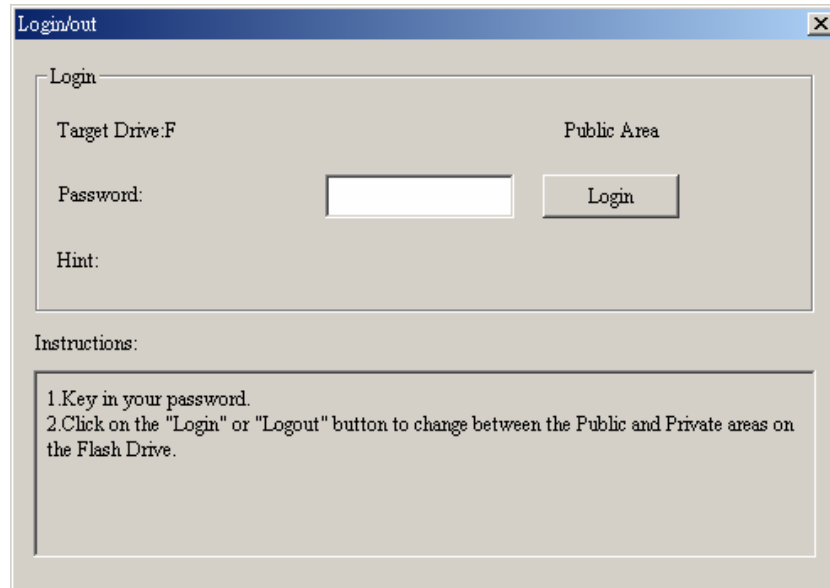
4. Click on the “**Start**” button to complete the partition setup.

Access Data in the Private Area

1. Select the **Login/out** button in the **T.sonic™ 310 Utility** window.



2. The following window will appear.



3. Enter the correct password and select **Login**.
4. The **Private Area** will now appear and is ready for use.

Log Out of the Private Area

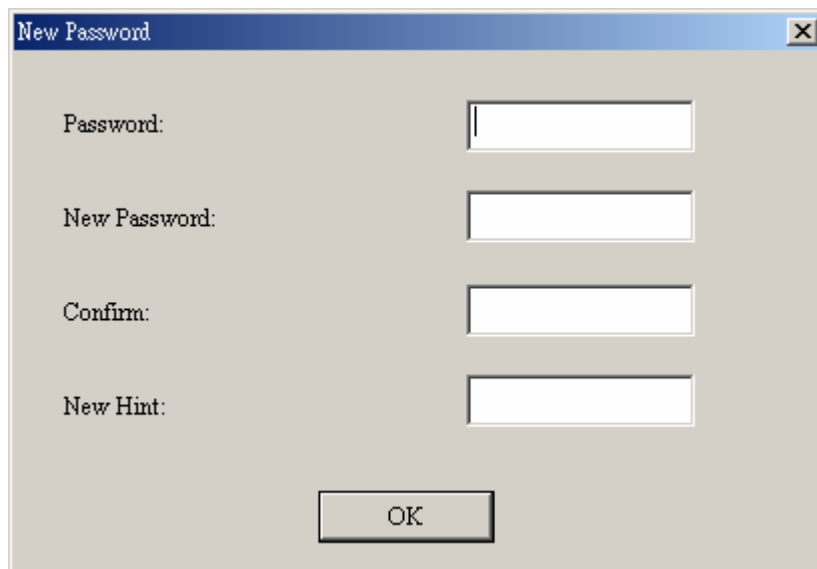
1. Make sure that all files are closed and that no data is being transferred to, or from your **T.sonic™ 310**.
2. Click the **Logout** button in the **T.sonic™ 310 Utility** window. Once you have successfully completed the **Log Out** procedure for the **Private Area** of your **T.sonic™ 310**, only data in the **Public Area** will be accessible.

Change Password

1. Select the **Password** button in the **T.sonic™ 310 Utility** window.



2. The following window will appear.



The image shows a standard Windows-style dialog box titled "New Password". It has a light gray background and a blue title bar with a close button (X) in the top right corner. The dialog contains four text input fields, each preceded by a label: "Password:", "New Password:", "Confirm:", and "New Hint:". Below these fields is a single "OK" button.

3. Input the **Old Password**, and **New Password** and the **Confirm New Password** in each field (Maximum size for a password is 8 characters). You can also input a **Password Hint** to set up a reminder for your new password. Select "OK."

If You Forget the Password

If you forget your password, you can use the password hint to remember it. If you cannot recall the password using the password hint, then all you can do is run the **Partition** function again to repartition your **T.sonic™ 310**. Unfortunately, all your "Private area" data will be lost during this procedure. You will have the chance to make a backup copy of your data in the "Public area" but all data in the "Private area" is permanently lost.

Recovery Function

If your **T.sonic™ 310** is ever damaged, you can use the **Recovery** program to restore the unit's default settings. Before using the **Recovery** function, please read the following sections carefully.

- ❖ The Recovery function is not supported in the Mac or Linux Operating Systems.
- ❖ To use the Recovery function, you must log in to the Windows OS with **Administrator** rights.
- ❖ Running the Recovery program will erase all of the data on your **T.sonic™ 310**.
- ❖ If there are bad blocks in the flash memory chip of the **T.sonic™ 310**, the memory size of the **T.sonic™ 310** after running the Recovery program will be smaller than the original memory size.

1. Execute the recovery utility in Start -> Programs -> T.sonic 310 -> Recovery
2. The following window will appear.




3. Select **“Start”** to recover your **T.sonic™ 310** to its factory defaults.

Safely Remove Your T.sonic™ 310

Remove the T.sonic™ 310 in Windows® 98SE

Unplug your **T.sonic™ 310** from your system directly when data is not transferring.

Remove the T.sonic™ 310 in Windows® Me, 2000, and XP

1. Select the  icon on the system tray.
2. The **Safely remove Hardware** pop-up menu will appear. Select to continue.



3. A message box will appear stating: **The ‘USB Mass Storage Device’ device can now be safely removed from the system.**



Remove the T.sonic™ 310 in Mac™ OS 10.0, or Later and Linux™ Kernel 2.4, or Later

Drag and drop the Disk icon corresponding to your **T.sonic™ 310** into the trashcan. Then unplug your **T.sonic™ 310** from the USB port.

Troubleshooting

If an error occurs with your **T.sonic™ 310**, please first check the information listed below before taking your **T.sonic™ 310** for repair. If you are unable to remedy a problem from the following hints, please consult your dealer, service center, or local Transcend branch office. Transcend also provides an FAQ and Support service on our websites.

Driver CD cannot auto-run in Windows

Enter **Device Manager** in the **Control Panel** and enable the **Auto-Insert** function of the CD-ROM drive. Alternatively, you can manually execute the **t310.exe** from the driver CD.

Operating system cannot detect the T.sonic™ 310

Check the following:

1. Is your **T.sonic™ 310** properly connected to the USB port? If not, unplug it and plug it in again.
2. Is your **T.sonic™ 310** connected to the Mac keyboard? If yes, unplug it and plug it into an available USB port on your Mac Desktop instead.
3. Is the USB port enabled? If not, refer to the user's manual of your computer (or motherboard) to enable it.
4. Is the necessary driver installed? If your computer is equipped with Windows® 98SE, you must insert the Driver CD into the CD-ROM and refer to the "**Driver Installation for Windows 98SE**" section to complete the driver installation before using your **T.sonic™ 310**. A driver is not required for Windows® ME/2000/XP, Mac™ OS 10.0 or later, or Linux™ Kernel 2.4 or later.

Cannot power on

Check the following:

1. Is the **T.sonic™ 310** connected to your computer? If yes, unplug it.
2. Is the **LOCK** switch set to "**HOLD**"? If yes, set it to the "**OFF**" position.
3. Are the **Earphones** connected to the earphone jack? If not, plug them in.
4. Does the **T.sonic™ 310** have sufficient battery power? If not, recharge it.

Cannot download MP3, or WMA files to the T.sonic™ 310

As required, uninstall the driver and re-install it.

Buttons don't work

Check to see if the **LOCK** switch is set to "**HOLD**". If yes, set it to the "**OFF**" position.

Cannot hear track playback

Check the following:

1. Are there any MP3, or WMA files in the **root directory** of your **T.sonic™ 310**? If not, you must download music files from your computer or the Internet first (Only Mpeg I Layer 3 and WMA files compressed at a rate of 32Kbps–320Kbps are supported).
2. Are the earphones properly connected to the earphone jack? If not, connect them properly.
3. Is the volume loud enough? If not, adjust it by sliding up [**B to A**] on the TouchPad to increase the volume level.

Track playback sounds intermittent

Plug the earphones into the earphones jack again to make sure they are properly connected.

T.sonic™ 310 is NOT functioning correctly

If your **T.sonic™ 310** ever stops responding or locks up, you can simply unplug and re-plug in the earphones to reset the **T.sonic™ 310**.

Cannot find the file that was just copied to the T.sonic™ 310

Re-copy the file and refer to the "**Safely Remove Your T.sonic™ 310**" section to remove the **T.sonic™ 310** after the copy process is completed.

A File that was just deleted still appears

Re-delete the file and refer to the "**Safely Remove Your T.sonic™ 310**" section to remove the **T.sonic** after the delete process is completed.

The T.sonic™ 310 Utility cannot be executed



You must log in to the Windows OS with **Administrator** rights to execute the Utility.

Specifications

• Size:	85.5 mm × 23.8 mm × 12 mm
• Weight:	29g (with battery)
• Data Retention:	Up to 10 years
• Erase Cycles:	> 100,000 times
• Signal-to-Noise Ratio:	> 83dB
• Estimated Battery Life:	18 hours when fully charged
• Music Formats:	MP3 and WMA
• Compression Rates:	32Kbps–320Kbps
• Max Transfer Speeds:	Read 9 MB/sec, Write 8 MB/sec
• Certificates:	CE, FCC, BSMI

Ordering Information

Memory Size	Transcend P/N
512MB	TS512MMP310
1GB	TS1GMP310

T.sonic Limited Warranty

“Above and beyond” is the set standard for customer service at Transcend. We consistently position ourselves to be significantly above the industry norm, which is all part of our commitment to Customer Satisfaction.

All Transcend Information, Inc. (Transcend) products are warranted and tested to be free from defects in material and workmanship and to conform to the published specifications. During the warranty period, should your Transcend **T.sonic** fail under normal use in the recommended environment due to improper workmanship or materials, Transcend will repair or replace your product with a comparable product. This warranty is subject to the conditions and limitations set forth herein.

Duration of Warranty: The Transcend product warranty is valid for a specific period, which begins on the date of purchase. Proof of purchase including the date of purchase, is required to collect on the warranty. Transcend will inspect the product and decide whether to repair or replace it. Transcend reserves the right to provide a functional equivalent product or a refurbished replacement product.

Limitations: This warranty does not apply to product failure caused by accidents, abuse, mishandling, improper installation, alteration, acts of nature, improper usage, or problems with electrical power. In addition, opening or tampering with the product casing, or any physical damage, abuse or alteration to the product’s surface, including all warranty or quality stickers, product serial or electronic numbers will also void the product warranty. Transcend is not responsible for recovering any data lost due to the failure of a hard drive or flash memory device. Transcend’s **T.sonic** must be used with devices that conform to the recommended industry standards. Transcend will not be liable for damages resulting from a third party device that causes the Transcend product to fail. Transcend shall in no event be liable for any consequential, indirect, or incidental damages, lost profits, lost business investments, lost goodwill, or interference with business relationships as a result of lost data. Transcend is also not responsible for damage or failure of any third party equipment, even if Transcend has been advised of the possibility. This limitation does not apply to the extent that it is illegal or unenforceable under applicable law.

Disclaimer: The foregoing limited warranty is exclusive. There are no other warranties, including any implied warranty of merchantability or fitness for a particular purpose. This warranty is not affected in any part by Transcend providing technical support or advice.

Online Registration: To expedite the warranty service, please register your Transcend Product within 30 days of purchase.

Register online at <http://www.transcendusa.com/registration>

Transcend
Exceeding Your Expectations

Transcend Information, Inc.

www.transcendusa.com

*The Transcend logo is a registered trademark of Transcend Information, Inc.

*All logos and marks are trademarks of their respective companies.

Free Manuals Download Website

<http://myh66.com>

<http://usermanuals.us>

<http://www.somanuals.com>

<http://www.4manuals.cc>

<http://www.manual-lib.com>

<http://www.404manual.com>

<http://www.luxmanual.com>

<http://aubethermostatmanual.com>

Golf course search by state

<http://golfingnear.com>

Email search by domain

<http://emailbydomain.com>

Auto manuals search

<http://auto.somanuals.com>

TV manuals search

<http://tv.somanuals.com>