



AC2000 SIA Intruder Interface

Interface for Intruder Detection System Integration

FEATURES

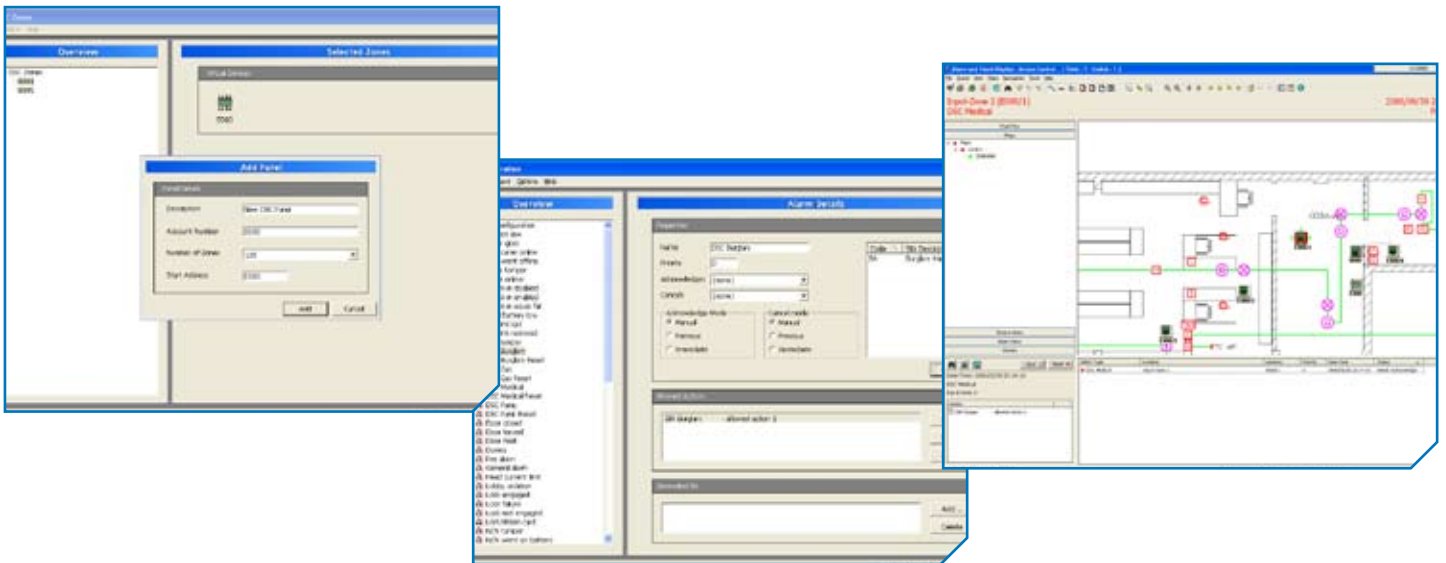
OVERVIEW

The SIA Intruder Interface with AC2000 SE enables alarms from intruder detection systems to be displayed using a single alarm display screen.

Intruder detection panels are added to AC2000 SE as separate devices with alarms generated by the panels forwarded to AC2000 SE over an Ethernet network using the SIA protocol. Each panel is added to the system in groups of 8 or 16 inputs using a user friendly application which simplifies the configuration of larger intruder panel systems by automatically creating and addressing entries in the AC2000 devices table thereby greatly reducing the amount of data the operator must enter.

Alarms from the intruder panels are sent to AC2000 SE where the SIA codes are extracted and mapped to AC2000 system alarms. These alarms are treated like all other alarms on the access control system where they can be sent to the AED (Alarm and Event Display) application for visual annunciation and acknowledgement. Alarms can also activate other systems, such as CCTV matrix, or be used to cause video images to be recorded on a compatible digital video management system (DVMS).

- Seamless integration with intruder detection systems
- Activated alarms shown instantly within AC2000 AED (Alarm and Event Display) module
- Alarm zone icons can be placed on to graphical maps in AED module alongside access control readers
- Simple configuration tool to create entire intruder detection systems within AC2000
- Displays up to 64 different alarms groups that can contain numerous SIA alarms
- Compatible with multiple Intruder detection systems

SOFTWARE HIGHLIGHTS


Ease of Configuration

A configuration application allows the simple creation of intruder panel devices within the AC2000 SE system. By giving the intruder panel a name, selecting the number of zones and stating the starting address, the module automatically populates the AC2000 Device table with the required number of individually addressed zones, each providing 8 or 16 inputs. This greatly reduces the amount of operator input required.

SIA Module

The SIA module with AC2000 SE accepts alarm information from any compatible intruder alarm panel conforming to the industry standard SIA protocol SIA DC-03-1990. Alarms generated by the intruder system are stored in the system database and can either be displayed on the AC2000 AED (Alarm Event Display) or forwarded on to a 3rd party systems, e.g. CCTV, via the External Systems Interface.

Alarm Displaying

Alarms displayed within AED can be acknowledged and cancelled from the CDC server like any other alarm from the access control system. Note: the SIA Interface will not acknowledge or cancel alarms at the intruder panel. This must still be done manually or via dedicated software.

External Systems

The AC2000 system is designed to link to other systems and applications when predefined alarm are activated. The External Systems application allows the user to specify the format of serial strings that are to be sent to a system connected to the main server (CDC).

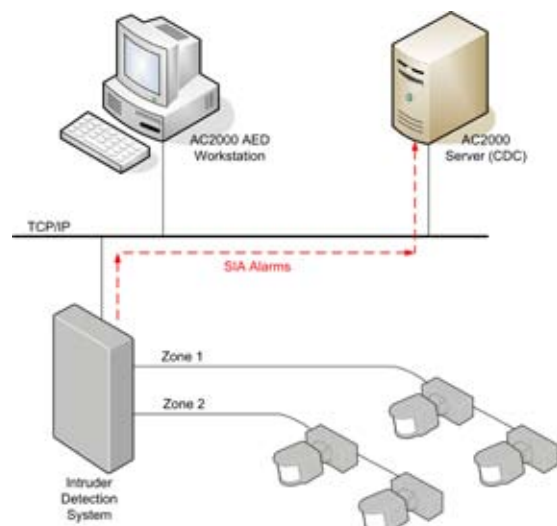
Intruder Panel Compatibility

DSC - PowerSeries Range
with T-Link Ethernet Communicator

DSC - Maxsys Range
with T-Link Ethernet Communicator

Honeywell - Galaxy *
with E080 Ethernet module

* Configuration of panels may vary depending on the Intruder Detection Systems and panel used.



Product specifications and availability is subject to change without notice. Certain product names mentioned herein may be trade names and/or registered trademarks of their companies.

Free Manuals Download Website

<http://myh66.com>

<http://usermanuals.us>

<http://www.somanuals.com>

<http://www.4manuals.cc>

<http://www.manual-lib.com>

<http://www.404manual.com>

<http://www.luxmanual.com>

<http://aubethermostatmanual.com>

Golf course search by state

<http://golfingnear.com>

Email search by domain

<http://emailbydomain.com>

Auto manuals search

<http://auto.somanuals.com>

TV manuals search

<http://tv.somanuals.com>