

Astra 3400/3450

Owner's Manual

Trademarks

UMAX is a trademark of UMAX Technologies, Inc. Astra is a trademark of UMAX Technologies, Inc. IBM PC/AT is a trademark of International Business Machines Corporation. MS-Windows, Windows, and MS-DOS are trademarks of Microsoft Corporation. PhotoDeluxe is a trademark of Adobe Systems, Inc. Presto! PageManager is a trademark of NewSoft Technology Corporation. Other names and trademarks appearing herein are trademarks of their respective holders.

TABLE OF CONTENTS

CHAPTER 1. GETTING STARTED.....	4
INTRODUCTION.....	4
UNPACKING THE SCANNER.....	4
<i>Package Contents.....</i>	<i>4</i>
GETTING TO KNOW YOUR SCANNER.....	4
SYSTEM REQUIREMENTS.....	5
INSTALLING THE SOFTWARE.....	6
<i>Installing Adobe PhotoDeluxe on the PC.....</i>	<i>6</i>
<i>Installing Adobe PhotoDeluxe on the Macintosh.....</i>	<i>6</i>
<i>Install VistaScan and Bundle Software (Presto! PageManager, Presto! PageType, OmniPage LE, and Online Manuals).....</i>	<i>6</i>
INSTALLING THE HARDWARE.....	7
<i>About Scanner Connectors.....</i>	<i>7</i>
<i>Setting Up – General Information.....</i>	<i>7</i>
<i>Connecting the Hardware Interface Cables.....</i>	<i>7</i>
CHAPTER 2. YOUR FIRST SCAN.....	10
SCANNING YOUR FIRST IMAGE WITH PHOTODELUXE.....	10
<i>Scanning an Image from the PC.....</i>	<i>10</i>
<i>Scanning an Image from the Macintosh.....</i>	<i>11</i>
TURNING THE SCANNER LAMP ON AND OFF.....	12
CHAPTER 3. SCANNING BASICS.....	13
SETTING VISTASCAN PREFERENCES.....	13
<i>General.....</i>	<i>13</i>
<i>Scan Destination.....</i>	<i>14</i>
<i>Scanner Information.....</i>	<i>16</i>
<i>VistaScan Beginner Window Features.....</i>	<i>16</i>
<i>VistaScan Advanced Features.....</i>	<i>19</i>
<i>Using VistaAccess – Direct Access.....</i>	<i>30</i>
<i>Using VistaShuttle.....</i>	<i>31</i>
<i>Using the UMAX Copy Utility.....</i>	<i>32</i>
CHAPTER 4. PUSH BUTTON SCANNING.....	34
<i>Configuring the Push Buttons.....</i>	<i>34</i>
<i>Intelligent Image Process Engine (IPE).....</i>	<i>35</i>
USING THE PUSH BUTTONS.....	39
CHAPTER 5. SCANNING PROJECTS.....	40
USING VISTASCAN TO SCAN A PHOTO TO E-MAIL.....	41
USING VISTASCAN WITH PHOTODELUXE TO CREATE WEB-READY IMAGES.....	41
USING PRESTO! PAGEMANAGER TO SCAN A FORM AND EDIT IT WITH PAGETYPE.....	44

CREATING A CALENDAR WITH PHOTODELUXE.....	45
CONVERTING SCANNED TEXT TO EDITABLE TEXT WITH OMNIPAGE.....	47
<i>Opening OmniPage LE.....</i>	47
<i>Converting Scanned Text with OmniPage LE.....</i>	48
CHAPTER 6. HOW TO GET HELP.....	50
USING ONLINE MANUALS.....	50
<i>Accessing the UMAX VistaScan Online Manual.....</i>	50
<i>Accessing the Adobe PhotoDeluxe Online Manual.....</i>	50
<i>Accessing the Presto! PageManager Online Manual.....</i>	51
<i>Accessing the Caere OmniPage Online Manual.....</i>	51
<i>Installing Acrobat Reader for Macintosh Users.....</i>	52
TROUBLESHOOTING.....	52
<i>General Problems and Solutions.....</i>	52
<i>Windows 98 Problems and Solutions.....</i>	52
<i>Macintosh Version Problems and Solutions.....</i>	54
CONTACTING TECHNICAL SUPPORT.....	55
MAINTENANCE.....	56
CLEANING.....	56
APPENDIX A. TECHNICAL SPECIFICATIONS.....	57
SCANNER SPECIFICATIONS.....	57

CHAPTER 1. Getting Started

Introduction

Thank you for purchasing the UMAX Astra 3400 / 3450 scanner. This versatile unit is perfect for the home or office. Use this scanner to add variety and flair to your documents, or to help you share images with others.

The Astra 3400 / 3450 scanner is equipped with a USB connector that allows you to make a fast and easy connection to the USB port on your PC, or USB-equipped Macintosh computer (such as the iMac, G3, or G4).

In addition to being easy to connect, this scanner is also easy to use. Simply follow the instructions in this guide and you'll be scanning in no time. With the powerful software included with your scanner, you can create an archive or scanned images, e-mail or fax images to friends or clients, or create your own web site gallery. Get ready to unleash your creativity with the UMAX Astra 3400 / 3450 scanner.

Unpacking the Scanner

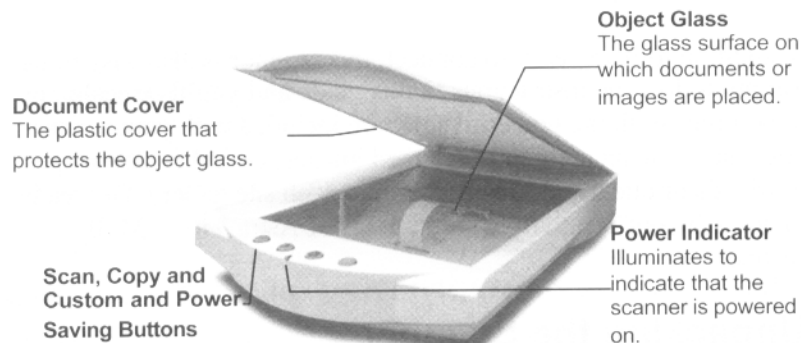
Your scanner package includes the cables and software you need to get the scanner up and running. The scanner package should contain all of the items listed below. If you do not find all of the listed items, contact the retailer from whom you purchased the scanner, or contact UMAX. For information about contacting UMAX directly, refer to Chapter 6. How to Find Help.

Package Contents

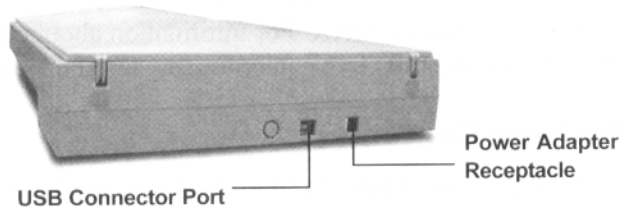
- UMAX Astra 3400 / 3450 Flatbed scanner (built-in Universal Transparency Cover included with the Astra 3450)
- USB Interface Cable
- Quick Install Guide and Owner's Manual
- Power Adapter
- Bundled Software CD-ROM
- Transparency Holder (included with Astra 3450)
- Astra Scanners CD-ROM. This CD-ROM contains UMAX scanner driver – VistaScan and other bundled software.

Getting to Know Your Scanner

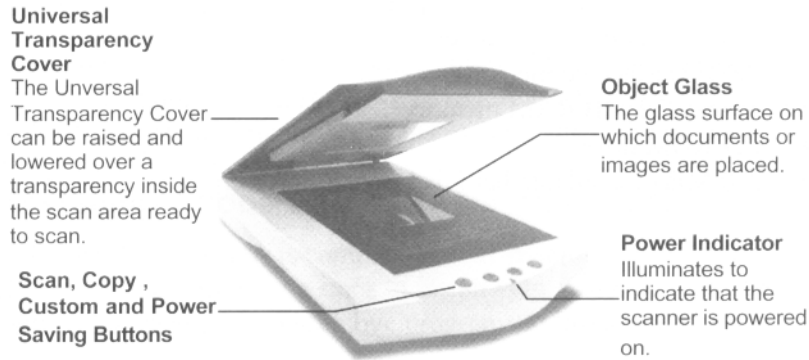
To gain a complete understanding of the information contained in this manual, it is important that you become familiar with your scanner. The graphics below identify the key scanner components.



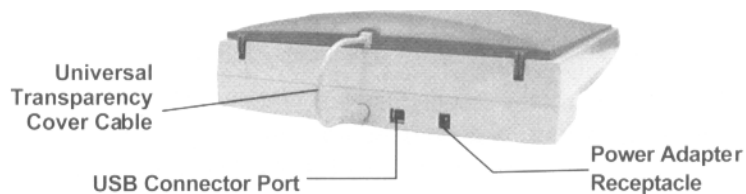
Astra 3400 Scanner Elements



Astra 3400 Back Panel



Astra 3450 Scanner Elements



Astra 3450 Back Panel

System Requirements

This section defines the minimum requirements necessary to operate either the Astra 3400 / 3450. Please refer to the section below that applies to your scanner and computer type.

PC Requirements

- An IBM-compatible PC with Pentium processor or higher
- Microsoft® Windows 98 / 2000
- USB interface connector
- At least 32 MB RAM memory
- CD-ROM drive
- 250 MB of available hard disk space

Macintosh Requirements

- iMac or G3 or G4 USB-compatible Macintosh
- Macintosh OS 8.0 or higher
- USB interface connector
- At least 32 MB RAM memory
- CD-ROM drive
- 250 MB of available hard disk space

Installing the Software

The PhotoDeluxe installation procedure is different for Macintosh and PC computers. Therefore, we have provided two separate sets of instructions. Follow the set of instructions for your computer.

Installing Adobe PhotoDeluxe on the PC

NOTE: PhotoDeluxe is compatible with Windows 98, 95 and higher. Use the following steps to install your scanning software rather than using the add/remove programs to install the software.

1. Insert the CD-ROM labeled “PhotoDeluxe” into your computer’s CD-ROM drive. Your computer should automatically read the disk and display a series of screens regarding product licensing. Follow the onscreen instructions.

NOTE: If a window does not appear automatically, double-click the My Computer icon to open it, double-click the PhotoDeluxe CD-ROM icon to open it.

2. A Licensing Agreement window appears. Enter the country where you are currently located in and click **Next**.
3. Read the licensing agreement and then click **Accept**.
4. A PhotoDeluxe Install window appears. Click the **Install** button. Follow the onscreen instructions.
5. When you get to the Setup Type window, choose **Typical**.
6. Fill in the user information.
7. Click **Next** in the Start Copying Files window to begin installing PhotoDeluxe, Adobe Acrobat Reader, and Adobe ATM. Follow the onscreen instructions.
8. After Adobe Acrobat Reader has been installed, a ReadMe file appears. When you have read the ReadMe, select **Exit** from the File menu.
9. The Adobe Type Manager window appears, click the **Install** button. Follow the onscreen instructions.
10. When the Adobe Product Registration window appears, enter the relevant information and continue following the onscreen instructions.
11. When a screen appears asking if you want to restart your computer to finish the installation procedure, select **Yes** and click the **OK** button.

NOTE: To access these files you must click the “Start” bar, select “Programs”, and then select “Adobe”. A cascading file appears with “ReadMe” information and other selections to choose from. For information about setting up desktop shortcuts, refer to your Microsoft Windows documentation.

Install VistaScan and Bundle Software (Presto! PageManager, Presto! PageType, OmniPage LE, and Online Manuals)

1. Insert the Astra Scanners CD into your computer’s CD-ROM drive after you have finished installing the software on the PhotoDeluxe CD.

FOR PC USERS: If a window does not appear automatically, double-click the My Computer icon to open it, double-click the Astra Scanners CD-ROM icon to open it (please be aware the Astra Scanners CD is labeled “VistaScan” in the Windows desktop/directory).

FOR MACINTOSH USERS: When the UMAX VistaScan window opens on your desktop, double-click on the UMAX CD Installer icon to begin the software installation.

2. Follow the onscreen instructions to complete the installation of Presto! PageManager, UMAX VistaScan, OmniPage LE, and the online User's Guide.
3. Restart your computer as suggested by the onscreen instructions to complete the installation.

Installing the Hardware

After you have removed the scanner from the box and verified that all of the package contents have been included, please check to make sure that your computer is compatible with the scanner's connectors.

About Scanner Connectors

USB Connectors

Many newer computers, both PC and Macintosh, rely on USB technology as the primary method of communication between the computer and its peripherals. With this new USB "plug-and-play" technology your computer automatically configures peripherals. If your computer has a USB port, you must make sure that this port is enabled in the system BIOS. Please refer to the troubleshooting section to learn more about enabling the USB Port.

Checking Your Computer's Connectors

To use your scanner you need to understand what type of connectors you have on your computer. To determine the connector type, look at the back panel of your computer.



- A USB port is a small slot ½" long and ¼" wide.

NOTE: If your computer has a USB port, check to make sure that your computer's operating system supports USB. The following factory-installed operating systems support USB: Microsoft Windows 98 or higher, and Mac OS 8.1 or higher.

Setting Up – General Information

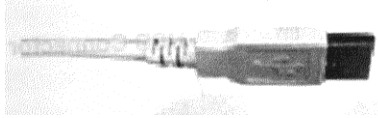
Find a suitable location near your computer to place the scanner.

CAUTION: Make sure the surface is flat. Operating your scanner on an uneven surface can damage the internal components.

Connecting the Hardware Interface Cables

If your computer has a USB port, follow the instructions in the *Connecting the USB Cable* section to connect the scanner to your computer.

Make sure your computer is turned off before proceeding.



Connecting the USB Cable

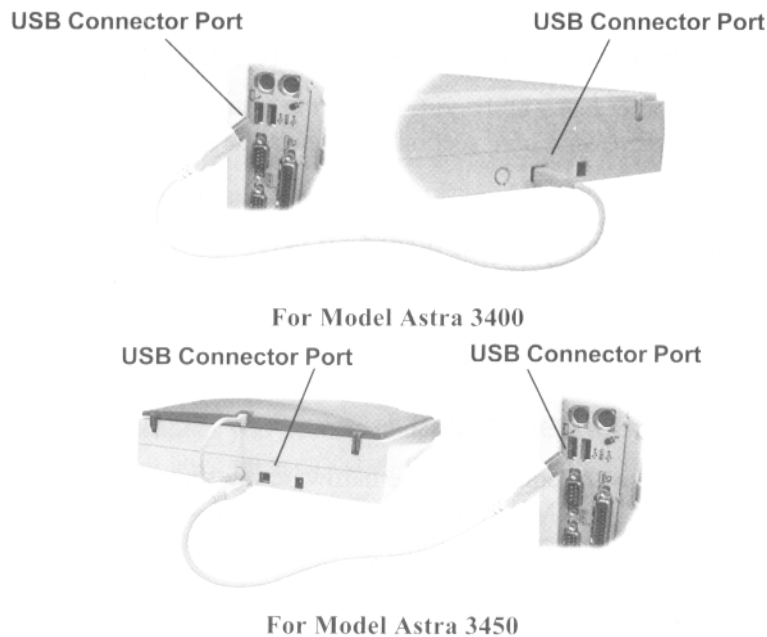
The instructions for connecting the hardware interface cable are different for PC and Macintosh users. Refer to the section below that applies to your computer type.

PC Connection

1. Locate the USB cable that is provided. Plug the wide end of the cable firmly into one of the available USB ports on your computer.
2. Plug the small end of the cable into the port marked “USB” located on the back panel of the scanner.

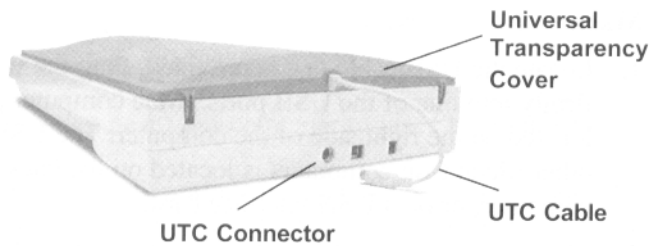
Macintosh Users

1. Locate the USB cable that is provided. Plug the wide end of it firmly into one of the USB ports. IMac computer ports are located on the right side of the computer. The USB port on other Macintosh computers is located on the back panel of the computer, or on a USB interface.
2. Plug the small end of the cable into the port marked “USB” located on the back panel of the scanner.



Connecting the UTC (Universal Transparency Cover) Cable on the Astra 3450 only

1. Locate the UTC cable, which is attached to the back end of the UTC cover.

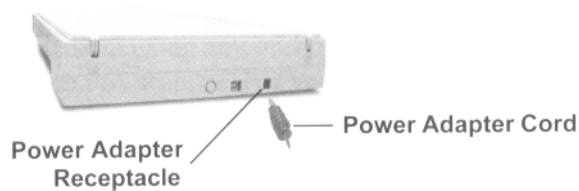


For Model Astra 3450

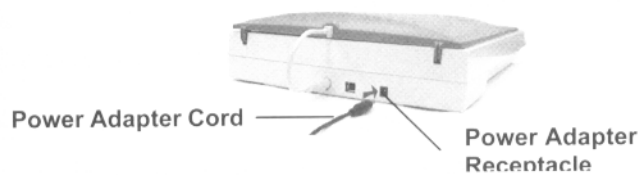
2. Plug the UTC cable into the connector marked “OPTION” on the back panel of the scanner. Please be sure the small triangular arrow on the plug is facing toward the top of the scanner.

Connecting the Power Adapter

1. Plug the scanner’s power cord into an electrical outlet.



For Model Astra 3400



For Model Astra 3450

2. Insert the other end of this cord into the power adapter receptacle marked “POWER” on the back panel of the scanner. The power indicator on the front panel of the scanner should now be illuminated.
3. Restart your computer to recognize the scanner.

CHAPTER 2. Your First Scan

Before you begin your first scan, you must install the scanner and the bundled software. Refer to the *Quick Install Guide* for installation.

You can perform a basic scan using any of the software applications bundled with this scanner. For your first scan, we suggest using the PhotoDeluxe software.

PCs and Macintosh have two different versions of the PhotoDeluxe software, so we have included two separate sets of instructions. Please follow the proper set of instructions for your system.

Scanning Your First Image With PhotoDeluxe

Open the PhotoDeluxe software application.

Scanning an Image from the PC

1. Click the **Start** bar in the bottom-left corner of the screen.
2. Click **Programs**.
3. Select **Adobe**.
4. Select PhotoDeluxe Home Edition 3.0
5. Click Adobe PhotoDeluxe Home Edition 3.0
6. The PhotoDeluxe screen appears with the Seasonal Activities option present. Initially, we recommend you bypass this section. To bypass this section, click **Install** and then click **Cancel**.
7. Click the **Get & Fix Photo** tab. A row of icons appears.
8. Click the **Get Photo** icon. A drop-down list appears. Click the **Scanners...** option. A tabbed bar appears at the top of the screen. Click the **Scanner** tab.
9. Click the **Choose Scanner** icon. Click on the **VistaScan** entry in the input source list. The **VistaScan** input source is highlighted. Click **OK**. (**NOTE:** You only need to do this one time.) Click the **Mode** tab. Click the **Custom** icon. The VistaScan window opens. VistaScan software controls the various functions of the scanner and provides a communication path between the scanner and the PhotoDeluxe software.
10. Click the **Custom** icon.
11. Select an item you would like to scan (a picture, a drawing, etc.).
12. Lift the document cover and place the item to be scanned face-down so the top center of the document aligns with the arrow at the back edge of the object glass.
13. Click the **Preview** button on the right side of the VistaScan Beginner window. The scanner begins a low-resolution scan of the item.
14. When the preview scan is complete the preview image is displayed in the Preview window (on the left side of the VistaScan window).

You can change the view of the Preview image using the “Zoom Tool”, or select a scanning region using the “Frame Selection Tool”. To find out more about how to use these tools, click on the user tips text that appears when your cursor pauses over the tool.

NOTE: You must have a browser installed in order to view the VistaScan online help.

15. In the **Click to Scan** section of the VistaScan Beginner window, click the icon that corresponds to the type of image you are scanning.

For example, if you are scanning a color photograph, choose “Color Photo”. To scan text or a black and white drawing, choose “Text/Lineart”. The image is scanned and you return to the PhotoDeluxe window.

NOTE: Choosing an icon in the “Click to Scan” area does two things: it activates the scanner, and automatically sets the scanner settings. This ensures you get the best scanning results for the item you are scanning.

16. A pop-up message appears on the right side of the screen indicating that you should click the **Done** tab.
17. Click the **Done** tab. A **Save as** window opens. Enter a file name for the scanned image. Indicate which folder or directory you want to save the image file to, and specify in what file format you want to save the image.

NOTE: If you do not assign a file name, the computer automatically assigns a name that consists of the date, and a two-digit reference number.

18. Enter the graphic title of the image that will appear in the My Photos window.
19. Click on the **Save & Send** icon. Choose save from the drop-down menu. Click the Save button to save the image.
20. Close the VistaScan window by clicking **Exit**.

Scanning an Image from the Macintosh

1. Double-click the **Hard Drive** icon.
2. Double-click the **Adobe PhotoDeluxe 2.0** folder.
3. Double-click the **Adobe PhotoDeluxe** application icon to launch PhotoDeluxe. The PhotoDeluxe screen appears.
4. Click the **Get Photo** button.
5. Click the **Get Photo** tab.
6. Click the **Scanner** button to display a menu of available input sources. Click on the **UMAX VistaScan** entry in the input source list. The **UMAX VistaScan** input source is highlighted. Click **OK**. The VistaScan Beginner window appears.

NOTE: You only need to select the device driver once in PhotoDeluxe. It will remember your selection the next time you use the application.

7. Select an item you would like to scan (a picture, a brochure, etc.).

8. Lift the document cover and place the item face-down so the top center of the image aligns with the arrow at the back edge of the object glass.
9. Click the **Preview** button on the right side of the VistaScan Beginner window and the scanner begins a low-resolution scan.
10. When the preview scan is complete the preview image is displayed in the Preview window (on the left side of the VistaScan window).

You can change the view size of the Preview image before scanning the final image using the “Zoom Tool”, or select a region to scan using the “Frame Selection Tool”. To find out more about how to use these tools, click on the user tips text that appears when your cursor pauses over the tool.

NOTE: You must have a browser installed in order to view the VistaScan online help.

11. In the **Click to Scan** section of the VistaScan Beginner window, click the icon that corresponds to the type of image you are scanning.

For example, if you are scanning a color photograph, choose “Color Photo”. To scan text or a black and white drawing, choose “Text/Lineart”. The image is scanned and you return to the PhotoDeluxe window.

12. When the scan is complete, a window appears requesting that you save the document. Type a name in the field that appears to the right of “Save this document as:”

NOTE: By default the image is saved as “untitled - #” in the **Acquire** section of the floating gallery window. You can also choose to save the image in the hard drive or on the desktop by clicking on the arrow to the right of the My Photos box at the top of this window.

13. After a moment the image appears in the My Photos gallery window. Double-click the thumbnail to view a full-size, high-resolution scan of the image in the work area.

14. Exit PhotoDeluxe by selecting **Quit** from the File menu.

Turning the Scanner Lamp On and Off

You can turn the scanner lamp on and off using the Astra 3400 / 3450’s built-in Power Saving utility from VistaAccess. The lamp remains on whenever the scanner has power, unless you turn it off using the UMAX Power Saving utility. Turning off the scanner lamp when you are not scanning prolongs the life of the lamp.

To turn the scanner lamp off:

Click the icon of VistaAccess and select the Lamp On/Off control function. You can click the Lamp Off item to turn off your scanner lamp.

To turn the scanner lamp on:

Open the VistaScan software, or simply click the Lamp On item from the Lamp On/Off control function in the VistaAccess.

NOTE: The scanner lamp is different from the Power Indicator light. The Power Indicator light is the very small, green light located on the front panel of the scanner. This indicator remains ON whenever the scanner is plugged into an electrical outlet (regardless of whether the Power Saving utility is engaged).

CHAPTER 3. Scanning Basics

VistaScan is the primary program or driver you use to scan with your Astra 3400 / 3450 scanner. It is a TWAIN-compliant program, which means that it can be run from other programs that support scanning, like PhotoDeluxe, OmniPage, and others. It is also a stand-alone program, which allows you to scan images for a variety of uses, even without launching another program first.

Setting VistaScan Preferences

Preferences control scanner settings that you generally do not modify every time you use the scanner. The Preference settings are used as the default settings for several of the scan settings.

To access the VistaScan Preferences, click the **Preferences** icon in the upper right corner of the VistaScan window.

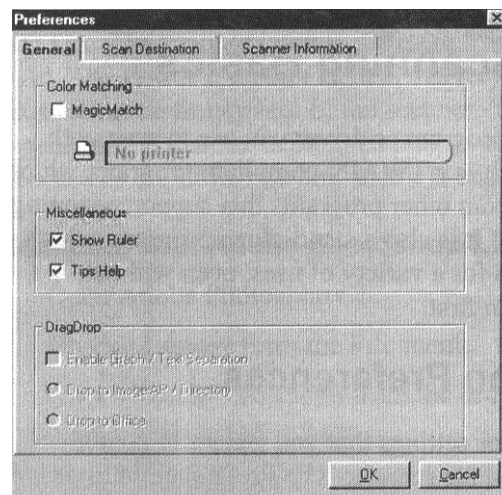
The Preferences cover three areas:

- General
- Scan Destination
- Scanner Information

A tab at the top of the Preferences window indicates each VistaScan preference group. To view the Preference settings for an area, click on the associated tab.

General

The General tab contains preference settings that control color matching and color correction, and whether to display the ruler and tips.



Color Matching/Correction

Color Matching allows you to fine-tune the colors of scanned images so that they emulate the colors of your original source documents as closely as possible. This is accomplished using MagicMatch.

When you click on the MagicMatch checkbox (so a checkmark appears) the Profile List displays. A profile is a list of applicable calibration profiles, which MagicMatch uses to render a final output image. If a printer or calibration profile is not chosen, MagicMatch will calibrate the image to optimize its display on a monitor.

MagicMatch only functions when you are scanning in color mode. When you are using MagicMatch, it automatically disables the Level/Curve and Color Adjustment/Balance settings in the VistaScan Advanced window.

Show Ruler

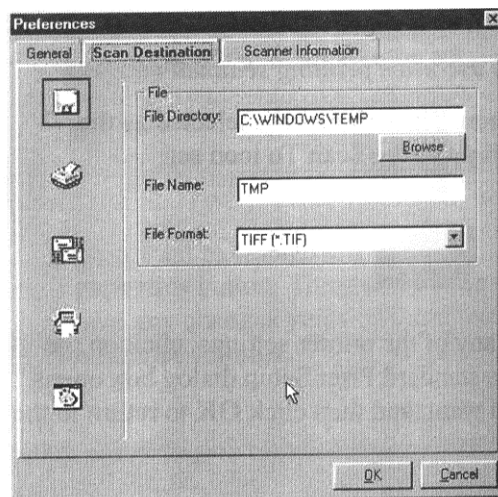
The Show Ruler command displays or hides the rulers that border the top and left sides of the Preview window. These rulers correspond to the rulers on your scanner's object glass. Clicking on the **Show Ruler** checkbox turns off (removes the checkmark) and hides the ruler. Clicking on the checkbox again turns the feature on (displays a checkmark) and shows the ruler.

Tips Help

The Tips Help option determines whether tips are displayed when you pause with your cursor over a VistaScan option. Click on the **Tips Help** box to enable tips (displays a checkmark). When a checkmark appears, clicking the checkbox disables the tips and removes the checkmark.

Scan Destination

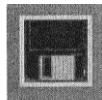
The options in this Preferences tab specify how scanned images are stored, printed, faxed, transferred to another application, or transmitted via e-mail.



File

To set the location for your stored images:

1. Click on the **File** icon. The file preferences appear to the right of the Scan To icon set.



2. Enter the directory in which you want to store the scanned image file, in the File Directory text box. If you are not sure of the directory path, click the **Browse** button to locate the desired directory.

3. Enter the file name under which you want to store the scanned image files (such as TMP) in the **File Name** text box.
4. Select the file format in which you want to save scanned images from the **File Format** drop down list.

Printer

To specify which printer to use when printing scanned images:

1. Click on the **Printer** icon. The printer driver currently selected as the default appears to the right of the Scan To icon set.



2. If you want to change any of the printer settings, click on the **Properties** button. The standard Print Setup dialog box opens. Make any changes you want, and then click **OK** to return to the Preference settings.

E-mail

To specify which e-mail application to use when you e-mail scanned images:

1. Click on the **E-mail** icon. The e-mail preferences appear to the right of the Scan To icon set.



2. Click on the button next to the e-mail software you are using (Microsoft Exchange or Lotus cc:Mail).
3. Select the image format you want to use when you attach scanned images to your email application from the **Image Format** drop down list.

Fax

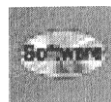
1. Click on the **Fax** icon. The fax driver (or printer if a fax driver is not selected) currently selected as the default appears to the right of the Scan To icon set.



2. If you want to change any of the settings, click on the **Properties** button. The standard Print Setup dialog box opens. Make any changes you want, and then, click **OK** to return to the Preference settings.

Application

1. Click on the **Application** icon. The application preferences appear to the right of the Scan To icon set.

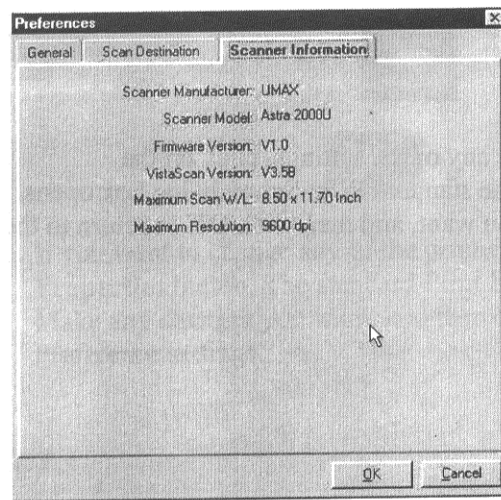


2. Enter the application name to which you want to send the scanned image files (such as Presto! PageManager) in the **Application Name** text box.

3. Enter the file name of the application executable in the **File Name** text box. If you are not sure of the directory path, click the **Browse** button to locate the correct path.
4. Select the image format in which you want to save scanned images from the **Image Format** drop down list.

Scanner Information

The Scanner Information tab displays important information about your scanner.

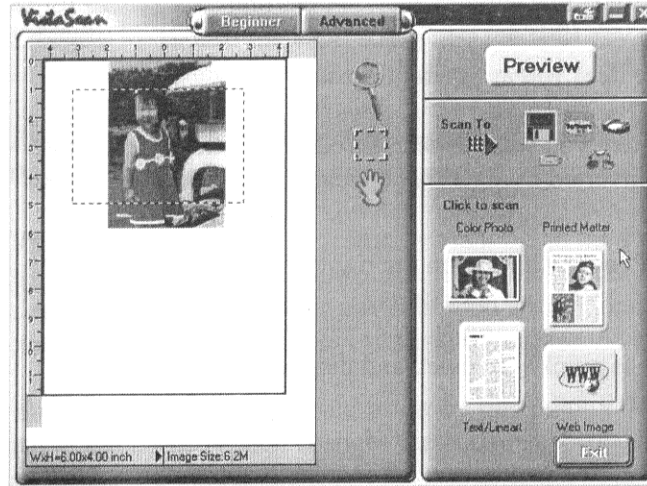


The information includes:

- Scanner Manufacturer
- Scanner Model
- Firmware Version
- VistaScan Version
- Maximum Scan Width and Length
- Maximum Resolution

VistaScan Beginner Window Features

The VistaScan Beginner window appears when you launch VistaScan. The features of the VistaScan Beginner window let you scan a wide variety of documents, photos, and graphics. Just click a button.



Scanning an item via the Beginner window consists of just a few steps:

1. Perform a preview scan of the item to be scanned by clicking the **Preview** button. The item is quickly scanned at low-resolution, and is displayed in the Preview window (on the left side of the VistaScan Beginner window).
2. Select what you want to do with the image after it is scanned using the Scan To icons.
3. Specify what kind of image you are going to scan, and start the final scan process using the Click To Scan icons.

Performing the Preview Scan

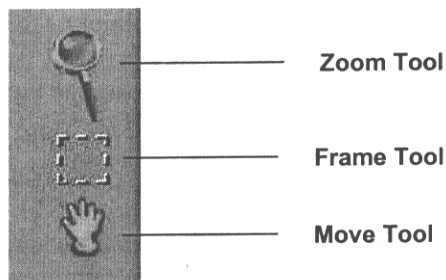
The Preview feature lets you scan an item at low-resolution so you can define the specific area to be scanned when you scan at higher resolution.

To preview the item you are going to scan:

1. Place the item you want to scan face-down on the object glass, under the inverted triangle that appears in the center of the rear ruler.
2. Click the **Preview** button on the right side of the Beginner window.

The image is quickly scanned and displayed in the Preview window.

There are three Preview tools in the VistaScan Beginner window.



Zoom Tool – Lets you enlarge or reduce the view of the image in the Preview window. To use the Zoom tool:

Once the preview image appears in the Preview window, click on the **Magnifying Glass** icon. Move your cursor into the Preview window and click. The image enlarges. To reduce the view size, press the shift key (the command key on the Macintosh) and click the Preview window.

Frame Tool – Lets you select the portion of the image displayed in the Preview window you want scanned in the final scan step.

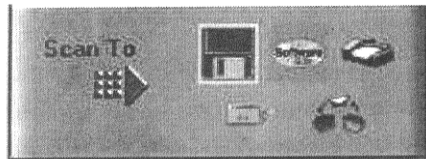
You can size the selection frame by clicking on the **Frame** tool and placing your cursor over one of the four edges of the frame (which changes the cursor shape to a two-headed arrow), drag the Frame inward to reduce the size, or outward to increase the size.

You can also move a selected frame by positioning the cursor inside the frame (which changes the cursor shape to a four-direction arrow), and dragging the frame to another location in the Preview window.

Move Tool – Lets you move an image in the Preview window so you can see portions that are not visible because the image is zoomed too large to display completely. Click on the **Move** tool. Put the cursor inside the Preview window (which changes the cursor shape to a hand). Scroll the image view by clicking and dragging the cursor.

Selecting the Scan to Device or Application

To specify the device or application to which you want to send the scanned item, click on the icon that represents this device or application.



The icons include:

File – stores the scanned image in a file using the file name specified in the VistaScan Preferences.

Print – prints the scanned item on the default printer.

Fax – faxes the scanned item using your fax driver.

Application – sends the scanned item to the applications specified in the VistaScan Preferences.

E-mail – sends the scanned item as a graphic file to your Microsoft Exchange or Lotus cc:Mail application. (**NOTE:** Other e-mail applications are not supported.)

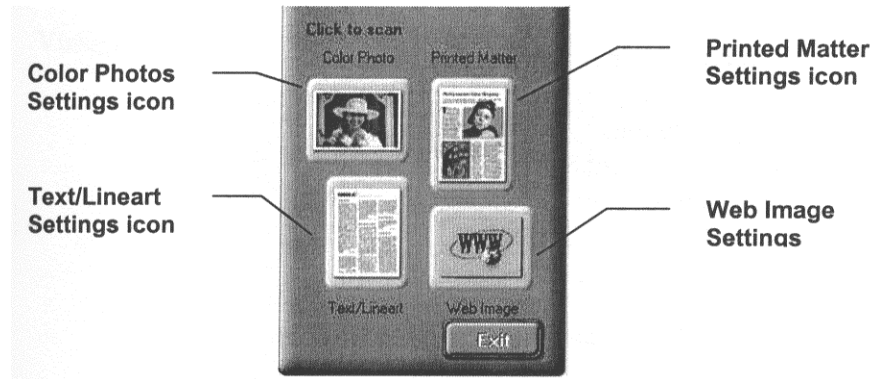
Defining the Type of Image to Scan

The Beginner window provides pre-defined scanning options so you can quickly and easily scan any of the following items:

- **Color Photos** – use this setting when you want to scan color or black and white photos
- **Printed Matter** – use this setting when you want to scan something that has been printed like a brochure, magazine, etc.

- Text/Lineart documents – use this setting when you want to scan the text contained in a document, or when you want to scan simple lineart graphics.
- Web Images – use this setting when you want to scan graphics and then use them on the web.

To specify the type of image you are going to scan, click on the icon that represents the type of item you want to scan.



Clicking on any of these icons automatically starts the final scan process using the pre-defined scan settings. The scanned image is saved or sent to the device or application you specified by clicking on the Scan To icon.

VistaScan Advanced Features

The VistaScan Advanced window gives you the ability to adjust the scan setting individually so you can customize the settings for the type of document you are going to scan. If you are a novice computer user, you may want to use the VistaScan Beginner window until you are more familiar with VistaScan and the scanning process. The Beginner window options are preset to provide a quick and easy way to scan images.

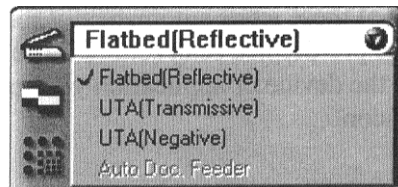
If you are an experienced computer user with some scanning experience, you can use the features contained in the Advanced window to optimize the scan process for the specific item you are going to scan.

The Advanced window contains the following tools and features you can use to scan documents:

- Original Document Source Settings
- Image Mode Settings
- Resolution Settings
- Descreen Settings
- Filter Settings
- Scaling Options
- Auto Adjustment Setting
- Scan Control Unit
- Multiple Scan Mode Settings
- Color Adjustment Feature Panel

Changing the Original Document Source

The Original Document Source setting identifies the item you want to scan.



You can choose from the following settings:

Flatbed Reflective: Scans paper originals (non-transparencies) e.g., photographs, documents, and brochures.

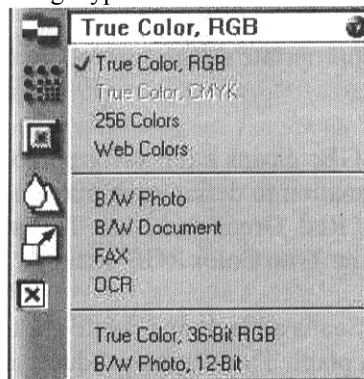
UTA (Transmissive): (Astra 3450 only) Scans transparent objects through which light can pass (e.g., 35mm slides). Optimum quality is achieved by making sure your Frame (see Frame Tool p.18) does not extend beyond the image area of the transparent material.

UTA (Negative): (Astra 3450 only) Scans photographic negatives or films. Optimum quality is achieved by changing the Image Mode (see below) to “True Color, 42-Bit RGB” and making sure your Frame (See Frame Tool p.18) does not extend beyond the image area of the film negative.

Automatic Document Feeder: The Automatic Document Feeder option is not available with the Astra 3400 or 3450 scanners.

Changing the Image Mode

VistaScan can scan a wide variety of image types.



True Color, RGB: Scans a full color photo or document. The RGB indicates the colors of Red, Green, and Blue. This setting creates larger files than the B/W Photo setting.

True Color, CMYK: Converts RGB (video) color data into CMYK (printed) color data using a special color transformation process. When scanning is completed the CMYK image is ready for printing on a CMYK color printer.

NOTE: Most ink jet printers use RGB rather than CMYK printing.

256 Colors: Scans color images using 256 colors. The 256 color images take up less memory and hard disk space than the True Color RGB option.

Web Photo: Scans an image at the appropriate resolution for display on the monitor.

B/W Photo: Scans black-and-white photos using 256 shades of gray (ranging from white to black) so you get smooth shade transitions in your scanned image.

B/W Document: Scans text documents, black-and-white line art, and other black-and-white documents. This selection creates the smallest files.

Fax: Scans at the appropriate resolution for faxing.

OCR: Scans at the appropriate settings for optimal OCR recognition.

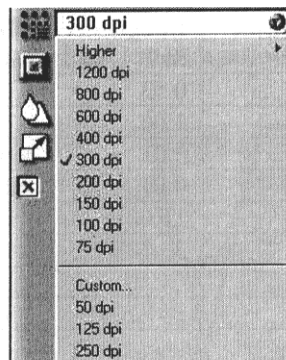
True Color 42-Bit RGB: Scans a full-color photo or document using 42-bits of information to define each pixel. The RGB indicates the colors of Red, Green, and Blue. This setting creates larger files than the True Color RGB setting.

B/W Photo, 14-Bit: Scans a black-and-white photo using 14-bits of data to define each pixel. This setting produces more gray shade accuracy than the B/W Photo option, but also produces larger file sizes.

NOTE: Not all graphic applications support higher than 24-bit graphic files. To determine whether the software you want to use is capable of working with higher than 24-bit graphics, refer to your software documentation.

Changing the Resolution Setting

Scanning resolution is measured in dots per inch (DPI). Resolution determines the amount of information the scanner will capture in a scanned image. The higher the resolution, the finer the image detail and the larger the file sizes.



VistaScan lets you choose from the following settings:

- Higher – this option opens a drop down menu that contains higher resolution settings which include 9600, 8400, 7200, 6000, 4800, 3600, 2400, 1800, and 1600 dpi selections.
- 1200
- 800
- 600
- 400
- 300
- 200
- 150
- 100
- 75
- Custom

The table below gives you an idea of the file sizes you can expect based on the original image size and the resolution setting you specify. These values are based on scanning images in 24-bit, True Color RGB mode. Image sizes shown below are given in megabytes.

Table 1. Resolution/File-Size Guidelines

Resolution (dots per inch)	Image Size 4x5	Image Size 5x7	Image Size 8.5x11
72	0.30	0.53	1.39
100	0.58	1.00	2.68
200	2.29	4.01	10.70
300	5.15	9.01	24.10
400	9.16	16.00	42.80
600	20.60	36.10	96.30
800	36.60	64.10	171.20
1200	82.40	144.20	385.20

NOTE: Choosing the True Color RGB 42-bit setting captures more data than the 24-bit setting. This means that the file sizes listed above will be larger if you scanned images using the True Color 42-bit RGB setting.

Choosing the Best Resolution for Your Scanning Project

To choose the best resolution for scanning, determine what you are going to do with the image once it is scanned. Matching your scanning resolution to the image use will give you the best image for that purpose and will keep the file sizes to the minimum needed.

Table 2. Recommended Resolutions

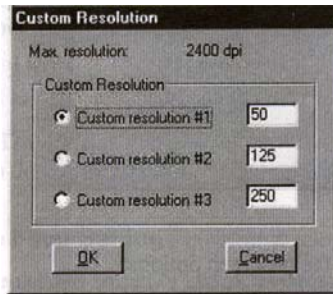
Image Use	Recommended Resolution
Printing	300 - 600*
Viewing on the Screen	72
Viewing on the Web	72
OCR, B/W	300
Pre-Press	600
Enlarging or Reducing	600

*Depending on the resolution of your printer

Using Custom Resolution Settings

You can also specify custom resolution settings that you can use when you scan. The maximum custom resolution setting you can define is 2400 dpi. To define the custom resolution settings:

1. Choose the Custom... option from the Resolution drop down menu. The Custom Resolution window opens.



2. Enter the desired resolution setting (between 50 and 2400 dpi) in the Custom resolution #1 box.
3. Repeat step 2 to define the Custom resolution #2 and Custom resolution #3 settings.
4. Click OK. The settings you defined appear on the Resolution setting drop down menu, under the Custom heading.

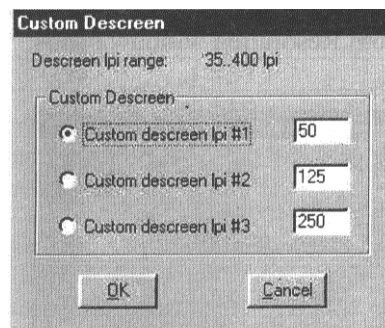
Changing the Descreen Feature

The Descreen option helps eliminate the patterns that can appear when you scan printed images found in magazines, brochures, catalogues, etc. This is accomplished by changing the number of lines that appear in every inch (lines per inch) of the scanned image.

The Descreen feature is unavailable when you have chosen the B/W Document, Fax, or OCR resolution settings.

To change the Descreen setting:

1. Click the Descreen option to display the drop down menu.



2. Choose one of the Descreen options:

No Descreen – No Descreening

Magazine – Specifies 133 lines per inch. This option smooths the fine dot pattern found in glossy magazines.

Newspaper – Specifies 85 lines per inch. Smooths the course grain pattern commonly found in newspaper images.

Art Print – Specifies 175 lines per inch. Smooths the fine dot pattern found in high quality art prints.

Custom – Opens the Custom Descreen window, which allows you to specify a custom line screen value. Refer to the *Using Custom Descreen Settings* section for information about how to set custom descreen values.

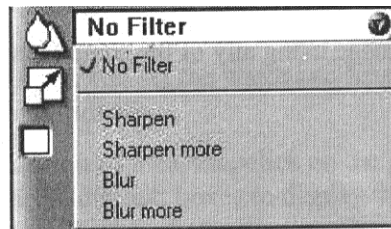
Using Custom Descreen Settings

You can also specify custom descreen settings that you can use when you want to change the lines per inch setting to eliminate patterns that are generated while scanning printed images. You can enter custom settings that range from 35 to 400 lines per inch. To define the custom descreen settings:

1. Choose the Custom... option from the Descreen drop down menu. The Custom Descreen window opens.
2. Enter the desired lines per inch setting (between 35 and 400 lpi) in the Custom descreen lpi #1 text box.
3. Repeat step 2 to define the Custom descreen #2 and Custom descreen #3 settings.
4. Click OK. The settings you defined appear on the Descreen setting drop down menu, under the Custom heading.

Changing the Filter Setting

Image filters are used to soften or sharpen edges and boundaries of an image.



VistaScan provides the following filter options:

No Filter – Use this option when you do not want to sharpen or blur the image.

Sharpen – Use this option to sharpen lines that may be fuzzy or not clean in the original image.

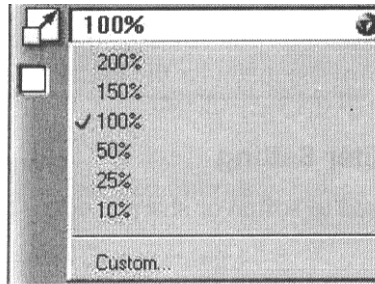
Sharpen More – Use this option when you want to sharpen the image more than the standard Sharpen filter does.

Blur – Use this option when you want to soften the edges of an image.

Blur More – use this option when you want to soften the edges more than the Blur filter does.

Changing the Scan Factor

Scaling lets you automatically enlarge or reduce an image from its original size (100%) as it is scanned. The scale factor affects the size of the scanned image and the printed scan output.



You can scale the image using any of the scale factors listed below:

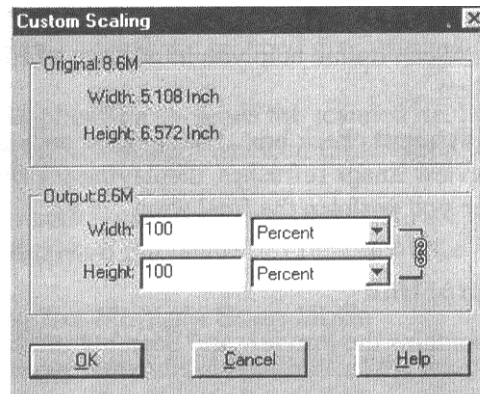
- 200%
- 150%
- 100%
- 50%
- 25%
- 10%
- Custom

You can also specify a custom scale factor by choosing the Custom option from the Scaling drop down menu. See the *Using Custom Scaling Settings* section for more information about specifying a custom scale factor.

Using Custom Scale Settings

You can specify custom scaling settings to use when you scan. To define the custom scaling settings:

1. Choose the Custom... option from the Scaling drop down menu. The Custom Scaling window opens.



2. Enter the desired scale factor in either the width or Height text box. When locked, width and height entries are identical. The width and height fields are dynamic, updating one field automatically changes the other field. If the scale output size is unlocked, you can set the width and height output dimensions individually.
3. To change the unit of measure, click on the down arrow next to Height and/or Width text boxes to display the possible settings. You can choose from Inch, Centimeter, Pixel, or Percent.
4. Click OK.

Using the Auto Adjustment Feature

Auto Adjustment provides a simple way to adjust the light and dark values of a color or grayscale image you want to scan.

To automatically adjust the light and dark values:

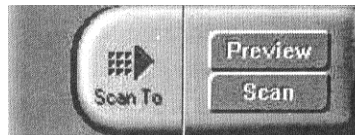
1. Place the item you want to scan on the scanner object glass.
2. Click the **Preview** button from the VistaScan Advanced window.
3. Select an area that you want to adjust using the **Frame** tool.

You can edit the **Preview image** before scanning the final image using the “Zoom Tool” and the “Frame Selection Tool”. To find out more about how to use these tools, click on the user tips text that appears when your cursor pauses over the tool.

NOTE: To use VistaScan online help you must have a browser installed on the system.

4. Click the **Auto Adjustment** check box. The selected area is adjusted and the preview image refreshes, displaying the results you can expect when you perform the final scan.

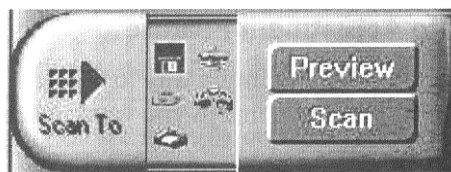
Using the Scan Control Unit



Selecting the Scan to Device or Application

To specify the device or application to which you want to send the scanned item:

1. Click on the arrow above the Scan To text on the Scan Control unit. The Scan Control unit panel slides back to display the Scan To icons.



Click on the icon that represents the device or application to which you want to send the scanned item. The icons include:

File – stores the scanned image in a file using the file name specified in the VistaScan Preferences.

Print – prints the scanned item on the default printer.

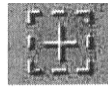
Fax – faxes the scanned item using your fax driver.

Application – sends the scanned item to the applications specified in the VistaScan Preferences.

E-mail – sends the scanned item as a graphic file to your Microsoft Exchange or Lotus cc:Mail e-mail application.

Using the Multiple Scan Mode

You can select multiple portions of the image you scanned in Preview mode using the Multiple Frame tool.



The Multiple Frame tool allows you to create two or more selection frames in the Preview Window.

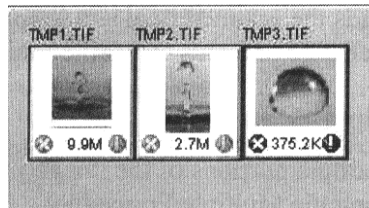
To create more than one selection frame:

1. After you have scanned an image in Preview scan mode, click on the **Multiple Frame** tool.
2. Select the area you want contained in the first frame by clicking on the point at which you want to begin the frame, and then dragging the tool diagonally until the area of interest is contained in the marquis box.
3. Click outside of a selected area to save the frame. To create other frames, repeat steps 1 and 2 until you have created all the desired frames.
4. After you create a frame, the Single Frame tool is automatically selected so you can resize or move the frame you just created.

To select one of the frames you created, double-click on the desired frame. The frame border of the active frame changes to a marquis style frame (dotted lines). Once a frame is selected, double-click on a frame to display the Job Information window for that image, which contains the image information.

To remove a selected frame:

1. Click on the **Job List** button. Thumbnails of the selected frames appear in the job list window.



2. Click on the thumbnail of the frame you want to remove. A red box appears around the selected thumbnail. The frame in the Preview window associated with the thumbnail, changes to a dashed outline.
3. Click on the “X” button, located in the bottom-left corner of the thumbnail, to remove the frame.

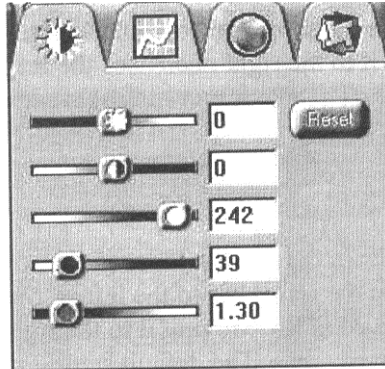
Using the Color Adjustment Features

The Color Adjustment features allow you to make adjustments to the colors and/or tones in an image. The following lists the color adjustment settings you can modify:

- Brightness, contrast, highlights, shadows, and gamma
- Image tones
- Color balance
- Rotation/Invert

Adjusting Image Brightness, Contrast, Highlights, and Shadows

When you click on the Brightness/Contrast tab from the Color Adjustment panel a series of slide bars appear. Adjust the associated tones by dragging the slider in one of the bars to the left or right.



Using the Brightness Bar

This setting determines the overall intensity level (gray level) of an image. Moving the slider on the scroll bar to the right increases the brightness. Moving it to the left decreases the brightness. The default setting is zero 0. The maximum brightness setting is 100, the minimum setting is -100.

Using the Contrast Bar

This setting controls the difference between light and dark areas in an image. Moving the slider on the scroll bar to the right increases the gray shades between light and dark areas. Moving it to the left decreases gray shades between light and dark areas. The default setting is zero 0. The maximum contrast setting is 100, the minimum setting is -100.

Highlight Bar

This setting defines the lightest (whitest) tones in the scanned image. If you broaden the range that includes the highlight points, the pixels within the newly specified range will be remapped allowing you to see more details in a color/gray image.

Moving the slider on the scroll bar to the left increases the brightness. Moving it to the right decreases the brightness. The default setting is 255. The maximum highlight setting is 255; the minimum is 1 (which is white).

Shadow Bar

The Shadow bar defines the darkest tones in the scanned image. Moving the slider on the scroll bar to the left increases the brightness in shadowed areas. Moving it to the right decreases the brightness in shadowed areas. The default setting is 0. The maximum shadow setting is 254 (which is black), the minimum setting is 0.

Gamma Bar

The Gamma bar alters the mid-range gray tones in the scanned image. All optical devices, such as monitors and scanners, have some variance in their light sensitivity characteristics. To get a scanned image with good results, VistaScan provides gamma adjustment capabilities so you can compensate for this variance in your scanner.

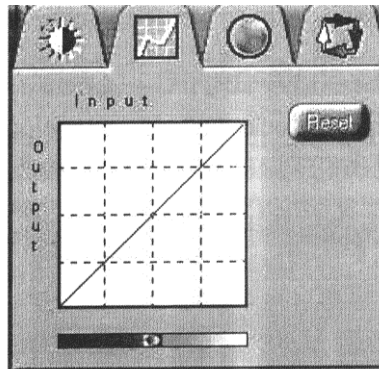
Moving the slider on the scroll bar to the right increases the brightness of the mid-range gray tones. Moving it to the left decreases the brightness of the mid-range gray tones. The default setting is 1.2.

Reset Button

Click the **Reset** button to cancel the changes and return the value to the default setting.

Adjusting the Image Tones

The Curve command is another way to make precise adjustments in the highlight, midtones, or shadow levels in your images. Using this feature corrects the gray/color values in an image. You change the values by altering the shape of the curve that represents the brightness values of pixels.

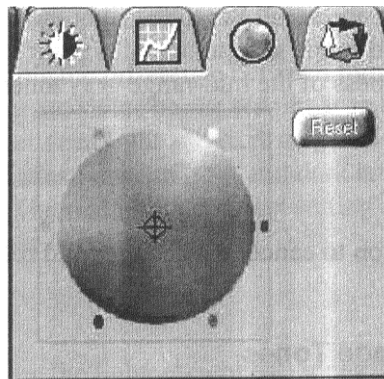


Click Reset to cancel the changes and return the value to the default setting.

Adjusting the Color Balance

The Color Adjustment feature controls the hue and saturation of a particular color.

When you click on the Color Balance tab from the Color Adjustments panel, a continuous color spectrum wheel appears.

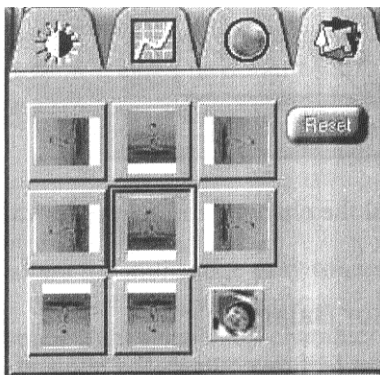


When you click in the wheel the image tones are shifted to the particular hue that is represented in that area.

Click the **Reset** button to cancel the changes and return the value to default setting.

Rotating/Inverting an Image

You can rotate an image clockwise or counter clockwise, and you can flip image 180 degrees vertically or horizontally.



The following lists the possible rotate and flip selections:

- Flip/Rotate Horizontally – flips the image horizontally and rotates it 90 degrees counter clockwise.
- Flip Horizontal – flips the image horizontally.
- Rotate 90 CCW – rotates the image 90 degrees counter clockwise.
- Rotate 90 CW – rotates the image 90 degrees clockwise.
- Normal – does not rotate or flip the image.
- Flip Vertical – flips the image vertically.
- Rotate 180 – rotates the image 180 degrees clockwise.
- Inverts an Image – changes all the dark tones in an image to light tones, and all the light tones to dark tones. This option can NOT be reversed using the Edit menu Undo command.

Clicking on the image that shows the desired orientation rotates or flips the image. Clicking the Reset button cancels the rotate or flip action and returns the image to the original orientation.

Using VistaAccess – Direct Access

VistaAccess is a utility that provides instant access to several VistaScan applications. VistaAccess loads at startup, and can be found in the system tray. When VistaAccess is open, it allows you to open any of the listed applications with a few clicks of your mouse.

To use VistaAccess from the PC:

1. Click on the **Start** bar. Click on the **Programs** option. When the Programs pop-up menu appears, click the **VistaScan** option. The VistaScan pop-up menu appears. Click the **VistaAccess** option to display the scanner icon in the Windows Task bar (near the time display in the lower right corner of the window in the system tray).
2. Click the scanner icon in the system tray using your right mouse button. A pop-up menu appears with contains:
 - VistaScan
 - VistaShuttle
 - Copy Utility
 - Scanner Test
 - Push Button Configuration
 - Lamp On/Off Control
 - Find/Refresh Scanner
 - Exit
3. Click on one of the listed applications or utilities to launch the software.

4. Click the **Find/Refresh Scanner** option to re-initialize the scanner. Click the **Help** option to view VistaAccess online help. Click the **Exit** option to remove the scanner icon from the Windows Task bar and close VistaAccess.

To use VistaAccess from the Macintosh:

1. VistaAccess loads at startup. Click on the **Finder** in the upper right corner of the Desktop. A drop-down menu appears which contains:
 - VistaScan
 - Push Button Configuration
 - Lamp On/Off Control
 - Find/Refresh Scanner
2. Click on one of the listed applications or utilities to launch the software.
3. Click the **Find/Refresh Scanner** option to re-initialize the scanner. Click the **Help** option to view VistaAccess online help. Click the **Exit** option to remove the scanner icon from the Finder area and close VistaAccess.

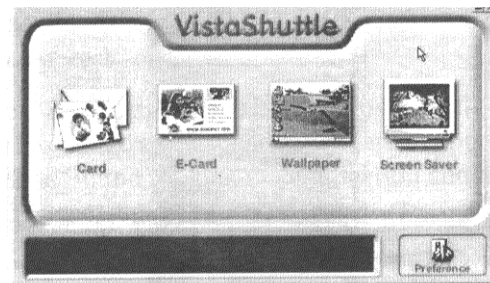
Using VistaShuttle

VistaShuttle is a PC-based application that provides an easy way for you to create greeting cards, wallpaper for your computer desktop, a screen saver for your computer, e-cards (e-mail greeting card), and more.

NOTE: VistaShuttle is not compatible with Macintosh.

To use VistaShuttle to create an E-Card (electronic greeting card you send via e-mail):

1. Click the scanner icon in the system tray (to the far right of the Windows task bar) using your right mouse button. Select the VistaShuttle application from the VistaAccess menu. The VistaShuttle Main window appears.



2. Click on the E-Card icon. The VistaScan Beginner window opens so you can scan an item to include in your electronic greeting card.
3. Lift the scanner's document cover and place your document face-down in the center of the scanner's object glass.
4. Click **Preview** to preview the scanned item. You can edit the Preview image before scanning the final image using the "Zoom Tool" and the "Frame Selection Tool". To find out more about how to use these tools, click on the user tips text that appears when your cursor pauses over the tool.

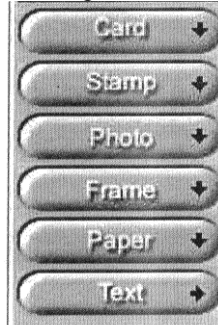
NOTE: You must have a browser installed in order to view the VistaScan online help.

5. Click the icon that most closely represents the item you are going to scan in the Click To Scan area of the VistaScan Beginner window.

The item is scanned, and VistaScan automatically closes. After a moment the VistaShuttle E-Card window appears with the scanned item in the default E-Card template.

6. Click on the scanned item to display the image handles. Drag one of the image handles outward to enlarge the image, or inward to reduce the image.

You can customize the E-Card template frame that surrounds the scanned item, the stamp graphic or the paper type by clicking the desired option from the buttons in the left column.



7. Click and drag any of the E-Card template elements to move them around, creating your own E-Card style.
8. Choose the Add text command from the Text menu (or click on the Text button from the left-hand column). The Text Setting window opens.
9. Enter the E-Card greeting text in the text box.
10. You can modify the font type, font size, font style (bold, italic, underlined), text alignment (left, right, or centered), and text color by selecting an option from the drop-down lists or by clicking on the associated icon from the button bar at the tip of the E-Card window.
11. Click the **Finish** button to place the text on the card.



12. Click the **Close** button in the upper right corner to close the Text Setting window. You can move the text box around the E-Card until you find the right spot. Click outside the text box to anchor the text to the chosen spot.
13. Click the Mail button from the E-Card window. The Send dialog box appears.
14. Choose your e-mail application from those listed (only Microsoft Exchange and Lotus cc:Mail are supported), and click the Send button to open the application and attach your E-Card to the message.
15. Send your e-mail message.

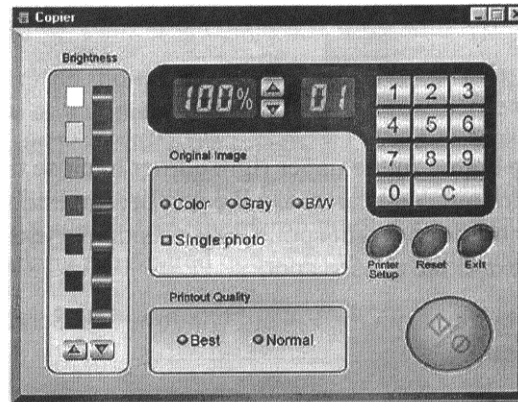
Using the UMAX Copy Utility

The UMAX Copy utility is a PC-based application that lets you scan and automatically print copies of an image.

NOTE: The UMAX Copy Utility is not Macintosh compatible.

To use the copy utility:

1. Click on the **Start** bar. Click the **Programs** option. When the Programs pop-up menu appears, click the **VistaScan** option. The VistaScan pop-up menu appears. Click the UMAX Copy Utility selection to open the program.
2. The UMAX Copy Utility window appears.



3. Select your copy settings. Click the **Copy** button to make the copies, then click Exit when you are finished.

UMAX Copy Utility Features

Brightness: Lets you select the brightness levels to use when you print the copies of the scanned image. If the image is too dark, click the up arrow to lighten the copy. If the image is too light, click the down arrow to darken the copy.

Original Image: Lets you specify the type of image to be copied – Color, Gray, or B/W. The Single Photo option automatically crops unnecessary white space around the image (no matter where the image is placed), reducing memory storage space and speeding up the scanning.

Printout Quality: Choose Normal or draft quality, or choose Best for high quality images.

- **B/W images** – Selecting Best or Normal produces the same output.
- **Gray images** – Selecting Best uses an enhanced filter to improve image quality but slows down the print speed.
- **Color images** – Selecting Normal uses an enhanced filter to improve color quality; selecting Best uses the MagicMatch function to produce the best image quality.

Printer Setup – Opens the Printer Setup dialog box.

Reset – Returns any settings you have modified to the default settings.

Exit – Returns you to the desktop window.

Numeric Buttons – Lets you specify the number of copies by clicking on the desired number. The number appears to the left.

Scaling – Sets the printout size of your scanned image; the default is 100%.

Copy/Stop – Copy your scanned image by clicking the **Copy** button. When copying begins, the button text changes to read Stop. To stop printing copies, click the **Stop** button.

CHAPTER 4. Push Button Scanning

The defining feature of the Astra 3400 / 3450 is its push button functionality. You can scan an image to e-mail, perform OCR (optical character recognition), or even use the scanner as a copy machine by pushing one of the three buttons on the front panel of the scanner.

You can increase your productivity by accessing all of the normal scanner functions without having to launch the software applications through the onscreen interface.

Before you can use these time-saving functions, you need to configure the settings for each button. Follow the appropriate set of instructions below to configure the variables for each button.

Configuring the Push Buttons

To access the configuration utility for the push buttons, follow the appropriate instructions below:

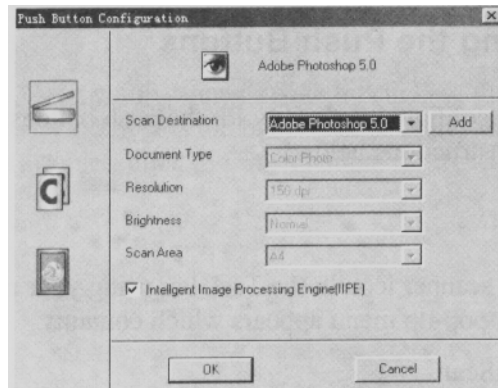
For PC Users:

1. Click the scanner icon in the Task bar using your right mouse button. A pop-up menu appears which contains:
 - VistaScan
 - VistaShuttle
 - Copy Utility
 - Scanner Test
 - Push Button Configuration
 - Lamp On/Off Control
 - Find/Refresh Scanner
 - Exit
2. Click the **Push Button Configuration** option.

For Macintosh Users:

1. Click on the **Finder** in the upper right corner of the Desktop. A drop-down menu appears which contains:
 - Hide VistaAccess
 - Hide Others
 - Show All
 - Finder
 - VistaAccess
2. Click on the **Push Button Configuration** option.

The Push Button Configuration window appears.



NOTE: There are three icons in the Push Button Configuration window. Each icon represents a separate scanner button function. Clicking on the icon displays a window with variables.

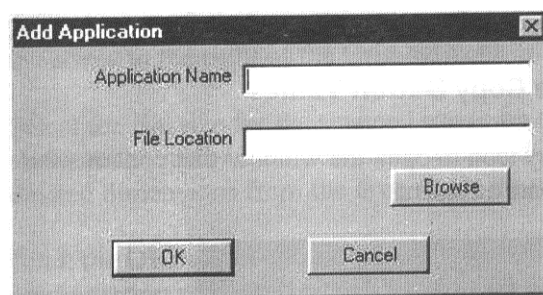
Intelligent Image Process Engine (IPE)

Intelligent Image Process Engine (IPE) automatically determines the document type, brightness, and optimum resolution for scanning your image on the Astra 3400. The Astra 3450, with its transparency cover, does not support IPE. When the Intelligent Image Process Engine (IPE) box is checked, IPE is activated and access to the document type, resolution, brightness, and image size settings are disabled. To gain access to the scanner settings, the Intelligent Image Process Engine (IPE) should not be checked.

Configuring the Scanner Button Values

1. When the Push Button Configuration utility opens, the scanner settings are automatically displayed. Select the image editing software you want to scan to when you press the Scan push button, by clicking on the arrow to the right of the **Scan Destination** field. A list of available applications appears. Choose one of the available applications from the drop-down menu.
2. If the application you want to scan to is not shown in the Scan Destination drop-down list, click the Add button (to the right of the scan Destination drop-down list). The Add Application window opens. Enter the application name in the Application Name text box. Enter the path and the executable file name for the application you want to use in the File Location text box.

If you are not sure of the path or the exact executable name, click the **Browse** button to locate the appropriate file.



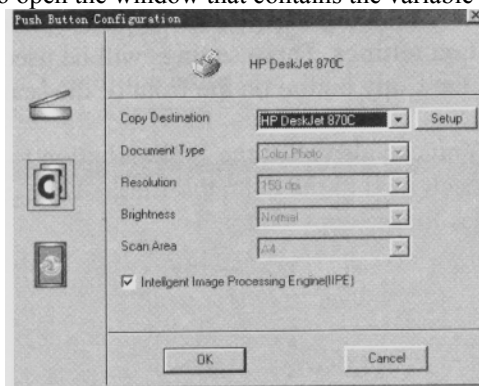
3. Click OK to return to the Push Button Configuration window. Select the application you added to the Scan Destination drop-down list.
4. Select the type of image you are scanning by clicking on the arrow to the right of the Document Type field and choosing one of the available document types from the drop-down menu.

5. Select the desired resolution by clicking on the arrow to the right of the Resolution field and choosing one of the resets from the drop-down menu.
6. Select a scanning intensity level (brightness) by clicking on the arrow to the right of the Brightness field and choosing the desired brightness level from the drop-down menu.
7. Indicates the type of material the original image is printed on. Select either Reflective or Transmissive by clicking the arrow to the right of the Original Field.
8. Select the size of the original image by clicking on the arrow to the right of the Scan Area field.
9. Click the **OK** button to save the Scan push button configuration settings. These settings will be used whenever you press the Scan button on the front of the scanner.

NOTE: You can also click the Default button to return the values in each field to the default settings. Then click **OK**.

Configuring the Copy Button Values

1. Click the **Copy** icon to open the window that contains the variable you are adjusting.

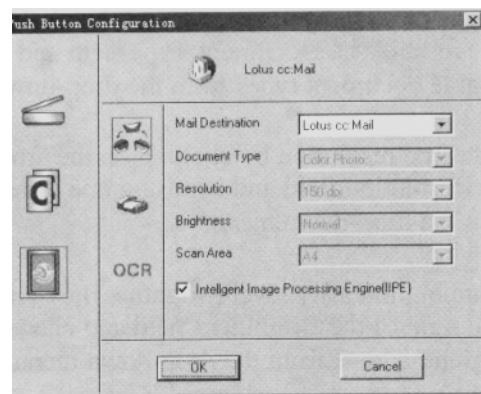


2. Select the printer driver you want to use to print the copies, by clicking on the arrow to the right of the Copy Destination field. Choose one on the available printers that is connected to your computer from the drop-down menu.
3. Select the type of image you are scanning by clicking on the arrow to the right of the Document Type field and choosing one of the available document types from the drop-down menu.
4. Select the desired resolution by clicking on the arrow to the right of the Resolution field and choosing one of the resolution presets from the drop-down menu.
5. Select a scanning intensity level (brightness) by clicking on the arrow to the right of the Brightness field and choosing the desired brightness level from the drop-down menu.
6. Original indicates the type of material the original image is printed on. Select either Reflective or Transmissive by clicking the arrow to the right of the Original field.
7. Select the file size for the scanned image by clicking on the arrow to the right of the Scan Area field and choosing the desired dimensions from the drop-down menu.
8. Click the **OK** button to save the Copy push button configuration settings. These settings will be used whenever you press the Copy button on the front of the scanner.

NOTE: You can also click the Default button to return the values in each field to the default settings. Then click **OK** to save these values for the copy button.

Configuring the Custom Button Values

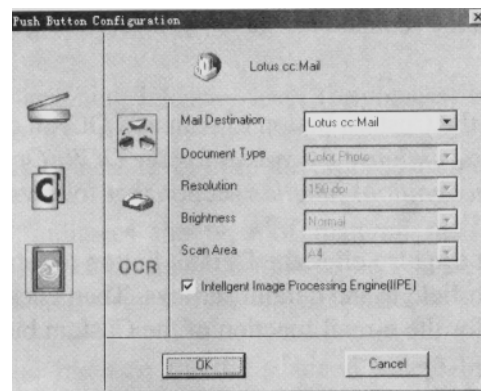
1. Click on the **Custom** icon to open the window that contains the variables you are adjusting.



NOTE: The Custom icon controls the values for both the E-mail and FAX and OCR (optical character recognition) features. You configure the variables for each function separately.

To configure the values for the e-mail function:

1. If the E-mail icon is not selected (enclosed in a red box), click the **E-mail** icon.



2. Select the e-mail application (only Netscape and Eudora and Lotus cc:Mail are supported) to send the scanned image to, by clicking on the arrow to the right of the Mail Destination field.
3. Select the type of image you are scanning by clicking on the arrow to the right of the Document Type field and choosing one of the available document types from the drop-down menu.
4. Select the desired resolution by clicking on the arrow to the right of the Resolution field and choosing one of the presets from the drop-down menu.
5. Select a scanning intensity level (brightness) by clicking on the arrow to the right of the Brightness field and choosing the desired brightness level from the drop-down menu.
6. Original indicates the type of material the original image is printed on. Select either Reflective or Transmissive by clicking the arrow to the right of the Original field.
7. Select the file size for the scanned image by clicking on the arrow to the right of the Scan Area field and choosing the desired dimensions from the drop-down menu.

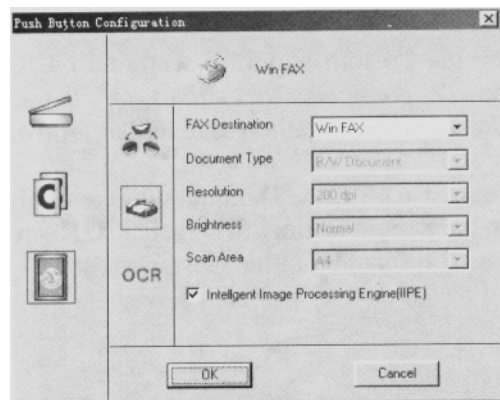
8. Click the **OK** button to save the Custom E-mail push button configuration settings. The Custom setting is now configured to scan and send the scanned image to the selected e-mail application.

To configure the Custom button to scan and OCR a document, refer to the *To configure the values for the OCR (Optical Character Recognition) function* section that follows.

NOTE: You can also click the Default button to return the values in each field to the default settings. Then click **OK** to save these values for the e-mail function of the Custom button.

To configure the values for the FAX function:

1. If the FAX icon is not selected (enclosed in a red box), click the **FAX** icon.



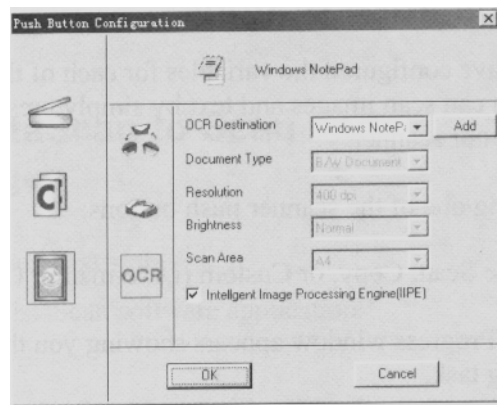
2. Select the FAX driver to send the scanned image to, by clicking on the arrow to the right of the FAX Destination field.
3. Select the type of image you are scanning by clicking on the arrow to the right of the Document Type field and choosing one of the available document types from the drop-down menu.
4. Select the desired resolution by clicking on the arrow to the right of the Resolution field and choosing one of the resolution presets from the drop-down menu.
5. Select a scanning intensity level (brightness) by clicking on the arrow to the right of the Brightness field and choosing the desired brightness level from the drop-down menu.
6. Original indicates the type of material the original image is printed on. Select either Reflective or Transmissive by clicking on the arrow to the right of the Original field.
7. Select the file size for the scanned image by clicking on the arrow to the right of the Scan Area field and choosing the desired dimensions from the drop-down menu.
8. Click the **OK** button to save the Custom FAX push button configuration settings. The Custom setting is now configured to scan and send the scanned image to the selected e-mail application.

To configure the Custom button to scan and OCR a document, refer to the *To configure the values for the OCR (Optical Character Recognition) function* section that follows.

NOTE: You can also click the Default button to return the values in each field to the default settings. Then click **OK** to save these values for the e-mail function of the Custom button.

To configure the values for the OCR (optical character recognition) function:

1. If the OCR icon is not selected (enclosed in a red box), click the OCR icon.



2. Select the text editing application to use by clicking on the arrow to the right of the OCR Destination field. Choose an application from the drop-down menu.
3. NOTE: You do not need to select values for Document Type, Resolution, Brightness, nor for Scan Area.
4. Original indicates the type of material the original image is printed on. Select either Reflective or Transmissive by clicking the arrow to the right of the Original field.
5. Click the **OK** button to save the Custom OCR push button configuration settings. The Custom setting is now configured to scan, OCR, and then send the editable text to the selected OCR Destination application.
6. To configure the Custom button to scan and e-mail a document, refer to the *To configure the values for the e-mail function* section above.

NOTE: You can also click the Default button to return the values in each field to the default settings. Then click **OK** to save these values for the OCR function of the Custom button.

Using the Push Buttons

Once you have configured the variables for each of the push buttons, you can scan images and text by simply pressing one of the buttons on your scanner.

To scan using one of the scanner push buttons:

1. Press the Scan, Copy, or Custom (i.e. e-mail or OCR) button.
2. A Scan Progress window appears showing you the status of the scanning task.
3. When the scan is complete, the image you scanned appears in the application you specified when you configured the button.

CHAPTER 5. SCANNING PROJECTS

The UMAX Astra 3400 / 3450 scanner includes bundled software to help you with a variety of tasks. This chapter shows you how to make a personalized calendar, create Web-ready images, and even turn a page of text into an online text document that you can edit.

Using VistaScan to Scan and Print Images

To perform your first scan:

1. Open the VistaScan software application.

For PC Users:

- a) Click on the **Start** bar. Click on the **Programs** option. When the Programs pop-up menu appears, click the **VistaScan** option. The VistaScan pop-up menu appears. Click the **VistaAccess** option to display the scanner icon in the Windows Task bar (near the time display in the lower right corner of the window in the system tray).
- b) Click the scanner icon in the Task bar using your right mouse button. A pop-up menu appears.
- c) Click on VistaScan to launch the software.

Or you can also:

- a) Click on the **Start** bar in the bottom-left corner of the screen.
- b) Click **Programs**.
- c) Click **VistaScan**.
- d) Click **VistaScan**.

For Macintosh Users:

- a) Click on the **Scanner icon** in the upper right corner of the Desktop (near the Finder). A pop-up menu appears.
- b) Click on **VistaScan** to launch the software.

Or you can also:

- a) Double-click the **Hard Drive** icon.
- b) Double-click the **UMAX VistaScan** folder.
- c) Double-click the **UMAX VistaScan** application icon to launch VistaScan.

2. The VistaScan Beginner window appears. Lift the scanner's document cover and place your document face-down in the center of the scanner's object glass.

3. Click the **Preview** button to preview the scanned item. You can edit the Preview image before scanning the final image using the "Zoom Tool" and the "Frame Selection Tool". To find out more about how to use these tools, click on the user tips text that appears when your cursor pauses over the tool.

NOTE: This feature is only available if you have a browser installed.

4. Click the **Printer** icon in the "Scan to" control panel to indicate that you want to scan and print the image.
5. Click one of the four icons in the **Click to Scan** area of the VistaScan Beginner window. Your selection identifies the type of image you are about to scan and tells VistaScan how to set the scanner

options for the best results. The image type selections include: Color photos, Text/lineart, Web Images, and Printed Matter settings.

Once you click on the desired image type, the scanner starts scanning the image using the appropriate settings.

For Macintosh Users:

After the scan is complete, a print window appears. Verify that the destination settings are correct and then click the **Print** button.

6. When the scan is complete, the image is printed on your printer.

Using VistaScan to Scan a Photo to E-mail

Scanning an image to email is similar to the procedure described in the *Using VistaScan to Scan and Print Images* section earlier in this guide. Follow steps 1 through 3 as listed in the Scan and Print instructions, then proceed with the following steps:

1. Click on the **E-mail** icon to set the scanner settings to the best values for scanning the image to e-mail.

NOTE: You may need to adjust the destination preferences in the VistaScan Beginner window. For information about setting preferences, refer to *Setting the VistaScan Preferences* section.

2. Click on the **Web Image** icon in the **Click to Scan** area of the VistaScan Beginner window. The scanner starts scanning the image using the appropriate settings for web images.
3. After the image is scanned, a Microsoft Exchange or Lotus cc:Mail e-mail window appears with an icon representing the scanned image embedded in the message area of the window.

NOTE: For more information about using Microsoft Exchange or Lotus cc:Mail refer to the user documentation that came with the application.

4. Fill out the rest of the standard e-mail information (address, subject, etc.) as you ordinarily would. Send the e-mail.

Using VistaScan with PhotoDeluxe to Create Web-ready Images

You can add flair to your Web pages by importing scanned photos.

The version of PhotoDeluxe is different for PC and Macintosh users. Follow the appropriate set of instructions based on the type of system you are using.

For PC Users:

1. Open the PhotoDeluxe application. For detailed instructions on how to start PhotoDeluxe, refer to steps 1-5 from *Chapter 2. Your First Scan*.
2. The PhotoDeluxe screen appears. Click on the Get & Fix Photo tab in the upper-left corner, and then select the Get Photo button.



The Get Photo drop-down menu appears.



3. Click the **Scanners...** option. The VistaScan software opens displaying the Beginner window.
4. Select an image you want to post on a web site (i.e., a picture, a postcard, etc.).
5. Lift the document cover and place the item face-down in the center of the object glass of the scanner.
6. Click the **Preview** button. The scanner begins a low-resolution scan of the image. The preview image displays in the Preview window.
7. Click the **Web Image** icon in the **Click to Scan** section of the VistaScan window. After the image is scanned, VistaScan automatically closes and you return to the PhotoDeluxe window. The scanned image appears in the PhotoDeluxe work area.
8. Click the **Done** tab. A thumbnail of the image you scanned appears in the **Open Photos** window on the left side of the PhotoDeluxe window.
9. Click on the **Save & Send** icon.
10. Choose the **To the World Wide Web...** option from the drop-down menu.
11. Follow the on-screen instructions for trimming, sizing, reducing, and specifying the file format (either GIF or JPEG compressed formats).

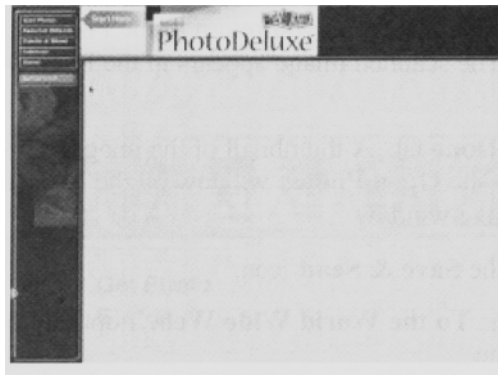
If you choose the GIF format: An **Export Options** window appears modifying you it will convert the photo to the GIF format. Click **OK**. An **Export GIF** window appears.

If you choose JPEG format: A **Save** window appears.

12. Select the location where you want to save the image by clicking on the arrow to the right of the **Save in** field. This displays your folder or directory structure. Choose a location by clicking on it.
13. Enter the name you would like to save the file as in the **File Name** field. Click the **Save** button.
14. Click the **Done** tab. Your Web-ready image is now located in the destination you specified.

For Macintosh Users:

1. Open the PhotoDeluxe application. The PhotoDeluxe window appears.



Refer to *Chapter 2. Your First Scan* for instructions on how to start PhotoDeluxe.

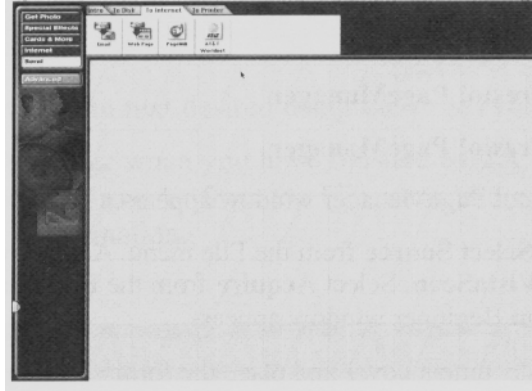
2. Place the item you would like to scan (i.e. a picture, a brochure, etc.) face-down so the top center of the image aligns with the arrow at the top of the object glass.
3. Click the **Preview** button on the right side of the VistaScan Beginner window. A window appears notifying you that the scanner is calibrating.
4. The preview image should now be displayed in the Preview window area on the left side of the VistaScan window.
5. You can edit the **Preview image** before scanning the final image using the “Zoom Tool” and the “Frame Selection Tool”.
6. Click the **Web Image** icon in the **Click to Scan** section of the VistaScan Beginner window. The image is scanned and you return to the PhotoDeluxe window.

NOTE: Choosing an icon in “Click to Scan” area does two things: it activates the scanner, and automatically sets all of the scanner settings to ensure you get the best scanning results.

7. When the scan is complete, a window appears requesting that you save the document. Type a name in the field that appears to the right of “Save this document as:”

NOTE: By default the image is saved as “untitled - #” in the **Acquire** section of the floating gallery window. You can also choose to save the image in the hard drive or on the desktop by clicking on the arrow to the right of the My Photos box at the top of this window.

8. After a moment the image appears in the My Photos gallery window. Double-click the thumbnail to view a full-size, high-resolution scan of the image in the work area.
9. Click on the **Send** button.
10. Click the **To the Internet** tab.



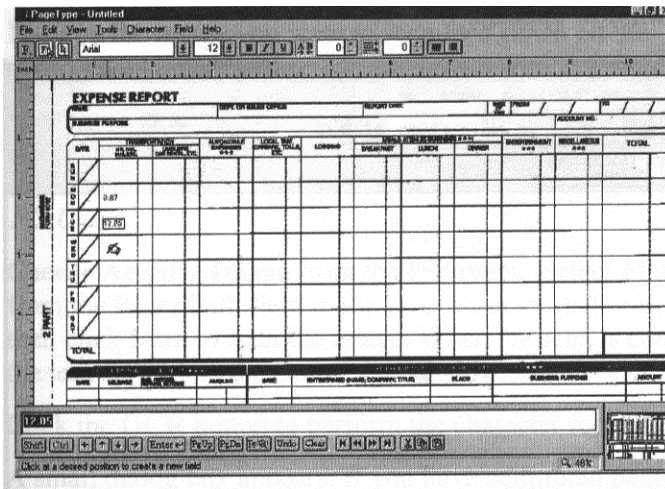
11. Click the **Web Page** button. A new window appears allowing you to alter the image.
 - Click the **1Trim** tab to select the portion of the image you want to use. Click **OK** when finished.
 - Click the **2Size** tab to adjust the size of the image.
 - Click the **3Reduce** tab to convert the image to a lower resolution to make the image easier to download.
 - Click the **4Choose** tab to convert the image to either JPEG or GIF format. A Save window appears. Choose a location in which to save the image. Click the **OK** button in the window that appears to continue converting the image to the format you choose.
12. Click the **5Done** tab to finish.
13. Select **Quit** from the File menu to exit PhotoDeluxe.

Using Presto! PageManager to Scan a Form and Edit it with PageType

NOTE: Presto! PageType is not a Macintosh compatible application. The following procedure is for PC users only.

1. Click the **Start** bar in the bottom-left corner of the screen.
2. Click **Programs**.
3. Select **Presto! PageManager**.
4. Select **Presto! PageManager**.
5. The Presto! PageManager window appears.
6. Choose **Select Source** from the File menu. A window appears, choose **VistaScan**. Select **Acquire** from the file menu. The VistaScan Beginner window appears.
7. Lift the document cover and place the form you want to scan face-down in the center of the object glass of the scanner.
8. Click the **Preview** button.
9. Click the **Text/lineart** icon in the **Click to Scan** area to begin the scan.
10. When the scan is complete, click the **Exit** button at the bottom of the window. The scanned image of your form appears in the PageManager Inbox window.

- Click and drag the scanned form down to the PageType application icon. PageType opens and automatically displays the scanned form.



- Fill in the form text desired using the PageType tools.
- Save the image when you have finished editing the form by selecting **Save As** from the File menu and entering the relevant information.



Creating a Calendar with PhotoDeluxe

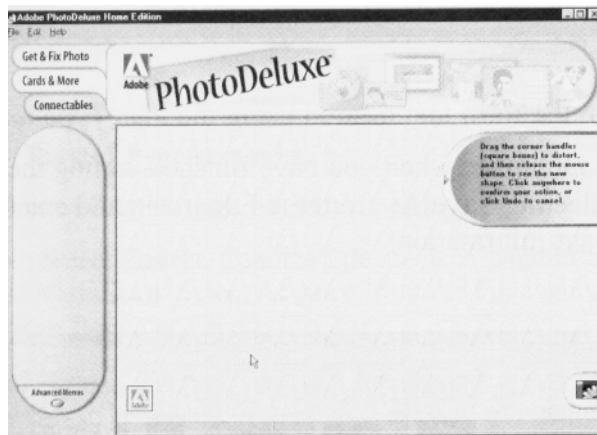
You can create your own calendar using PhotoDeluxe. This process differs for PC and Macintosh users. Follow the appropriate instructions for the system that you are using.

For PC Users:

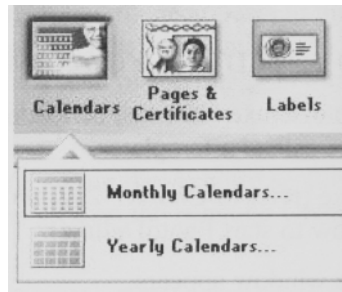
- Insert the PhotoDeluxe CD in your CD-ROM drive.

NOTE: The PhotoDeluxe CD must be loaded in the CD-ROM drive to access the calendar templates.

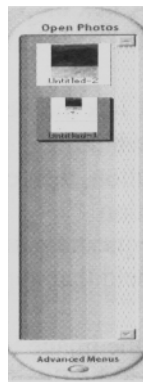
- Open PhotoDeluxe (refer to *Chapter 2. Your First Scan* for instructions on how to start PhotoDeluxe).
- The PhotoDeluxe window opens.



4. Click the **Cards & More** button.
5. Click the **Calendars** icon, and choose the **Monthly Calendars** option from the drop-down menu.



6. Follow the on-screen instructions through step 5, then click the Add tab and choose the scanner icon. The VistaScan Beginner window opens automatically.
7. Click the **Preview** button to perform a low-resolution scan.
8. Click on the icon that most closely matches the item you are going to scan in the **Click to Scan** area.
9. The **Open Photos** dialog box displays a thumbnail version of the image you scanned.



10. Drag the thumbnail from the Acquire section of the My Photos dialog box to the desired location on the calendar.

11. Click the **Save** from the file menu to store the calendar page, or select **Print** to print the calendar page.
12. Repeat this process until all calendar pages are complete.

For Macintosh Users:

1. Insert the PhotoDeluxe CD in your CD-ROM drive.
NOTE: The PhotoDeluxe CD must be loaded in the CD-ROM drive to access the calendar templates.
2. Open PhotoDeluxe (refer to *Chapter 2. Your First Scan* for instructions on how to start PhotoDeluxe).
3. The PhotoDeluxe window appears.
4. Click the **Cards & Calendars** tab.
5. Click the **Calendars** button and follow the onscreen instructions:
 - a) Click the **1Calendar** tab. Click the **Month** button. Choose a month, and then click **OK**.
 - b) Click the **2Year** tab and select the appropriate year.
 - c) Click the **3Layout** tab. Click the **Choose layout** button. Several layouts appear after the computer has had time to read the information from the CD. Select a layout from the Template floating window.
 - d) Click the **4Style** tab. Click the **Choose Style** button. Double-click one of the styles that appear in the Templates window.
 - e) Click the **5Add** tab. Click the **Scanner** button to launch the VistaScan Beginner window.
 - f) Click the **Preview** button, then click one of the icons from the Click to Scan section.
 - g) A window appears requesting that you save the document. Type a name in the field that appears to the right of "Save this document as:"
NOTE: By default, the image is saved as "untitled - #" in the **Acquire** section of the floating gallery window. You can also choose to save the image in the hard drive or on the desktop by clicking on the arrow to the right of the My Photos box at the top of this window.
 - h) After a moment the image appears in the My Photos gallery window. Double-click the thumbnail to view a full-size, high-resolution scan of the image in the work area.
 - i) Click the **Done** tab.
6. Drag the thumbnail from the Acquire section of the My Photos dialog box, to the area on the calendar where you wish to place the photograph.
7. Select **Save As** from the File menu to store the calendar page, or **Print** to print the calendar page.

Converting Scanned Text to Editable Text with OmniPage

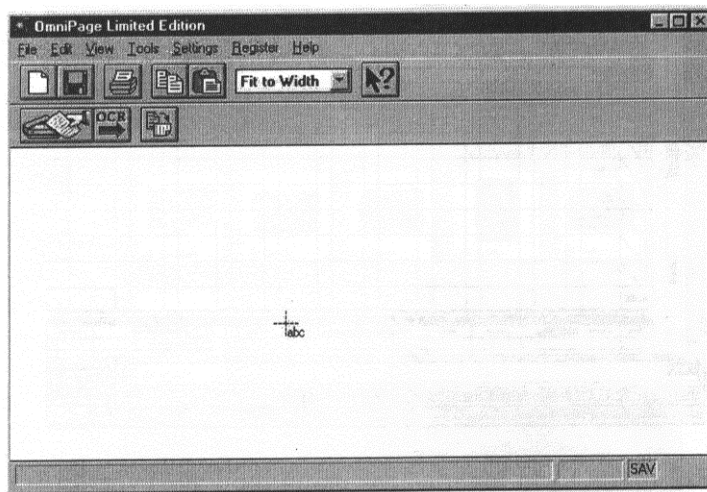
OmniPage lets you scan an image that contains text and convert it to editable text so you do not have to retype the text. The process differs slightly for PC and Macintosh users. Follow the appropriate instructions for the system that you are using.

Opening OmniPage

For PC Users:

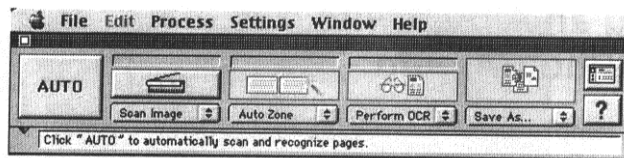
1. Click the **Start** bar in the bottom-left corner of the screen.
2. Click **Programs**.

3. Select **Caere Applications** option.
4. Select **OmniPage LE** to launch the application. The OmniPage LE window appears.



For Macintosh Users:

1. Double-click the **Hard Drive** icon.
2. Double-click **OmniPage LE**.
3. Double-click the **OmniPage LE** icon. An OmniPage toolbar appears. (If this toolbar does not appear, click on the **Window** menu and select **Show Toolbar**).



4. Click **Select Scanner** from the Settings menu. Select **UMAX Astra Series** then click **OK**.

Converting Scanned Text with OmniPage LE

1. Position the image you want to scan face-down on the scanner's object glass.
2. From the OmniPage LE window, click the **Scanner** icon and select Flatbed. Click **Done**.

For PC Users:

1. Choose **Acquire Image** from the File menu. Select **Flatbed** from the Paper Path field in the Load Scanner dialog box, then click **Scan** to scan the image. When the scan is complete, the text appears in the OmniPage window.
2. Click the **OCR** button to perform the character recognition.
3. A small dialog box appears. If you have additional pages to scan, click the **Add Pages** button and repeat steps 2 and 3.

4. Click **Stop Scanning** when you have scanned all the desired pages, and enter the file name, file directory, and file type (the format in which you want to save the file).
5. Click **OK** to save the recognized text.
6. Open your work processor application. Open the file that you just saved so you can review, edit, cut, or copy portions of the text.

For Macintosh Users:

1. Select **Scanner** from the Settings menu.
2. Click **Flatbed** from the Select Scanner window.
3. Click the **Scan Image** button to scan the image. When the scan is complete, the text appears in the OmniPage window.
4. Click the **Perform OCR** button.
5. Click **Save As** to save the converted text.
6. Choose **Quit** from the File menu to close OmniPage LE.
7. Open your word processor application. Open the file that you just saved so you can review, edit, cut, or copy portions of the text.

CHAPTER 6. HOW TO GET HELP

The Astra 3400 / 3450 scanners have been designed to be reliable, easy-to-install, and easy-to-use. If you encounter any problems while installing or using your scanner, please follow the solutions outlined below.

- Consult the online manual.
- Read the troubleshooting section below.
- Contact UMAX directly.

Using Online Manuals

All bundled software comes with online help, which essentially is an online manual. Read the following information to find out how to access the manuals for each individual software application.

Accessing the UMAX VistaScan Online Manual

For PC Users:

If the VistaScan application is already open, you can locate the manual by clicking on the user tips that pop up when your mouse scrolls over a tool. If VistaScan is not open, follow the instructions below.

1. Click **Start**.
2. Click **Programs**.
3. Click **VistaScan**.
4. Click **VistaScan User's Guide**. Your Internet browser should launch the *VistaScan User's Guide*.

For Macintosh Users:

If the VistaScan application is already open, you can locate the manual by clicking on the icon located in the upper right corner. If VistaScan is not open, follow the instructions below.

1. Double-click the **Hard Drive** icon on the desktop.
2. Double-click the **UMAX VistaScan** folder.
3. Double-click the **VistaScan Help**. Your Internet browser should launch the *VistaScan User's Guide*.

Accessing the Adobe PhotoDeluxe Online Manual

For PC Users:

1. Place the PhotoDeluxe CD in the CD-ROM drive. (If the install screen automatically launches, skip to step 4.)
2. Double-click **My Computer**.
3. Right-click the **CD-ROM drive** and select **AutoPlay**.
4. Click **ReadMe & Guide**. From here, you can select the manual best suited to your needs.

For Macintosh Users:

1. Place the Adobe PhotoDeluxe CD in the CD-ROM drive.
2. Double-click the **PhotoDeluxe CD** icon on the desktop.
3. Double-click **English**.
4. Double-click **Getting Started.pdf**. (If you receive an error, please install Adobe Acrobat Reader 3.01. See "Installing Acrobat Reader" below for instructions.)

Accessing the Presto! PageManager Online Manual

For PC Users:

1. Click **Start**.
2. Click **Programs**.
3. Click **Presto! PageManager Deluxe**.
4. Click **PageManager User's Manual**.

For Macintosh Users:

1. Double-click the **Hard Drive** icon on the desktop.
2. Double-click the **Presto! PageManager 2.31.02** folder.
3. Double-click **User's Guide.pdf**. (If you receive an error, please install Adobe Acrobat reader 3.01. See "Installing Acrobat Reader" below for instructions.)

Accessing the Caere OmniPage Online Manual

For PC Users:

1. Click **Start**.
2. Click **Programs**.
3. Click **Caere Application**.
4. Click **English Documentation**.

For Macintosh Users:

1. Double-click the **Hard Drive** icon on the desktop.
2. Double-click the **OmniPage LE** folder.
3. Double-click **OmniPage Ltd.pdf**. (If you receive an error, please install Adobe Acrobat Reader 3.01. See "Installing Acrobat Reader" below for instructions.)

Installing Acrobat Reader for Macintosh Users

To read the OmniPage LE online manual you need to use Adobe Acrobat Reader. If it is not already installed on your computer, follow the installation instructions below.

1. Place the Astra Scanners CD in the CD-ROM drive.
2. Double-click the **UMAX VistaScan CD** icon.
3. Double-click the **Acrobat Reader Install** folder.
4. Double-click the **3.0** folder.
5. Double-click the **Reader** folder.
6. Double-click the **Install Acrobat 3.0** icon.

Troubleshooting

This scanner is designed to be reliable and easy to install. If you have any problems with your scanner, please read the notes that follow to find out probable causes of the problem.

General Problems and Solutions

Problem:

The scanner lamp fails to light, flickers, or dims

Solution:

1. Check to make sure the power adapter is plugged in completely.
2. The scanning lamp is failing or has failed and needs to be changed. Please contact your dealer or UMAX Technical Support.

Problem:

The scanner text tailed. The scanner text utility is a PC-based utility. Macintosh users will not encounter this problem.

Solution:

Make sure the interface cable is properly connected to the USB connector port on your computer. Find/refresh the scanner after reinserting the USB cable. Try the other USB port on the computer.

Windows 98 Problems and Solutions

Problem:

Your USB port worked with other USB devices, but does not work with the scanner.

Solution:

It is important that you connect the scanner's power and USB cables in the following order:

1. Plug the power adapter cord into the scanner and into an outlet. The scanner's power will then be ON.

2. Connect the USB cable to the USB port on the back of the computer.

NOTE: If you unplug the scanner's power to turn it off, you must also disconnect the USB cable from the computer. To resume use of the scanner, reconnect the power cord, and then the USB Cable.

Problem:

Scanner is not present in the Device Manager. The scanner must be present in the Device manager. If there is no listing for it, the scanner will not work.

Solution:

Follow the steps below to determine if the scanner is present in the Device Manager.

1. Click the My Computer icon using the right mouse button. A pop-up menu appears.
2. Click on Properties command using the left mouse button. This brings up the Device Manager.
3. The scanner should be listed under the heading of Imaging Device.
4. If it is not present, insert the UMAX VistaScan CD-ROM into the CD-ROM drive and reinstall VistaScan.
5. Unplug the scanner cable from the back of the computer, and then plug it back into the USB port.
6. Verify there is power to the scanner.
7. If the scanner does not show up, and there is no change in the Device Manager, try another USB port. If the scanner still does not appear, contact your computer manufacturer.

Problem:

Your system resources are low. Your system resources are the amount of free resources your system can call on at a given time. This should be at 90% or above to run a scanner. Anything under 60% will cause system freezes or link fails when you attempt to access the scanner.

Solution:

Follow the steps below to determine if your system resources are too low to operate the scanner.

1. Click the My Computer icon using the right mouse button. A pop-up menu appears.
2. Click on Properties command using the left mouse button.
3. Click the Performance tab (the fourth tab under System Properties).
4. Look in the System Resources area (the second section). This number should be above 90%.
5. If not, press and hold down the CTR+ALT keys and tab the Delete once. This brings up the Close Programs window.
6. You need to end all tasks running except the EXPLORER and SYSTRAY items. To end a task, highlight an item in the Close Programs window and click the End Task button. Repeat this step for each task you want to end.

Macintosh Version Problems and Solutions

Problem:

When I daisy chain the scanner with other USB capable devices, I get a scanner error.

Solution:

Many Macintosh computers have at least two USB ports. We recommend that you connect your scanner directly to one of these ports. Daisy-chaining the scanner, or running the scanner through a hub can cause the signal to be lost before it is communicated to the computer.

To make the troubleshooting process easier, disconnect your scanner from other USB capable devices or hubs when troubleshooting.

Problem:

I cannot get the scanner to install properly, or it does not run once it is installed.

Solution:

If you are having problems installing or using the Astra 3400 / 3450 scanner, ensure that Macintosh OS 8.0 or higher is installed on your computer.

Problem:

The system takes too long to scan.

Solution:

Disable virtual memory, reboot your computer with the extensions disabled (hold down the SHIFT key during re-boot), and try again. Booting with the shift key still loads the extension.

Problem:

Your system goes to the Finder when you try to acquire the scanner.

Solution:

Plug the scanner into its own power outlet. If still does the same thing, please call UMAX Technical Support.

Problem:

The following error message appeared: **“Error: Not Enough Power to Function”**

Solution:

The Macintosh OS generates this message if:

- A device draws too much power from the USB bus
- One or more devices plugged into a hub require more power than is available
- You attached a self-powered device (such as a printer or floppy drive) to your computer without plugging it into an electrical outlet.

Remove all other devices from the USB chain, so the scanner is the only device on the USB chain. Make sure that the scanner power adapter is plugged directly into the wall, not into a power strip.

Problem:

The following error message appeared: “Error: No Driver Found”

Solution:

The Macintosh OS generates this message if it could not find a driver in the System Folder for the USB device you just connected. You may have forgotten to install the software that came with the device, or you may have put the device driver (i.e., the software that allows Macintosh to recognize and communicate with the USB device) in the wrong place in your System Folder.

Re-install the software driver from the VistaScan CD-ROM. Make sure the extension is loaded and on.

Problem:

The following error message appeared: “Scanner not found” or “Unable to control scanner”

Solution:

Follow this procedure:

1. Confirm the scanner is plugged into the computer’s USB port.
2. Go to the Apple System Profiler, listed under the Apple menu.
3. Go to the Devices & Volumes tab (Command+2). Verify the scanner is listed under the USB tree as:

Class: 0
Product ID: 16
Vendor ID: 5638

4. If not, disconnect the USB cable from the computer.
5. Go to Command, Update All Information (Command+U).
6. Reconnect the scanner, and Update All Information again. Is the scanner listed? If yes, you can begin scanning. If no, please call UMAX Technical Support.

Try the following solutions, if you are still experiencing scanning problems:

1. Plug the scanner power adapter directly into the wall outlet and not in a surge protector.
2. If using a USB hub, plug the scanner directly into the Macintosh USB port.
3. If you are using an iMac, do not run the scanner off the keyboard.
4. Download all updates for your Macintosh for USB from Apple’s Web site <http://www.apple.com>

Contacting Technical Support

UMAX Astra scanners are designed to be reliable, easy-to-install, and easy-to-use. If you encounter any problems while installing your scanner:

- Check out the UMAX Web site at www.umax.com/support
- E-mail UMAX with your technical support question at: support@umaxcare.com
- Contact your dealer or call the UMAX support line between 9 a.m. – 5 p.m. (CST), Monday – Friday at 214-739-1915.

Before calling, please be sure to have the following information ready:

- The scanner model and serial number
- The version number of the scanner driver (located on the front of the CD)
- The computer model you are using
- The application software packages that you are using
- Error codes or messages seen
- A description of what you were doing at the time of the malfunction so that the problem can be recreated
- Other observations that may aid the technician in identifying the problem and solution

When you call, please be in front of your computer. You will need to have your scanner and the computer turned on. Try to have as much information about your problem as possible. This information allows the technician to more effectively troubleshoot your problem.

Maintenance

With the exception of periodic cleaning, the scanner is virtually maintenance-free. Please read the following section to learn how to properly maintain the scanner.

Cleaning

Regularly cleaning the object glass will ensure that dirt or smudges will not reduce the quality of your scanned images. Before you clean the glass, make sure the scanner is turned off and the power cord is unplugged.

Clean the object glass and document cover with a soft damp cloth and a mild detergent or alcohol.

Warning: Do not spray the cleaning fluid directly on the object glass. Spraying the liquid directly on the glass may cause the liquid to penetrate the seams around the glass and contaminate the mirrors and lenses inside the scanner. Please be sure you spray the liquid on the cleaning cloth and then wipe the glass clean.

APPENDIX A. TECHNICAL SPECIFICATIONS

The following table defines the technical specifications for the Astra 3400 / 3450 Scanner.

Scanner Specifications

Scanner Type	1-pass color flatbed
Scanning Element	Color CCD
Optical Resolution Maximum Resolution	600 dpi x 1200 dpi 9600 dpi x 9600 dpi
Color Density	42-bit color
Light Source	Cold Cathode Lamp
Optics	Enclosed Optical System
Interface	USB v1.1
Operating System	Windows 98 / 2000, Mac OS 8.0+ (for iMac and USB-compatible Macintosh computers)
Scanning Modes	B/W, halftone, 8-bit grayscale, 14- bit grayscale, 24-bit color, 42-bit color
Maximum Document Size	8.5" x 11.7"
Scanner Dimensions	18.1" x 11.6" x 3.2"

Free Manuals Download Website

<http://myh66.com>

<http://usermanuals.us>

<http://www.somanuals.com>

<http://www.4manuals.cc>

<http://www.manual-lib.com>

<http://www.404manual.com>

<http://www.luxmanual.com>

<http://aubethermostatmanual.com>

Golf course search by state

<http://golfingnear.com>

Email search by domain

<http://emailbydomain.com>

Auto manuals search

<http://auto.somanuals.com>

TV manuals search

<http://tv.somanuals.com>