



T H E E X R 2 4 6 0



OWNER'S MANUAL

Digital Spread Spectrum

provides the longest

range, the clearest sound

and the best privacy.

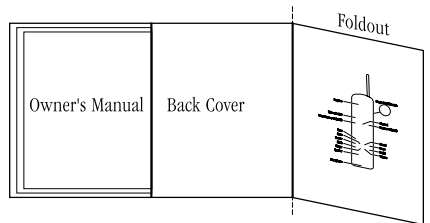
CONTENTS

OF YOUR OWNER'S MANUAL

CONTENTS

- Introduction** **1**
 - Welcome 1
 - Features 1
 - Included in Your Package 2
- Installing and Adjusting Your Phone** **3**
 - Desk/Tabletop Installation 3
 - Wall Installation 4
 - Installing the Handset Battery Pack 10
 - Charging the Battery Pack 11
 - Cleaning the Battery Contacts 12
 - Setting the Pulse/Tone Switch 12
 - Adjusting the Handset Volume Controls 13
 - Installing the Beltclip 14
 - Headset Installation 15
 - Automatic Digital Code Security 15
- Using Your New Phone** **16**
 - Making and Receiving Calls 16
 - Flash and Call Waiting 16
 - Storing a Phone Number in Memory 17
 - Editing a Phone Number in Memory 18
 - Erasing a Number from Memory 19
 - Using Memory Dialing 20
 - Traveling Out-of-Range 20
 - Using Caller ID 21
 - Using Redial 25
 - Using the Tone Feature 25
 - Using the Page Feature 26
- Troubleshooting** **27**
 - Quick Reference Chart 27
- Specifications** **29**

Fold out the back cover of this owner's manual to use the handy "Controls and Functions" page for reference.



WELCOME

Congratulations on your purchase of the Uniden EXR2460 cordless telephone. This phone is designed for reliability, long life, and outstanding performance utilizing the latest in 2.4 GHz Spread Spectrum technology.

FEATURES

- 2.4 GHz Spread Spectrum Technology
- Caller ID and Call Waiting Caller ID
- 50 Number Caller ID Memory
- Lighted keypad
- 3-Line, 16 Character Backlit LCD Handset Display
- 10 Enhanced Memory Dial Locations
- 32 Digit Redial
- 2nd Battery Capability
- Back-up Power Supply with Optional Battery Pack
- Redial, Flash, and Pause
- Pulse/Tone Dialing
- Page
- 7 Day Standby Battery Time
- 4 Hour Talk Time
- Handset Earpiece and Ringer Volume Control
- Hearing Aid Compatible

Digital Spread Spectrum Technology utilizes a “wider frequency band” vs. a “single narrow band” used in standard digital transmissions. The result is a more secure conversation with the clarity of digital sound, extended range, and minimal interference from other cordless phones.

Random Code™ digital security automatically selects one of over 65,000 codes for the handset and base.

These features enhance your phone's security and also prevent unauthorized calls as a result of your phone being activated by other equipment.

TIP

To get the most from your phone, please read this owner's manual thoroughly. Also be sure to complete and mail the product registration form.

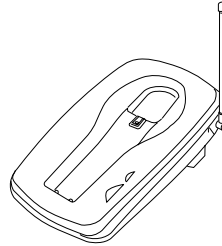
NOTE

If any of these items are missing or damaged, contact the Uniden Parts Department at (800)554-3988. Hours are from 8:00 a.m. to 5:00 p.m. Central Time, Monday through Friday. We can also be reached on the web at www.uniden.com.

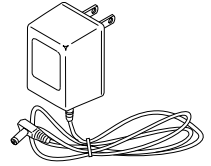
INCLUDED IN YOUR PACKAGE



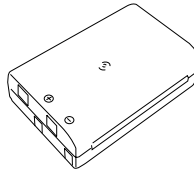
Handset



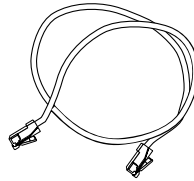
Base



AC Adapter
(AD-9500)



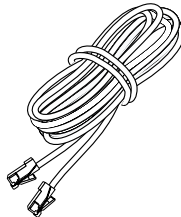
Rechargeable Battery
(BT-2499)



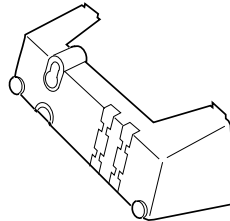
Short Telephone Cord



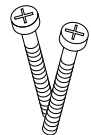
Beltclip



Long Telephone Cord



Desktop/ Wall Mount
Adapter



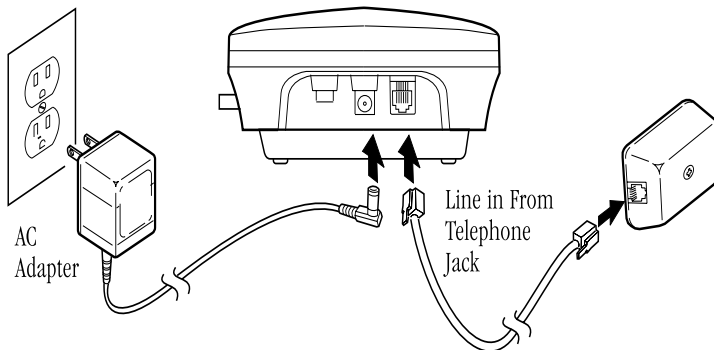
Wall Mounting
Screws

- This Owner's Manual
- Precautions and Important Safety Instructions
- Registration Card

TIP

Before choosing a location for your phone, read the "Installation Considerations" included in the "Precautions and Important Safety Instructions" brochure.

DESK/TABLETOP INSTALLATION



- 1) Plug the AC adapter cord into the 10 V DC input jack on the back of the base.
- 2) Wrap the AC adapter cord around the strain relief notch.



Place the power cord so that it does not create a trip hazard or where it could become chafed and create a fire or electrical hazard.

- 3) Plug the AC adapter into a standard 120 V AC wall outlet.



Use only the Uniden AC adapter supplied with this phone and DO NOT use an outlet controlled by a wall switch.

- 4) Charge the battery (refer to "Charging the Battery Pack," page 11).
- 5) Plug one end of the long telephone cord into the **TEL LINE** jack on the back of the base.
- 6) Plug the other end of the cord into your telephone jack on the wall.

AND ADJUSTING YOUR PHONE

INSTALLING AND ADJUSTING

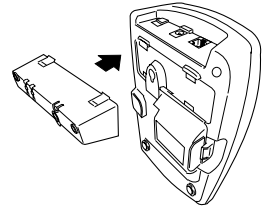
HINT

Before using your phone, fully charge the Nickel-Cadmium battery pack for 12-15 hours.

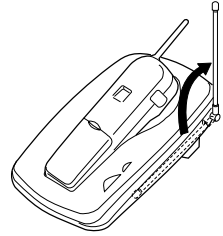


Place the power cord so that it does not create a trip hazard or where it could become chafed and create a fire or electrical hazard.

- 7) Attach the desktop stand to the base.



- 8) Set the base on a desk or tabletop and place the handset into the base. Then, raise the antenna to a vertical position.

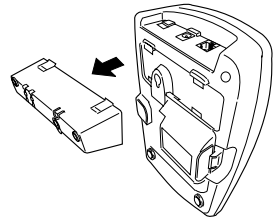


WALL INSTALLATION

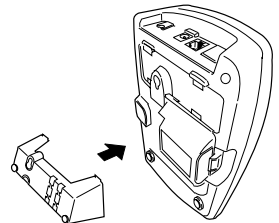
▼ *Standard wall plate mounting*

This phone can be mounted on any standard telephone wall plate.

- 1) Remove the mounting adapter from the notches at the top of the base.



- 2) Rotate the mounting adapter 180° and snap it into place at the bottom of the base.



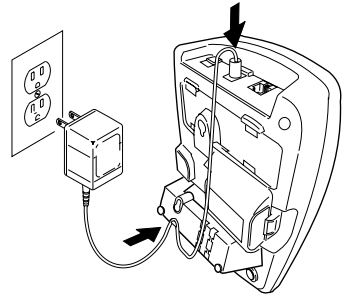


DO NOT use an outlet controlled by a wall switch.

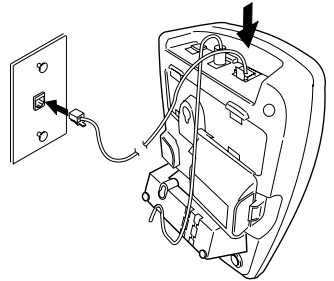


Before you plug the other end of the telephone cord into the modular jack on the wall, charge the battery (refer to "Charging the Battery Pack," page 11).

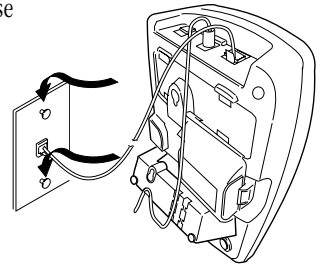
- 3) Plug the AC adapter cord into the 10 V DC input jack on the back of the base.
- 4) Put the AC adapter cord inside the molded wiring channel, then wrap it around the strain relief notch. Plug the AC adapter into a standard 120 V AC wall outlet.



- 5) Plug one end of the short telephone cord into the **TEL LINE** jack on the back of the base, then plug the other end into a standard telephone jack.



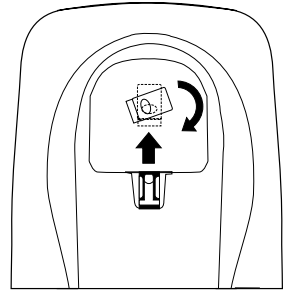
- 6) Line up the mounting slots on the base with the mounting posts on the wall, then push in and down until the phone is firmly seated.



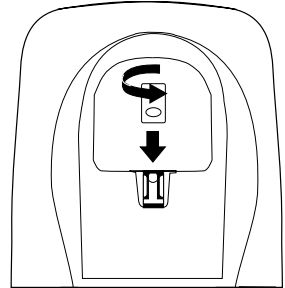


If the handset beltclip is attached, you cannot charge the handset with the display showing when the phone is mounted on the wall (See page 14).

- 7) On the base unit, pull the handset retainer out of the slot and rotate it clockwise 180°.



- 8) Flip the retainer from front to back, then slide it back into the slot so that the lip of the retainer faces up and the oval is at the bottom of the retainer. This will hold the handset in place.

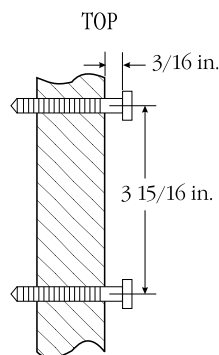


▼ *Direct wall mounting*

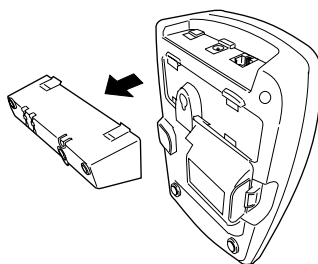
If you don't have a standard wall plate, you can mount your phone directly to the wall. Before doing this, consider the following:

- Select a location away from electrical cables, pipes, or other items behind the mounting location. Inserting screws into areas such as this can be hazardous.
- Try to mount your phone within 10 - 15 feet of a working phone jack in order to avoid excessive cord lengths. Remember, you are not mounting to a wall plate with a built in phone jack.
- If the selected mounting area has no wooden support beams directly behind it, you will need the appropriate anchoring devices in order for the wall to properly support your phone.

- 1) Insert two mounting screws into the wall, with their appropriate anchoring device, 3-15/16 inches apart. Allow about 3/16 of an inch between the wall and screw heads for mounting the phone.

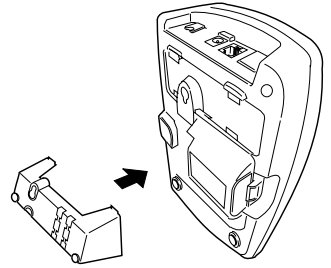


- 2) Remove the mounting adapter from the notches at the top of the base.



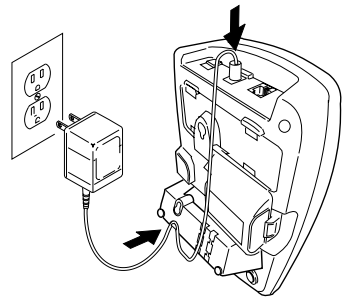
Be careful not to insert the mounting screws into possible electrical hazards such as cables, wiring, or pipes.

- 3) Rotate the mounting adapter 180° and snap it into place at the bottom of the base.

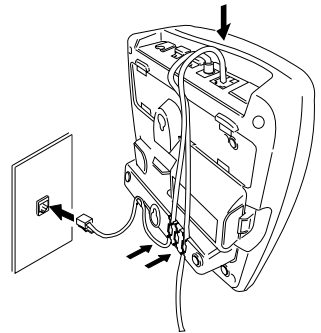


- 4) Plug the AC adapter cord into the 10 V DC input jack on the back of the base.

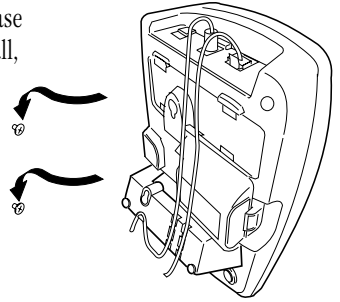
- 5) Put the AC adapter cord inside the molded wiring channel, then wrap it around the strain relief notch. Plug the AC adapter into a standard 120V AC wall outlet.



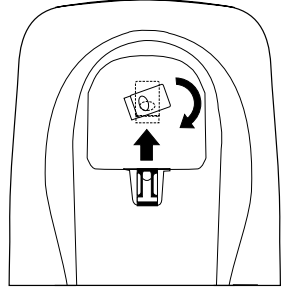
- 6) Plug one end of the long telephone cord into the **TEL LINE** jack on the back of the base, then plug the other end into a standard telephone jack.



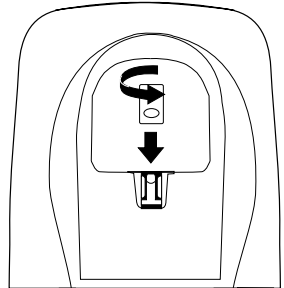
- 7) Line up the mounting slots on the base with the mounting screws on the wall, then push in and down until the phone is firmly seated.



- 8) On the base unit, pull the handset retainer out of the slot and rotate it clockwise 180°.



- 9) Flip the retainer from front to back, then slide it into the slot so that the lip of the retainer faces up and the oval is at the bottom of the retainer. This will hold the handset in place.

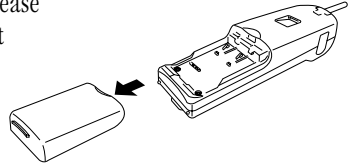


INSTALLING THE HANDSET BATTERY PACK

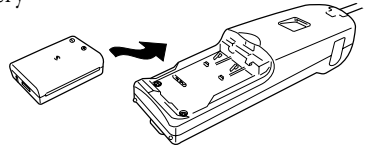


Use only Uniden battery model (BT2499) supplied with your phone.

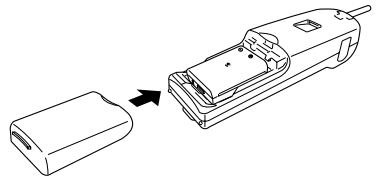
- 1) Press in on the battery cover release and slide the cover down until it comes off.



- 2) Install the nickel-cadmium battery with the label facing down.



- 3) Slide the battery cover on until it snaps into place.



CHARGING THE BATTERY PACK

▼ *Initial battery charging*

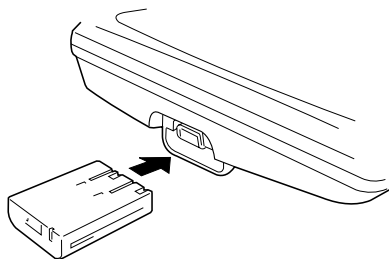
Before plugging the phone line into your new phone for the first time, fully charge the battery pack for 12-15 hours *without interruption*.

- 1) Place the handset on the base.
- 2) Make sure that **status** LED lights. If the LED doesn't light, check to see that the AC adapter is plugged in and that the handset makes good contact with the base charging contacts.

▼ *Charging optional battery packs*

The base unit of your phone is equipped with a compartment for charging an extra battery pack for use in your handset. **You can obtain an extra battery pack from your authorized Uniden dealer.**

- 1) Position the battery pack so the inner side with contacts is facing up.
- 2) Slide the battery pack into the charging compartment until it clicks into place.



- 3) Charge the battery for 24 hours. When charging is complete, pull up on the latch to remove the battery pack. To install the charged battery into the handset, refer to "Installing the Handset Battery Pack," page 10.



In the event of a power failure, your spare battery pack can be used as a back-up power supply for the base unit.

NOTE

Please visit your authorized Uniden dealer to obtain an extra battery pack or contact the Uniden parts department at (800)554-3988. Hours are from 8:00 a.m. to 5:00 p.m. Central Time, Monday through Friday.

▼ *Low battery indicator*

When the battery pack is very low and needs to be charged, the phone is programmed to eliminate functions in order to save power. If the phone is not in use, **Low Battery** flashes. If the phone is in use, **Low Battery** flashes and the handset beeps. Complete your conversation as quickly as possible and return the handset to the base for charging.

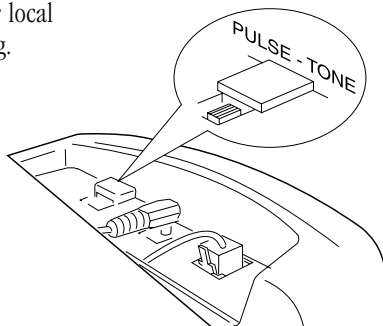
Low Battery

CLEANING THE BATTERY CONTACTS

To maintain a good charge, clean all charging contacts on the handset and base about once a month with a pencil eraser or other contact cleaner. **DO NOT** use liquids or solvents; you may damage your phone.

SETTING THE PULSE/TONE SWITCH

Be sure the **PULSE/TONE** switch is in the **TONE** position unless your local phone system uses pulse dialing.



TIP

Most phone systems use tone dialing. Check with your local phone company if you're not sure whether your system is tone or pulse.

ADJUSTING THE HANDSET VOLUME CONTROLS

▼ *Handset ringer volume*

When the phone is in standby mode, pressing the **vol ▲** or **▼** key on the handset selects the handset ringer volume. There are two ringer volume settings; high and low.

To select the high volume setting, press **vol ▲**. The handset displays Ringer High.



Ringer High

To select the low volume setting, press **vol ▼**. The handset displays Ringer Low.



Ringer Low

▼ *Handset earpiece volume*

There are four volume settings for the handset earpiece; Loud, High, Medium, Normal. The handset earpiece volume can only be adjusted during a call.

To lower the volume, press **vol ▼**, and to raise the volume, press **vol ▲**. The handset will display Loud, High, Medium, Normal, indicating the current volume setting.

This setting will remain in effect after the telephone call has ended.

When you press **▲** in Loud mode or press **▼** in Normal mode, error sound beeps.

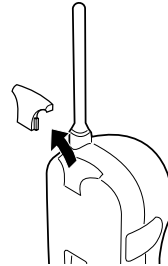


If you have wall mounted the base, you must remove the beltclip to charge the handset with display showing.

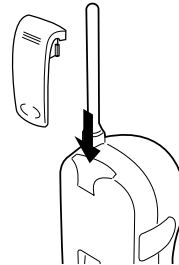
INSTALLING THE BELTCLIP

▼ To attach the beltclip

- 1) Remove the slot cover.

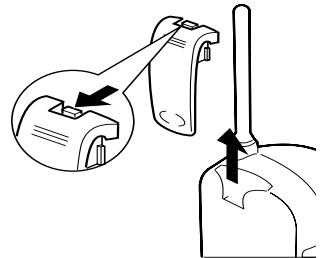


- 2) Insert the beltclip into the empty slot and press down until it clicks.

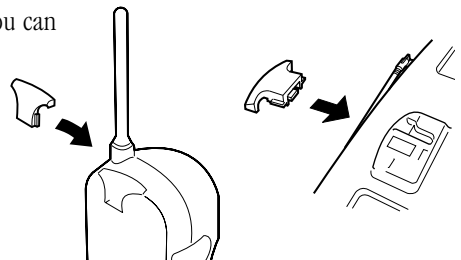


▼ To remove the beltclip

- 1) Pull back on the release tab and pull the beltclip up.



- 2) Replace the slot cover. You can store either the beltclip or slot cover on the bottom of the base.



IMPORTANT

Use only the Uniden HS910 headset specifically designed for Spread Spectrum Phones. You will hear a buzz or hum on other headsets.

IMPORTANT

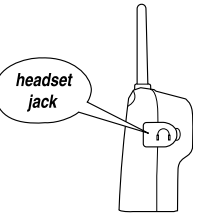
Keep headset wire away from base antenna.

NOTE

If you are using an optional headset, you must still use the handset keypad for phone operations.

HEADSET INSTALLATION

Your phone may be used with an optional headset, the Uniden HS910. To use this feature, simply insert the headset plug into the headset jack. Your headset is ready for hands-free conversations.




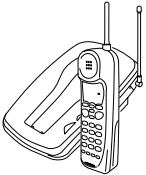
AUTOMATIC DIGITAL CODE SECURITY

To prevent other parties from making unauthorized calls on your phone line, a digital code was added to the EXR2460. Your phone's handset and base share this code, which is randomly set each time you place the handset in the charging cradle. If the phone experiences a power failure, you must reset the digital security code.

▼ *To reset the digital security code*

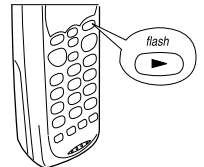
- 1) Restore power to the base.
- 2) Place the handset on the base. The **status** LED blinks to indicate that the digital security code is reset.

MAKING AND RECEIVING CALLS

	Handset On Base 	Handset Off Base 
To answer a call	<ol style="list-style-type: none"> 1) Pick up the handset. 2) If not in Autotalk Mode, press talk. 	<ol style="list-style-type: none"> 1) Press any key. 2) If not in Autotalk Mode, press talk.
To make a call	<ol style="list-style-type: none"> 1) Pick up the handset. 2) Press talk. 3) Listen for the dial tone. 4) Dial the number. <p style="text-align: center;">OR</p> <p>Dial the number, then press talk.</p>	<ol style="list-style-type: none"> 1) Press talk. 2) Listen for the dial tone. 3) Dial the number. <p style="text-align: center;">OR</p> <p>Dial the number, then press talk.</p>
To hang up	Press talk , or return the handset to the base (AutoStandby).	
To redial	<ol style="list-style-type: none"> 1) Pickup handset. 2) Press talk. 3) Listen for dial tone. 4) Press redial. <p style="text-align: center;">or</p> <ol style="list-style-type: none"> 1) Pickup handset. 2) Press redial. 3) Press talk. 	<ol style="list-style-type: none"> 1) Press talk. 2) Listen for dial tone. 3) Press talk. <p style="text-align: center;">or</p> <ol style="list-style-type: none"> 1) Press redial. 2) Press talk.

FLASH AND CALL WAITING

If you have “call waiting” service and a call waiting tone sounds while you are on a call, press **flash** to accept the waiting call. There is a short pause, then you will hear the new caller. To return to the original caller, press **flash** again.



NOTE

Whenever you are using a menu screen, you must press a key within 20 seconds or the phone will return to standby. You may also press **memory** to exit a memory menu at any time.

HINT

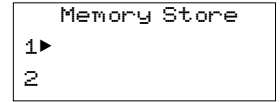
The character menu consists of letters, symbols, and numbers.

NOTE

The pause button counts as one digit. Pressing **pause** more than once increases the length of pause between numbers.

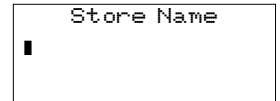
STORING A PHONE NUMBER IN MEMORY

- 1) Remove the handset from the base.
- 2) Press and hold **memory** until the confirmation tone sounds. The following screen appears.



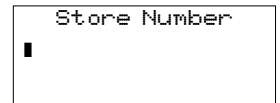
- 3) Use the ▲ and ▼ keys or number keypad to choose the memory location where you would like to enter a number.

- 4) Press **select**. The following screen appears, and a cursor flashes indicating that the display is ready for the name to be entered.



- 5) Use the ▲ and ▼ keys to scroll through the character menu. Use the ◀ and ▶ keys to move the cursor to the desired location, and enter the name.

- 6) Press **select**. The following screen appears, and a cursor flashes indicating that the display is ready for the number.

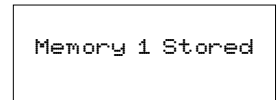


- 7) Enter the phone number with the number keypad (direct entry).

NOTE

*When entering numbers, press **pause** to enter a pause in the dialing sequence. The display shows a P. The pause feature is useful for long distance calling, credit card dialing, or sequences requiring a pause between digits.*

- 8) Press **select**. The handset beeps and displays a confirmation screen. For example, if you store a name and number into memory location number one, the display shows **Memory 1 Stored**.



- 9) Press **memory** to exit store mode. Or, wait 20 seconds for the phone to return to standby.

NOTE

Whenever you are using a menu screen, you must press a key within 20 seconds or the phone will return to standby. You may also press **memory** to exit a memory menu at any time.

NOTE

If you select **Go Back** at any time, no changes are made and the handset shows the Memory Store screen.

EDITING A PHONE NUMBER IN MEMORY

Follow these steps to edit a phone number that you have already programmed into memory.

- 1) Remove the handset from the base.
- 2) Press and hold **memory** until the confirmation tone sounds. The display shows the Memory Store screen and any saved numbers.

Memory Store
1▶ SMITH JOHN
2 UNIDEN
- 3) Use the ▲ and ▼ keys or number keypad to select the memory location you would like to edit. The ◀ and ▶ keys toggle between the names display and the numbers display.

- 4) Press **select**. The following screen appears with the memory location number that you have selected in the display.

▶ Edit Memory 1
Delete Memory 1
Go Back

NOTE

*You may move the ▶ cursor down to Go Back and press **select** if you would like to exit this menu.*

- 5) With ▶ cursor next to **Edit Memory**, press **select**. The following screen appears, and a cursor flashes indicating that the display is ready for the name to be edited.

Store Name
SMITH JOHN
- 6) Use the ▲ and ▼ keys to scroll through the character menu. Use the ◀ and ▶ keys to move the cursor to the desired location, and enter the name.
- 7) Press **select**. The following screen appears, and a cursor flashes indicating that the display is ready for the number to be edited.

Store Number
817 555 1212
- 8) Enter the phone number with the number keypad (direct entry) or the ▲ and ▼ keys.

- 9) Press **select**. The handset beeps and displays a confirmation screen. For example, if you store a name and number into memory location number one, then the handset shows **Memory 1 Stored**.

Memory 1 Stored

- 10) The display then returns to the Memory Store screen. You may select another number to edit (return to step 3) or you may press **memory** to return to standby.

ERASING A NUMBER FROM MEMORY

Use these steps to erase a programmed number from memory. Once a number is erased, that memory location may be programmed with a new number.

- 1) Remove the handset from the base.

- 2) Press and hold **memory** until the confirmation tone sounds. The handset shows the Memory Store screen with any saved numbers displayed.

Memory Store
1 ► SMITH JOHN
2 UNIDEN

- 3) Use the ▲ and ▼ keys or number keypad to select the memory location you would like to delete. The ◀ and ▶ keys toggle between the names display and the numbers display.

- 4) Press **select**. The following screen appears with the memory location number that you have selected in the display.

► Edit Memory 1
Delete Memory 1
Go Back

- 5) Use the ▼ key to move the ► cursor down to the **Delete Memory** command.

Edit Memory 1
► Delete Memory 1
Go Back

- 6) Press **select**. The following confirmation screen appears.

Delete Memory?
Yes
► No

- 7) Use the ▲ key to move the ► cursor to the **Yes** command.

NOTE

If you select **Go Back** at any time, no changes are made and the handset shows the Memory Store screen.

NOTE

If you select **No**, no changes are made and the handset shows the Memory Store screen.

HINT

Use the ◀ and ▶ keys to toggle between the names and the numbers displayed in memory.

- 8) Press **select**. There is a confirmation tone, and the handset displays **Memory 1 Deleted**.

Memory 1 Deleted

- 9) The display then returns to the Memory Store screen. You may select another number to delete (return to step 3) or you may press **memory** to return to standby.

USING MEMORY DIALING

Follow the steps below to dial a number using a programmed memory location.

- 1) Press **memory**. The handset displays your programmed memory locations.

1▶ SMITH JOHN
2 Uniden
3 Grandma

- 2) Use the ▲ and ▼ keys or the number keypad to select the memory location you would like to dial.

1 SMITH JOHN
2▶ Uniden
3 Grandma

- 3) Press **talk** and the number is dialed.

NOTE

*When the handset is removed from the base, press **talk**, then **memory** on the handset keypad before selecting the memory location*

TRAVELING OUT-OF-RANGE

As you begin to move too far from your base unit, you will first hear a clicking sound. As you travel further out-of-range, the voice transmission will begin to break up. If you pass the range limits of the base unit, your call will terminate.

USING CALLER ID

You must subscribe to Caller ID from your phone company in order to use this feature.

▼ *Setting up Caller ID options*

There are three Caller ID setup options available; they are Autotalk, CIDCW, and Area Code.

AutoTalk allows you to answer the phone without pressing the **talk** button. If the phone rings when Autotalk is on, simply remove the handset from the cradle and the phone automatically answers the call. If the phone rings when Autotalk is off, you must press **talk** to answer the call. This option is useful to help you screen your calls more effectively.

CIDCW performs the same as regular Caller ID on a call waiting number. **You must subscribe to CIDCW from your phone company in order to use this feature.**

If you enter your 3-digit area code number in the **Area Code** option, your local area code does not appear in Caller ID messages. When reviewing Caller ID messages, you will see only the local seven digit number. For calls received from outside your local area code, you will see a full 10-digit number.

NOTE

You must subscribe to CIDCW from your phone company in order to use this feature.

NOTE

If you are using an optional headset, you must still use the handset keypad for phone operations.

NOTE

If your calling area requires 10-digit dialing do not program this option.

To change your Caller ID options:

- 1) Press **setup**. The following screen appears.

1▶Auto Talk :	Off
2 CIDCW :	On
3 Area Code :	
- 2) Use the ▲ and ▼ keys to move the cursor to the selection that you would like to change. Press the **select** key to toggle between On and Off for Autotalk and CIDCW. To enter or change the area code, then press **select** again.
- 3) After you have made your selections, press **setup** and return the handset to the charging cradle. The status LED flashes, indicating that your setup changes are now effective.

▼ Screening your calls

Caller ID allows you to review caller information before you answer your phone. After the first ring, the display shows the date, time, call count, name, and phone number of the caller. If your Caller ID service is number only, then the name does not appear on the second line.

```
12/21 12:38PM 01  
John Smith  
817-555-1212
```

If a name or number is not available, the display will show a message such as **Incomplete Data**, **Private Number**, **Private Name**, etc. Contact your phone company for more information about any persistent error messages.

▼ Reviewing Caller ID messages

To review your Caller ID messages, follow the steps below.

- 1) Press **call id**, and the Caller ID summary screen appears. The screen shows the number of new messages and total messages.

```
New : 01  
Total : 02
```

- 2) Press ▼ to scan through the messages. The most recent message appears first, with the date, time, call count, name, and phone number. Press ▲ to scan backwards through the list.

```
12/21 12:38PM 03  
John Smith  
817-555-1212
```

- 3) Once you have reviewed your oldest message, the following screen appears. Press **call id** to return to standby.

```
End
```

NOTE

If you have no New Caller ID Messages, then the "New" display is blank. Only the "Total" display appears.

NOTE

Once a Caller ID message has been viewed, it is no longer considered a new message.

NOTE

If you have no Caller ID messages, then the total is shown as 00.

NOTE

Once you have viewed all of your Caller ID messages and reach the "End" display, the message list does not cycle back to the beginning. You must press ▲ to view your previous messages.

▼ Calling a Caller ID number

- 1) Press **call id**, and the Caller ID summary screen appears. The screen shows the number of new messages and total messages.

```
New : 01
Total : 02
```

- 2) Select the number that you would like to dial. Press ▼ to scan forward through the messages and ▲ to scan backwards through the list.

```
12/21 12:30PM 03
Smith John
817-555-1212
```

- 3) Press **talk** and the number automatically dials.

▼ Storing a Caller ID number into a memory location

- 1) Press **call id**, and the Caller ID summary screen appears. The screen shows the number of new messages and total messages.

```
New : 01
Total : 02
```

- 2) Press ▼ or ▲ to find the message that you would like to store, then press **memory** to store the selected message.

```
12/21 12:30PM 03
Smith John
817-555-1212
```

- 3) The select location screen appears. Use the ▲ and ▼ keys to select a blank memory location where you would like to store the number. (If you want to replace an existing number with the Caller ID number, skip to step 5.)

```
Select Location
1▶ Smith John
2 UNIDEN
```

- 4) Press **select**. A confirmation tone sounds, and the number is programmed. (Do not complete steps 5 and 6.)

- 5) If you choose to replace an existing number with the Caller ID number, press **select**, and the following screen appears.

```
Replace Memory?
Yes
▶ No
```

- 6) Use the ▲ key to move the cursor to **Yes** and press **select**. A confirmation tone sounds, and the number is programmed.

NOTE

If you select **No**, then the Caller ID screen returns.

▼ *Deleting a Caller ID message*

To delete a single Caller ID message, follow the steps below.

- 1) Press **call id**, and the Caller ID summary screen appears. The screen shows the number of new messages and total messages.

```
New : 01
Total : 02
```

- 2) Select the number that you would like to delete. Press ▼ to scan forward through the messages and ▲ to scan backwards through the list.

```
12/21 12:38PM 03
Smith John
817-555-1212
```

- 3) Press **delete**, and the following screen appears.

```
Delete Message?
► Yes
No
```

- 4) Press **select** or **delete**. A confirmation tone sounds and the Caller ID screen returns with the next message displayed.

- 5) After you have deleted the oldest Caller ID messages, the display shows **End**. Press **call id** to return to standby.

```
End
```

▼ *Deleting all Caller ID messages*

To delete all of your Caller ID messages, follow the steps below.

- 1) Press **call id**, and the Caller ID summary screen appears. The screen shows the number of new messages and total messages.

```
New : 01
Total : 02
```

- 2) Press **delete**, and the following screen appears.

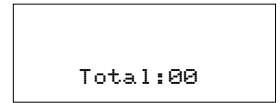
```
Delete All?
Yes
```

- 3) Use the ▲ key to move the cursor to **Yes**, then press **select** or **delete**.

NOTE

If you select **No**, then the Caller ID screen returns.

- 4) A confirmation tone sounds, and the following screen appears.
- 5) Press **call id** to return to standby.



USING REDIAL

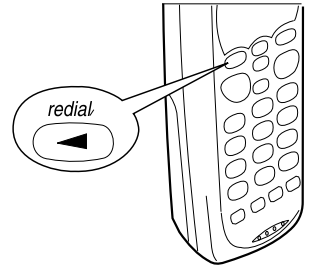
The **redial** key redials the last number dialed. The redialed number can be up to 32 digits long.

To call the last number dialed from the handset, press **talk**, then press **redial**.

or

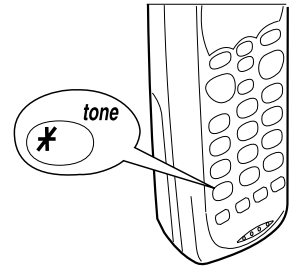
Press **redial**, then press **talk**.

*If any key is pressed before **redial**, the last number will not redial.*



USING THE TONE FEATURE

If you are dialing in the pulse mode and need to enter tone digits, press **tone** to enter the digits. Once the call has ended, the tone mode is canceled and pulse dialing resumes.

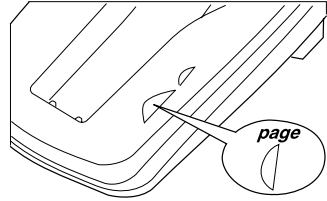


NOTE

The tone feature applies only when the base unit is set to pulse.

USING THE PAGE FEATURE

To locate the handset (while it's off the base), press **page** on the base.



To beep the handset for 5 seconds, press **page** on the base, and the handset displays paging. To beep the handset for 60 seconds, press and hold **page**.

Paging

Press **talk** on the handset to end paging. Press **talk** again to return to standby.

QUICK REFERENCE CHART

If your phone is not performing to your expectations, please try these simple steps before calling Uniden customer service. If you are still unable to resolve the problem, call customer service at (800) 297-1023.

PROBLEM	SUGGESTION
The charge light won't come on when the handset is placed in the base.	<ul style="list-style-type: none"> • Make sure the AC adapter is plugged into the base and wall outlet. • Make sure the handset is properly seated in base. • Make sure the charging contacts on the handset and base are clean.
The audio sounds weak and/or scratchy.	<ul style="list-style-type: none"> • Make sure that the base antenna is in a vertical position. • Move the handset and/or base to a different location away from metal objects or appliances and try again.
Can't make or receive calls.	<ul style="list-style-type: none"> • Check both ends of the base telephone line cord. • Make sure the AC adapter is plugged into the base and wall outlet. • Disconnect the AC adapter for a few minutes, then reconnect it. • Place the handset back on the charging cradle for a few seconds. The status LED will blink indicating that the phone has been reset.

PROBLEM	SUGGESTION
The handset doesn't ring or receive a page.	<ul style="list-style-type: none">• The Nickel-Cadmium battery pack may be weak. Charge the battery on the base unit for 12-15 hours.• The handset may be too far away from the base unit.• Place the base unit away from appliances or metal objects.• Place the handset back on the charging cradle for a few seconds. The status LED will blink indicating that the phone has been reset.

GENERAL

The EXR2460 complies with FCC Parts 15 and 68.
Frequency control: PLL
Modulation: Direct Sequence Spread Spectrum; DBPSK
Operating temperature: 0° to 50° C (+32° F to +122° F)

BASE

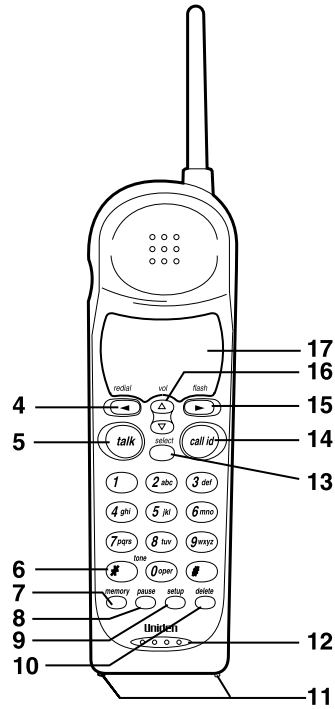
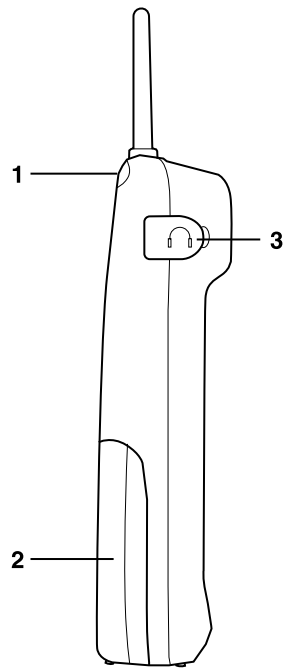
Frequency: 2400 to 2483.5 MHz (20 channels)
Power requirements: 10 V 500 mA (from AC adapter)
Size: 5-1/2 in. (W) x 3-3/4in. (D) x 10 in. (H)
Weight: Approx. 17.8 oz. (including optional battery)

HANDSET

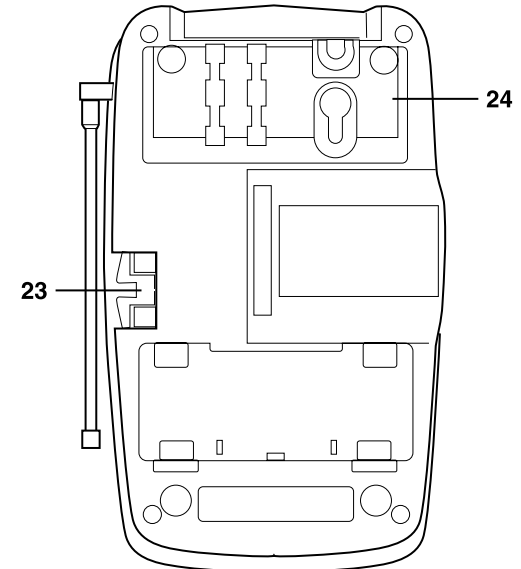
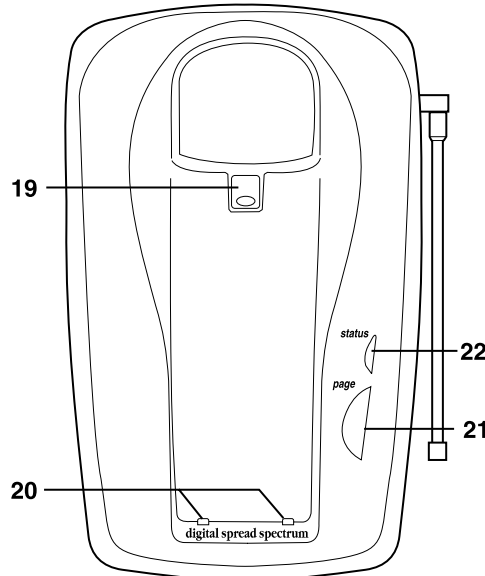
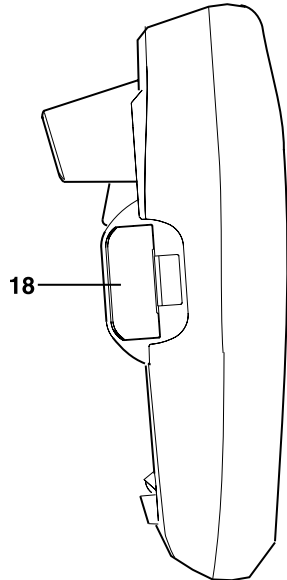
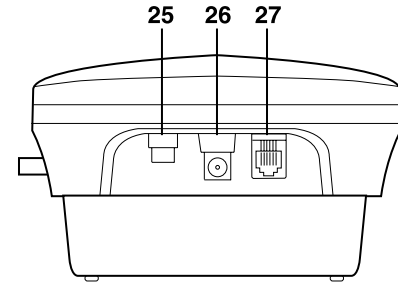
Frequency: 2454.2 to 2475.8 MHz (20 channels)
Power requirements: Rechargeable Nickel Cadmium battery pack
Size (without antenna): 2-1/4 in. (W) x 1-3/4 in. (D) x 7-1/4 in. (H)
Weight: Approx. 9.3 oz. (including battery)

Battery: BT-2499
Capacity 800 mAH, 3.6V
Talk mode 4 hours
Standby mode 7 days

Specifications, features, and availability of optional accessories are all subject to change without prior notice.



- | | |
|------------------------|--------------------------------|
| 1. Slot Cover | 15. Flash |
| 2. Battery Compartment | 16. Volume Up and Down |
| 3. Headset Jack | 17. Handset Display |
| 4. Redial | 18. Spare Battery Compartment |
| 5. Talk | 19. Handset Retainer Clip |
| 6. Tone | 20. Charging Contacts |
| 7. Memory | 21. Page |
| 8. Pause | 22. Status LED |
| 9. Setup | 23. Beltclip Holder |
| 10. Delete | 24. Desktop/Wall Mount Adapter |
| 11. Charging Contacts | 25. Pulse/Tone |
| 12. Handset Microphone | 26. DC in (10V) |
| 13. Select | 27. Tel Line |
| 14. Call ID | |



THANK YOU

FOR PURCHASING A UNIDEN PHONE!

Uniden®

Covered under one or more of the following U.S. patents:

4,511,761 4,523,058 4,595,795 4,797,916 5,381,460 5,426,690
5,434,905 5,491,745 5,533,010 5,574,727 5,650,790 5,660,269
5,661,780 5,663,981 5,671,248 5,717,312 5,754,407 5,768,345
5,787,356 5,838,721

© June 1999 Uniden America Corporation

All rights reserved • Printed in China UCZZ01650BZ

Free Manuals Download Website

<http://myh66.com>

<http://usermanuals.us>

<http://www.somanuals.com>

<http://www.4manuals.cc>

<http://www.manual-lib.com>

<http://www.404manual.com>

<http://www.luxmanual.com>

<http://aubethermostatmanual.com>

Golf course search by state

<http://golfingnear.com>

Email search by domain

<http://emailbydomain.com>

Auto manuals search

<http://auto.somanuals.com>

TV manuals search

<http://tv.somanuals.com>