

Uniden®

XS1410 Owner's Manual

OWNER'S MANUAL

Introduction

Uniden 2.4GHz cordless phones are designed and engineered to exacting standards for reliability, long life, and outstanding performance.

NOTE: Illustrations in this manual are used for explanation purposes. Some illustrations in this manual may differ from the actual unit. The color of your cordless phone may vary.

Features

- 2.4 GHz Extended Range Technology
- AutoTalk
- Tone Dialing
- 20 Channel Autoscanner
- Last Number Redial
- 10-Number Memory Dialing
- AutoStandby
- Earpiece Volume Control
- Hearing Aid Compatible
- Find Handset Locator

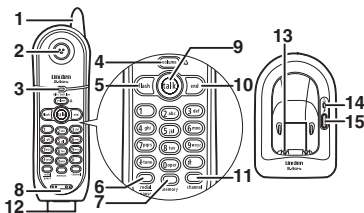
The cordless phone features **AutoTalk** and **AutoStandby**. **AutoTalk** allows you to answer a call by just removing the handset from the base so you don't have to waste time pushing keys. **AutoStandby** allows you to hang up by simply returning the handset to the base.

The **UltraClear Plus** true compander circuitry virtually eliminates background noise. This innovative technology, together with 20 different channels, provides you with the best possible reception during all your conversations.

To protect you against misbilled calls which could result from your phone being activated by other equipment, the cordless phone has **Random Code** digital security which automatically selects one of approx. 262,144 digital security codes for the handset and base. Also, the **AutoSecure** feature electronically locks your phone when the handset is charging in the base.

For more information on Uniden products and accessories, be sure to visit our web site: www.uniden.com.au or www.uniden.co.nz

Controls and Functions



1. Handset antenna
2. Handset earpiece
3. talk/batt low LED - indicates when phone is in use or the battery is low
4. [volume/Δ] - sets the ringer tone and earpiece volume
5. [flash] - accesses call waiting (if available)
6. [redial/pause] - redials the last number / adds a 2-second pause in a memory dialing sequence.
7. [memory] - enters or recalls numbers in stored in memory
8. Handset microphone and ringer speaker
9. [talk] - answers or places calls
10. [end] - hangs up a phone call / mutes the ringing tone temporarily
11. [channel] - selects another channel for clearer reception
12. Handset charging contacts
13. Base charging contacts
14. in use/LED
15. [find] - locates the handset

Included with Your Phone

• Base Unit • Handset • AC Adapter • Rechargeable Battery • Telephone Cord • This owner's manual

Terminology

Throughout this manual, terms such as Standby and Talk are used. Below is the terminology explanation.

- **Talk** - The handset is off the base and **[talk]** has been pressed, enabling a dial tone.
- **Standby Mode** - The handset may be sitting in or off the base, but is NOT in use. The talk key has not been pressed and there is no dial tone.

Installing the Phone

Do the following steps:

- Choose the best location
- Install the rechargeable battery pack into the handset
- Connect the base unit and charge the handset
- Mount the base unit on a wall

A. Choose the best location

When choosing a location for your new phone, here are some important guidelines you should consider:

PLACE YOUR BASE



TRY TO AVOID



Note: For maximum range:

- Keep both the base and handset antennas free of obstruction.
- When the handset is not in use, place the handset in an upright position.
- Metal and reinforced concrete may affect cordless telephone performance.

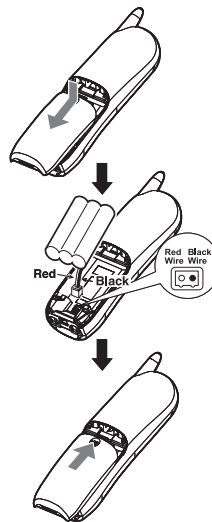
B. Install the rechargeable battery pack into the handset

The handset is powered by a rechargeable battery pack. The battery recharges automatically when the handset is placed in the base unit.

NOTE: If your home has specially wired alarm equipment connected to the telephone line, be sure that installing the system does not disable your alarm equipment. If you have questions about what will disable your alarm equipment, contact your telephone company or a qualified installer.

- 1) Press down on the handset battery case cover (use the finger indentation for a better grip) and slide the cover downward to remove.
 - 2) Plug the battery pack connector (red & black wires) into the jack inside the battery compartment (the connector notches fit into the grooves of the jack only one way). Match the wire colors to the polarity label in the battery compartment, connect the battery and listen for a click to insure connection.
 - 3) Fit the battery pack into the battery compartment.
- Before replacing the battery cover, pull on the battery wires slightly. If the connection is secure, the jack will stay in place. Then place the battery case cover back on the handset by sliding it upwards until it clicks into place.

NOTE: For optimum performance, use only the Uniden Battery (BT-905s) supplied with your phone.



C. Connect the base unit and charge the handset

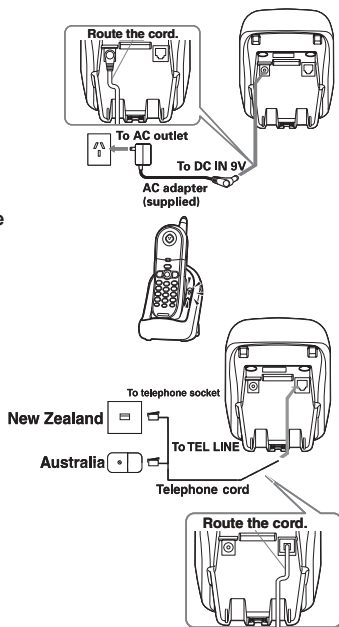
- 1) Connect the AC adapter to the **DC IN 9V** jack and a standard **240V AC** wall outlet.
- 2) Set the base unit on a desk or tabletop, and place the handset in the base unit with the keypad facing forward.
- 3) Make sure the **in use** LED illuminates. If the LED does not illuminate, check to see that the AC adapter is plugged in and the handset makes good contact with the base charging contacts.

NOTICE: Do not place the power cord where it creates a trip hazard or where it could become chafed and create a fire or electrical hazard.

NOTE:

- Use only the supplied **PS-S0921YL3 AC adapter**. Do not use any other AC adapter.
- Connect the AC adapter to a continuous power supply.
- Place the base unit close to the AC outlet to avoid long extension cords.

- 4) Charge your handset at least 15-20 hours before plugging the phone line.
- 5) Once the handset battery pack is fully charged, connect the telephone cord to the **TEL LINE** jack and a telephone outlet. If your telephone outlet isn't modular, contact your telephone company for assistance.



Talk and Standby Times

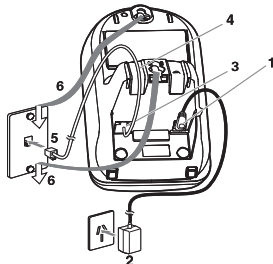
With average use, your handset battery provides approximately 6 hours of talk time and approximately 12 days of standby time. When your handset is not being used and is left off of their charging cradle, the battery will gradually discharge. You can achieve optimum battery life and performance by returning the handset to the charging cradle after each use. If the handset is left off of the charging cradle, the actual talk time duration will be reduced respective to the amount of time the handset is off of the charging cradle.

D. Mount the base unit on a wall

Standard wall plate mounting

This phone can be mounted on any standard wall plate.

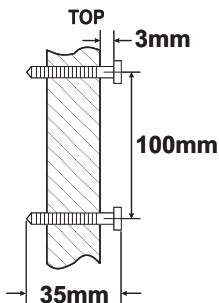
- 1) Plug the AC adapter to the **DC IN 9V** jack.
- 2) Plug the AC adapter into a standard 240V AC wall outlet.
- 3) Plug the telephone cord into the **TEL LINE** jack.
- 4) Route the telephone cord through the groove as shown.
- 5) Plug the telephone cord into the telephone outlet.
- 6) Align the mounting slots on the base with the mounting posts on the wall. Then push in and down until the phone is firmly seated.



Direct wall mounting

If you don't have a standard wall plate, you can mount your phone directly to the wall. Before doing this, consider the following:

- Avoid electrical cables, pipes, or other items behind the mounting location that could cause a hazard when inserting screws into the wall.
 - Try to mount your phone within 1.5m of a working phone jack to avoid excessive cord lengths.
 - Make sure the wall material is capable of supporting the weight of the base and handset.
 - Use #10 screws (minimum length of 35mm) with anchoring devices suitable for the wall material where the base unit will be placed.
- 1) Insert two mounting screws into the wall, (with their appropriate anchoring device), 100mm apart. Allow about 3mm between the wall and screw heads for mounting the phone.
 - 2) Refer to steps 1 through 6 above to mount the telephone.



Using Your Phone

Making and Receiving Calls

Making a call

- 1) Pick up the handset from the base.
- 2) Press **[talk]**. The **talk/batt low** LED flashes and turns on.
- 3) Listen for the dial tone.
- 4) Dial the number.

Receiving a call

If the handset is in the base, simply remove the handset from the base. AutoTalk will automatically answer the call.

If the handset is off the base, press **[talk]**, or any number key.

NOTE: If you hear noise while using your phone press the channel button. The phone will randomly change to another channel. Repeat if necessary until a clear channel is found.

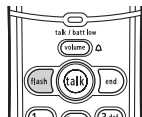
Hanging up

Press **[end]** or return the handset to the base.

Redialing the last dialed number

- 1) Pick up the handset from the base.
- 2) Press **[talk]**. The **talk/batt low** LED flashes and turns on.
- 3) Listen for the dial tone.
- 4) Press **[redial/pause]**.

Flash and Call Waiting



If a call waiting tone sounds while you are on a call:

Australia: Press the **[flash]** key and then 2 key to switch between callers.

New Zealand: Press the **[flash]** key to switch between callers.

NOTE: You must subscribe to call waiting through your telephone company.

Adjusting the Ringer Tone

When the phone is in standby, press **[volume/Δ]** to switch between the two ringer tones. The last ringer tone heard will be selected as the phone's ring tone setting.

Temporarily Mute Ringer

If the handset is off the base, simply press **[end]** to temporarily mute the incoming ring for that particular call. The ringer will sound with the next incoming call.

Adjusting the Earpiece volume

The handset earpiece volume settings can only be adjusted during a call. To adjust, press **[volume/Δ]** to scroll through the three volume levels and select the one that works best for you. When you hang up, the phone keeps the volume setting.

Traveling Out-of-Range

During a call, as you begin to move your handset too far from your base unit, noise increases.

If you pass the range limits of the base, your call will terminate within one minute.

Selecting a Different Channel

If you encounter interference while using your phone, you can manually change the phone's channel for clear operation. During a call, press **[channel]** to change the channel. The **talk/batt low** LED flashes, indicating the phone is changing to another channel.

Find Handset

To locate the handset, press **[find]** on the base. The handset will beep for 60 seconds. The beeping will stop when any handset key is pressed, when it is returned to the base, or when **[find]** is pressed. The handset will also stop beeping automatically when an incoming call is received.

Low Battery Alert

When the battery pack is very low and needs to be charged, the phone is programmed to eliminate functions in order to save power. If the phone is not in use, the **talk/batt low** LED flashes when the battery pack is low.

If the phone is in use, the **talk/batt low** LED flashes and the handset beeps. Complete your conversation as quickly as possible and return the handset to the base for charging.

NOTE:

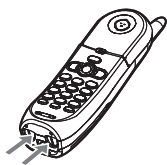
- **Even when the battery pack is not being used, it will gradually discharge over a long period of time. For optimum performance, be sure to return the handset to the base unit after each telephone call.**
- **Last number dialed and numbers stored in memory locations are retained for up to one minute while you replace the battery pack.**

Cleaning the battery charging contacts

To maintain a good charge, clean the charging contacts on the handset once a month.

To clean, dampen a cloth with plain water and gently rub the cloth over the charging contacts until all visible dirt is removed. Dry the contacts thoroughly before returning the handset to the base.

Caution: Do not use paint thinner, benzene, alcohol, or other chemical products. Doing so may discolor the surface of the telephone and damage the finish.



Contacts

Using the Speed Dial Memory

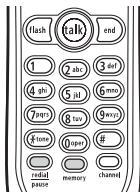
Storing Numbers in Speed Dial Memory

Your cordless phone can store up to ten numbers (up to 20 digits each) in the speed dial memory. To store number in memory:

- 1) When the phone is in standby, press **[memory]**. The **talk/batt low** LED flashes.
- 2) Use the keypad to enter the phone number.
(To enter a 2-second pause between numbers, press **[redial/pause]**. Each pause counts as a digit.)
- 3) Press **[memory]** again.
- 4) Select the speed dial location where you would like to store the number (**[0]** to **[9]**). You will hear a confirmation tone indicating that the number has been stored.

NOTE:

- Storing a number to a speed dial location will overwrite the any previously stored number without warning.
- When storing numbers into memory and the handset is idle (i.e., no key is pressed) for more than 30 seconds, it will beep rapidly, and then the phone will return to standby.



Dialing a Stored Speed Dial Number

- 1) When the phone is in standby, press **[talk]**, and listen for a dial tone.
- 2) Press **[memory]** and enter the speed dial entry (**[0]** – **[9]**) that has the stored number you want to dial. (If you enter a digit that does not contain a stored number, the handset will beep rapidly, and the phone will not dial.)

Chain Dialing

The speed dial memory is not limited to phone numbers. You can store any number (up to 20 digits) that you need to enter once your call connects. This is referred to as Chain Dialing. For example, you can save your bank account number to speed dial memory. When you call your bank's telephone teller service and are prompted to enter your account number, simply press the **[memory]** and the speed dial number where you stored your account number.

Erasing a Stored Number from Memory

- 1) With the phone in standby, press **[memory]** twice.
- 2) Press the number of the speed dial entry. A tone indicates that the stored number is erased from memory.

Changing the Digital Security Code

The digital security code is an identification code used to connect the handset and the base unit. Normally, setting the code is not necessary.

The first time you charge your handset, the security code is automatically set. In the rare situation that you suspect another cordless telephone is using the same security code, you can change the code.

- 1) Pick up the handset from the base unit. Press and hold **[find]** on the base.
- 2) While holding **[find]**, place the handset in the base unit. Leave the handset in the base for more than three seconds. A new random security code is set.

NOTE: If the handset battery pack is completely discharged or the battery pack is removed, the digital security code will be lost. If this happens, a new security code is set automatically next time the battery pack is charged.

Warning!

Uniden **DOES NOT** represent this unit to be waterproof. To reduce the risk of fire, electrical shock, or damage to the unit, **DO NOT** expose this unit to rain or moisture.

Troubleshooting

If your cordless telephone is not performing to your expectations, please try these simple steps first. If these steps do not solve your problem, please visit our website

www.uniden.co.au or www.uniden.co.nz

NOTE: Do not attempt to service this unit yourself. Servicing must be performed by qualified personnel.

Symptom	Suggestion
The in use /LED won't illuminate when the handset is placed in the base.	<ul style="list-style-type: none"> • Make sure the AC adapter is plugged into the base and a wall outlet. • Make sure the handset is properly seated in the base. • Make sure that the charging contacts on the handset are clean.
The audio sounds weak and/or scratchy.	<ul style="list-style-type: none"> • Move the handset and/or base away from metal objects or appliances and try again. • Press [channel] to help eliminate background noise. • Check both ends of the telephone cord.
Can't make or receive calls.	<ul style="list-style-type: none"> • Make sure the AC adapter is plugged into the base and a wall outlet. • Disconnect the AC adapter for a few minutes. Then reconnect it. • Change the digital security code. (see page 7.) • Make sure that the handset is not too far from the base. • Check the dialing mode used by your telephone company.
The handset doesn't ring or receive a page.	<ul style="list-style-type: none"> • The battery pack may be weak. Charge the battery for 15-20 hours. • The handset may be too far away from the base. • Move the base away from appliances or metal objects. • Change the digital security code. (see page 7.)
Severe noise interference	<ul style="list-style-type: none"> • Keep the handset away from microwave ovens, computers, remote control toys, wireless microphones, alarm systems, intercoms, room monitors, fluorescent lights, and electrical appliances. • Move the base to another location or turn off the source of interference.

Liquid Damage

Moisture and liquid can damage your cordless phone. In case of accidental submersion, please follow these steps.

Case	Action
If the handset or base is exposed to moisture or liquid, but it only affects the exterior plastic housing.	Wipe off the liquid, and use as normal.
If moisture or liquid has entered the plastic housing (i.e. liquid can be heard in the phone or liquid has entered the handset battery compartment or vent openings on the base).	<p>Handset:</p> <ol style="list-style-type: none"> 1. Remove the battery cover and leave it off for ventilation. 2. Remove the battery pack by disconnecting. 3. Leave the battery cover off and the battery pack disconnected for at least 3 days. 4. Once the handset is completely dry, reconnect the battery pack and the battery cover. 5. Recharge the handset's battery pack for 20 hours before using again. <p>Base:</p> <ol style="list-style-type: none"> 1. Disconnect the AC adapter from the base unit, cutting off electrical power. 2. Disconnect the telephone cord from the base unit. 3. Let dry for at least 3 days. <p>IMPORTANT: You must unplug the telephone line while recharging the battery pack to avoid charge interruption.</p> <p>CAUTION: DO NOT use a microwave oven to speed up the drying process. This will cause permanent damage to the handset, base and the microwave oven. After following these steps, if your cordless telephone does not work, please visit our website www.uniden.co.au or www.uniden.co.nz</p>

One Year Limited Warranty

Important: Evidence of original purchase is required for warranty service.

UNIDEN XS1410 Cordless Phone

Warrantor: Uniden Australia Pty Limited A.B.N. 58 001 865 498
Uniden New Zealand Limited
Warranty only available in original country of purchase.

ELEMENT OF WARRANTY:

Uniden warrants to the original retail owner for the duration of this warranty, its XS1410 Cordless Phone (herein after referred to as the Product), to be free from defects in materials and craftsmanship with only the limitations or exclusions set out below.

WARRANTY DURATION:

This warranty to the original retail owner only, shall terminate and be of no further effect ONE (1) year after the date of original retail sale. This warranty will be deemed invalid if the Product is;

(A) Damaged or not maintained as reasonable and necessary,

(B) Modified, altered or used as part of any conversion kits, subassemblies, or any configurations not sold by Uniden,

(C) Improperly installed,

(D) Repaired by someone other than an authorized Uniden Repair Agent for a defect or malfunction covered by this warranty,

(E) Used in conjunction with any equipment or parts or as part of a system not manufactured by Uniden, or

(F) Where the Serial Number label of the product has been removed or damaged beyond recognition.

Warranty only valid in the country of original retail/sale.

PARTS COVERED:

This warranty covers for one (1) year, the Product and included accessories.

STATEMENT OF REMEDY:

In the event that the Product does not conform to this warranty at any time while this warranty is in effect, the warrantor at its discretion, will repair the defect or replace the Product and return it to you without charge for parts or service. This warranty does not provide for reimbursement or payment of incidental or consequential damages.

This EXPRESS WARRANTY is in addition to and does not in any way affect your rights under the TRADE PRACTICES ACT 1974 (Cth) (Australia) or the CONSUMER GUARANTEES ACT (New Zealand).

PROCEDURE FOR OBTAINING PERFORMANCE OR WARRANTY:

In the event that the Product does not conform to this warranty, the Product should be shipped or delivered, freight pre-paid, with evidence of original purchase (e.g. a copy of the sales docket), to the warrantor at:

UNIDEN AUSTRALIA PTY LIMITED

SERVICE DIVISION

345 Princes Highway,
Rockdale NSW 2216
Fx (02) 9599 3278
www.uniden.com.au

UNIDEN NEW ZEALAND LIMITED

SERVICE DIVISION

150 Harris Road,
East Tamaki, Auckland
Fx (09) 274 4253
www.uniden.co.nz

Uniden®

© 2008 Uniden Australia Pty Limited/Uniden New Zealand Limited
Printed in China UPZZ01129ZZ(0)

Free Manuals Download Website

<http://myh66.com>

<http://usermanuals.us>

<http://www.somanuals.com>

<http://www.4manuals.cc>

<http://www.manual-lib.com>

<http://www.404manual.com>

<http://www.luxmanual.com>

<http://aubethermostatmanual.com>

Golf course search by state

<http://golfingnear.com>

Email search by domain

<http://emailbydomain.com>

Auto manuals search

<http://auto.somanuals.com>

TV manuals search

<http://tv.somanuals.com>