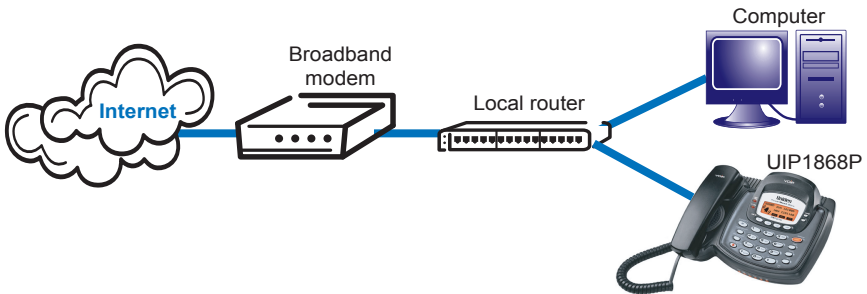


# UIP1868P Router Configuration Guide

The UIP1868P can function as your primary gateway/router or as a device client within an existing network configuration.

If you currently have broadband access and a gateway/router installed at your location, you may add the UIP1868P as a device client to your network. (See "A" below.) If you currently have broadband internet access and do not have a router, you may install your UIP1868P as the primary router to your network. (See "B" below.)

## **A** Installing the UIP1868P with an existing network configuration/router



Plug one end of the enclosed Ethernet cable into the WAN port on the back of the UIP1868P. Plug the other end of the Ethernet cable into your router/gateway which is connected to your broadband modem. The UIP1868P will automatically obtain an IP address from your existing router.

## **B** Installing the UIP1868P as your primary gateway/router



The UIP1868P supports the two most common broadband connection protocols: DHCP (most common connection type found with Cable Modem) and PPPoE (most DSL providers use this connection type).

## 1 Setting up with DHCP

The UIP1868P is configured for use with Dynamic Host Configuration Protocol (DHCP) by default. If your broadband connection uses DHCP, simply connect your broadband modem to the WAN port of the phone and then connect the phone's power cord to an AC power outlet.

## 2 Setting up with PPPoE

If your broadband connection uses PPPoE, you will need to configure the UIP1868P built-in router by inputting the user name and password provided by your Internet Service Provider. Follow the steps below to configure the UIP1868P to use a PPPoE-based connection.

- Connect a computer with a web browser directly to the LAN port of your UIP1868P.
- Type **http://192.168.15.1** (the default IP address of your UIP1868P) into the address bar of your web browser. Then press the **Enter** key. (See Figure #1)
- You should now see your UIP1868P's System Information Screen. (See Figure #2)
- In the menu bar down the left side of the screen, select **WAN**.
- In the menu bar on the top of the screen, select **PPPoE**. This opens the WAN PPPoE Configuration screen. (See Figure #3)

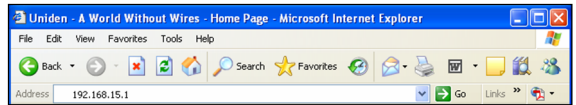


Figure #1



Figure #2

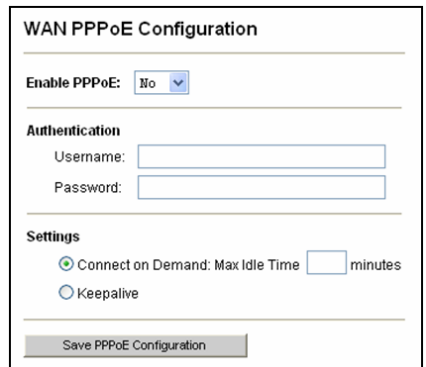


Figure #3

- f) Under **ENABLE PPPOE**, click the drop-down arrow and select **YES**.
- g) Under Authentication, enter the **USERNAME** and **PASSWORD** that were provided by your ISP. Username and password are often case-sensitive, so be sure to enter upper and lower case letters correctly.
- h) Under Settings, select the radio button labeled **KEEPALIVE**. This configures the phone to maintain the PPPoE connection even when your computer is idle or turned off.
- i) When the utility displays a window telling you it must reboot the phone, make sure your broadband modem is connected to your phone's WAN port, then click **OK**. When the phone finishes rebooting, it will ask your broadband modem to assign an IP address. (See Figure #4)

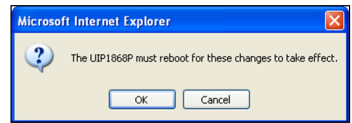


Figure #4

**NOTE:** For detailed installation with PPPoE, please refer to UIP1868P User Interface Guide – Setting up with PPPoE section.

## **Setting up with a Static IP Address**

If your broadband provider has given you a static IP address, you will need to enter that information in the UIP1868P. Follow the steps below to configure the UIP1868P for use with a Static IP address.

- Connect a computer with a web browser directly to the LAN port of your UIP1868P.
- Type <http://192.168.15.1>. (the default IP address of your UIP1868P) into the address bar of your web browser. Then press the **Enter** key. (See Figure #5)
- You should now see your UIP1868P's System Information Screen. (See Figure #6)

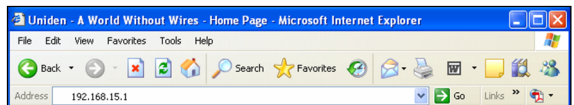


Figure #5

Uniden		UIP1868P	Powered By: Packet8
Home	View	LAN	System
Upgrade Firmware	Reset		
<b>Home</b>			
Welcome to the UIP1868P configuration utility. Select from the configuration options in the menu on the left.			
<b>System Information</b>			
System Uptime:	0 days, 0h, 6m 59s		
LAN IP Address:	192.168.15.1 (Static)		
LAN MAC Address:	00:90:90:10:4b:87		
WAN IP Address:	172.20.5.32 (Dynamic)		
WAN MAC Address:	00:90:90:10:8b:87		
SIP Server:	proxy-equipo.packet8.net:15062		
Security:	No password installed		
Application Code Version:	CDS version: 1.0 US (B# 001300)		
Downloader Code Version:	1.0 US (B# 010207)		

Figure #6

- In the menu bar down the left side of the screen, select **WAN**.
- In the top menu bar, select **WAN Settings**. This will open the WAN Configuration screen. (See Figure #7)
- Select the radio button labeled **SPECIFY FIXED WAN CONFIGURATION**.

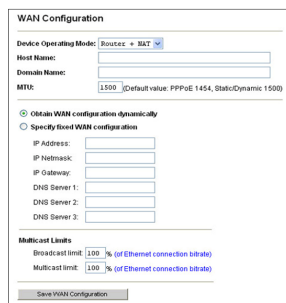


Figure #7

- Enter the IP Address, Subnet Mask, and Gateway Address provided by your ISP.
- Click **SAVE WAN CONFIGURATION**.
- When the utility displays a window telling you it must reboot the phone, make sure your broadband modem is connected to your phone's WAN port, then click **OK**. When the phone finishes rebooting, it will ask your broadband modem to assign an IP address. (See Figure #8)

**NOTE:** For detailed installation with a Static IP address, please refer to the UIP1868P User Interface Guide – WAN Configuration section.

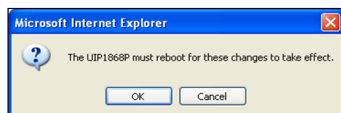


Figure #8

**You are now ready to activate your Packet8 account. (Please refer to the Uniden Quick Start Guide instructions for activating your Packet8 account.)**

You can download a copy of the UIP1868P User Interface Guide at <http://www.packet8.net/support/faqs/>

**Uniden®**

**Packet8™**

## Packet8 Broadband Phone Service Reference Card

### ▶ **Calling with Packet8 service— just like using your home or cell telephone**

- ▶ To call anywhere in the world, dial: country code + area code + number.  
Example: the country code for the U.S. and Canada is "1."  
Dial: 1+area code+number.
- ▶ Anyone can call you at your Packet8 phone number.

### ▶ **Using the Features of your Packet8 service**

- ▶ **Advanced Call Features:** these features are activated with the [Flash] key on your phone (or going on-hook for half second then going off-hook):
  - **Caller ID:** automatic when presented.
  - **Call Waiting:** a beep is heard when there is an incoming call. Answer the incoming call by pressing the [Flash] key.
  - **Line-alternate/Hold:** press the [Flash] key to put the current line on hold.
  - **3-way Conferencing:** during a call, press [Flash], call third party, then press [Flash] to conference. Press [Flash] again to drop the last person added.
  - **\*69 Call Return:** press \*69 and stay on the line to automatically ring the last number that called your number.
  - **\*70 Call Waiting Disable:** to disable call waiting on a per-call basis, enter \*70 before dialing. You can disable call waiting and send new callers to voicemail, or present a busy tone if voicemail is disabled while you are on a phone call.
  - **\*77 Anonymous Call Rejection (ACR):** a feature that rejects incoming calls from anonymous callers. It will automatically stop all incoming calls from callers who have their numbers blocked. To de-activate ACR, press \*87.
  - **\*78 Do Not Disturb:** automatically send your calls directly to your voice messaging box without ringing your phone. You will hear a stutter tone on your phone to indicate the feature is turned on. To de-activate, press \*79.
  - **Call Forwarding:** you can forward your phone to ring somewhere else. Go to your account details page after signing in at [www.packet8.net](http://www.packet8.net) or call from your Packet8 phone: 012-0005.

# Packet8<sup>®</sup>

Communication for the  
Broadband Generation

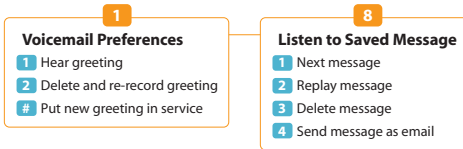
 8x8, Inc.

## VoiceMail Reference Card

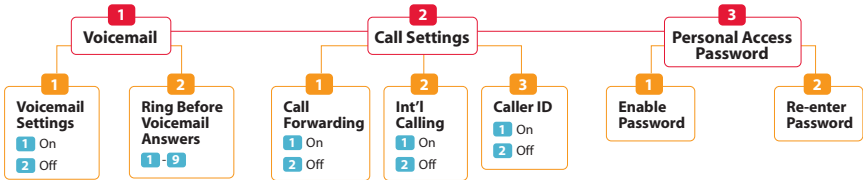
### ▶ Using VoiceMail on your Packet8 service

- ▶ To check your Packet8 voicemail:
  - From your Packet8: 012-0555
  - From any phone, toll-free: 1.888.898.7887
  - From any phone outside the U.S.: 1.650.353.4400
- ▶ When prompted, enter your Packet8 phone number (1+area code+number) and then your password
- ▶ If you have a message waiting, you can press:
- ▶ If you do not have a message waiting, you can press:

- ▶ 1 Next message
- ▶ 2 Replay message
- ▶ 3 Delete message
- ▶ 4 Save messages and listen to the next



- ▶ There are two ways to change your voicemail settings, voicemail password, number of rings, and call settings:
  - Access your account details page after signing in at [www.packet8.net](http://www.packet8.net)
  - Call from your Packet8: 012-0005
- ▶ When prompted, enter your Packet8 phone number, then your password
- ▶ Telephone keypad map for changing your Packet8 account settings:



### Packet8 Contact Information:

- Automated Activation Service: 012-0001
- Automated IP Address/Phone Number Service: 012-0003
- Packet8 Voicemail: 012-0555

### Support:

- [www.packet8.net/support](http://www.packet8.net/support)
- Customer Service, toll-free: 1.888.898.8733
- Customer Service, outside U.S.: 1.408.687.4120

# Packet8®

3151 Jay Street  
Santa Clara, CA U.S.A. 95054  
Tel: 408.727.1885 • Fax: 408.980.0432  
[www.packet8.net](http://www.packet8.net)

Packet8, the Packet8 logo, and the 8x8, Inc. logo are registered trademarks of 8x8, Inc. 8x8, Inc. is a Nasdaq listed company, symbol EIGHT.  
© 2005, 8x8, Inc. All rights reserved.

QR4001 0205

## Free Manuals Download Website

<http://myh66.com>

<http://usermanuals.us>

<http://www.somanuals.com>

<http://www.4manuals.cc>

<http://www.manual-lib.com>

<http://www.404manual.com>

<http://www.luxmanual.com>

<http://aubethermostatmanual.com>

Golf course search by state

<http://golfingnear.com>

Email search by domain

<http://emailbydomain.com>

Auto manuals search

<http://auto.somanuals.com>

TV manuals search

<http://tv.somanuals.com>