

UTStarcom iAN-02EX

TELEPHONE'S ANALOGUE ADAPTER

INSTALLATION GUIDE

Release V1.8.2.17a



SUMMARY

SKYPHO VOIP SERVICE.....3
iAN-02EX UTStarcom PACKAGE CONTENT3
EQUIPMENT PHYSICAL CONNECTION4
ACCESS TO THE ADAPTER5
Access to ATA when the DHCP service is working5
Access to ATA when the DHCP is not working6
ATA CONFIGURATION.....7
WAN parameters7
NTP parameters7
LAN parameters.....8
VoIP parameters.....9
Save configuration11
CONFIGURATION PARAMETERS OF UTStarcom IAN-02EX ATA EQUIPMENT 12



SKYPHO VOIP SERVICE

The use of the SKYPHO's voice service on IP (VoIP) is simple and quick. You need only an Internet access, a traditional telephone (analogue) and a PC, and with few "clicks" you could use the new telephone line with quality equal to the traditional landline.

To use the SKYPHO's VOIP service, you need:

- One computer with an Ethernet port;
- One modem/router with a LAN port
- One Internet access;
- One Username and one Password (account SIP).

The **SIP account** is the registration made on SKYPHO's server that allows the access the VoIP services provided by the server itself. It is composed by a **Username**, coincident with the telephone number you have been assigned and a **Password** (confidential access code) by which you can access the telephone services of Eutelia.

ATTENTION! The confidentiality of these data is necessary in order to guarantee that services will be accessed only by you. For your major safety, you can choose a new password by accessing on Eutelia's registration site.

iAN-02EX UTStarcom PACKAGE CONTENT

One iAN-02EX telephone adapter

One telephone cable (rj-11)

One Ethernet cable (rj-45)

One power adapter

One user manual

Telephone's Analogue Adapter (ATA)



Easy Start Manual



Ethernet cable (rj-45)

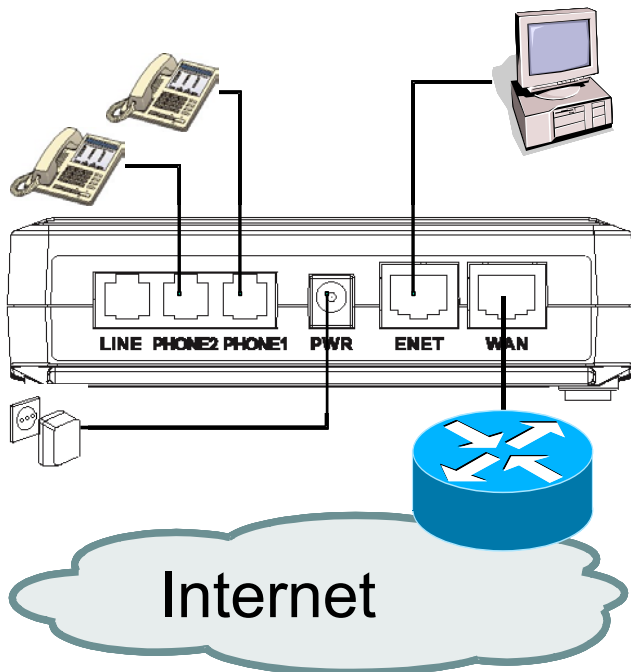


Telephone cable (rj-11)



EQUIPMENT PHYSICAL CONNECTION

First of all, you have to make the physical connection of the equipment, following the simple instructions hereafter included:



- ❑ insert the rj-45 Ethernet cable into the port ENET of the iAN-02EX ATA
- ❑ connect the other end of the cable to the Ethernet port of your personal computer
- ❑ connect the analogue telephone to the ATA's "PHONE1" port
- ❑ if you have subscribed a VoIP second line, connect another analogue telephone to the ATA's "PHONE2" port
- ❑ connect the power adapter provided with the iAN-02EX to the wall socket
- ❑ insert the Ethernet cable to the WAN port of the iAN-02EX ATA
- ❑ connect the other end of the cable to your LAN (Hub/Router).

At the end of the connections, the "PWR", "WAN", "ENET", and "VoIP" LEDs will light:

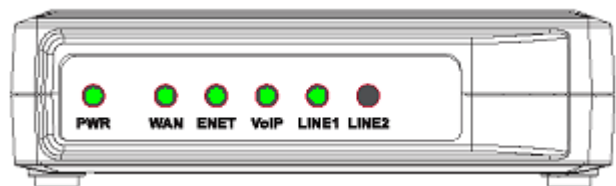
PWR: Lighted shows that the ATA is powered by the wall socket.

ENET: Lighted shows that the "physical" connection between your PC and the ATA is working correctly. **Blinking** when data is being transmitted or received from or towards your PC.

WAN: Lighted shows that the "physical" connection between the ATA and the ADSL modem is working correctly. **Blinking** when data is being transmitted or received:

VoIP: Lighted shows that you are registered to the VoIP service of Eutelica and that you can make a calls.

LINE1/2: Blinking when call is being received or transmitted.



ACCESS TO THE ADAPTER

When you finished the connections, you can proceed with the iAN-02EX ATA configuration.

Before proceeding with the ATA configuration it is necessary to verify if in your router the DHCP service is working, (this means that in your LAN are used IP addresses in a dynamic way), or if the DHCP service is not working, (this means that in your LAN are used IP addresses in a static way).

Based on what mentioned above, please proceed with the suitable instructions that follow.

Access to ATA when the DHCP service is working

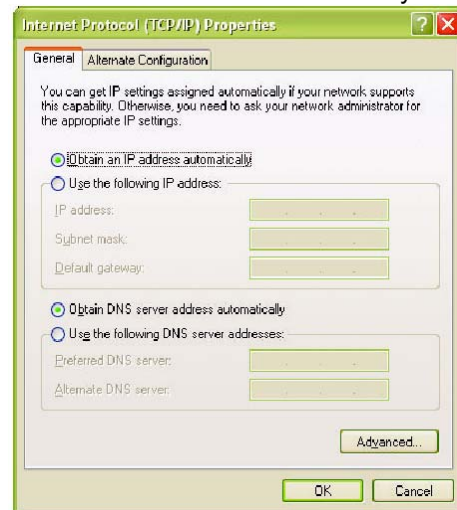
1. verify that the LAN port of your PC is configured in order to obtain an IP address automatically.

Click on “Start \ Settings\ Network connections“, double click on “Local area connections (LAN)” .

In the new window click on “Properties” and then double click on “Internet Protocol (TCP/IP)”.

Verify that the option “Obtain an IP address automatically” is activated or modify the setting and press “OK” .

At the end, you can close all the opened windows.



2. verify which IP address has been assigned to your iAN-02EX ATA.

Access your router in configuration mode and in the status information about the “LAN” or on “DHCP client” check which IP address has been assigned to your iAN-02EX ATA and write it down.

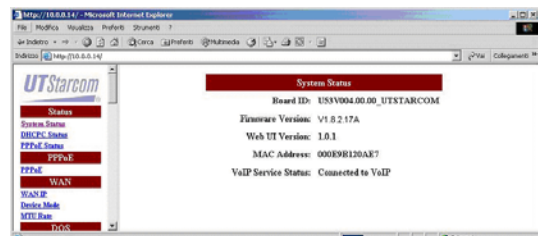
3. start your Web Browser (i.e. Internet Explorer), insert the IP address of your iAN-02EX ATA and press “GO”.

4. It will appear the window prompt for “Network Password” in which you have to insert “supervisor” as User name and your personal Password, received from Eutelia, as Password (if you didn't receive any indication, use the “Eutelia” password).

Attention! The confidentiality of these data is necessary in order to guarantee that the equipment configuration is accessible only by you. We suggest to proceed with the configuration password change and to write down the new one.



5. After few moments, the “System Status” of your iAN-02EX ATA will appear on the left of your window. Clicking on the items of the menu you can change the parameters configuration of your iAN-02EX, as explained in the following chapter.



IMPORTANT: the changes made are not going to be effective before “Save” and “Reboot” of the ATA, as indicate in the following pages.



Access to ATA when the DHCP is not working

1. configure the static IP address on the LAN port of your PC.

Click on “Start \ Settings\ Network connections“, double click on “Local area connections (LAN)” .

In the new window click on “Properties” and then double click on “Internet Protocol (TCP/IP)” .

Verify that the option “Use the following IP address” is activated, or modify the setting and fill in the following fields::

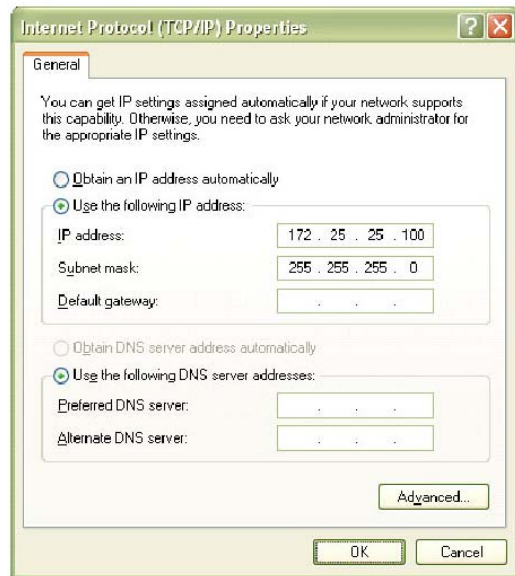
IP address: 192.168.0.x (in the example of the right site, it is used the address 172.25.25.100)

Subnet mask: 255.255.255.0

Default gateway: 192.168.0.1

For **DNS servers** should be used the IP addresses provided by the Internet Service Provider.

Once finished the configuration, press “OK” and close all the opened windows.



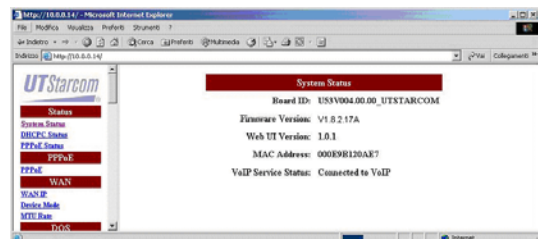
2. start your Web Browser (i.e. Internet Explorer), insert the IP address 192.168.0.1 and press “GO”.

6. It will appear the window prompt for “Network Password” in which you have to insert “supervisor” as User name and your personal Password, received from Eutelia, as Password (if you didn’t receive any indication, use the “Eutelia” password).

Attention! The confidentiality of these data is necessary in order to guarantee that the equipment configuration is accessible only by you. We suggest to proceed with the configuration password change and to write down the new one.



3. After few moments, the “System Status” of your iAN-02EX ATA will appear on the left of your window. Clicking on the items of the menu you can change the parameters configuration of your iAN-02EX, as explained in the following chapter.



IMPORTANT: the changes made are not going to be effective before “Save” and “Reboot” of the ATA, as indicate in the following pages.



ATA CONFIGURATION

Before proceeding with the configuration of your iAN-02EX ATA via WEB Browser, it is important that you have at your disposal the Eutelia's username and password for the VoIP service that you obtained during registration or those you have modified on the Eutelia's site.



- Status
- System Status
- DHCP Status
- PPPoE Status
- PPPoE
- WAN
- WAN IP
- Device Mode
- MTU Rate
- DOS
- Denial of Service
- NTP
- Gateway Mode Settings
- LAN Configuration
- Port Forwarding
- IP Filter
- DMZ
- QoS
- Qos Configuration
- DSCP
- Vlan Tag
- Mac Cloning
- Mac Cloning
- PSTN
- Switch Key
- Digit Map
- Provision
- Provision
- Syslog
- Syslog
- EMS
- EMS
- SNMP Community
- SNMP Trap Target
- VoIP
- Protocol
- MGCP
- User
- SIP
- Audio Config
- RTP
- Tone
- FAX
- STUN
- Speed Dial
- Call Features
- Digit Map
- Hook Flash
- Jitter Buffer
- Password
- Supervisor Password
- User Password
- Upgrade
- Firmware
- Configuration
- View
- Configuration
- Save
- Save Configuration
- Load Default Settings
- Load Default Keypad
- Reboot
- Reboot

WAN parameters

Click on "WAN IP" menu, then select "DHCP", insert the text "UTSTAR" and click on OK

WAN Configuration	
<input type="radio"/> Static IP Address	
IP	10 . 20 . 35 . 17
Mask	255 . 255 . 255 . 0
Gateway	10 . 20 . 35 . 254
DNS 1	10 . 20 . 35 . 1
DNS 2	10 . 20 . 35 . 2
<input checked="" type="radio"/> DHCP	
Host Name	UTSTAR
<input type="radio"/> PPPoE	
<input type="button" value="OK"/> <input type="button" value="Cancel"/>	

Note: If in your LAN are used static IP addresses it is necessary to select the option "Static IP Address" and insert the values of "IP, Mask, Gateway, etc..." to avoid conflicts on the network.

NTP parameters

Click on "NTP" menu, then insert the following values and choose OK

NTP Configuration	
NTP Server:	62 . 94 . 7 . 9
Expires:	86400
Time Zone:	+1 (Range:-13 ~ +12)
<input type="button" value="OK"/> <input type="button" value="Cancel"/>	





- Status
- System Status
- DHCP Status
- PPPoE Status
- PPPoE
- WAN
- WAN IP
- Device Mode
- MTU Rate
- DOS
- Denial of Service
- NTP
- Gateway Mode Settings
- LAN Configuration
- Port Forwarding
- IP Filter
- DMZ
- QoS
- Qos Configuration
- DSCP
- VLAN Tag
- Mac Cloning
- Mac Cloning
- PSTN
- Switch Key
- Digit Map
- Provision
- Provision
- Syslog
- Syslog
- EMS
- EMS
- SNMP Community
- SNMP Trap Target
- VoIP
- Protocol
- MGCP
- User
- SIP
- Audio Config
- RTP
- Tone
- FAX
- STUN
- Speed Dial
- Call Features
- Digit Map
- Hook Flash
- Jitter Buffer
- Password
- Supervisor Password
- User Password
- Upgrade
- Firmware
- Configuration
- View
- Configuration
- Save
- Save Configuration
- Load Default Settings
- Load Default Keypad
- Reboot
- Reboot

LAN parameters

Click on “**LAN configuration**” menu, then verify that the “**Status**” item of the DHCP Configuration is set on Disable.

LAN IP Configuration	
LAN IP:	192 . 168 . 0 . 1
LAN Mask:	255 . 255 . 255 . 0
LAN Gateway:	192 . 168 . 0 . 254
DHCP Configuration	
Status:	<input type="radio"/> Enable <input checked="" type="radio"/> Disable
Mode:	<input checked="" type="radio"/> Auto <input type="radio"/> Manual
Pool Start IP:	192 . 168 . 0 . 1
Pool End IP:	192 . 168 . 0 . 254
Default Gateway:	192 . 168 . 0 . 1
DNS 1:	192 . 168 . 0 . 1
DNS 2:	0 . 0 . 0 . 0
Domain:	utstar.com
Lease Time:	86400
<input type="button" value="OK"/> <input type="button" value="Cancel"/>	

Note: If in your LAN are used static IP addresses, it is necessary to modify the “**LAN IP Configuration**” and insert the values “**LAN IP, LAN Mask e LAN Gateway**” to avoid conflicts on the network.





- Status
- System Status
- DHCP Status
- PPPoE Status
- PPPoE
- PPPoE
- WAN
- WAN IP
- Device Mode
- MTU Rate
- DOS
- Denial of Service
- NTP
- NTP
- Gateway Mode Settings
- LAN Configuration
- Port Forwarding
- IP Filter
- DMZ
- QoS
- QoS Configuration
- DSCP
- VLAN Tag
- Mac Cloning
- Mac Cloning
- PSTN
- Switch Key
- Digit Map
- Provision
- Provision
- Syslog
- Syslog
- EMS
- EMS
- SNMP Community
- SNMP Trap Target
- VoIP
- Protocol
- MGCP
- User
- SIP
- Audio Config
- RTP
- Tone
- FAX
- STUN
- Speed Dial
- Call Features
- Digit Map
- Hook Flash
- Jitter Buffer
- Password
- Supervisor Password
- User Password
- Upgrade
- Upgrade
- Firmware
- Configuration
- View
- Configuration
- Save
- Save Configuration
- Load Default Settings
- Load Default Keypad
- Reboot
- Reboot

VoIP parameters

- click on “**User**” menu, then select **user0** and insert the values of your SIP account provided by Eutelia during registration:

Username = Telephone Number Assigned by Eutelia

Password = Password of the SIP Account

Displayname = Telephone Number Assigned by Eutelia

Login ID = Telephone Number Assigned by Eutelia and click on OK

NOTE: The **SIP account** is the subscription registered on Eutelia’s server that allows to access to the VoIP services provided by the server itself. It is composed by a **User name**, coincident with the telephone number you have been assigned and a **Password** (confidential access code) by which you can access the telephone services of Eutelia. User name and Password will be provided directly by Eutelia at the activation of the service.

VoIP User					
	User	Username	Password	Displayname	Login ID
<input checked="" type="checkbox"/>	user0:	<numero_te	*****	<numero_te	<numero_te
<input checked="" type="checkbox"/>	user1:	<numero_te	*****	<numero_te	<numero_te
			OK	Cancel	

If you have subscribed the Eutelia’s VoIP service with two telephone lines, you need to repeat the same configuration for **user1**, filling in the values of **User name** and **Password** of the second **SIP account** assigned to you.

Note that the **user0** corresponds to the physical port indicated as “**PHONE1**” on the adapter, while **user1** corresponds to “**PHONE2**” port.





- Status
- System Status
- DHCP Status
- PPPoE Status
- PPPoE
- PPPoE
- WAN
- WAN IP
- Device Mode
- MTU Rate
- DOS
- Denial of Service
- NTP
- NTP
- Gateway Mode Settings
- LAN Configuration
- Port Forwarding
- IP Filter
- DMZ
- QoS
- QoS Configuration
- DSCP
- Vlan Tag
- Mac Cloning
- Mac Cloning
- PSTN
- Switch Key
- Digit Map
- Provision
- Provision
- Syslog
- Syslog
- EMS
- EMS
- SNMP Community
- SNMP Trap Target
- VoIP
- Protocol
- MGCP
- User
- SIP
- Audio Config
- RTP
- Tone
- FAX
- STUN
- Speed Dial
- Call Features
- Digit Map
- Hook Flash
- Jitter Buffer
- Password
- Supervisor Password
- User Password
- Upgrade
- Firmware
- Configuration
- View
- Configuration
- Save
- Save Configuration
- Load Default Settings
- Load Default Keypad
- Reboot
- Reboot

2. click on **“SIP”** menu, then on **“Send#”** item choose the option Disable and click OK

VoIP SIP	
Local Port:	<input type="text" value="5060"/>
Proxy Address:	<input type="text" value="voip.eutelia.it"/>
Proxy Port:	<input type="text" value="5060"/>
Registrar Address:	<input type="text" value="voip.eutelia.it"/>
Registrar Port:	<input type="text" value="5060"/>
Outbound Proxy Address:	<input type="text" value="0"/>
Outbound Proxy Port:	<input type="text" value="5065"/>
Expires:	<input type="text" value="300"/>
SIP Domain:	<input type="text" value="voip.eutelia.it"/>
Subject:	<input type="text" value="Eut-ATA03a"/>
T1 Timer:	<input type="text" value="300"/>
DNS SRV:	<input type="radio"/> Enable <input checked="" type="radio"/> Disable
SYNC Check:	<input checked="" type="radio"/> Disable <input type="radio"/> Enable <input type="radio"/> Authentication
Send #:	<input checked="" type="radio"/> Disable <input type="radio"/> Enable
<input type="button" value="OK"/> <input type="button" value="Cancel"/>	

3. click on **“STUN”** menu, then verify the values and click OK
The “NAT Address” item will be automatically updated with the public IP address after the authentication of the ADSL access.

VoIP STUN	
NAT Address:	<input type="text"/>
Stun Server Address:	<input type="text" value="stun.voip.eutelia.it"/>
Stun Server Port:	<input type="text" value="3478"/>
Local Port:	<input type="text" value="3478"/>
Expires:	<input type="text" value="60"/>
<input type="button" value="OK"/> <input type="button" value="Cancel"/>	





- Status
- System Status
- DHCP Status
- PPPoE Status
- PPPoE
- PPPoE
- WAN
- WAN IP
- Device Mode
- MTU Rate
- DOS
- Denial of Service
- NTP
- NTP
- Gateway Mode Settings
- LAN Configuration
- Port Forwarding
- IP Filter
- DMZ
- QoS
- QoS Configuration
- DSCP
- Vlan Tag
- Mac Cloning
- Mac Cloning
- PSTN
- Switch Key
- Digit Map
- Provision
- Provision
- Syslog
- Syslog
- EMS
- EMS
- SNMP Community
- SNMP Trap Target
- VoIP
- Protocol
- MGCP
- User
- SIP
- Audio Config
- RTP
- Tone
- FAX
- STUN
- Speed Dial
- Call Features
- Digit Map
- Hook Flash
- Jitter Buffer
- Password
- Supervisor Password
- User Password
- Upgrade
- Firmware
- Configuration
- View
- Configuration
- Save
- Save Configuration
- Load Default Settings
- Load Default Keypad
- Reboot
- Reboot

Save configuration

1. click on “**Save Configuration**” menu, then select “Configuration File” and click on “**Save**”



2. after few seconds, will appear the “**Reboot**” page: click on “**Reboot**” and wait the restart of ATA.



CONFIGURATION PARAMETERS OF UTStarcom iAN-02EX ATA EQUIPMENT

Access parameters to the equipment:

IP address: verify on ADSL modem

User name: supervisor

Password: Assigned by Eutelia

LAN/WAN PARAMETERS

WAN Configuration

DHCP on, for obtaining an IP address automatically

WAN Provisioning Configuration

Status: on

Device Mode Configuration

Device Mode: Bridge

MTU Rate Setting

MTU Rate: 1460

NTP Configuration

NTP Server: 62.94.7.9

Expires: 86400

Time Zone: +1

LAN Configuration

LAN IP: 192.168.0.1

LAN Mask: 255.255.255.0

LAN Gateway: 192.168.0.254

DHCP Configuration

Status: Enable

Mode: Auto

Pool Start IP: 192.168.0.1

Pool End IP: 192.168.0.254

Default Gateway: 192.168.0.1

DNS 1: 192.168.0.1

DNS 2: 0.0.0.0

Domain: eutelia.it

Least time: 86400

VOIP PARAMETERS

VoIP Protocol: SIP (MGCP not_used)

VoIP User (User0)

Username: telephone number

Password: assigned by Eutelia or modified via WEB

Displayname: telephone number

Login Id: telephone number

VoIP User (User1) if subscribed

Username: 2° telephone number

Password: assigned by Eutelia or modified via WEB

Displayname: 2° telephone number

Login Id: 2° telephone number

VoIP SIP

Local Port: 5060

Proxy Address : voip.eutelia.it

Proxy Port : 5060

Registration address: voip.eutelia.it

Registration port: 5060

Outbound Proxy Address: 0

Outbound Proxy Port: 5065

Expires: 300

SIP Domain: voip.eutelia.it

Subject: Eut-ATA03a

VoIP Audio Config (Port 1 & 2)

Codec Rate: 30

Preferred Codec : G.729A

VAD: Enable

DTMF Tx Method: RFC-2833 Enable

VoIP RTP

RTP Port: 13456

VoIP Tone

Country Tone: Custom Specific Tone

Rx Gain (db): 0

Tx Gain (db): 0

Ring: 1000, 4000

Dial Tone: 0, 0, 450, 0

Busy Tone: 350, 350, 450, 0

Ring back Tone: 1000, 4000, 450, 0

Call Waiting tone: 4000, 4000, 450, 0

VoIP FAX

T.38 Fax: enable

T.38 Port: 49170

VoIP STUN

NAT Address: ()¹

STUN Server Address: stun.voip.eutelia.it

STUN Server Port: 3478

Local Port: 3478

Expires: 60

Speed Dial (not used)

Call Features (not used)

Port1: all services in off

Port2: all services in off

¹ The "NAT Address" item will be updated automatically with the public IP address following the authentication of the ADSL access.



Free Manuals Download Website

<http://myh66.com>

<http://usermanuals.us>

<http://www.somanuals.com>

<http://www.4manuals.cc>

<http://www.manual-lib.com>

<http://www.404manual.com>

<http://www.luxmanual.com>

<http://aubethermostatmanual.com>

Golf course search by state

<http://golfingnear.com>

Email search by domain

<http://emailbydomain.com>

Auto manuals search

<http://auto.somanuals.com>

TV manuals search

<http://tv.somanuals.com>