

45 OHM TALKBACK INTERIOR SPEAKERS



V-1060A



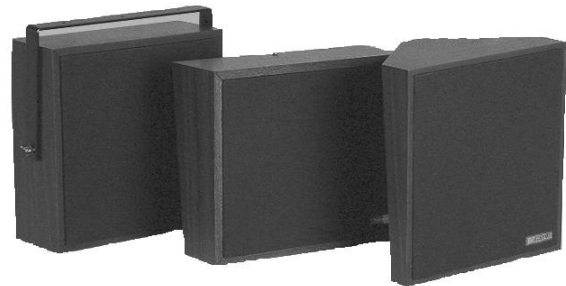
V-1060B



V-1061-W, V-1061-BK



V-1062A, V-1064A, V-1066A



V-1063A, V-1065A, V-1067A

INTRODUCTION

These instructions contain the specifications and guidelines necessary to install, operate and maintain Valcom 45 Ohm Talkback Interior Speaker Assemblies.

The 45 Ohm Talkback Interior Speaker Assemblies are for use with the Valcom "handsfree" talkback page control units and are for interior use only.

SPECIFICATIONS

Features

- 45 Ohm Impedance
- 8 Inch Speaker
- Easy Hook-up (2 connections using house cable or station wire)
- LED indicator (V-1060B only)

Dimensions/Weight

8" Ceiling Speakers:

V-1060A talkback speaker

V-1060B talkback speaker with LED

13.00" Diameter x 2.50" D

(33.02cm Diameter x 6.35cm D)

2.5 lbs. (1.13 kg)

Wall Speakers:

V-1061-BK black vinyl w/black cloth grille

V-1061-W white vinyl w/white cloth grille

9.60" H x 11.50" W x 4.20" D

(24.38cm H x 29.21cm W x 10.67cm D)

4 lbs. (1.81 kg)

V-1062A wood grain w/light brown open weave grille

V-1063A wood grain w/dark brown cloth grille

10.60" H x 9.70" W x 5.20" D

(26.92cm H x 24.64cm W x 13.21cm D)

4.0 lbs. (1.81 kg)

Corner Speakers:

- V-1064A wood grain w/light brown open weave grille
- V-1065A wood grain w/dark brown cloth grille
10.50" H x 9.50" W x 6.30" D
(26.67cm H x 24.13cm W x 16.00cm D)
3.7 lbs. (1.68 kg)

Corridor Speakers:

- V-1066A wood grain w/light brown open weave grille
- V-1067A wood grain w/dark brown cloth grille
10.30" H x 10.30" W x 4.20" D
(26.16cm H x 24.16cm W x 10.67cm D)
5.6 lbs. (2.54 kg)

Power Requirements

None, except V-1060B

V-1060B: 45mA @ -24VDC max
(for LED power)

Environment

Temperature: -20 to +55°C

Humidity: 0 to 95% non-precipitating

SYSTEM DESIGN

General

The 45 Ohm Talkback Speakers are designed to be used with the Valcom "handsfree" talkback control units. In combination with these units, they will provide both loudspeaker and talkback functions.

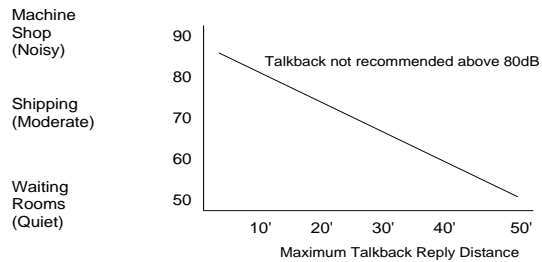
A standard Valcom talkback paging system is made up of three basic components:

1. A talkback page control unit
2. Speakers (45 Ohm)
3. A power supply

Coverage

The distance you can be away from a speaker and still have good talkback depends on the type of speaker and the ambient noise level. In a typical office environment, a wall speaker (V-1061-W, V-1061-BK, V-1062A, V-1063A, V-1064A, V-1065A, V-1066A, V-1067A) will cover approximately 600 square feet when mounted eight feet from the floor. Ceiling speaker (V-1060A, V-1060B) coverage is dependent on ceiling height; the greater the ceiling height, the larger the area covered.

TYPICAL REPLY DISTANCE CHART



IMPORTANT

The speaker is no better than your ears. If you cannot carry on a conversation at normal voice levels over the required talkback distance, then the talkback page equipment will not function satisfactorily.

Use common sense when mounting a talkback speaker. The speaker should be as close as possible to the area where talkback is desired.

It should not be mounted close to or pointed at, noise producing equipment such as fans, air conditioners, machinery or compressors.

Limitations

- Two talkback plus 40 one-way amplified speakers maximum per zone when mixing talkback and one-way paging.
- 800 feet maximum cable length to speaker from page control.
- **NOTE: Do not split pairs to speakers.**
- Do not use talkback in noisy areas (80dB or greater).

Valcom recommends that the total number of speakers per talkback zone be limited to two talkback and forty one-way self-amplified speakers. The reasoning behind this recommendation is simple. Whenever a page is made into a talkback zone, the paging party will hear audio from all of the talkback speakers in that zone. If a zone contains more than two talkback speakers, the talkback audio from the "extra" speakers will impede the quality of the talkback audio from the desired speaker. Additionally, there are limits to the number of talkback speakers that a page control will actually drive. Ideally, if a page were made into a talkback zone, all of the speakers would simply act like "one-way" speakers except for the one that is closest to the paged person.

INSTALLATION

Connections

Two conductor (four conductor for V-1060B only) twisted wire is required for the 45 Ohm talkback speakers. Standard 22 or 24 gauge station wire is acceptable. Shielded wire is not required or recommended.

Connections are as follows:

- Speaker out from page control to speaker tip
- Speaker common to speaker ring
- For 1060B only:
 - Switched -24VDC to -24VDC (LED)
 - Power Supply ground to GND (LED)

Mounting

CEILING SPEAKERS: Cut an 8.5" diameter hole in ceiling tile. After connections have been made to the speaker, attach speaker to ceiling tile using the mounting hardware provided.

NOTE: Where extra speaker support is needed, a V-9916 or V-9916M Valcom Bridge and Backbox should be used.

WALL SPEAKERS: After making the required connections, fasten a **suitable mounting screw (#10 sheet metal screw** or similar) to the wall at the desired location for mounting of the speaker. Hang the speaker on the screw using the keyhole on the speaker bracket.

CORNER SPEAKERS: After making the required connections to the speaker, use appropriate hardware such as an 8d finishing nail and hang the speaker in the corner. Typical mounting height would be 8 feet.

CORRIDOR SPEAKERS: Unscrew mounting bracket and baffle from speaker assembly. Using appropriate hardware, mount the bracket to the wall. After making the required connections, reattach the baffle to the speaker and the speaker to the mounting bracket.

TECHNICAL ASSISTANCE

When trouble is reported, verify there are no broken connections. Troubleshooting assistance is available from the factory. Call (540) 563-2000 and press 1 for Technical Support, or visit our website at <http://www.valcom.com>.

Valcom equipment is not field repairable. Valcom, Inc. maintains service facilities in Roanoke, VA. Should repairs be necessary, attach a tag to the unit clearly stating company name, address, phone number, contact person and the nature of the problem. Send the unit to:

Valcom, Inc.
Repair and Return Dept.
5614 Hollins Road
Roanoke, VA 24019-5056

TROUBLESHOOTING CHART	
SYMPTOMS	ACTIONS
<ul style="list-style-type: none"> • No sound in page mode • Low sound in page mode • Poor listening in talkback mode • No LED indication (on V-1060B) 	<ul style="list-style-type: none"> • Check tip and ring for audio at speaker. • Check tip and ring for audio at control unit. • Check volume controls at page control. • Check talkback volume control at page control. Set control where audio is clearly audible. • Check presence and polarity of LED input signal.

<p>VALCOM LIMITED WARRANTY</p> <p>Valcom, Inc. warrants its products to be free from defects in materials and workmanship under conditions of normal use and service for a period of one year from the date of shipment. The obligation under this warranty shall be limited to the replacement, repair or refund of any such defective device within the warranty period, provided that:</p> <ol style="list-style-type: none"> 1. inspection by Valcom, Inc. indicates the validity of the claim; 2. the defect is not the result of damage, misuse or negligence after the original shipment; 3. the product has not been altered in any way or repaired by others and that factory sealed units are unopened (A service charge plus parts and labor will be applied to units defaced or physically damaged); 4. freight charges for the return of products to Valcom are prepaid; 5. all units 'out of warranty' are subject to a service charge. The service charge will cover minor repairs (Major repairs will be subject to additional charges for parts and labor). <p><u>This warranty is in lieu of and excludes all other warranties, expressed or implied, and in no event shall Valcom, Inc. be liable for any anticipated profits, consequential damages, loss of time or other losses incurred by the buyer in connection with the purchase, operation or use of the product.</u></p> <p>This warranty specifically excludes damage incurred in shipment. In the event a product is received in damaged condition, the carrier should be notified immediately. Claims for such damage should be filed with the carrier involved in accordance with the F.O.B. point.</p> <p style="text-align: center;">Headquarters: Valcom, Inc. 5614 Hollins Road Roanoke, VA 24019-5056 Phone: (540) 563-2000 FAX: (540) 362-9800</p>

Free Manuals Download Website

<http://myh66.com>

<http://usermanuals.us>

<http://www.somanuals.com>

<http://www.4manuals.cc>

<http://www.manual-lib.com>

<http://www.404manual.com>

<http://www.luxmanual.com>

<http://aubethermostatmanual.com>

Golf course search by state

<http://golfingnear.com>

Email search by domain

<http://emailbydomain.com>

Auto manuals search

<http://auto.somanuals.com>

TV manuals search

<http://tv.somanuals.com>