



USB to Parallel Adapter

(CB-USB2OPL)
Quick Installation Guide

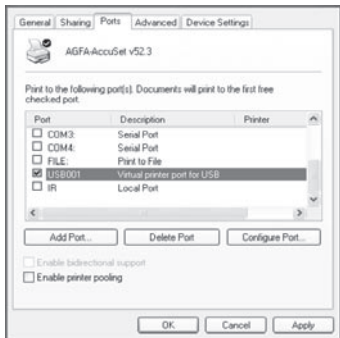
w w w . v a n t e c u s a . c o m

Setting Up the Printer Device

Follow the steps below to configure your printer to the USB to Parallel Bi-Directional Cable for communication with your computer.

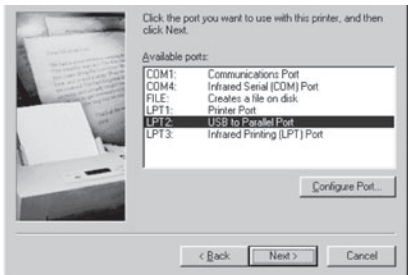
For an Installed Printer

1. If you have already installed a printer device before, click **Start > Settings > Printers (and Faxes)**. Right-click the printer that is connected using your parallel cable and click on **Properties**. The **Properties** dialog box of the installed printer will appear on your screen.
2. Click the **Ports** or **Details** tab and change the printer port to **LPT2: (USB to Parallel Port)** or **USB001 (Virtual Printer port for USB)**.



For a New Printer

1. If you do not have a printer installed yet, click on **Start > Settings > Printers (and Faxes) > Add a printer**. The **Add Printer Wizard** will start and assist you in installing a new printer device. Follow the on-screen prompts to proceed.
2. When prompted which port the printer will use, click **LPT2: (USB to Parallel Port)** or **USB001 (Virtual Printer port for USB)**.



3. Follow the succeeding instructions to complete the installation and also run **Print Test Page** to see if it can print without problem.

USB to Parallel Adapter

Model #: CB-USB20PL

www.vantecusa.com

All Registered Trademarks Belong To Their Respective Companies.

Copyright © 2007 Vantec Thermal Technologies. All Rights Reserved.

Free Manuals Download Website

<http://myh66.com>

<http://usermanuals.us>

<http://www.somanuals.com>

<http://www.4manuals.cc>

<http://www.manual-lib.com>

<http://www.404manual.com>

<http://www.luxmanual.com>

<http://aubethermostatmanual.com>

Golf course search by state

<http://golfingnear.com>

Email search by domain

<http://emailbydomain.com>

Auto manuals search

<http://auto.somanuals.com>

TV manuals search

<http://tv.somanuals.com>