

ONE YEAR LIMITED WARRANTY PROGRAM

This limited warranty program is the only one that applies to this product, and it sets forth all the responsibilities of Vector Manufacturing, regarding this product. There is no other warranty, other than those described herein. Any implied warranty of merchantability or fitness for a particular purpose on this product is limited in duration to the duration of this warranty.

This Vector Manufacturing product is warranted, to the original purchaser only, to be free of defects in materials and workmanship for one year from the date of purchase without additional charge. The warranty does not extend to subsequent purchasers or users. Manufacturer will not be responsible for any amount of damage in excess of the retail purchase price of the product under any circumstances. Incidental and consequential damages are specifically excluded from coverage under this warranty.

This product is not intended for commercial use. This warranty does not apply to damage to units from misuse or incorrect installation/connection. Misuse includes wiring or connecting to improper polarity power sources.

RETURN/REPAIR POLICY: Defective products may be returned to manufacturer. Any defective product that is returned to manufacturer within 30 days of the date of purchase will be replaced free of charge. If such a product is returned more than 30 days but less than one year from the purchase date, manufacturer will repair the unit or, at its option, replace it, free of charge.

If the unit is repaired, new or reconditioned replacement parts may be used, at manufacturer's option. A unit may be replaced with a new or reconditioned unit of the same or comparable design. The repaired or replaced unit will then be warranted under the terms of the remainder of the warranty period. The customer is responsible for the shipping charges on all returned items. During the warranty period, manufacturer will be responsible for the return shipping charges to the customer in the United States.

LIMITATIONS: This warranty does not cover accessories, such as charging adapters, bulbs, fuses and batteries, damage or defects resulting from normal wear and tear (including chips, scratches, abrasions, discoloration or fading due to usage or exposure to sunlight), accidents, damage during shipping to our service facility, alterations, unauthorized use or repair, neglect, misuse, abuse, failure to follow instructions for care and maintenance, fire, flood and Acts of God.

If your problem is not covered by this warranty, call our Technical Support Department at (954) 584-4446 or toll free at (866) 584-5504 for general repair information and charges if applicable. You may also contact us through our website at www.vectormfg.com.

STATE LAW RIGHTS: This warranty gives you specific legal rights. Some states do not allow limitations on how long an implied warranty lasts or the exclusion or limitation of incidental or consequential damages, so the exclusions or limitations stated herein may not apply. This warranty gives the purchaser specific legal rights; other rights, which vary from state to state, may apply.

TO REQUEST WARRANTY SERVICE FOR THIS PRODUCT: Contact Technical Support by telephone, fax or mail (see below). We suggest that you keep the original packaging in case you need to ship the unit. When returning a product, include your name, address, phone number, dated sales receipt (or copy) and a description of the reason for return and product serial number. After repairing or replacing the unit, we will make every effort to return it to you within four weeks.

WARRANTY ACTIVATION: Please complete Warranty Activation Card and mail to Vector Manufacturing. Enter "VEC1198POB" as Model and "TrailTracker™ Sport Lantern/Weather Radio" as Product Type. All Vector products must be registered within 30 days of purchase to activate this warranty. Mail the completed registration form, along with a copy of the original sales receipt, to:

ATTN.: CUSTOMER SERVICE
4140 SW 30th Ave., Ft. Lauderdale, FL 33312
• TOLL FREE: (866) 584-5504 • FAX: (954) 584-5556 •

WARRANTY IS NON-TRANSFERABLE.

BD022106

© 2006 VECTOR MANUFACTURING
MADE IN CHINA

POWER[®]
ON BOARD

TrailTracker™
Sport Lantern
Weather Radio
Hand-Crank Rechargeable Backup Power
AM/FM Weather Radio Plus DC Power



USER'S MANUAL
& WARRANTY INFORMATION

IMPORTANT SAFETY INFORMATION, SAVE THESE INSTRUCTIONS

TO REDUCE THE RISK OF INJURY, USER MUST READ AND UNDERSTAND THIS INSTRUCTIONAL MANUAL. THIS MANUAL CONTAINS IMPORTANT INFORMATION REGARDING THE OPERATION AND WARRANTY OF THIS PRODUCT. PLEASE RETAIN FOR FUTURE REFERENCE.

4140 S.W. 30th Ave., Ft. Lauderdale, FL 33312
Toll Free: (866) 584-5504

www.vectormfg.com

IMPORTANT SAFETY INSTRUCTIONS

WARNINGS

- 1. TO REDUCE THE RISK OF FIRE OR ELECTRICAL SHOCK, do not expose this unit to rain or moisture; and never submerge this unit in water or any other liquid.**
- 2. Other than the removable 3Ah, 12 volt battery pack and the 9 watt compact fluorescent (CFL) bulb, there are no user-replaceable parts. Do not disassemble the main body of the unit.**
- 3. DO NOT operate any of the unit's features unless unit is fully assembled.**
- 4. NEVER attempt to operate the Lantern without the bulb and housing in place; and only replace the bulb with a new 9 watt CFL bulb.**
- 5. Replace the Removable Battery Pack only with a new 3Ah, 12 volt battery pack.**

CAUTIONS

1. Use only the supplied cords/adapters for powering or recharging this unit.
2. Make sure all switches are in the OFF position before connection to a power source or load.
3. Never insert anything other than the supplied 12 Volt DC or 120 Volt AC Adapter into the unit's 12 Volt DC Power/Charging Port. Do not use any accessory not recommended or provided by the manufacturer.
4. When using the 120 Volt AC Adapter, do not use near water, such as a bathtub, sink or laundry, in a wet basement or next to a swimming pool.
5. When left unattended or unused for long periods of time, unplug any adapters and disconnect any appliances from the 12 Volt DC Accessory Outlet.
6. To prevent possible electrical damage to unit or your vehicle, always unplug the 12 Volt DC Adapter from your vehicle's accessory outlet BEFORE removing the plug from the unit.
7. Check unit periodically and discontinue use if parts or accessories are found to be damaged or defective. If defective or worn parts are found, contact Vector's Customer Service department toll-free (866) 584-5504.
8. Follow all warnings, cautions, and instructions marked on this unit.
9. Keep unit out of reach of children (whether stored or in use).

SAVE THESE INSTRUCTIONS

This device complies with part 15 of the FCC rules. Operation is subject to the following two conditions: (1) this device may not cause harmful interference, and (2) this device must accept any interference received, including interference that may cause undesired operation.

This equipment has been tested and found to comply with the limits for a Class B digital device, pursuant to part 15 of the FCC Rules. These limits are designed to provide reasonable protection against harmful interference in a residential installation. This equipment generates, uses and can radiate radio frequency energy and, if not installed and used in accordance with the instructions, may cause harmful interference to radio communications. However, there is no guarantee that interference will not occur in a particular installation. If equipment does cause harmful interference to radio or television reception, which can be determined by turning the equipment off and on, the user is encouraged to try to correct the interference by one or more of the following measures:

- Reorient or relocate the receiving antenna.
- Increase the separation between equipment and receiver.
- Connect the equipment into an outlet on a circuit different from that to which the receiver is connected.
- Consult the dealer or an experienced radio/TV technician for help.

Modifications not authorized by the manufacturer void user's authority to operate this device.

TABLE OF CONTENTS

| | |
|--|---|
| Introduction | 1 |
| Features | 1 |
| Control and Function Guide | 2 |
| Power Supply | 3 |
| Using the 120 Volt AC Adapter | 3 |
| Using the 12 Volt DC Adapter | 3 |
| Using the Dynamo Hand-Crank | 4 |
| Using Battery Power | 4 |
| Operating the Lantern | 4 |
| Operating the AM/FM Radio | 4 |
| Operating the Weather Radio | 4 |
| Operating the LED Backup Light | 5 |
| Using the 12 Volt DC Portable Power Supply | 5 |
| Care and Maintenance | 5 |
| Cleaning | 5 |
| Replacement Parts | 5 |
| 12 Volt DC Adapter Plug Fuse Replacement | 5 |
| Bulb Replacement | 6 |
| Battery Replacement/Disposal | 6 |
| Specifications | 7 |

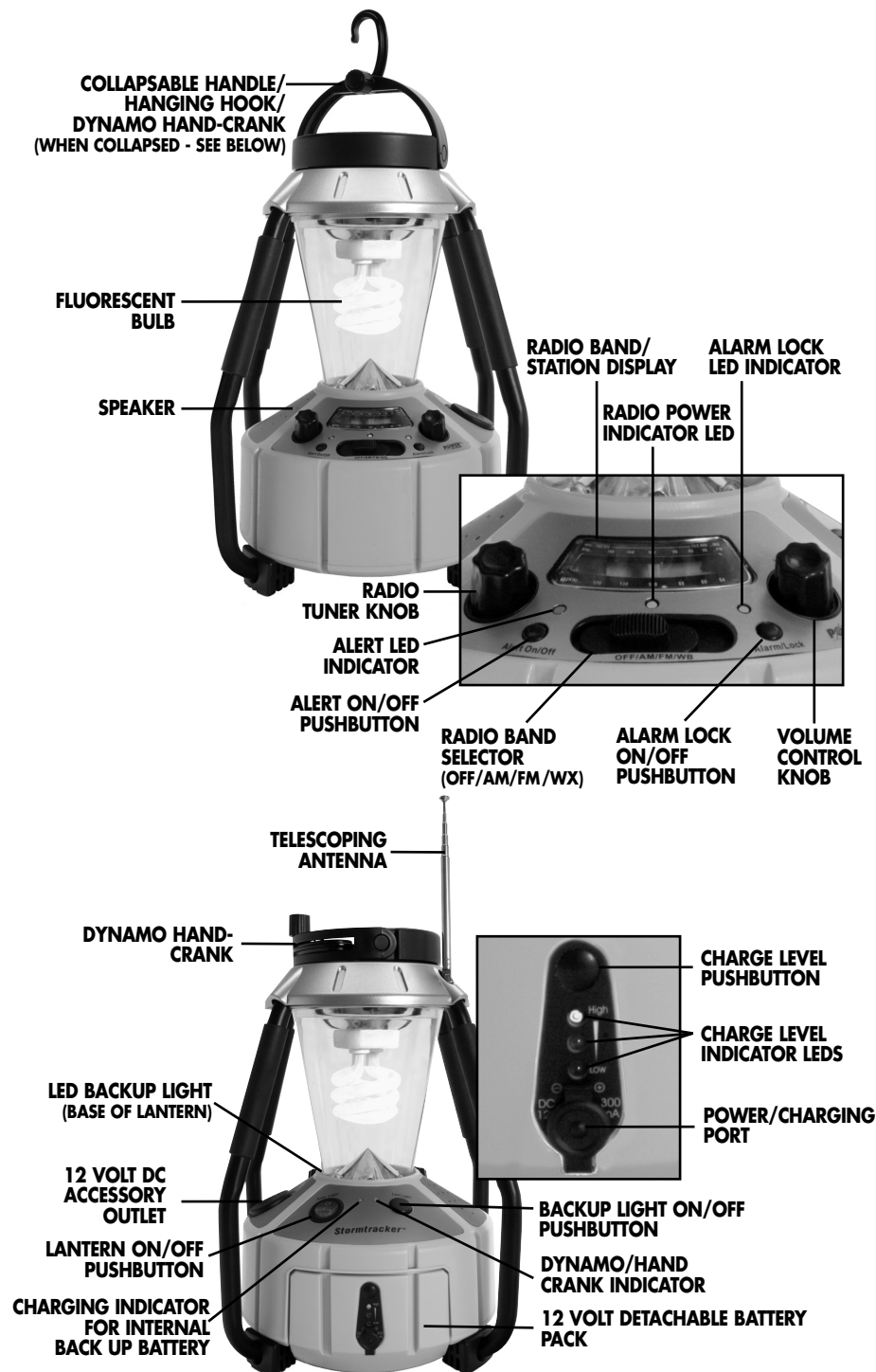
INTRODUCTION

Thank you for purchasing the **VEC1198POB TrailTracker™ Sport Lantern/Weather Radio**. Please read this guide carefully before use to ensure optimum performance and to avoid damage to the unit.

FEATURES

- Powerful fluorescent lantern
- Ultra bright 6-LED Backup Light
- Portable 12 volt DC power for mobile phone charging (only)
- AM, FM and Weather Band radio with automatic NOAA Weather/Emergency Alert System
- Telescoping antenna
- 12 volt DC and Detachable 12 Volt Battery Pack powered (DC adapter included)
- Rechargeable, internal backup Ni-MH battery
- Hand-Crank Dynamo and 120 Volt AC Adapter (included) to recharge backup batteries
- Battery Charge Level and Charging Indicators
- Collapsible Handle/Hanging Hook
- Protective cage

Control and Function Guide



POWER SUPPLY

The unit can be powered in two ways:

1. 12 volt DC power source (12 Volt DC Adapter included with the unit); or
2. Detachable 3Ah, 12 volt Battery Pack (supplied).

When no other power source is available, the rechargeable Internal Backup Battery allows the Radio and LED Backup Light to operate.

The Dynamo Hand-Crank and 120 Volt AC Adapter can be used to recharge the Internal Backup Battery.

Note: *The Lantern and 12 Volt DC Accessory Outlet can be powered by the Removable Battery and 12 Volt DC Adapter ONLY. They cannot be powered solely by the Backup Battery or the 120 Volt AC Adapter.*

⚠ CAUTIONS

Before first use, the unit's Internal Backup Battery should be charged for a full 15 hours using the 120 Volt AC Adapter.

The Internal Backup Battery is not user-accessible.

The Internal Backup Battery can only be used to power the Radio and LED Backup Light.

Using the 120 Volt AC Adapter

The 120 Volt AC Adapter recharges both the Internal Backup Battery and the Detachable 12 Volt Battery Pack.

1. Plug the 120 Volt AC Adapter's barrel connector into the Power/Charging Port on the Detachable Battery Pack.
2. Insert the Pack into the unit to charge the Internal Backup Battery.
3. Plug the 120 Volt AC Adapter's plug into any standard 120 volt AC wall outlet.
4. Charge until the green (High) LED lights.

Note: *Charge the Internal Backup Power System Battery for a full 15 hours before first use. Recharge it regularly so the unit is always ready for emergency use.*

Using the 12 Volt DC Adapter

The 12 Volt DC Adapter recharges both the Internal Backup Power System battery and the removable 12 volt battery pack; and, if no other power source is available, powers all of the unit's features.

1. Insert the gold-tipped 12 Volt DC Charging Adapter end plug into the vehicle's 12 volt DC accessory outlet.
2. Insert the silver-tipped end plug into the unit's 12 Volt DC Accessory Outlet.
3. Charge until the green (High) LED lights when the Charge Level Pushbutton on Detachable Battery Pack is pressed.

Note: *Always unplug the 12 Volt DC Adapter cord from your vehicle's accessory outlet BEFORE removing the plug from the unit.*

Using the Dynamo Hand-Crank

Collapse the Hanging Hook and Handle to release the hand-crank and press it against the unit's body to secure into position. Rotate the Dynamo Hand-Crank handle clockwise (at a rate of approximately 1.6 rotations per second) to generate power if back-up battery power is low. Turn off all functions while recharging using this method for best results.

Using Battery Power

The VEC1198POB comes with a 12 Volt DC Detachable Battery Pack that can power all of the unit's features. When the Removable Battery will no longer hold a charge, it can be replaced. See "Battery Replacement/ Disposal" on page 5.

Note: When the battery is inserted into the unit and the AC plug pin is inserted into the charging port, (even if the cube is not plugged in) the Removable Battery will charge the Internal Backup System Battery.

OPERATING THE LANTERN

The Lantern is controlled by the Lantern ON/OFF Pushbutton on the back of the unit (see the "Control and Function Guide" on page 2).

Note: When the 12 Volt DC detachable Battery Pack power runs low and alternate 12 Volt DC power cord use is unavailable, the tube Lantern will power off. The Radio and LED Backup Lights will continue to operate as long as Hand Crank backup battery source is utilized.

OPERATING THE AM/FM RADIO

See the "Control and Function Guide" on page 2 to locate referenced controls, knobs and selectors.

- Slide the AM/FM/WX Selector to the desired frequency (the AM or FM position).
- Turn the Radio Tuner Knob to select the desired station.
- Extend the built-in Radio Antenna and adjust for best reception.
- Adjust the volume using the Volume Control Knob.
- To turn the Radio OFF, simply slide the AM/FM/WX Selector to the OFF position.

OPERATING THE WEATHER RADIO

- Slide the AM/FM/WX Selector to the WX (Weather Band) position.
- With the ALERT ON/OFF Pushbutton OFF, turn the Radio Tuner Knob to select the NOAA station with the strongest signal.
- Extend the built-in Radio Antenna and adjust for best reception.
- Adjust the volume using the Volume Control Knob.
- Press the Alert Pushbutton to turn the Alert feature ON (the Alert LED will light) and press the ALARM/LOCK Pushbutton to set it in LOCK position (the Alarm Lock LED will light) for Alert standby mode. Note that the speaker is muted while Radio monitors for a hazard alert.
- To turn the Radio OFF, simply slide the AM/FM/WX Selector to the OFF position.

Notes: While in ALERT mode, the hazard alarm will sound briefly when a hazard alert is received. While in the LOCK position, the alarm SOUNDS CONTINUOUSLY WHEN THE HAZARD ALERT IS RECEIVED UNTIL THE USER TURNS IT OFF.

For the Lock Function to be available, ALERT must be engaged.

OPERATING THE LED BACKUP LIGHT

The LED Backup Light in the lantern base is controlled by the LED Light ON/OFF Pushbutton on the back of the unit. (See the "Control and Function Guide" on page 2.)

USING THE 12 VOLT DC PORTABLE POWER SUPPLY

This portable power source is also for use with 12 volt DC accessories equipped with a male accessory outlet plug that are rated up to 1 amp (generally, a cell phone charger).

1. Lift up the cover of the unit 's 12 volt DC outlet.
2. Insert the 12 volt DC plug from the appliance into the 12 Volt DC Accessory Outlet on the side of the unit (see the "Control and Function Guide" on page 2).
DO NOT EXCEED A 1 AMP LOAD.
3. Switch on the appliance and operate as usual.
4. Periodically press the battery charge level pushbutton to check battery status.

CARE AND MAINTENANCE

Cleaning

Over time, dust or fingerprints may accumulate on the Lantern glass. Clean with a soft, clean, oil-free cloth moistened with household window cleaner. Do not use alcohol based cleaners on plastic surfaces. This will eventually cause surface clouding.

Note: Never submerge this unit in water or any other liquid.

Replacement Parts

Check unit periodically and discontinue use if parts or accessories are found to be damaged or defective. To replace worn or defective parts, contact Vector Customer Service toll-free at (866) 584-5504.

12 Volt DC Adapter Plug Fuse Replacement

The fuse in the DC plug protects the charging circuit of the 12 Volt DC Adapter. If AC powering/recharging works, but DC powering/recharging does not, then the fuse may be opened (blown).

To replace the fuse:

1. Unscrew the gold end cap of the DC plug (counterclockwise).
2. Remove spring center contact and fuse.
3. Check fuse with a continuity checker.
4. If blown, locate replacement fuse with same type and rating.
5. Replace the fuse, spring, contact and end cap.
6. Screw end cap clockwise until it is finger tight – DO NOT OVER-TIGHTEN.
7. Test for proper operation of the 12 Volt DC Adapter.

Bulb Replacement

1. Unscrew the top of the Lantern (refer to Figure 1 below).
2. Remove the bulb assembly (refer to Figure 2 below).
3. Locate the metal spring in the top of the lamp (refer to Figure 3 below).
4. Grasp the metal spring and the lamp base to remove the bulb (refer to Figure 4 below).
5. Replace the bulb with a new 9 watt CFL bulb and re-assemble.

FIGURE 1



FIGURE 2



FIGURE 3

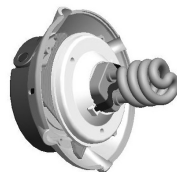
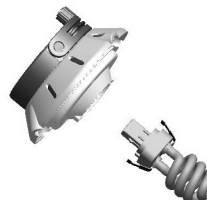


FIGURE 4



⚠ CAUTIONS

NEVER grasp the glass bulb directly. It can shatter.
DO NOT TWIST to remove the bulb; it pulls straight out of the socket.

Battery Replacement/Disposal

Battery Replacement

When it will no longer hold a charge, the **Rechargeable Battery Pack** can be replaced with a new **VEC1196BP Battery Pack**. Contact Vector Customer Service toll-free, at (866) 584-5504 to order this part.

The **Internal Backup Power System Battery** should last the life of the unit. In the event it needs replacing, it is recommended that the unit be returned to manufacturer. Contact Vector Customer Service toll-free, at (866) 584-5504.

Battery Disposal

This unit contains a sealed lead acid battery and Ni-MH battery and should be disposed of properly. For more information on recycling batteries, call toll free (800) 822-8837.

⚠ WARNING

Do not dispose of the battery in fire, as this may result in an explosion.

Before disposing of the battery, protect exposed terminals with heavy-duty electrical tape to prevent shorting (shorting can result in injury or fire).

Do not expose battery to fire or intense heat, as it may explode.



SPECIFICATIONS

| | |
|---------------------------------------|--|
| Bulb: | 9 watt compact fluorescent (CFL) |
| 12 Volt DC Adapter: | 12 volt DC |
| 120 Volt AC Adapter: | 120 volt AC (300mA, 12 volt DC output) |
| Removable Battery Pack: | 3Ah, 12 volts DC |
| Internal Backup Power System Battery: | Ni-MH 3.6V, 600 mAh |
| Radio Stations: | AM: 530-1710 kHz FM: 88-108 MHz Weather: 162.400, 162.425, 162.450, 162.475, 162.500, 162.525, and 162.550 MHz |
| Weather Radio Sensitivity: | 0.6µV@12dB SINAD 0.5µV@1050 Hz alert tone |
| Speaker: | 8 ohm, 1W |

Free Manuals Download Website

<http://myh66.com>

<http://usermanuals.us>

<http://www.somanuals.com>

<http://www.4manuals.cc>

<http://www.manual-lib.com>

<http://www.404manual.com>

<http://www.luxmanual.com>

<http://aubethermostatmanual.com>

Golf course search by state

<http://golfingnear.com>

Email search by domain

<http://emailbydomain.com>

Auto manuals search

<http://auto.somanuals.com>

TV manuals search

<http://tv.somanuals.com>