

VERIZON WIRELESS

PC5750 User's Manual



CONTENTS

1. BEFORE USING PC5750	1
1.1 About this User's Manual.....	1
1.2 Product Overview.....	1
1.3 What's Inside the Product Package.....	1
1.4 Introduction to Verizon Wireless PC5750 PC Card.....	1
1.5 Product Features.....	2
1.6 Product Handling.....	3
1.7 Configuration.....	3
2. INSTALLING PC5750	4
2.1 Precautions.....	4
2.2 Recommended System Requirements.....	4
2.3 Installing Software.....	4
2.3.1 Installation.....	4
2.3.2 Use of External Antenna.....	5
2.3.3 Warnings.....	5
2.3.4 Notes.....	5
2.3.5 Unplugging or Ejecting the Card.....	6
3. REGULATORY AND SAFETY INFORMATION	9
3.1 Regulatory Notices.....	9
3.2 Operating Conditions.....	9
3.3 Warnings and Cautions.....	9
3.4 Safety Precautions.....	10
4. GLOSSARY	12
5. SPECIFIC ABSORPTION RATES (SAR)	16

1. BEFORE USING PC5750

1.1 About this User's Manual

You will find all the information you need to install and use the PC5750 in this user's manual. Before using PC5750, you must properly install the PC5750 by closely following the installation instructions.

1.1.1 Instructions

- Install the PC5750 software before inserting the PC5750 card into your laptop. The installation software is included in the product package. Insert the CD into your CD-ROM drive. Installation may take a few minutes.
- It is highly recommended that you read the safety precautions described in this manual before using the PC5750.

1.2 Product Overview

Thank you for purchasing Verizon Wireless PC5750 PC Card. The PC5750 is a 3G wireless card that enables high-speed wireless communication from your laptop. PC5750 is simple to install and use.

1.3 What's Inside the Product Package

Following items are included in the product package. If any of the items listed below is missing, please contact the retail location where you purchased the product.

- PC5750 Wireless PC Card Modem
- Installation CD that contains software and this user's manual

1.4 Introduction to Verizon Wireless PC5750 PC Card

The Verizon Wireless PC5750 is designed for type II PC card slot, which is available in most laptop models. PC5750 can be used to access the Internet, your company's intranet, or you can use it to send and receive email. It is extremely useful when you are away from the office, on the road, or where ever a wireline Internet access is not readily available.



1.5 Product Features

- Power management: PC5750 utilizes power management and system overhead reduction functions provided by the standard 32-bit CardBus electrical interface for maximum power savings.
- Antenna design: Efficient, innovative design optimizes data transfer rate and sensitivity to network signals.
- Type II PCMCIA format that supports CardBus I/O interface.
- Supports North American PCS (1900 MHz) and Cellular (800 MHz) bands.
- Utilizes QUALCOMM MSM6800 chip set.
- Supports 3G network technologies.
- Optimized data rate: Download 450-800 kbps; upload - 300-400 kbps.
- Supports Windows 2000 and XP systems with installed host software and driver.
- Compatible with Mac OSX 10.3.9.
- Provides Verizon Wireless BroadbandAccess and NationalAccess network service.

1.6 Product Handling

- 1) Do not put any adhesive label on the PC5750 card. It may leave a sticky residue that can cause problems inside the laptop PC card slot.
- 2) PC5750 card should easily slide into the PC card slot.
Do not force the PC5750 into the slot as it may cause damage to the card and/or the slot.
- 3) Keep PC5750 in a dry and clean place.
(Storage temperature: -22°F to 149°F [- 30°C to 65°C]). Keep your card away from liquids, dust and excessive heat.

1.7 Configuration

To use the PC5750, you should install the software included in the installation CD and configure the PC5750 card. See the next section for more information on software installation and PC card configuration.

2. INSTALLING PC5750

2.1 Precautions

- 1) Do not insert the PC5750 before installing the software in laptop computer. When you complete the software installation, the system will prompt you to insert the PC5750 into the Type II PC card slot.
- 2) Once the card has been inserted into the laptop, do not remove it from your laptop without first completing the unplugging/ejection process.

2.2 Recommended System Requirements

To successfully install and use the PC5750 card in your laptop, the following system specifications are required.

Item	Required Specification
Operating system	Windows® XP / Windows® 2000 / Mac OSX 10.3.9.
Card slots	Type II PC Card slot (CardBus)
Processor	Pentium 150MHz or faster
Disk drive	CD-ROM
Memory	32 MB
Disk space	14MB
Dial-up networking	DUN bound to TCP/IP

* PC5750 is not designed for hand-held or Pocket PC. Voice service is not also supported.

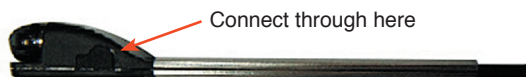
2.3 Installing Software

2.3.1 Installation

- If you install VZAccess Manager, it will install USB Driver for PC5750. You can just follow the instruction from VZAccess Manager installation.

2.3.2 Use of External Antenna Connector

- Users can use “booster antenna” independently through external antenna connector in the weak area and it is extra purchase.

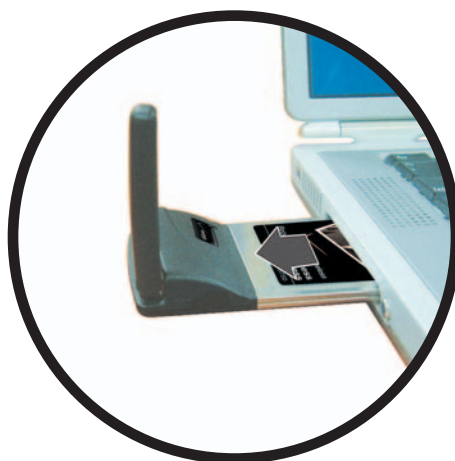
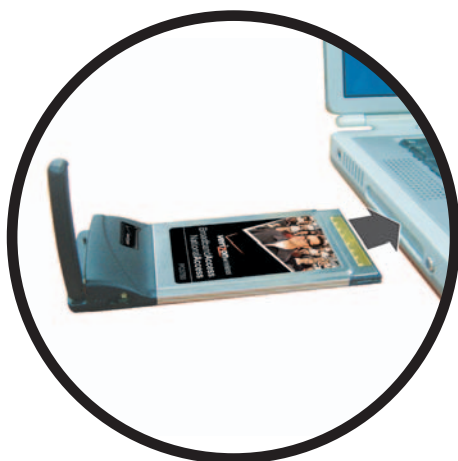


2.3.3 Warnings

- Make sure to complete the unplugging/ejection process before removing the PC5750. If you remove the card improperly, the product may be damaged.
- Before inserting the PC5750 into your laptop's PC Card slot, remove the Installation CD from the CD-ROM drive.

2.3.4 Notes

- If you have inserted the card properly, Windows will inform you of the new hardware. Wait for a while until Windows completes “Found New Hardware” task. In Windows 2000, several windows similar to “Found New Hardware” window can appear and disappear automatically. In Windows XP, several tool tips similar to the “Found New Hardware” function will appear and disappear in the system tray automatically. Once hardware detection is complete, you will be prompted to start activation.
- You hear a short beep sound each time you insert or remove the PC5750, which is quite normal. It is an audible notification that your laptop recognizes the new hardware.



2.3.5 Unplugging or Ejecting the Card

- Make sure to complete the unplug/eject process before removing the PC5750. If you remove the card improperly, the product can become damaged.
- Double click the Unplug/Eject Hardware icon in the system tray.

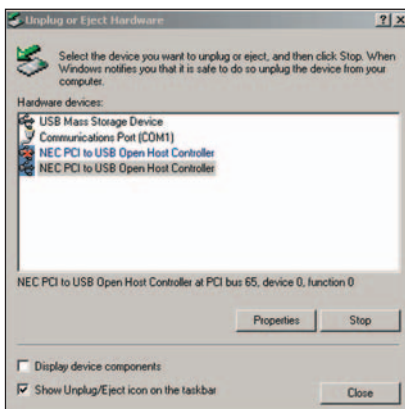


Windows 2000



Windows XP

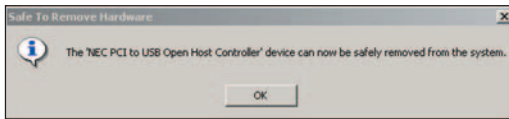
1) Unplug or Eject Hardware with Win2000



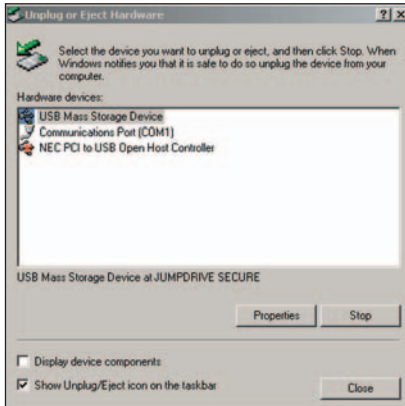
- As shown in the above figure, two “NEC PCI to USB Open Host Controller” will be displayed in the Hardware devices list of Win2000. However, one of them is disabled and marked with “x”. Select the device with no “x” mark. If you select it and click the “Stop” button, the following window will appear.



- Select one of two “NEC PCI to USB Open Host Controller” and click the [OK] button.

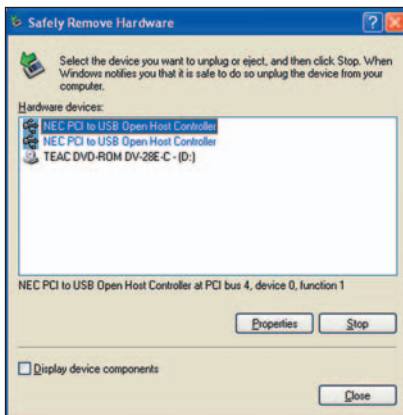


- The dialog box above will appear. Click the [OK] button.

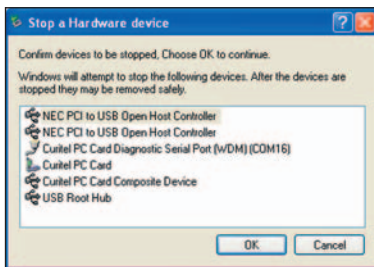


- Then, the above window will appear. Now, you can unplug PC5750.

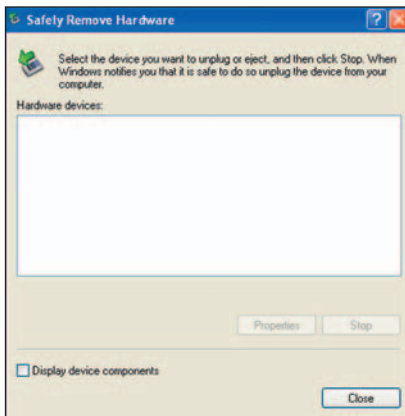
2) Unplug or Eject Hardware with Win XP



- As shown above, only one “NEC PCI to USB Open Host Controller” will be displayed in Windows XP. Select “NEC PCI to USB Open Host Controller” and click the “Stop” button.



- Then, two “NEC PCI to USB Open Host Controller” will be displayed. Select one of them and click the [OK] button.



- Click the [Close] button. Now, you can unplug PC5750.
- Now, you can remove the PC5750 from your laptop. When removing the PC5750, always grip the either sides of the card rather than the top and bottom of the card. Gripping the top and bottom of the cards and pulling the card and put pressure on the antenna and cause damage. Use the Card Ejector tool on your laptop, if it is available.



When Inserting and removing the PC Card, grip both sides.



Do not handle or remove the PC Card by pulling on the antenna.

3. REGULATORY AND SAFETY INFORMATION

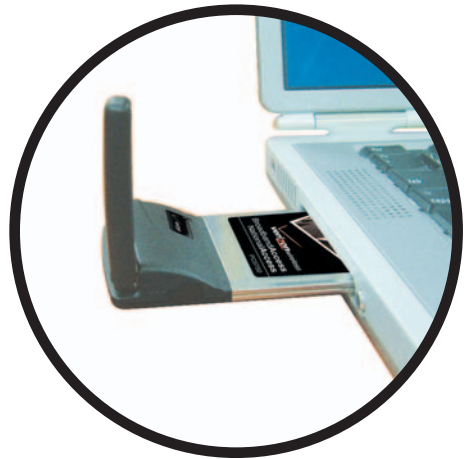
3.1 Regulatory Notices

PC5750 complies with Parts 15, 22, and 24 of the FCC rules. It has been tested with the typical laptop computer with the side loading PCMCIA bay.

This PC card must not be co-located or operated in conjunction with any other antenna or transmitter. If you use this PC card in any other configuration, the FCC RF Exposure compliance limit can be exceeded.

3.2 Operating Conditions

- 1) This device may not cause harmful interference, and this device must accept any interference received, including interference that may cause undesirable operations.
- 2) The manufacturer stipulates that the antenna should be more than 1.5 cm (0.60") from by-standers and 1.0cm (0.39") from the user.



3.3 Warnings and Cautions

- 1) Modifying or changing this PC card without express authorization can nullify compliance with RF exposure guidelines.
- 2) This PC card has been tested and found to comply with the limits pursuant to Part 15, 22, and 24 of the FCC Rules. These limits are designed to provide reasonable protection against harmful interference when appropriately installed. This PC card generates, uses, and can radiate radio frequency and, if not installed and used according to the instructions provided, it may cause harmful interference to radio communication. However, there is no guarantee that interference will not occur in any particular installation.

- 3) If this PC card does cause harmful interference with radio or television signals (determine this by turning the PC card off and on), attempt to correct the interference by trying one or more of the following:
 - Reorient or relocate the antenna.
 - Increase the separation between the PC card and receiver.
 - Connect the PC card into an outlet on a circuit different from that to which the receiver is connected.
 - Consult the dealer or an experienced radio/TV technician for help.
- 4) This PC card does not exceed the Class B limits for radio noise emissions from digital apparatus as set out in the interference causing equipment standard entitled “Digital Apparatus”, ICES-003 of the Department of Communications.
- 5) If you have purchased this product under a United States Government contract, it shall be subject to restrictions as set forth in subparagraph (C)(1)(ii) of Defense Federal Acquisitions Regulations (DFARs) Section 252.227-7013 for Department of Defense contracts, and as set forth in Federal Acquisitions Regulations (FARs) Section 52.227-19 for civilian agency contracts or any successor regulations. If further government regulations apply, it is your responsibility to ensure compliance with such regulations.

3.4 Safety Precautions

- 1) Data transmission and reception cannot be guaranteed because of the nature of wireless communications. Data can be delayed, corrupted or lost during transmission. Even though it is quite rare that significant data delay or loss occurs if the PC card is used in a normal manner, this PC card should not be used in cases that data transmission or reception failure could result in damage of any kind to the user or another party, including but not limited to personal injury, death or loss of personal property. Utstarcom bears no responsibility for damages or losses of any kind resulting from delays or errors in data transmission using the PC card, or for failure of the PC card to transmit or receive such data.

- 2) Do not use this PC card in areas where blasting is in progress, where explosive atmospheres may be present, near medical equipment, life support equipment, or any equipment which may be susceptible to any form of radio interference. Turn of this PC card in these areas, since it can transmit signals that could interfere with this equipment.
- 3) Do not use this PC card in any aircraft whether the aircraft is on the ground or in flight. Make sure to turn off this PC card in aircraft. If used in aircraft, it can transmit signals that could interfere with various aircraft systems.
- 4) Do not use this PC card while driving a car, since it can distract driver's driving. In some area, using the communication device while driving a car is illegal.

* **WARNING:** This product contains a chemical known to the State of California to cause cancer.

* **WARNING:** This product contains a chemical known to the State of California to cause birth defects or other reproductive harm."

4. GLOSSARY

NationalAccess

Analog Coverage

An area where analog service is available. Analog phones usually indicate signal strength on an indicator in the phone's display when receiving an analog signal.

Browser

The software that allows you to view the Internet; contains navigator commands such as forward and back; such as Netscape, Microsoft Explorer. A Web browser in your computer requests HTML files from Web servers; takes you to the Internet sites you wish to visit, by linking your computer's IP address to a site's IP address.

COM PORT (communications port)

A connector for a communications interface, usually, a serial port.

Data

Information kept in databases, on an intranet, on the Internet, etc.

Data-Capable Digital Phone

A digital phone capable of processing data calls. Data calls may include accessing the Internet by launching the browser within the phone or using the phone as a wireless modem to access the Internet, or sending and receiving email and faxes while the phone is connected to the serial port of a PC or PDA.

Digital Coverage

An area where digital service is available. Digital capable phones indicate a "D" on the phone's display when the phone is receiving a digital signal.

Driver

Software that controls a device.

Inactivity Time-Out

A stoppage in a connection, which usually occurs after a period of time elapses, without activity. Time-out settings are usually determined by the network.

Internet

A cooperatively run, globally distributed collection of computer networks that exchange information via a common set of rules for exchanging data (Transfer Control Protocol/Internet Protocol or TCP/IP). Intranet An intranet is a web site created by a business, which posts its own company information in a secure part of the Internet that only employees or other authorized users can reach. Intranets are generally protected by firewalls.

Kbps

Kilobits per second.

Kilobyte (KB)

1024 bits (Approximately 1/2 page of plain text)

Modem

Hardware that translates and transmits data over wire-line or wireless.

Package Minutes

Package minutes are those minutes included in the cost of a monthly service plan. Once the packaged minutes have been exhausted, additional airtime charges apply. Please refer to Plans and Pricing for more information, details and offers in your area.

Packet Switching

Packet-switching messages are divided into packets or pieces before transmission over one or more routes and are reassembled at their destination.

PC-Card (PCMCIA)

The PCMCIA card is about the size of a credit card developed for devices, such as modems, that can be plugged into notebook computers.

PDA

Personal Digital Assistant, usually a small hand-held computer used for notes, appointments and communications.

POP3 e-mail

Protocol used by ISP's mail servers to manage e-mail for subscribers. E-mail clients such as Microsoft Outlook support POP3.

Proxy Settings

A specific I.P. address that allows access to a secured enterprise network. The proxy settings provide directions to a computer so that it can locate an address and access information and services, which exist at that location.

Search Engine

A program that receives a user's search request, compares it to the entries in the index, and returns results to help the user find relevant information.

Serial Port

A connector on a computer used to connect peripherals, which communicate using a serial protocol.

Serial/Data Cable

A wire that connects two serial ports carrying data to one another.

Transmission Speed

The rate at which data is sent over a communications line, usually measured in kilobits (kbps).

Tri-Mode Digital Phone

A mobile phone capable of functioning in Analog, CDMA, and PCS service areas. The digital/web-enabled features of the phone are only functional in CDMA and PCS service areas.

URL

Universal Resource Locator is a unique address that directs you to a specific web site - typically starting with "WWW".

USB Cable

A wire connecting two USB ports carrying data to one another.

USB Port

A connector on a computer to connect peripherals using USB (Universal Serial Bus) protocol.

Web Enabled

Feature on a digital handset that supports the browser function so content web sites can be accessed.

Mobile Web

Alerts

Customized text messages sent to your wireless device, on subjects you choose, such as weather, horoscopes, news & sports. Personalized from the Alerts tab located on <http://vzw.msn.com>.

Back

Soft key that returns to the previous screen.

Bookmarks

Feature that allows you to store wireless websites for future access.

Browser

Software that allows you to view Internet content on a web-enabled device.

Customer Support

Check the balance of your bill (not available in all markets) or contact a Verizon Wireless customer service representative.

HDML (Hyper Device Markup Language)

Computer language format used to create wireless websites.

HTML (Hyper Text Markup Language)

Computer language format used to create desktop websites.

Microsoft.net Passport

An online service that makes it possible for you to use your e-mail address and a single password to sign in-securely-to <http://vzw.msn.com> and at a growing number of participating websites.

OK

Soft key that selects the current menu choice and advances to the next screen.

Portal

A website accessed by desktop or wireless device that provides a wide selection of information from a single place.

Roaming

Making or receiving calls (or using wireless data services) outside your home airtime rate area. Additional fees may apply, depending on your calling plan.

Soft Key

Left and right keys on your phone that vary in function, for menu selections.

Sync

The ability to share information (i.e., calendar, contact or email) between your wireless device and desktop and other applications. Not available in all markets.

Time Out

After 30 seconds of inactivity on your wireless device browser, the Internet connection is disconnected and is considered to have "timed out." The browser session will be reinitiated when you make another menu selection, which causes a "sending" or "receiving" message on your screen.

WML (Wireless Markup Language)

Computer language format used to create websites that can be viewed on a wireless telephone or device.

5. SPECIFIC ABSORPTION RATES (SAR)

Maximum: SAR 0.33 W/kg CDMA Body
SAR 0.122 W/kg PCS CDMA Body

<CDMA Body SAR>

Frequency		SAR (mW/g)
Mhz	Chan	
824.70	1013 (Low)	0.33
835.89	0363 (Mid)	0.312
848.31	0777 (High)	0.23

<PCS CDMA Body SAR>

Frequency		SAR (mW/g)
Mhz	Chan	
1851.25	0025 (Low)	0.089
1880.00	0600 (Mid)	0.122
1908.75	1175 (High)	0.111

Free Manuals Download Website

<http://myh66.com>

<http://usermanuals.us>

<http://www.somanuals.com>

<http://www.4manuals.cc>

<http://www.manual-lib.com>

<http://www.404manual.com>

<http://www.luxmanual.com>

<http://aubethermostatmanual.com>

Golf course search by state

<http://golfingnear.com>

Email search by domain

<http://emailbydomain.com>

Auto manuals search

<http://auto.somanuals.com>

TV manuals search

<http://tv.somanuals.com>