


## Quick Start Guide Model: 1228-2

Your new Victor calculator is versatile and loaded with features. Complete directions, explanation of key functions and user examples can be found in the enclosed instruction manual. Quick Start will guide you through the important steps prior to operation.

**STEP 1** Register your product online at [www.victortech.com](http://www.victortech.com) or call (800) 628-2420. The advantages of taking a few moments to register your product are:

1. Verifies the date of purchase in the event of a warranty claim.
2. If you need support, your registration helps Victor find your product quickly and provide the assistance you need.
3. Online registration gives you the option to save a copy of your registration for your personal records.

### STEP 2 Load the Paper

1. Turn ON calculator and set the slide switch P/NP to the P position.
2. Place paper holder into position.
3. Install the paper roll on the holder.
4. Insert the paper through the printer slot (located on the back of calculator).
5. Press the feed key  to feed paper to desired length.

### STEP 3 Set the Time/Date

1. Press TIME and then press and hold SET key until the first digit of the month flashes.
2. Enter the Date (MM/DD/YYYY).
3. Press SET to confirm the date.
4. Press C/CE, TIME, TIME and then press and hold SET until 1<sup>st</sup> digit flashes.
5. Enter the time using the number keys.
6. Press AM/PM to toggle morning or afternoon and press SET to confirm the time.

The following parts and accessories are available for your Victor1228-2, and may be purchased from your local supply dealer or from [www.victortech.com](http://www.victortech.com) or call (800) 628-2420.

IR 40T Ink Roller



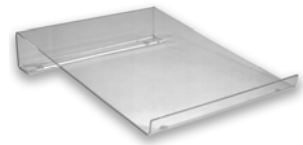
7050 Paper Rolls



140 Sticky Add Roll



LS-125 Calculator Stand



## TROUBLESHOOTING

1. Plug machine directly into wall outlet (do not use power strip).
2. Turn ON and set slide switch P/NP to the P position.
3. Use a paper clip to depress the RESET button; located on the back of machine.
4. Listen for activation noise.
5. Turn the machine right side up.
6. Test the machine.

If this procedure has not successfully resolved your problem or you have any questions regarding the operation of your Victor calculator, contact Victor's Customer Care Center at (800) 628-2420 or E-mail [victor@victortech.com](mailto:victor@victortech.com) for further assistance.

## Free Manuals Download Website

<http://myh66.com>

<http://usermanuals.us>

<http://www.somanuals.com>

<http://www.4manuals.cc>

<http://www.manual-lib.com>

<http://www.404manual.com>

<http://www.luxmanual.com>

<http://aubethermostatmanual.com>

Golf course search by state

<http://golfingnear.com>

Email search by domain

<http://emailbydomain.com>

Auto manuals search

<http://auto.somanuals.com>

TV manuals search

<http://tv.somanuals.com>