



Project: _____
 Location: _____
 Item #: _____
 Quantity: _____

Dual Temp Refrigerator/Freezers (36" Wide Model)

RFS MODELS — RFS-36-S7

Stainless steel exterior and interior.

RFSA MODELS — RFSA-36-S7

Stainless steel exterior.
Aluminum interior.

Remote Models Available



RFS-36-S7

Note: Single section model cooling coils are contained within ceiling mounted low profile housings.

Standard Features (all models)

- Digital Thermometer/Battery Back-up
- Adjustable Stainless Steel Legs
- Energy Saver Switches
- Stainless Steel Case Front, Doors and Sides
- Lifetime Heavy-Duty Cam Lift Hinges
- Adjustable Wire Shelves
- Lifetime Safety Grip Handles
- Self-Closing Doors with Safety Stops
- Energy Saving Thermal Breaker Strips
- Heavy-Duty Cylinder Locks
- One Piece Self-Adjusting Magnetic Door Gaskets
- High Impact Stainless Steel Interior Door Liner
- Plasticized Fin Coil
- Environmentally Friendly R-134a Refrigerant
- Environmentally Friendly R-404A Refrigerant
- Condensate Automatically Evaporated
- Automatic Defrost

Optional Features and Accessories

- Change Door Swing
- Adjustable Stainless Steel Wire Shelves
- 5" Diameter Heavy Duty Swivel Casters with Brakes
- Stainless Steel Case Back
- Remote Models

Cabinet:

Victory's dual temperature model provides storage of both refrigerated and frozen foods within a single cabinet. An insulated partition between the cabinet sections ensures temperature integrity of each product zone. The cabinet front and doors are constructed of heavy gauge polished stainless steel to maintain an attractive appearance after years of heavy use. Foamed-in-place polyurethane insulation throughout the cabinet and doors ensures the ultimate in energy efficiency.

Doors:

The self-closing doors are securely mounted on rugged cam-lift hinges, which have a lifetime guarantee. Each door has a heavy-duty cylinder lock and self-adjusting magnetic gasket to prevent the cold air from escaping. Humidity control wires located around the door jamb prevent condensation from forming on the cabinet front and are concealed by a high impact, non-conductive

thermal breaker strip. The interior door liner is constructed of durable stainless steel material, which resists denting and scratching and is easy to clean. Each safety grip handle is guaranteed for life.

Shelving:

The heavy-duty wire shelves are adjustable in one-inch increments.

Refrigeration System:

The model is equipped with two self-contained independent refrigeration systems mounted on top of the cabinet. The air circulating fans and the forced convection-cooling coil are contained in a stainless steel housing in product zone. All condensate water is disposed of automatically by the energy efficient condensate evaporator, no plumbing is required.

Approvals:



Victory Refrigeration specification sheets are available online at www.victory-refrig.com.

CHARACTERISTICS	ONE SECTION Reach-In
Width, Overall	36
Depth, Overall (incl. handles)	37 7/8
Height, Overall (incl. adj. legs)	84
Depth, Door(s) Open 90°	67 7/8
Clear Door Width	30 1/2
Clear Full Door Height	—
Clear Half Door Height	25 3/8
Capacity Net (cubic feet), Refrigerator	11.6
Capacity Net (cubic feet), Freezer	11.6
No. of Full Doors	—
No. of Half Doors	2
No. of Shelves	3
Shelf Area (square feet)	21.2
Cabinet Voltage	115/60/1
Feed Wires, Refrigerator	2
Feed Wires, Freezer	2
Condensing Unit Voltage, Refrigerator	115/60/1
Condensing Unit Voltage, Freezer	115/60/1
Condensing Unit Size (HP), Refrigerator	1/4
Condensing Unit Size (HP), Freezer	1/3
Total Amperes, Refrigerator	15.6
Total Amperes, Freezer	15.6

Crated dim. & wts.	Ht.	Width	Depth	Cu.Ft.	S	SA
One Section	87	44 3/4	44 3/4	94.1	645	630

Approx. Pass-Thru weights, add 15%

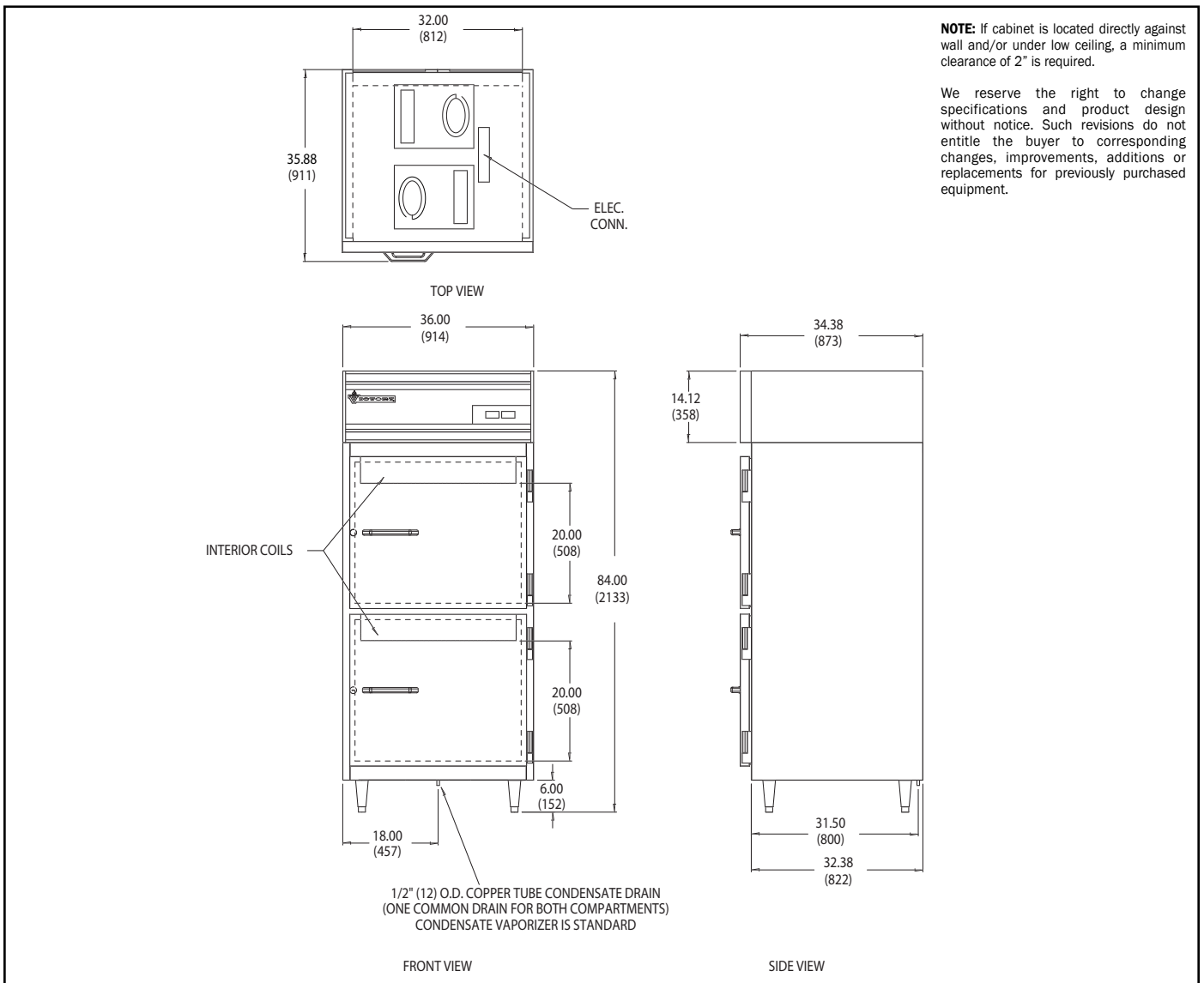
FOR REMOTE MODELS— Substitute an "R" for the "S" in suffix. For example: Model RFS-1D-S7 (self-contained) would be RFS-1D-R7 remote cabinet. Air circulating fans, expansion valve and plasticized coil are provided. Condensing units not supplied. The following units are recommended with 1/2" O.D. Suction line, 1/4" O.D. Liquid line.

REMOTE REFRIGERATION

	Cond. Unit	BTUH	Cabinet	Amps*
One Section				
Refrigerator	1/4 H.P.	2030	115/60/1	6.3
Freezer	1/3 H.P.	1318	115/60/1	6.3

*(In Defrost)

Dimensional tolerance ± 1/4" Metric dimensions (MM)



Continuous product development may necessitate specification changes and design without notice.



Victory participates in the KCL CADalog, the most current source of CAD symbols for foodservice designers worldwide. Symbols include standard equipment in plan, side, front and 3-D views, layered for FEDA/FCSI recommended guidelines.

Free Manuals Download Website

<http://myh66.com>

<http://usermanuals.us>

<http://www.somanuals.com>

<http://www.4manuals.cc>

<http://www.manual-lib.com>

<http://www.404manual.com>

<http://www.luxmanual.com>

<http://aubethermostatmanual.com>

Golf course search by state

<http://golfingnear.com>

Email search by domain

<http://emailbydomain.com>

Auto manuals search

<http://auto.somanuals.com>

TV manuals search

<http://tv.somanuals.com>