



Project: _____
 Location: _____
 Item #: _____
 Quantity: _____

Undercounter Refrigerator with Stainless Steel Top and Backsplash

One Section Model with Door

UR-27-SBS

Case front, doors, top and ends of stainless steel.
 One piece ABS interior liner with stainless steel coil housing.

One Section Model with Two Drawers

URD-27-SBS

Case front, drawers, top and ends of stainless steel.
 One piece ABS interior liner with stainless steel coil housing.



Standard Features

- Interior Thermometer
- Easy Closing Door with One Piece Magnetic Gasket
- Door can be Rehinged in the Field
- One Piece Heavy-Duty Door Handle
- Heavy-Duty Vinyl Coated Steel Shelves
- High Density Foamed-in-Place Polyurethane Insulation
- High Impact One Piece ABS Interior Liner
- Plasticized Fin Coil
- Automatic Condensate Evaporator
- Energy Efficient Refrigeration System with Automatic Defrost
- Environmentally Friendly R-134a Refrigerant
- Cord and Plug Attached
- Adjustable Legs
- Completely Enclosed Cabinet Back

Optional Features and Accessories

- Door Lock
- Change Door Swing
- Stainless Steel Back
- 5" Diameter Heavy-Duty Swivel Casters with Brakes
- 3" Diameter Heavy-Duty Swivel Casters with Brakes
- Adjustable Stainless Steel Legs

Standard Features

- Interior Thermometer
- Each Drawer has One 12" x 20" x 6" Stainless Steel Pan (Supplied)
- Stainless Steel Drawer Front
- Heavy-Duty Stainless Steel Slides and Ball Bearings
- High Density Foamed-in-Place Polyurethane Insulation
- High Impact One Piece ABS Interior Liner
- Plasticized Fin Coil
- Automatic Condensate Evaporator
- Energy Efficient Refrigeration System with Automatic Defrost
- Environmentally Friendly R-134a Refrigerant
- Cord and Plug Attached
- Adjustable Legs
- Completely Enclosed Cabinet Back

Optional Features and Accessories

- Stainless Steel Back
- 5" Diameter Heavy-Duty Swivel Casters with Brakes
- 3" Diameter Heavy-Duty Swivel Casters with Brakes
- Adjustable Stainless Steel Legs

Approvals:

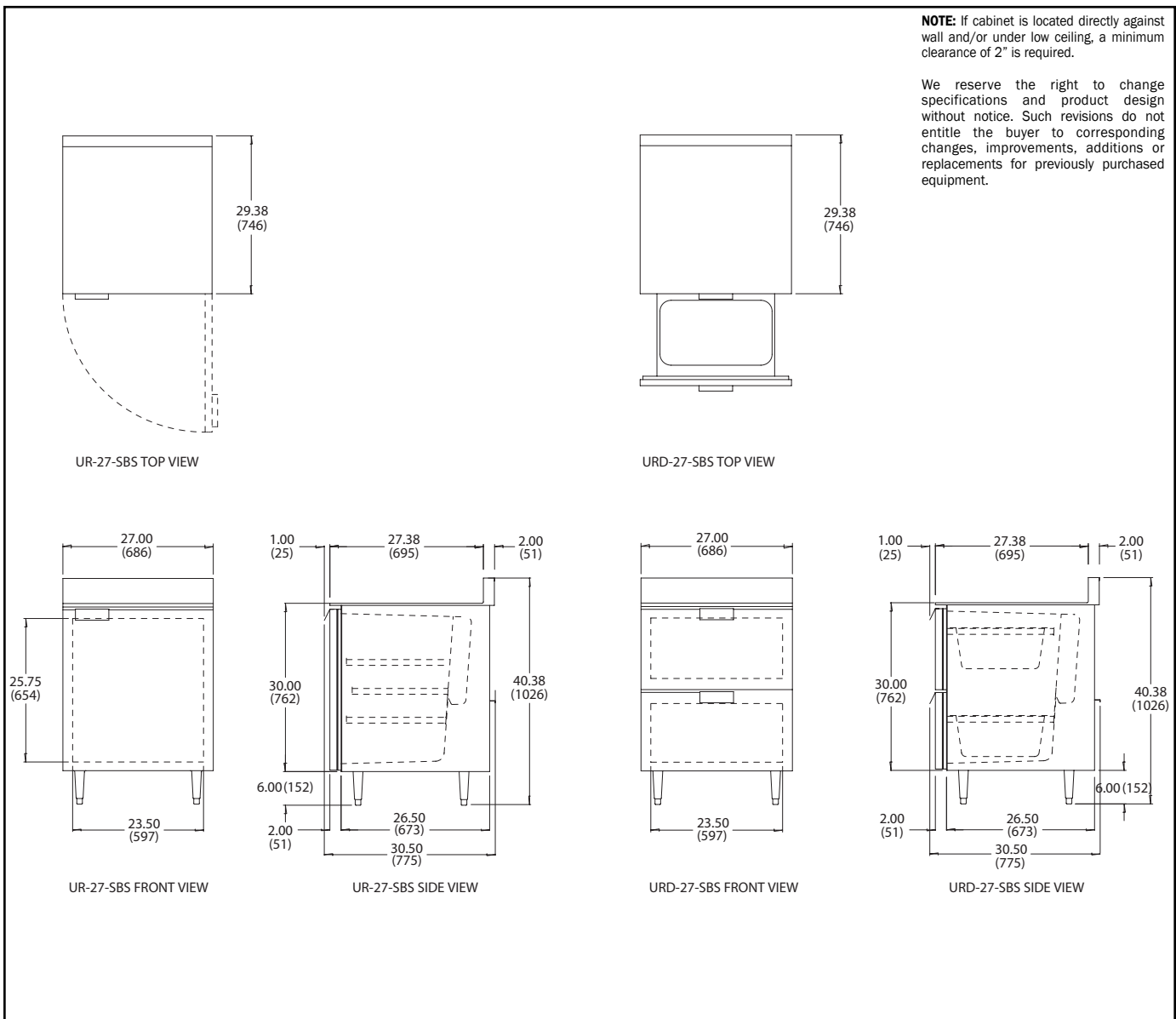


Victory Refrigeration specification sheets are available online at www.victory-refrig.com.

CHARACTERISTICS	UR-27-SBS	URD-27-SBS
Width, Overall	27	27
Depth, Overall (incl. handles)	30 1/2	30 1/2
Height, Overall (incl. adj. legs)	40 1/2	40 1/2
Depth, Open Door 90°	55 3/8	—
Clear Door Opening, Width	23 1/2	—
Clear Full Door Opening, Height	25 3/4	—
Depth, Drawer Open	—	46 1/2
Clear Drawer Width	—	23 1/2
Capacity Net (cubic feet)	7.0	7.0
No. of Full Doors	1	—
No. of Shelves	2	—
Shelf Area (square feet)	7.2	—
Each Drawer Pan (cubic feet)	—	15
Cabinet Voltage	115/60/1	115/60/1
Feed Wires	2	2
Condensing Unit Voltage	115/60/1	115/60/1
Condensing Unit Size (HP)	1/5	1/5
Total Amperes	5.7	5.7

Crated dim. & wts.	Ht.	Width	Depth	Cu. Ft.	Lbs.
UR-27-SBS	42 1/2	34	33	27.6	157
URD-27-SBS	42 1/2	34	33	27.6	197

Dimensional tolerance ± 1/4" Metric dimensions (MM)



Continuous product development may necessitate specification changes and design without notice.



Victory participates in the KCL CADalog, the most current source of CAD symbols for foodservice designers worldwide. Symbols include standard equipment in plan, side, front and 3-D views, layered for FEDTA/FCSI recommended guidelines.

Free Manuals Download Website

<http://myh66.com>

<http://usermanuals.us>

<http://www.somanuals.com>

<http://www.4manuals.cc>

<http://www.manual-lib.com>

<http://www.404manual.com>

<http://www.luxmanual.com>

<http://aubethermostatmanual.com>

Golf course search by state

<http://golfingnear.com>

Email search by domain

<http://emailbydomain.com>

Auto manuals search

<http://auto.somanuals.com>

TV manuals search

<http://tv.somanuals.com>