



**15"/ 17"/ 19" TFT-LCD MONITOR
WITH
VIDEO INPUTS**

V151/ V172/ V191 Video Series

USER'S MANUAL

www.viewera.com

Rev. 1.0

CONTENTS

<u>1. Introduction</u>	Page 2
Product Description	Page 2
Package Contents	Page 2
Product Features	Page 2
Screen Cleaning Techniques	Page 3
Additional	Page 3
<u>2. Control Functions</u>	Page 5
Function Selection	Page 6
Function Adjustments.....	Page 7
<u>3. Installation</u>	Page 8
<u>4. Display Modes</u>	Page 9
<u>5. Signal Connector Pin-Outs</u>	Page 10
<u>6. Power Saving Features</u>	Page 11
<u>7. Product Specifications</u>	Page 12
<u>8. Dead Pixel Policy</u>	Page 15
<u>9. Warranty and Customer Service</u>	Page 15
<u>10. Windows Setup</u>	Page 16
<u>11. Trouble Shooting</u>	Page 18

1. Introduction

Product Description

Congratulations on your purchase of the ViewEra **V151/ V172/ V191 video series** LCD monitor. It incorporates high quality display into a small light-weighted module. It has power-saving capabilities and emits no radiation. You will certainly benefit from this monitor in lots of ways; to name some of them:

comfort, safety, space-saving and environmental protection.

These LCD monitors incorporates **15"/ 17"/ 19"** color active matrix thin-film-transistor (TFT) liquid crystal display to provide superior display performance. For 15" monitor, the maximum resolution is **XGA 1024 x 768**. For 17" and 19" monitors, the maximum resolution is **SXGA 1280 x 1024**. They all are ideal for displaying complex graphics and high definition images. Their outstanding capabilities include stereo audio, high image quality with S-video, standard RCA composite video/audio and OSD (On Screen Display) controls.

Package Contents

Included with your LCD monitor as following items :

- **15"/ 17"/ 19"** TFT LCD monitor
- 15 pin D-sub VGA signal cable
- Audio cable
- AC power cord
- AC/DC power adapter
- User's manual

Product Features

- High brightness, high contrast ratio and wide viewing angle
- Wall mountable with VESA 75 bracket
- Built-in speakers with volume control
- Power management system conforms to VESA DPMS standard
- Advanced OSD control for picture quality adjustment
- Slim bezel design

Screen Cleaning Techniques

1. Gently clean the screen with a clean camel hair lens brush, or a soft, clean, lint-free cloth, to remove dust and other particles that can scratch the screen.
2. Do not apply pressure to the screen surface when wiping it clean.
3. Do not pour or spray any liquid directly onto the screen or casing. Chemical cleaners have been reported to damage the screen or case of the LCD monitor.

Additional

Read all of these instructions and save them for later use.

Follow all warnings and instructions on the product.

1. Product

- Do not block the vent holes in the case.
- Do not insert sharp objects or spill liquid into the LCD monitor through cabinet slots. They may cause accident fire, electric shock or failure.
- Disconnect the power plug from the AC outlet if you will not use it for an extended period of time.
- Do not attempt to service this product yourself, as opening or removing covers may expose you to dangerous voltage points or other risks.
- Do not touch the screen directly with your fingers. You may damage the screen, and oil from your skin is difficult to remove.
- Do not apply pressure to screen. The LCD panel is very delicate.

2. Power

- Use the type of power indicated on label.

3. Plugs

- Do not remove any of the prongs of the monitor's three-pronged power plug.
- Disconnect the power plug from the AC outlet under following conditions :
 - If you will not use it for an extended period time.
 - When the power cord or plug is damaged or frayed.

- If the product does not operate normally when the operating instructions are followed. Adjust only those controls that are covered by the operating instructions. Improper adjustment of other controls may result in damage and will often require extensive work by a qualified technician.
- If the product exhibits a distinct change in performance, service may be required.

4. **Power and extension cords**

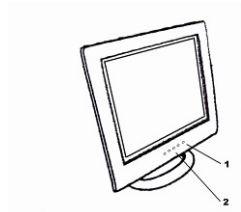
- Do not allow anything to rest on the power cord.
- Do not locate this product where persons will walk over the cord.
- Use the proper power cord with correct attachment plug type. If the power source is 120V AC, use a power cord that has UL and C-UL approvals. If the power source is a 240V AC supply, use the tandem (T blade) type attachment plug with ground conductor power cord that meets the respective European country's safety regulations, such as VDE for Germany.
- Do not over load wall outlets or power cords. Ensure that the total of all units plugged into the wall outlet does not exceed 10 amperes.
- Ensure that the total ampere ratings on all units plugged into the extension cord is not above the cord's rating.
- If the power supply cord, which came with your monitor, is to be connected to the PC instead of the wall outlet, Use an UL/TUV approved computers with receptacle rated 100~240V AC, 50/60Hz, 1.0A (minimum) only.

5. **Environment**

- Place the monitor on a flat and leveled surface.
- Place the monitor in a well-ventilated place.
- Keep the monitor away from overly hot, cold or humid places, places directly under sunlight, dusty surroundings, equipment that generate strong magnetic fields.
- Please adjust the frequency to **60** Hz after setting up the LCD monitor.
- Then push the OSD menu button and use the auto adjustment function to find the best mode of your computer.

2. Control Functions

The monitor digital control functions are located on the front panel. They are shown in the figure below and described in the following paragraphs.



1. Power switch with indicator LED
2. Function keys

Function Selection

1. Press the knob “1” to show the OSD menu. Then use the “△” and “▽” to select a function. Press the knob “2” to close the OSD menu.
2. With the knob “△” and “▽”, you can adjust the speaker volume on the monitor.
 - When you press the “▽”, the speakers are mute. Press the “▽” one more time, and then the speakers are active.
 - When you press the knob “△”, the speaker volume OSD is shown. You can increase or decrease the volume by pressing the “△” and “▽”.
3. You can hold the knob “2” for more than 3 second to adjust the image quality automatically.

The OSD menu will close automatically after 3-10 seconds without operation and saves any changes you have made.

Function Adjustments

1. Signal Select

VGA - Select the image signal coming from the VGA cable.

V - Select the image signal coming from the CVBS-Video or S-Video.

Exit - Close the signal select OSD menu.

Note: You can press “2” button to quickly switch signal sources among VGA, CVBS (composite video), and S-video.

2. Video

- Brightness - Adjust the luminance level of the image.
- Contrast - Adjust the difference in luminance between light and dark areas of the image.
- Black Level - Adjust the black level of the image.
- Exit - Close the video OSD menu.

3. Audio

- Volume - Adjust the speaker volume
 - Exit - Exit the audio OSD menu.
- Note: You can press “1” button repeatedly to mute or enable the monitor speakers.

4. Color

- Color Temperature
 - User - Adjust the R.G.B. gain level.
 - 6500K - Select the color temperature of 6500°K.
 - 9300K - Select the color temperature of 9300°K.
 - Exit - Close the color temperature OSD menu.
- Exit - Close the color OSD menu.

5. Image

Auto Tune - Adjust geometry of the image automatically.

H. Width - Adjust the horizontal sync size of signal.

H. Phase - Adjust the horizontal sync phase of signal.

H. Position - Adjust the horizontal position of the image.

V. Position - Adjust the vertical position of the image.

Exit - Close the Image OSD menu.

Note: Image function is only available for VGA and Video signal input.

6. Language - Set the language of the OSD windows.

7. Tools

OSD Control

OSD Timer - Setting the OSD menu display time.

OSD H. Position - Adjust the horizontal position of the OSD menu.

OSD V. Position - Adjust the vertical position of the OSD menu.

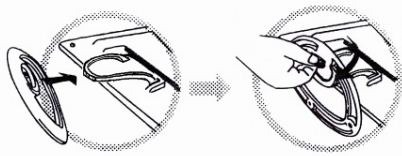
Exit - Close the OSD Control OSD menu.

Recall - Recall the factory default setting.

Sharpness - Adjust the picture more clearly.

Exit - Close the Tools OSD menu.

8. Exit - Close the OSD menu.



Open the shipping carton and check the package contents.

If any items are missing or damaged, contact us immediately.

The package should include the following items:

- 15"/ 17"/ 19" TFT-LCD monitor
- Power cord
- AC/DC power adapter
- VGA cable
- Audio cable
- User's manual

Installing the Base

Follow these steps to install the base:

1. Turn the monitor down.
2. Assembly the base to the arm with screw.
3. Tighten the screw with a coin.

Installing the Monitor

This monitor is equipped with an auto sensing DC power adapter for voltage ranges of 100-240VAC, 60/50Hz. Follow these steps to install the monitor:

1. Before you connect the cables, make sure that the monitor and the system unit power switches are off.
2. Plug one end of the VGA cable or DVI cable to the monitor and the other end to the video signal connector at the rear of the system. Tighten the two screws on the cable connector.
3. Connect the AC/DC power cord to the DC jack.
4. Connect the power cable.

4. Display Modes

Micro-controller Features

The micro-controller automatically detects the video board installed in your system. When you turn on the monitor, the micro-controller checks the display mode memory stored in the user setting area of the video board, and then the factory presetting area. It then adjusts to the proper display mode.

The micro-controller has the memory capacity to store different display modes, including timing formats and display-settings. This memory capacity is divided into two parts: the user setting area and the factory presetting area.

User Setting Area

The user settings by the user on the last display mode maintain in the memory of the micro-controller. You can change the settings or add a nonstandard mode.

The micro-controller always detects and displays the last mode stored in the user setting area when the monitor is turned on.

Factory Presetting Area

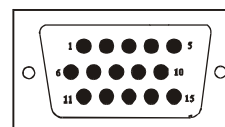
There are some preferred display modes preset in the micro-controller. These display modes are preset at the factory and include the most popular display modes currently available. The micro-controller searches for a proper display mode in this area if it fails to find a proper display mode in the user setting area.

	MODE	Resolution (Dots*lines)	Horizontal Freq.(KHz)	Vertical Freq.(Hz)	Remark
1.	VGA	640×350	31.5	70	Non-interlaced
2.	VGA	720×400	31.5	70	Non-interlaced
3.	VGA	640×480	31.5	60	Non-interlaced
4.	VESA/75	640×480	37.5	75	Non-interlaced
5.	VESA/60	800×600	37.9	60	Non-interlaced
6.	VESA/75	800×600	46.9	75	Non-interlaced
7.	VESA/60	1024×768	48.4	60	Non-interlaced
8.	VESA/70	1024×768	56.5	70	Non-interlaced
9.	VESA/75	1024×768	60.0	75	Non-interlaced
10.	VESA/60	1280×1024	64.0	60	Non-interlaced
11.	VESA/75	1280×1024	80.0	75	

5. Signal Connector Pin-outs

To connect VGA, 8514A or IBM-compatible graphics adapters, use a 15 pin mini D-type male connector.

15-pin Mini D-type Male Connector					
Pin Assignment					
1	Red Video	6	Red Ground	11	Ground
2	Green Video	7	Green Ground	12	Serial Data/I/O
3	Blue Video	8	Blue Ground	13	H. Sync
4	Ground	9	No Connection	14	V. Sync
5	No Connection	10	Sync Ground	15	Serial Clock Input



6. Power Saving Features

When the power saving is active, the power indicator LED will be from Green Light to Amber. The power saving feature complies with these VESA power saving modes:

Mode	H. Sync.	V. Sync.	LED	Power Consumption
Normal	On	On	Green	< 50 Watts
Stand-by	Off	On	Amber	< 15 Watts
Suspend	On	Off	Amber	< 15 Watts
Off	Off	Off	Amber	< 5 Watts

The monitor uses the H. Sync and V. Sync signals to determine the operation mode to enter.

The monitor power-saving feature automatically turns off H. Sync and V. Sync if there is no input from the system for a certain period of time. To use this feature, you need a green PC that is compliant with the VESA power saving feature or a software utility to detect system input such as keyboard or mouse.

Time Settings

Time settings are adjusted from the system unit by software. To fulfill the requirements in the NUTEK specification 803299/94 the total time from indicated inactivity to Power Saving position A2 (VESA OFF) must not be set more than 70 minutes. We recommend you switch off the monitor when you do not intend to use it for a while.

7. Product Specifications

7.1 V151 series product specifications

Features	Model	V151 Series
Panel Type: Screen Size: Pixel Pitch: Brightness: Contrast Ratio: Response Time: Viewing Angle(H / V) Max. Resolution: Display Color		Active TFT-LCD 15" diagonal 0.297 (W) x 0.297 (H) mm Typical: 250 cd/m ² (Min: 250) Typical: 500:1 (Min: 400:1) Typical: 16 ms (Max.:25) Typical: 140° / 120° (Min: 140° / 120°) 1024 (W) x 768 (H) 16.7 M
Video Input		Analog:15-pin, D-sub connector x1 S-Video x1, RCA composite x1 Digital: DVI connector (optional)
Display Area		12 (W) x 9 (H) inch [304.8 (W) x 228.6 (H) mm]
Power Supply Input voltage: Output rating:		100-240V /60-50Hz 12V DC, 3.0A
Power Consumption		25 watts (max.), 3 watts (standby)
Audio		3 watts x 2 built-in speakers RCA composite x1
Frequency		Horizontal:30-60 KHz; Vertical: 50-75 Hz
Dimensions(set size)		14.8 (H) x 14.96 (W) x 5.5 (D) inch [375(H) x 380(W) x 140(D) mm]
Safety & EMI		UL, CUL, FCC-B, CB, CE, TUV/GS
Weight		N.W.: 6.6 lbs (3.0 Kgs) G.W.: 8.0 lbs (3.6 Kgs)
Operating Conditions		5°C – 35°C; 20%-80% RH
Storage Conditions:		-20°C – 60°C; 10% -90% RH
Wall mountable		Yes, VESA 75 bracket

The typical value of brightness, contrast ratio, response time and viewing angle is subject to change without notice. For the latest update, please refer to ViewEra's product page on the website.

7.2 V172 series product specifications

Features	Model	V172 Series
Panel Type: Screen Size: Pixel Pitch: Brightness: Contrast Ratio: Response Time: Viewing Angle(H / V) Max. Resolution: Display Color		Active TFT-LCD 17" diagonal 0.264 (W) x 0.264 (H) mm Typical: 300 cd/m ² (Min: 250) Typical: 500:1 (Min: 400:1) Typical: 12 ms (Max: 16) Typical: 140° / 130° (Min: 140° / 130°) 1280 (W) x 1024 (H) 16.7 M
Video Input		Analog:15-pin, D-sub connector S-video x1, RCA composite x1
Display Area		13.3 (W) x 10.6 (H) inch [338 (W) x 270 (H) mm]
Power Supply Input voltage: Output rating:		100-240V /60-50Hz 12V DC, 4.2A
Power Consumption		40 watts (max.), 3 watts (standby)
Audio		3 watts x 2 built-in speakers RCA composite x1
Frequency		Horizontal:30-82KHz; Vertical: 50-75Hz
Dimensions(set size)		14.8 (H) x 14.96 (W) x 5.5 (D) inch [375(H) x 380(W) x 140(D) mm]
Safety & EMI		UL, CUL, FCC-B, CB, CE, TUV/GS
Weight		N.W.: 12 lbs (5.5Kgs) G.W.: 16 lbs (7.0Kgs)
Operating Conditions		5°C – 35°C; 20%-80% RH
Storage Conditions:		-20°C – 60°C; 10%-90% RH
Wall mountable		Yes, VESA 75 bracket

The typical value of brightness, contrast ratio, response time and viewing angle is subject to change without notice. For the latest update, please refer to ViewEra's product page on the website.

7.3 V191 series product specifications

Features	Model	V191 Series
Panel Type: Size: Pixel Pitch: Brightness: Contrast Ratio: Response Time: Viewing Angle(H / V) Max. Resolution: Display Color		Active TFT-LCD 19" diagonal 0.294 (W) ×0.294 (H) mm Typical: 250 cd/m ² (Min: 250) Typical: 800:1 (Min: 500:1) Typical: 8 ms (Max: 16) Typical: 170°/170° (Min: 140° / 140°) 1280 (W) x 1024 (H) 16.7M
Video Input		Analog:15-pin, D-sub connector S-video x1, RCA composite x1
Display Area		14.8 (W) x 11.8 (H) inch [376 (W) x 301 (H) mm]
Power Supply Input voltage: Output rating:		100-240V /60-50Hz 12V DC, 4.2A
Power Consumption		50 watts (maximum), 3 watts (standby)
Audio		3 watts x 2 built-in speakers RCA composite x1
Frequency		Horizontal:30-82KHz; Vertical: 50-75Hz
Dimensions(set size)		16.7 (W) x 16.7 (H) x 6.9 (D) inch [425 (W) x 425 (H) x 175 (D) mm]
Safety & EMI		UL, CUL, FCC-B, CB, CE, TUV/GS
Weight		N.W.: 13.2 lbs (6.0Kgs) G.W.: 16.5 lbs (7.5Kgs)
Operating Conditions		5°C – 35°C; 20%-80% RH
Storage Conditions:		-20°C – 60°C; 10%-90% RH
Wall mountable		Yes, VESA 75 bracket

The optical specifications (brightness, contrast ratio, response time and viewing angle) depend on the LCD panel used, subject to change without notice. For the latest update, please refer to ViewEra's product page on the website.

8. Dead Pixel Policy

Dead pixels on the TFT LCD panel are sometimes inevitable. ViewEra guarantees that the monitor will be replaced if the number of dead pixels on our monitor exceeds 5 pixels.

9. Warranty & Customer Service

Warranty

ViewEra warrants the **V151/ V172/ V191 series** TFT-LCD monitors for 1 year for LCD panel, for 3 years for parts and labor. For detail information, please refer to our website.

([http:// www.viewera.com/warranty.htm](http://www.viewera.com/warranty.htm))

Customer Service

Contact your ViewEra retailer or ViewEra for after sale service.

You may contact ViewEra Customer Support:

1. By Mail: 328 Paseo Tesoro, Walnut, CA 91789
2. By Telephone: (909)595-3748
3. By Fax: (909)595-3526
4. By E-mail: support@viewera.com

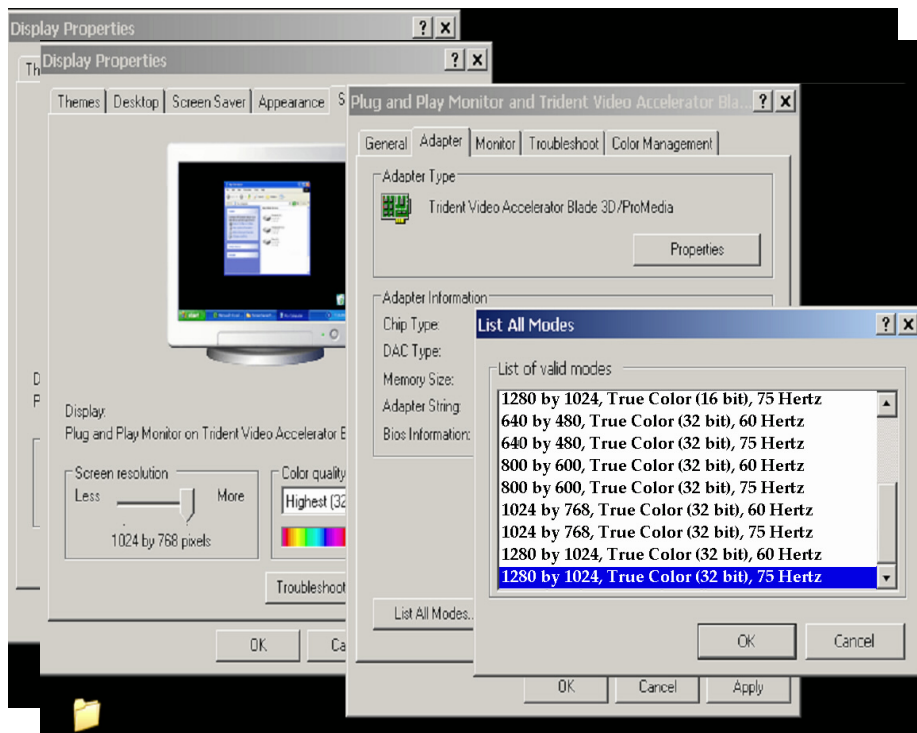
The business hours are 9:00 am – 6:00 pm PST, Mon – Fri.

10. Windows setup

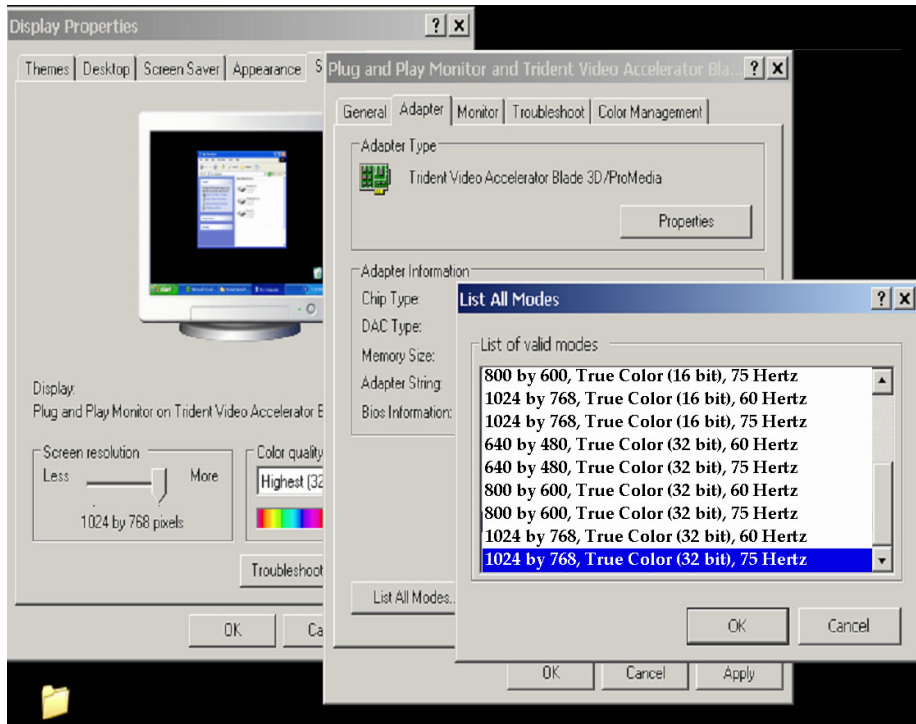
For the best display quality, please set the monitor type in Windows.

Control Panel > Display > Settings > Advanced > List All Modes

For 1280 ×1024, please set to “SXGA 1280 × 1024 @ 60Hz”



For 1024 × 768, please set to “XGA 1024 × 768 @ 60Hz”



11. Trouble Shooting

1) Power on but no picture

- Make sure the VGA cable is tightly connected from the video output connector on the video card to the video input connector on the monitor.
- Make sure you are using the standard power adapter coming with the monitor.
- Check your video card if the driver is correctly installed. If there is no video signal from the video card, “NO INPUT SIGNAL” will show on the screen.

2) Wrong or abnormal colors

- If any color (red, green, or blue) is missing, check video cable to make sure it is securely connected. Loose pins in the cable connector can cause a bad connection.

3) The text and icon look blurry

- LCD monitor has a native resolution which pixels are produced by cells in fixed positions. When a resolution different from the native resolution is chosen, the LCD monitor uses various interpolation methods to achieve the pseudo resolution. To achieve the optimum viewing quality, choose the native resolution of the panel is recommended.
- Use “Auto Tuning” function to adjust image quality on the OSD menu or you can hold button 2 for 3 seconds to do auto tuning.

4) Display position is incorrect

- Use “Auto Tuning” function to adjust image position on the OSD menu or you can hold button 2 for 3 seconds to do auto tuning.

5) Speakers have no sound

- Make sure the audio cable is tightly connected from the audio output jack on the PC to the audio input jack on the monitor.

6) Residue image

→ If an image remains on the screen for an extended period of time, it may be imprinted in the screen and leave a residue image. It is characteristic of liquid crystal and is not malfunction or deterioration of the liquid crystal. The residue image will disappear after a period of time. It is recommended to set up the screen saver for your LCD monitor.

7) Out of Rang

→ The first thing you need to check is the screen resolution. Usually “Out of Range” is caused by improper resolution setting. You can recover the proper screen resolution as the following steps for Windows: (Assumed that the optimal resolution and frequency setting is 1280x1024@ 60Hz.)

Boot the computer into **VGA Mode** (F8) [repeatedly] at startup.

Go to “**Control Panel**”, double click on “**Display**”, click on the **SETTINGS** TAB, and click on the **ADVANCED** button.

Then Click on the **Adapter** TAB, click “**List All Modes**” and change the screen resolution to 1280x1024. (You can select 16 bit or 32 bit color which depends on your video card capability.)

Select “**1280 by 1024, High Color (16 bit), Default Refresh**”

Click on the “**OK**” and “**APPLY**”.

After clicking the **APPLY** button, a message will be displayed “Your desktop has been reconfigured. Do you want to keep these settings?”

Click “**Yes**” and “**OK**”. Then click “OK” on the Display Properties window.

Restart your PC

After you restart, go back to “List All Modes” to adjust your screen refresh rate to 60 Hertz.

The “Out of Range” may happen if you switch monitor A to monitor B for your PC. Whenever you change the monitor for your PC, your PC may detect it as a new hardware and automatically install a proper driver for the monitor. So, you will have both monitor A and monitor B drivers on your PC. Sometimes the two monitor drivers may conflict each other and cause “Out of Range”. You can resolve “Out of Range” by uninstalling both monitor drivers and reboot your PC. The Windows will automatically detect the new hardware and install a proper driver for the monitor. Here is a quick way to uninstall the monitor drivers:

Right click on “**My Computer**”, select “**Properties**” and click on “**Hardware**”. Click on “**Device Manager**”, select “**Monitor**” and click on “+” in front of “Monitor”. Then you can see one of the monitor drivers called “**Plug and Play Monitor**”. A quick way is to uninstall all the monitor drivers and then let Windows automatically detect the new hardware. (Right click on the monitor driver and select “Uninstall”).

Restart your PC

Free Manuals Download Website

<http://myh66.com>

<http://usermanuals.us>

<http://www.somanuals.com>

<http://www.4manuals.cc>

<http://www.manual-lib.com>

<http://www.404manual.com>

<http://www.luxmanual.com>

<http://aubethermostatmanual.com>

Golf course search by state

<http://golfingnear.com>

Email search by domain

<http://emailbydomain.com>

Auto manuals search

<http://auto.somanuals.com>

TV manuals search

<http://tv.somanuals.com>