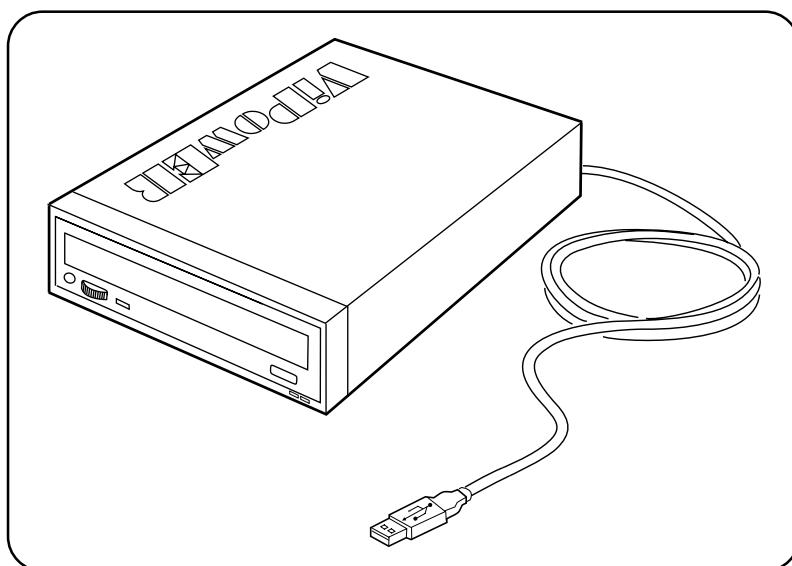


VPM-6228H

Ture Metal USB 2.0 External Enclosure with 3 ports HUB

for 5.25-inch CD/DVD ROM, CD/DVD-RW,
DVD+RW and 3.5-inch HDD



User's Manual

VIPower

We are your DataBridge™

<http://www.vipower.com>



PROPRIETARY NOTICE

We make no warranty of any kind with regards to this material, including, but not limited to, the implied warranties of merchantability and fitness for a particular purpose. We shall not be liable for errors contained herein or for incidental or consequential damages in connection with the furnishing, performance, or use of this material.

This document contains proprietary information which is protected by copyright. All rights are reserved. No part of this document may be photocopied, reproduced, or translated to another language without our written consent. The information contained in this document is subject to change without notice.



TRADEMARKS

MS-DOS, Windows, Windows 98SE/NT/2000/Me/XP are trademarks of Microsoft Corporation.

PC is a trademark of International Business Machines Corporation.

Macintosh and Mac are trademarks of Apple Computer, Inc.

All of the third-party brands and names are the property of their respective owners.

VPM-6228H -Ture Metal USB 2.0 External Enclosure with 3 ports HUB for 5.25-inch CD/DVD ROM, CD/DVD-RW, DVD+RW and 3.5-inch HDD User's Manual

Rev. 1.0 Date: October 27, 2004

© Copyright 2004 ViPowER, Inc. All rights reserved.





Content

1. Features and Specifications	4
1-1 VPM-6228H external enclosure	4
1-2 USB 2.0 External Drive	6
1-3 Package Checklist.....	7
2. Hardware	8
2-1 LED indicators located on the front panel	8
2-2 Connectors located on Back panel	8
2-3 Installation	9
2-4 Connecting the VPM-6228H to a Computer	18
3. Drivers Installation	20
3-1 Windows 98SE	20
3-2 Windows Me/2000/XP	24
3-3 Mac OS	25
3-4 Linux 2.4	25
4. Use The USB 2.0 External Enclosure VPM-6228H	25
4-1 Connect the USB 2.0 External Enclosure VPM-6228H Computer	25
4-2 Disconnect the USB 2.0 External Enclosure VPM-6228H from Computer	27
5. Partition the External USB 2.0 Hard Disk	29
5-1 Partition Under Windows 98/ME	29
5-2 Partition under Windows 2000/XP	31

1. Features and Specifications


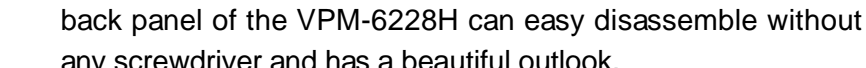
1-1 VPM-6228H external enclosure

Features

1. USB 2.0/1.1 compliant with data transfer rate up to 480Mbit/sec.
2. Worldwide Patented 3 in one integrated USB 2.0 HUB for easy USB expansions.
3. Compatible with all 5.25" devices and 3.5" HDD.
4. One special High-power USB port for USB 2.5" HDD, slim CD/DVD-ROM, slim CD/DVD±RW, and USB Reader, etc..
5. Native hardware Plug-n-Play supports under Windows Me/2000/XP, Mac OS 9.1X and above and Linux Kernel 2.4 and above, no software driver required (driver for Windows 98SE).
6. Stackable design for multiple connection between external USB devices (USB HDD, Card reader etc.) and extra USB expansions.
7. Complete Metal case design maximizes and aides heat dissipation.

Specifications:

1. Complete Metal case design maximizes and aides heat dissipation.
2. Compatible with all 5.25" devices and 3.5" HDD.
3. One special High-power USB port for USB 2.5" HDD, slim CD/DVD-ROM, slim CD/DVD±RW, and USB Reader, etc..
4. Worldwide Patented 3 in one integrated USB 2.0 HUB for easy USB expansions.
5. Stackable design for multiple connection between external USB devices (USB HDD, Card reader etc.) and extra USB expansions.
6. USB 2.0/1.1 compliant with data transfer rate up to 480Mbit/sec.

- 
7. USB 2.0 / IDE compliant:
 - a) Integrated USB transceiver.
 - b) High speed (480 Mbit) and full speed (12 Mbit) support.
 - c) USB suspend / resume, remote wake up support.
 8. Supports ATA PIO modes 0-4 : ATA interface operation mode is automatically selected during device initialization or manually programmed with configuration data.
 9. Supports UDMA modes 0-4 of operation.
 10. Supports 48-bit LBA (large HDD), when the VPM-6228H connects with one 3.5" HDD installed in the Mobile Rack.
 11. Native hardware Plug-n-Play supports under Windows Me/2000/XP, Mac OS 9.1X and above and Linux Kernel 2.4 and above, no software driver required (driver for Windows 98SE).
 12. LED indicator displayed power and drive activity are located on the front panel of the VPM-6228H external enclosure.
 13. One Screw secure the top enclosure cover and locate on the back panel of the VPM-6228H can easy disassemble without any screwdriver and has a beautiful outlook.
 14. Provide the diagram "Eye-Pattern" fo proving the best transmission signal. In other words "The VPM-6228H has the best high-quality".
- 

Operating Systems

- Windows Me/2000/XP – no drivers required (software drivers for Windows 98SE included)
- Mac OS 9.0 or later – no drivers required
- Linux 2.4 – no drivers required



1-2 USB 2.0 External Drive

The USB 2.0 External Drive is a portable compact storage drive that incorporates the USB 2.0 (Universal Serial Bus 2.0) high speed interface. The USB 2.0 External Drive provides a fast and easy way to add more storage space to your computer.

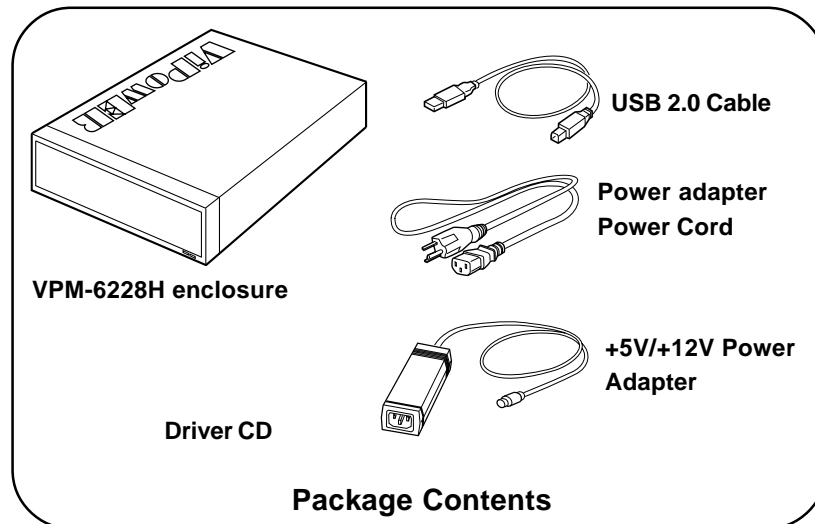
Its hot-swapping and Plug-n-Play features gives you a great convenience on the road, where it can be connected/disconnected without powering down your system. The VPM-6228H USB 2.0 External Drive is compatible with Apple Macintosh and Windows computers.

Note:

In order to reach USB 2.0 speed, your computer must have a host adapter card with USB 2.0 support. The VPM-6228H will auto detect the speed of your USB port and adjust between USB 1.0 and USB 2.0 speed.

1-3 Package Checklist

The VPM-6228H / True Metal USB 2.0 External Enclosure with 3 ports HUB package contains the following items:



- 1) The VPM-6228H external enclosure
- 2) One USB 2.0 Cable
- 3) One +5V/+12V Power Adapter
- 4) One Power Adapter Power Cord
- 5) One "Drivers and Utility Installation" CD
- 6) VPM-6228H User's Manual

If any of these items are missing or damaged, please contact your dealer or sales representative for assistance.

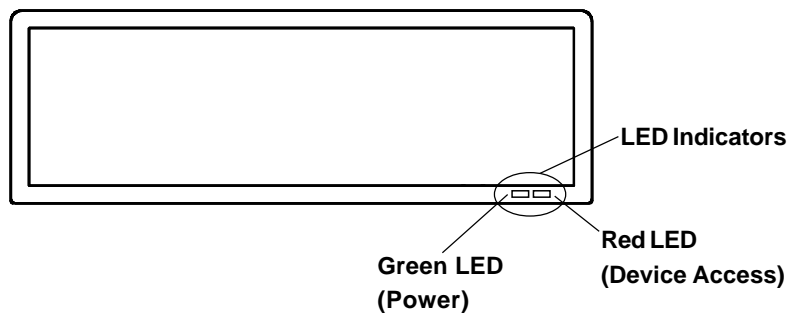
2. Hardware

2-1 LED indicators located on the front panel

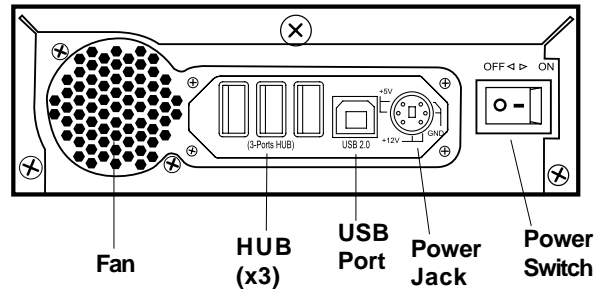
The Red and Green indicators are located on the front panel of the VPM-6228H.

The Green LED is lit when the power ON.

The Red LED flashes when connect with one HDD. But the Red LED does NOT flashes when connect with one 5.25" device.



2-2 Connectors located on Back panel



2-3 Installation

The following sections will guide you through the installation of one 5.25" device or one 3.5" HDD assembled with the VPM-6228H enclosure. There are two parts to the installation:

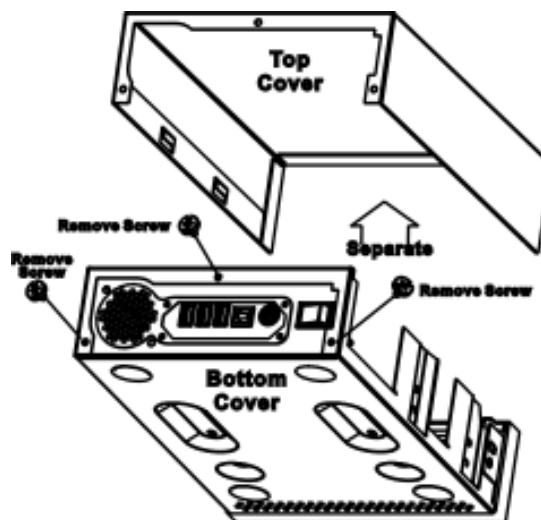
1. *Assembly with one 5.25" IDE device.*
2. *Assembly with one 3.5" HDD.*

A small screwdriver is the only tool required.

Assemble with one 5.25" Device

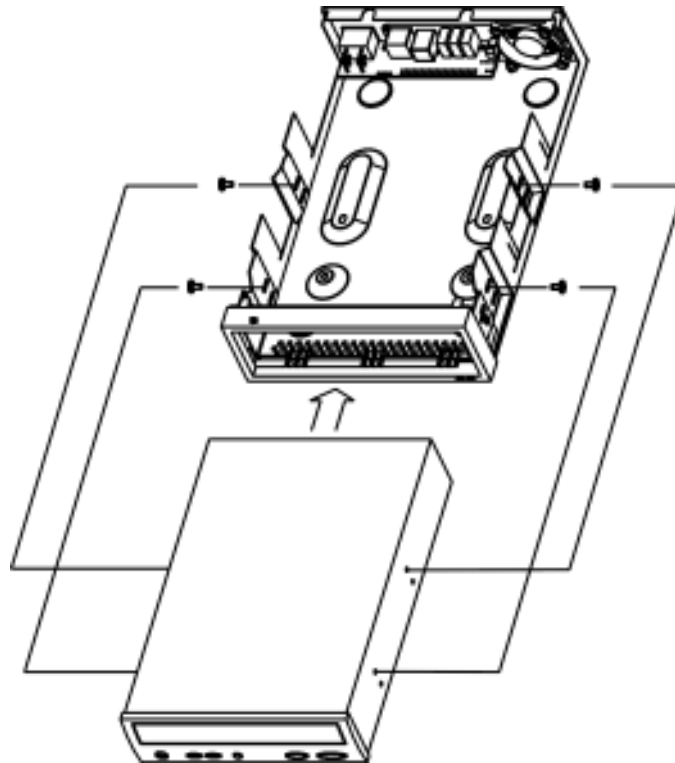
Step 1.

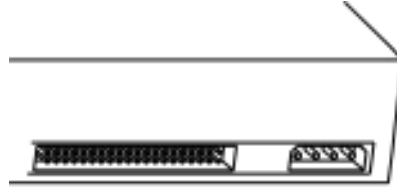
Remove the three retaining screws on the back of the external enclosure. Separate the top and bottom enclosure covers.



Step2.

a) Place one 5.25" IDE device in the bottom enclosure cover. Align the 5.25" IDE device mounting holes with the mounting holes on the bottom cover and secure with four screws (two on each side).





b) Attach the 40-pin IDE cable from the rear panel of the bottom cover to the 40-pin connector on the back of the 5.25" device to ensure pin-1 to pin-1 connection, orient the cable so the colored stripe edge is closest to the power connector.

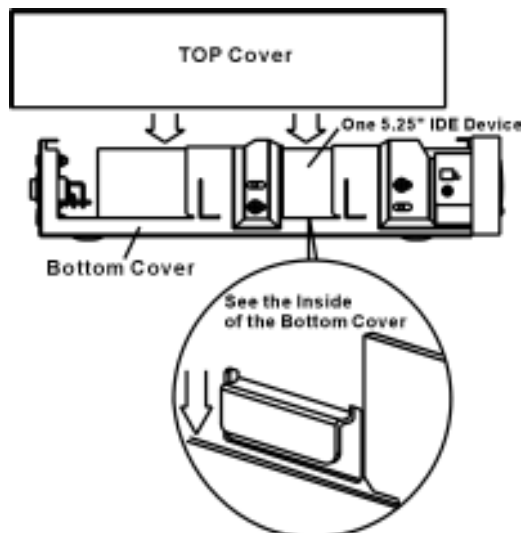


c) Attach the 4-pin power cable from the rear panel of the bottom cover to the 4-pin connector on the back of the 5.25" device.

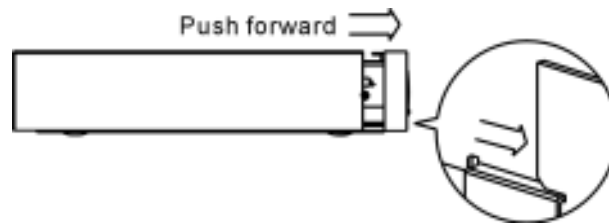


Step 3.

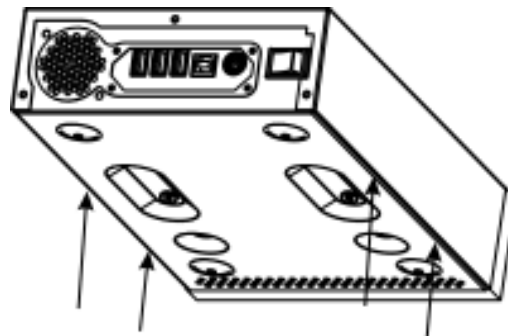
a) Replace the top cover over the drive assembly, making sure the side groove guide of the top cover slides within the side groove guide of the bottom cover.



b) Slide the top cover forward until it fits tight within the front groove guide.



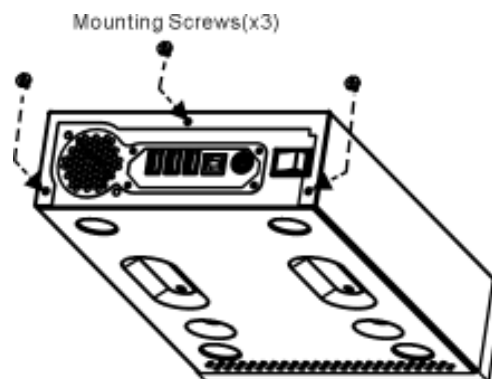
c) Make sure the top and bottom groove guides are matched and form a tight fit.



Make sure form a tight fit.

Make sure form a tight fit.

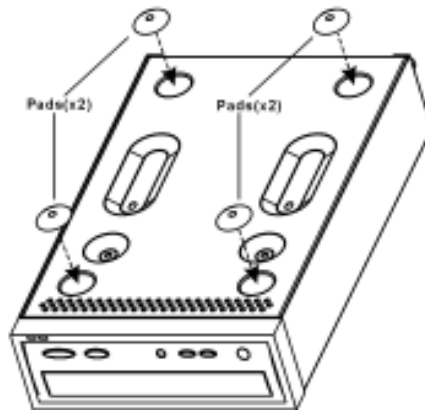
d) Replace the three screws which were removed in Step 1 from the back of the enclosure.



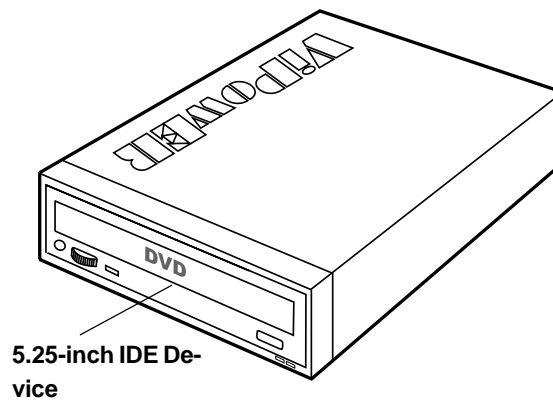


Step4.

Adhere the four pads on the bottom of the drive assembly.



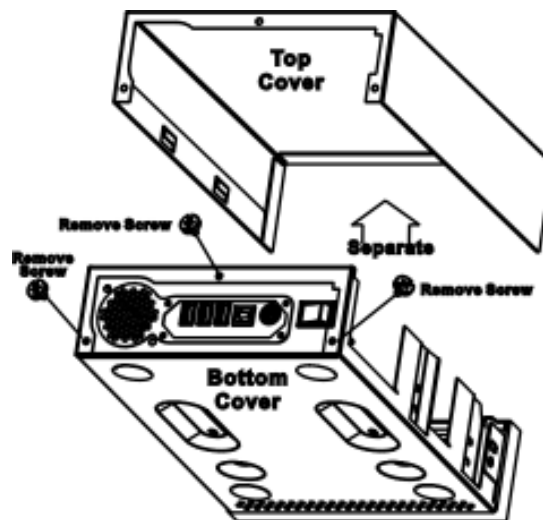
The installation is complete and the VPM-6228H external enclosure is now ready to use.



Assemble with one 3.5" HDD

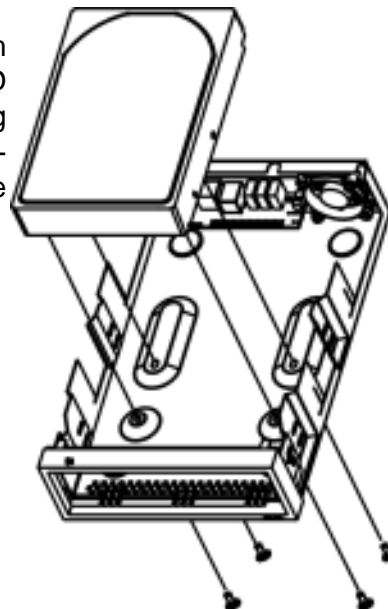
Step1.

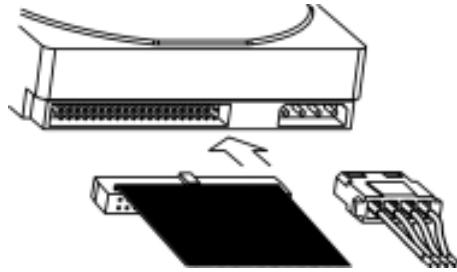
Remove the three retaining screws on the back of the external enclosure. Separate the top and bottom enclosure covers.



Step2.

a) Place the HDD in the bottom enclosure cover. Align the HDD mounting holes with the mounting holes on the bottom cover and secure with four screws (through the bottom cover).



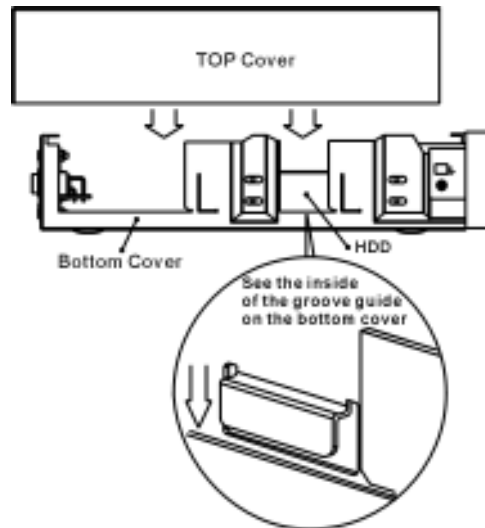


b) Attach the 40-pin IDE cable from the rear panel of the bottom cover to the 40-pin connector on the back of the 5.25" device to ensure pin-1 to pin-1 connection, orient the cable so the colored stripe edge is closest to the power connector.

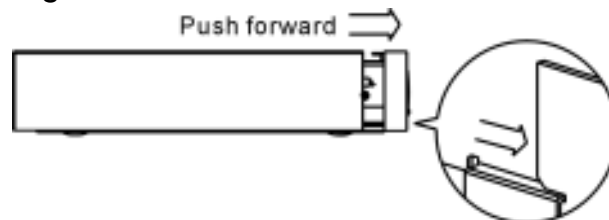
c) Attach the 4-pin power cable from the rear panel of the bottom cover to the 4-pin connector on the back of the 5.25" device.

Step3.

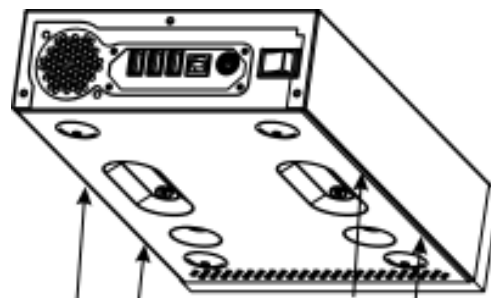
a) Replace the top cover over the drive assembly, making sure the side groove guide of the top cover slides within the side groove guide of the bottom cover.



b) Slide the top cover forward until it fits tight within the front groove guide.



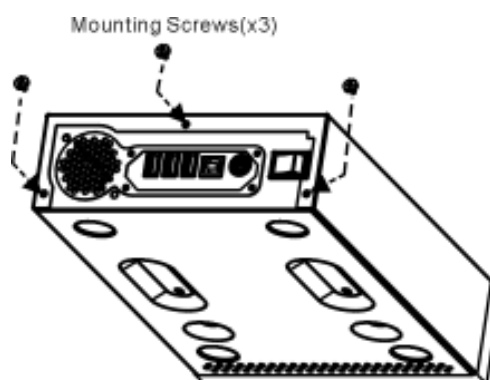
c) Make sure the top and bottom groove guides are matched and form a tight fit.



Make sure form a tight fit.

Make sure form a tight fit.

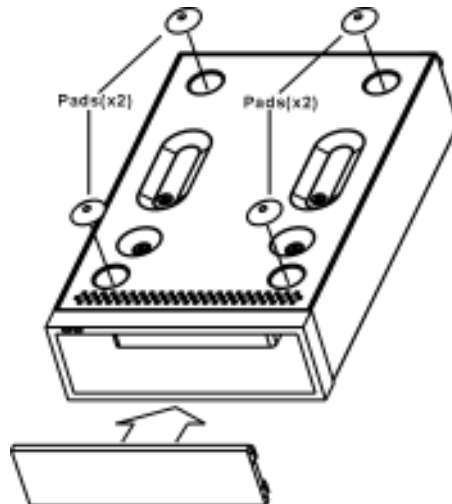
d) Replace the three screws which were removed in Step 1 from the back of the enclosure.



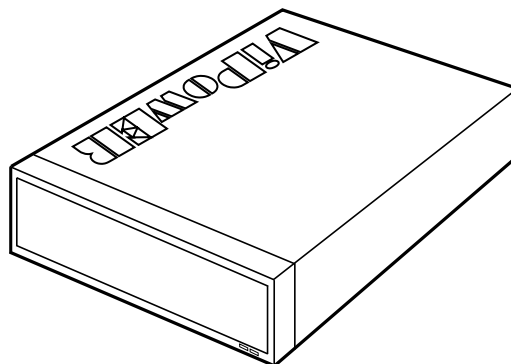


Step4.

Place the front cover into the drive assembly, and adhere the four pads on the bottom of the drive assembly.



The installation is complete and the VPM-6228H external enclosure is now ready to use.



2-4 Connecting the VPM-6228H to a Computer

Computer Requirements

- USB equipped notebook or desktop computer
- Windows 98SE/Me/2000/XP, or Mac OS 9.0 or above

Proceed with the following steps to connect the VPM-6228H to your computer.

Step1:

Boot-up your computer. Make sure the USB/USB 2.0 host adapter and driver are installed in your computer.

Step2:

Connect one USB connector end of the USB cable into the USB Port of your USB 2.0 External Enclosure VPM-6228H.

Step3:

Connect the Power Adapter Power Cord to the +5V/+12V Power Adapter. Then, plug one end of power cord into an AC power outlet, and the other end to the power inlet of your USB 2.0 External Enclosure VPM-6228H.

Step4:

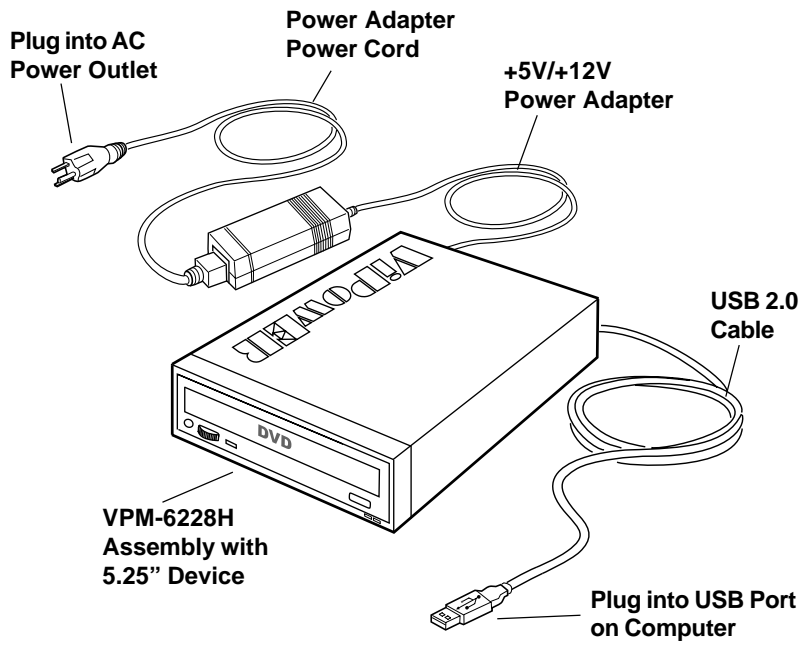
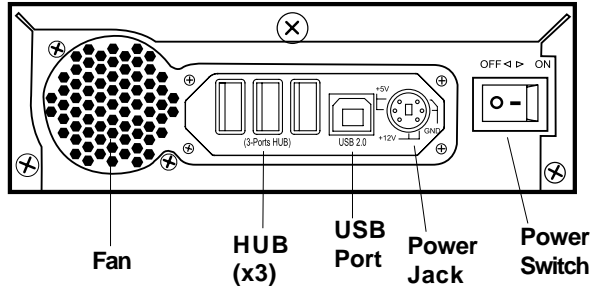
Power ON your USB 2.0 External Enclosure VPM-6228H.

Step5:

Proceed to the next "Driver Installation" section and follow the instructions for your operating system after plugging the USB connector end of the USB cable into a USB port on your computer.

Note:

This device will auto-detect the speed of your USB port and adjust between USB 1.0 and USB 2.0 speed once the driver is installed.



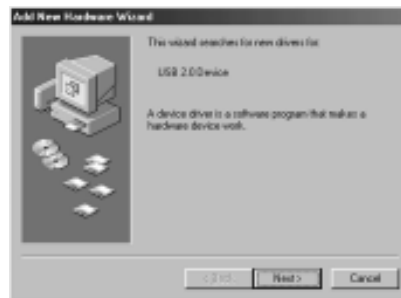
VPM-6228H Connects to USB Port on computer

3. Drivers Installation

3-1 Windows 98SE

If this is the first time using your USB 2.0 External Drive, you must first run the [SETUP.EXE] from the USB 2.0 “Drivers and Utility Installation” CD after you connect your USB 2.0 External Drive to your computer. Then proceed with the following:

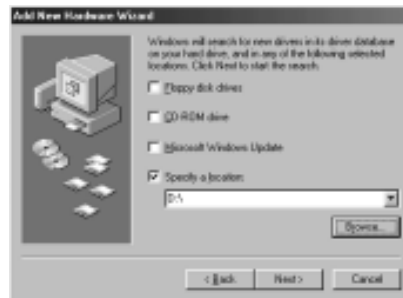
1. Connect your USB 2.0 external drive to an available USB port on your computer.
2. An “Add New Hardware Wizard” screen will appear. Click [Next].



3. Select “Display a list of all drivers” then click [Next].



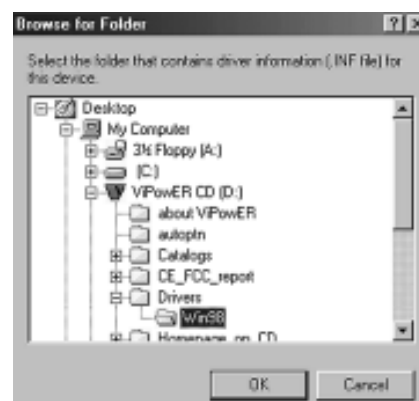
4. Click [Browse].



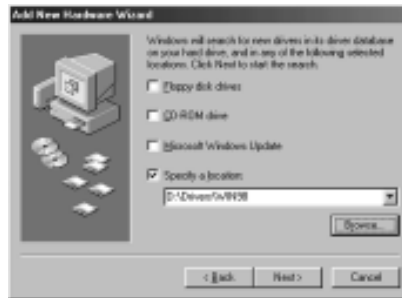
5. Double click on the ViPower CD icon of the [My Computer] directory.



6. Select "Win98" under the "Drivers" directory, then click [OK].



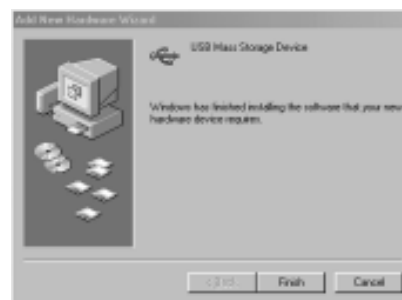
7. Click [Next].



8. Click [Next].



9. The system will request you to restart your computer. Click [FINISH].



10. After the system restart, the installation is complete. You can now connect your USB 2.0 External Drive to the computer.
11. After connecting the USB 2.0 External Drive, double click on [My Computer]. A new drive [Usbdisk] icon should have been added. This identifies the USB 2.0 External Drive you just installed.



12. A green Unplug or Eject hardware icon will also be added in the system tray.



Note:

If the new drive does not appear in [My Computer], it means this USB 2.0 External Drive is a brand new hard disk drive which does not contain a partition. Please refer to Chapter 5 “Partitioning an External USB 2.0 Hard Disk” to prepare your USB 2.0 External Disk.

3-2 Windows Me/2000/XP

Step1:

If you are plugging the USB External Drive into your computer for the first time, the system will detect a USB 2.0 Storage Device and install the [USB Mass Storage Device] driver from system files automatically.

Step2:

After the system installs the USB mass storage device driver, double click on [MyComputer]. A new drive [Usbdisk] icon should have been added. It is the USB 2.0 External Drive which just installed.



Notes:

This USB 2.0 External Drive is supported by the Mass Storage Device Driver in Windows Me/2000/XP operating systems. You do not need to install any driver *after you finish installing the Windows 2000 Service Pack 4/Windows XP Service Pack 1 in the Windows operating system.*

If the new drive does not appear in [My Computer], it means this USB 2.0 External Drive is a brand new hard disk drive which does not contain a partition. Please refer to Chapter 5 "Partitioning an External USB 2.0 Hard Disk" to prepare your USB 2.0 External Disk.



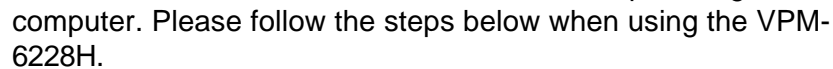
3-3 Mac OS

1. This USB 2.0 External Drive is supported by Mass Storage Support Mac OS 9.1X and above. You do not need to install any drivers.
2. When you plug this USB 2.0 Hard Disk into the USB port of your Mac computer, the mass storage volume should automatically appear on the desktop in a few seconds.

3-4 Linux 2.4

This USB 2.0 External Drive is supported by Mass Storage Support Linux Kernel 2.4 and above. You do not need to install any drivers.

4. Use The USB 2.0 External Enclosure VPM-6228H



After the first time installation, you can connect or disconnect the USB 2.0 External Enclosure VPM-6228H without powering off the computer. Please follow the steps below when using the VPM-6228H.

4-1 Connect the USB 2.0 External Enclosure VPM-6228H to Computer

Step1:

Plug the first USB port connector of the USB cable into the USB port of your USB 2.0 External Enclosure.

Step2:

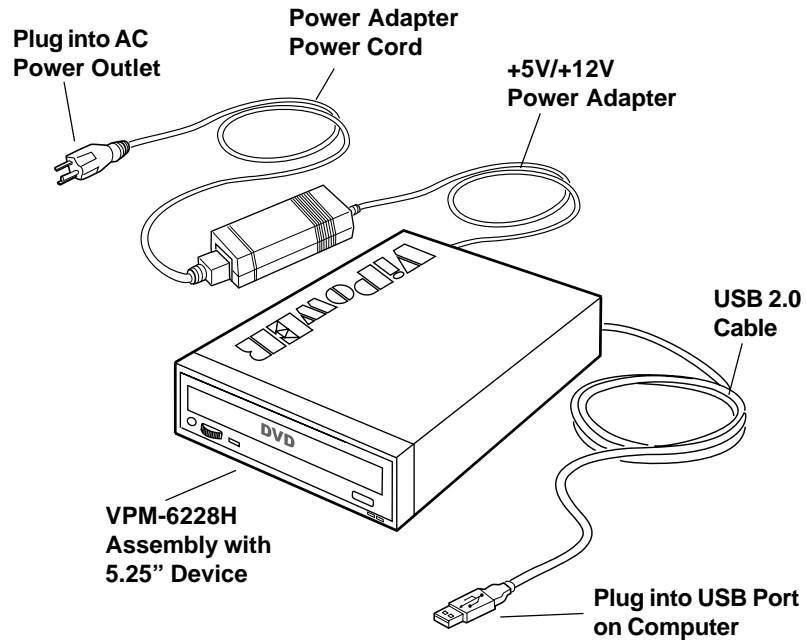
Plug the second USB port connector of the USB cable into an USB port on your computer.

Step3:

Plug the power adapter power cord to the power inlet of your USB2.0 External Enclosure. Turn the power ON.

Step4:

USB 2.0 External Enclosure is ready for use immediately.



VPM-6228H Connects to USB Port on computer

4-2 Disconnect the USB 2.0 External Enclosure VPM-6228H from Computer

Windows 98:

Step1:

Double click the green Unplug or Eject hardware icon in system tray and click the drive that you want to remove and click on [STOP].



Step2:

When the system prompts 'Confirm device to be stopped', click [OK]. When the green arrow icon disappears, you may safely unplug the USB cable from the USB port of computer.

Windows Me/2000/XP

Step1:

Double-click on the [Unplug or Eject Hardware] icon in the system tray. A dialog box appears.



Step2:

Highlight the [USB Mass Storage Device] in the dialog box, click [STOP]. Choose the USB 2.0 External Enclosure VPM-6228H that you want to disconnect, then click [STOP] again on the next screen.

Step3:

Wait a few seconds until the system prompts "You may safely remove this device". Then, disconnect the USB 2.0 External Drive from the computer.



MAC OS

When disconnecting your USB 2.0 External Drive from a Mac computer, first close all windows and quit all running applications that are stored on the USB 2.0 External Drive. Next, drag the USB 2.0 External Drive's icon into the "Trash" to dismount it from the Desktop. You can now safely disconnect the USB 2.0 External Drive from the USB port.

CAUTION!!

Do not unplug the USB 2.0 External Drive from the USB port of your computer or HUB while copying files to/from the device or while files or applications stored on the USB 2.0 External Drive are in use.

DOING SO MAY RESULT IN LOSS OF DATA.



5. Partition the External USB 2.0 Hard Disk

5-1 Partition Under Windows 98/ME

Boot-up the computer into Windows 98/ME. Next, connect your USB 2.0 Hard Disk Drive to the USB port.

There are two methods to partition and format your USB 2.0 Hard Disk Drive.

Method 1

Step1:

Click on [Start], select [Control Panel] in [Settings], double click [System] and open [Hard disk controllers].

Step2:

You should see the USB 2.0 Hard Disk you just added. Highlight the USB Hard Disk and choose [Properties], select [Settings]. Set the USB 2.0 Hard Disk to [Removable].

Step3:

After restarting the system, a removable HDD is added to [My Computer]. Choose the removable HDD and right click button of mouse. Select [Format] to format your USB 2.0 Hard Disk Drive.

You can only set the USB 2.0 Hard Disk Drive to one partition using this method.

Method 2

Step1:

Go into MS-DOS mode by clicking on [Start], then choose the [MS-DOS Prompt] in [Programs].

Step2:

At the DOS prompt, type [FDISK] and press Enter.

Step3:

If FDISK quits without any message, go back to the Windows 98 screen, disconnect the USB 2.0 Hard Disk and re-boot the computer. Reconnect the USB 2.0 HDD and go back to Step 1 to proceed.

Step4:

For the first screen of FDISK, answer the question:

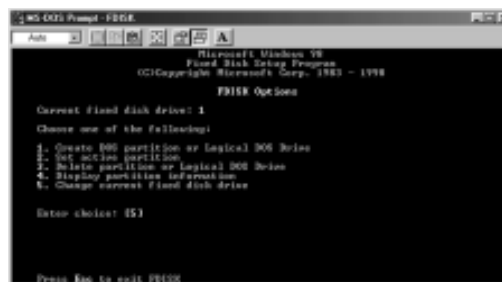
Do you want to enable large disk support?

[Y] if you want to build a partition larger than 2GB.

[N] if you want to build a partition small than 2GB.

Step5:

The next screen is [FDISK OPTIONS]. Type [5] to select the disk.



Important:

You must type [5] in this screen to change the current fixed disk drive to build a partition. The default fixed drive set by FDISK is your internal hard disk drive.

WARNING!!

If you don't change the fixed disk drive to the USB 2.0 Hard Disk, the data of your internal hard disk will be destroyed!

Step6:

In the [Change Current Fixed Disk Drive], type the disk drive number that is assigned to the USB 2.0 Hard Disk.

Step7:

Go back to [FDISK OPTIONS] screen, Now you can create or delete a partition of the USB 2.0 Hard Disk.

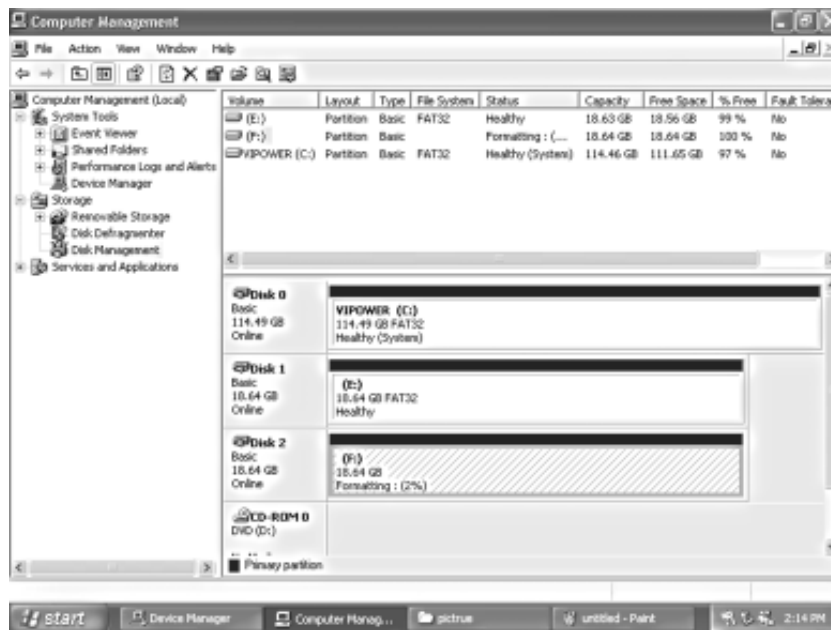
Step8:

After you finish FDISK, go back to the Windows screen, disconnect and then reconnect the USB 2.0 Hard Disk again to activate these changes. Double click on [My Computer]. The USB 2.0 Hard Disk Drive icon that you have now partitioned should be seen.

5-2 Partition under Windows 2000/XP

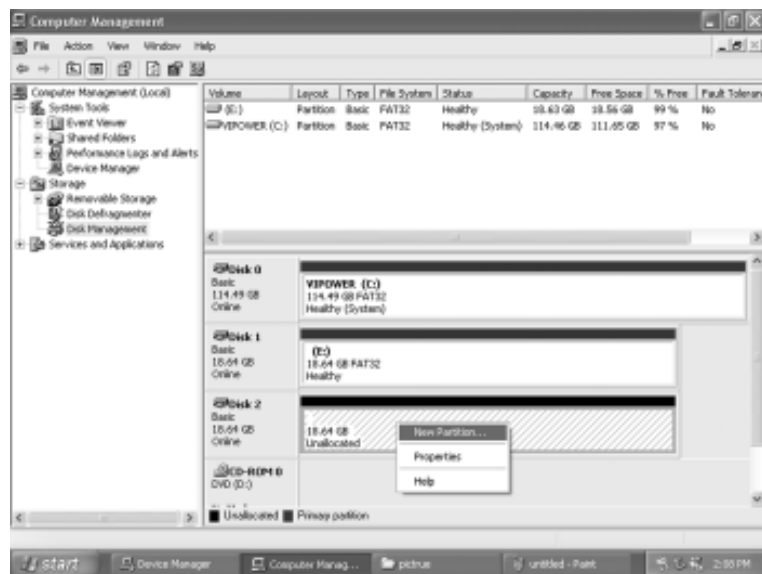
Step1:

To partition the USB 2.0 Hard Disk Drive under Windows 2000, connect the USB 2.0 Hard Disk to the USB port on your computer. Next, click [Start], select [Control Panel], [Settings], open [Administrative Tools] and double click [Computer Management].



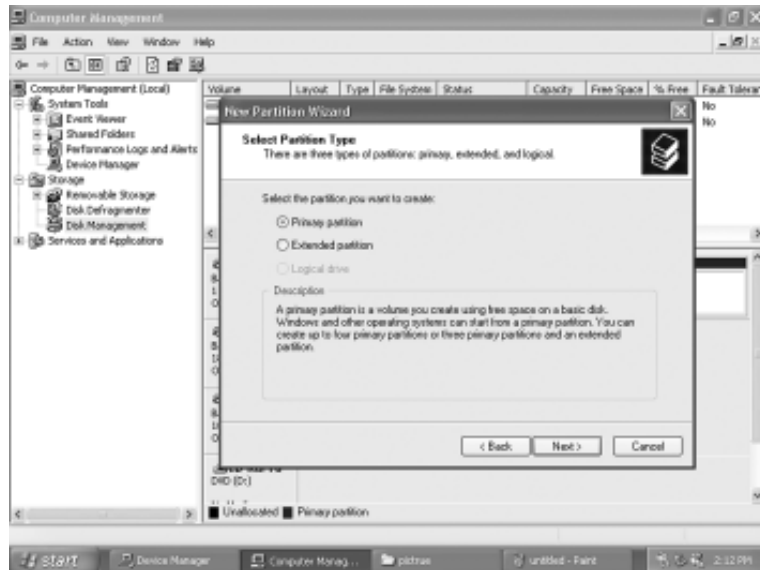
Step2:

Click on [Disk Management]. All connected disk drives will be listed. Find the USB 2.0 Hard Disk that you added and to the right of the disk, view the status of the partitions of this disk drive. You can create a new or delete an existing partition by right-clicking on this area.



Step3:

Right-click on the partition status area of the USB 2.0 Hard Disk Drive. Click on [Create Partition....] and the “Create partition wizard” will appear.




Step4:

Follow the instructions of the wizard to partition and format your USB 2.0 Hard Disk Drive.

After you have completed the partitioning and formatting of the USB 2.0 Hard Disk Drive, you can write data to it.



 Printed on recycled paper.



Free Manuals Download Website

<http://myh66.com>

<http://usermanuals.us>

<http://www.somanuals.com>

<http://www.4manuals.cc>

<http://www.manual-lib.com>

<http://www.404manual.com>

<http://www.luxmanual.com>

<http://aubethermostatmanual.com>

Golf course search by state

<http://golfingnear.com>

Email search by domain

<http://emailbydomain.com>

Auto manuals search

<http://auto.somanuals.com>

TV manuals search

<http://tv.somanuals.com>