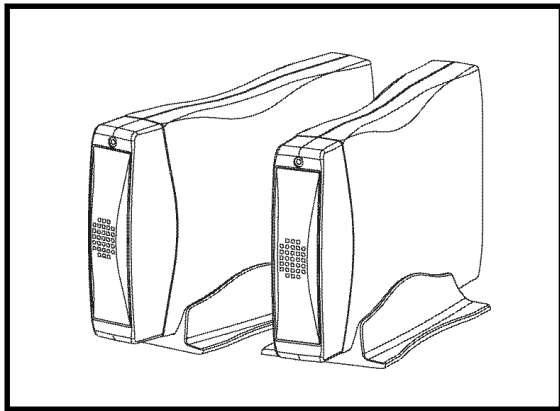


Model NO.: **VP-9258V**

Portable 3.5 in. External Enclosure



Installation Guide

ViPower
www.vipower.com

Table of Contents

Introduction	1
Features	1
Alternative Smart connections.....	3
Electrical safety for users	3
Operating systems	4
Certificate of Compliance	5
Installation	7
Prior to installation	7
Installing the USB software	12
Connecting External Enclosure to your PC/Notebook or Mac	13
Trouble shooting - Frequently asked questions	17
Parts List	21

PROPRIETARY NOTICE

ViPowER, Inc. makes no warranty of any kind with regard to this material, including, but not limited to, the implied warranties of merchantability and fitness for a particular purpose. ViPowER Inc. shall not be liable for errors contained herein or for incidental or consequential damages in connection with the furnishing, performance, or use of this material.

This document contains proprietary information which is protected by copyright. All rights are reserved. No part of this document may be photocopied, reproduced, or translated to another language without the written consent of ViPowER Inc. The information contained in this document is subject to change without notice.

PC is a trademark of International Business Machines Corporation.

Mac is a registered trademark of Apple Computer, Inc.

Windows is a registered trademark of Microsoft Corporation.

All other trademarks belong to their respective owners.

© Copyright 2003 by ViPowER, Inc.

5/2003/5K

Introduction

Congratulation on your purchase of VP-9258V USB 2.0 Portable 3.5 in. External Enclosure.

This External Enclosure has been designed to provide portable hot-swapping (Plug and Play) operation of internal 3.5 in. hard drives.

Supplied with this enclosure is a USB 2.0 smart cable, AC/DC adapter, stand for enclosure and a CD containing installation driver(s). The CD also contains a copy of this installation guide.

The USB 2.0 smart cable (36 pin interface cable connection) enables connection of the Enclosure to your PC/Notebook or Mac*.

All products are CE and FCC certified.

Power adaptor(s) are certified to EN60950 electrical safety standard.

(* Check Operating System to ensure compatibility)

Features

VP-9258V Portable 3.5 in. External Enclosure

- fast and easy USB 2.0 solution for both PC and Mac.
- USB 2.0/IDE compliant.
- supports USB 1.1 on Windows 98, 98SE, 2000, ME, XP and Mac OS 8.6, 9.x, OS X.
- supports USB 2.0 on Windows 98SE, 2000, ME, XP and Mac OS X.

Note

For USB 2.0 IDE bridge to perform at USB high speed it is necessary to have USB 2.0 host port(s) and USB 2.0 host driver installed.

- 40 times faster than USB 1.1.
- fully compatible with IDE peripheral device.

- supports HDD, MO, CR-ROM, CD-RW, DVD and DVD-RAM.
- hot swapping (plug and play). Support USB 2.0 transfer rates of 12 Mbps and 480 Mbps.
- high speed (480 Mbit) and full speed (12 Mbit) support.
- integrated USB transceiver.
- USB suspend/resume remote wake up support Power modes.
- self powered (+ 5V). Supports ATA P10 modes 0-4.
- ATA interface operation mode automatically selected during device initialisation or manually programmed with configuration data Support UDMA modes 0-4 of operation.

USB 2.0 Smart cable (VP-9208)

- USB 2.0 IDE Bridge is fully compatible with USB 1.1 and USB 2.0 function.
- supports two interface descriptors - FS (full speed) and HS (high speed).
- USB 2.0 IDE bridgeboard provides a high speed (480 Mbps) serial data connection between IDE devices and USB 2.0 Host PCI.
- USB 2.0 IDE bridge provides true Plug and Play and High performance to support existing storage drives. For example Hard drives, MO drives, CD devices and DVD devices to PC with USB 2.0 interface.
- ATA interface supports ATA PIO modes 0.4 and Ultra mode DMA modes 4.0.

Alternative Smart connections

Your VP-9258V is supplied with the VP-9208 USB2.0 smart cable. You can change connectivity by simply changing your smart cable!

Options are:

Alternative connections:

- VP-9001 SATA (Serial ATA) to IDE 36 pin connector.
- VP-9006 PCMCIA to IDE 36 pin connector.
- VP-9007 Card Bus to IDE 36 pin connector.
- VP-9008 USB 1.1 to IDE 36 pin connector.
- VP-9009 Firewire 1394 to IDE 36 pin connector.
- VP-9208* USB 2.0 to IDE 36 pin connector.

(* Supplied with your VP-9258 kit)

Electrical safety for users

Always turn off the power supply to the computer and auxiliary devices prior to changing hardware.

Sensitive electrical components can be damaged by sudden power surge. Therefore, do not disconnect components or make any connections whilst the power is on.

Only use approved power supply.

Ensure that all equipment that is designed to be earth is correctly earthed.

Always use plugs and cables supplied with the equipment.

Never replace a blown fuse with one of a higher rating.

Always ensure that ventilation holes and fan outlets are kept free from obstruction, otherwise overheating of the equipment could occur.

Operating systems

Microsoft XP

Download Service Pack 1 from Microsoft (free download) this ensures your copy of XP has the latest drivers and improves recognition of external device and smart cable.

Your VP-9258V will be automatically recognized and accessible.

Windows 2000

You need to load the smart cable driver from the CD supplied.

Following loading of this driver your external HDD (device) will be automatically recognized and accessible.

Windows 98SE and ME

You need to load the smart cable driver and USB driver from the CD supplied.

Following loading of these drivers your external HDD (device) will be automatically recognized and accessible.

Apple Mac

Ensure your Apple Max OS has USB 2.0 host adapter driver installed. These drivers should be with your USB 2.0 host adapter.

Certificate of Compliance

 **SPORTON LAB.** Certificate No: **C20204**

CERTIFICATE

EQUIPMENT: 3.5" EXTERNAL CASE
MODEL NO.: VP-9258V (please refer: VP9065V, with 2.0 rubber
VP-92055S, power: VP-9912A-00W)

APPLICANT: VP-CORP, INC.
1173 E. 9TH, LANE 302, Jing-Shing Rd., Wan-Shan Dt.,
Taichung, Taiwan, R.O.C.

 **HEREBY** CERTIFY THAT:

THE MEASUREMENTS SHOWN IN THIS TEST REPORT WERE MADE IN ACCORDANCE WITH THE PROCEDURES GIVEN IN EUROPEAN COUNCIL DIRECTIVE 80/390/EEC. THE EQUIPMENT HAS PASSED THE TEST PERFORMED ACCORDING TO EUROPEAN STANDARD

**EN 30021398 Class B, EN 61000-3-2:2008, EN 61000-3-0:1999 and
EN 30021398 (IEC 61000-4-2:1995, IEC 61000-4-3:1995, IEC 61000-4-4:1995,
IEC 61000-4-5:1995, IEC 61000-4-6:1995, IEC 61000-4-7:1995,
IEC 61000-4-11:1994). THE TEST WAS CARRIED OUT ON-06th 05, 2002 AT
SPORTON INTERNATIONAL INC. LAB.**

K. J. Lin
Manager


SPORTON INTERNATIONAL INC. 8F, No. 102, Sec. 1, Hsin Tai Su Rd., Tai City, Taichung, Taiwan, R.O.C.

FC **SPORTON LAB.** **KYLAJ** Certificate No. 030904


CERTIFICATE OF COMPLIANCE

Authorized and/or Declaration of Conformity
according to
47 CFR, Part 2 and Part 15 of the FCC Rules

Equipment: 3.0" EXTERNAL CASE
 Model No.: VP-9258V (device case: VP9258V, USB 2.0 cable: VP-9258V, power: VP-9258V-00V)
 Applicant: WIPROTEK, Inc.
 11 P.O. Box, Lane 202, Jing-Shing Rd., Wen-Shan Dist., Taipei, Taiwan, R.O.C.

 **EMERBY** CERTIFY THAT:

THE REQUIREMENTS SHOWN IN THIS TEST REPORT WERE MADE IN ACCORDANCE WITH THE PROCEDURES GIVEN IN ANSI C63.4 - 1992 AND THE ENERGY EMISSIONS OF THIS EQUIPMENT WERE **FAVORABLE TO CLASS B** AND FCC PART 15 IN BOTH RADIATED AND CONDUCTED EMISSIONS CLASS B LIMITS. THE TESTING WAS COMPLETED ON **04.05.2002** AT **SPORTON INTERNATIONAL INC. LAB.**


 R. J. LI
 Manager

SPORTON INTERNATIONAL INC. 87, Ho-138, Sec. 1, Hsin-Tai Wu Rd., Hsi-Chieh, Taipei Taiwan, Taiwan, R.O.C.

Installation

Prior to installation

The VP-9258V USB 2.0 Portable 3.5 in. External Enclosure is supplied with all the necessary items to enable successful installation.

Prior to commencing installation please check to ensure that the following parts are included. In the unlikely event of any parts being damaged, or missing, please contact your supplier or email support@vipower.com.tw.

Do not attempt to install this device with parts other than those recommended by Vipower.

V-9258V External Enclosure pack comprises:

- 3.5 in. Portable External. VP-9054V.
- USB 2.0 Smart cable. VP-9208.
- AC/DC Adapter.
- CD containing:

Software driver(s).

The driver(s) must be installed if running on Windows 98SE or ME.

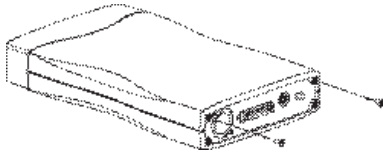
Installation Manual in pdf format.

Please note that to use this information you will need Adobe Acrobat 5.0 Reader installed on your computer. Copies of Acrobat 5.0 Reader can be downloaded from the Adobe web site. If you have a previous version of Acrobat Reader installed you will need to uninstall it to ensure no conflict occurs.

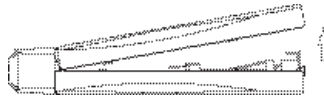
- Stand for VP-9054V enclosure.
- Fixing Screw Pack.
- Copy of this Installation Manual.

Installation of Hard drive

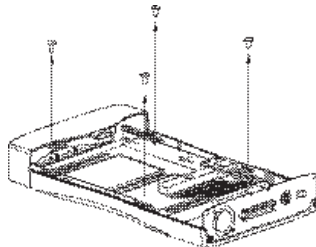
1. Remove the two retaining screws securing the upper case of the Enclosure to the rear face.



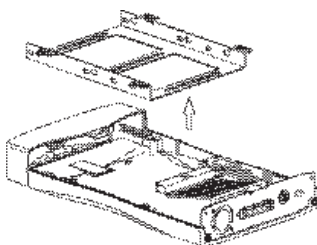
2. Carefully lift the rear of the case. Then, slide it away from the rear face of the front panel.



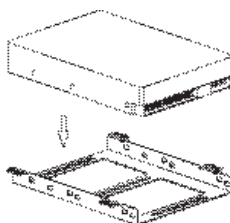
3. Remove the four screws retaining the hard drive cradle to the base unit of the Enclosure.



4. Lift out the cradle.



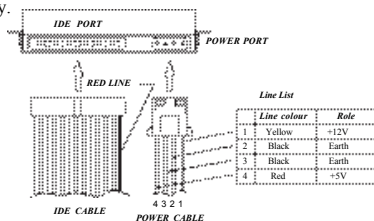
5. Position the hard drive into the cradle.



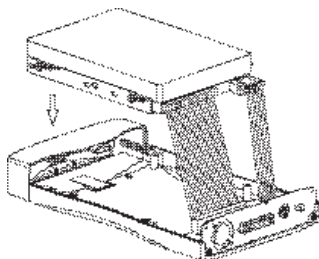
6. Secure the hard drive into the cradle using the four retaining screws.



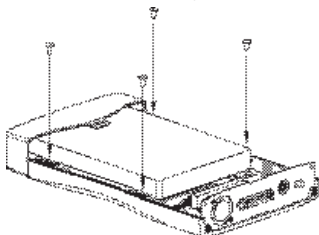
7. Locate the IDE port and power port situated on the rear face of the hard drive. Plug the IDE cable and power cable into the appropriate port ensuring that they fit securely.



8. Position the cradle/hard drive onto the Enclosure base unit.



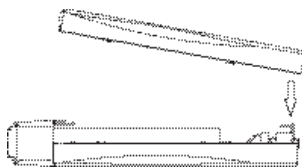
9. Secure the cradle with the four retaining screws.



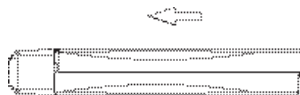
10. Replace the upper case.

Note

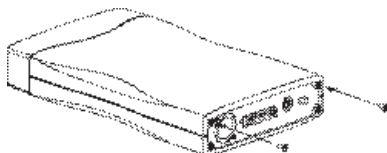
Ensure that the groove in the upper case aligns with the slot in the base unit.



11. Slide the upper case forward ensuring that it abuts the rear face of the front panel.



12. Finally, secure the upper case with the two retaining screws.



Installing the USB software

Prior to connecting your External Enclosure it is necessary to first install the USB driver applicable to your system.

To install the driver use the following procedure.

1. Insert the CD supplied with this package into your computer.
2. Select the appropriate driver (i.e. driver for PC/Notebook or Mac).
3. Install the driver software by following the on screen instructions.

Note

Windows 2000 and Windows XP

If you are operating on Windows 2000 or Windows XP it will be necessary to download the upgrade software from the Microsoft website.

Windows 2000 - Upgrade 2000 SP3 (Service Pack 3).

Windows XP - Upgrade XP SP1 (Service Pack 1).

If the system displays the drive as "Unknown Device in Device Manager", double click on the icon and select Install Driver.

This procedure should install the driver, the driver appearing under CD-ROM.

If you receive a message "Windows is already using the best driver for the device" highlight and remove the Unknown Device.

Finally, restart your computer or turn the drive off and then on again.

4. Once the software is installed switch off your computer and any auxiliary devices.

Please note

(a) If you experience any problems during installation you may need to remove "ghost drives" in Safe Mode. Please consult Technical Support for

assistance.

(b) If your Operating system is Windows NT, 95 or Mac OS 9.0 or lower, the drive is not compatible and will not be detected.

Connecting External Enclosure to your PC/ Notebook or Mac

Prior to connecting your External Enclosure to your PC/Notebook or Mac ensure that your USB 2.0 Host Card Hardware (inside your computer) and driver software are correctly installed. This is essential to ensure USB 2.0 performance.

1. Ensure that your computer and any auxiliary devices are switched off.
2. Connect the USB 2.0 smart cable between the Enclosure and your PC/Notebook (or Mac).

Notes

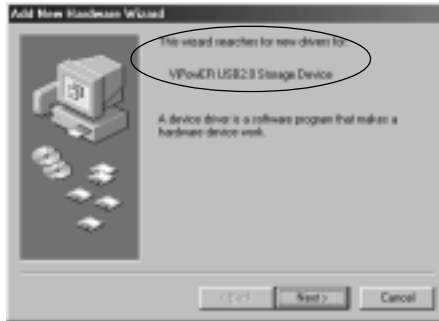
- (a) 36-pin connection into the rear face of the Enclosure, the USB connection into an appropriate USB port on your computer.
 - (b) If you have a hub integrated into your system, do not connect until the installation is completed.
3. Ensure that the adapter is switched on.
 4. Switch on the Enclosure followed by your computer.

Installation procedure

1. Prior to installation note that there is no USB interface device icon displayed.



2. Once the smart cable is connected the Enclosure will automatically be detected by the system.



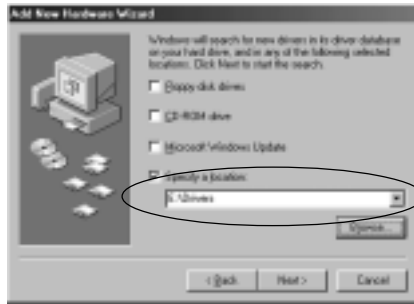
Click Next.

3. A window will be displayed indicating, "Search for best driver for your device".



Click Next.

4. The next window requests a search for new drivers. Ensure that "Specify a location" is selected.



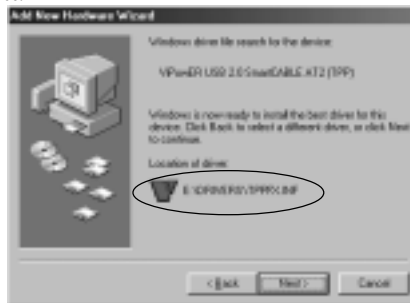
Click Next.

Note

x:\ means user disc code.

The specified location will depend upon user's CD-ROM drive code.

5. This window indicates that Windows is ready to install the best driver for the device.



Click Next.

6. The final window informs you that Windows has completed the installation.



Click Finish.

7. On completion of the installation an icon will appear in the right-hand side of the My Computer window indicating that USB 2.0 has successfully connected to your computer.



Trouble shooting- Frequently asked questions

(VP2528V,VP9258V,VP6228V)

Question

There is no power to the Enclosure.

Answer

Check to ensure all AC power adapter connections are fitted firmly (power cable and converter cable).

Check fuse in 3-pin plug (ensure you only replace with correctly rated fuse).

Question

My system does not recognise the external HDD.

Answer

Check Operating System and ensure latest service pack(s) are in use.

Check drivers are loaded (if using 98SE and ME).

Check cable connection to rear of external case and at USB port in PC/Notebook.

Question

Why do I get an error when installing CD writer: The set up file is invalid, corrupted or a virus has modified it. The installer/uninstaller must abort?

Answer

This error message can be caused by anti virus software running or a dirty disc.

Below are two solutions, (one for each issue) provided to workaround the problem:

(1)This error has been reported when the computer is running Windows 95/98/NT and Norton Anti virus. Disable Norton Antivirus and then install your CD writer.

(2) If you do not have an Anti virus programme running try the following procedure. Copy the contents of the CD writer onto the hard drive and then run the installation from the hard drive.

Question

Why is my CD-RW or CD-ROM drive not being recognized by Sony Hot Burn

Answer

This happens most frequently with an ATAPI(IDE) CD-ROM drive. This can be caused when the IDE Bus master drivers need to be updated.

Please contact your PC or motherboard manufacturer to get updated IDE Bus mastering controller drivers. Also, you may need to upgrade your motherboard BIOS. We require the CD-ROM and CD-RW drive to use an IDE connection to the primary or secondary IDE controllers (usually on the motherboard).

Some systems have sound cards with IDE connectors or other proprietary IDE connections. The CD-RW drive will not function correctly with these IDE connections. If you update your IDE Bus mastering drivers and still cannot see the CD-ROM drive, then you may need a newer CD-ROM drive. Also try to have the CD-RW drive solely on an IDE connector. If you cannot, do not have your hard drive and your CD-RW drive on the same IDE connector.

Question

Why is my CD-RW or CD-ROM drive not being recognized by Sony Hot Burn

Answer

- (1) Verify that the USB port is enabled in your BIOS set-up or in the Device Manager in Windows 98.
- (2) This issue can occur if the drive was powered off and back on after the system was started. Shut down both the computer and the drive, then power on the USB Spressa drive, then power on the computer.
- (3) The Power Button and the Caddy Eject Button are in very close proximity

and may accidentally cause this issue. Make sure the drive is powered on.

(4) Ensure that the drive is not connected to a USB Hub and is connected directly to the computer.

(5) Ensure that the USB cable does not have any bent pins or broken connectors.

(6) The cable for the CD actually houses the firmware of the USB bridge. If this cable is not connected or seated firmly, the drive may not be detected; however the Shuttle Technologies USB entries will be present in the Device Manager.

(7) If the system BIOS supports a setting for IRQ for USB, ensure this option is enabled.

(8) In some cases, USB support on a system may not conform to current USB standards, may not fully support IRQ sharing for USB devices, or may be limited to certain devices (keyboards, mouse, etc.). You may be able to get an update from your computer manufacturer or bios manufacturer.

(9) If you have previously connected a USB CD-RW drive to the system and the CD-RW drive is not being detected properly, remove any Unknown Devices from Device Manager before proceeding.

(10) Go into Safe Mode and remove all ghost drives. They are generally listed under CD-ROM, SCSI Controller, and Universal Serial Bus Controller.

Reboot the system, and turn the drive on after the system is fully booted to Windows.

(11) Attempt to install the CD drive on another system.

If the drive installs and is detected correctly on the other system, the problem lies in the software or hardware configuration of the original system.

(12) CD Writer, make sure the Shuttle Technologies USB entries are present in the Device Manager. If they are not, uninstall CD Hot Burn and reinstall the CD-ROM disc and the floppy disk.

(13) If the drive still is not detected, contact your system manufacturer to check your USB version. It needs to be version 1.1.

Question

Why is my drive detected as an "Unknown Device" in Windows?

Answer

We have discovered that many times this is caused by "Ghost Drives" in the operating system.

When hardware (and some software) is installed and then removed the system does not remove all of the drivers and references to the old drive. This causes problems installing new devices.

This problem can be fixed by booting into safe mode and removing references from Device Manager to drives not on your system. Please contact Microsoft Technical Support for help when working in Safe Mode and removing these "Ghost Drives".

Question

My Toshiba laptop will not detect the USB CD-RW drive.

Answer

Please upgrade to Windows(r) 98 SE (Second Edition).

This should resolve the detection issue.

Question

My USB drive is not detected by the computer's operating system.

Answer

The drive needs to be connected to a USB port that is built into the system.

Sony drives are not supported on a USB card that is installed into the system.

The USB port driver needs to be version 1.1.

To find out the version of your USB port, please contact your computer manufacturer.

Question

I am trying to connect my CD writer to my computer running Windows 98SE but I cannot get the drivers to load. When I browse the CD to locate the drivers the disc does not show any files.

Answer

You will need to type in the path of the drivers.

Click on Start>>Run>>Type in D:\English\USB (D: is normally the drive letter of your CD-ROM. You will need to know the drive letter of your CD-ROM to get the correct path).

Another fix for this issue is Right Click the Start button>>choose Explorer. Click on Tools>>>Folder Options. Click the View tab. Put a check in front of Show All Hidden Files.

Parts List

Your external kit comprises:

- 1 VP-9024 3.5 in. External Enclosure.
- 1 VP-9208 USB 2.0 to 36 pin IDE Smart Cable.
- 1 AC/DC Power Adapter with UK connection to EN60950.
- 1 Driver CD.
- 1 User Guide.



Printed on recycled paper.

Free Manuals Download Website

<http://myh66.com>

<http://usermanuals.us>

<http://www.somanuals.com>

<http://www.4manuals.cc>

<http://www.manual-lib.com>

<http://www.404manual.com>

<http://www.luxmanual.com>

<http://aubethermostatmanual.com>

Golf course search by state

<http://golfingnear.com>

Email search by domain

<http://emailbydomain.com>

Auto manuals search

<http://auto.somanuals.com>

TV manuals search

<http://tv.somanuals.com>