

Aluminum USB 2.0 , LAN 3.5 HDD NetWork Storage



VPA-3528Net

User's Manual

ViPower

We are your DataBridge™

<http://www.vipower.com>

PROPRIETARY NOTICE

We make no warranty of any kind with regards to this material, including, but not limited to, the implied warranties of merchantability and fitness for a particular purpose. We shall not be liable for errors contained herein or for incidental or consequential damages in connection with the furnishing, performance, or use of this material.

This document contains proprietary information which is protected by copyright. All rights are reserved. No part of this document may be photocopied, reproduced, or translated to another language without our written consent. The information contained in this document is subject to change without notice.

TRADEMARKS

MS-DOS, Windows 98/98SE/NT/2000/Me/XP are trademarks of Microsoft Corporation.

PC is a trademark of International Business Machines Corporation.

Macintosh and Mac are trademarks of Apple Computer, Inc.

All of the third-party brands and names are the property of their respective owners.

User`s Manual : VPA-3528Net - 3.5 HDD Aluminum Network Storage

Rev. 1.0 Date: June 10, 2005

© Copyright 2005 ViPowER, Inc. All rights reserved.

CONTENS

Specifications.....	04
Features.....	05
Package Checklist.....	06
Hardware Installation.....	07
Configuring LANDISK.....	17
Configure LANDISK through Web Browser	17
GUI Setup	18
SMB(SAMBA) Server Segment	28
FTP Server Segment	30
Disk Utility Segment	32
Map your LANDISK	34

Specifications

- Easy configuration and firmware upgrade under web-based GUI.
- Support Hardware Reset function by pressing the Power ON/OFF key for five seconds.
- Support up to 5 FTP users at the same time.
- Support USB 2.0 transfer rates up to 480 Mbit/Sec.
- Fully compatible with 3.5-inch IDE hard disk.
- USB 2.0/IDE compliant:
 - ◆ Integrated USB transceiver.
 - ◆ High-speed (480 Mbps) and full speed (12 Mbps) support.
 - ◆ USB suspend/resume, remote wake up support.
- Supports ATA PIO modes 0-4: ATA interface operation mode is automatically selected during device initialization or manually programmed with configuration data .
- Supports Ultra DMA modes 0-4.
- Supports 48-bit LBA (large HDD), when the VPA-3528Net NetWork Storage assembled with one 3.5-inch HDD.
- Supports 16-bit Multiword DMA mode and Ultra DMA mode interface.
- Supports Power Down mode and USB suspend indicator.

Features

- Drive enclosure made of aluminum alloy to aide in heat dissipation.
- Support USB 2.0 transfer rates up to 480 Mbit/Sec.
- Support 3.5-inch IDE hard disk.
- Compatible with Windows 98SE/ME/2000/XP
- Support DHCP server.
- Under network environment, it supports one 10/100Mbps Ethernet port.
- Built-in Ethernet Switch Port, easy to access and share data on the NetDisk
- Compatible with DSL routers/modems
- Support CIFS/SMB for Microsoft Network remote users to retrieve files through My Neighborhood.
- Support FTP server.
- Support Samba server, by which the server hosts 64 clients on line.
- Password management provides secure access to HDD and web management.
- Native Plug-n-Play supports for Ethernet and USB 2.0 interfaces.

Systems Requirements

- Windows Me/2000/XP (no drivers required)
(software drivers for Windows 98SE included)
- Mac OS 9.0 or later (software drivers included)

Package Checklist

The VPA-3528Net - 3.5" HDD Aluminum NetWork Storage package contains the following items:

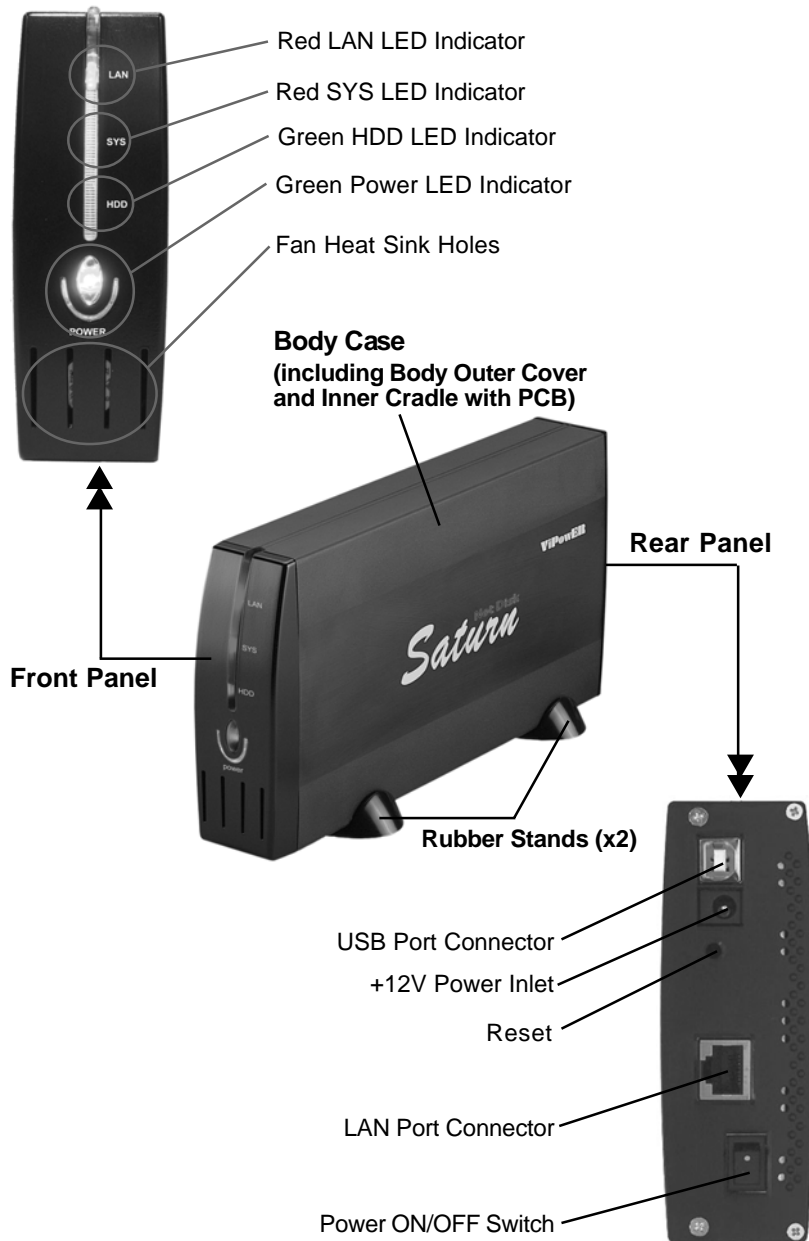


1. One VPA-3528Net Aluminum Case
2. Two Rubber Stands
3. One LAN Cable
4. One USB 2.0 cable
5. One+12V power adapter connected with one Power Adapter Power Cord
6. One USB Drivers and Utility Installation CD
7. One User`s Manual
8. Package of screws

If any of these items are missing or damaged, please contact your dealer or sales representative for assistance.

Hardware Installation

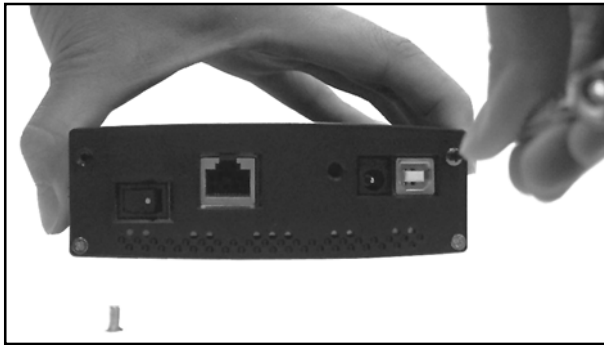
- ▶ Diagram for VPA-3528Net Aluminum USB 2.0+LAN 3.5-inch HDD NetWork Sotrage



▶ Installation

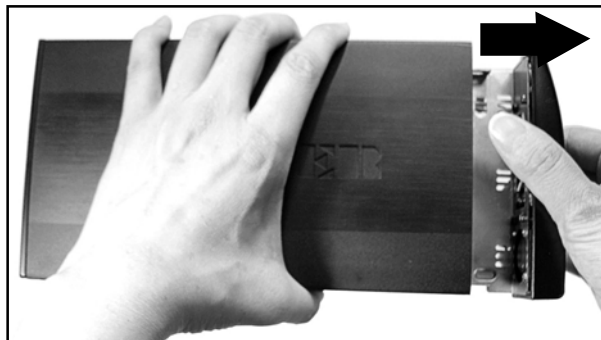
Proceed with the following steps to install the VPA-3528Net hardware.

Step 1.



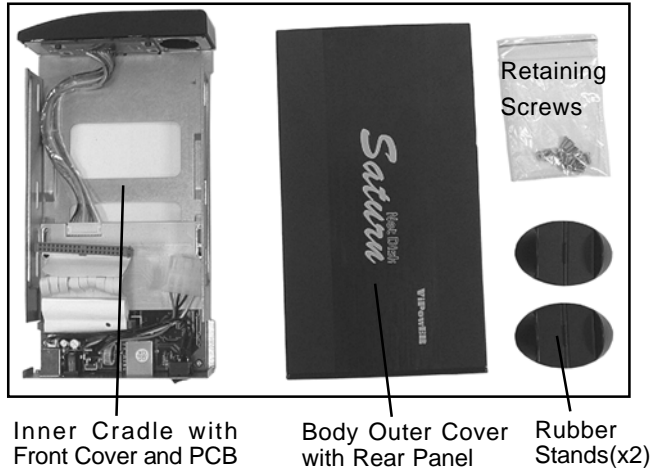
Remove two retaining screws on the rear panel securing the **Rear Panel** and **Body Case (Body Case including Body Outer Cover and Inner Cradle with PCB and Front Cover)**.

Step 2.



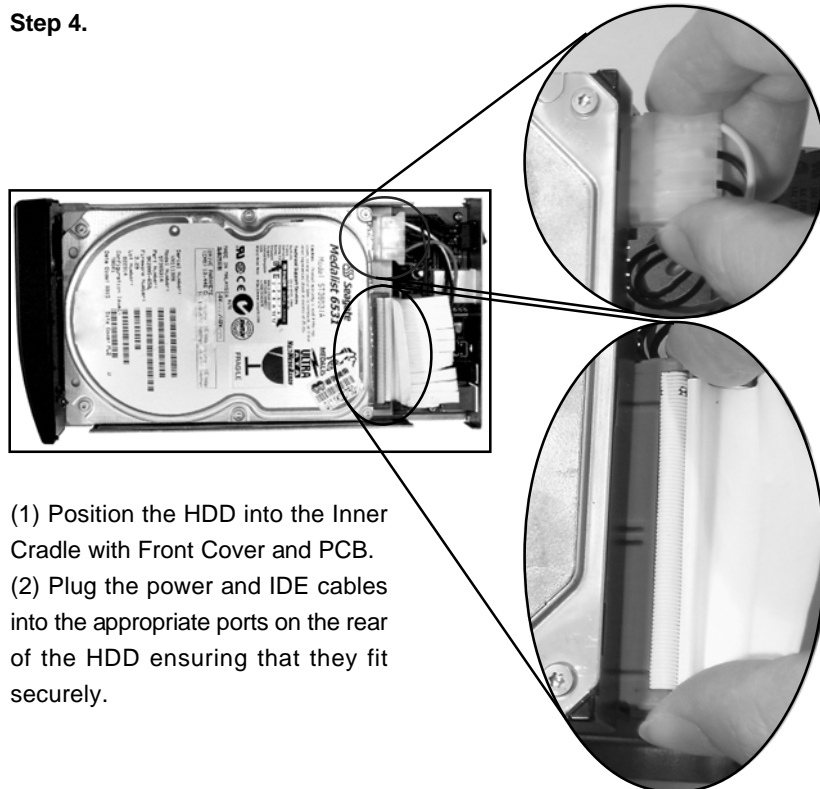
Carefully slide the **Inner Cradle with PCB and Front Cover** off the **Body Outer Cover with Rear Panel**.

Step 3.



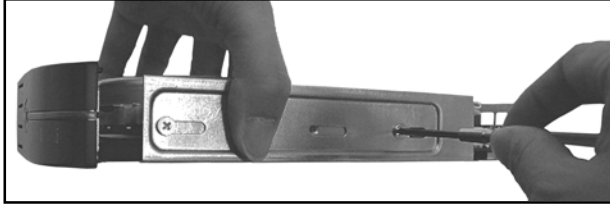
The illustration is the Components of the VPA-3528Net NetWork Storage.

Step 4.



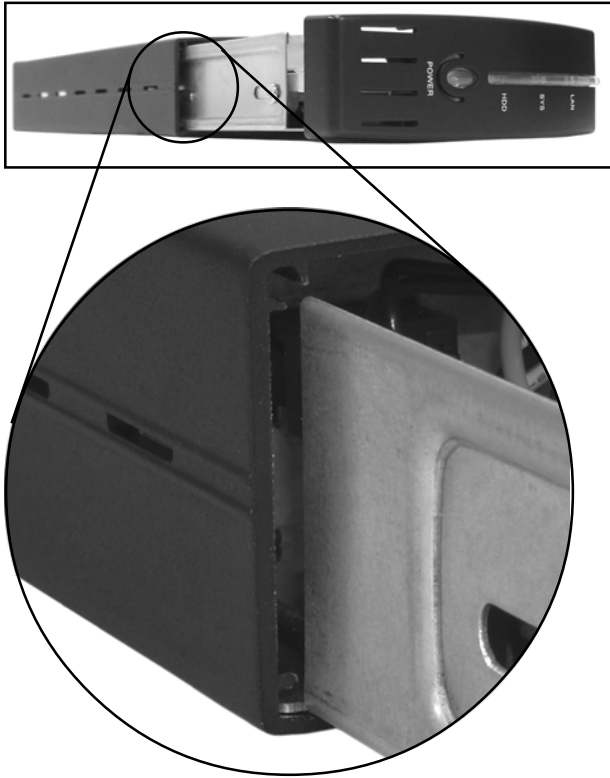
- (1) Position the HDD into the Inner Cradle with Front Cover and PCB.
- (2) Plug the power and IDE cables into the appropriate ports on the rear of the HDD ensuring that they fit securely.

Step 5.



Secure the HDD and the Inner Cradle with four retaining screws (two on each side).

Step 6.



(1) Position the back of the Inner Cradle Assembly into the head of the Body Outer Cover.

Note :

(a) "Inner Cradle with Front Cover, PCB and HDD"="Inner Cradle Assembly".

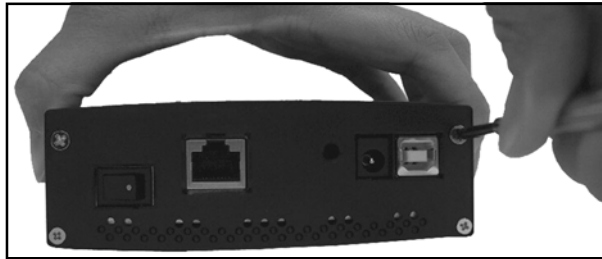
(b) In order to Stabilize and NOT Rock the Inner Cradle Assembly assembled in the Body Outer Cover with rear panel.

There are four front and rear bulges in the side of the Inner Cradle (two in each side), and two jogs in the inside of the Body Outer Cover (one in each inside).

(c) Put the bulges between the jogs and the bottom of the Body Outer Cover.

(2) Carefully slide the Inner Cradle Assembly back into the Body Outer Cover with rear panel.

Step 7.



Replace the two screws which were removed in Step 1 from the back of the VPA-3528Net NetWork Storage.

Step 8.



Place the Rubber Stands on the downside of the VPA-3528Net NetWork Storage, and position the Rubber Stand Location Positioner into the Rubber Stand Location Holes on the downside of the NetWork Storage.

Step 8.



Place the Rubber Stands on the downside of the VPA-3528Net NetWork Storage, and position the Rubber Stand Location Positioner into the Rubber Stand Location Holes on the downside of the NetWork Storage.

Step 9.

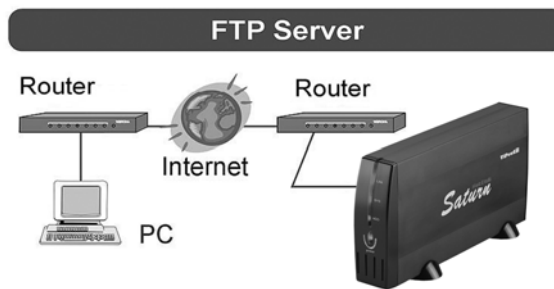


The hard drive installation is complete, and the VPA-3528Net NetWork Storage is ready to use.

VPA-3528Net NetWork Storage Application

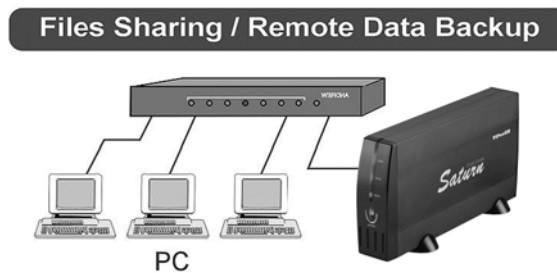
Personal Data Backup

For a single user, you can use VPA-3528Net NetWork Storage as an external Hard disk driver to access your data through the Ethernet.



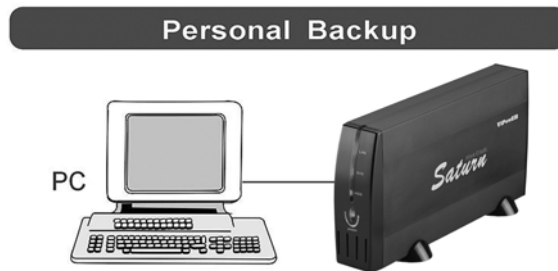
Network File share

VPA-3528Net NetWork Storage could also be connected to a 10/100 Base-T switch, Hub, or router to be shared among group users.



FTP Remote Backup

VPA-3528Net NetWork Storage packs the power of FTP function and this will give you the remote backup feature. If you plan to use the FTP, use the FTP supported by Browser. Type **ftp://domain name or IP/ (ex. landisk)** in Browser's Address and press Enter.



You will get into the authentication window and then you can key in the user name and password.

Connecting the VPA-3528Net to a Computer

Computer and Systems Requirements

- LAN and USB equipped desktop computer or notebook
- Windows 98SE/Me/2000/XP/NT 4.0, or Mac OS 9.0 or above

NOTE:

Do NOT connect Ethernet and USB cables at the same time.

Ethernet Network Storage Mode

Proceed with the following steps to use the VPA-3528Net Network Storage.

Step 1.

Power on two computer.

Step 2.

Plug one end of the power adapter power cord +12V power adapter into an AC power outlet, and the other end to the +12V power inlet on the rear panel of the VPA-3528-Net NetWork Storage.

Step 3.

Connect one end of the LAN cable into the LAN port connector on the rear panel of the VPA-3528Net NetWork Storage, then plug the other end into a LAN port connector on the back of one of the two computer.

Step 4.

Power ON the VPA-3528Net NetWork Storage. The Power LED indicator on the front panel of the VPA-3528Net will light after a slight delay.

Step 5.

Use the other one computer to setup the VPA-3528Net NetWork Storage.

USB Storage Mode

Proceed with the following steps to use the VPA-3528Net NetWork Storage.

Step 1.

Power on the computer.

Step 2.

Plug one end of the power adapter power cord +12V power adapter into an AC power outlet, and the other end to the +12V power inlet on the rear panel of the VPA-3528Net NetWork Storage.

Step 3.

Connect one end of the USB cable into the USB port connector on the rear panel of the VPA-3528Net NetWork Storage, then plug the other end into one USB port on the back of the computer.

Step 4.

Power ON the VPA-3528Net NetWork Storage. The Power LED indicator on the front panel of the VPA-3528Net will light after a slight delay. The VPA-3528Net NetWork Storage is ready to use.

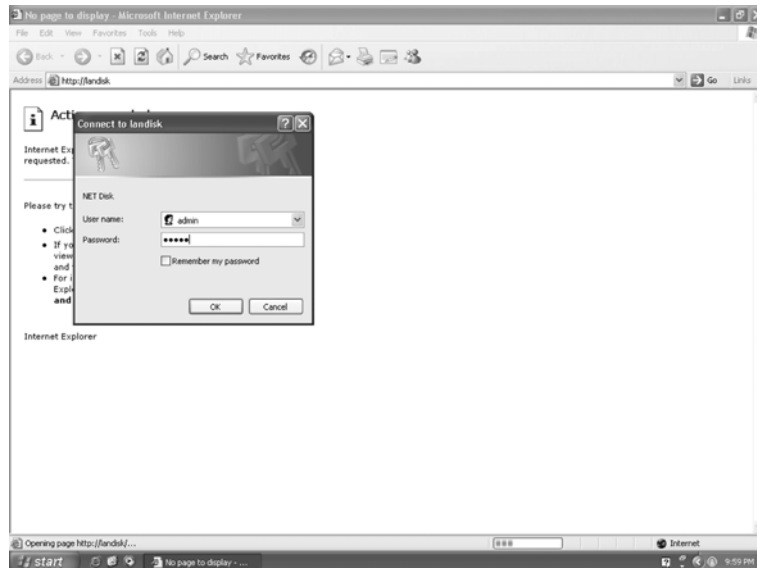
Note:

The device will auto-detect the speed of your USB port and adjust between USB 1.0 and USB 2.0 speed once the driver is installed.

Setup the VPA-3528Net Network Storage

Configure your VPA-3528Net Network Storage through Web Browser

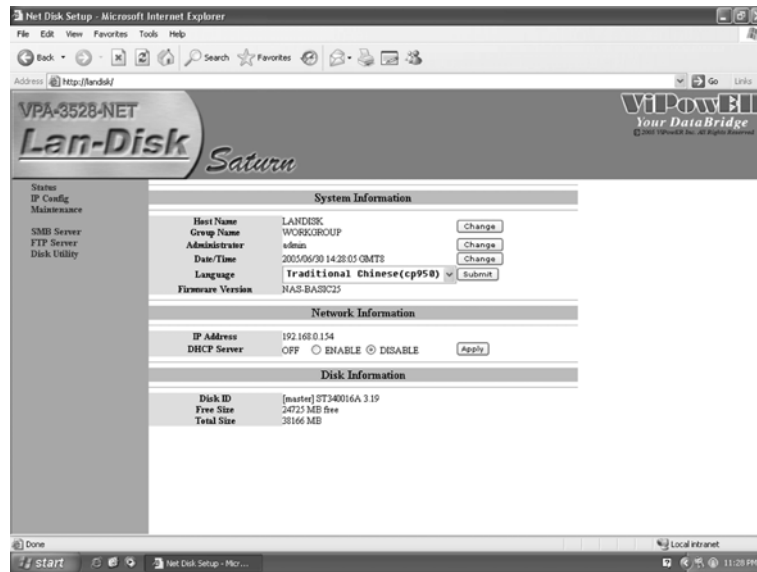
- ① Enter in URL, then Key in **landisk** in IE and press **Enter**. The window **Connect to VPA-3528Net** will appear.
- ② Key **admin** in the User Name Column.
- ③ Key **admin** in the Password Column.
- ④ Click **OK** button.



⑤ The GUI setup window will show up as below.

5-1-1. Status Segment

Click on **Status** shown on the LEFT side of the **GUI setup window** to enter into the window below. The window will allow the user to view the status of the HDD installed in the VPA-3528Net NetWork storage.

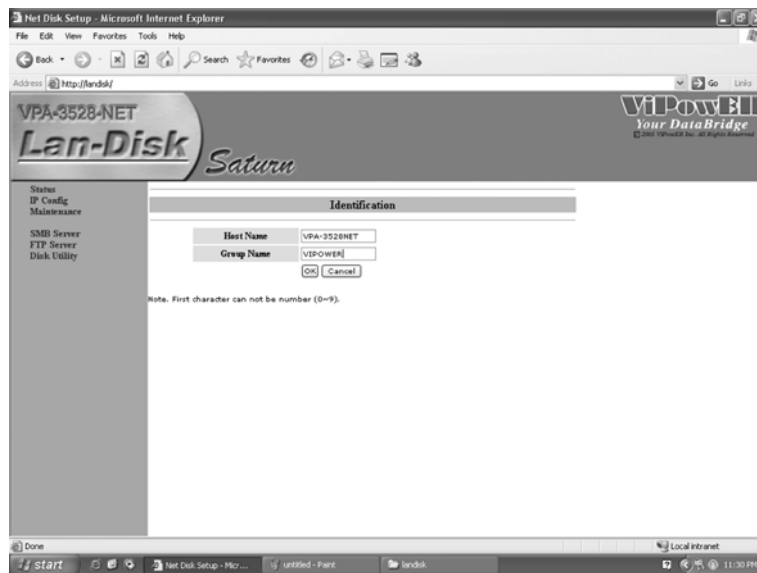


5-1-2. Identification Segment

Press the **Change** button following the **Host Name and Group Name** Segment on the **System Information** Segment to enter into the **Identification** window.

NOTE:

*Host Name: Please key in "VPA-3528Net".
Group Name: Please key in "VIPOWER".
Enter a new name into Group Name column
and click **OK** button to change to a new group.*



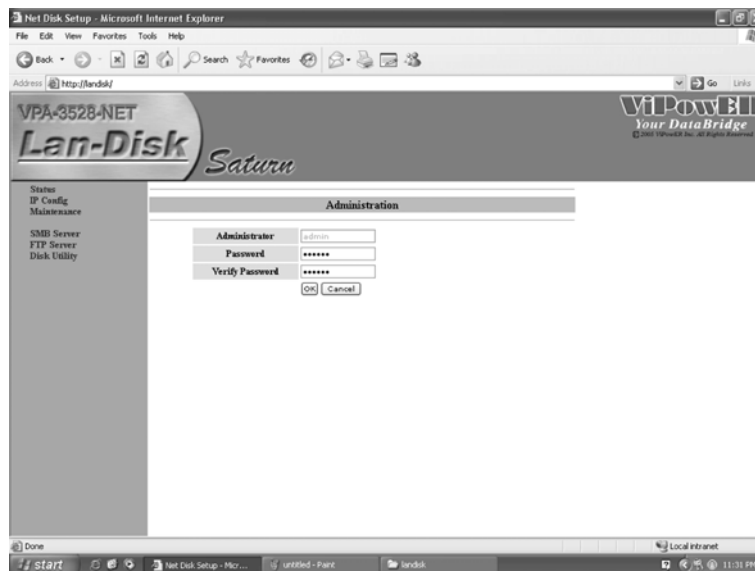
5-1-3. Administration segment

Press the **Change** button following **Administrator** to enter into **Administration** window.

Administrator: Please key in "admin" (default)
Password: Please key in "admin" (default)

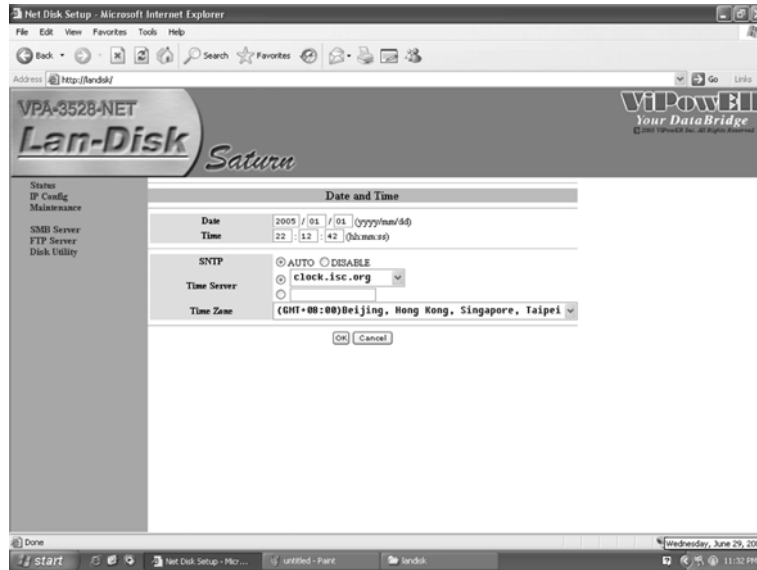
Note:

This Administration window allows you to change your Password setting. If you have made any changes, you will need to enter new Password to enter into the GUI setup window next time.



5-1-4. Date/Time Segment

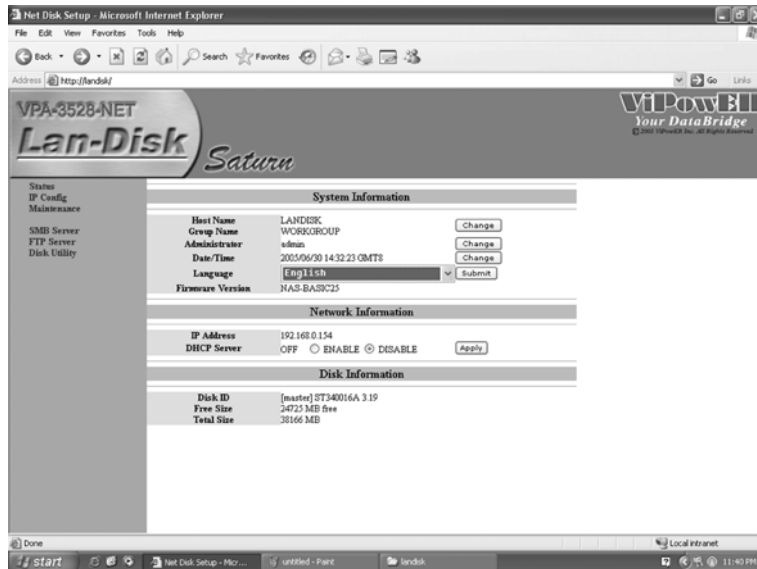
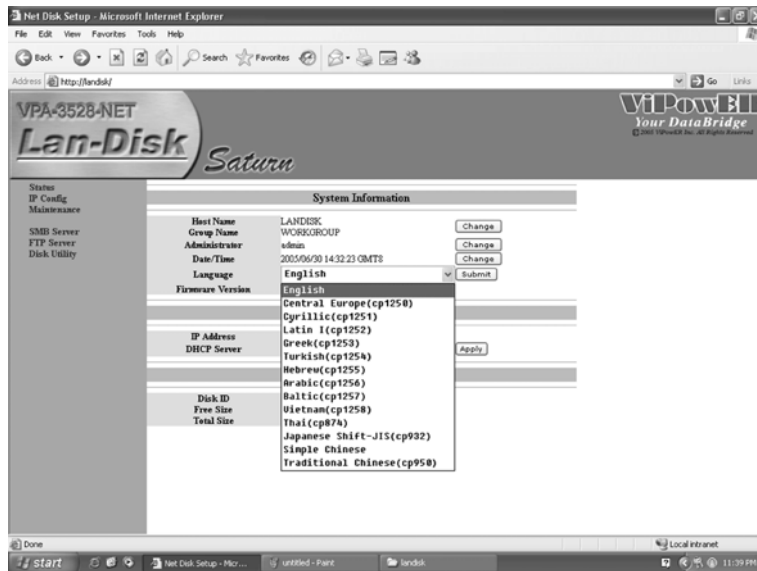
Press the **Change** button following **Date/Time** Segment to enter into **Date/Time** window.



You can set up the Date/Time/SNTP/Time Server/Time Zone information in this window. After finish setting up, click **OK** button.

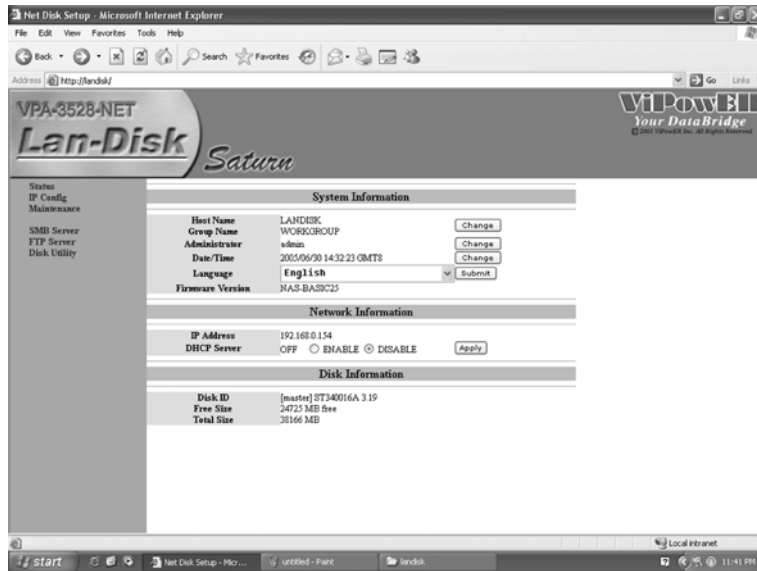
5-1-5. Languages Segment

Support English/Japanese/Tradition Chinese/Simple Chinese



5-1-6. Firmware version Segment

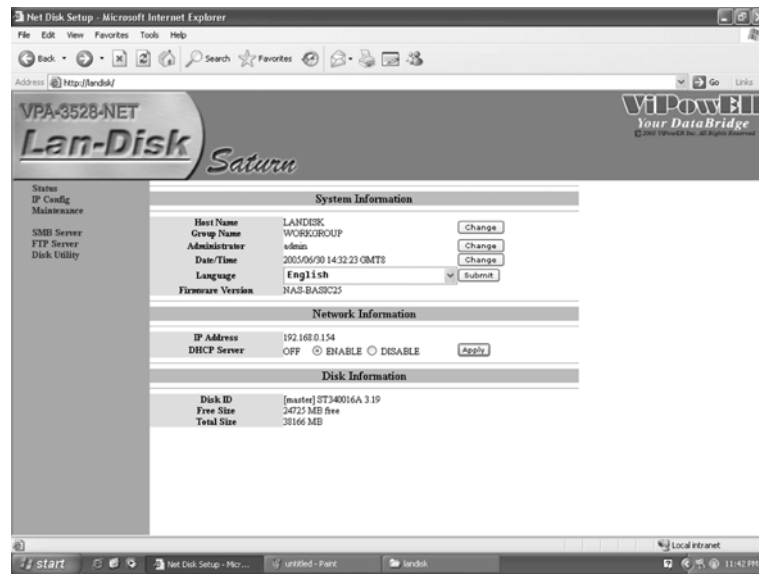
NAS-BASIC16 : Show the built-in version from factory.



5-1-7. Network Information Segment

IP Address : Show the connecting Ethernet IP address of the VPA-3528Net NetWork Storage.

DHCP Server : You can choice **ENABLE/DISABLE** item then press **Apply** button to setup/un-setup the VPA-3528Net NetWork Storage as DHCP server.

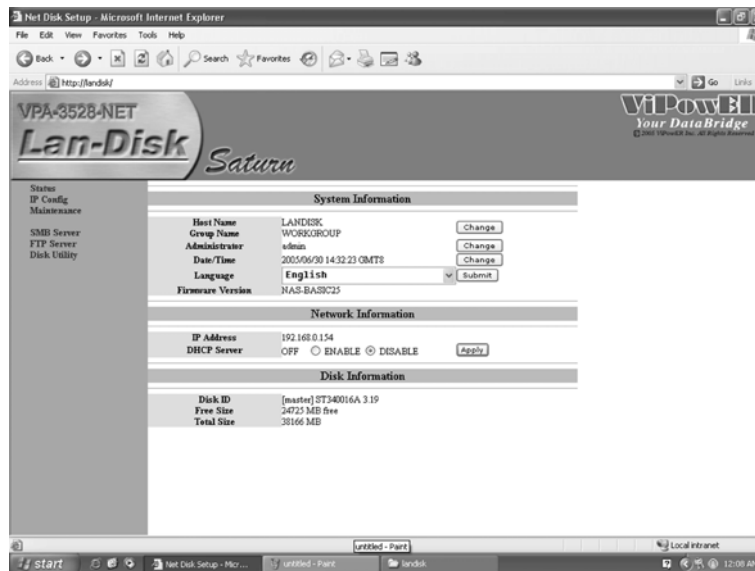


5-1-8. Disk Information Segment

Disk ID : Show the factory model name of the HDD installed in the VPA-3528Net NetWork Storage.

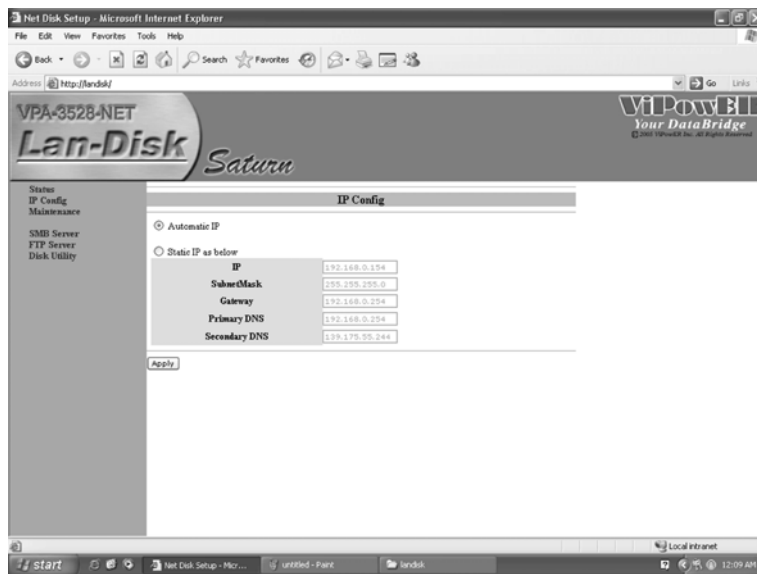
Free Size : Show the still available capacity of the HDD installed in the VPA-3528Net NetWork Storage.

Total Size : Show the total capacity of the HDD installed in the VPA-3528Net NetWork Storage.



5-2. IP Config Segment

Click on **IP Config** shown on the LEFT side of the **GUI setup window** to enter into **IP Config** window. On this window, you can change the IP setting by ticking on **Static IP as below** item, entering your IP information in each column, then pressing on **Apply** button to complete setting up your static IP.



5-3. Maintenance Segment

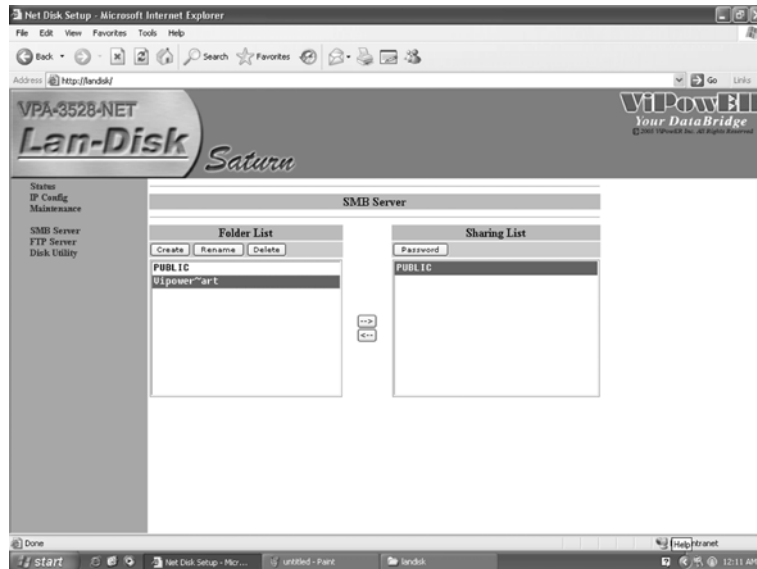
Click on **Maintenance** shown on the LEFT side of the **GUI setup window** to enter into the window below.



Read the instructions on the window to upload the Firmware Upload, System Reboot or go back to the Factory Defaults settings.

5-4. SMB Server Segment

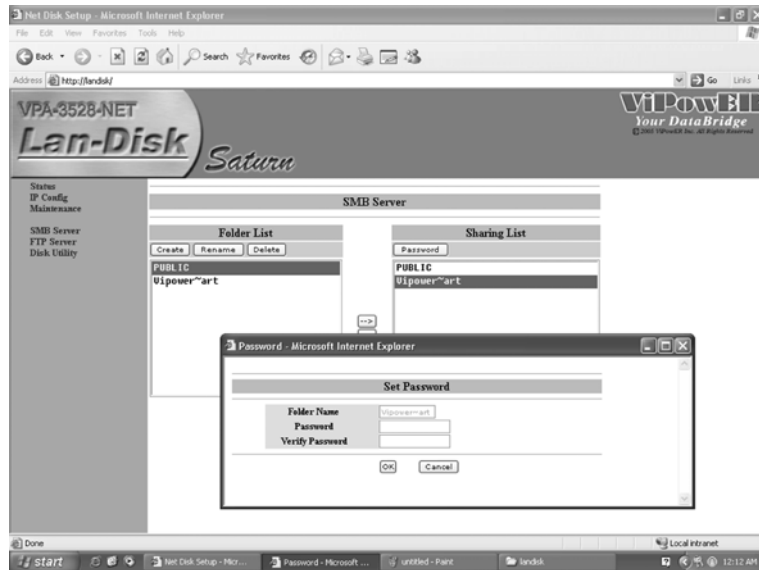
Click on **SMB Server** shown on the LEFT side of the **GUI setup window** to enter into the window below.



You can manage your share folders and their passwords in this window.

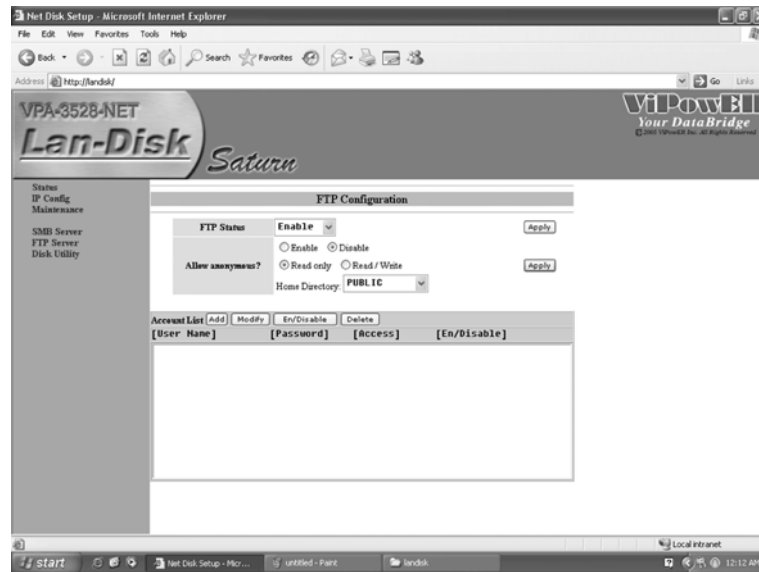
1. If your VPA-3528Net NetWork Storage has previously been formatted using Disk Utility feature in status segment, the default folder [PUBLIC] will show in this window. If your VPA-3528Net NetWork storage has not been formatted, you can still create new folders now.
2. By clicking on **Create**, **Rename**, **Delete** on **Folder List** and clicking on **Password** on **Sharing List**, you can manage the share folders.

- By ticking on the folder Name and the **Password** button on **Sharing List**, you can set the Password of the folder on the **Password- Microsoft Internet Explorer** window. Then the folder being set with password will show * mark on the window.

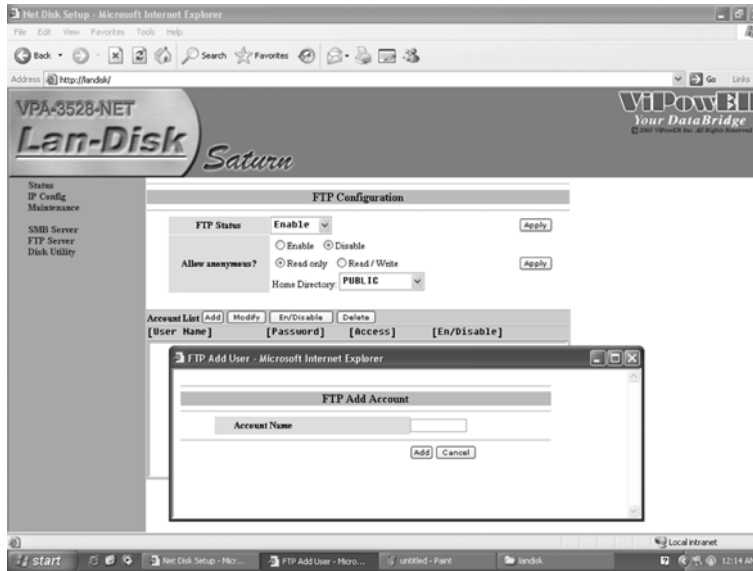


5-5. FTP Server Segment

Click on **FTP Server** shown on the LEFT side of the **GUI setup window** to enter into the **FTP Configuration** window below.



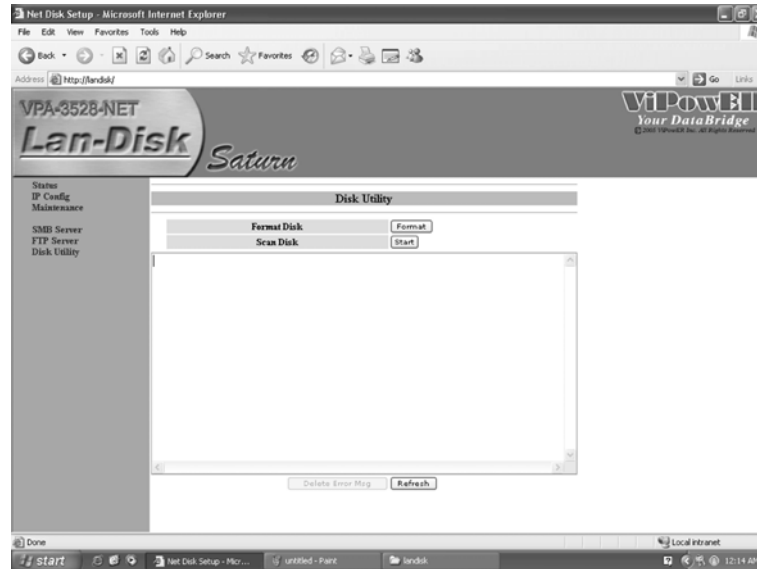
Press on **Add** button show on **Account List** to add FTP user's account.



You can setup each “FTP Status” and “Allow anonymous? (User Name, Password, Access and En/Disable)” in the window. After completing the settings, press **ADD** button to add a new account. Each FTP user's account status will show on FTP Configuration window after setup.

5-6. Disk Utility Segment

Click on [Disk Utility] shown on the LEFT side of the GUI setup window to enter into the window below.



If your HDD is an unformatted new drive, you need to format the drive via this utility. Please note that VPA-3528Net NetWork Storage only support FAT32 Format.

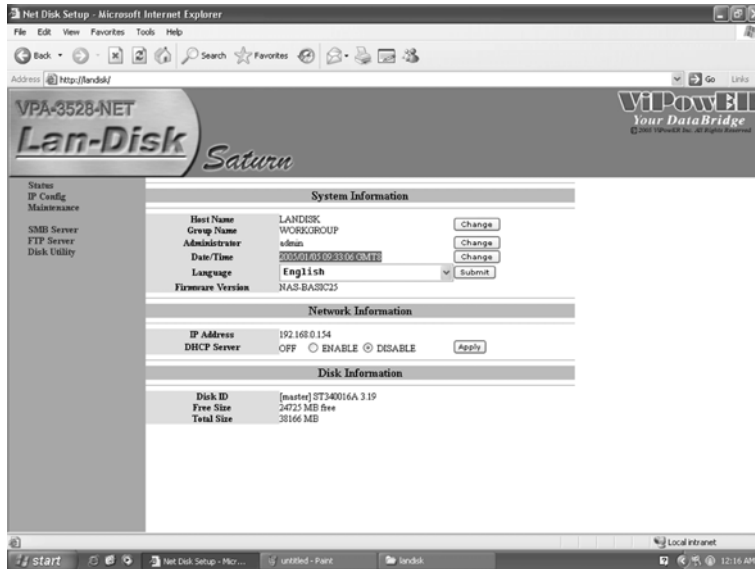
1. Press **Format** button to start formatting your HDD.

Warning:

- All your data and partitions will be deleted if the format button is pressed.
- If the file size of the new HDD is zero and the drive could not be found, you have to utilize the Disk Utility to format the HDD as FAT32 format.

2. After the HDD is formatted, please **reboot** your VPA-3528Net NetWork Storage and click **Refresh** button to refresh the IE.
3. Running the Scan Disk program will check the file system. And correct any errors found. This Program should be run regularly. Press the **Start** button, and the results will show on the column. If you want to delete the error messages, please click on the messages and press **Delete Error Msg** button.

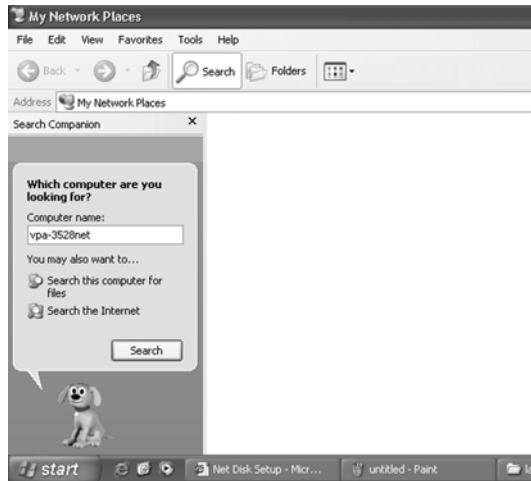
ReSet the VPA-3528Net Network Storage



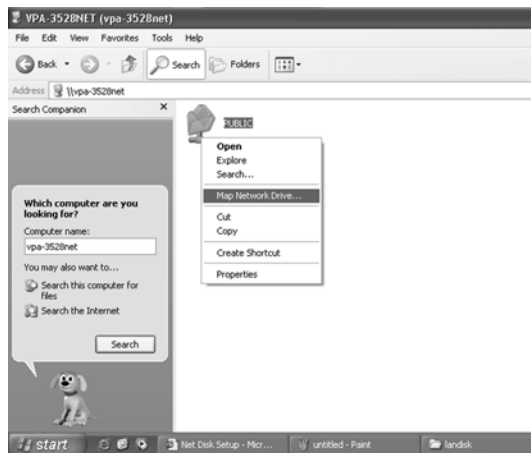
Map your VPA-3528Net NetWork Storage

By mapping your VPA-3528Net NetWork Storage, you can access it easily in the Computer.

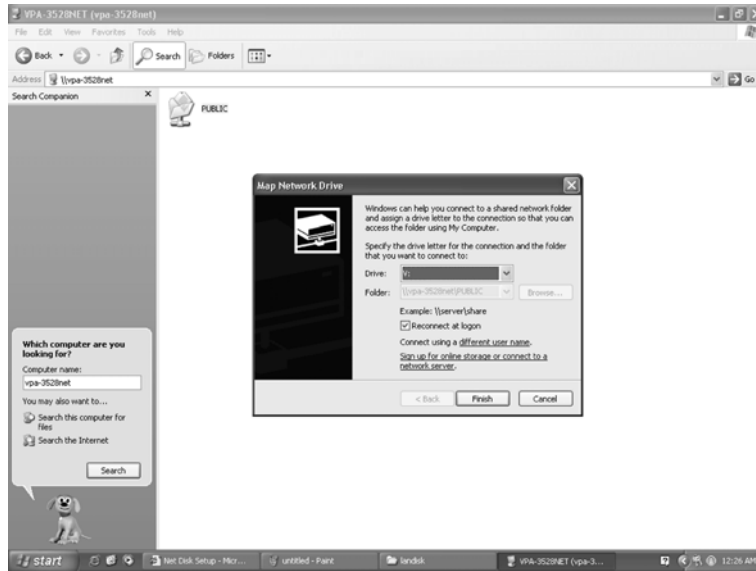
Use the right mouse button to click the **Start** icon located in the lower left corner of the Windows taskbar. Click on **Search**. Select and click on **Computer or people**, and then select and click on **a computer on the network** in the **Search** window. Type "VPA-3528Net" in the **Computer Name** column, then press **Search** button. You will see the window.



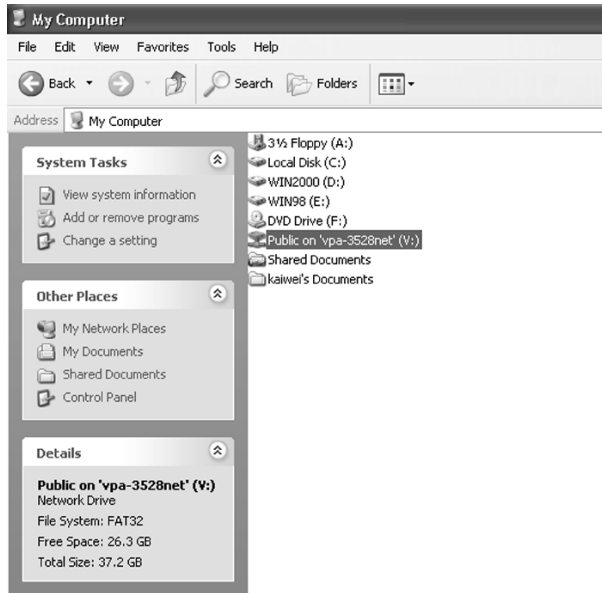
Point to the "VPA-3528Net", then double click the LEFT mouse button. And choose the folder you want to map, then use the RIGHT mouse button to click the Map Network Drive icon located in the dialogue box.



The following window will appear.



Choose a Drive letter you want to map. Press **Finish** button to complete mapping. As the following window illustrates, you can now access VPA-3528Net NetWork Storage easily in the Computer.



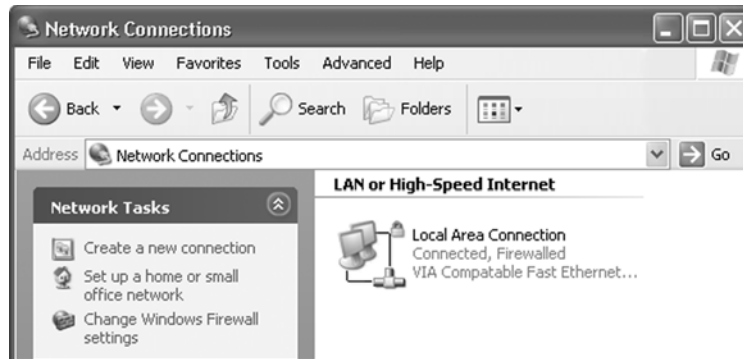
Trouble Shooting

1. While your VPA-3528Net NetWork Storage has been properly connected to the PC, *but the GUI setup window does not appear properly* after you type **VPA-3528Net** on the Browser and enter the Password, you need to configure your IP.
 - 1). Enter into DOS command prompt. Press **Ipconfig/renew** to verify your IP address if you use windows 98 or above.
 - 2). Or release your original IP via "winipcfg" command when using windows 98.

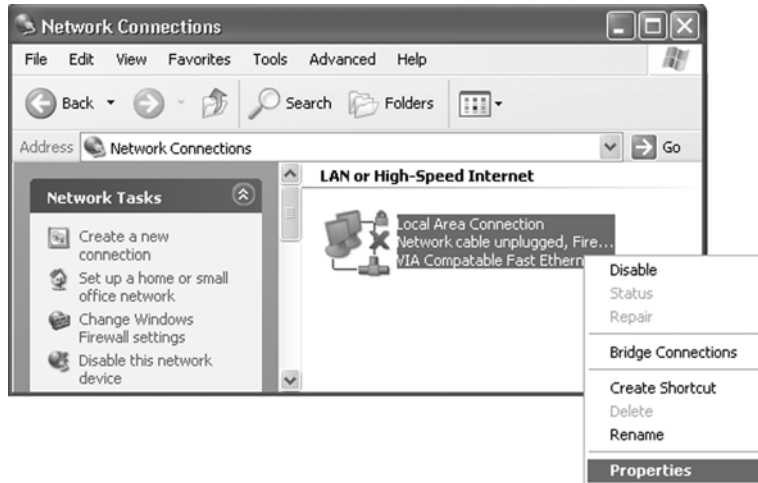
Go back to the Browser, type **VPA-3528Net** to enter into the GUI Setup window.

2. *How to configure the TCP/IP network protocol?*

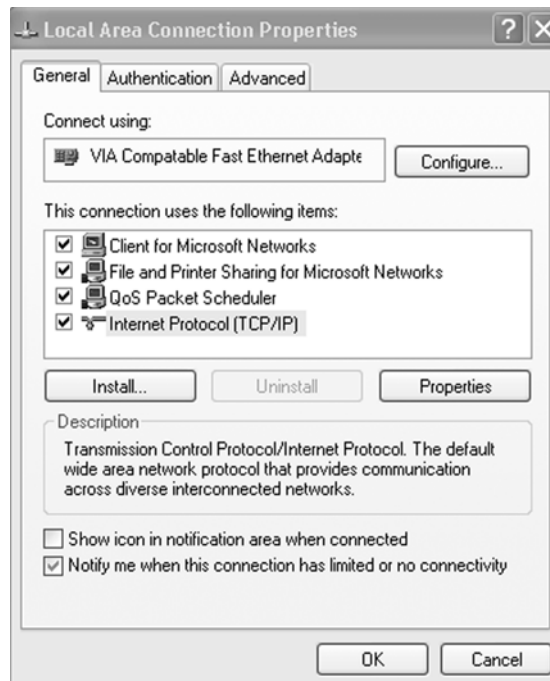
Use the right mouse button to click the **Start** icon located in the lower left corner of the Windows taskbar. Click on **Settings, then Control Panel**. Select and double click on **Network Connections** in the Control Panel window, and the **Network Connections** window will appear.



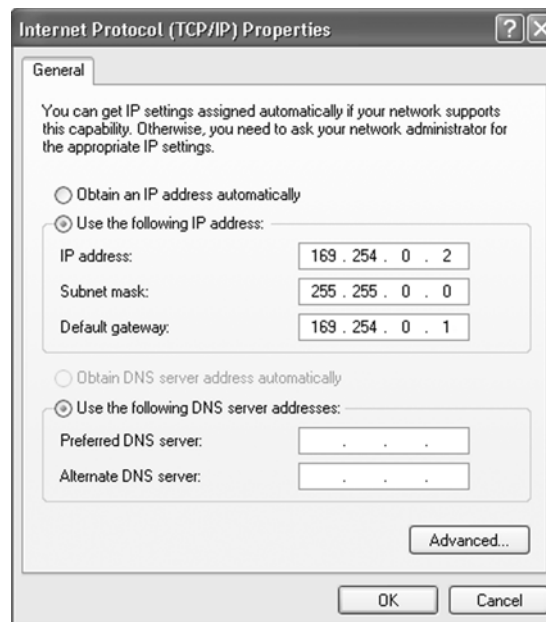
Point and use the right mouse button to click on **Local Area Connection**, and the sub-window will appear.



Select and click on **Properties** on the sub-window. The **Local Area Connection Properties** window appears.



Choose **Internet Protocol (TCP/IP)** in the **This connection uses the following items** column, then press **Properties** button. The **Internet Protocol (TCP/IP) Properties** window will appear. Select and tick **Use the following IP address**, then key in the **IP address**. The **Subnet mask** will then appear automatically in the window. When finishing, press **OK** button



3. How to configure your IP while your system is under Static IP?

- ❶. Obtain IP, SubNet Mask, gateway, DNS data from your operating system.
- ❷. Reconfigure your PC as auto IP by obtaining an IP address automatically.
- ❸. Connect your PC and VPA-3528Net NetWork Storage.
- ❹. Setup your VPA-3528Net NetWork Storage as Static IP via setup GUI window.
- ❺. Change your PC's IP back to previous setting.
- ❻. Connect your system back to LAN.

4. I can't use the web browser to setup my VPA-3528Net.

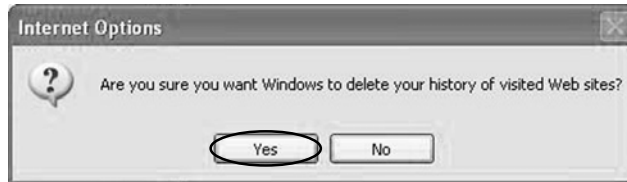
Setp.1 Click "Tools" and select <Internet Option>



Setp.2 Click on the "Clear History" button.



Step 3 Click on the "Yes" button.



Step 4 Select <Content> and click on the "AutoComplete" button.



Setp.5 Click on the "Clear Passwords" button.



Setp.6 Click on the "OK" button to clear passwords



Free Manuals Download Website

<http://myh66.com>

<http://usermanuals.us>

<http://www.somanuals.com>

<http://www.4manuals.cc>

<http://www.manual-lib.com>

<http://www.404manual.com>

<http://www.luxmanual.com>

<http://aubethermostatmanual.com>

Golf course search by state

<http://golfingnear.com>

Email search by domain

<http://emailbydomain.com>

Auto manuals search

<http://auto.somanuals.com>

TV manuals search

<http://tv.somanuals.com>