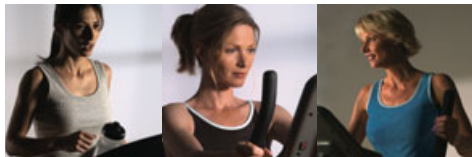


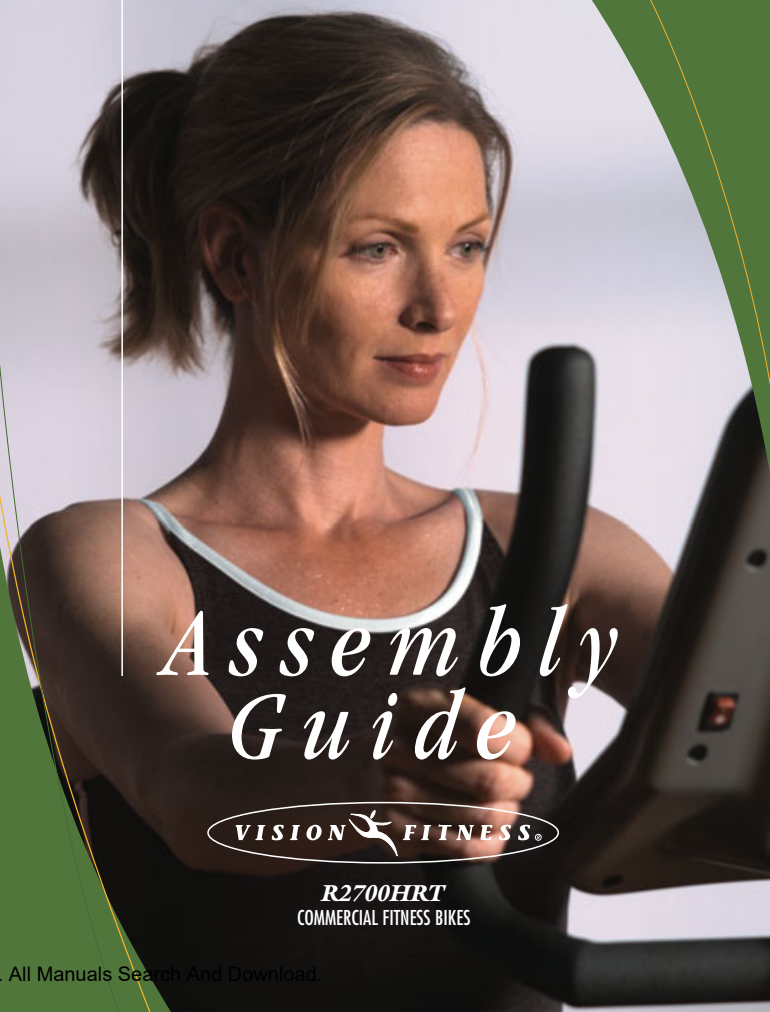
*it all
starts
with a
vision*



VISION  FITNESS®

500 South CP Avenue • P.O. Box 280 • Lake Mills, WI 53551
toll free 800.335.4340 • phone 920.648.4090 • fax 920.648.3373
www.visionfitness.com

©2006 Vision Fitness. All Rights Reserved. 11.06
AG18.48PRD
REV1

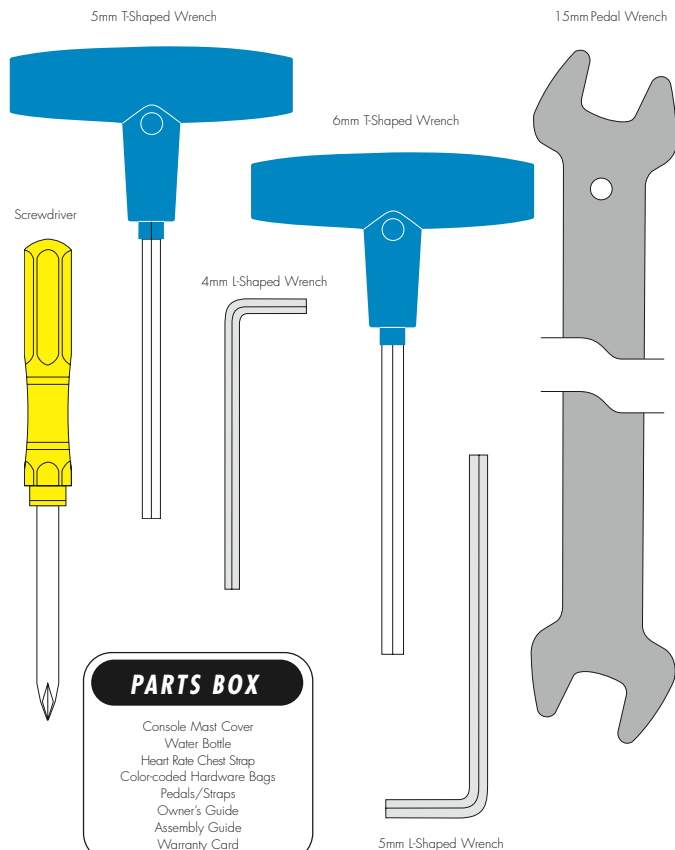


*Assembly
Guide*

VISION  FITNESS®

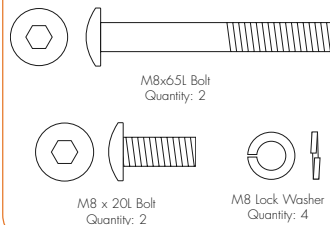
R2700HRT
COMMERCIAL FITNESS BIKES

TOOLS & PARTS INCLUDED

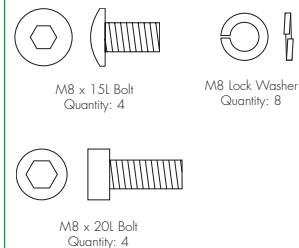


HARDWARE INCLUDED

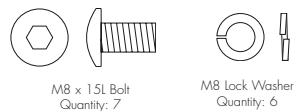
ORANGE BAG



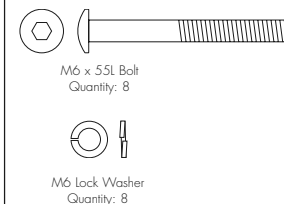
GREEN BAG



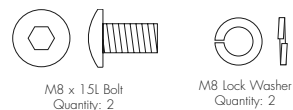
BLUE BAG



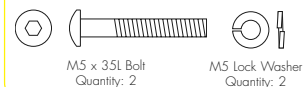
BLACK BAG



PINK BAG



YELLOW BAG



Assembly Guide

R2700HRT COMMERCIAL FITNESS BIKE

To avoid possible damage to this Fitness Bike, please follow these assembly steps in the correct order. Before proceeding, find your new Fitness Bike's serial number located on the front axle tube, and enter here:

Refer to this number when calling for service, and enter this serial number on your Warranty Card and in your own records. Be sure to read your Owner's Guide before using your new Fitness Bike. If any parts, hardware or tools are missing, please call 1.800.335.4348, Extension 12

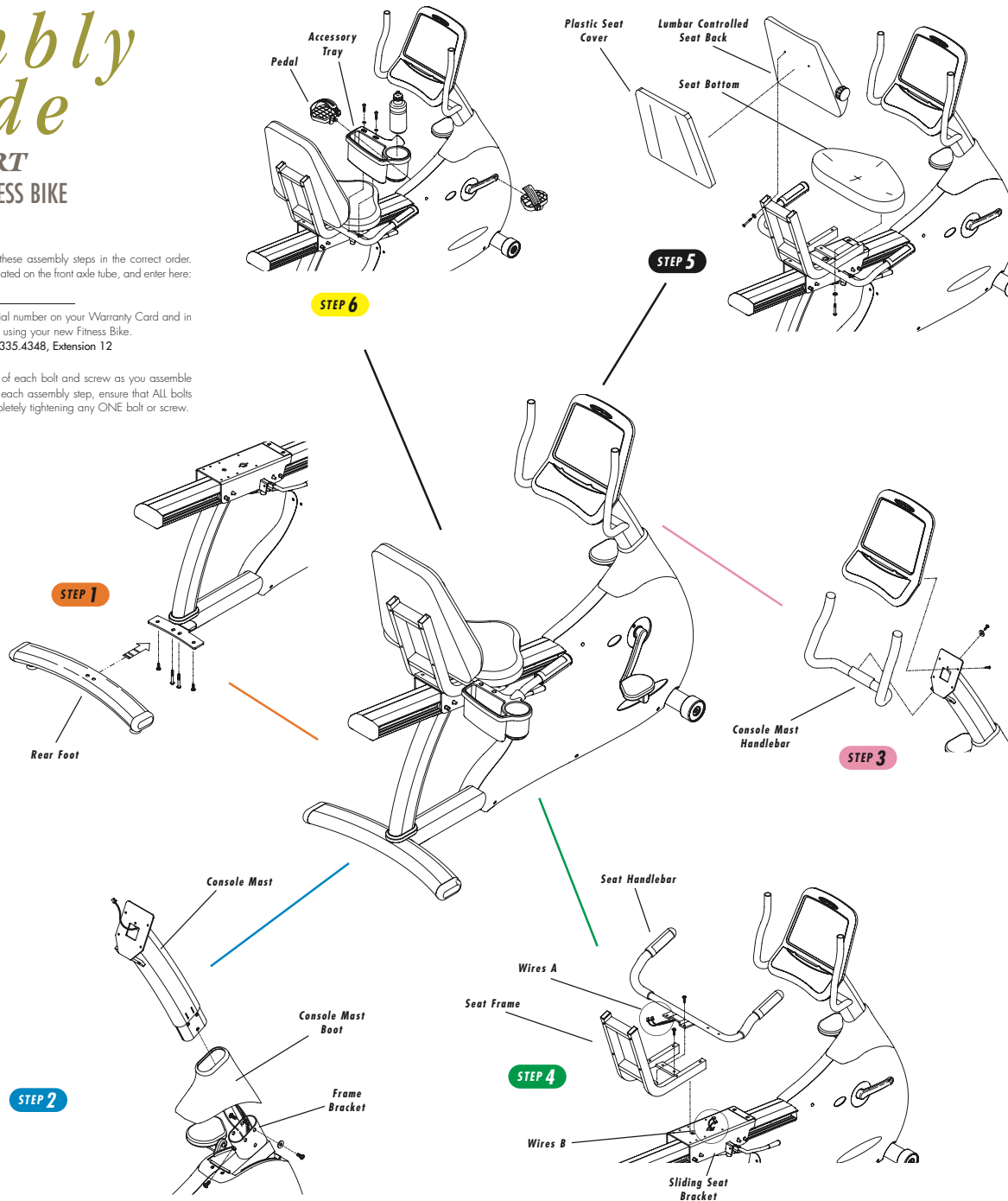
NOTE: It is recommended that you apply grease to the threads of each bolt and screw as you assemble your Fitness Bike to prevent loosening and noise. Also, during each assembly step, ensure that ALL bolts and screws are in place and partially threaded in before completely tightening any ONE bolt or screw.

STEP 1 ORANGE BAG

- Install the rear foot with the four lock washers (M8), two inside bolts (M8x65L), and two outside bolts (M8x20L). Tighten with the 5mm T-shaped wrench.

STEP 2 BLUE BAG

- Slide the console mast boot onto the console mast.
- Unfold the wire harness and heart rate wires located in the console mast frame bracket. Attach the wire tie coming from the bottom of the console mast to the wire harness and heart rate wires. Pull the wire tie with wire harness and heart rate wires up through the top of the console mast while simultaneously sliding the mast into the frame bracket.
- Secure the console mast to the frame bracket with six lock washers (M8) and six bolts (M8x15L). Tighten with the 5mm T-shaped wrench. Place the seventh bolt (M8x15L) in the rear of the frame bracket and tighten until snug.
- Slide the console mast boot down and snap it into place on the side cover.



STEP 3 PINK BAG

- Mount the upper handlebars to the console mast using two lock washers (M8) and two bolts (M8x15L). Tighten with the 5mm T-shaped wrench.
- Remove the four mounting bolts from the back of the console. Connect the wire harness and heart rate wires that run through the console mast into the plugs located in the back of the console. Attach the console to the mast with the four bolts removed earlier.
- Remove the battery cover on the backside of the console. Plug in the 9volt battery. Reattach the battery cover.

STEP 4 GREEN BAG

- Attach the seat frame to the sliding seat bracket using four lock washers (M8) and four socket head bolts (M8x20L) and the 6mm T-shaped wrench.
- Connect Wires A on the seat handlebar to Wires B on the sliding seat bracket. Attach the seat handlebars to the sliding seat bracket using four lock washers (M8) and four bolts (M8x15L). Tighten with the 5mm T-shaped wrench.

STEP 5 BLACK BAG

- Secure the lumbar controlled seat back and the seat bottom to the seat frame with eight lock washers (M6) and eight bolts (M6x55L). Tighten with the 4mm T-shaped wrench.
- Snap the plastic seat cover into place on the back of the lumbar controlled seat.

STEP 6 YELLOW BAG

- Attach the left and right pedals to the left and right crank arms. Tighten the pedals using the 15mm pedal wrench.
- Secure the accessory tray to the seat handlebar with two bolts (M5x35L) and two lock washers (M5). Tighten with the screwdriver.

Free Manuals Download Website

<http://myh66.com>

<http://usermanuals.us>

<http://www.somanuals.com>

<http://www.4manuals.cc>

<http://www.manual-lib.com>

<http://www.404manual.com>

<http://www.luxmanual.com>

<http://aubethermostatmanual.com>

Golf course search by state

<http://golfingnear.com>

Email search by domain

<http://emailbydomain.com>

Auto manuals search

<http://auto.somanuals.com>

TV manuals search

<http://tv.somanuals.com>